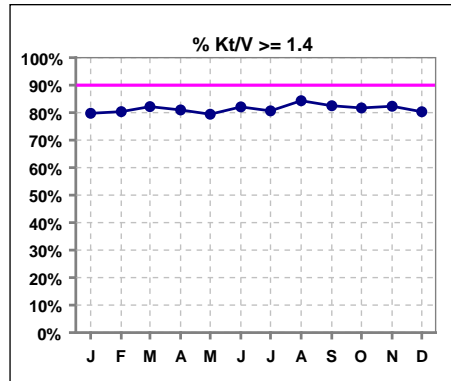


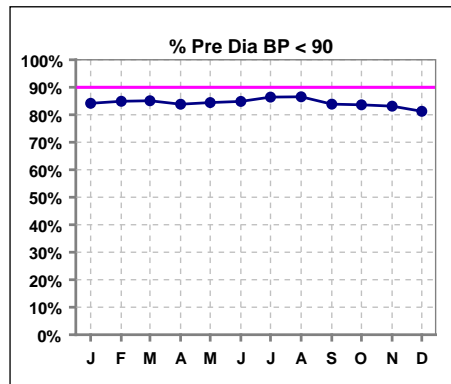
**I. ADEQUACY OF DIALYSIS**

	Jan	Feb	Mar	Apr	May	Jun	Jul	Aug	Sep	Oct	Nov	Dec
# Kt/V	1018	998	1016	999	1001	988	1007	1015	1012	1006	1013	991
# Kt/V >= 1.4	812	802	835	809	795	811	812	856	835	822	834	796
Pop. Mean	1.62	1.64	1.62	1.62	1.62	1.64	1.62	1.64	1.64	1.65	1.65	1.62
Std. Deviation	0.34	0.42	0.30	0.34	0.38	0.31	0.31	0.33	0.33	0.35	0.37	0.34
Network Mean '04	1.59	1.59	1.59	1.59	1.59	1.59	1.59	1.59	1.59	1.59	1.59	1.59
Natl. Mean '06								1.55	1.55	1.55	1.55	1.55
<b>% Kt/V &gt;= 1.4</b>	<b>80%</b>	<b>80%</b>	<b>82%</b>	<b>81%</b>	<b>79%</b>	<b>82%</b>	<b>81%</b>	<b>84%</b>	<b>83%</b>	<b>82%</b>	<b>82%</b>	<b>80%</b>
<b>% Kt/V &gt;= 1.2</b>	<b>93%</b>	<b>93%</b>	<b>94%</b>	<b>93%</b>	<b>91%</b>	<b>94%</b>	<b>93%</b>	<b>94%</b>	<b>94%</b>	<b>93%</b>	<b>92%</b>	<b>93%</b>
<b>Network % &gt;= 1.2 '06</b>	<b>92%</b>	<b>92%</b>	<b>92%</b>	<b>92%</b>	<b>92%</b>	<b>92%</b>	<b>92%</b>	<b>89%</b>	<b>89%</b>	<b>89%</b>	<b>89%</b>	<b>89%</b>
<b>Natl. % &gt;= 1.2 '06</b>	<b>89%</b>	<b>89%</b>	<b>89%</b>	<b>89%</b>	<b>89%</b>	<b>89%</b>	<b>89%</b>	<b>90%</b>	<b>90%</b>	<b>90%</b>	<b>90%</b>	<b>90%</b>

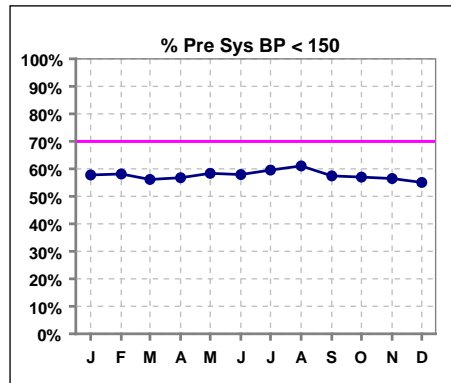


**Blood Pressure Control (Pre)**

	Jan	Feb	Mar	Apr	May	Jun	Jul	Aug	Sep	Oct	Nov	Dec
# Pre Dia BP	1042	1020	1033	1027	1028	1010	1031	1040	1041	1044	1043	1019
# Pre Dia BP < 90	877	866	879	861	868	857	891	900	873	873	867	828
Pop. Mean	76	76	76	76	76	76	76	75	76	76	76	76
Std. Deviation	14.0	14.3	14.2	14.0	13.6	13.7	13.4	13.7	13.9	13.9	13.9	13.9
Network Mean												
Natl. Mean												
<b>% Pre Dia BP &lt; 90</b>	<b>84%</b>	<b>85%</b>	<b>85%</b>	<b>84%</b>	<b>84%</b>	<b>85%</b>	<b>86%</b>	<b>87%</b>	<b>84%</b>	<b>84%</b>	<b>83%</b>	<b>81%</b>



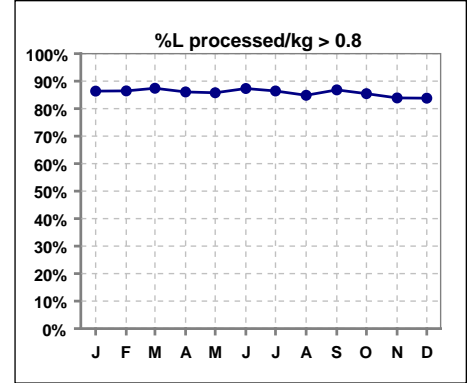
	Jan	Feb	Mar	Apr	May	Jun	Jul	Aug	Sep	Oct	Nov	Dec
# Pre Sys BP	1042	1020	1033	1027	1028	1010	1031	1040	1041	1044	1043	1019
# Pre Sys BP < 150	602	593	580	583	600	585	614	635	598	595	589	561
Pop. Mean	146	146	146	146	145	146	145	144	146	146	147	147
Std. Deviation	22.1	21.7	22.0	22.0	22.0	21.5	21.4	21.7	21.3	20.8	21.4	21.8
Network Mean												
Natl. Mean												
<b>% Pre Sys BP &lt; 150</b>	<b>58%</b>	<b>58%</b>	<b>56%</b>	<b>57%</b>	<b>58%</b>	<b>58%</b>	<b>60%</b>	<b>61%</b>	<b>57%</b>	<b>57%</b>	<b>56%</b>	<b>55%</b>



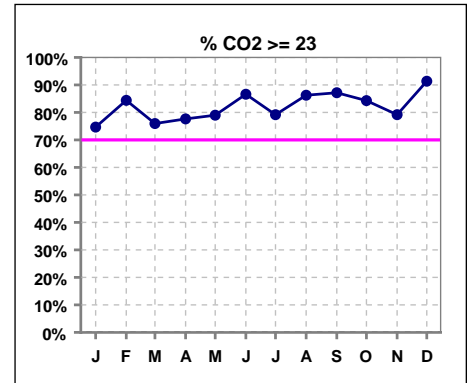
\*Methodology: a) Monthly values based on patient's monthly average of all values present for the month; b) Quarter values are average of all values for quarter; c) Values not averaged use last value present at months end.

**I. ADEQUACY OF DIALYSIS - CONT.**

	Jan	Feb	Mar	Apr	May	Jun	Jul	Aug	Sep	Oct	Nov	Dec
# L processed/kg	1042	1019	1033	1027	1026	1010	1031	1037	1040	1044	1043	1025
# L processed/kg>0.8	900	881	903	884	880	882	891	880	903	892	875	859
Pop. Mean	1	1	1	1	1	1	1	1	1	1	1	1
Std. Deviation	0.3	0.3	0.3	0.3	0.3	0.3	0.3	0.3	0.3	0.3	0.3	0.3
Network Mean												
Natl. Mean												
<b>% L processed/kg&gt;0.8</b>	<b>86%</b>	<b>86%</b>	<b>87%</b>	<b>86%</b>	<b>86%</b>	<b>87%</b>	<b>86%</b>	<b>85%</b>	<b>87%</b>	<b>85%</b>	<b>84%</b>	<b>84%</b>



	Jan	Feb	Mar	Apr	May	Jun	Jul	Aug	Sep	Oct	Nov	Dec
# CO2	1034	1006	1023	1011	1014	1001	1018	1026	1028	1025	1028	1006
# CO2 >= 23	772	849	777	785	801	867	806	885	896	864	814	919
Pop. Mean	24	25	24	25	25	26	25	25	26	25	25	26
Std. Deviation	3.11	2.90	3.16	3.18	3.20	3.11	3.09	2.95	3.12	3.17	3.16	2.93
Network Mean												
Natl. Mean												
<b>% CO2 &gt;= 23</b>	<b>75%</b>	<b>84%</b>	<b>76%</b>	<b>78%</b>	<b>79%</b>	<b>87%</b>	<b>79%</b>	<b>86%</b>	<b>87%</b>	<b>84%</b>	<b>79%</b>	<b>91%</b>

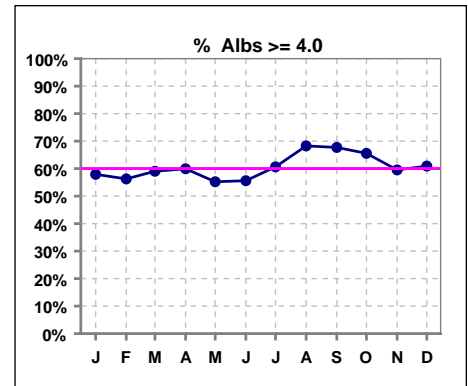


\*Methodology: a) Monthly values based on patient's monthly average of all values present for the month; b) Quarter values are average of all values for quarter; c) Values not averaged use last value present at months end.

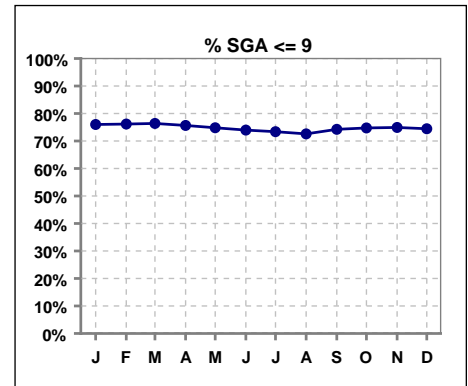
\*Albumin values use BCG method - as of July 2001

**II. NUTRITION**

	Jan	Feb	Mar	Apr	May	Jun	Jul	Aug	Sep	Oct	Nov	Dec
# Albumin	1034	1006	1023	1011	1014	1000	1019	1027	1028	1025	1028	1006
# Albumin >= 4.0	599	566	604	606	560	556	618	701	696	672	612	613
Pop. Mean	4.0	4.0	4.0	4.0	3.9	4.0	4.0	4.1	4.0	4.1	4.0	4.0
Std. Deviation	0.38	0.36	0.38	0.39	0.37	0.37	0.39	0.42	0.40	0.39	0.41	0.42
Network Mean	3.4	3.4	3.4	3.4	3.4	3.4	3.4	3.4	3.4	3.4	3.4	3.4
Natl. Mean	3.8	3.8	3.8	3.8	3.8	3.8	3.8	3.8	3.8	3.8	3.8	3.8
% Alb >= 3.5	90%	91%	91%	92%	92%	91%	92%	92%	92%	93%	91%	90%
% Alb >= 3.0	98%	99%	99%	98%	98%	98%	98%	98%	98%	99%	99%	97%
<b>% Alb &gt;= 4.0</b>	<b>58%</b>	<b>56%</b>	<b>59%</b>	<b>60%</b>	<b>55%</b>	<b>56%</b>	<b>61%</b>	<b>68%</b>	<b>68%</b>	<b>66%</b>	<b>60%</b>	<b>61%</b>
Netwk%>=3.5 '06	75%	75%	75%	75%	75%	75%	75%	82%	82%	82%	82%	82%
Netwk%>=4.0 '06	25%	25%	25%	25%	25%	25%	25%	34%	34%	34%	34%	34%
Natl % >= 3.5 '06	81%	81%	81%	81%	81%	81%	81%	81%	81%	81%	81%	81%
Natl. % >= 4.0 '06	39%	39%	39%	39%	39%	39%	39%	34%	34%	34%	34%	34%



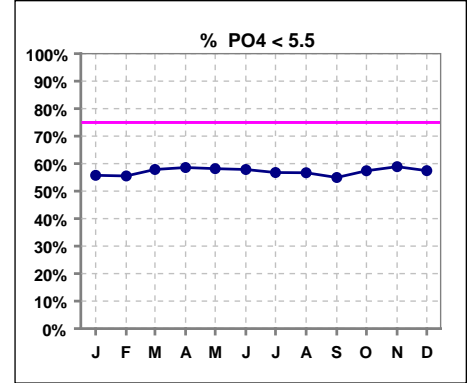
	Jan	Feb	Mar	Apr	May	Jun	Jul	Aug	Sep	Oct	Nov	Dec
# SGA	975	965	957	949	941	945	958	974	963	982	977	963
# SGA <=9	741	735	731	718	704	699	703	707	715	734	732	717
Pop. Mean	7	7	7	7	7	8	8	8	7	7	7	8
Std. Deviation	4.7	4.8	4.7	4.7	4.7	4.7	4.8	4.8	4.7	4.7	4.7	4.9
Network Mean												
Natl. Mean												
<b>% SGA &lt;= 9</b>	<b>76%</b>	<b>76%</b>	<b>76%</b>	<b>76%</b>	<b>75%</b>	<b>74%</b>	<b>73%</b>	<b>73%</b>	<b>74%</b>	<b>75%</b>	<b>75%</b>	<b>74%</b>



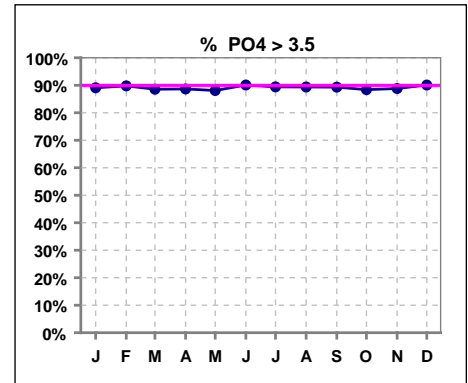
\*Methodology: a) Monthly values based on patient's monthly average of all values present for the month; b) Quarter values are average of all values for quarter; c) Values not averaged use last value present at months end.

**III. OSTEODYSTROPHY**

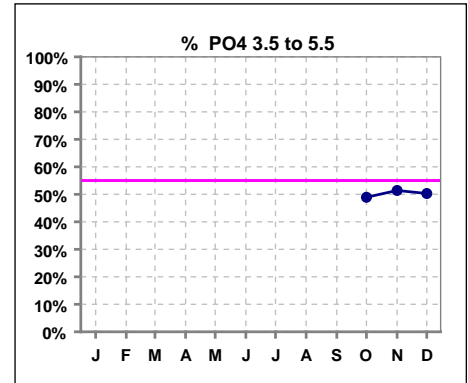
	Jan	Feb	Mar	Apr	May	Jun	Jul	Aug	Sep	Oct	Nov	Dec
# PO4	1035	1007	1023	1014	1016	999	1020	1025	1030	1026	1029	1008
# PO4 < 5.5	577	559	592	594	591	578	579	581	566	589	606	579
Pop. Mean	5.4	5.4	5.3	5.3	5.3	5.3	5.4	5.4	5.4	5.3	5.3	5.4
Std. Deviation	1.59	1.58	1.54	1.58	1.56	1.57	1.54	1.56	1.59	1.59	1.54	1.58
Network Mean												
Natl. Mean '06								5	5	5	5	5
<b>% PO4 &lt; 5.5</b>	<b>56%</b>	<b>56%</b>	<b>58%</b>	<b>59%</b>	<b>58%</b>	<b>58%</b>	<b>57%</b>	<b>57%</b>	<b>55%</b>	<b>57%</b>	<b>59%</b>	<b>57%</b>



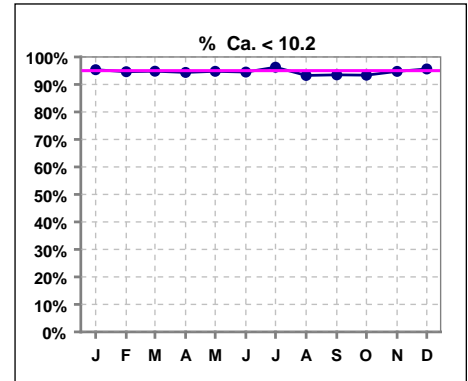
	Jan	Feb	Mar	Apr	May	Jun	Jul	Aug	Sep	Oct	Nov	Dec
# PO4	1035	1007	1023	1014	1016	999	1020	1025	1030	1026	1029	1008
# PO4 > 3.5	922	904	906	899	895	900	912	916	920	907	914	908
Pop. Mean	5.4	5.4	5.3	5.3	5.3	5.3	5.4	5.4	5.4	5.3	5.3	5.4
Std. Deviation	1.59	1.58	1.54	1.58	1.56	1.57	1.54	1.56	1.59	1.59	1.54	1.58
Network Mean												
Natl. Mean '06								5	5	5	5	5
<b>% PO4 &gt; 3.5</b>	<b>89%</b>	<b>90%</b>	<b>89%</b>	<b>89%</b>	<b>88%</b>	<b>90%</b>	<b>89%</b>	<b>89%</b>	<b>89%</b>	<b>88%</b>	<b>89%</b>	<b>90%</b>



	Jan	Feb	Mar	Apr	May	Jun	Jul	Aug	Sep	Oct	Nov	Dec
# PO4										1026	1029	1008
# PO4 3.5 to 5.5										502	529	507
Pop. Mean										5.3	5.3	5.4
Std. Deviation										1.59	1.54	1.58
Network Mean												
<b>% PO4 3.5 to 5.5</b>										<b>49%</b>	<b>51%</b>	<b>50%</b>



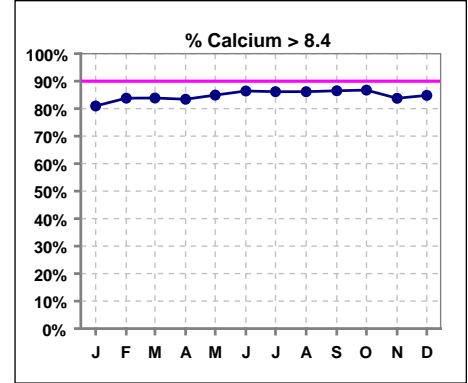
	Jan	Feb	Mar	Apr	May	Jun	Jul	Aug	Sep	Oct	Nov	Dec
# Calcium	1035	1007	1023	1013	1015	1001	1020	1026	1030	1026	1029	1008
# Calcium < 10.2	987	953	970	956	962	946	982	957	963	958	975	964
Pop. Mean	9.0	9.1	9.1	9.1	9.1	9.1	9.1	9.2	9.2	9.2	9.1	9.1
Std. Deviation	0.72	0.71	0.70	0.72	0.70	0.69	0.67	0.69	0.71	0.71	0.71	0.70
Network Mean												
Natl. Mean '06								9	9	9	9	9
<b>% Ca &lt; 10.2</b>	<b>95%</b>	<b>95%</b>	<b>95%</b>	<b>94%</b>	<b>95%</b>	<b>95%</b>	<b>96%</b>	<b>93%</b>	<b>93%</b>	<b>93%</b>	<b>95%</b>	<b>96%</b>



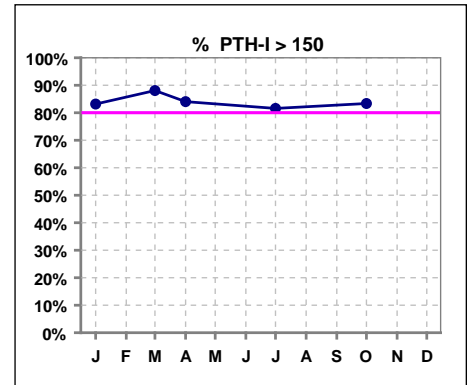
\*Methodology: a) Monthly values based on patient's monthly average of all values present for the month; b) Quarter values are average of all values for quarter; c) Values not averaged use last value present at months end.

**III. OSTEODYSTROPHY - CONT.**

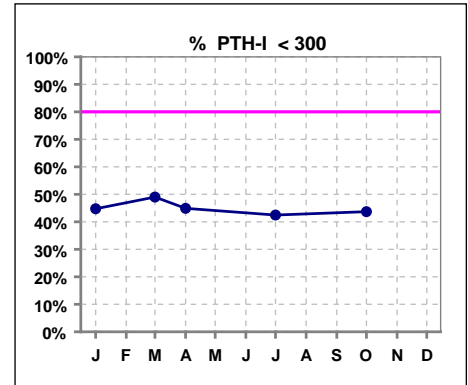
	Jan	Feb	Mar	Apr	May	Jun	Jul	Aug	Sep	Oct	Nov	Dec
# Calcium	1035	1007	1023	1013	1015	1001	1020	1026	1030	1026	1029	1008
# Calcium > 8.4	838	844	858	845	862	865	879	884	891	890	862	855
Pop. Mean	9.0	9.1	9.1	9.1	9.1	9.1	9.1	9.2	9.2	9.2	9.1	9.1
Std. Deviation	0.72	0.71	0.70	0.72	0.70	0.69	0.67	0.69	0.71	0.71	0.71	0.70
Network Mean												
Natl. Mean '06	9	9	9	9	9	9	9	9	9	9	9	9
<b>% Calcium &gt; 8.4</b>	<b>81%</b>	<b>84%</b>	<b>84%</b>	<b>83%</b>	<b>85%</b>	<b>86%</b>	<b>86%</b>	<b>86%</b>	<b>87%</b>	<b>87%</b>	<b>84%</b>	<b>85%</b>



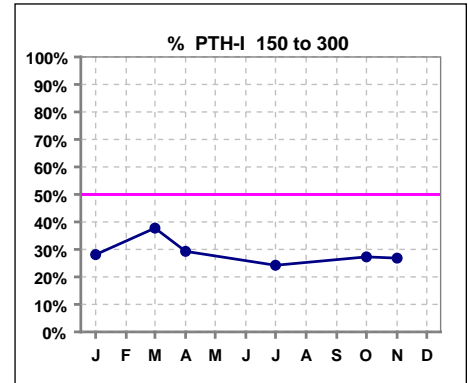
	Jan	Feb	Mar	Apr	May	Jun	Jul	Aug	Sep	Oct	Nov	Dec
# PTH-I	1028		302	884			1015			920		
# PTH-I > 150	855		266	743			828			767		
Pop. Mean	461		434	446			466			461		
Std. Deviation	472		400	448			477			471		
Network Mean												
Natl. Mean												
<b>% PTH-I &gt; 150</b>	<b>83%</b>		<b>88%</b>	<b>84%</b>			<b>82%</b>			<b>83%</b>		



	Jan	Feb	Mar	Apr	May	Jun	Jul	Aug	Sep	Oct	Nov	Dec
# PTH-I	1028		302	884			1015			920		
# PTH-I < 300	460		148	397			431			402		
Pop. Mean	461		434	446			466			461		
Std. Deviation	472		400	448			477			471		
Network Mean												
Natl. Mean												
<b>% PTH-I &lt; 300</b>	<b>45%</b>		<b>49%</b>	<b>45%</b>			<b>42%</b>			<b>44%</b>		



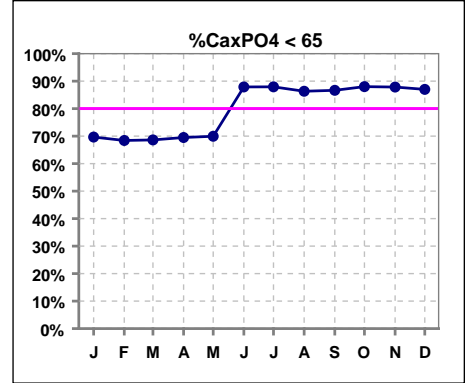
	Jan	Feb	Mar	Apr	May	Jun	Jul	Aug	Sep	Oct	Nov	Dec
# PTH-I	1028		302	884			1015			920	313	
# PTH-I 150 to 300	289		114	259			246			251	84	
Pop. Mean	461		434	446			466			461	485	
Std. Deviation	472		400	448			477			471	461	
Network Mean												
Natl. Mean												
<b>% PTH-I 150 to 300</b>	<b>28%</b>		<b>38%</b>	<b>29%</b>			<b>24%</b>			<b>27%</b>	<b>27%</b>	



\*Methodology: a) Monthly values based on patient's monthly average of all values present for the month; b) Quarter values are average of all values for quarter; c) Values not averaged use last value present at months end.

**III. OSTEODYSTROPHY - CONT.**

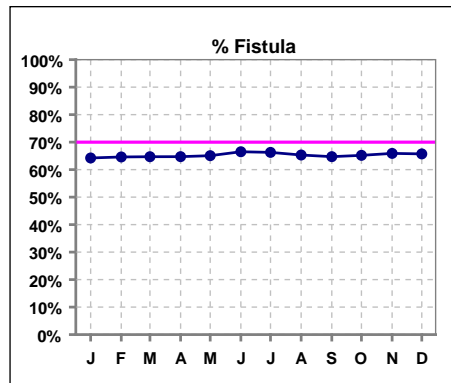
	Jan	Feb	Mar	Apr	May	Jun	Jul	Aug	Sep	Oct	Nov	Dec
# Ca x PO4	1035	1007	1023	1013	1015	999	1019	1024	1027	1025	1029	1008
# Ca x PO4 < 55	721	689	702	704	710							
# Ca x PO4 < 65						878	896	884	890	902	904	877
Pop. Mean	48.7	49.2	48.2	48.5	48.3	49.2	49.3	49.9	49.8	49.1	48.5	49.4
Std. Deviation	14.6	14.9	14.3	14.6	14.8	14.8	15.0	15.0	14.7	14.8	14.6	15.1
Network Mean												
Natl. Mean												
<b>% CaxPO4 &lt; 65</b>	<b>70%</b>	<b>68%</b>	<b>69%</b>	<b>69%</b>	<b>70%</b>	<b>88%</b>	<b>88%</b>	<b>86%</b>	<b>87%</b>	<b>88%</b>	<b>88%</b>	<b>87%</b>



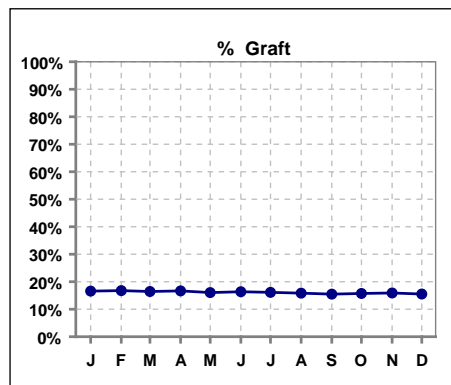
\*Methodology: a) Monthly values based on patient's monthly average of all values present for the month; b) Quarter values are average of all values for quarter; c) Values not averaged use last value present at months end.

**IV. ACCESS**

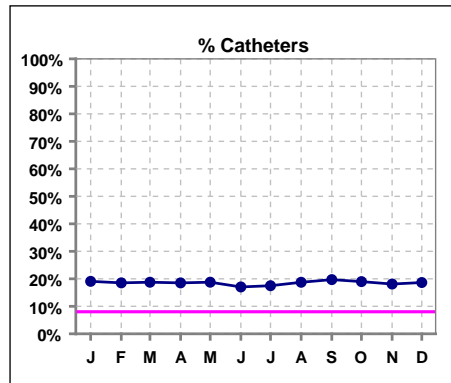
	Jan	Feb	Mar	Apr	May	Jun	Jul	Aug	Sep	Oct	Nov	Dec
# Access	1043	1020	1034	1026	1028	1009	1029	1035	1040	1043	1044	1024
# Fistula	670	659	669	664	669	671	682	676	673	680	688	673
Network % '06	58%	58%	58%	58%	58%	58%	58%	61%	61%	61%	61%	61%
Natl. % '06	39%	39%	39%	39%	39%	39%	39%	45%	45%	45%	45%	45%
% Fistula	64%	65%	65%	65%	65%	67%	66%	65%	65%	65%	66%	66%



	Jan	Feb	Mar	Apr	May	Jun	Jul	Aug	Sep	Oct	Nov	Dec
# Access	1043	1020	1034	1026	1028	1009	1029	1035	1040	1043	1044	1024
# Graft	173	171	170	171	165	165	166	164	161	164	166	159
Network %												
Natl. %												
% Graft	17%	17%	16%	17%	16%	16%	16%	16%	15%	16%	16%	16%

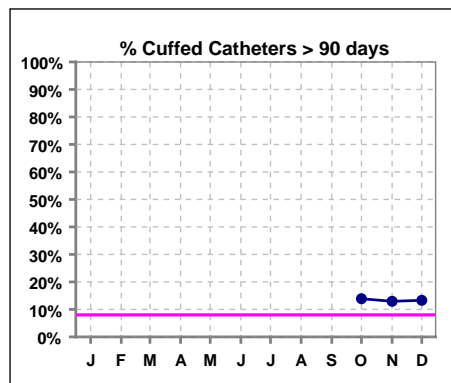


	Jan	Feb	Mar	Apr	May	Jun	Jul	Aug	Sep	Oct	Nov	Dec
# Access	1043	1020	1034	1026	1028	1009	1029	1035	1040	1043	1044	1024
# Catheters	199	189	194	190	193	172	180	194	205	198	189	191
Network % '06								22%	22%	22%	22%	22%
Natl. % '06	27%	27%	27%	27%	27%	27%	27%	29%	29%	29%	29%	29%
% Catheters	19%	19%	19%	19%	19%	17%	17%	19%	20%	19%	18%	19%



**Cuffed Catheters > 90 days**

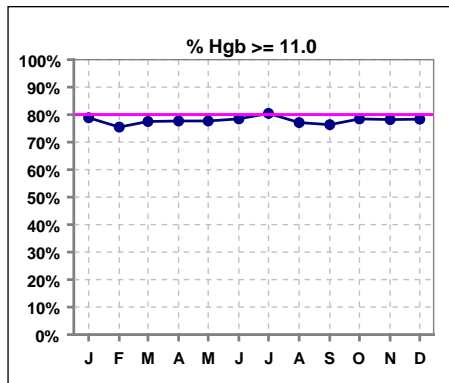
	Jan	Feb	Mar	Apr	May	Jun	Jul	Aug	Sep	Oct	Nov	Dec
# Access										1043	1044	1024
# Cuffed Catheters										133	124	127
Network % '06										22%	22%	22%
Natl. % '06										29%	29%	29%
% Cuffed Catheters										14%	13%	13%



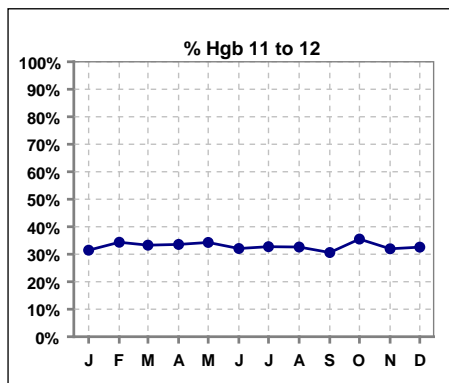
\*Methodology: a) Monthly values based on patient's monthly average of all values present for the month; b) Quarter values are average of all values for quarter; c) Values not averaged use last value present at months end.

**V. ANEMIA**

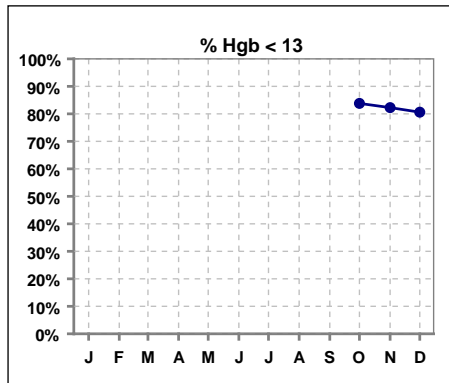
	Jan	Feb	Mar	Apr	May	Jun	Jul	Aug	Sep	Oct	Nov	Dec
# Hgb	1036	1007	1027	1013	1018	1007	1023	1027	1032	1025	1032	1016
# Hgb >= 11.0	817	760	796	787	791	790	823	792	788	804	807	796
Pop. Mean	11.9	11.8	11.9	11.8	11.8	11.9	11.9	11.8	11.9	11.8	11.9	11.9
Std. Deviation	1.3	1.3	1.3	1.2	1.3	1.3	1.2	1.3	1.3	1.3	1.3	1.3
Network Mean	11.8	11.8	11.8	11.8	11.8	11.8	11.8	11.8	11.8	11.8	11.8	11.8
Natl. Mean '06								12	12	12	12	12
<b>% Hgb &gt;= 11.0</b>	<b>79%</b>	<b>75%</b>	<b>78%</b>	<b>78%</b>	<b>78%</b>	<b>78%</b>	<b>80%</b>	<b>77%</b>	<b>76%</b>	<b>78%</b>	<b>78%</b>	<b>78%</b>
% Hgb <= 11.0	22%	27%	23%	24%	24%	23%	21%	24%	25%	22%	23%	23%
% Netwk >= 11 '06	80%	80%	80%	80%	80%	80%	80%	87%	87%	87%	87%	87%
% Natl. >= 11 '06	80%	80%	80%	80%	80%	80%	80%	84%	84%	84%	84%	84%



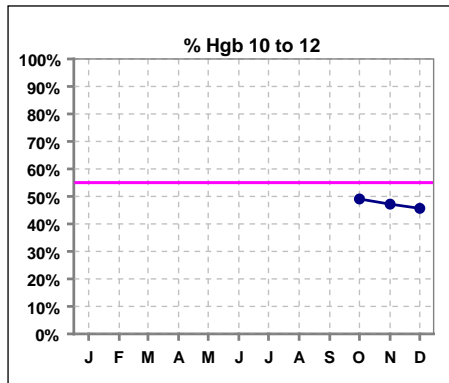
	Jan	Feb	Mar	Apr	May	Jun	Jul	Aug	Sep	Oct	Nov	Dec
# Hgb	1036	1007	1027	1013	1018	1007	1023	1027	1032	1025	1032	1016
# Hgb 11 to 12	326	346	342	340	349	323	335	335	316	364	330	331
Pop. Mean	11.9	11.8	11.9	11.8	11.8	11.9	11.9	11.8	11.9	11.8	11.9	11.9
Std. Deviation	1.3	1.3	1.3	1.2	1.3	1.3	1.2	1.3	1.3	1.3	1.3	1.3
Network Mean	11.8	11.8	11.8	11.8	11.8	11.8	11.8	11.8	11.8	11.8	11.8	11.8
Natl. Mean '06								12	12	12	12	12
<b>% Hgb 11 to 12</b>	<b>31%</b>	<b>34%</b>	<b>33%</b>	<b>34%</b>	<b>34%</b>	<b>32%</b>	<b>33%</b>	<b>33%</b>	<b>31%</b>	<b>36%</b>	<b>32%</b>	<b>33%</b>



	Jan	Feb	Mar	Apr	May	Jun	Jul	Aug	Sep	Oct	Nov	Dec
# Hgb										1025	1032	1016
# Hgb < 13										859	849	819
Pop. Mean										11.8	11.9	11.9
Std. Deviation										1.3	1.3	1.3
Network Mean										11.8	11.8	11.8
<b>% Hgb &lt; 13</b>										<b>84%</b>	<b>82%</b>	<b>81%</b>



	Jan	Feb	Mar	Apr	May	Jun	Jul	Aug	Sep	Oct	Nov	Dec
# Hgb										1025	1032	1016
# Hgb 10 to 12										503	487	464
Pop. Mean										11.8	11.9	11.9
Std. Deviation										1.3	1.3	1.3
Network Mean										11.8	11.8	11.8
<b>% Hgb 10 to 12</b>										<b>49%</b>	<b>47%</b>	<b>46%</b>

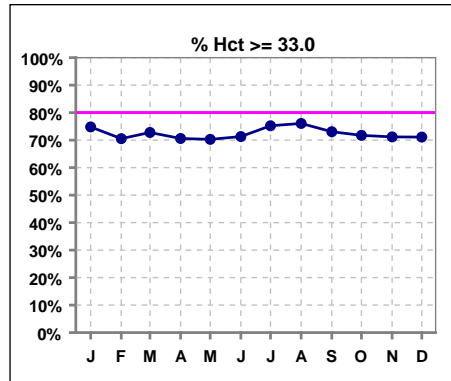


\*Methodology: a) Monthly values based on patient's monthly average of all values present for the month; b) Quarter values are average of all values for quarter; c) Values not averaged use last value present at months end.



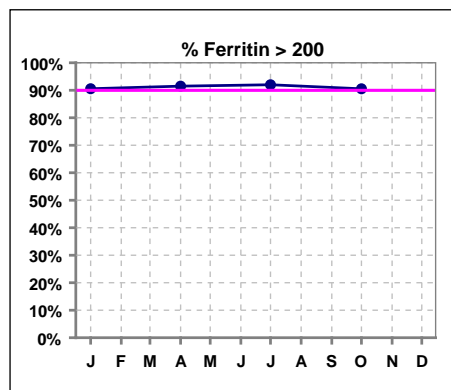
**V. ANEMIA - CONT.**

	Jan	Feb	Mar	Apr	May	Jun	Jul	Aug	Sep	Oct	Nov	Dec
# Hct	1036	1008	1029	1017	1023	1007	1025	1028	1032	1026	1034	1021
# Hct >= 33.0	775	711	749	718	719	718	771	782	754	736	736	726
Pop. Mean	35	35	35	35	35	35	35	36	35	35	35	35
Std. Deviation	3.73	3.84	3.79	3.69	3.89	3.81	3.65	3.94	4.05	3.83	3.90	3.86
Network Mean												
Natl. Mean												
<b>% Hct &gt;= 33.0</b>	<b>75%</b>	<b>71%</b>	<b>73%</b>	<b>71%</b>	<b>70%</b>	<b>71%</b>	<b>75%</b>	<b>76%</b>	<b>73%</b>	<b>72%</b>	<b>71%</b>	<b>71%</b>
<b>% Netwk &gt;= 33 '05</b>	<b>94%</b>	<b>94%</b>	<b>94%</b>	<b>94%</b>	<b>94%</b>	<b>94%</b>	<b>94%</b>	<b>94%</b>	<b>94%</b>	<b>94%</b>	<b>94%</b>	<b>94%</b>
<b>% Natl. &gt;= 33 '05</b>	<b>92%</b>	<b>92%</b>	<b>92%</b>	<b>92%</b>	<b>92%</b>	<b>92%</b>	<b>92%</b>	<b>92%</b>	<b>92%</b>	<b>92%</b>	<b>92%</b>	<b>92%</b>

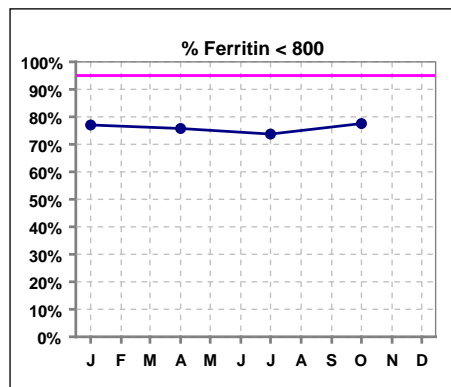


**Iron Profile**

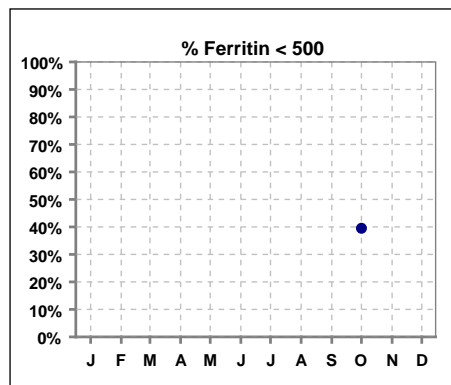
	Jan	Feb	Mar	Apr	May	Jun	Jul	Aug	Sep	Oct	Nov	Dec
# Ferritin	1028			1011			1013			1025		
# Ferritin >= 100	997			979								
# Ferritin > 200							932			928		
Pop. Mean	602			606			634			605		
Std. Deviation	360			342			371			342		
Network Mean												
Natl. Mean '06	583			583			583			583		
<b>% Ferritin &gt; 200</b>	<b>91%</b>			<b>91%</b>			<b>92%</b>			<b>91%</b>		
<b>% Netwk &gt;= 100 '06</b>	<b>93%</b>			<b>93%</b>			<b>93%</b>			<b>93%</b>		
<b>% Natl. &gt;=100 '06</b>	<b>95%</b>			<b>95%</b>			<b>95%</b>			<b>95%</b>		



	Jan	Feb	Mar	Apr	May	Jun	Jul	Aug	Sep	Oct	Nov	Dec
# Ferritin	1028			1011			1013			1025		
# Ferritin < 800	792			766			747			795		
Pop. Mean	602			606			634			605		
Std. Deviation	360			342			371			342		
Network Mean												
Natl. Mean '06										583		
<b>% Ferritin &lt; 800</b>	<b>77%</b>			<b>76%</b>			<b>74%</b>			<b>78%</b>		



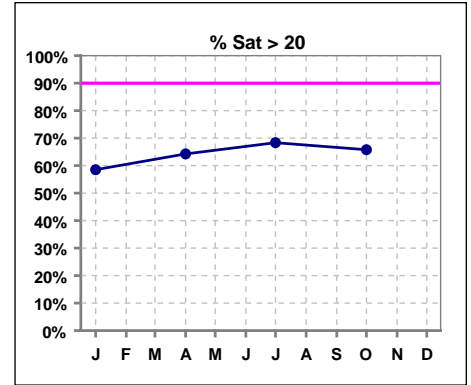
	Jan	Feb	Mar	Apr	May	Jun	Jul	Aug	Sep	Oct	Nov	Dec
# Ferritin										1025		
# Ferritin < 500										405		
Pop. Mean										605		
Std. Deviation										342		
Network Mean												
<b>% Ferritin &lt; 500</b>										<b>40%</b>		



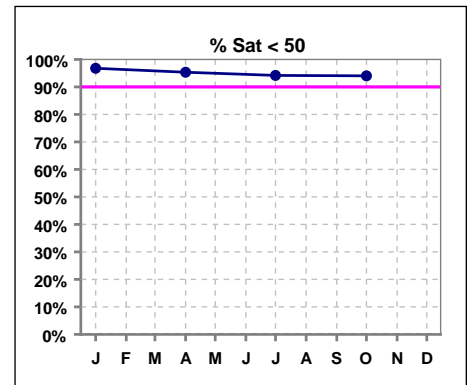
\*Methodology: a) Monthly values based on patient's monthly average of all values present for the month; b) Quarter values are average of all values for quarter; c) Values not averaged use last value present at months end.

**V. ANEMIA - CONT.**

	Jan	Feb	Mar	Apr	May	Jun	Jul	Aug	Sep	Oct	Nov	Dec
# % Sat	1027			1010			1014			1023		
# % Sat > 20	601			649			693			673		
Pop. Mean	25			26			27			27		
Std. Deviation	12			13			13			13		
Network Mean												
Natl. Mean '06	28			28			28			28		
<b>% Sat% &gt; 20</b>	59%			64%			68%			66%		
<b>% Netwk &gt;= 20 '06</b>	74%			74%			74%			74%		
<b>% Natl. &gt;=20 '06</b>	79%			79%			79%			79%		



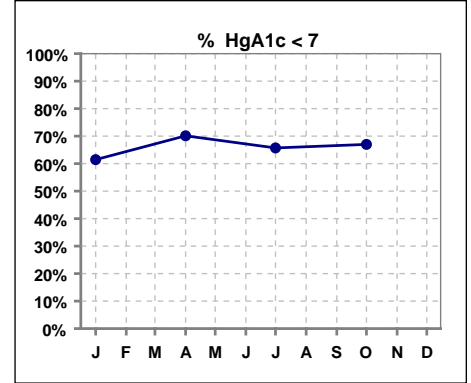
	Jan	Feb	Mar	Apr	May	Jun	Jul	Aug	Sep	Oct	Nov	Dec
# % Sat	1027			1010			1014			1023		
# % Sat < 50	994			963			955			962		
Pop. Mean	25			26			27			27		
Std. Deviation	12			13			13			13		
Network Mean												
Natl. Mean '06										28		
<b>% Sat% &lt; 50</b>	97%			95%			94%			94%		



\*Methodology: a) Monthly values based on patient's monthly average of all values present for the month; b) Quarter values are average of all values for quarter; c) Values not averaged use last value present at months end.

**VI. Diabetes**

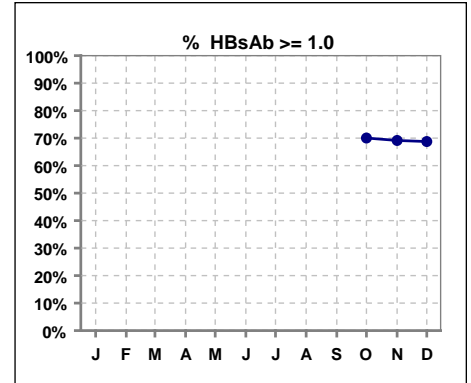
	Jan	Feb	Mar	Apr	May	Jun	Jul	Aug	Sep	Oct	Nov	Dec
# HgA1c	524			512			519			506		
# HgA1c < 7	322			359			341			339		
Pop. Mean	6.8			6.5			6.6			6.6		
Std. Deviation	1.67			1.34			1.40			1.34		
Network Mean												
Natl. Mean												
<b>% HgA1c &lt; 7</b>	<b>61%</b>			<b>70%</b>			<b>66%</b>			<b>67%</b>		



\*Methodology: a) Monthly values based on patient's monthly average of all values present for the month; b) Quarter values are average of all values for quarter; c) Values not averaged use last value present at months end.

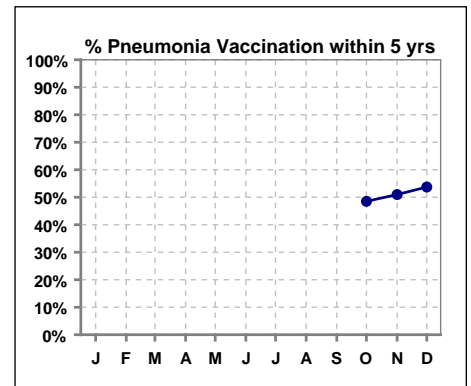
**VII. Infection Control**

	Jan	Feb	Mar	Apr	May	Jun	Jul	Aug	Sep	Oct	Nov	Dec
# Patient										1068	1073	1050
# HBsAb >= 1.0										748	742	722
<b>% HBsAb &gt;= 1.0</b>										<b>70%</b>	<b>69%</b>	<b>69%</b>



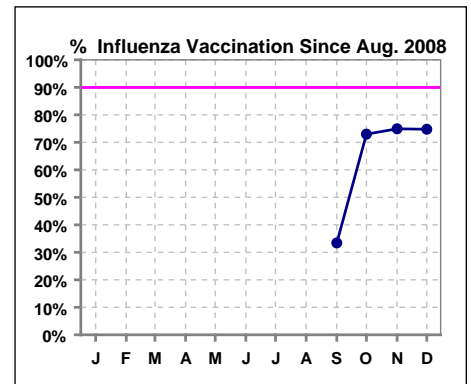
**Pneumonia vaccination within the past five years at NKC**

	Jan	Feb	Mar	Apr	May	Jun	Jul	Aug	Sep	Oct	Nov	Dec
# Patient										1068	1073	1050
# Pneumonia										518	547	564
<b>% Pneumonia</b>										<b>49%</b>	<b>51%</b>	<b>54%</b>



**Influenza vaccination since August at NKC**

	Jan	Feb	Mar	Apr	May	Jun	Jul	Aug	Sep	Oct	Nov	Dec
# Patient								1091	1074	1088	1073	1050
# Influenza since 08/08								359	794	804	785	
<b>% Influenza</b>								<b>33%</b>	<b>73%</b>	<b>75%</b>	<b>75%</b>	



\*Methodology: a) Monthly values based on patient's monthly average of all values present for the month; b) Quarter values are average of all values for quarter; c) Values not averaged use last value present at months end.