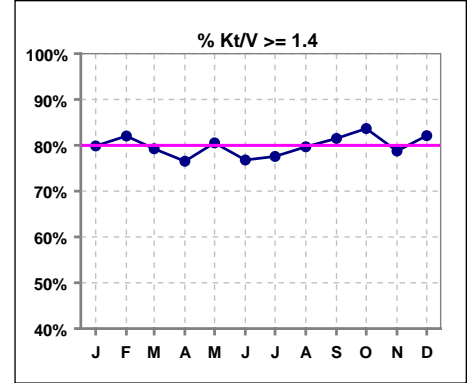


I. ADEQUACY OF DIALYSIS

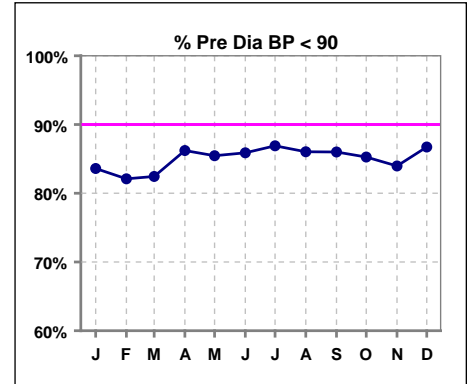
	Jan	Feb	Mar	Apr	May	Jun	Jul	Aug	Sep	Oct	Nov	Dec
# Kt/V	983	979	968	971	986	1004	1030	1033	1011	991	1002	1000
# Kt/V >= 1.4	785	803	767	743	794	771	799	823	824	829	789	821
Pop. Mean =	1.65	1.69	1.65	1.62	1.66	1.59	1.79	1.65	1.68	1.70	1.65	1.67
Std. Deviation =	0.40	0.41	0.41	0.38	0.47	0.36	3.75	0.39	0.37	0.45	0.49	0.37
Network Mean =	1.59	1.59	1.59	1.59	1.59	1.59	1.59	1.59	1.59	1.59	1.59	1.59
Natl. Mean =												
% Kt/V >= 1.4	80%	82%	79%	77%	81%	77%	78%	80%	82%	84%	79%	82%
**% Kt/V >= 1.2	92%	94%	93%	91%	92%	90%	91%	92%	93%	94%	91%	93%

** As of Apr. '04

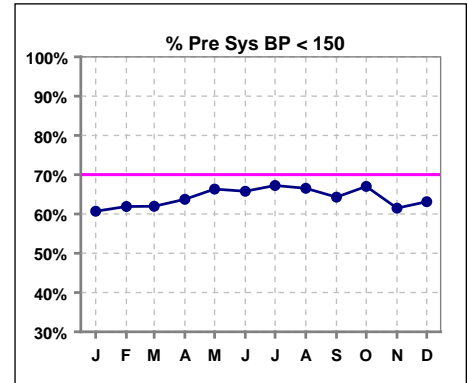


Blood Pressure Control (Pre)

	Jan	Feb	Mar	Apr	May	Jun	Jul	Aug	Sep	Oct	Nov	Dec
# Pre Dia BP	1000	1000	991	1001	1004	1020	1084	1067	1036	1025	1023	1017
# Pre Dia BP < 90	836	821	817	863	858	876	942	918	891	874	859	882
Pop. Mean =	78	78	77	77	76	76	76	76	76	76	78	76
Std. Deviation =	13.9	13.7	13.9	13.7	13.5	13.4	12.0	10.6	10.7	11.7	25.6	14.4
Network Mean =												
Natl. Mean =												
% Pre Dia BP < 90	84%	82%	82%	86%	85%	86%	87%	86%	86%	85%	84%	87%



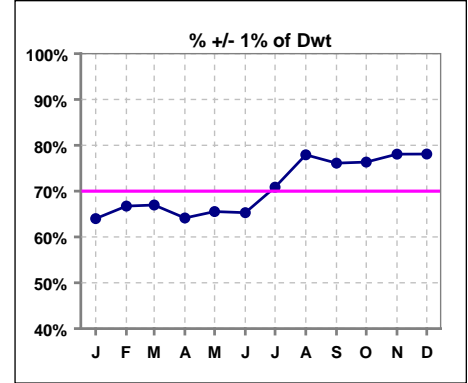
	Jan	Feb	Mar	Apr	May	Jun	Jul	Aug	Sep	Oct	Nov	Dec
# Pre Sys BP	1000	1000	991	1001	1004	1020	1084	1067	1036	1025	1023	1017
# Pre Sys BP < 150	607	619	614	638	666	671	729	710	666	687	629	642
Pop. Mean =	144	144	143	143	142	142	141	142	143	142	144	144
Std. Deviation =	19.7	20.4	20.1	19.9	19.8	20.1	14.9	14.7	14.5	14.5	21.0	19.8
Network Mean =												
Natl. Mean =												
% Pre Sys BP < 150	61%	62%	62%	64%	66%	66%	67%	67%	64%	67%	61%	63%



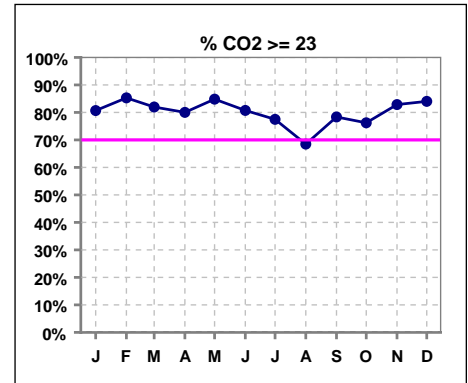
*Methodology: a) Monthly values based on patient's monthly average of all values present for the month; b) Quarter values are average of all values for quarter; c) Values not averaged use last value present at months end.

I. ADEQUACY OF DIALYSIS - CONT.

	Jan	Feb	Mar	Apr	May	Jun	Jul	Aug	Sep	Oct	Nov	Dec
# Post/Dwt	1000	998	990	1001	1004	1020	1088	1069	1038	1031	1026	1018
# +/- 1% of Dwt	640	666	663	642	658	666	771	833	790	787	801	795
% +/- 1% of Dwt	64%	67%	67%	64%	66%	65%	71%	78%	76%	76%	78%	78%



	Jan	Feb	Mar	Apr	May	Jun	Jul	Aug	Sep	Oct	Nov	Dec
# CO2	994	993	987	996	1002	1017	1079	1063	1030	1018	1021	1008
# CO2 >= 23	802	847	809	797	850	821	836	728	807	776	846	847
Pop. Mean =	25	25	25	25	25	25	25	24	25	25	25	25
Std. Deviation =	4.19	3.79	3.68	3.64	3.45	3.54	3.42	3.49	3.10	3.27	3.37	3.10
Network Mean =												
Natl. Mean =												
% CO2 >= 23	81%	85%	82%	80%	85%	81%	77%	68%	78%	76%	83%	84%



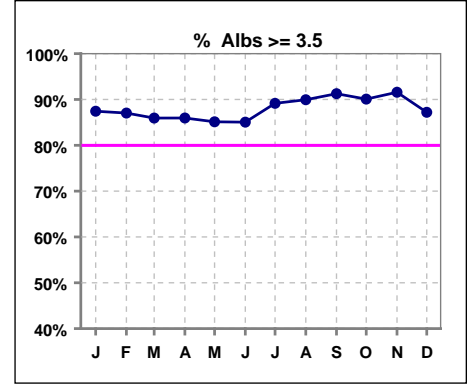
*Methodology: a) Monthly values based on patient's monthly average of all values present for the month; b) Quarter values are average of all values for quarter; c) Values not averaged use last value present at months end.

*Albumin values use BCG method - as of July 2001

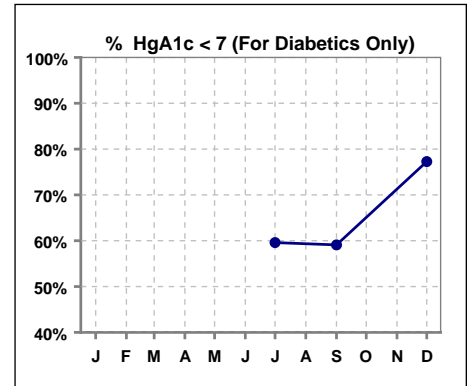
II. NUTRITION

	Jan	Feb	Mar	Apr	May	Jun	Jul	Aug	Sep	Oct	Nov	Dec
# Albumin	995	995	989	997	1002	1017	1079	1064	1030	1018	1021	1008
# Albumin >= 3.5	870	866	850	857	853	865	962	957	940	917	935	879
Pop. Mean =	3.8	3.9	3.8	3.8	3.8	3.8	3.9	3.9	4.0	4.0	4.0	3.9
Std. Deviation =	0.37	0.38	0.38	0.36	0.37	0.37	0.41	0.40	0.39	0.39	0.37	0.42
Network Mean =	3.4	3.4	3.4	3.4	3.4	3.4	3.4	3.4	3.4	3.4	3.4	3.4
Natl. Mean =	3.8	3.8	3.8	3.8	3.8	3.8	3.8	3.8	3.8	3.8	3.8	3.8
% Alb >= 3.5	87%	87%	86%	86%	85%	85%	89%	90%	91%	90%	92%	87%
% Alb >= 4.0	41%	45%	41%	37%	38%	34%	52%	53%	59%	57%	57%	53%
*Natl % >= 3.5-BCG	81%	81%	81%	81%	81%	81%	81%	81%	81%	81%	81%	81%
*Natl. % >= 4.0-BCG	39%	39%	39%	39%	39%	39%	39%	39%	39%	39%	39%	39%

*Figures for 2004



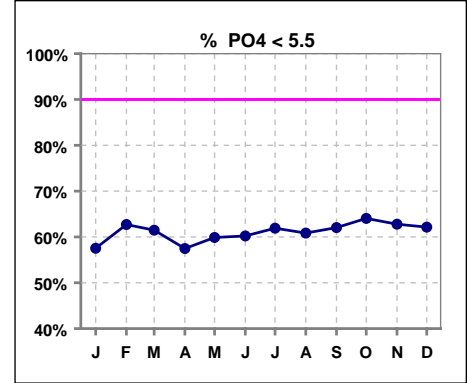
	Jan	Feb	Mar	Apr	May	Jun	Jul	Aug	Sep	Oct	Nov	Dec
# HgA1c							297		22			22
# HgA1c < 7							177		13			17
Pop. Mean =							6.8		6.9			6.2
Std. Deviation =							1.57		1.64			1.12
Network Mean =												
Natl. Mean =												
% HgA1c < 7							60%		59%			77%



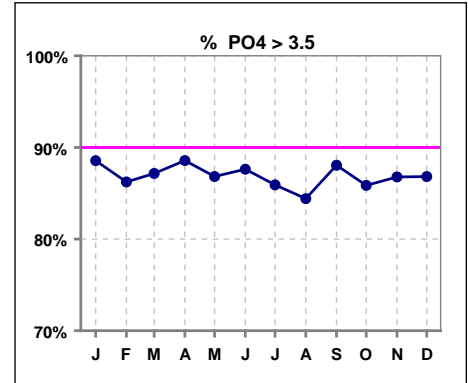
*Methodology: a) Monthly values based on patient's monthly average of all values present for the month; b) Quarter values are average of all values for quarter; c) Values not averaged use last value present at months end.

III. OSTEODYSTROPHY

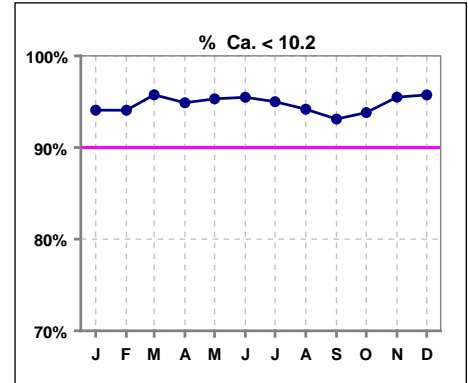
	Jan	Feb	Mar	Apr	May	Jun	Jul	Aug	Sep	Oct	Nov	Dec
# PO4	996	995	989	997	1002	1018	1079	1065	1030	1018	1021	1009
# PO4 < 5.5	573	624	608	573	600	613	668	648	639	652	641	627
Pop. Mean =	5.3	5.1	5.1	5.3	5.2	5.2	5.2	5.2	5.2	5.1	5.1	5.2
Std. Deviation =	1.55	1.51	1.43	1.49	1.53	1.50	1.59	1.67	1.60	1.46	1.49	1.49
Network Mean =												
Natl. Mean =												
% PO4 < 5.5	58%	63%	61%	57%	60%	60%	62%	61%	62%	64%	63%	62%



	Jan	Feb	Mar	Apr	May	Jun	Jul	Aug	Sep	Oct	Nov	Dec
# PO4	996	995	989	997	1002	1018	1079	1065	1030	1018	1021	1009
# PO4 > 3.5	882	858	862	883	870	892	927	899	907	874	886	876
Pop. Mean =	5.3	5.1	5.1	5.3	5.2	5.2	5.2	5.2	5.2	5.1	5.1	5.2
Std. Deviation =	1.55	1.51	1.43	1.49	1.53	1.50	1.59	1.67	1.60	1.46	1.49	1.49
Network Mean =												
Natl. Mean =												
% PO4 > 3.5	89%	86%	87%	89%	87%	88%	86%	84%	88%	86%	87%	87%



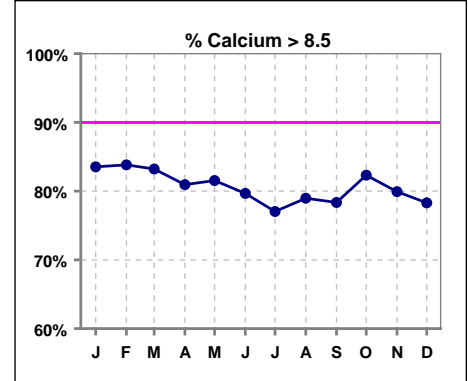
	Jan	Feb	Mar	Apr	May	Jun	Jul	Aug	Sep	Oct	Nov	Dec
# Calcium	996	995	989	997	1002	1018	1080	1065	1030	1018	1021	1009
# Calcium < 10.2	937	936	947	946	955	972	1026	1003	959	955	975	966
Pop. Mean =	9.2	9.2	9.1	9.1	9.1	9.1	9.0	9.1	9.1	9.2	9.1	9.0
Std. Deviation =	0.73	0.70	0.67	0.74	0.71	0.73	0.74	0.71	0.72	0.68	0.69	0.71
Network Mean =												
Natl. Mean =												
% Ca < 10.2	94%	94%	96%	95%	95%	95%	95%	94%	93%	94%	95%	96%



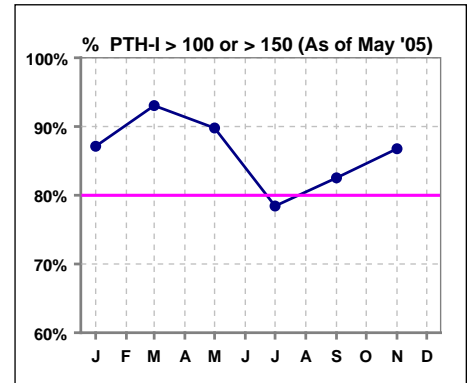
*Methodology: a) Monthly values based on patient's monthly average of all values present for the month; b) Quarter values are average of all values for quarter; c) Values not averaged use last value present at months end.

III. OSTEODYSTROPHY - CONT.

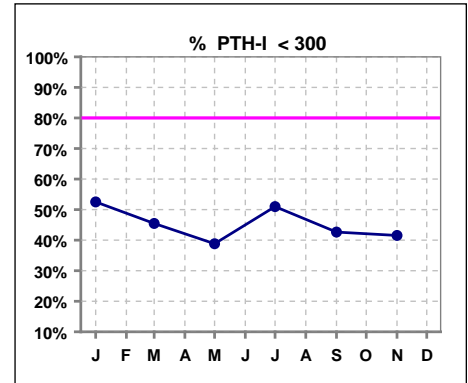
	Jan	Feb	Mar	Apr	May	Jun	Jul	Aug	Sep	Oct	Nov	Dec
# Calcium	996	995	989	997	1002	1018	1080	1065	1030	1018	1021	1009
# Calcium > 8.5	832	834	823	807	817	811	832	841	807	838	816	790
Pop. Mean =	9.2	9.2	9.1	9.1	9.1	9.1	9.0	9.1	9.1	9.2	9.1	9.0
Std. Deviation =	0.73	0.70	0.67	0.74	0.71	0.73	0.74	0.71	0.72	0.68	0.69	0.71
Network Mean =												
Natl. Mean =												
% Calcium > 8.5	84%	84%	83%	81%	82%	80%	77%	79%	78%	82%	80%	78%



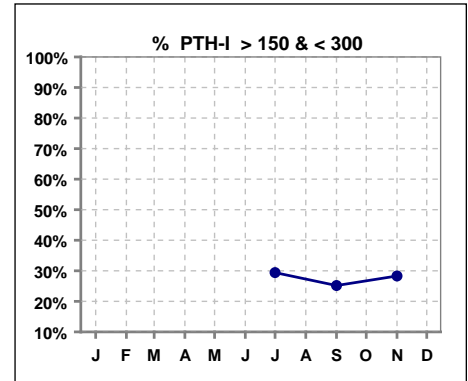
	Jan	Feb	Mar	Apr	May	Jun	Jul	Aug	Sep	Oct	Nov	Dec
# PTH-I	994		805		783		1071		830		816	
# PTH-I > 100	866		749									
# PTH-I > 150					703		840		685		708	
Pop. Mean =	379		344		368		411		484		487	
Std. Deviation =	386		362		410		409		466		430	
Network Mean =												
Natl. Mean =												
% PTH-I > 100 or > 150 (As of May '05)	87%		93%		90%		78%		83%		87%	



	Jan	Feb	Mar	Apr	May	Jun	Jul	Aug	Sep	Oct	Nov	Dec
# PTH-I	994		805		783		1071		830		816	
# PTH-I < 300	522		366		304		546		354		339	
Pop. Mean =	379		344		368		411		484		487	
Std. Deviation =	386		362		410		409		466		430	
Network Mean =												
Natl. Mean =												
% PTH-I < 300	53%		45%		39%		51%		43%		42%	



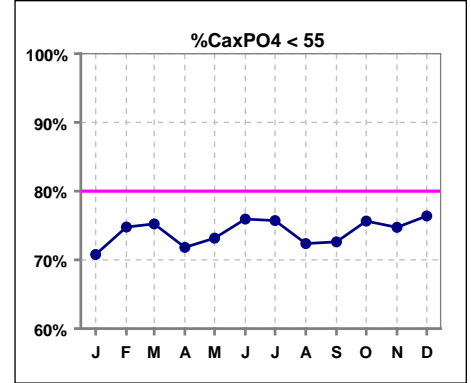
	Jan	Feb	Mar	Apr	May	Jun	Jul	Aug	Sep	Oct	Nov	Dec
# PTH-I							1071		830		816	
# PTH-I > 150 & < 300							315		209		231	
Pop. Mean =							411		484		487	
Std. Deviation =							409		466		430	
Network Mean =												
Natl. Mean =												
% PTH-I > 150 & < 300							29%		25%		28%	



*Methodology: a) Monthly values based on patient's monthly average of all values present for the month; b) Quarter values are average of all values for quarter; c) Values not averaged use last value present at months end.

III. OSTEODYSTROPHY - CONT.

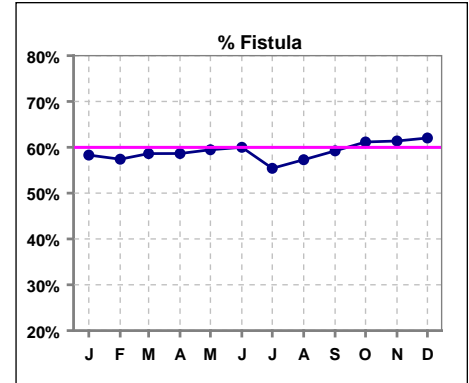
	Jan	Feb	Mar	Apr	May	Jun	Jul	Aug	Sep	Oct	Nov	Dec
# Ca x PO4	996	995	989	997	1002	1018	1079	1064	1030	1018	1021	1008
# Ca x PO4 < 55	705	744	744	716	733	773	817	770	748	770	763	770
Pop. Mean =	48.3	47.2	46.9	48.1	47.7	46.8	46.6	47.6	47.9	47.0	46.6	46.5
Std. Deviation =	14.3	14.0	13.1	13.6	13.9	13.6	14.4	15.3	14.9	13.7	14.1	13.6
Network Mean =												
Natl. Mean =												
% CaxPO4 < 55	71%	75%	75%	72%	73%	76%	76%	72%	73%	76%	75%	76%



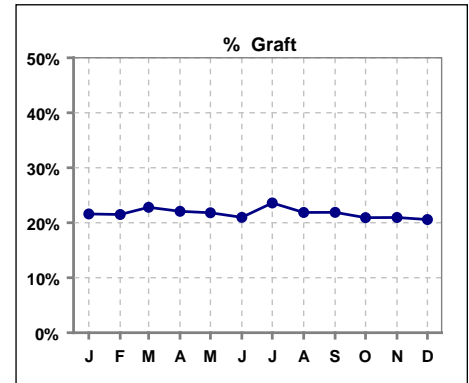
*Methodology: a) Monthly values based on patient's monthly average of all values present for the month; b) Quarter values are average of all values for quarter; c) Values not averaged use last value present at months end.

IV. ACCESS

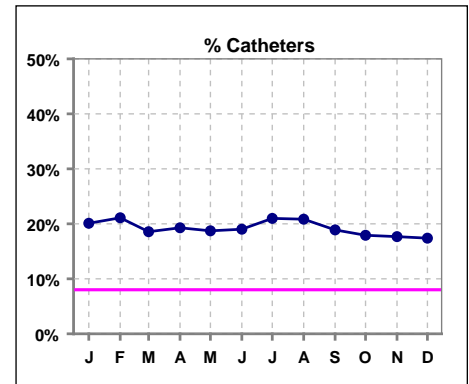
	Jan	Feb	Mar	Apr	May	Jun	Jul	Aug	Sep	Oct	Nov	Dec
# Access	1000	1000	991	1001	1004	1020	767	782	868	932	945	690
# Fistula	583	574	581	587	597	612	425	448	514	570	580	428
Network % - 2004	55%	55%	55%	55%	55%	55%	55%	55%	55%	55%	55%	55%
Natl. % - 2004	35%	35%	35%	35%	35%	35%	35%	35%	35%	35%	35%	35%
% Fistula	58%	57%	59%	59%	59%	60%	55%	57%	59%	61%	61%	62%



	Jan	Feb	Mar	Apr	May	Jun	Jul	Aug	Sep	Oct	Nov	Dec
# Access	1000	1000	991	1001	1004	1020	767	782	868	932	945	690
# Graft	216	215	226	221	219	214	181	171	190	195	198	142
Network %												
Natl. %												
% Graft	22%	22%	23%	22%	22%	21%	24%	22%	22%	21%	21%	21%



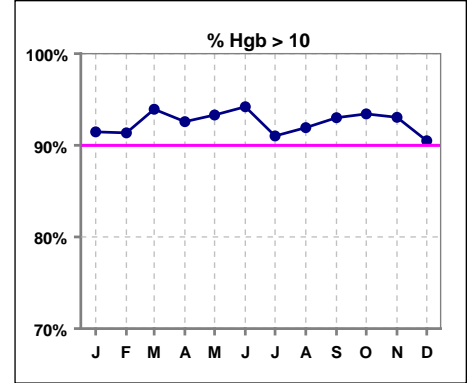
	Jan	Feb	Mar	Apr	May	Jun	Jul	Aug	Sep	Oct	Nov	Dec
# Access	1000	1000	991	1001	1004	1020	767	782	868	932	945	690
# Catheters	201	211	184	193	188	194	161	163	164	167	167	120
Network %												
Natl. % - 2004	27%	27%	27%	27%	27%	27%	27%	27%	27%	27%	27%	27%
% Catheters	20%	21%	19%	19%	19%	19%	21%	21%	19%	18%	18%	17%



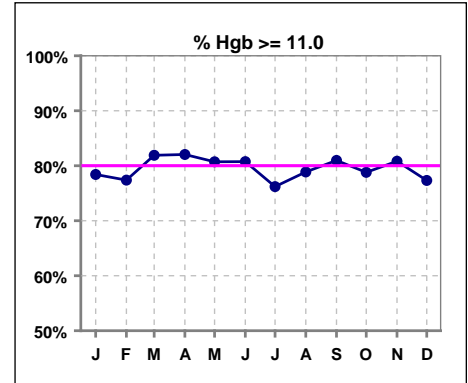
*Methodology: a) Monthly values based on patient's monthly average of all values present for the month; b) Quarter values are average of all values for quarter; c) Values not averaged use last value present at months end.

V. ANEMIA

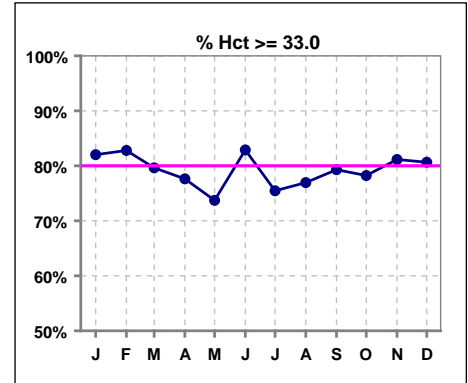
	Jan	Feb	Mar	Apr	May	Jun	Jul	Aug	Sep	Oct	Nov	Dec
# Hgb	996	995	989	997	1001	1018	1080	1065	1030	1019	1022	1010
# Hgb > 10.0	911	909	929	923	934	959	983	979	958	952	951	914
Pop. Mean =	11.9	11.9	12.0	12.0	12.0	12.0	11.8	11.9	12.0	11.9	11.9	11.7
Std. Deviation =	1.4	1.3	1.3	1.3	1.3	1.3	1.4	1.3	1.3	1.3	1.3	1.3
Network Mean =	11.8	11.8	11.8	11.8	11.8	11.8	11.8	11.8	11.8	11.8	11.8	11.8
Natl. Mean =												
% Hgb > 10.0	91%	91%	94%	93%	93%	94%	91%	92%	93%	93%	93%	90%



	Jan	Feb	Mar	Apr	May	Jun	Jul	Aug	Sep	Oct	Nov	Dec
# Hgb	996	995	989	997	1001	1018	1080	1065	1030	1019	1022	1010
# Hgb >= 11.0	781	770	810	818	808	822	823	840	834	803	826	781
Pop. Mean =	11.9	11.9	12.0	12.0	12.0	12.0	11.8	11.9	12.0	11.9	11.9	11.7
Std. Deviation =	1.4	1.3	1.3	1.3	1.3	1.3	1.4	1.3	1.3	1.3	1.3	1.3
Network Mean =	11.8	11.8	11.8	11.8	11.8	11.8	11.8	11.8	11.8	11.8	11.8	11.8
Natl. Mean =												
% Hgb >= 11.0	78%	77%	82%	82%	81%	81%	76%	79%	81%	79%	81%	77%
% Natl. >= 11 2004	80%	80%	80%	80%	80%	80%	80%	80%	80%	80%	80%	80%



	Jan	Feb	Mar	Apr	May	Jun	Jul	Aug	Sep	Oct	Nov	Dec
# Hct	996	994	987	997	1001	1017	1080	1063	1029	1020	1024	1013
# Hct >= 33.0	817	823	786	774	738	843	815	818	816	798	831	817
Pop. Mean =	37	36	36	36	36	36	36	36	36	36	36	36
Std. Deviation =	4.07	3.90	3.83	4.08	4.16	4.16	4.34	4.12	4.15	4.01	3.89	3.98
Network Mean =												
Natl. Mean =												
% Hct >= 33.0	82%	83%	80%	78%	74%	83%	75%	77%	79%	78%	81%	81%

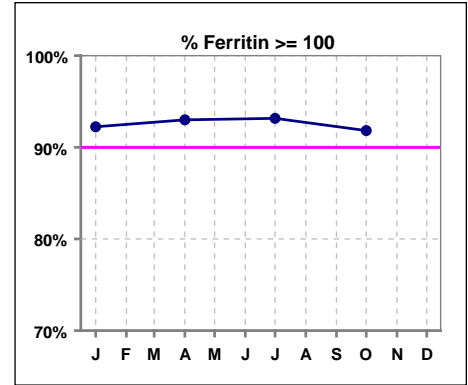


*Methodology: a) Monthly values based on patient's monthly average of all values present for the month; b) Quarter values are average of all values for quarter; c) Values not averaged use last value present at months end.

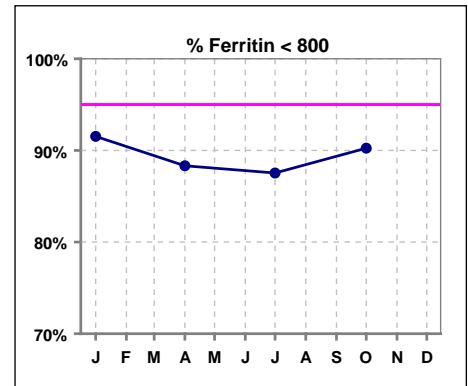
V. ANEMIA - CONT.

Iron Profile

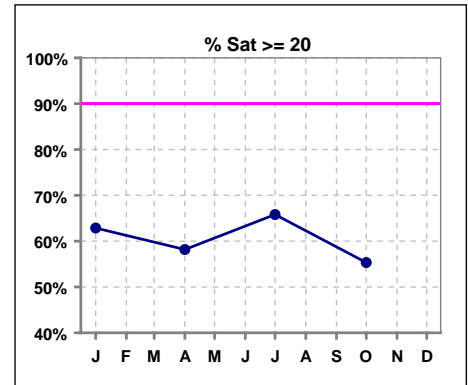
	Jan	Feb	Mar	Apr	May	Jun	Jul	Aug	Sep	Oct	Nov	Dec
# Ferritin	992			985			1067			1015		
# Ferritin >= 100	915			916			994			932		
Pop. Mean =	439			466			489			448		
Std. Deviation =	445			360			433			365		
Network Mean =												
Natl. Mean =												
% Ferritin >= 100	92%			93%			93%			92%		
%Natl. >=100 2004	94%			94%			94%			94%		



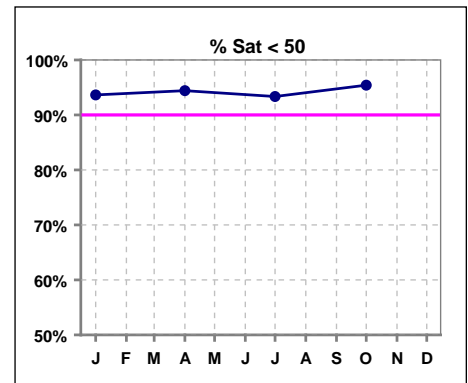
	Jan	Feb	Mar	Apr	May	Jun	Jul	Aug	Sep	Oct	Nov	Dec
# Ferritin	992			985			1067			1015		
# Ferritin < 800	908			870			934			916		
Pop. Mean =	439			466			489			448		
Std. Deviation =	445			360			433			365		
Network Mean =												
Natl. Mean =												
% Ferritin < 800	92%			88%			88%			90%		



	Jan	Feb	Mar	Apr	May	Jun	Jul	Aug	Sep	Oct	Nov	Dec
# % Sat	991			985			1053			1003		
# % Sat >= 20	623			573			693			555		
Pop. Mean =	26			24			27			23		
Std. Deviation =	15			14			15			13		
Network Mean =												
Natl. Mean =												
% Sat% >= 20	63%			58%			66%			55%		
%Natl. >=20 2004	81%			81%			81%			81%		



	Jan	Feb	Mar	Apr	May	Jun	Jul	Aug	Sep	Oct	Nov	Dec
# % Sat	991			985			1053			1003		
# % Sat < 50	928			930			983			957		
Pop. Mean =	26			24			27			23		
Std. Deviation =	15			14			15			13		
Network Mean =												
Natl. Mean =												
% Sat% < 50	94%			94%			93%			95%		



*Methodology: a) Monthly values based on patient's monthly average of all values present for the month; b) Quarter values are average of all values for quarter; c) Values not averaged use last value present at months end.