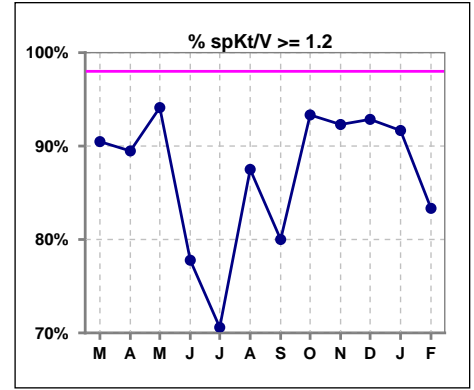
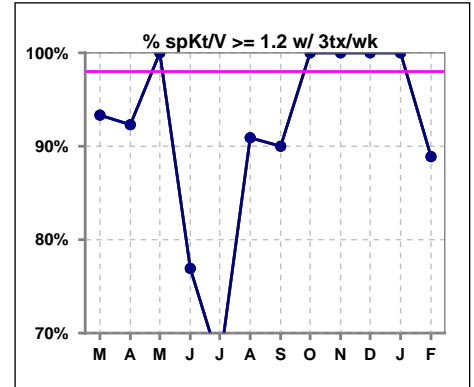


I. ADEQUACY OF DIALYSIS

	Mar	Apr	May	Jun	Jul	Aug	Sep	Oct	Nov	Dec	Jan	Feb
# spKt/V	21	19	17	18	17	16	15	15	13	14	12	12
# spKt/V >= 1.2	19	17	16	14	12	14	12	14	12	13	11	10
Pop. Mean	1.50	1.46	1.50	1.39	1.39	1.45	1.40	1.40	1.41	1.43	1.41	1.36
Std. Deviation	0.35	0.31	0.30	0.37	0.39	0.26	0.28	0.26	0.29	0.31	0.35	0.32
% spKt/V >= 1.2	90%	89%	94%	78%	71%	88%	80%	93%	92%	93%	92%	83%



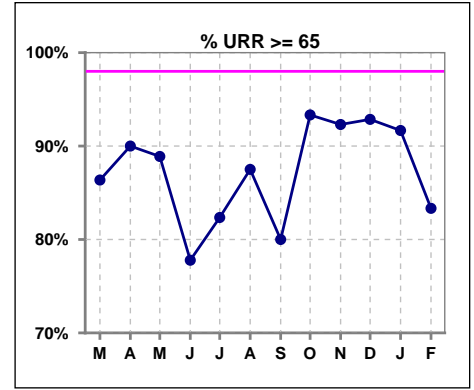
	Mar	Apr	May	Jun	Jul	Aug	Sep	Oct	Nov	Dec	Jan	Feb
# spKt/V w/ 3tx/wk	15	13	13	13	12	11	10	10	9	10	9	9
# spKt/V >= 1.2 w/3tx/wk	14	12	13	10	8	10	9	10	9	10	9	8
Pop. Mean	1.56	1.52	1.56	1.44	1.44	1.54	1.49	1.48	1.52	1.53	1.51	1.47
Std. Deviation	0.34	0.27	0.23	0.36	0.40	0.22	0.21	0.19	0.18	0.21	0.27	0.22
% >= 1.2 w/3tx/wk	93%	92%	100%	77%	67%	91%	90%	100%	100%	100%	100%	89%



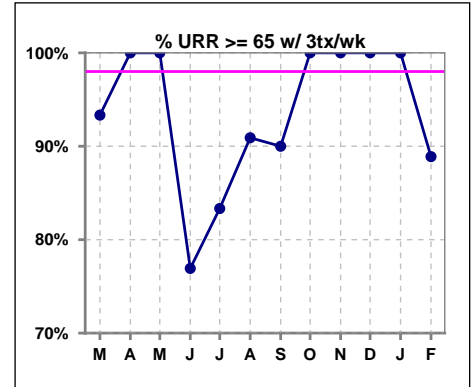
Methodology: a) All labs for 'Adequacy of Dialysis', 'Nutrition', 'Osteodystrophy', 'Anemia' and 'Diabetes' based on last value of month; b) BP's and #L processed are average of all values for month; c) Access data takes last access of month; d) Values for SGA and 'Infection Control' use most recent result.

I. ADEQUACY OF DIALYSIS - CONT.

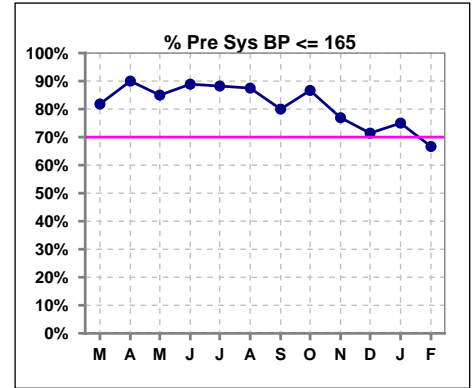
	Mar	Apr	May	Jun	Jul	Aug	Sep	Oct	Nov	Dec	Jan	Feb
# URR	22	20	18	18	17	16	15	15	13	14	12	12
# URR >= 65	19	18	16	14	14	14	12	14	12	13	11	10
Pop. Mean	72	71	72	69	71	72	71	70	71	71	71	69
Std. Deviation	8.74	8.38	8.59	10.18	9.76	6.54	7.70	7.66	8.54	9.13	9.43	9.34
% URR >= 65	86%	90%	89%	78%	82%	88%	80%	93%	92%	93%	92%	83%



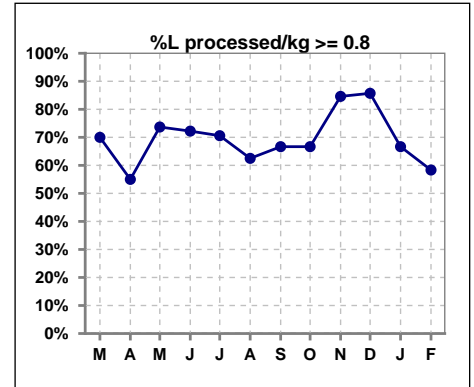
	Mar	Apr	May	Jun	Jul	Aug	Sep	Oct	Nov	Dec	Jan	Feb
# URR w/ 3tx/wk	15	13	13	13	12	11	10	10	9	10	9	9
# URR>=65 w/ 3tx/wk	14	13	13	10	10	10	9	10	9	10	9	8
Pop. Mean	74	74	74	71	72	74	73	73	74	74	73	72
Std. Deviation	6.73	4.73	5.05	8.97	8.88	5.41	4.95	4.47	3.55	4.11	4.71	4.98
% URR>=65 w/ 3tx/wk	93%	100%	100%	77%	83%	91%	90%	100%	100%	100%	100%	89%



	Mar	Apr	May	Jun	Jul	Aug	Sep	Oct	Nov	Dec	Jan	Feb
# Pre Sys BP	22	20	20	18	17	16	15	15	13	14	12	12
# Pre Sys BP <= 165	18	19	17	16	15	14	12	13	11	10	9	9
Pop. Mean	150	146	150	153	149	151	147	150	153	152	153	153
Std. Deviation	17.9	16.1	15.2	11.7	15.2	15.2	14.7	15.9	19.9	18.7	17.3	17.8
% Pre Sys BP <=165	82%	90%	85%	89%	88%	88%	80%	87%	77%	71%	75%	67%

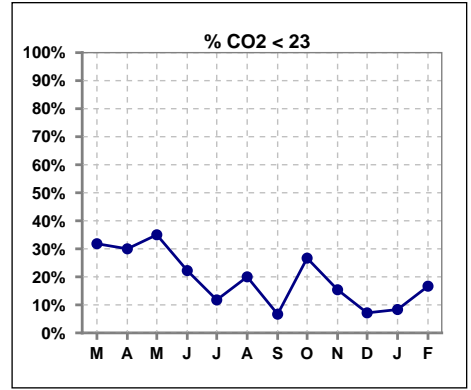


	Mar	Apr	May	Jun	Jul	Aug	Sep	Oct	Nov	Dec	Jan	Feb
# L processed/kg	20	20	19	18	17	16	15	15	13	14	12	12
# L processed/kg>=0.8	14	11	14	13	12	10	10	10	11	12	8	7
Pop. Mean	1	1	1	1	1	1	1	1	1	1	1	1
Std. Deviation	0.3	0.3	0.3	0.3	0.3	0.3	0.3	0.3	0.3	0.3	0.3	0.3
% L processed/kg>=0.8	70%	55%	74%	72%	71%	63%	67%	67%	85%	86%	67%	58%

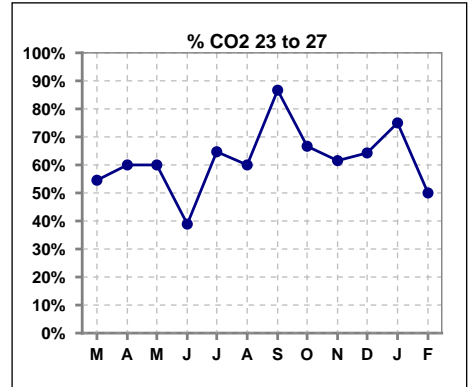


I. ADEQUACY OF DIALYSIS - CONT.

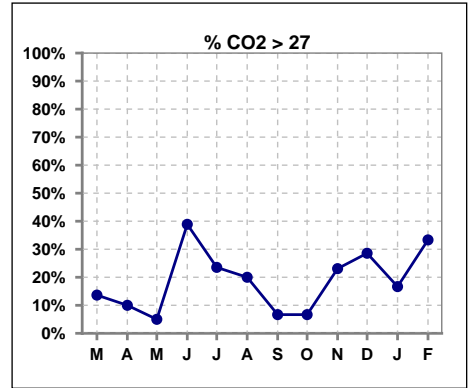
	Mar	Apr	May	Jun	Jul	Aug	Sep	Oct	Nov	Dec	Jan	Feb
# CO2	22	20	20	18	17	15	15	15	13	14	12	12
# CO2 < 23	7	6	7	4	2	3	1	4	2	1	1	2
Pop. Mean	24	24	24	26	25	24	25	24	25	27	26	26
Std. Deviation	2.89	2.55	2.85	3.58	2.78	3.85	1.95	2.65	3.48	3.25	2.94	3.57
% CO2 < 23	32%	30%	35%	22%	12%	20%	7%	27%	15%	7%	8%	17%



	Mar	Apr	May	Jun	Jul	Aug	Sep	Oct	Nov	Dec	Jan	Feb
# CO2	22	20	20	18	17	15	15	15	13	14	12	12
# CO2 23 to 27	12	12	12	7	11	9	13	10	8	9	9	6
Pop. Mean	24	24	24	26	25	24	25	24	25	27	26	26
Std. Deviation	2.89	2.55	2.85	3.58	2.78	3.85	1.95	2.65	3.48	3.25	2.94	3.57
% CO2 23 to 27	55%	60%	60%	39%	65%	60%	87%	67%	62%	64%	75%	50%



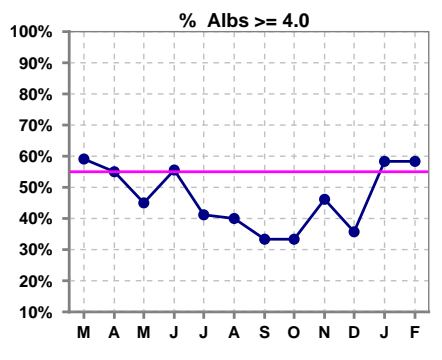
	Mar	Apr	May	Jun	Jul	Aug	Sep	Oct	Nov	Dec	Jan	Feb
# CO2	22	20	20	18	17	15	15	15	13	14	12	12
# CO2 > 27	3	2	1	7	4	3	1	1	3	4	2	4
Pop. Mean	24	24	24	26	25	24	25	24	25	27	26	26
Std. Deviation	2.89	2.55	2.85	3.58	2.78	3.85	1.95	2.65	3.48	3.25	2.94	3.57
% CO2 > 27	14%	10%	5%	39%	24%	20%	7%	7%	23%	29%	17%	33%



*Albumin values use BCG method - as of July 2001

II. NUTRITION

	Mar	Apr	May	Jun	Jul	Aug	Sep	Oct	Nov	Dec	Jan	Feb
# Albumin	22	20	20	18	17	15	15	15	13	14	12	12
# Albumin >= 4.0	13	11	9	10	7	6	5	5	6	5	7	7
Pop. Mean	3.9	3.9	3.9	4.0	3.9	3.8	3.8	3.8	3.8	3.8	4.0	4.0
Std. Deviation	0.49	0.48	0.35	0.38	0.45	0.45	0.40	0.33	0.39	0.42	0.55	0.49
% Alb >= 4.0	59%	55%	45%	56%	41%	40%	33%	33%	46%	36%	58%	58%

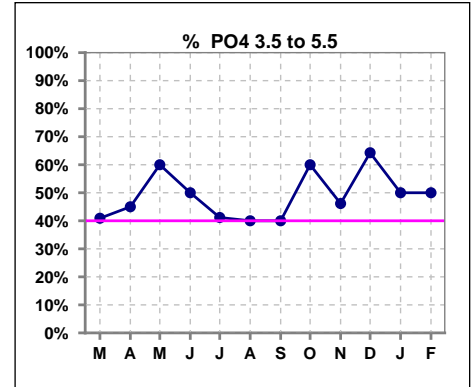


Methodology: a) All labs for 'Adequacy of Dialysis', 'Nutrition', 'Osteodystrophy', 'Anemia' and 'Diabetes' based on last value of month; b) BP's and #L processed are average of all values for month; c) Access data takes last access of month; d) Values for SGA and 'Infection Control' use most recent result.

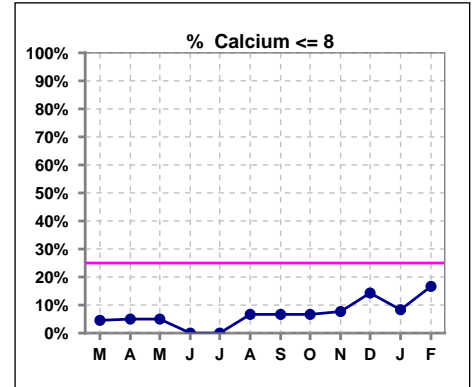
Lab methodology for PTH changed January 2012

III. OSTEODYSTROPHY

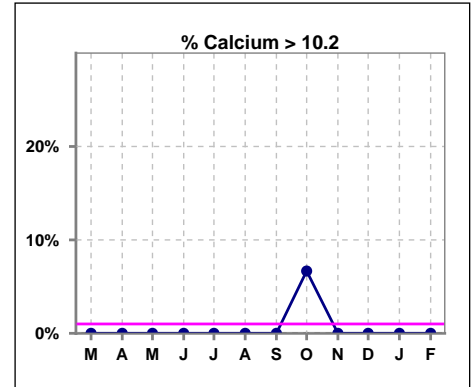
	Mar	Apr	May	Jun	Jul	Aug	Sep	Oct	Nov	Dec	Jan	Feb
# PO4	22	20	20	18	17	15	15	15	13	14	12	12
# PO4 3.5 to 5.5	9	9	12	9	7	6	6	9	6	9	6	6
Pop. Mean	6.0	5.7	5.7	5.7	6.1	6.0	5.9	5.8	6.0	5.1	5.9	6.1
Std. Deviation	1.93	1.63	1.78	1.71	1.68	1.58	1.65	1.80	2.05	1.55	1.48	2.29
% PO4 3.5 to 5.5	41%	45%	60%	50%	41%	40%	40%	60%	46%	64%	50%	50%



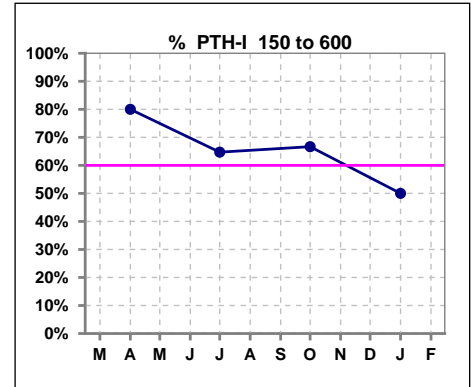
	Mar	Apr	May	Jun	Jul	Aug	Sep	Oct	Nov	Dec	Jan	Feb
# Calcium	22	20	20	18	17	15	15	15	13	14	12	12
# Calcium <= 8	1	1	1	0	0	1	1	1	1	2	1	2
Pop. Mean	9.2	9.1	9.0	8.9	8.9	8.7	9.0	8.9	9.0	8.9	8.9	8.6
Std. Deviation	0.71	0.55	0.53	0.50	0.51	0.67	0.60	0.71	0.59	0.80	0.55	1.12
% Calcium <= 8	5%	5%	5%	0%	0%	7%	7%	7%	8%	14%	8%	17%



	Mar	Apr	May	Jun	Jul	Aug	Sep	Oct	Nov	Dec	Jan	Feb
# Calcium	22	20	20	18	17	15	15	15	13	14	12	12
# Calcium > 10.2	0	0	0	0	0	0	0	1	0	0	0	0
Pop. Mean	9.2	9.1	9.0	8.9	8.9	8.7	9.0	8.9	9.0	8.9	8.9	8.6
Std. Deviation	0.71	0.55	0.53	0.50	0.51	0.67	0.60	0.71	0.59	0.80	0.55	1.12
% Calcium > 10.2	0%	0%	0%	0%	0%	0%	0%	7%	0%	0%	0%	0%



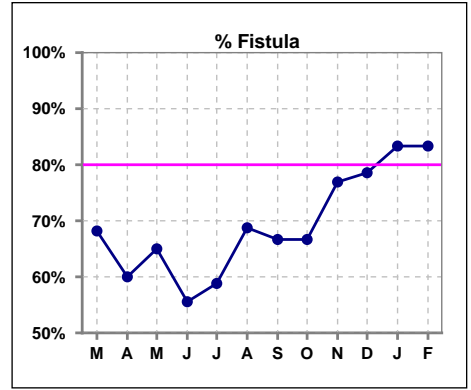
	Mar	Apr	May	Jun	Jul	Aug	Sep	Oct	Nov	Dec	Jan	Feb
# PTH-I		20			17			15			12	
# PTH-I 150 to 600		16			11			10			6	
Pop. Mean		585			704			725			460	
Std. Deviation		894			811			978			403	
% PTH-I 150 to 600		80%			65%			67%			50%	



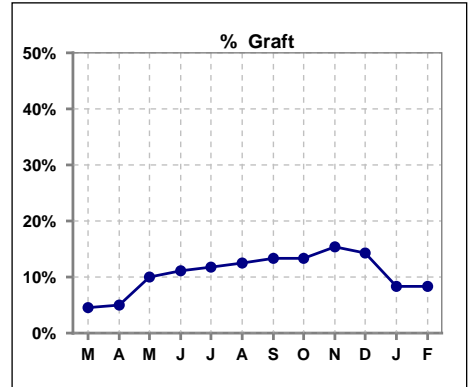
Methodology: a) All labs for 'Adequacy of Dialysis', 'Nutrition', 'Osteodystrophy', 'Anemia' and 'Diabetes' based on last value of month; b) BP's and #L processed are average of all values for month; c) Access data takes last access of month; d) Values for SGA and 'Infection Control' use most recent result.

IV. ACCESS

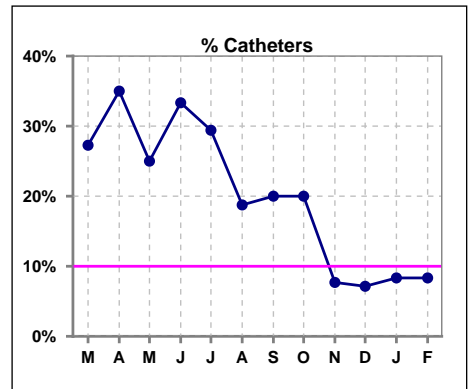
	Mar	Apr	May	Jun	Jul	Aug	Sep	Oct	Nov	Dec	Jan	Feb
# Access	22	20	20	18	17	16	15	15	13	14	12	12
# Fistula	15	12	13	10	10	11	10	10	10	11	10	10
% Fistula	68%	60%	65%	56%	59%	69%	67%	67%	77%	79%	83%	83%



	Mar	Apr	May	Jun	Jul	Aug	Sep	Oct	Nov	Dec	Jan	Feb
# Access	22	20	20	18	17	16	15	15	13	14	12	12
# Graft	1	1	2	2	2	2	2	2	2	2	1	1
% Graft	5%	5%	10%	11%	12%	13%	13%	13%	15%	14%	8%	8%



	Mar	Apr	May	Jun	Jul	Aug	Sep	Oct	Nov	Dec	Jan	Feb
# Access	22	20	20	18	17	16	15	15	13	14	12	12
# Catheters	6	7	5	6	5	3	3	3	1	1	1	1
% Catheters	27%	35%	25%	33%	29%	19%	20%	20%	8%	7%	8%	8%



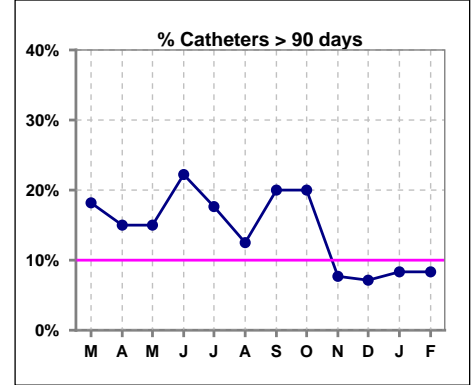
Methodology: a) All labs for 'Adequacy of Dialysis', 'Nutrition', 'Osteodystrophy', 'Anemia' and 'Diabetes' based on last value of month; b) BP's and #L processed are average of all values for month; c) Access data takes last access of month; d) Values for SGA and 'Infection Control' use most recent result.

IV. ACCESS - CONT.

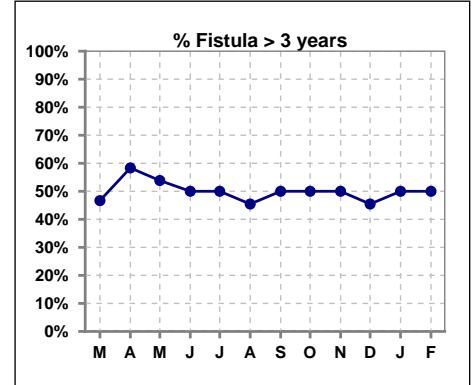
Catheters > 90 days

	Mar	Apr	May	Jun	Jul	Aug	Sep	Oct	Nov	Dec	Jan	Feb
# Access	22	20	20	18	17	16	15	15	13	14	12	12
# Catheters	4	3	3	4	3	2	3	3	1	1	1	1
% Catheters	18%	15%	15%	22%	18%	13%	20%	20%	8%	7%	8%	8%

Definition: Catheter in use on last treatment of the month



	Mar	Apr	May	Jun	Jul	Aug	Sep	Oct	Nov	Dec	Jan	Feb
# Fistula	15	12	13	10	10	11	10	10	10	11	10	10
# Fistula > 3 yrs	7	7	7	5	5	5	5	5	5	5	5	5
% Fistula > 3 yrs	47%	58%	54%	50%	50%	45%	50%	50%	50%	45%	50%	50%

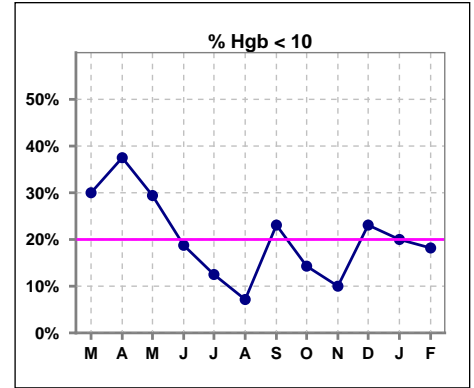


Methodology: a) All labs for 'Adequacy of Dialysis', 'Nutrition', 'Osteodystrophy', 'Anemia' and 'Diabetes' based on last value of month; b) BP's and #L processed are average of all values for month; c) Access data takes last access of month; d) Values for SGA and 'Infection Control' use most recent result.

V. ANEMIA

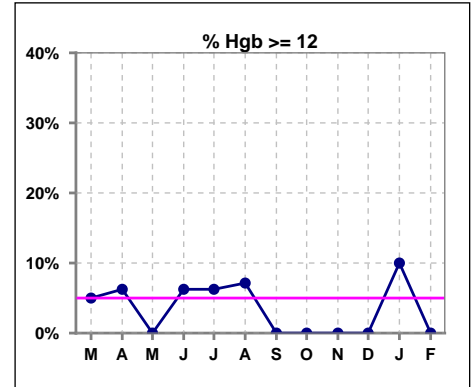
	Mar	Apr	May	Jun	Jul	Aug	Sep	Oct	Nov	Dec	Jan	Feb
# Hgb	20	16	17	16	16	14	13	14	10	13	10	11
# Hgb < 10	6	6	5	3	2	1	3	2	1	3	2	2
Pop. Mean	10.4	10.5	10.2	10.8	10.8	11.0	10.4	10.6	10.7	10.7	10.7	10.5
Std. Deviation	1.4	1.2	1.6	1.2	1.0	1.3	1.1	1.0	0.9	1.1	1.2	1.2
% Hgb < 10	30%	38%	29%	19%	13%	7%	23%	14%	10%	23%	20%	18%

Note: Excludes patients who received no ESA in month.



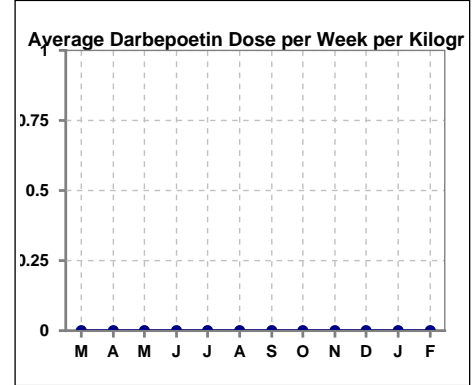
	Mar	Apr	May	Jun	Jul	Aug	Sep	Oct	Nov	Dec	Jan	Feb
# Hgb	20	16	17	16	16	14	13	14	10	13	10	11
# Hgb >= 12	1	1	0	1	1	1	0	0	0	0	1	0
Pop. Mean	10.4	10.5	10.2	10.8	10.8	11.0	10.4	10.6	10.7	10.7	10.7	10.5
Std. Deviation	1.4	1.2	1.6	1.2	1.0	1.3	1.1	1.0	0.9	1.1	1.2	1.2
% Hgb >= 12	5%	6%	0%	6%	6%	7%	0%	0%	0%	0%	10%	0%

Note: Excludes patients who received no ESA in month.



Average Darbepoetin Dose per Week per Kilogram

	Mar	Apr	May	Jun	Jul	Aug	Sep	Oct	Nov	Dec	Jan	Feb
# Average Darbepoetin	0	0	0	0	0	0	0	0	0	0	0	0

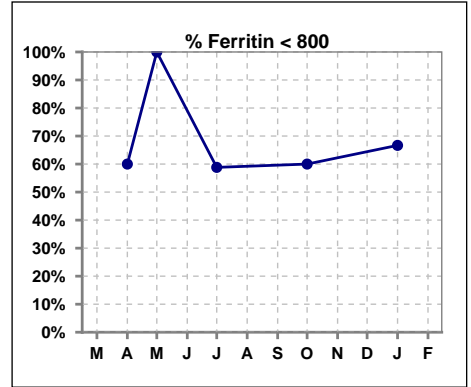


Methodology: a) All labs for 'Adequacy of Dialysis', 'Nutrition', 'Osteodystrophy', 'Anemia' and 'Diabetes' based on last value of month; b) BP's and #L processed are average of all values for month; c) Access data takes last access of month; d) Values for SGA and 'Infection Control' use most recent result.

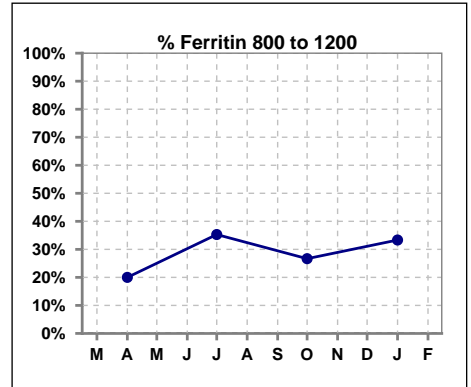
V. ANEMIA - CONT.

Iron Profile

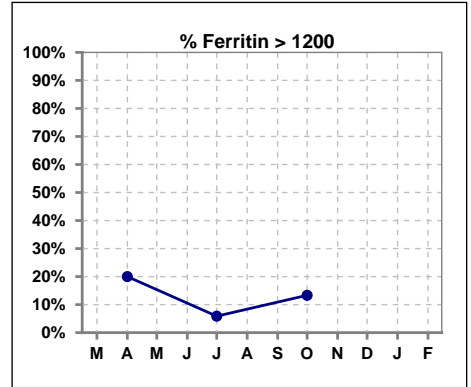
	Mar	Apr	May	Jun	Jul	Aug	Sep	Oct	Nov	Dec	Jan	Feb
# Ferritin		20	1		17			15			12	
# Ferritin < 800		12	1		10			9			8	
Pop. Mean		744	45		638			668			552	
Std. Deviation		419	0		426			470			369	
% Ferritin < 800		60%	100%		59%			60%			67%	



	Mar	Apr	May	Jun	Jul	Aug	Sep	Oct	Nov	Dec	Jan	Feb
# Ferritin		20	1		17			15			12	
# Ferritin 800 to 1200		4			6			4			4	
Pop. Mean		744	45		638			668			552	
Std. Deviation		419	0		426			470			369	
% Ferritin 800 to 1200		20%			35%			27%			33%	



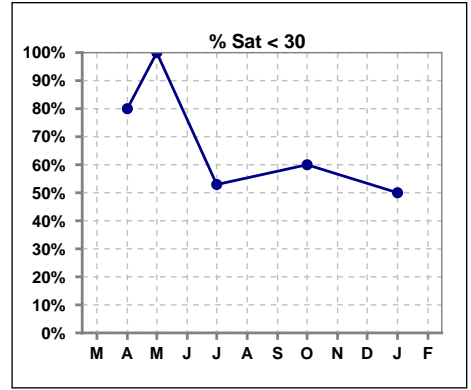
	Mar	Apr	May	Jun	Jul	Aug	Sep	Oct	Nov	Dec	Jan	Feb
# Ferritin		20	1		17			15			12	
# Ferritin > 1200		4			1			2				
Pop. Mean		744	45		638			668			552	
Std. Deviation		419	0		426			470			369	
% Ferritin > 1200		20%			6%			13%				



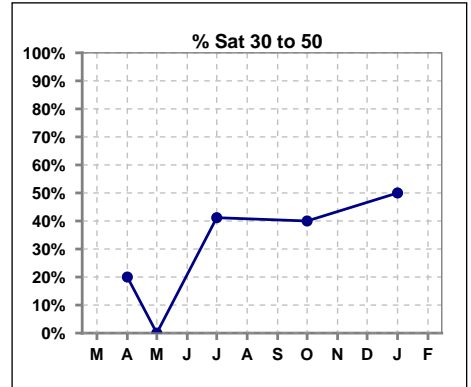
Methodology: a) All labs for 'Adequacy of Dialysis', 'Nutrition', 'Osteodystrophy', 'Anemia' and 'Diabetes' based on last value of month; b) BP's and #L processed are average of all values for month; c) Access data takes last access of month; d) Values for SGA and 'Infection Control' use most recent result.

V. ANEMIA - CONT.

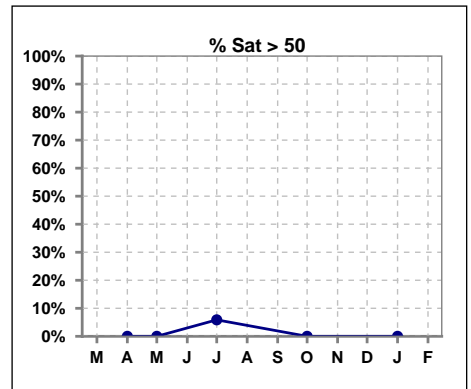
	Mar	Apr	May	Jun	Jul	Aug	Sep	Oct	Nov	Dec	Jan	Feb
# % Sat		20	1		17			15			12	
# % Sat < 30		16	1		9			9			6	
Pop. Mean		22	15		29			29			27	
Std. Deviation		10	0		11			10			9	
% % Sat < 30		80%	100%		53%			60%			50%	



	Mar	Apr	May	Jun	Jul	Aug	Sep	Oct	Nov	Dec	Jan	Feb
# % Sat		20	1		17			15			12	
# % Sat 30 to 50		4	0		7			6			6	
Pop. Mean		22	15		29			29			27	
Std. Deviation		10	0		11			10			9	
% % Sat 30 to 50		20%	0%		41%			40%			50%	



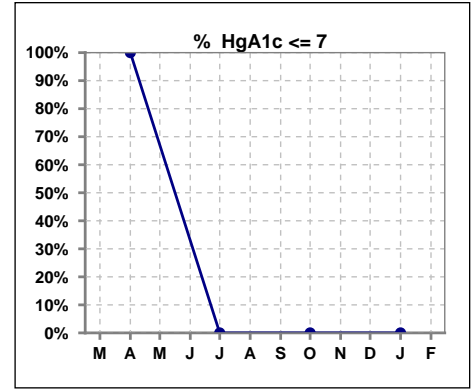
	Mar	Apr	May	Jun	Jul	Aug	Sep	Oct	Nov	Dec	Jan	Feb
# % Sat		20	1		17			15			12	
# % Sat > 50		0	0		1			0			0	
Pop. Mean		22	15		29			29			27	
Std. Deviation		10	0		11			10			9	
% % Sat > 50		0%	0%		6%			0%			0%	



Methodology: a) All labs for 'Adequacy of Dialysis', 'Nutrition', 'Osteodystrophy', 'Anemia' and 'Diabetes' based on last value of month; b) BP's and #L processed are average of all values for month; c) Access data takes last access of month; d) Values for SGA and 'Infection Control' use most recent result.

VI. Diabetes

	Mar	Apr	May	Jun	Jul	Aug	Sep	Oct	Nov	Dec	Jan	Feb
# HgA1c		9			0			0			0	
# HgA1c <= 7		9			0			0			0	
Pop. Mean		5.4			0			0			0	
Std. Deviation		0.88			0			0			0	
% HgA1c <= 7		100%			0%			0%			0%	

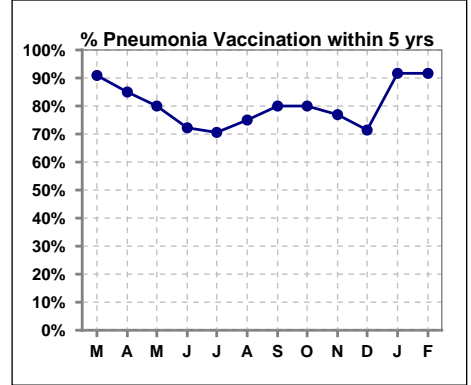


Methodology: a) All labs for 'Adequacy of Dialysis', 'Nutrition', 'Osteodystrophy', 'Anemia' and 'Diabetes' based on last value of month; b) BP's and #L processed are average of all values for month; c) Access data takes last access of month; d) Values for SGA and 'Infection Control' use most recent result.

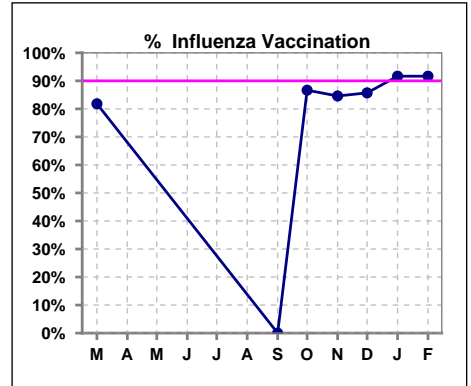
VII. Infection Control

Pneumonia vaccination within the past five years

	Mar	Apr	May	Jun	Jul	Aug	Sep	Oct	Nov	Dec	Jan	Feb
# Patient	22	20	20	18	17	16	15	15	13	14	12	12
# Pneumonia	20	17	16	13	12	12	12	12	10	10	11	11
% Pneumonia	91%	85%	80%	72%	71%	75%	80%	80%	77%	71%	92%	92%



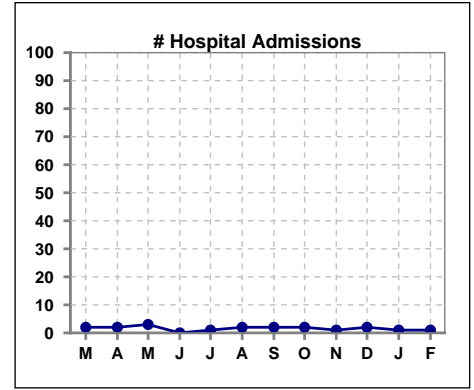
	Mar	Apr	May	Jun	Jul	Aug	Sep	Oct	Nov	Dec	Jan	Feb
# Patient	22						15	15	13	14	12	12
# Influenza	18						0	13	11	12	11	11
% Influenza	82%						0%	87%	85%	86%	92%	92%



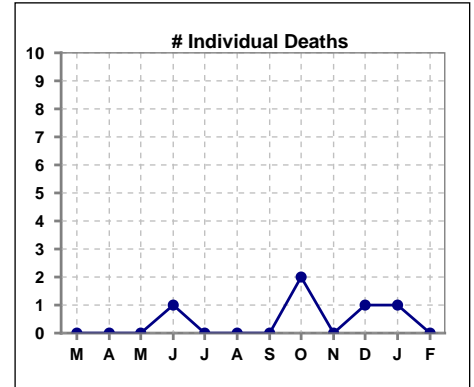
Methodology: a) All labs for 'Adequacy of Dialysis', 'Nutrition', 'Osteodystrophy', 'Anemia' and 'Diabetes' based on last value of month; b) BP's and #L processed are average of all values for month; c) Access data takes last access of month; d) Values for SGA and 'Infection Control' use most recent result.

VIII. Outcome measures

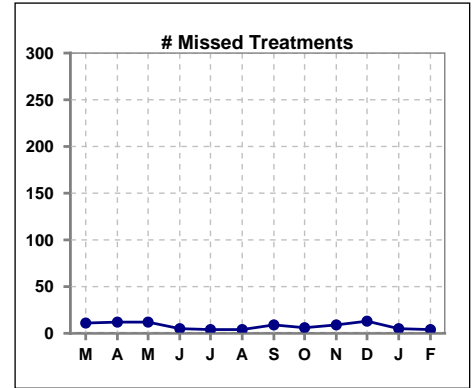
	Mar	Apr	May	Jun	Jul	Aug	Sep	Oct	Nov	Dec	Jan	Feb
# Patient	22	20	20	18	17	16	15	15	13	14	12	12
# Hospital Admissions	2	2	3	0	1	2	2	2	1	2	1	1



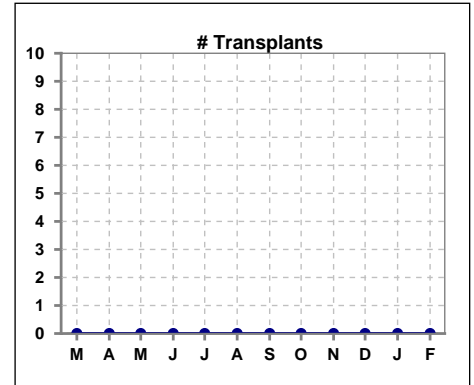
	Mar	Apr	May	Jun	Jul	Aug	Sep	Oct	Nov	Dec	Jan	Feb
# Patient	22	20	20	18	17	16	15	15	13	14	12	12
# Individual Deaths	0	0	0	1	0	0	0	2	0	1	1	0



	Mar	Apr	May	Jun	Jul	Aug	Sep	Oct	Nov	Dec	Jan	Feb
# Patient	22	20	20	18	17	16	15	15	13	14	12	12
# Missed Treatments	11	12	12	5	4	4	9	6	9	13	5	4



	Mar	Apr	May	Jun	Jul	Aug	Sep	Oct	Nov	Dec	Jan	Feb
# Patient	22	20	20	18	17	16	15	15	13	14	12	12
# Transplants	0	0	0	0	0	0	0	0	0	0	0	0



Methodology: a) All labs for 'Adequacy of Dialysis', 'Nutrition', 'Osteodystrophy', 'Anemia' and 'Diabetes' based on last value of month; b) BP's and #L processed are average of all values for month; c) Access data takes last access of month; d) Values for SGA and 'Infection Control' use most recent result.