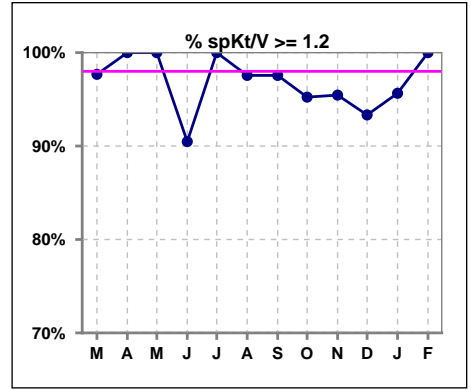
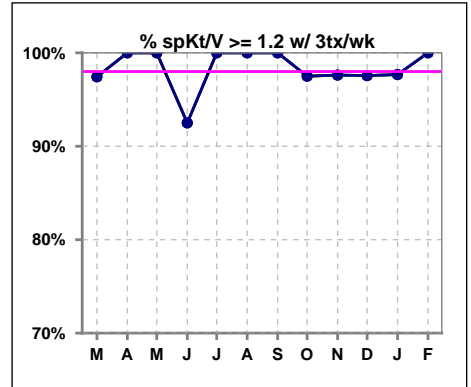


**I. ADEQUACY OF DIALYSIS**

	Mar	Apr	May	Jun	Jul	Aug	Sep	Oct	Nov	Dec	Jan	Feb
# spKt/V	43	44	44	42	41	41	41	42	44	45	46	42
# spKt/V >= 1.2	42	44	44	38	41	40	40	40	42	42	44	42
Pop. Mean	1.58	1.59	1.58	1.55	1.56	1.54	1.48	1.48	1.45	1.47	1.50	1.50
Std. Deviation	0.28	0.27	0.24	0.35	0.23	0.29	0.20	0.25	0.23	0.25	0.26	0.22
% spKt/V >= 1.2	98%	100%	100%	90%	100%	98%	98%	95%	95%	93%	96%	100%



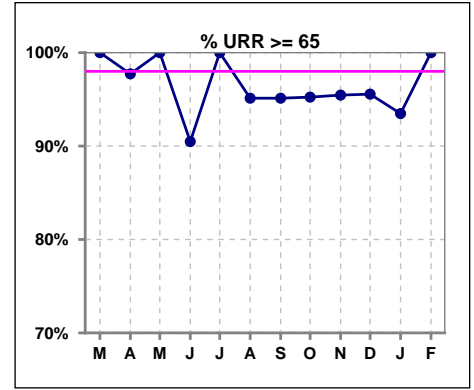
	Mar	Apr	May	Jun	Jul	Aug	Sep	Oct	Nov	Dec	Jan	Feb
# spKt/V w/ 3tx/wk	39	41	41	40	40	38	39	40	42	41	43	40
# spKt/V >= 1.2 w/3tx/wk	38	41	41	37	40	38	39	39	41	40	42	40
Pop. Mean	1.59	1.59	1.58	1.57	1.56	1.55	1.49	1.51	1.47	1.49	1.51	1.50
Std. Deviation	0.28	0.27	0.24	0.35	0.24	0.29	0.19	0.23	0.21	0.22	0.26	0.22
% >= 1.2 w/3tx/wk	97%	100%	100%	93%	100%	100%	100%	98%	98%	98%	98%	100%



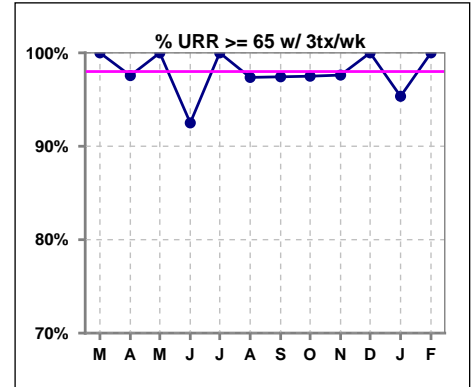
Methodology: a) All labs for 'Adequacy of Dialysis', 'Nutrition', 'Osteodystrophy', 'Anemia' and 'Diabetes' based on last value of month; b) BP's and #L processed are average of all values for month; c) Access data takes last access of month; d) Values for SGA and 'Infection Control' use most recent result.

**I. ADEQUACY OF DIALYSIS - CONT.**

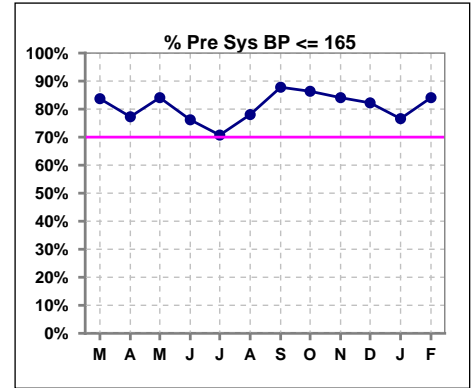
	Mar	Apr	May	Jun	Jul	Aug	Sep	Oct	Nov	Dec	Jan	Feb
# URR	43	44	44	42	41	41	41	42	44	45	46	42
# URR >= 65	43	43	44	38	41	39	39	40	42	43	43	42
Pop. Mean	74	74	74	73	74	73	72	72	72	72	73	73
Std. Deviation	5.33	5.37	4.86	6.78	4.75	5.72	4.66	6.48	5.75	5.67	5.36	4.78
% URR >= 65	100%	98%	100%	90%	100%	95%	95%	95%	95%	96%	93%	100%



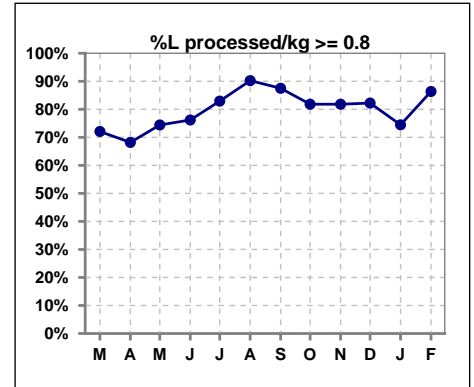
	Mar	Apr	May	Jun	Jul	Aug	Sep	Oct	Nov	Dec	Jan	Feb
# URR w/ 3tx/wk	39	41	41	40	40	38	39	40	42	41	43	40
# URR>=65 w/ 3tx/wk	39	40	41	37	40	37	38	39	41	41	41	40
Pop. Mean	74	74	74	74	74	74	73	73	72	73	73	73
Std. Deviation	5.49	5.36	4.82	6.74	4.81	5.38	4.40	5.44	4.71	4.87	5.05	4.76
% URR>=65 w/ 3tx/wk	100%	98%	100%	93%	100%	97%	97%	98%	98%	100%	95%	100%



	Mar	Apr	May	Jun	Jul	Aug	Sep	Oct	Nov	Dec	Jan	Feb
# Pre Sys BP	43	44	44	42	41	41	41	44	44	45	47	44
# Pre Sys BP <= 165	36	35	37	34	29	32	36	38	37	37	36	37
Pop. Mean	148	147	148	149	150	146	147	146	145	148	148	147
Std. Deviation	20.5	21.0	20.4	23.3	22.4	21.6	20.8	19.8	20.8	22.4	22.8	23.2
% Pre Sys BP <=165	84%	77%	84%	76%	71%	78%	88%	86%	84%	82%	77%	84%



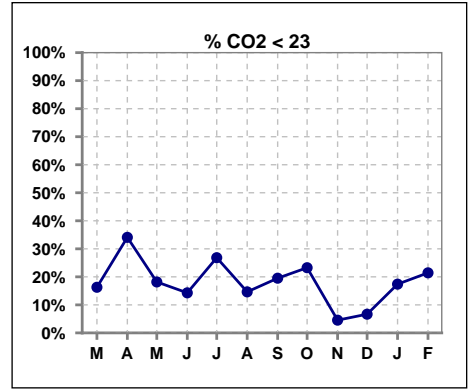
	Mar	Apr	May	Jun	Jul	Aug	Sep	Oct	Nov	Dec	Jan	Feb
# L processed/kg	43	44	43	42	41	41	40	44	44	45	47	44
# L processed/kg>=0.8	31	30	32	32	34	37	35	36	36	37	35	38
Pop. Mean	1	1	1	1	1	1	1	1	1	1	1	1
Std. Deviation	0.3	0.3	0.2	0.3	0.3	0.2	0.2	0.3	0.2	0.3	0.3	0.2
% L processed/kg>=0.8	72%	68%	74%	76%	83%	90%	88%	82%	82%	82%	74%	86%



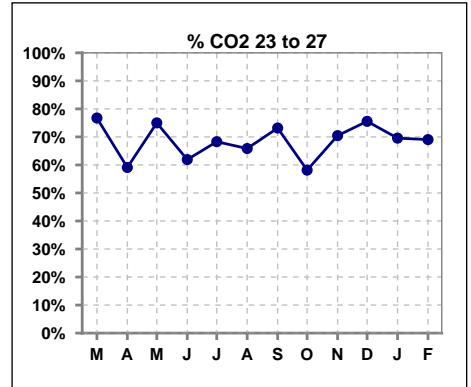
Methodology: a) All labs for 'Adequacy of Dialysis', 'Nutrition', 'Osteodystrophy', 'Anemia' and 'Diabetes' based on last value of month; b) BP's and #L processed are average of all values for month; c) Access data takes last access of month; d) Values for SGA and 'Infection Control' use most recent result.

**I. ADEQUACY OF DIALYSIS - CONT.**

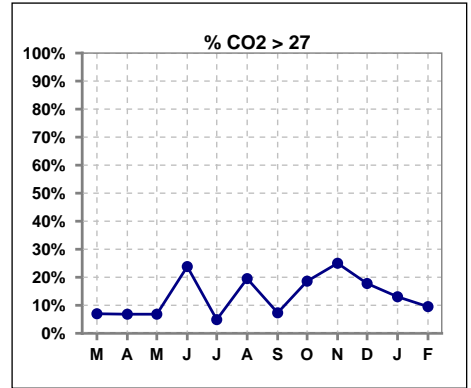
	Mar	Apr	May	Jun	Jul	Aug	Sep	Oct	Nov	Dec	Jan	Feb
# CO2	43	44	44	42	41	41	41	43	44	45	46	42
# CO2 < 23	7	15	8	6	11	6	8	10	2	3	8	9
Pop. Mean	24	24	25	25	24	25	24	25	26	26	25	24
Std. Deviation	2.67	2.83	2.49	2.78	2.49	2.68	3.26	3.24	2.40	2.23	2.60	2.80
% CO2 < 23	16%	34%	18%	14%	27%	15%	20%	23%	5%	7%	17%	21%



	Mar	Apr	May	Jun	Jul	Aug	Sep	Oct	Nov	Dec	Jan	Feb
# CO2	43	44	44	42	41	41	41	43	44	45	46	42
# CO2 23 to 27	33	26	33	26	28	27	30	25	31	34	32	29
Pop. Mean	24	24	25	25	24	25	24	25	26	26	25	24
Std. Deviation	2.67	2.83	2.49	2.78	2.49	2.68	3.26	3.24	2.40	2.23	2.60	2.80
% CO2 23 to 27	77%	59%	75%	62%	68%	66%	73%	58%	70%	76%	70%	69%



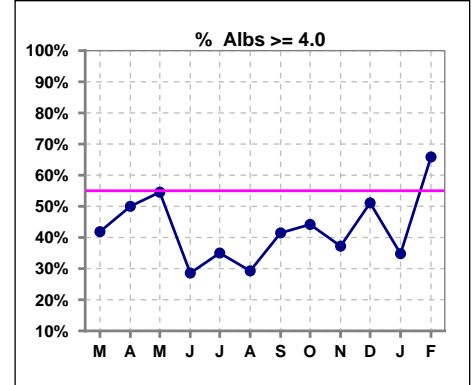
	Mar	Apr	May	Jun	Jul	Aug	Sep	Oct	Nov	Dec	Jan	Feb
# CO2	43	44	44	42	41	41	41	43	44	45	46	42
# CO2 > 27	3	3	3	10	2	8	3	8	11	8	6	4
Pop. Mean	24	24	25	25	24	25	24	25	26	26	25	24
Std. Deviation	2.67	2.83	2.49	2.78	2.49	2.68	3.26	3.24	2.40	2.23	2.60	2.80
% CO2 > 27	7%	7%	7%	24%	5%	20%	7%	19%	25%	18%	13%	10%



\*Albumin values use BCG method - as of July 2001

**II. NUTRITION**

	Mar	Apr	May	Jun	Jul	Aug	Sep	Oct	Nov	Dec	Jan	Feb
# Albumin	43	44	44	42	40	41	41	43	43	45	46	41
# Albumin >= 4.0	18	22	24	12	14	12	17	19	16	23	16	27
Pop. Mean	3.7	3.8	3.9	3.7	3.8	3.7	3.8	3.8	3.8	3.9	3.8	4.0
Std. Deviation	0.59	0.50	0.45	0.45	0.31	0.45	0.48	0.51	0.32	0.51	0.48	0.36
% Alb >= 4.0	42%	50%	55%	29%	35%	29%	41%	44%	37%	51%	35%	66%

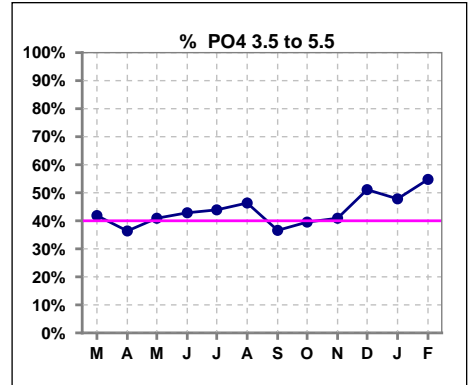


Methodology: a) All labs for 'Adequacy of Dialysis', 'Nutrition', 'Osteodystrophy', 'Anemia' and 'Diabetes' based on last value of month; b) BP's and #L processed are average of all values for month; c) Access data takes last access of month; d) Values for SGA and 'Infection Control' use most recent result.

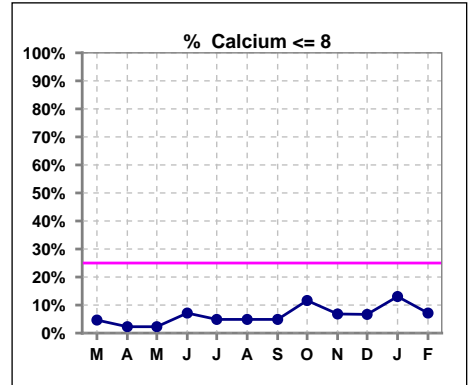
Lab methodology for PTH changed January 2012

**III. OSTEODYSTROPHY**

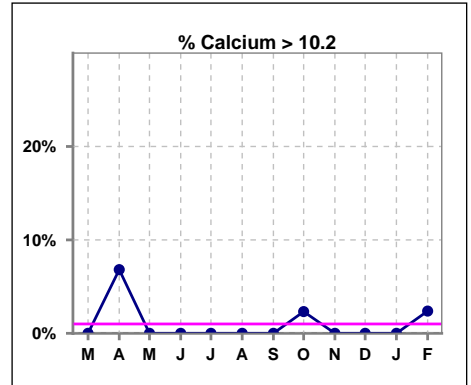
	Mar	Apr	May	Jun	Jul	Aug	Sep	Oct	Nov	Dec	Jan	Feb
# PO4	43	44	44	42	41	41	41	43	44	45	46	42
# PO4 3.5 to 5.5	18	16	18	18	18	19	15	17	18	23	22	23
Pop. Mean	5.9	5.9	6.1	6.0	6.1	6.0	6.2	6.0	6.1	6.0	5.9	6.1
Std. Deviation	1.70	1.83	2.15	1.56	1.74	1.68	1.94	2.12	1.90	1.80	1.57	1.84
% PO4 3.5 to 5.5	42%	36%	41%	43%	44%	46%	37%	40%	41%	51%	48%	55%



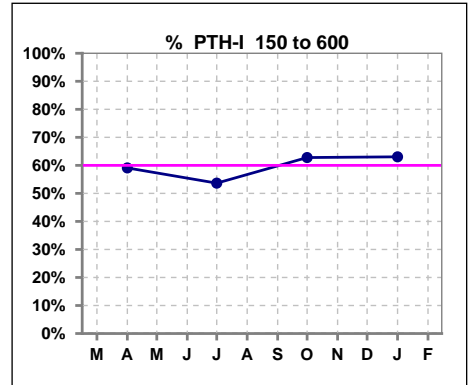
	Mar	Apr	May	Jun	Jul	Aug	Sep	Oct	Nov	Dec	Jan	Feb
# Calcium	43	44	44	42	41	41	41	43	44	45	46	42
# Calcium <= 8	2	1	1	3	2	2	2	5	3	3	6	3
Pop. Mean	9.0	9.1	9.2	9.0	9.0	8.9	8.9	8.9	9.1	9.0	8.8	9.1
Std. Deviation	0.66	0.73	0.58	0.75	0.69	0.70	0.69	0.80	0.63	0.69	0.68	0.79
% Calcium <= 8	5%	2%	2%	7%	5%	5%	5%	12%	7%	7%	13%	7%



	Mar	Apr	May	Jun	Jul	Aug	Sep	Oct	Nov	Dec	Jan	Feb
# Calcium	43	44	44	42	41	41	41	43	44	45	46	42
# Calcium > 10.2	0	3	0	0	0	0	0	1	0	0	0	1
Pop. Mean	9.0	9.1	9.2	9.0	9.0	8.9	8.9	8.9	9.1	9.0	8.8	9.1
Std. Deviation	0.66	0.73	0.58	0.75	0.69	0.70	0.69	0.80	0.63	0.69	0.68	0.79
% Calcium > 10.2	0%	7%	0%	0%	0%	0%	0%	2%	0%	0%	0%	2%



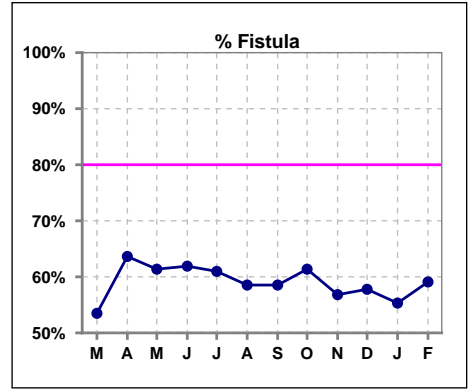
	Mar	Apr	May	Jun	Jul	Aug	Sep	Oct	Nov	Dec	Jan	Feb
# PTH-I		44			41			43			46	
# PTH-I 150 to 600		26			22			27			29	
Pop. Mean		482			612			498			512	
Std. Deviation		467			521			375			602	
% PTH-I 150 to 600		59%			54%			63%			63%	



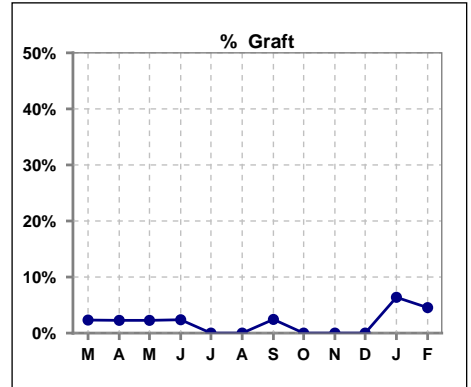
Methodology: a) All labs for 'Adequacy of Dialysis', 'Nutrition', 'Osteodystrophy', 'Anemia' and 'Diabetes' based on last value of month; b) BP's and #L processed are average of all values for month; c) Access data takes last access of month; d) Values for SGA and 'Infection Control' use most recent result.

**IV. ACCESS**

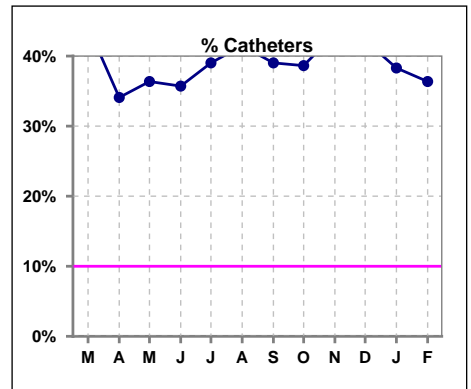
	Mar	Apr	May	Jun	Jul	Aug	Sep	Oct	Nov	Dec	Jan	Feb
<b># Access</b>	43	44	44	42	41	41	41	44	44	45	47	44
<b># Fistula</b>	23	28	27	26	25	24	24	27	25	26	26	26
<b>% Fistula</b>	53%	64%	61%	62%	61%	59%	59%	61%	57%	58%	55%	59%



	Mar	Apr	May	Jun	Jul	Aug	Sep	Oct	Nov	Dec	Jan	Feb
<b># Access</b>	43	44	44	42	41	41	41	44	44	45	47	44
<b># Graft</b>	1	1	1	1	0	0	1	0	0	0	3	2
<b>% Graft</b>	2%	2%	2%	2%	0%	0%	2%	0%	0%	0%	6%	5%



	Mar	Apr	May	Jun	Jul	Aug	Sep	Oct	Nov	Dec	Jan	Feb
<b># Access</b>	43	44	44	42	41	41	41	44	44	45	47	44
<b># Catheters</b>	19	15	16	15	16	17	16	17	19	19	18	16
<b>% Catheters</b>	44%	34%	36%	36%	39%	41%	39%	39%	43%	42%	38%	36%



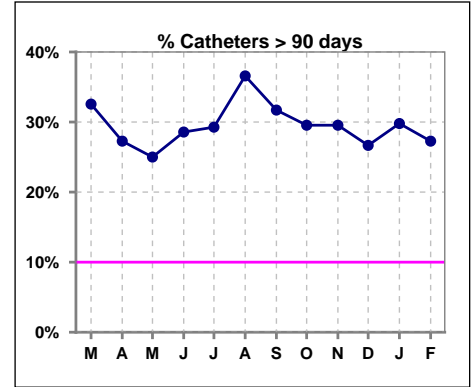
Methodology: a) All labs for 'Adequacy of Dialysis', 'Nutrition', 'Osteodystrophy', 'Anemia' and 'Diabetes' based on last value of month; b) BP's and #L processed are average of all values for month; c) Access data takes last access of month; d) Values for SGA and 'Infection Control' use most recent result.

**IV. ACCESS - CONT.**

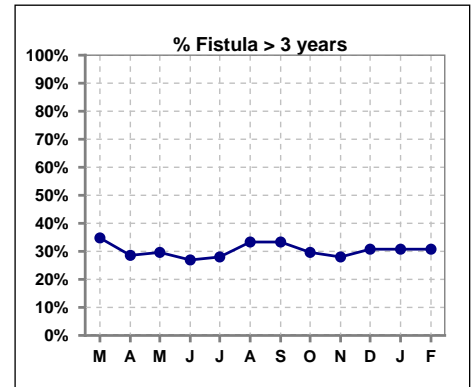
**Catheters > 90 days**

	Mar	Apr	May	Jun	Jul	Aug	Sep	Oct	Nov	Dec	Jan	Feb
<b># Access</b>	43	44	44	42	41	41	41	44	44	45	47	44
<b># Catheters</b>	14	12	11	12	12	15	13	13	13	12	14	12
<b>% Catheters</b>	33%	27%	25%	29%	29%	37%	32%	30%	30%	27%	30%	27%

Definition: Catheter in use on last treatment of the month



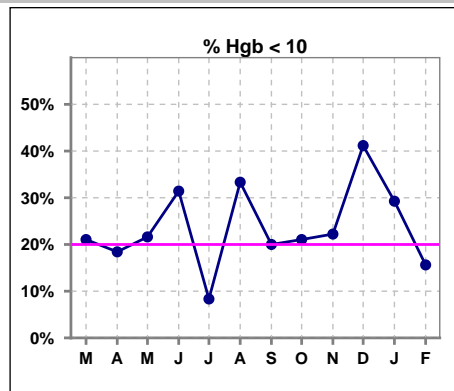
	Mar	Apr	May	Jun	Jul	Aug	Sep	Oct	Nov	Dec	Jan	Feb
<b># Fistula</b>	23	28	27	26	25	24	24	27	25	26	26	26
<b># Fistula &gt; 3 yrs</b>	8	8	8	7	7	8	8	8	7	8	8	8
<b>% Fistula &gt; 3 yrs</b>	35%	29%	30%	27%	28%	33%	33%	30%	28%	31%	31%	31%



**V. ANEMIA**

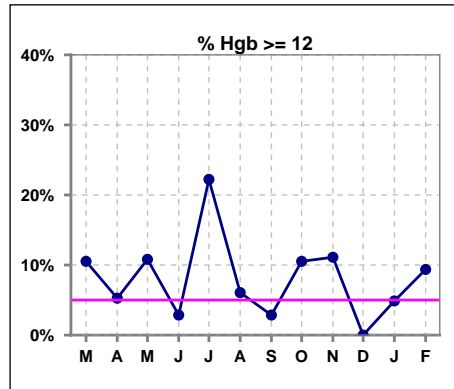
	Mar	Apr	May	Jun	Jul	Aug	Sep	Oct	Nov	Dec	Jan	Feb
# Hgb	38	38	37	35	36	33	35	38	36	34	41	32
# Hgb < 10	8	7	8	11	3	11	7	8	8	14	12	5
Pop. Mean	10.5	10.5	10.9	10.2	11.0	10.4	10.5	10.6	10.6	10.1	10.4	10.7
Std. Deviation	1.2	1.2	1.4	1.3	1.1	1.1	1.0	1.3	1.5	1.3	1.2	1.2
% Hgb < 10	21%	18%	22%	31%	8%	33%	20%	21%	22%	41%	29%	16%

Note: Excludes patients who received no ESA in month.



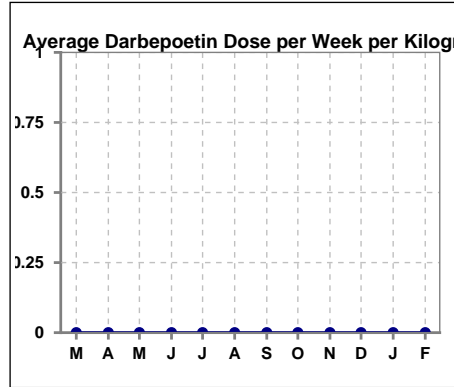
	Mar	Apr	May	Jun	Jul	Aug	Sep	Oct	Nov	Dec	Jan	Feb
# Hgb	38	38	37	35	36	33	35	38	36	34	41	32
# Hgb >= 12	4	2	4	1	8	2	1	4	4	0	2	3
Pop. Mean	10.5	10.5	10.9	10.2	11.0	10.4	10.5	10.6	10.6	10.1	10.4	10.7
Std. Deviation	1.2	1.2	1.4	1.3	1.1	1.1	1.0	1.3	1.5	1.3	1.2	1.2
% Hgb >= 12	11%	5%	11%	3%	22%	6%	3%	11%	11%	0%	5%	9%

Note: Excludes patients who received no ESA in month.



**Average Darbepoetin Dose per Week per Kilogram**

	Mar	Apr	May	Jun	Jul	Aug	Sep	Oct	Nov	Dec	Jan	Feb
# Average Darbepoetin	0	0	0	0	0	0	0	0	0	0	0	0

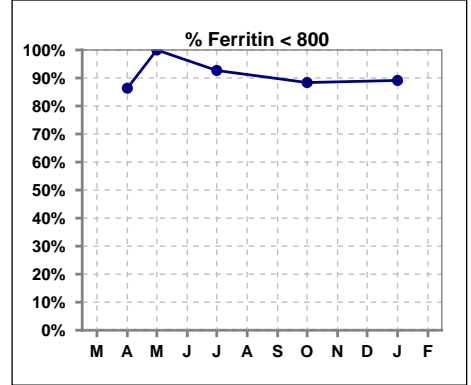




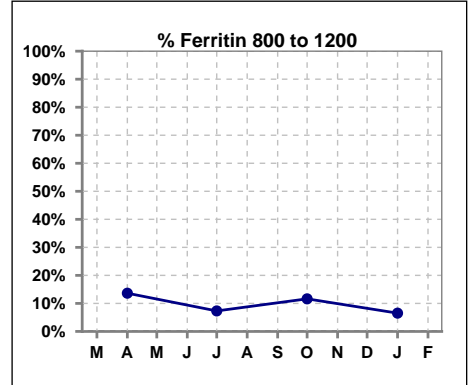
**V. ANEMIA - CONT.**

**Iron Profile**

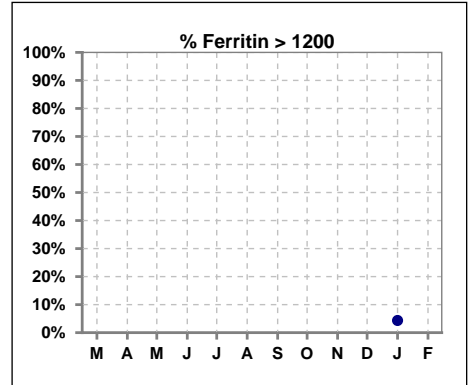
	Mar	Apr	May	Jun	Jul	Aug	Sep	Oct	Nov	Dec	Jan	Feb
# Ferritin		44	7		41			43			46	
# Ferritin < 800		38	7		38			38			41	
Pop. Mean		361	340		307			364			352	
Std. Deviation		310	186		256			284			333	
<b>% Ferritin &lt; 800</b>		<b>86%</b>	<b>100%</b>		<b>93%</b>			<b>88%</b>			<b>89%</b>	



	Mar	Apr	May	Jun	Jul	Aug	Sep	Oct	Nov	Dec	Jan	Feb
# Ferritin		44	7		41			43			46	
# Ferritin 800 to 1200		6			3			5			3	
Pop. Mean		361	340		307			364			352	
Std. Deviation		310	186		256			284			333	
<b>% Ferritin 800 to 1200</b>		<b>14%</b>			<b>7%</b>			<b>12%</b>			<b>7%</b>	



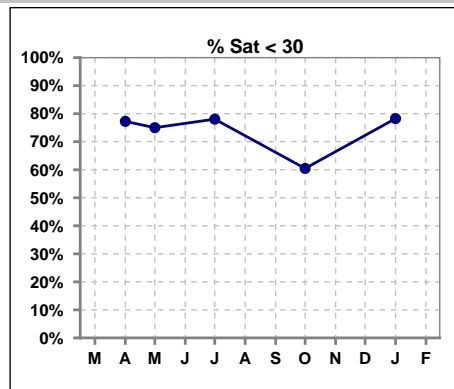
	Mar	Apr	May	Jun	Jul	Aug	Sep	Oct	Nov	Dec	Jan	Feb
# Ferritin		44	7		41			43			46	
# Ferritin > 1200												2
Pop. Mean		361	340		307			364			352	
Std. Deviation		310	186		256			284			333	
<b>% Ferritin &gt; 1200</b>												<b>4%</b>



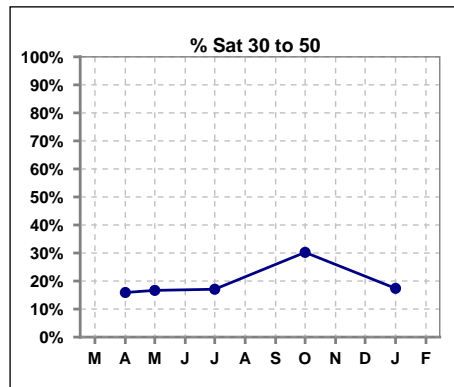
Methodology: a) All labs for 'Adequacy of Dialysis', 'Nutrition', 'Osteodystrophy', 'Anemia' and 'Diabetes' based on last value of month; b) BP's and #L processed are average of all values for month; c) Access data takes last access of month; d) Values for SGA and 'Infection Control' use most recent result.

**V. ANEMIA - CONT.**

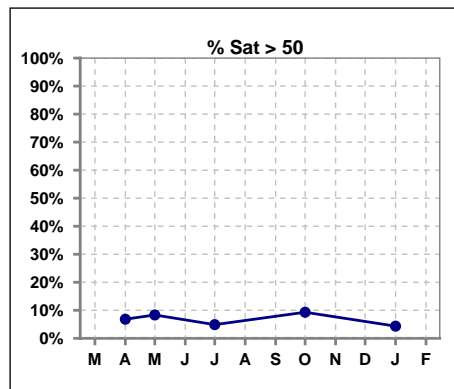
	Mar	Apr	May	Jun	Jul	Aug	Sep	Oct	Nov	Dec	Jan	Feb
# % Sat		44	12		41			43			46	
# % Sat < 30		34	9		32			26			36	
Pop. Mean		24	24		26			27			25	
Std. Deviation		15	15		14			14			14	
<b>% % Sat &lt; 30</b>		<b>77%</b>	<b>75%</b>		<b>78%</b>			<b>60%</b>			<b>78%</b>	



	Mar	Apr	May	Jun	Jul	Aug	Sep	Oct	Nov	Dec	Jan	Feb
# % Sat		44	12		41			43			46	
# % Sat 30 to 50		7	2		7			13			8	
Pop. Mean		24	24		26			27			25	
Std. Deviation		15	15		14			14			14	
<b>% % Sat 30 to 50</b>		<b>16%</b>	<b>17%</b>		<b>17%</b>			<b>30%</b>			<b>17%</b>	



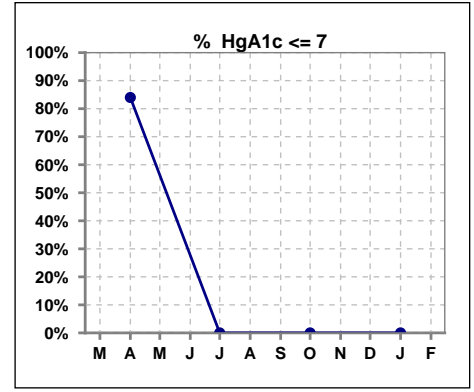
	Mar	Apr	May	Jun	Jul	Aug	Sep	Oct	Nov	Dec	Jan	Feb
# % Sat		44	12		41			43			46	
# % Sat > 50		3	1		2			4			2	
Pop. Mean		24	24		26			27			25	
Std. Deviation		15	15		14			14			14	
<b>% % Sat &gt; 50</b>		<b>7%</b>	<b>8%</b>		<b>5%</b>			<b>9%</b>			<b>4%</b>	



Methodology: a) All labs for 'Adequacy of Dialysis', 'Nutrition', 'Osteodystrophy', 'Anemia' and 'Diabetes' based on last value of month; b) BP's and #L processed are average of all values for month; c) Access data takes last access of month; d) Values for SGA and 'Infection Control' use most recent result.

**VI. Diabetes**

	Mar	Apr	May	Jun	Jul	Aug	Sep	Oct	Nov	Dec	Jan	Feb
# HgA1c		25			0			0			0	
# HgA1c <= 7		21			0			0			0	
Pop. Mean		6.1			0			0			0	
Std. Deviation		1.31			0			0			0	
<b>% HgA1c &lt;= 7</b>		<b>84%</b>			<b>0%</b>			<b>0%</b>			<b>0%</b>	

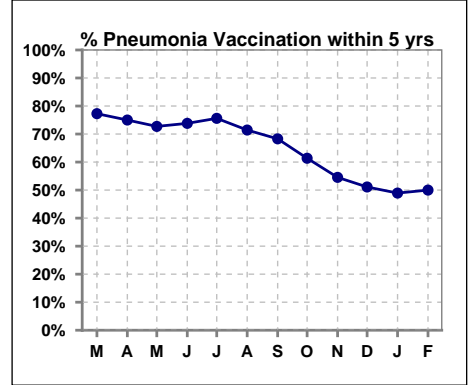


Methodology: a) All labs for 'Adequacy of Dialysis', 'Nutrition', 'Osteodystrophy', 'Anemia' and 'Diabetes' based on last value of month; b) BP's and #L processed are average of all values for month; c) Access data takes last access of month; d) Values for SGA and 'Infection Control' use most recent result.

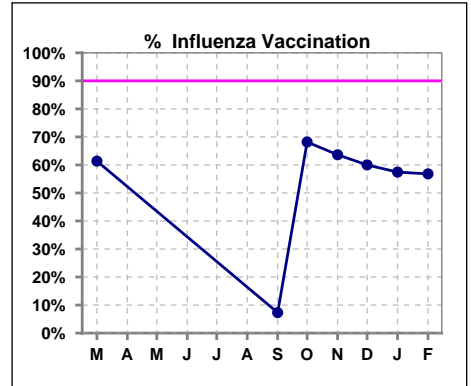
**VII. Infection Control**

**Pneumonia vaccination within the past five years**

	Mar	Apr	May	Jun	Jul	Aug	Sep	Oct	Nov	Dec	Jan	Feb
<b># Patient</b>	44	44	44	42	41	42	41	44	44	45	47	44
<b># Pneumonia</b>	34	33	32	31	31	30	28	27	24	23	23	22
<b>% Pneumonia</b>	77%	75%	73%	74%	76%	71%	68%	61%	55%	51%	49%	50%



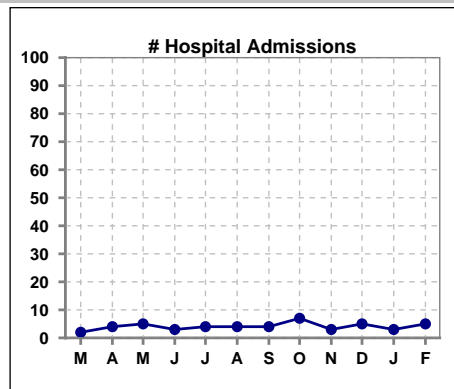
	Mar	Apr	May	Jun	Jul	Aug	Sep	Oct	Nov	Dec	Jan	Feb
<b># Patient</b>	44						41	44	44	45	47	44
<b># Influenza</b>	27						3	30	28	27	27	25
<b>% Influenza</b>	61%						7%	68%	64%	60%	57%	57%



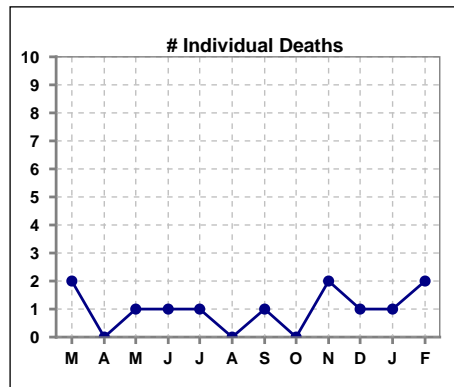
Methodology: a) All labs for 'Adequacy of Dialysis', 'Nutrition', 'Osteodystrophy', 'Anemia' and 'Diabetes' based on last value of month; b) BP's and #L processed are average of all values for month; c) Access data takes last access of month; d) Values for SGA and 'Infection Control' use most recent result.

**VIII. Outcome measures**

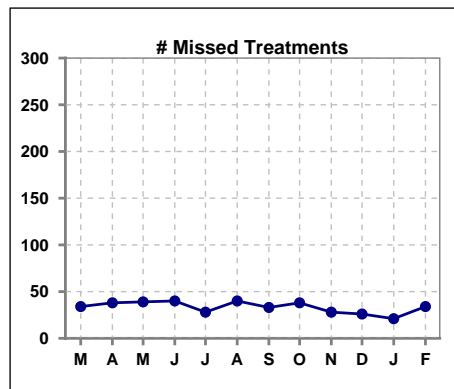
	Mar	Apr	May	Jun	Jul	Aug	Sep	Oct	Nov	Dec	Jan	Feb
# Patient	44	44	44	42	41	42	41	44	44	45	47	44
# Hospital Admissions	2	4	5	3	4	4	4	7	3	5	3	5



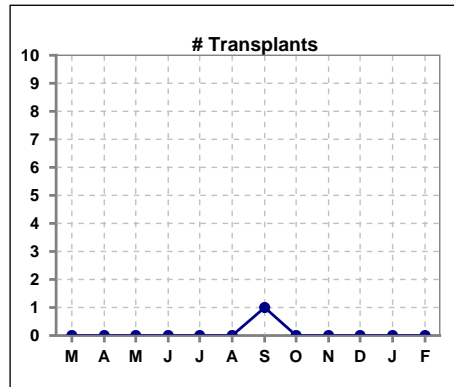
	Mar	Apr	May	Jun	Jul	Aug	Sep	Oct	Nov	Dec	Jan	Feb
# Patient	44	44	44	42	41	42	41	44	44	45	47	44
# Individual Deaths	2	0	1	1	1	0	1	0	2	1	1	2



	Mar	Apr	May	Jun	Jul	Aug	Sep	Oct	Nov	Dec	Jan	Feb
# Patient	44	44	44	42	41	42	41	44	44	45	47	44
# Missed Treatments	34	38	39	40	28	40	33	38	28	26	21	34



	Mar	Apr	May	Jun	Jul	Aug	Sep	Oct	Nov	Dec	Jan	Feb
# Patient	44	44	44	42	41	42	41	44	44	45	47	44
# Transplants	0	0	0	0	0	0	1	0	0	0	0	0



Methodology: a) All labs for 'Adequacy of Dialysis', 'Nutrition', 'Osteodystrophy', 'Anemia' and 'Diabetes' based on last value of month; b) BP's and #L processed are average of all values for month; c) Access data takes last access of month; d) Values for SGA and 'Infection Control' use most recent result.