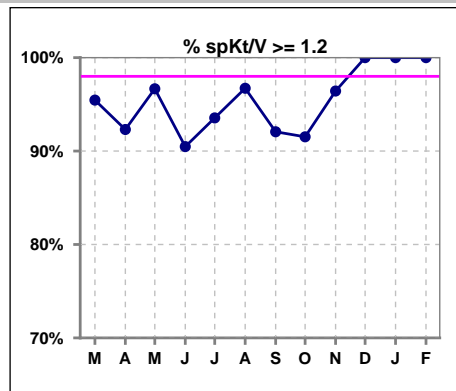
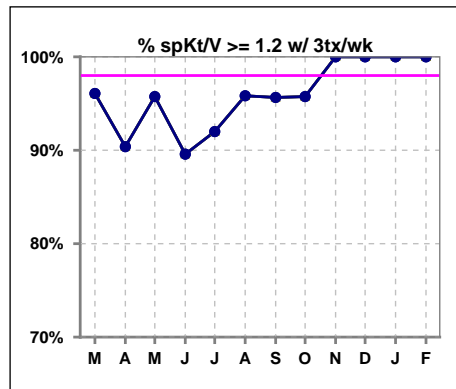


I. ADEQUACY OF DIALYSIS

	Mar	Apr	May	Jun	Jul	Aug	Sep	Oct	Nov	Dec	Jan	Feb
# spKt/V	66	65	60	63	62	61	63	59	56	51	51	47
# spKt/V >= 1.2	63	60	58	57	58	59	58	54	54	51	51	47
Pop. Mean	1.59	1.58	1.52	1.50	1.58	1.55	1.56	1.56	1.57	1.55	1.55	1.57
Std. Deviation	0.36	0.44	0.32	0.30	0.35	0.32	0.38	0.40	0.34	0.31	0.41	0.35
% spKt/V >= 1.2	95%	92%	97%	90%	94%	97%	92%	92%	96%	100%	100%	100%

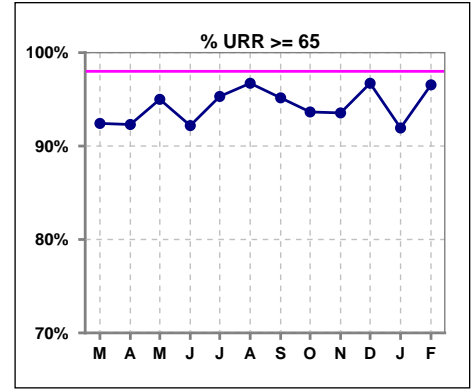


	Mar	Apr	May	Jun	Jul	Aug	Sep	Oct	Nov	Dec	Jan	Feb
# spKt/V w/ 3tx/wk	51	52	47	48	50	48	46	47	47	45	45	43
# spKt/V >= 1.2 w/3tx/wk	49	47	45	43	46	46	44	45	47	45	45	43
Pop. Mean	1.59	1.57	1.52	1.49	1.58	1.57	1.58	1.57	1.59	1.54	1.54	1.56
Std. Deviation	0.36	0.48	0.33	0.32	0.36	0.34	0.37	0.41	0.33	0.32	0.43	0.35
% >= 1.2 w/3tx/wk	96%	90%	96%	90%	92%	96%	96%	96%	100%	100%	100%	100%

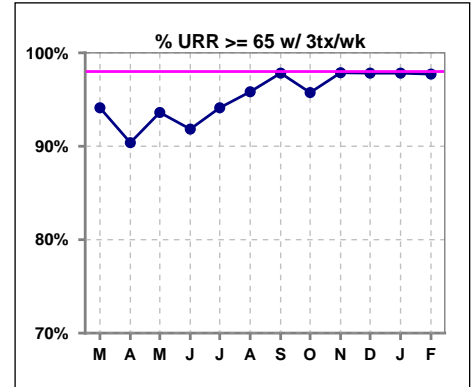


I. ADEQUACY OF DIALYSIS - CONT.

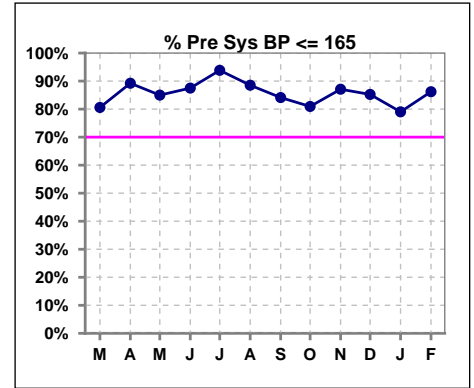
	Mar	Apr	May	Jun	Jul	Aug	Sep	Oct	Nov	Dec	Jan	Feb
# URR	66	65	60	64	64	61	62	63	62	61	62	58
# URR >= 65	61	60	57	59	61	59	59	59	58	59	57	56
Pop. Mean	74	73	73	73	74	74	74	73	74	74	73	73
Std. Deviation	8.61	7.77	7.43	6.28	6.20	6.17	6.99	6.40	7.23	6.16	6.49	6.95
% URR >= 65	92%	92%	95%	92%	95%	97%	95%	94%	94%	97%	92%	97%



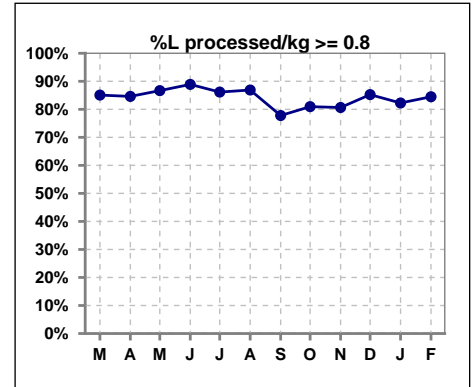
	Mar	Apr	May	Jun	Jul	Aug	Sep	Oct	Nov	Dec	Jan	Feb
# URR w/ 3tx/wk	51	52	47	49	51	48	46	47	47	46	46	44
# URR>=65 w/ 3tx/wk	48	47	44	45	48	46	45	45	46	45	45	43
Pop. Mean	74	73	72	72	74	74	74	74	75	73	73	74
Std. Deviation	8.95	8.28	7.75	6.50	6.39	6.37	6.15	5.87	5.91	5.67	5.74	6.08
% URR>=65 w/ 3tx/wk	94%	90%	94%	92%	94%	96%	98%	96%	98%	98%	98%	98%



	Mar	Apr	May	Jun	Jul	Aug	Sep	Oct	Nov	Dec	Jan	Feb
# Pre Sys BP	67	65	60	64	65	61	63	63	62	61	62	58
# Pre Sys BP <= 165	54	60	53	56	61	54	53	51	54	53	53	51
Pop. Mean	146	147	146	144	143	145	146	148	148	148	150	148
Std. Deviation	19.1	16.2	17.5	16.4	15.1	15.6	16.9	17.0	15.1	16.0	14.5	15.8
% Pre Sys BP <=165	81%	89%	85%	88%	94%	89%	84%	81%	87%	85%	79%	86%



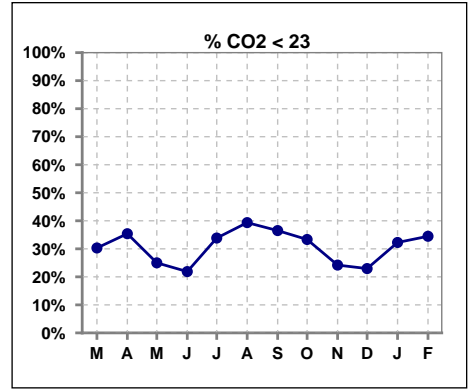
	Mar	Apr	May	Jun	Jul	Aug	Sep	Oct	Nov	Dec	Jan	Feb
# L processed/kg	67	65	60	63	65	61	63	63	62	61	62	58
# L processed/kg>=0.8	57	55	52	56	56	53	49	51	50	52	51	49
Pop. Mean	1	1	1	1	1	1	1	1	1	1	1	1
Std. Deviation	0.3	0.3	0.3	0.3	0.3	0.3	0.3	0.3	0.3	0.3	0.3	0.3
% L processed/kg>=0.8	85%	85%	87%	89%	86%	87%	78%	81%	81%	85%	82%	84%



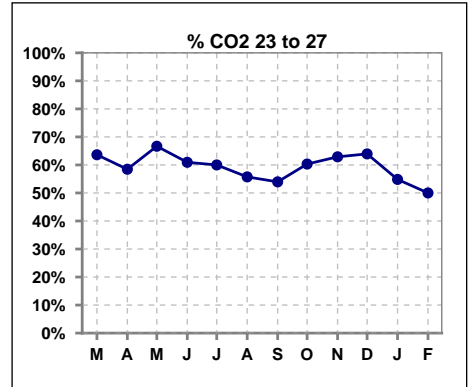
Methodology: a) All labs for 'Adequacy of Dialysis', 'Nutrition', 'Osteodystrophy', 'Anemia' and 'Diabetes' based on last value of month; b) BP's and #L processed are average of all values for month; c) Access data takes last access of month; d) Values for SGA and 'Infection Control' use most recent result.

I. ADEQUACY OF DIALYSIS - CONT.

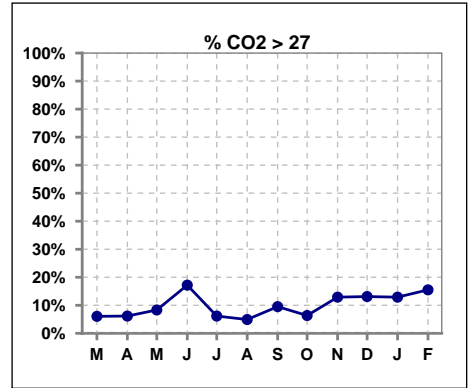
	Mar	Apr	May	Jun	Jul	Aug	Sep	Oct	Nov	Dec	Jan	Feb
# CO2	66	65	60	64	65	61	63	63	62	61	62	58
# CO2 < 23	20	23	15	14	22	24	23	21	15	14	20	20
Pop. Mean	23	23	24	25	24	23	23	24	25	24	24	24
Std. Deviation	2.72	2.82	2.52	2.75	2.54	2.99	3.29	3.02	2.92	2.97	3.05	3.34
% CO2 < 23	30%	35%	25%	22%	34%	39%	37%	33%	24%	23%	32%	34%



	Mar	Apr	May	Jun	Jul	Aug	Sep	Oct	Nov	Dec	Jan	Feb
# CO2	66	65	60	64	65	61	63	63	62	61	62	58
# CO2 23 to 27	42	38	40	39	39	34	34	38	39	39	34	29
Pop. Mean	23	23	24	25	24	23	23	24	25	24	24	24
Std. Deviation	2.72	2.82	2.52	2.75	2.54	2.99	3.29	3.02	2.92	2.97	3.05	3.34
% CO2 23 to 27	64%	58%	67%	61%	60%	56%	54%	60%	63%	64%	55%	50%



	Mar	Apr	May	Jun	Jul	Aug	Sep	Oct	Nov	Dec	Jan	Feb
# CO2	66	65	60	64	65	61	63	63	62	61	62	58
# CO2 > 27	4	4	5	11	4	3	6	4	8	8	8	9
Pop. Mean	23	23	24	25	24	23	23	24	25	24	24	24
Std. Deviation	2.72	2.82	2.52	2.75	2.54	2.99	3.29	3.02	2.92	2.97	3.05	3.34
% CO2 > 27	6%	6%	8%	17%	6%	5%	10%	6%	13%	13%	13%	16%

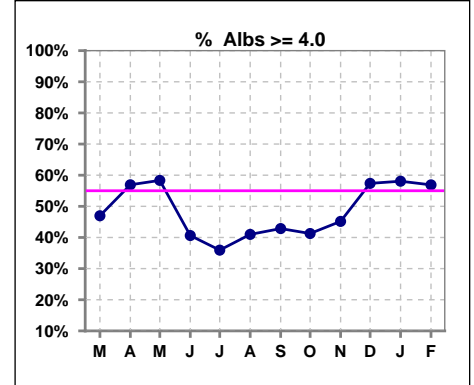


Methodology: a) All labs for 'Adequacy of Dialysis', 'Nutrition', 'Osteodystrophy', 'Anemia' and 'Diabetes' based on last value of month; b) BP's and #L processed are average of all values for month; c) Access data takes last access of month; d) Values for SGA and 'Infection Control' use most recent result.

*Albumin values use BCG method - as of July 2001

II. NUTRITION

	Mar	Apr	May	Jun	Jul	Aug	Sep	Oct	Nov	Dec	Jan	Feb
# Albumin	66	65	60	64	64	61	63	63	62	61	62	58
# Albumin >= 4.0	31	37	35	26	23	25	27	26	28	35	36	33
Pop. Mean	3.9	3.9	4.0	3.8	3.8	3.8	3.8	3.8	3.8	4.0	3.9	4.0
Std. Deviation	0.27	0.33	0.30	0.36	0.37	0.40	0.35	0.37	0.39	0.37	0.36	0.34
% Alb >= 4.0	47%	57%	58%	41%	36%	41%	43%	41%	45%	57%	58%	57%

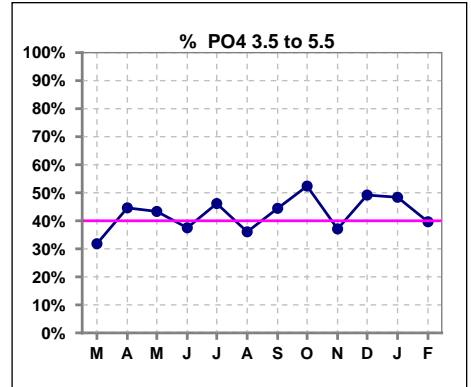


Methodology: a) All labs for 'Adequacy of Dialysis', 'Nutrition', 'Osteodystrophy', 'Anemia' and 'Diabetes' based on last value of month; b) BP's and #L processed are average of all values for month; c) Access data takes last access of month; d) Values for SGA and 'Infection Control' use most recent result.

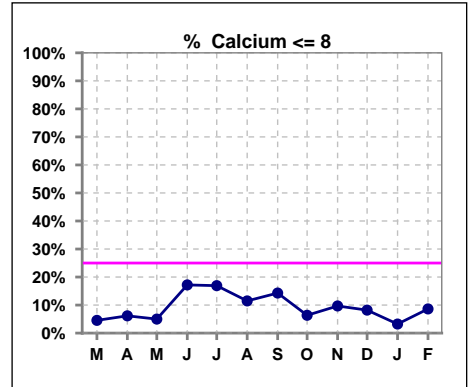
Lab methodology for PTH changed January 2012

III. OSTEODYSTROPHY

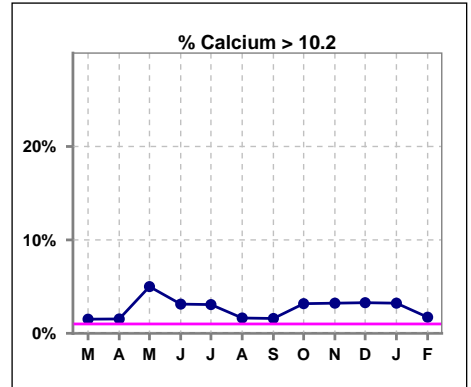
	Mar	Apr	May	Jun	Jul	Aug	Sep	Oct	Nov	Dec	Jan	Feb
# PO4	66	65	60	64	65	61	63	63	62	61	62	58
# PO4 3.5 to 5.5	21	29	26	24	30	22	28	33	23	30	30	23
Pop. Mean	6.3	6.0	5.9	6.2	5.9	6.0	5.9	5.8	6.0	6.0	6.0	6.0
Std. Deviation	2.07	2.07	2.06	1.83	1.66	1.82	1.86	1.72	1.67	1.78	1.79	1.62
% PO4 3.5 to 5.5	32%	45%	43%	38%	46%	36%	44%	52%	37%	49%	48%	40%



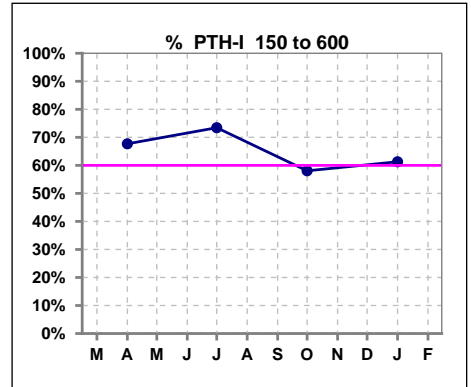
	Mar	Apr	May	Jun	Jul	Aug	Sep	Oct	Nov	Dec	Jan	Feb
# Calcium	66	65	60	64	65	61	63	63	62	61	62	58
# Calcium <= 8	3	4	3	11	11	7	9	4	6	5	2	5
Pop. Mean	9.1	9.1	9.2	8.9	8.9	8.9	8.9	9.0	9.0	9.1	9.1	9.0
Std. Deviation	0.69	0.65	0.68	0.76	0.76	0.78	0.70	0.70	0.73	0.72	0.66	0.68
% Calcium <= 8	5%	6%	5%	17%	17%	11%	14%	6%	10%	8%	3%	9%



	Mar	Apr	May	Jun	Jul	Aug	Sep	Oct	Nov	Dec	Jan	Feb
# Calcium	66	65	60	64	65	61	63	63	62	61	62	58
# Calcium > 10.2	1	1	3	2	2	1	1	2	2	2	2	1
Pop. Mean	9.1	9.1	9.2	8.9	8.9	8.9	8.9	9.0	9.0	9.1	9.1	9.0
Std. Deviation	0.69	0.65	0.68	0.76	0.76	0.78	0.70	0.70	0.73	0.72	0.66	0.68
% Calcium > 10.2	2%	2%	5%	3%	3%	2%	2%	3%	3%	3%	3%	2%



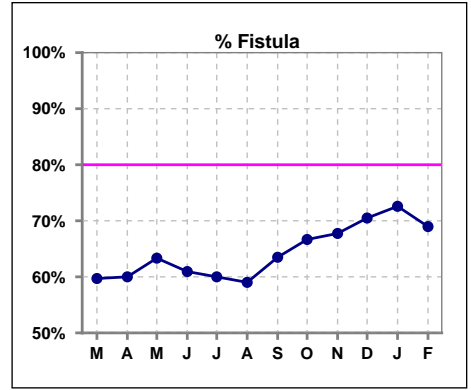
	Mar	Apr	May	Jun	Jul	Aug	Sep	Oct	Nov	Dec	Jan	Feb
# PTH-I		65			64				62		62	
# PTH-I 150 to 600		44			47				36		38	
Pop. Mean		454			474				470		452	
Std. Deviation		380			348				423		311	
% PTH-I 150 to 600		68%			73%				58%		61%	



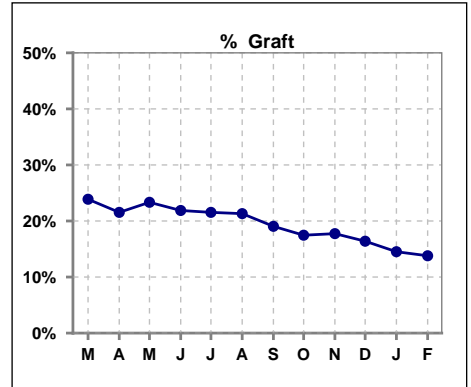
Methodology: a) All labs for 'Adequacy of Dialysis', 'Nutrition', 'Osteodystrophy', 'Anemia' and 'Diabetes' based on last value of month; b) BP's and #L processed are average of all values for month; c) Access data takes last access of month; d) Values for SGA and 'Infection Control' use most recent result.

IV. ACCESS

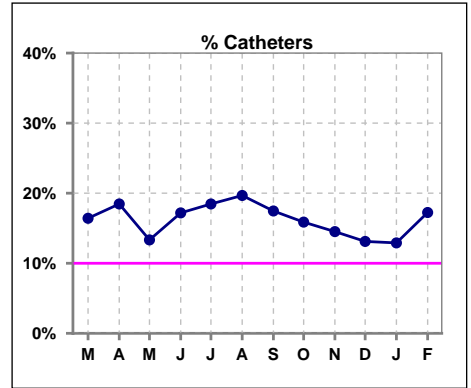
	Mar	Apr	May	Jun	Jul	Aug	Sep	Oct	Nov	Dec	Jan	Feb
# Access	67	65	60	64	65	61	63	63	62	61	62	58
# Fistula	40	39	38	39	39	36	40	42	42	43	45	40
% Fistula	60%	60%	63%	61%	60%	59%	63%	67%	68%	70%	73%	69%



	Mar	Apr	May	Jun	Jul	Aug	Sep	Oct	Nov	Dec	Jan	Feb
# Access	67	65	60	64	65	61	63	63	62	61	62	58
# Graft	16	14	14	14	14	13	12	11	11	10	9	8
% Graft	24%	22%	23%	22%	22%	21%	19%	17%	18%	16%	15%	14%



	Mar	Apr	May	Jun	Jul	Aug	Sep	Oct	Nov	Dec	Jan	Feb
# Access	67	65	60	64	65	61	63	63	62	61	62	58
# Catheters	11	12	8	11	12	12	11	10	9	8	8	10
% Catheters	16%	18%	13%	17%	18%	20%	17%	16%	15%	13%	13%	17%



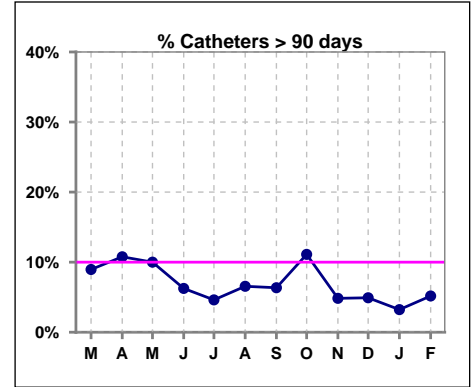
Methodology: a) All labs for 'Adequacy of Dialysis', 'Nutrition', 'Osteodystrophy', 'Anemia' and 'Diabetes' based on last value of month; b) BP's and #L processed are average of all values for month; c) Access data takes last access of month; d) Values for SGA and 'Infection Control' use most recent result.

IV. ACCESS - CONT.

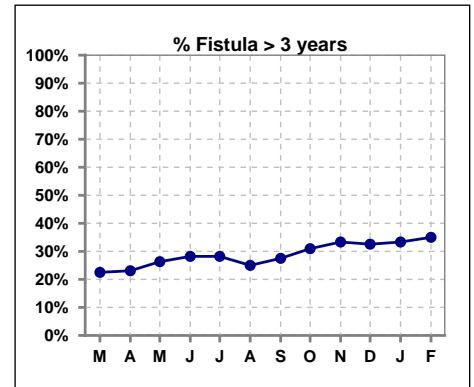
Catheters > 90 days

	Mar	Apr	May	Jun	Jul	Aug	Sep	Oct	Nov	Dec	Jan	Feb
# Access	67	65	60	64	65	61	63	63	62	61	62	58
# Catheters	6	7	6	4	3	4	4	7	3	3	2	3
% Catheters	9%	11%	10%	6%	5%	7%	6%	11%	5%	5%	3%	5%

Definition: Catheter in use on last treatment of the month



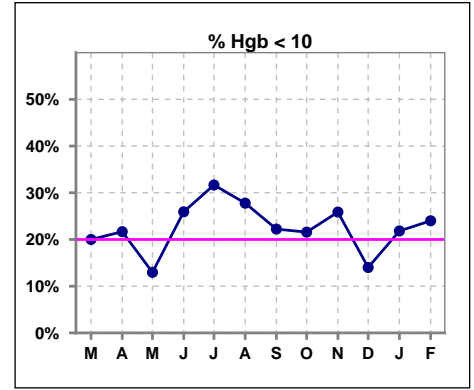
	Mar	Apr	May	Jun	Jul	Aug	Sep	Oct	Nov	Dec	Jan	Feb
# Fistula	40	39	38	39	39	36	40	42	42	43	45	40
# Fistula > 3 yrs	9	9	10	11	11	9	11	13	14	14	15	14
% Fistula > 3 yrs	23%	23%	26%	28%	28%	25%	28%	31%	33%	33%	33%	35%



V. ANEMIA

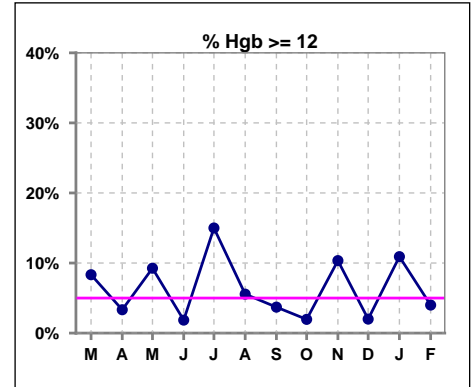
	Mar	Apr	May	Jun	Jul	Aug	Sep	Oct	Nov	Dec	Jan	Feb
# Hgb	60	60	54	54	60	54	54	51	58	50	55	50
# Hgb < 10	12	13	7	14	19	15	12	11	15	7	12	12
Pop. Mean	10.6	10.6	10.8	10.4	10.7	10.5	10.5	10.5	10.5	10.8	10.5	10.4
Std. Deviation	1.1	1.1	1.1	1.3	1.6	1.3	1.3	1.2	1.4	1.1	1.6	1.4
% Hgb < 10	20%	22%	13%	26%	32%	28%	22%	22%	26%	14%	22%	24%

Note: Excludes patients who received no ESA in month.



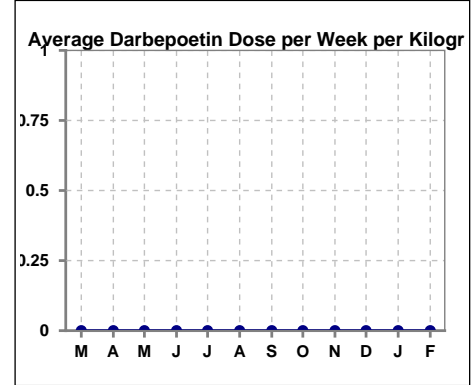
	Mar	Apr	May	Jun	Jul	Aug	Sep	Oct	Nov	Dec	Jan	Feb
# Hgb	60	60	54	54	60	54	54	51	58	50	55	50
# Hgb >= 12	5	2	5	1	9	3	2	1	6	1	6	2
Pop. Mean	10.6	10.6	10.8	10.4	10.7	10.5	10.5	10.5	10.5	10.8	10.5	10.4
Std. Deviation	1.1	1.1	1.1	1.3	1.6	1.3	1.3	1.2	1.4	1.1	1.6	1.4
% Hgb >= 12	8%	3%	9%	2%	15%	6%	4%	2%	10%	2%	11%	4%

Note: Excludes patients who received no ESA in month.



Average Darbepoetin Dose per Week per Kilogram

	Mar	Apr	May	Jun	Jul	Aug	Sep	Oct	Nov	Dec	Jan	Feb
# Average Darbepoetin	0	0	0	0	0	0	0	0	0	0	0	0

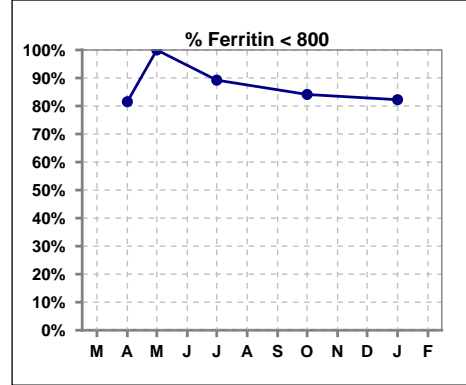


Methodology: a) All labs for 'Adequacy of Dialysis', 'Nutrition', 'Osteodystrophy', 'Anemia' and 'Diabetes' based on last value of month; b) BP's and #L processed are average of all values for month; c) Access data takes last access of month; d) Values for SGA and 'Infection Control' use most recent result.

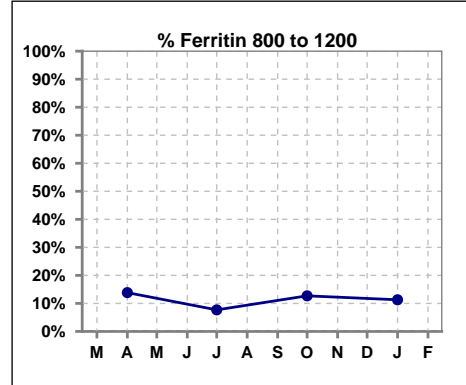
V. ANEMIA - CONT.

Iron Profile

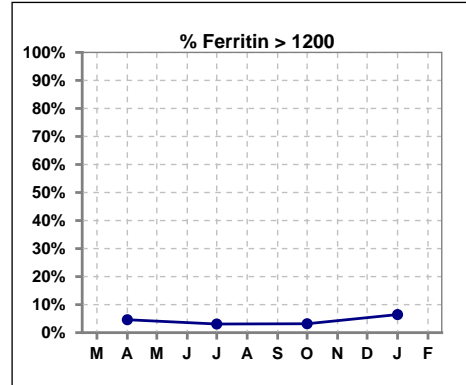
	Mar	Apr	May	Jun	Jul	Aug	Sep	Oct	Nov	Dec	Jan	Feb
# Ferritin		65	2		65			63			62	
# Ferritin < 800		53	2		58			53			51	
Pop. Mean		461	445		469			460			482	
Std. Deviation		379	395		380			329			372	
% Ferritin < 800		82%	100%		89%			84%			82%	



	Mar	Apr	May	Jun	Jul	Aug	Sep	Oct	Nov	Dec	Jan	Feb
# Ferritin		65	2		65			63			62	
# Ferritin 800 to 1200		9			5			8			7	
Pop. Mean		461	445		469			460			482	
Std. Deviation		379	395		380			329			372	
% Ferritin 800 to 1200		14%			8%			13%			11%	

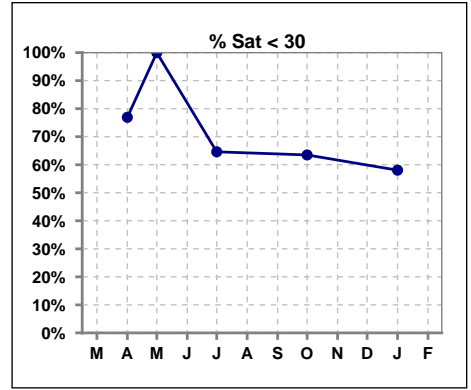


	Mar	Apr	May	Jun	Jul	Aug	Sep	Oct	Nov	Dec	Jan	Feb
# Ferritin		65	2		65			63			62	
# Ferritin > 1200		3			2			2			4	
Pop. Mean		461	445		469			460			482	
Std. Deviation		379	395		380			329			372	
% Ferritin > 1200		5%			3%			3%			6%	

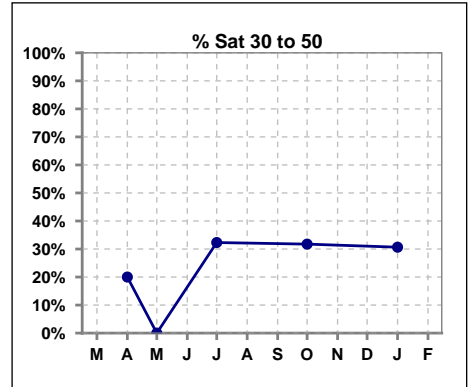


V. ANEMIA - CONT.

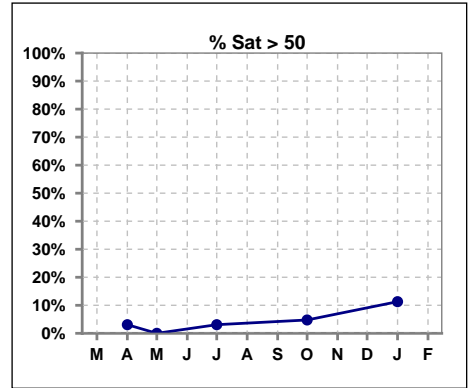
	Mar	Apr	May	Jun	Jul	Aug	Sep	Oct	Nov	Dec	Jan	Feb
# % Sat		65	2		65			63			62	
# % Sat < 30		50	2		42			40			36	
Pop. Mean		23	23		26			28			32	
Std. Deviation		10	4		10			13			18	
% % Sat < 30		77%	100%		65%			63%			58%	



	Mar	Apr	May	Jun	Jul	Aug	Sep	Oct	Nov	Dec	Jan	Feb
# % Sat		65	2		65			63			62	
# % Sat 30 to 50		13	0		21			20			19	
Pop. Mean		23	23		26			28			32	
Std. Deviation		10	4		10			13			18	
% % Sat 30 to 50		20%	0%		32%			32%			31%	

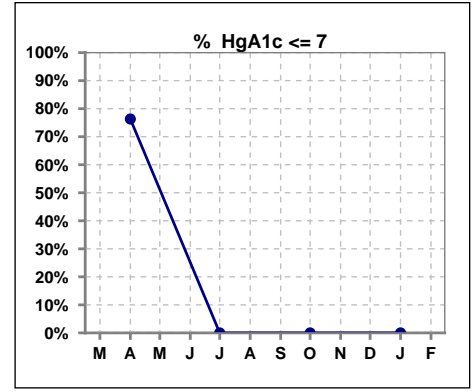


	Mar	Apr	May	Jun	Jul	Aug	Sep	Oct	Nov	Dec	Jan	Feb
# % Sat		65	2		65			63			62	
# % Sat > 50		2	0		2			3			7	
Pop. Mean		23	23		26			28			32	
Std. Deviation		10	4		10			13			18	
% % Sat > 50		3%	0%		3%			5%			11%	



VI. Diabetes

	Mar	Apr	May	Jun	Jul	Aug	Sep	Oct	Nov	Dec	Jan	Feb
# HgA1c		38			0			0			0	
# HgA1c <= 7		29			0			0			0	
Pop. Mean		6.3			0			0			0	
Std. Deviation		1.21			0			0			0	
% HgA1c <= 7		76%			0%			0%			0%	

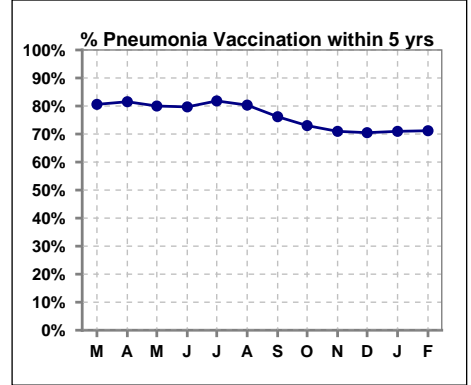


Methodology: a) All labs for 'Adequacy of Dialysis', 'Nutrition', 'Osteodystrophy', 'Anemia' and 'Diabetes' based on last value of month; b) BP's and #L processed are average of all values for month; c) Access data takes last access of month; d) Values for SGA and 'Infection Control' use most recent result.

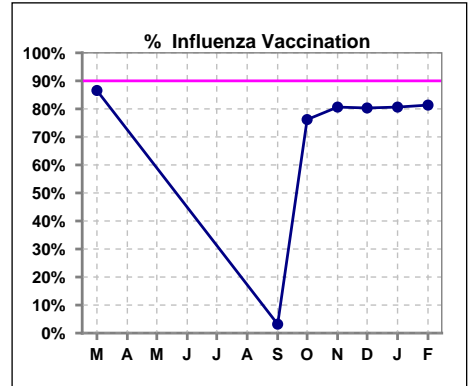
VII. Infection Control

Pneumonia vaccination within the past five years

	Mar	Apr	May	Jun	Jul	Aug	Sep	Oct	Nov	Dec	Jan	Feb
# Patient	67	65	60	64	66	61	63	63	62	61	62	59
# Pneumonia	54	53	48	51	54	49	48	46	44	43	44	42
% Pneumonia	81%	82%	80%	80%	82%	80%	76%	73%	71%	70%	71%	71%



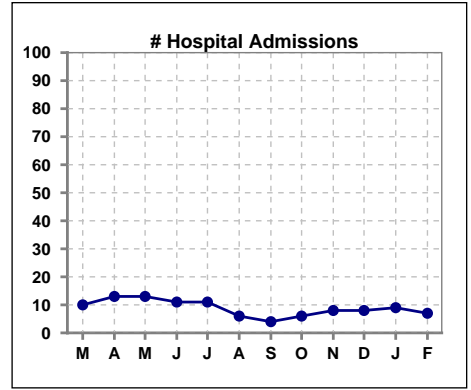
	Mar	Apr	May	Jun	Jul	Aug	Sep	Oct	Nov	Dec	Jan	Feb
# Patient	67						63	63	62	61	62	59
# Influenza	58						2	48	50	49	50	48
% Influenza	87%						3%	76%	81%	80%	81%	81%



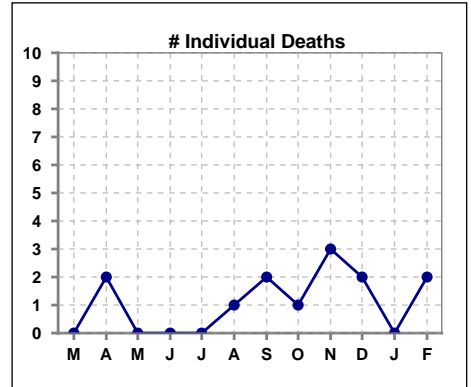
Methodology: a) All labs for 'Adequacy of Dialysis', 'Nutrition', 'Osteodystrophy', 'Anemia' and 'Diabetes' based on last value of month; b) BP's and #L processed are average of all values for month; c) Access data takes last access of month; d) Values for SGA and 'Infection Control' use most recent result.

VIII. Outcome measures

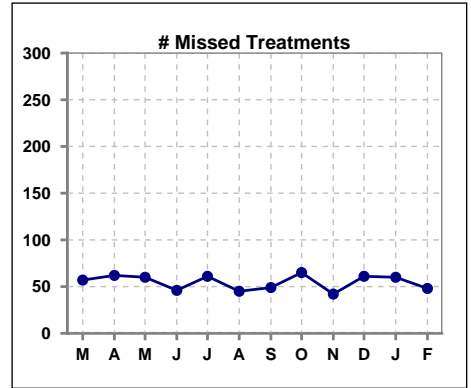
	Mar	Apr	May	Jun	Jul	Aug	Sep	Oct	Nov	Dec	Jan	Feb
# Patient	67	65	60	64	66	61	63	63	62	61	62	59
# Hospital Admissions	10	13	13	11	11	6	4	6	8	8	9	7



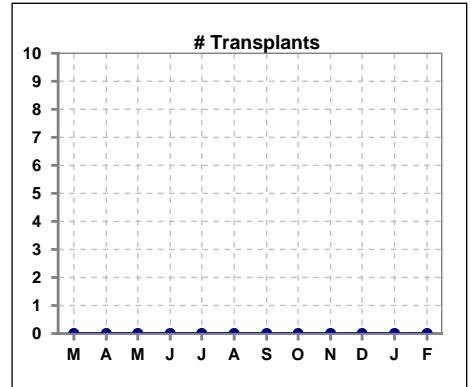
	Mar	Apr	May	Jun	Jul	Aug	Sep	Oct	Nov	Dec	Jan	Feb
# Patient	67	65	60	64	66	61	63	63	62	61	62	59
# Individual Deaths	0	2	0	0	0	1	2	1	3	2	0	2



	Mar	Apr	May	Jun	Jul	Aug	Sep	Oct	Nov	Dec	Jan	Feb
# Patient	67	65	60	64	66	61	63	63	62	61	62	59
# Missed Treatments	57	62	60	46	61	45	49	65	42	61	60	48



	Mar	Apr	May	Jun	Jul	Aug	Sep	Oct	Nov	Dec	Jan	Feb
# Patient	67	65	60	64	66	61	63	63	62	61	62	59
# Transplants	0	0	0	0	0	0	0	0	0	0	0	0



Methodology: a) All labs for 'Adequacy of Dialysis', 'Nutrition', 'Osteodystrophy', 'Anemia' and 'Diabetes' based on last value of month; b) BP's and #L processed are average of all values for month; c) Access data takes last access of month; d) Values for SGA and 'Infection Control' use most recent result.