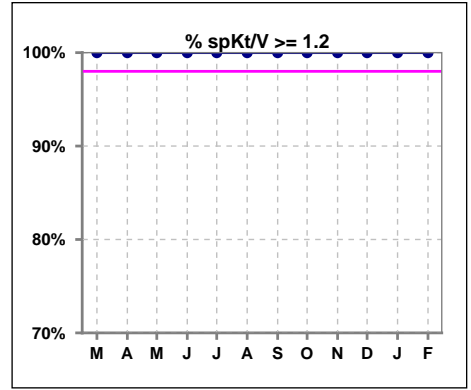
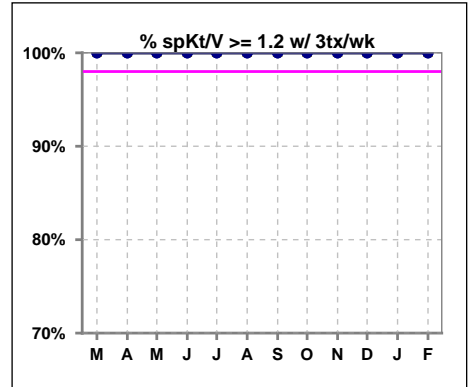


**I. ADEQUACY OF DIALYSIS**

	Mar	Apr	May	Jun	Jul	Aug	Sep	Oct	Nov	Dec	Jan	Feb
# spKt/V	99	97	95	93	90	90	90	89	87	91	85	85
# spKt/V >= 1.2	99	97	95	93	90	90	90	89	87	91	85	85
Pop. Mean	1.68	1.68	1.70	1.58	1.61	1.58	1.58	1.60	1.58	1.58	1.57	1.57
Std. Deviation	0.28	0.29	0.42	0.28	0.29	0.25	0.27	0.27	0.27	0.26	0.26	0.24
% spKt/V >= 1.2	100%	100%	100%	100%	100%	100%	100%	100%	100%	100%	100%	100%



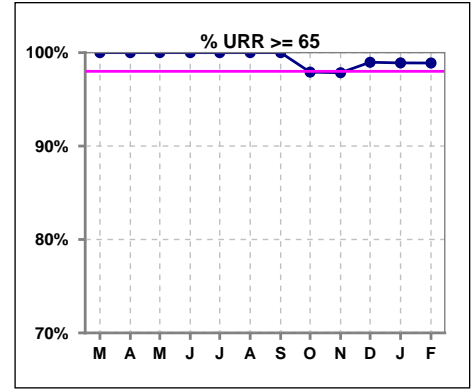
	Mar	Apr	May	Jun	Jul	Aug	Sep	Oct	Nov	Dec	Jan	Feb
# spKt/V w/ 3tx/wk	78	76	77	77	74	75	76	89	87	91	85	84
# spKt/V >= 1.2 w/3tx/wk	78	76	77	77	74	75	76	89	87	91	85	84
Pop. Mean	1.68	1.69	1.69	1.62	1.61	1.58	1.58	1.60	1.58	1.58	1.57	1.57
Std. Deviation	0.28	0.30	0.34	0.29	0.27	0.26	0.28	0.27	0.27	0.26	0.26	0.24
% >= 1.2 w/3tx/wk	100%	100%	100%	100%	100%	100%	100%	100%	100%	100%	100%	100%



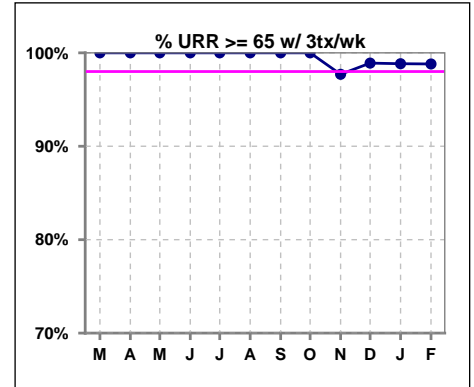
Methodology: a) All labs for 'Adequacy of Dialysis', 'Nutrition', 'Osteodystrophy', 'Anemia' and 'Diabetes' based on last value of month; b) BP's and #L processed are average of all values for month; c) Access data takes last access of month; d) Values for SGA and 'Infection Control' use most recent result.

**I. ADEQUACY OF DIALYSIS - CONT.**

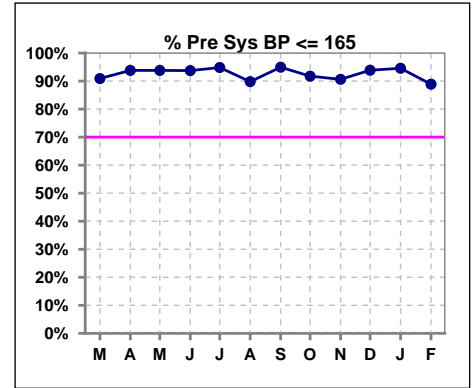
	Mar	Apr	May	Jun	Jul	Aug	Sep	Oct	Nov	Dec	Jan	Feb
# URR	99	97	94	96	97	96	96	96	93	97	91	90
# URR >= 65	99	97	94	96	97	96	96	94	91	96	90	89
Pop. Mean	76	76	76	75	75	75	75	75	75	74	74	74
Std. Deviation	5.29	5.49	5.71	5.54	5.56	4.89	5.14	5.35	5.26	5.12	5.10	4.98
% URR >= 65	100%	100%	100%	100%	100%	100%	100%	98%	98%	99%	99%	99%



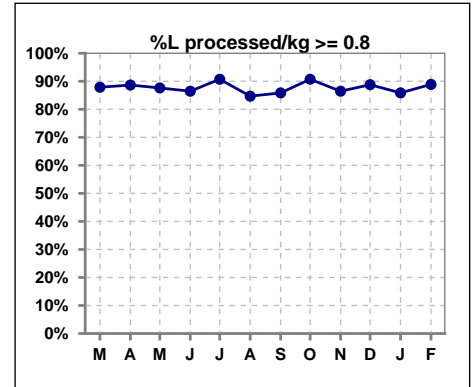
	Mar	Apr	May	Jun	Jul	Aug	Sep	Oct	Nov	Dec	Jan	Feb
# URR w/ 3tx/wk	78	76	77	77	74	75	76	89	87	91	86	84
# URR >= 65 w/ 3tx/wk	78	76	77	77	74	75	76	89	85	90	85	83
Pop. Mean	76	76	76	75	75	75	75	75	74	74	74	74
Std. Deviation	5.10	5.62	5.86	5.57	5.16	4.95	5.19	5.12	5.37	5.17	5.11	5.07
% URR >= 65 w/ 3tx/wk	100%	100%	100%	100%	100%	100%	100%	100%	98%	99%	99%	99%



	Mar	Apr	May	Jun	Jul	Aug	Sep	Oct	Nov	Dec	Jan	Feb
# Pre Sys BP	99	97	97	96	97	98	99	97	96	98	92	90
# Pre Sys BP <= 165	91	91	91	91	92	88	95	91	88	95	89	80
Pop. Mean	140	138	137	138	136	140	139	140	141	141	141	141
Std. Deviation	17.8	17.7	18.7	18.5	18.2	18.2	16.9	17.4	17.8	16.3	17.0	19.0
% Pre Sys BP <= 165	91%	94%	94%	94%	95%	90%	95%	92%	91%	94%	95%	89%



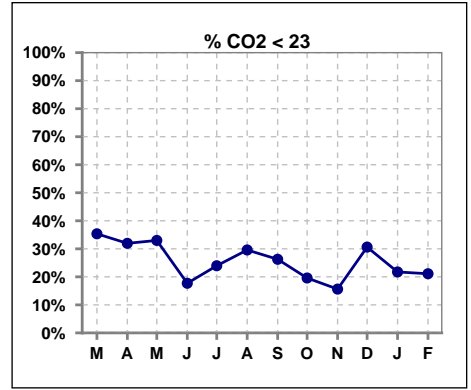
	Mar	Apr	May	Jun	Jul	Aug	Sep	Oct	Nov	Dec	Jan	Feb
# L processed/kg	99	97	97	96	97	98	99	97	96	98	92	90
# L processed/kg >= 0.8	87	86	85	83	88	83	85	88	83	87	79	80
Pop. Mean	1	1	1	1	1	1	1	1	1	1	1	1
Std. Deviation	0.3	0.3	0.4	0.3	0.3	0.3	0.3	0.3	0.3	0.3	0.2	0.2
% L processed/kg >= 0.8	88%	89%	88%	86%	91%	85%	86%	91%	86%	89%	86%	89%



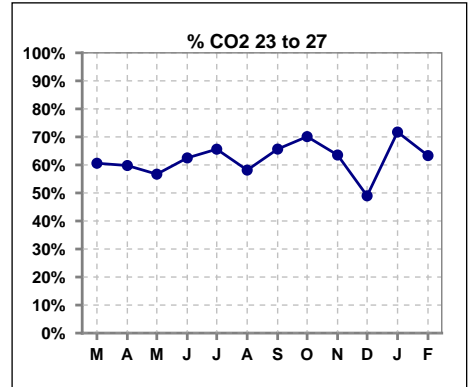
Methodology: a) All labs for 'Adequacy of Dialysis', 'Nutrition', 'Osteodystrophy', 'Anemia' and 'Diabetes' based on last value of month; b) BP's and #L processed are average of all values for month; c) Access data takes last access of month; d) Values for SGA and 'Infection Control' use most recent result.

**I. ADEQUACY OF DIALYSIS - CONT.**

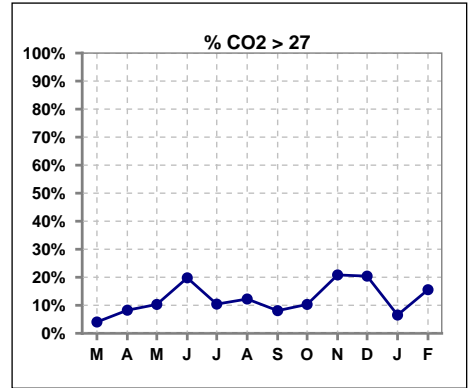
	Mar	Apr	May	Jun	Jul	Aug	Sep	Oct	Nov	Dec	Jan	Feb
# CO2	99	97	97	96	96	98	99	97	96	98	92	90
# CO2 < 23	35	31	32	17	23	29	26	19	15	30	20	19
Pop. Mean	24	24	24	25	24	24	24	25	25	25	25	25
Std. Deviation	2.66	2.65	2.78	3.03	3.13	3.57	3.28	2.46	3.11	3.25	2.45	2.82
<b>% CO2 &lt; 23</b>	<b>35%</b>	<b>32%</b>	<b>33%</b>	<b>18%</b>	<b>24%</b>	<b>30%</b>	<b>26%</b>	<b>20%</b>	<b>16%</b>	<b>31%</b>	<b>22%</b>	<b>21%</b>



	Mar	Apr	May	Jun	Jul	Aug	Sep	Oct	Nov	Dec	Jan	Feb
# CO2	99	97	97	96	96	98	99	97	96	98	92	90
# CO2 23 to 27	60	58	55	60	63	57	65	68	61	48	66	57
Pop. Mean	24	24	24	25	24	24	24	25	25	25	25	25
Std. Deviation	2.66	2.65	2.78	3.03	3.13	3.57	3.28	2.46	3.11	3.25	2.45	2.82
<b>% CO2 23 to 27</b>	<b>61%</b>	<b>60%</b>	<b>57%</b>	<b>63%</b>	<b>66%</b>	<b>58%</b>	<b>66%</b>	<b>70%</b>	<b>64%</b>	<b>49%</b>	<b>72%</b>	<b>63%</b>



	Mar	Apr	May	Jun	Jul	Aug	Sep	Oct	Nov	Dec	Jan	Feb
# CO2	99	97	97	96	96	98	99	97	96	98	92	90
# CO2 > 27	4	8	10	19	10	12	8	10	20	20	6	14
Pop. Mean	24	24	24	25	24	24	24	25	25	25	25	25
Std. Deviation	2.66	2.65	2.78	3.03	3.13	3.57	3.28	2.46	3.11	3.25	2.45	2.82
<b>% CO2 &gt; 27</b>	<b>4%</b>	<b>8%</b>	<b>10%</b>	<b>20%</b>	<b>10%</b>	<b>12%</b>	<b>8%</b>	<b>10%</b>	<b>21%</b>	<b>20%</b>	<b>7%</b>	<b>16%</b>

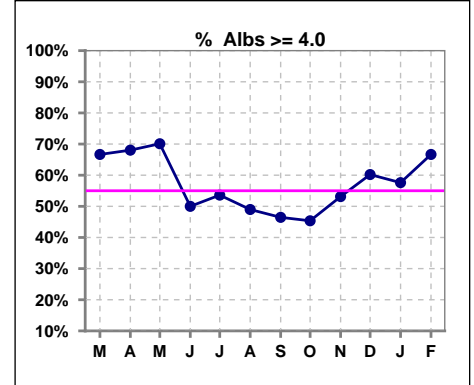


**Lake City Kidney Center - Center Hemodialysis**  
**Quality Assurance Reports**  
 Through period ending Feb. 28, 2025

\*Albumin values use BCG method - as of July 2001

**II. NUTRITION**

	Mar	Apr	May	Jun	Jul	Aug	Sep	Oct	Nov	Dec	Jan	Feb
# Albumin	99	97	97	96	97	98	99	97	96	98	92	90
# Albumin >= 4.0	66	66	68	48	52	48	46	44	51	59	53	60
Pop. Mean	4.1	4.0	4.1	3.9	3.9	3.9	3.9	3.9	3.9	4.0	4.0	4.1
Std. Deviation	0.35	0.34	0.35	0.40	0.38	0.39	0.40	0.36	0.38	0.37	0.34	0.38
% Alb >= 4.0	67%	68%	70%	50%	54%	49%	46%	45%	53%	60%	58%	67%

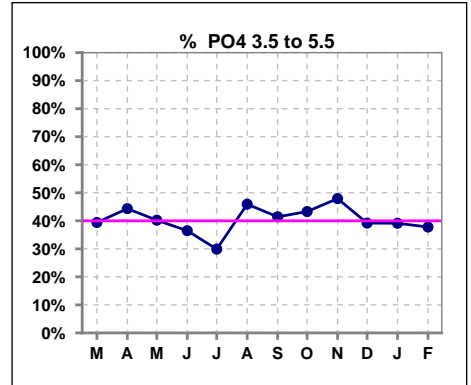


Methodology: a) All labs for 'Adequacy of Dialysis', 'Nutrition', 'Osteodystrophy', 'Anemia' and 'Diabetes' based on last value of month; b) BP's and #L processed are average of all values for month; c) Access data takes last access of month; d) Values for SGA and 'Infection Control' use most recent result.

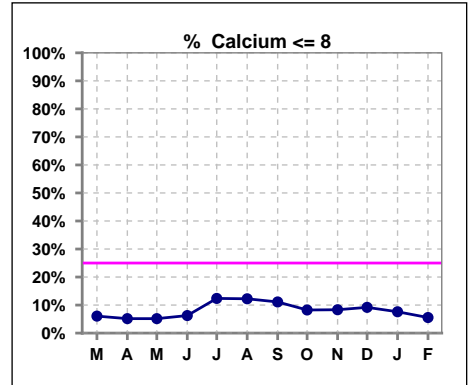
Lab methodology for PTH changed January 2012

**III. OSTEODYSTROPHY**

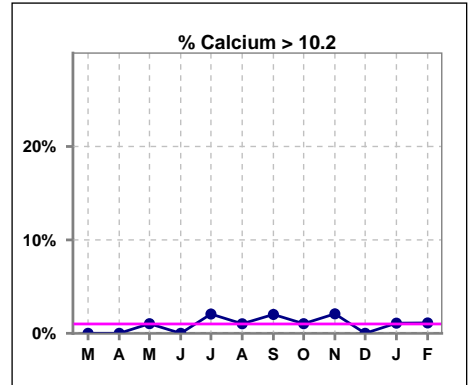
	Mar	Apr	May	Jun	Jul	Aug	Sep	Oct	Nov	Dec	Jan	Feb
# PO4	99	97	97	96	97	98	99	97	96	97	92	90
# PO4 3.5 to 5.5	39	43	39	35	29	45	41	42	46	38	36	34
Pop. Mean	5.9	5.9	5.8	6.0	6.2	6.0	5.8	5.8	5.8	6.2	6.1	6.5
Std. Deviation	1.98	1.67	1.87	1.78	1.68	1.85	1.80	1.89	1.70	1.82	1.54	1.95
% PO4 3.5 to 5.5	39%	44%	40%	36%	30%	46%	41%	43%	48%	39%	39%	38%



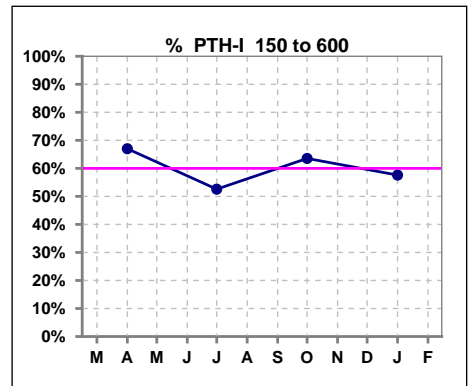
	Mar	Apr	May	Jun	Jul	Aug	Sep	Oct	Nov	Dec	Jan	Feb
# Calcium	99	97	97	96	97	98	99	97	96	98	92	90
# Calcium <= 8	6	5	5	6	12	12	11	8	8	9	7	5
Pop. Mean	9.2	9.1	9.2	9.0	9.0	8.9	8.9	9.0	9.0	9.0	9.0	9.1
Std. Deviation	0.63	0.60	0.68	0.62	0.75	0.66	0.72	0.69	0.82	0.73	0.77	0.75
% Calcium <= 8	6%	5%	5%	6%	12%	12%	11%	8%	8%	9%	8%	6%



	Mar	Apr	May	Jun	Jul	Aug	Sep	Oct	Nov	Dec	Jan	Feb
# Calcium	99	97	97	96	97	98	99	97	96	98	92	90
# Calcium > 10.2	0	0	1	0	2	1	2	1	2	0	1	1
Pop. Mean	9.2	9.1	9.2	9.0	9.0	8.9	8.9	9.0	9.0	9.0	9.0	9.1
Std. Deviation	0.63	0.60	0.68	0.62	0.75	0.66	0.72	0.69	0.82	0.73	0.77	0.75
% Calcium > 10.2	0%	0%	1%	0%	2%	1%	2%	1%	2%	0%	1%	1%



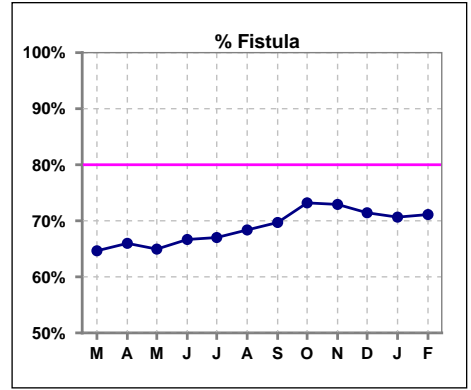
	Mar	Apr	May	Jun	Jul	Aug	Sep	Oct	Nov	Dec	Jan	Feb
# PTH-I		97			97			96			92	
# PTH-I 150 to 600		65			51			61			53	
Pop. Mean		546			612			582			509	
Std. Deviation		441			454			404			392	
% PTH-I 150 to 600		67%			53%			64%			58%	



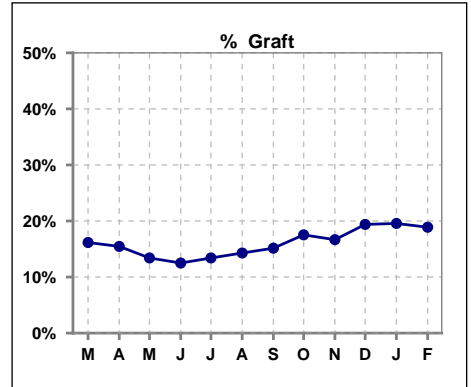
Methodology: a) All labs for 'Adequacy of Dialysis', 'Nutrition', 'Osteodystrophy', 'Anemia' and 'Diabetes' based on last value of month; b) BP's and #L processed are average of all values for month; c) Access data takes last access of month; d) Values for SGA and 'Infection Control' use most recent result.

**IV. ACCESS**

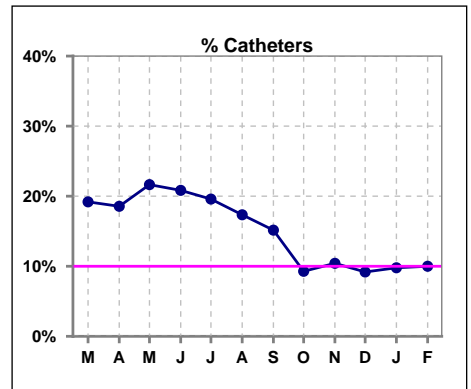
	Mar	Apr	May	Jun	Jul	Aug	Sep	Oct	Nov	Dec	Jan	Feb
<b># Access</b>	99	97	97	96	97	98	99	97	96	98	92	90
<b># Fistula</b>	64	64	63	64	65	67	69	71	70	70	65	64
<b>% Fistula</b>	65%	66%	65%	67%	67%	68%	70%	73%	73%	71%	71%	71%



	Mar	Apr	May	Jun	Jul	Aug	Sep	Oct	Nov	Dec	Jan	Feb
<b># Access</b>	99	97	97	96	97	98	99	97	96	98	92	90
<b># Graft</b>	16	15	13	12	13	14	15	17	16	19	18	17
<b>% Graft</b>	16%	15%	13%	13%	13%	14%	15%	18%	17%	19%	20%	19%



	Mar	Apr	May	Jun	Jul	Aug	Sep	Oct	Nov	Dec	Jan	Feb
<b># Access</b>	99	97	97	96	97	98	99	97	96	98	92	90
<b># Catheters</b>	19	18	21	20	19	17	15	9	10	9	9	9
<b>% Catheters</b>	19%	19%	22%	21%	20%	17%	15%	9%	10%	9%	10%	10%



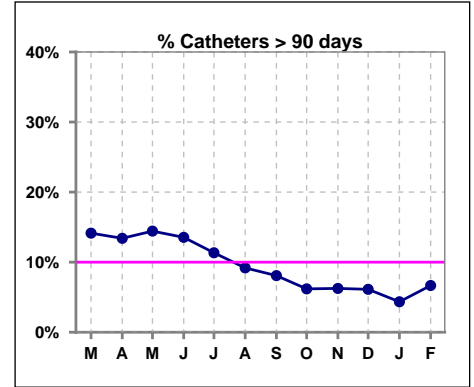
Methodology: a) All labs for 'Adequacy of Dialysis', 'Nutrition', 'Osteodystrophy', 'Anemia' and 'Diabetes' based on last value of month; b) BP's and #L processed are average of all values for month; c) Access data takes last access of month; d) Values for SGA and 'Infection Control' use most recent result.

**IV. ACCESS - CONT.**

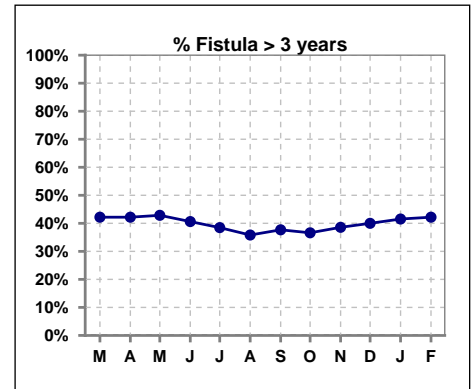
**Catheters > 90 days**

	Mar	Apr	May	Jun	Jul	Aug	Sep	Oct	Nov	Dec	Jan	Feb
<b># Access</b>	99	97	97	96	97	98	99	97	96	98	92	90
<b># Catheters</b>	14	13	14	13	11	9	8	6	6	6	4	6
<b>% Catheters</b>	14%	13%	14%	14%	11%	9%	8%	6%	6%	6%	4%	7%

Definition: Catheter in use on last treatment of the month



	Mar	Apr	May	Jun	Jul	Aug	Sep	Oct	Nov	Dec	Jan	Feb
<b># Fistula</b>	64	64	63	64	65	67	69	71	70	70	65	64
<b># Fistula &gt; 3 yrs</b>	27	27	27	26	25	24	26	26	27	28	27	27
<b>% Fistula &gt; 3 yrs</b>	42%	42%	43%	41%	38%	36%	38%	37%	39%	40%	42%	42%

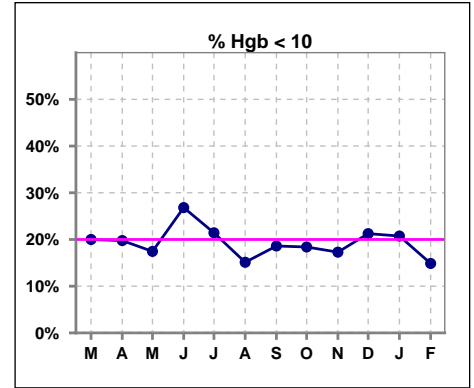


Methodology: a) All labs for 'Adequacy of Dialysis', 'Nutrition', 'Osteodystrophy', 'Anemia' and 'Diabetes' based on last value of month; b) BP's and #L processed are average of all values for month; c) Access data takes last access of month; d) Values for SGA and 'Infection Control' use most recent result.

**V. ANEMIA**

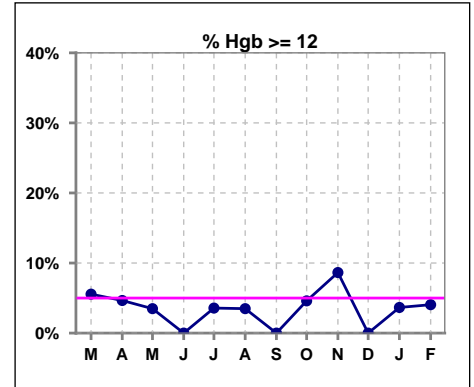
	Mar	Apr	May	Jun	Jul	Aug	Sep	Oct	Nov	Dec	Jan	Feb
# Hgb	90	86	86	82	84	86	86	87	81	80	82	74
# Hgb < 10	18	17	15	22	18	13	16	16	14	17	17	11
Pop. Mean	10.8	10.7	10.7	10.4	10.6	10.7	10.6	10.8	10.8	10.5	10.8	10.9
Std. Deviation	1.2	1.2	1.1	1.1	1.1	1.0	0.9	1.2	1.1	1.0	1.0	1.0
% Hgb < 10	20%	20%	17%	27%	21%	15%	19%	18%	17%	21%	21%	15%

Note: Excludes patients who received no ESA in month.



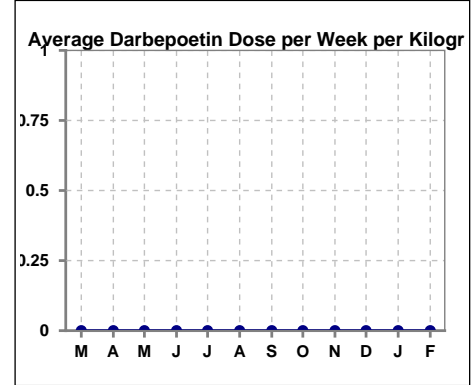
	Mar	Apr	May	Jun	Jul	Aug	Sep	Oct	Nov	Dec	Jan	Feb
# Hgb	90	86	86	82	84	86	86	87	81	80	82	74
# Hgb >= 12	5	4	3	0	3	3	0	4	7	0	3	3
Pop. Mean	10.8	10.7	10.7	10.4	10.6	10.7	10.6	10.8	10.8	10.5	10.8	10.9
Std. Deviation	1.2	1.2	1.1	1.1	1.1	1.0	0.9	1.2	1.1	1.0	1.0	1.0
% Hgb >= 12	6%	5%	3%	0%	4%	3%	0%	5%	9%	0%	4%	4%

Note: Excludes patients who received no ESA in month.



**Average Darbepoetin Dose per Week per Kilogram**

	Mar	Apr	May	Jun	Jul	Aug	Sep	Oct	Nov	Dec	Jan	Feb
# Average Darbepoetin	0	0	0	0	0	0	0	0	0	0	0	0

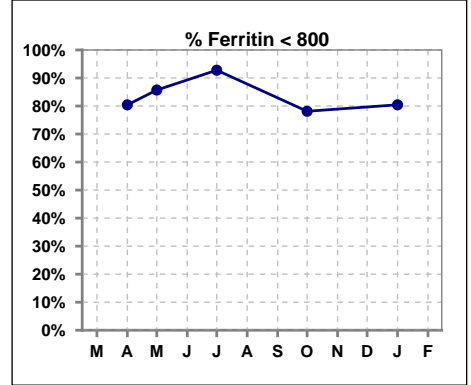




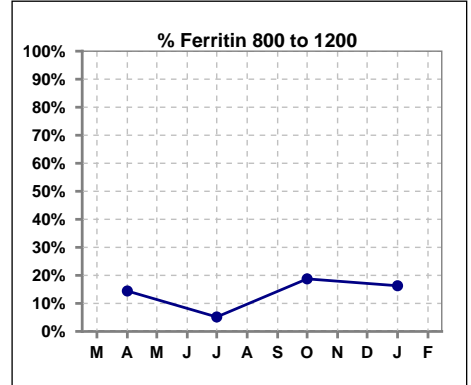
**V. ANEMIA - CONT.**

**Iron Profile**

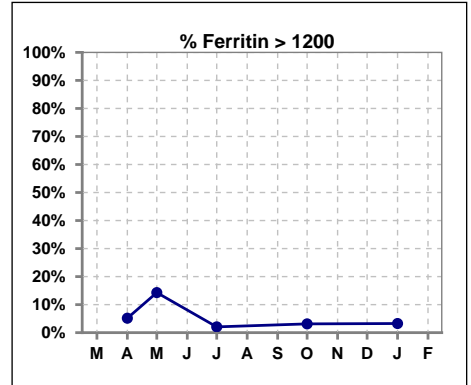
	Mar	Apr	May	Jun	Jul	Aug	Sep	Oct	Nov	Dec	Jan	Feb
# Ferritin		97	7		97			96			92	
# Ferritin < 800		78	6		90			75			74	
Pop. Mean		535	430		474			534			529	
Std. Deviation		325	401		262			335			325	
<b>% Ferritin &lt; 800</b>		<b>80%</b>	<b>86%</b>		<b>93%</b>			<b>78%</b>			<b>80%</b>	



	Mar	Apr	May	Jun	Jul	Aug	Sep	Oct	Nov	Dec	Jan	Feb
# Ferritin		97	7		97			96			92	
# Ferritin 800 to 1200		14			5			18			15	
Pop. Mean		535	430		474			534			529	
Std. Deviation		325	401		262			335			325	
<b>% Ferritin 800 to 1200</b>		<b>14%</b>			<b>5%</b>			<b>19%</b>			<b>16%</b>	

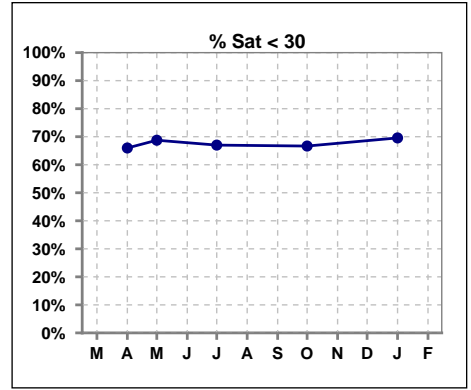


	Mar	Apr	May	Jun	Jul	Aug	Sep	Oct	Nov	Dec	Jan	Feb
# Ferritin		97	7		97			96			92	
# Ferritin > 1200		5	1		2			3			3	
Pop. Mean		535	430		474			534			529	
Std. Deviation		325	401		262			335			325	
<b>% Ferritin &gt; 1200</b>		<b>5%</b>	<b>14%</b>		<b>2%</b>			<b>3%</b>			<b>3%</b>	

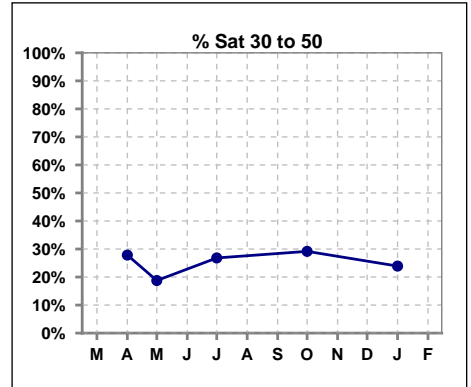


**V. ANEMIA - CONT.**

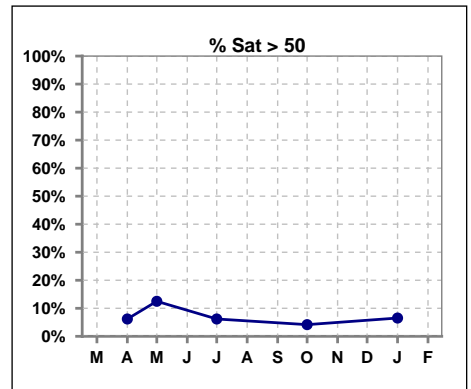
	Mar	Apr	May	Jun	Jul	Aug	Sep	Oct	Nov	Dec	Jan	Feb
# % Sat		97	16		97			96			92	
# % Sat < 30		64	11		65			64			64	
Pop. Mean		26	28		27			27			28	
Std. Deviation		12	14		12			11			15	
<b>% % Sat &lt; 30</b>		<b>66%</b>	<b>69%</b>		<b>67%</b>			<b>67%</b>			<b>70%</b>	



	Mar	Apr	May	Jun	Jul	Aug	Sep	Oct	Nov	Dec	Jan	Feb
# % Sat		97	16		97			96			92	
# % Sat 30 to 50		27	3		26			28			22	
Pop. Mean		26	28		27			27			28	
Std. Deviation		12	14		12			11			15	
<b>% % Sat 30 to 50</b>		<b>28%</b>	<b>19%</b>		<b>27%</b>			<b>29%</b>			<b>24%</b>	

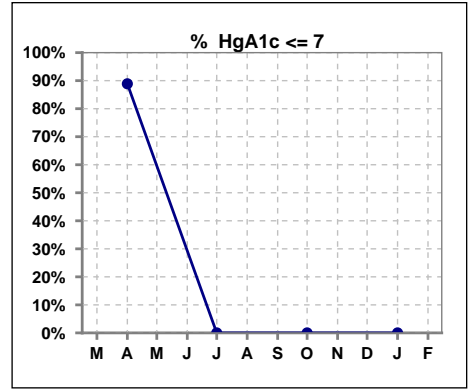


	Mar	Apr	May	Jun	Jul	Aug	Sep	Oct	Nov	Dec	Jan	Feb
# % Sat		97	16		97			96			92	
# % Sat > 50		6	2		6			4			6	
Pop. Mean		26	28		27			27			28	
Std. Deviation		12	14		12			11			15	
<b>% % Sat &gt; 50</b>		<b>6%</b>	<b>13%</b>		<b>6%</b>			<b>4%</b>			<b>7%</b>	



**VI. Diabetes**

	Mar	Apr	May	Jun	Jul	Aug	Sep	Oct	Nov	Dec	Jan	Feb
# HgA1c		54			0			0			0	
# HgA1c <= 7		48			0			0			0	
Pop. Mean		5.9			0			0			0	
Std. Deviation		1.12			0			0			0	
<b>% HgA1c &lt;= 7</b>		<b>89%</b>			<b>0%</b>			<b>0%</b>			<b>0%</b>	

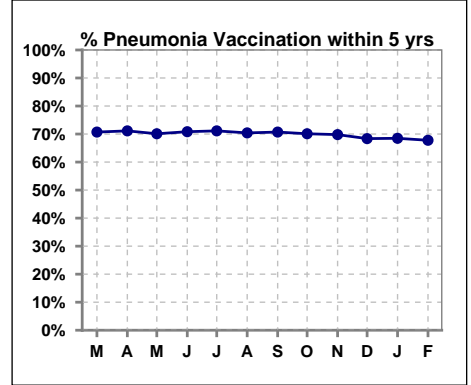


Methodology: a) All labs for 'Adequacy of Dialysis', 'Nutrition', 'Osteodystrophy', 'Anemia' and 'Diabetes' based on last value of month; b) BP's and #L processed are average of all values for month; c) Access data takes last access of month; d) Values for SGA and 'Infection Control' use most recent result.

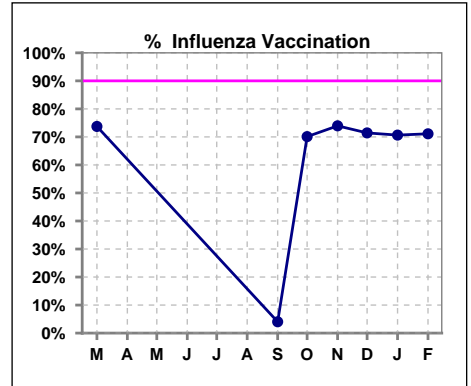
**VII. Infection Control**

**Pneumonia vaccination within the past five years**

	Mar	Apr	May	Jun	Jul	Aug	Sep	Oct	Nov	Dec	Jan	Feb
<b># Patient</b>	99	97	97	96	97	98	99	97	96	98	92	90
<b># Pneumonia</b>	70	69	68	68	69	69	70	68	67	67	63	61
<b>% Pneumonia</b>	71%	71%	70%	71%	71%	70%	71%	70%	70%	68%	68%	68%



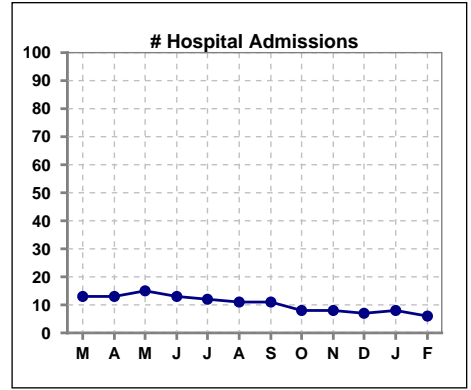
	Mar	Apr	May	Jun	Jul	Aug	Sep	Oct	Nov	Dec	Jan	Feb
<b># Patient</b>	99						99	97	96	98	92	90
<b># Influenza</b>	73						4	68	71	70	65	64
<b>% Influenza</b>	74%						4%	70%	74%	71%	71%	71%



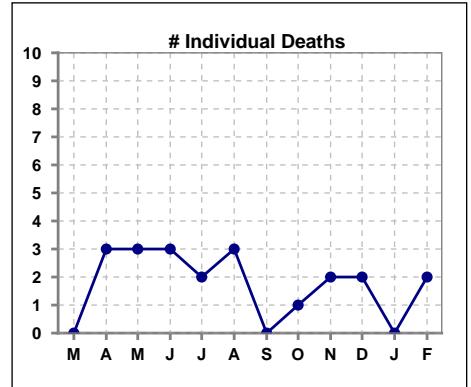
Methodology: a) All labs for 'Adequacy of Dialysis', 'Nutrition', 'Osteodystrophy', 'Anemia' and 'Diabetes' based on last value of month; b) BP's and #L processed are average of all values for month; c) Access data takes last access of month; d) Values for SGA and 'Infection Control' use most recent result.

**VIII. Outcome measures**

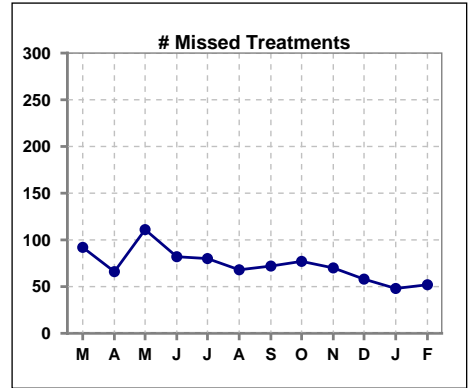
	Mar	Apr	May	Jun	Jul	Aug	Sep	Oct	Nov	Dec	Jan	Feb
# Patient	99	97	97	96	97	98	99	97	96	98	92	90
# Hospital Admissions	13	13	15	13	12	11	11	8	8	7	8	6



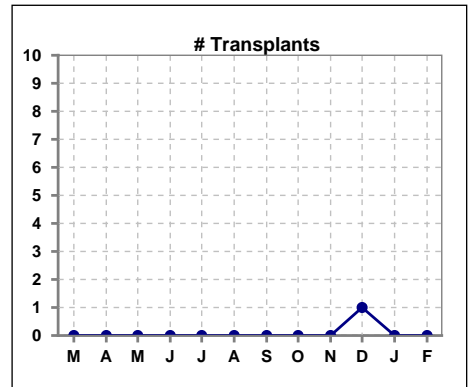
	Mar	Apr	May	Jun	Jul	Aug	Sep	Oct	Nov	Dec	Jan	Feb
# Patient	99	97	97	96	97	98	99	97	96	98	92	90
# Individual Deaths	0	3	3	3	2	3	0	1	2	2	0	2



	Mar	Apr	May	Jun	Jul	Aug	Sep	Oct	Nov	Dec	Jan	Feb
# Patient	99	97	97	96	97	98	99	97	96	98	92	90
# Missed Treatments	92	66	111	82	80	68	72	77	70	58	48	52



	Mar	Apr	May	Jun	Jul	Aug	Sep	Oct	Nov	Dec	Jan	Feb
# Patient	99	97	97	96	97	98	99	97	96	98	92	90
# Transplants	0	0	0	0	0	0	0	0	0	1	0	0



Methodology: a) All labs for 'Adequacy of Dialysis', 'Nutrition', 'Osteodystrophy', 'Anemia' and 'Diabetes' based on last value of month; b) BP's and #L processed are average of all values for month; c) Access data takes last access of month; d) Values for SGA and 'Infection Control' use most recent result.