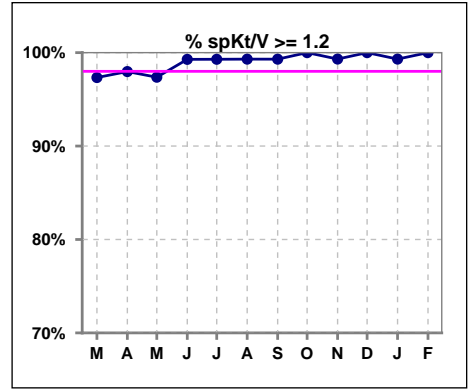
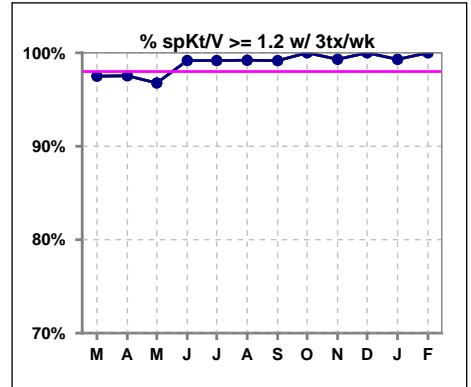


I. ADEQUACY OF DIALYSIS

	Mar	Apr	May	Jun	Jul	Aug	Sep	Oct	Nov	Dec	Jan	Feb
# spKt/V	150	148	152	139	141	144	143	145	146	147	145	145
# spKt/V >= 1.2	146	145	148	138	140	143	142	145	145	147	144	145
Pop. Mean	1.68	1.62	1.64	1.61	1.64	1.63	1.64	1.59	1.64	1.65	1.62	1.64
Std. Deviation	0.33	0.32	0.33	0.30	0.29	0.32	0.35	0.29	0.35	0.31	0.28	0.30
% spKt/V >= 1.2	97%	98%	97%	99%	99%	99%	99%	100%	99%	100%	99%	100%

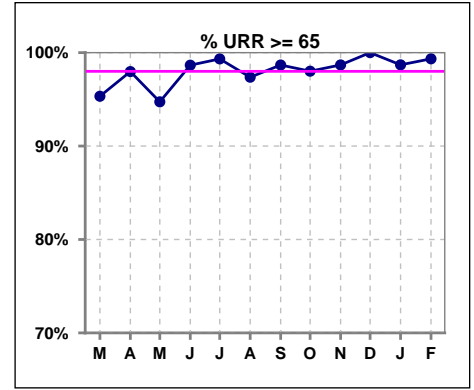


	Mar	Apr	May	Jun	Jul	Aug	Sep	Oct	Nov	Dec	Jan	Feb
# spKt/V w/ 3tx/wk	120	122	124	121	121	126	120	144	145	145	143	144
# spKt/V >= 1.2 w/3tx/wk	117	119	120	120	120	125	119	144	144	145	142	144
Pop. Mean	1.69	1.62	1.63	1.62	1.65	1.63	1.64	1.59	1.64	1.64	1.62	1.64
Std. Deviation	0.35	0.33	0.35	0.31	0.30	0.32	0.37	0.29	0.35	0.30	0.28	0.30
% >= 1.2 w/3tx/wk	98%	98%	97%	99%	99%	99%	99%	100%	99%	100%	99%	100%

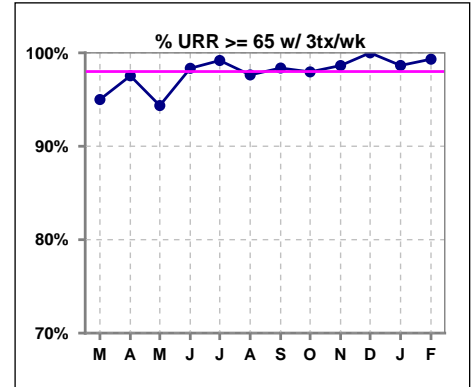


I. ADEQUACY OF DIALYSIS - CONT.

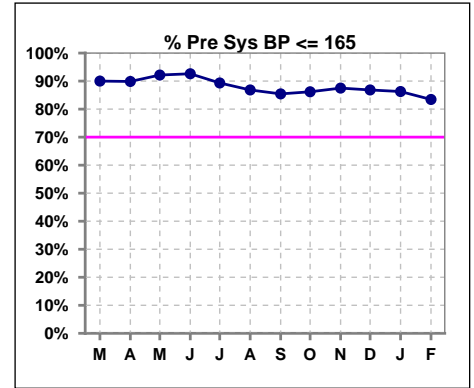
	Mar	Apr	May	Jun	Jul	Aug	Sep	Oct	Nov	Dec	Jan	Feb
# URR	150	148	152	149	149	152	151	151	152	152	153	151
# URR >= 65	143	145	144	147	148	148	149	148	150	152	151	150
Pop. Mean	76	74	75	75	75	75	75	75	75	76	75	75
Std. Deviation	6.41	6.73	6.52	5.69	5.49	6.19	6.02	5.89	6.32	5.61	5.42	5.87
% URR >= 65	95%	98%	95%	99%	99%	97%	99%	98%	99%	100%	99%	99%



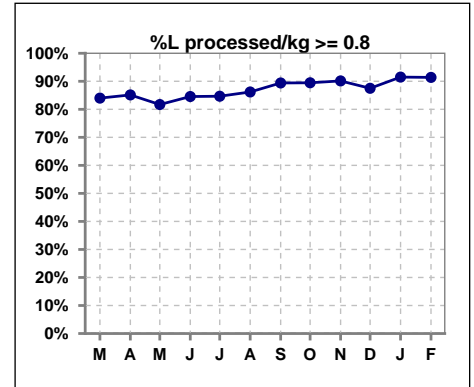
	Mar	Apr	May	Jun	Jul	Aug	Sep	Oct	Nov	Dec	Jan	Feb
# URR w/ 3tx/wk	120	122	124	121	122	127	123	147	147	147	148	147
# URR>=65 w/ 3tx/wk	114	119	117	119	121	124	121	144	145	147	146	146
Pop. Mean	76	74	75	75	76	75	75	74	75	75	75	75
Std. Deviation	6.65	6.97	6.82	5.96	5.55	6.13	6.18	5.82	6.32	5.59	5.39	5.88
% URR>=65 w/ 3tx/wk	95%	98%	94%	98%	99%	98%	98%	98%	99%	100%	99%	99%



	Mar	Apr	May	Jun	Jul	Aug	Sep	Oct	Nov	Dec	Jan	Feb
# Pre Sys BP	150	148	153	149	150	152	151	152	152	152	153	151
# Pre Sys BP <= 165	136	134	141	139	137	133	129	132	134	132	132	127
Pop. Mean	144	144	142	141	141	144	144	145	146	147	147	146
Std. Deviation	19.1	17.0	19.3	19.0	18.9	19.6	20.4	20.1	20.3	19.7	19.5	20.9
% Pre Sys BP <=165	90%	90%	92%	93%	89%	87%	85%	86%	88%	87%	86%	83%



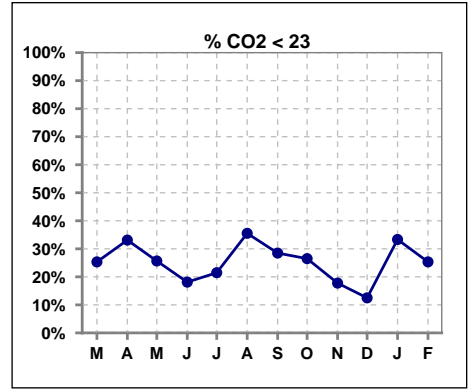
	Mar	Apr	May	Jun	Jul	Aug	Sep	Oct	Nov	Dec	Jan	Feb
# L processed/kg	150	148	153	149	150	152	151	152	152	152	153	151
# L processed/kg>=0.8	126	126	125	126	127	131	135	136	137	133	140	138
Pop. Mean	1	1	1	1	1	1	1	1	1	1	1	1
Std. Deviation	0.3	0.3	0.3	0.3	0.3	0.3	0.3	0.3	0.3	0.3	0.3	0.3
% L processed/kg>=0.8	84%	85%	82%	85%	85%	86%	89%	89%	90%	88%	92%	91%



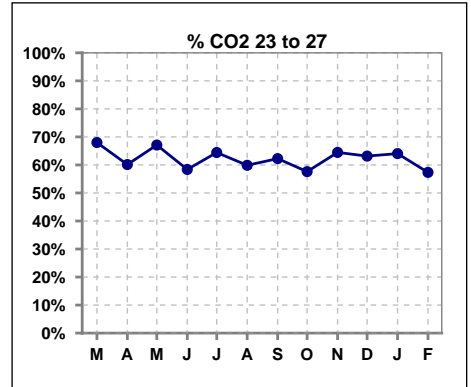
Methodology: a) All labs for 'Adequacy of Dialysis', 'Nutrition', 'Osteodystrophy', 'Anemia' and 'Diabetes' based on last value of month; b) BP's and #L processed are average of all values for month; c) Access data takes last access of month; d) Values for SGA and 'Infection Control' use most recent result.

I. ADEQUACY OF DIALYSIS - CONT.

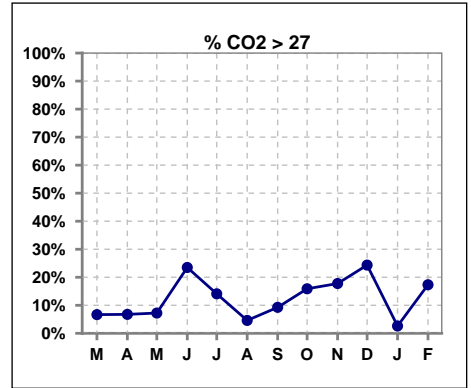
	Mar	Apr	May	Jun	Jul	Aug	Sep	Oct	Nov	Dec	Jan	Feb
# CO2	150	148	152	149	149	152	151	151	152	152	153	150
# CO2 < 23	38	49	39	27	32	54	43	40	27	19	51	38
Pop. Mean	24	23	24	25	25	23	24	24	25	25	23	25
Std. Deviation	2.54	2.92	2.74	3.13	2.98	2.94	2.93	3.16	3.19	2.80	2.64	3.32
% CO2 < 23	25%	33%	26%	18%	21%	36%	28%	26%	18%	13%	33%	25%



	Mar	Apr	May	Jun	Jul	Aug	Sep	Oct	Nov	Dec	Jan	Feb
# CO2	150	148	152	149	149	152	151	151	152	152	153	150
# CO2 23 to 27	102	89	102	87	96	91	94	87	98	96	98	86
Pop. Mean	24	23	24	25	25	23	24	24	25	25	23	25
Std. Deviation	2.54	2.92	2.74	3.13	2.98	2.94	2.93	3.16	3.19	2.80	2.64	3.32
% CO2 23 to 27	68%	60%	67%	58%	64%	60%	62%	58%	64%	63%	64%	57%



	Mar	Apr	May	Jun	Jul	Aug	Sep	Oct	Nov	Dec	Jan	Feb
# CO2	150	148	152	149	149	152	151	151	152	152	153	150
# CO2 > 27	10	10	11	35	21	7	14	24	27	37	4	26
Pop. Mean	24	23	24	25	25	23	24	24	25	25	23	25
Std. Deviation	2.54	2.92	2.74	3.13	2.98	2.94	2.93	3.16	3.19	2.80	2.64	3.32
% CO2 > 27	7%	7%	7%	23%	14%	5%	9%	16%	18%	24%	3%	17%

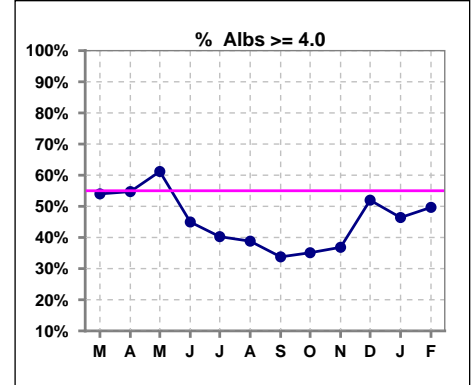


Methodology: a) All labs for 'Adequacy of Dialysis', 'Nutrition', 'Osteodystrophy', 'Anemia' and 'Diabetes' based on last value of month; b) BP's and #L processed are average of all values for month; c) Access data takes last access of month; d) Values for SGA and 'Infection Control' use most recent result.

*Albumin values use BCG method - as of July 2001

II. NUTRITION

	Mar	Apr	May	Jun	Jul	Aug	Sep	Oct	Nov	Dec	Jan	Feb
# Albumin	150	148	152	149	149	152	151	151	152	152	153	151
# Albumin >= 4.0	81	81	93	67	60	59	51	53	56	79	71	75
Pop. Mean	3.9	4.0	3.9	3.8	3.8	3.8	3.8	3.8	3.8	3.9	3.9	3.9
Std. Deviation	0.37	0.38	0.38	0.42	0.41	0.43	0.41	0.41	0.38	0.39	0.41	0.47
% Alb >= 4.0	54%	55%	61%	45%	40%	39%	34%	35%	37%	52%	46%	50%

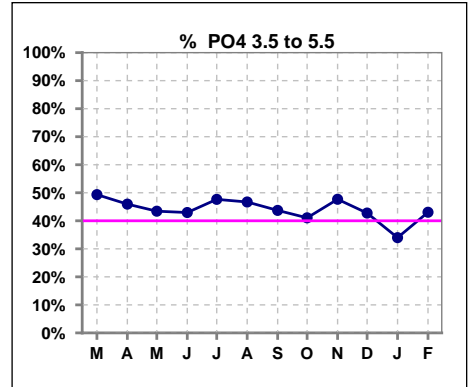


Methodology: a) All labs for 'Adequacy of Dialysis', 'Nutrition', 'Osteodystrophy', 'Anemia' and 'Diabetes' based on last value of month; b) BP's and #L processed are average of all values for month; c) Access data takes last access of month; d) Values for SGA and 'Infection Control' use most recent result.

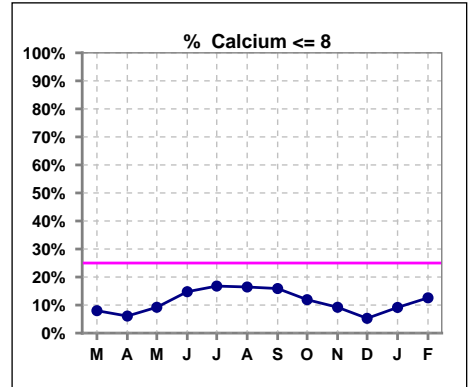
Lab methodology for PTH changed January 2012

III. OSTEODYSTROPHY

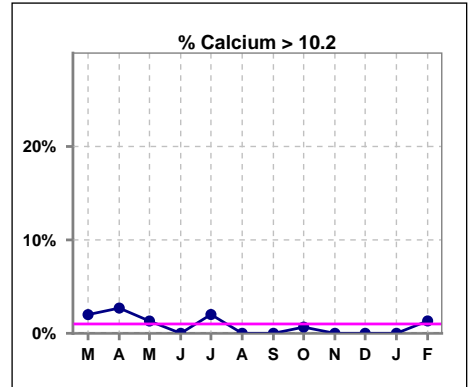
	Mar	Apr	May	Jun	Jul	Aug	Sep	Oct	Nov	Dec	Jan	Feb
# PO4	150	148	152	149	149	152	151	151	151	152	153	151
# PO4 3.5 to 5.5	74	68	66	64	71	71	66	62	72	65	52	65
Pop. Mean	5.7	5.7	5.7	5.9	5.8	5.5	5.7	5.6	5.7	5.9	5.8	5.8
Std. Deviation	1.91	1.89	1.90	1.99	1.87	1.68	1.71	1.76	1.69	1.80	1.66	1.83
% PO4 3.5 to 5.5	49%	46%	43%	43%	48%	47%	44%	41%	48%	43%	34%	43%



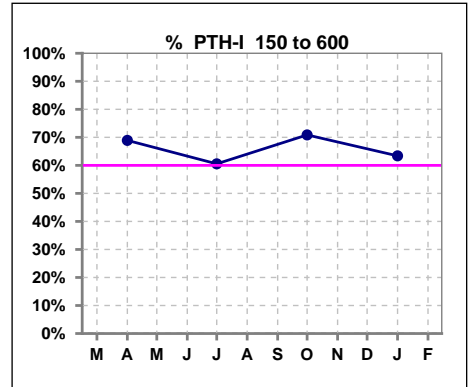
	Mar	Apr	May	Jun	Jul	Aug	Sep	Oct	Nov	Dec	Jan	Feb
# Calcium	150	148	152	149	149	152	151	151	152	152	153	151
# Calcium <= 8	12	9	14	22	25	25	24	18	14	8	14	19
Pop. Mean	9.0	9.0	9.0	8.8	8.8	8.7	8.7	8.8	8.9	9.0	8.9	9.0
Std. Deviation	0.73	0.67	0.71	0.67	0.76	0.71	0.70	0.63	0.66	0.63	0.74	0.80
% Calcium <= 8	8%	6%	9%	15%	17%	16%	16%	12%	9%	5%	9%	13%



	Mar	Apr	May	Jun	Jul	Aug	Sep	Oct	Nov	Dec	Jan	Feb
# Calcium	150	148	152	149	149	152	151	151	152	152	153	151
# Calcium > 10.2	3	4	2	0	3	0	0	1	0	0	0	2
Pop. Mean	9.0	9.0	9.0	8.8	8.8	8.7	8.7	8.8	8.9	9.0	8.9	9.0
Std. Deviation	0.73	0.67	0.71	0.67	0.76	0.71	0.70	0.63	0.66	0.63	0.74	0.80
% Calcium > 10.2	2%	3%	1%	0%	2%	0%	0%	1%	0%	0%	0%	1%



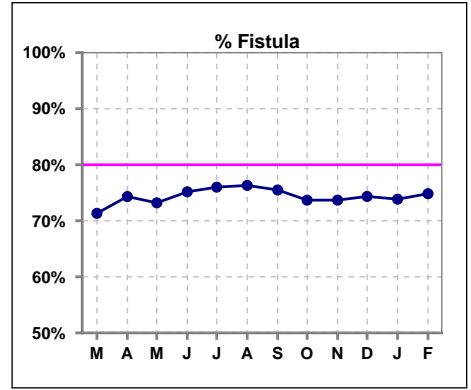
	Mar	Apr	May	Jun	Jul	Aug	Sep	Oct	Nov	Dec	Jan	Feb
# PTH-I		148			147			151			153	
# PTH-I 150 to 600		102			89			107			97	
Pop. Mean		438			532			458			458	
Std. Deviation		357			425			385			403	
% PTH-I 150 to 600		69%			61%			71%			63%	



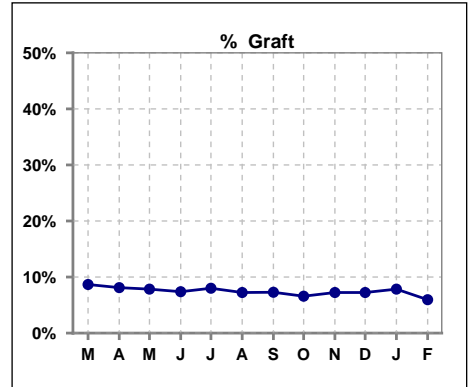
Methodology: a) All labs for 'Adequacy of Dialysis', 'Nutrition', 'Osteodystrophy', 'Anemia' and 'Diabetes' based on last value of month; b) BP's and #L processed are average of all values for month; c) Access data takes last access of month; d) Values for SGA and 'Infection Control' use most recent result.

IV. ACCESS

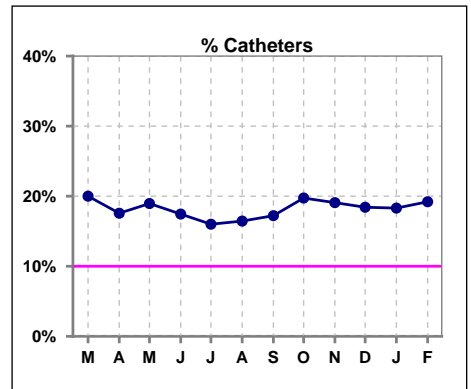
	Mar	Apr	May	Jun	Jul	Aug	Sep	Oct	Nov	Dec	Jan	Feb
# Access	150	148	153	149	150	152	151	152	152	152	153	151
# Fistula	107	110	112	112	114	116	114	112	112	113	113	113
% Fistula	71%	74%	73%	75%	76%	76%	75%	74%	74%	74%	74%	75%



	Mar	Apr	May	Jun	Jul	Aug	Sep	Oct	Nov	Dec	Jan	Feb
# Access	150	148	153	149	150	152	151	152	152	152	153	151
# Graft	13	12	12	11	12	11	11	10	11	11	12	9
% Graft	9%	8%	8%	7%	8%	7%	7%	7%	7%	7%	8%	6%



	Mar	Apr	May	Jun	Jul	Aug	Sep	Oct	Nov	Dec	Jan	Feb
# Access	150	148	153	149	150	152	151	152	152	152	153	151
# Catheters	30	26	29	26	24	25	26	30	29	28	28	29
% Catheters	20%	18%	19%	17%	16%	16%	17%	20%	19%	18%	18%	19%



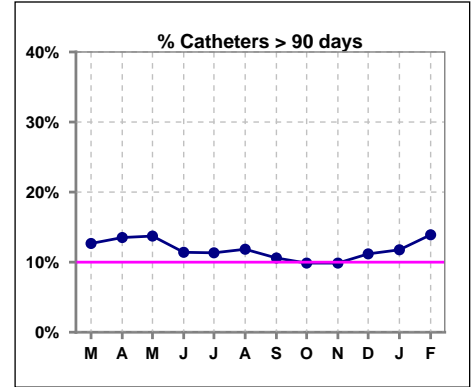
Methodology: a) All labs for 'Adequacy of Dialysis', 'Nutrition', 'Osteodystrophy', 'Anemia' and 'Diabetes' based on last value of month; b) BP's and #L processed are average of all values for month; c) Access data takes last access of month; d) Values for SGA and 'Infection Control' use most recent result.

IV. ACCESS - CONT.

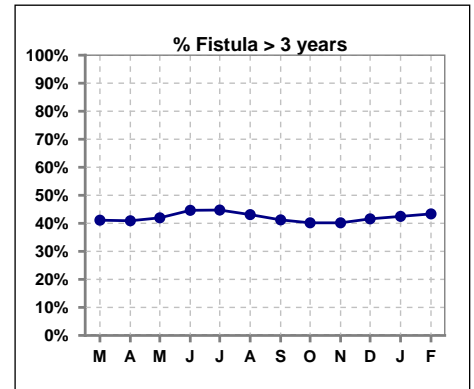
Catheters > 90 days

	Mar	Apr	May	Jun	Jul	Aug	Sep	Oct	Nov	Dec	Jan	Feb
# Access	150	148	153	149	150	152	151	152	152	152	153	151
# Catheters	19	20	21	17	17	18	16	15	15	17	18	21
% Catheters	13%	14%	14%	11%	11%	12%	11%	10%	10%	11%	12%	14%

Definition: Catheter in use on last treatment of the month



	Mar	Apr	May	Jun	Jul	Aug	Sep	Oct	Nov	Dec	Jan	Feb
# Fistula	107	110	112	112	114	116	114	112	112	113	113	113
# Fistula > 3 yrs	44	45	47	50	51	50	47	45	45	47	48	49
% Fistula > 3 yrs	41%	41%	42%	45%	45%	43%	41%	40%	40%	42%	42%	43%

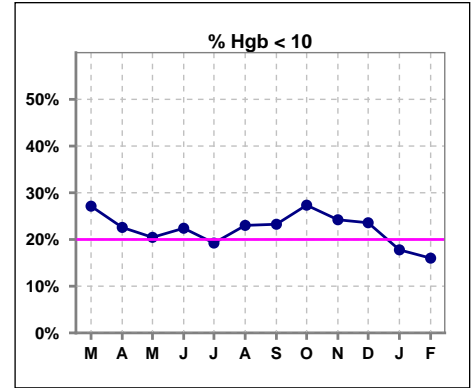


Methodology: a) All labs for 'Adequacy of Dialysis', 'Nutrition', 'Osteodystrophy', 'Anemia' and 'Diabetes' based on last value of month; b) BP's and #L processed are average of all values for month; c) Access data takes last access of month; d) Values for SGA and 'Infection Control' use most recent result.

V. ANEMIA

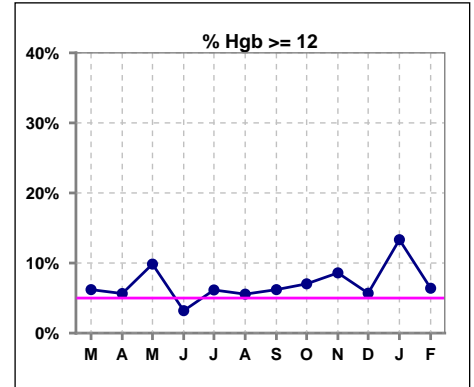
	Mar	Apr	May	Jun	Jul	Aug	Sep	Oct	Nov	Dec	Jan	Feb
# Hgb	129	124	132	125	130	126	129	128	128	123	135	125
# Hgb < 10	35	28	27	28	25	29	30	35	31	29	24	20
Pop. Mean	10.6	10.7	10.8	10.6	10.9	10.6	10.6	10.5	10.6	10.6	10.9	10.8
Std. Deviation	1.2	1.1	1.3	1.4	1.2	1.4	1.3	1.3	1.2	1.1	1.1	1.1
% Hgb < 10	27%	23%	20%	22%	19%	23%	23%	27%	24%	24%	18%	16%

Note: Excludes patients who received no ESA in month.



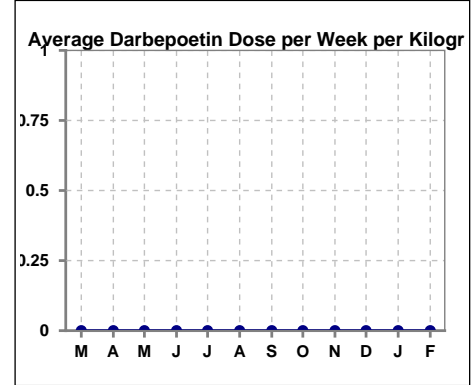
	Mar	Apr	May	Jun	Jul	Aug	Sep	Oct	Nov	Dec	Jan	Feb
# Hgb	129	124	132	125	130	126	129	128	128	123	135	125
# Hgb >= 12	8	7	13	4	8	7	8	9	11	7	18	8
Pop. Mean	10.6	10.7	10.8	10.6	10.9	10.6	10.6	10.5	10.6	10.6	10.9	10.8
Std. Deviation	1.2	1.1	1.3	1.4	1.2	1.4	1.3	1.3	1.2	1.1	1.1	1.1
% Hgb >= 12	6%	6%	10%	3%	6%	6%	6%	7%	9%	6%	13%	6%

Note: Excludes patients who received no ESA in month.



Average Darbepoetin Dose per Week per Kilogram

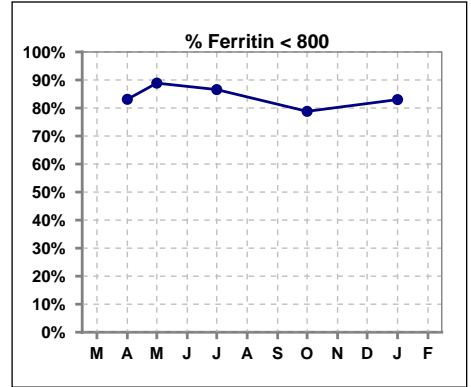
	Mar	Apr	May	Jun	Jul	Aug	Sep	Oct	Nov	Dec	Jan	Feb
# Average Darbepoetin	0	0	0	0	0	0	0	0	0	0	0	0



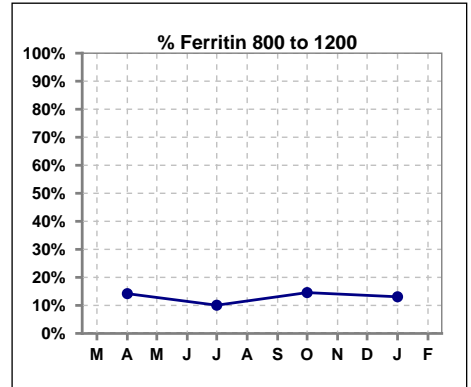
V. ANEMIA - CONT.

Iron Profile

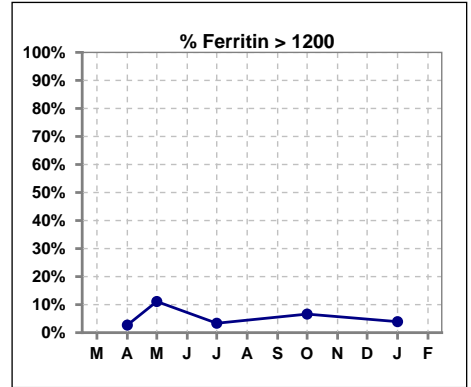
	Mar	Apr	May	Jun	Jul	Aug	Sep	Oct	Nov	Dec	Jan	Feb
# Ferritin		148	9		149			151			153	
# Ferritin < 800		123	8		129			119			127	
Pop. Mean		491	493		464			527			488	
Std. Deviation		330	829		319			364			344	
% Ferritin < 800		83%	89%		87%			79%			83%	



	Mar	Apr	May	Jun	Jul	Aug	Sep	Oct	Nov	Dec	Jan	Feb
# Ferritin		148	9		149			151			153	
# Ferritin 800 to 1200		21			15			22			20	
Pop. Mean		491	493		464			527			488	
Std. Deviation		330	829		319			364			344	
% Ferritin 800 to 1200		14%			10%			15%			13%	



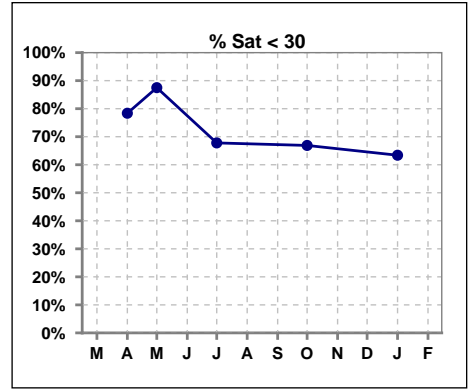
	Mar	Apr	May	Jun	Jul	Aug	Sep	Oct	Nov	Dec	Jan	Feb
# Ferritin		148	9		149			151			153	
# Ferritin > 1200		4	1		5			10			6	
Pop. Mean		491	493		464			527			488	
Std. Deviation		330	829		319			364			344	
% Ferritin > 1200		3%	11%		3%			7%			4%	



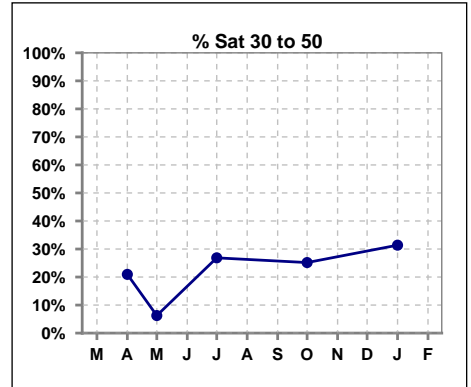
Methodology: a) All labs for 'Adequacy of Dialysis', 'Nutrition', 'Osteodystrophy', 'Anemia' and 'Diabetes' based on last value of month; b) BP's and #L processed are average of all values for month; c) Access data takes last access of month; d) Values for SGA and 'Infection Control' use most recent result.

V. ANEMIA - CONT.

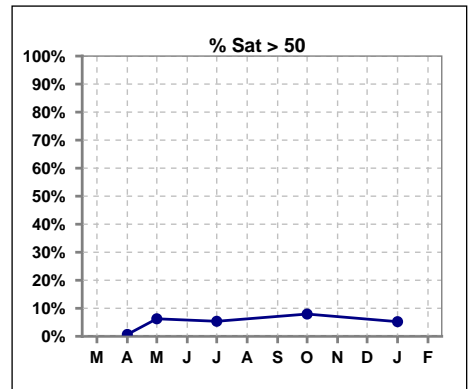
	Mar	Apr	May	Jun	Jul	Aug	Sep	Oct	Nov	Dec	Jan	Feb
# % Sat		148	16		149			151			153	
# % Sat < 30		116	14		101			101			97	
Pop. Mean		24	24		28			28			28	
Std. Deviation		9	13		14			15			13	
% % Sat < 30		78%	88%		68%			67%			63%	



	Mar	Apr	May	Jun	Jul	Aug	Sep	Oct	Nov	Dec	Jan	Feb
# % Sat		148	16		149			151			153	
# % Sat 30 to 50		31	1		40			38			48	
Pop. Mean		24	24		28			28			28	
Std. Deviation		9	13		14			15			13	
% % Sat 30 to 50		21%	6%		27%			25%			31%	



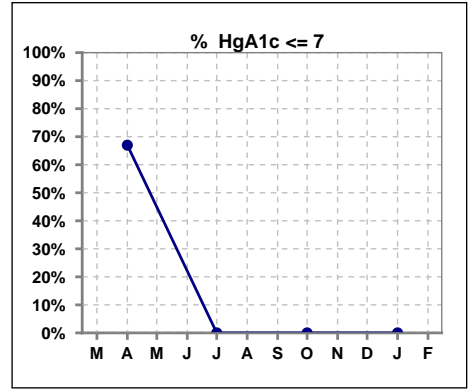
	Mar	Apr	May	Jun	Jul	Aug	Sep	Oct	Nov	Dec	Jan	Feb
# % Sat		148	16		149			151			153	
# % Sat > 50		1	1		8			12			8	
Pop. Mean		24	24		28			28			28	
Std. Deviation		9	13		14			15			13	
% % Sat > 50		1%	6%		5%			8%			5%	



Methodology: a) All labs for 'Adequacy of Dialysis', 'Nutrition', 'Osteodystrophy', 'Anemia' and 'Diabetes' based on last value of month; b) BP's and #L processed are average of all values for month; c) Access data takes last access of month; d) Values for SGA and 'Infection Control' use most recent result.

VI. Diabetes

	Mar	Apr	May	Jun	Jul	Aug	Sep	Oct	Nov	Dec	Jan	Feb
# HgA1c		103			0			0			0	
# HgA1c <= 7		69			0			0			0	
Pop. Mean		6.6			0			0			0	
Std. Deviation		1.55			0			0			0	
% HgA1c <= 7		67%			0%			0%			0%	

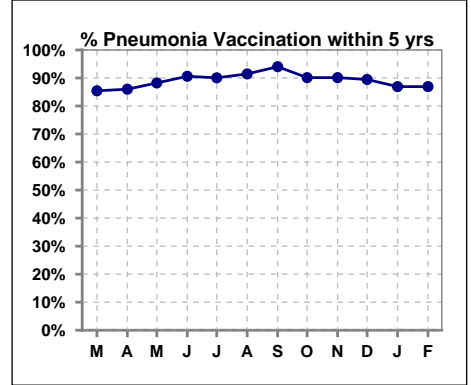


Methodology: a) All labs for 'Adequacy of Dialysis', 'Nutrition', 'Osteodystrophy', 'Anemia' and 'Diabetes' based on last value of month; b) BP's and #L processed are average of all values for month; c) Access data takes last access of month; d) Values for SGA and 'Infection Control' use most recent result.

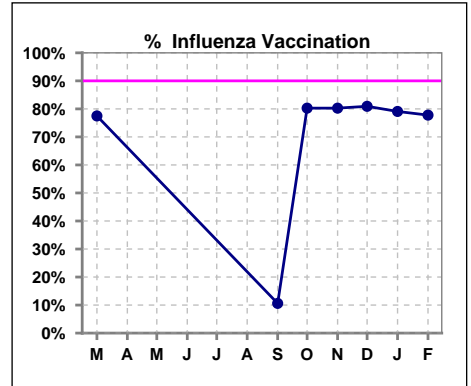
VII. Infection Control

Pneumonia vaccination within the past five years

	Mar	Apr	May	Jun	Jul	Aug	Sep	Oct	Nov	Dec	Jan	Feb
# Patient	151	150	153	149	151	152	151	152	152	152	153	153
# Pneumonia	129	129	135	135	136	139	142	137	137	136	133	133
% Pneumonia	85%	86%	88%	91%	90%	91%	94%	90%	90%	89%	87%	87%



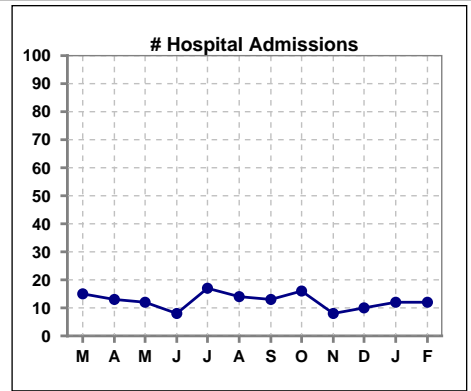
	Mar	Apr	May	Jun	Jul	Aug	Sep	Oct	Nov	Dec	Jan	Feb
# Patient	151						151	152	152	152	153	153
# Influenza	117						16	122	122	123	121	119
% Influenza	77%						11%	80%	80%	81%	79%	78%



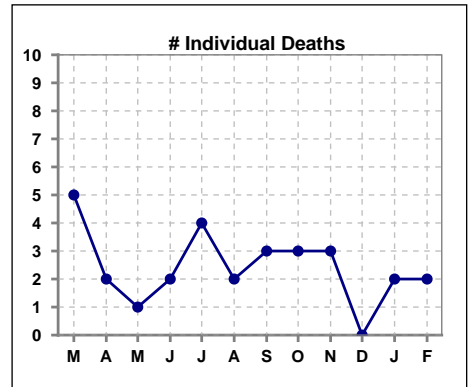
Methodology: a) All labs for 'Adequacy of Dialysis', 'Nutrition', 'Osteodystrophy', 'Anemia' and 'Diabetes' based on last value of month; b) BP's and #L processed are average of all values for month; c) Access data takes last access of month; d) Values for SGA and 'Infection Control' use most recent result.

VIII. Outcome measures

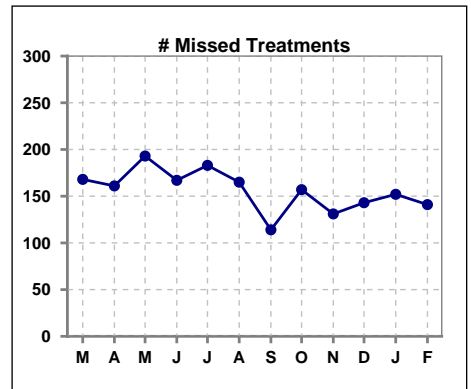
	Mar	Apr	May	Jun	Jul	Aug	Sep	Oct	Nov	Dec	Jan	Feb
# Patient	151	150	153	149	151	152	151	152	152	152	153	153
# Hospital Admissions	15	13	12	8	17	14	13	16	8	10	12	12



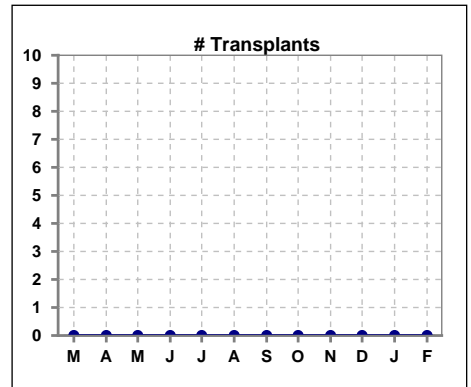
	Mar	Apr	May	Jun	Jul	Aug	Sep	Oct	Nov	Dec	Jan	Feb
# Patient	151	150	153	149	151	152	151	152	152	152	153	153
# Individual Deaths	5	2	1	2	4	2	3	3	3	0	2	2



	Mar	Apr	May	Jun	Jul	Aug	Sep	Oct	Nov	Dec	Jan	Feb
# Patient	151	150	153	149	151	152	151	152	152	152	153	153
# Missed Treatments	168	161	193	167	183	165	114	157	131	143	152	141



	Mar	Apr	May	Jun	Jul	Aug	Sep	Oct	Nov	Dec	Jan	Feb
# Patient	151	150	153	149	151	152	151	152	152	152	153	153
# Transplants	0	0	0	0	0	0	0	0	0	0	0	0



Methodology: a) All labs for 'Adequacy of Dialysis', 'Nutrition', 'Osteodystrophy', 'Anemia' and 'Diabetes' based on last value of month; b) BP's and #L processed are average of all values for month; c) Access data takes last access of month; d) Values for SGA and 'Infection Control' use most recent result.