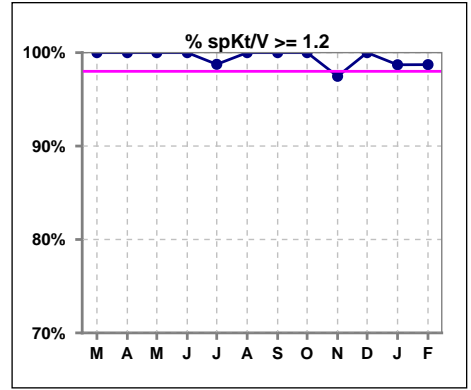
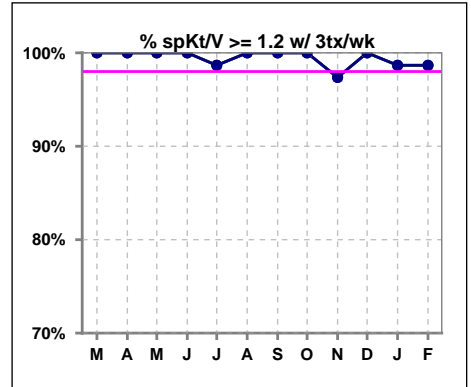


I. ADEQUACY OF DIALYSIS

	Mar	Apr	May	Jun	Jul	Aug	Sep	Oct	Nov	Dec	Jan	Feb
# spKt/V	78	77	76	80	80	80	82	78	79	77	77	78
# spKt/V >= 1.2	78	77	76	80	79	80	82	78	77	77	76	77
Pop. Mean	1.68	1.62	1.63	1.57	1.56	1.56	1.56	1.61	1.59	1.55	1.57	1.60
Std. Deviation	0.27	0.32	0.35	0.27	0.26	0.25	0.27	0.25	0.35	0.25	0.24	0.24
% spKt/V >= 1.2	100%	100%	100%	100%	99%	100%	100%	100%	97%	100%	99%	99%

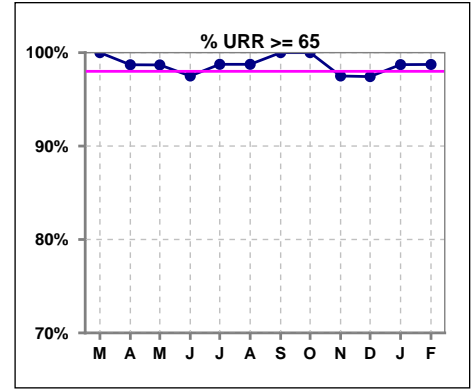


	Mar	Apr	May	Jun	Jul	Aug	Sep	Oct	Nov	Dec	Jan	Feb
# spKt/V w/ 3tx/wk	74	73	71	76	75	75	78	75	76	74	75	75
# spKt/V >= 1.2 w/3tx/wk	74	73	71	76	74	75	78	75	74	74	74	74
Pop. Mean	1.70	1.63	1.65	1.58	1.58	1.57	1.57	1.61	1.59	1.56	1.57	1.60
Std. Deviation	0.27	0.32	0.35	0.28	0.26	0.25	0.27	0.25	0.35	0.25	0.24	0.24
% >= 1.2 w/3tx/wk	100%	100%	100%	100%	99%	100%	100%	100%	97%	100%	99%	99%

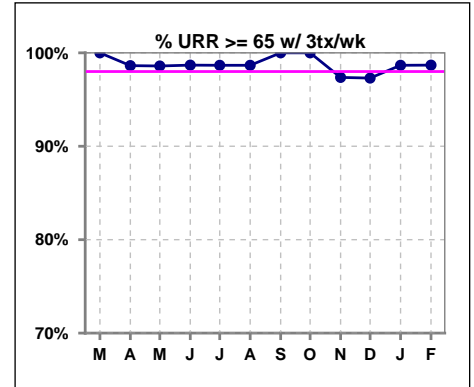


I. ADEQUACY OF DIALYSIS - CONT.

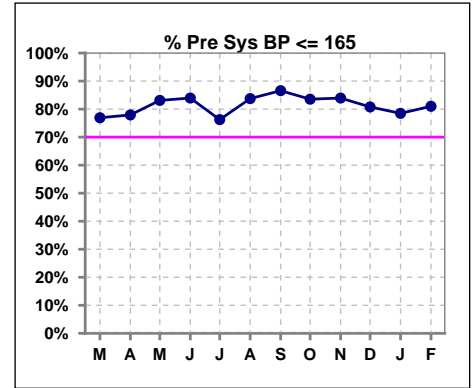
	Mar	Apr	May	Jun	Jul	Aug	Sep	Oct	Nov	Dec	Jan	Feb
# URR	78	77	76	80	80	80	82	79	80	78	78	79
# URR >= 65	78	76	75	78	79	79	82	79	78	76	77	78
Pop. Mean	76	75	75	74	74	74	74	75	75	74	74	75
Std. Deviation	4.99	5.76	5.89	5.47	5.59	5.14	5.25	4.95	5.69	5.33	5.30	5.06
% URR >= 65	100%	99%	99%	98%	99%	99%	100%	100%	98%	97%	99%	99%



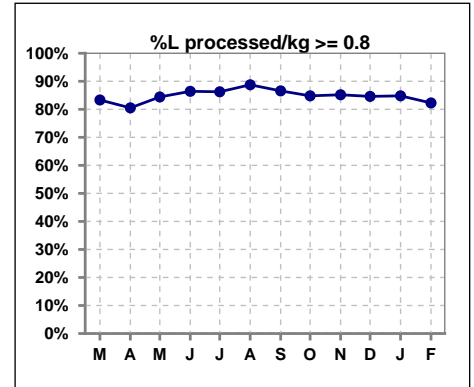
	Mar	Apr	May	Jun	Jul	Aug	Sep	Oct	Nov	Dec	Jan	Feb
# URR w/ 3tx/wk	74	73	71	76	75	75	78	75	76	74	75	76
# URR>=65 w/ 3tx/wk	74	72	70	75	74	74	78	75	74	72	74	75
Pop. Mean	77	75	75	75	75	74	74	75	75	74	74	75
Std. Deviation	4.83	5.73	5.76	5.37	5.60	5.10	5.19	4.90	5.79	5.23	5.34	5.07
% URR>=65 w/ 3tx/wk	100%	99%	99%	99%	99%	99%	100%	100%	97%	97%	99%	99%



	Mar	Apr	May	Jun	Jul	Aug	Sep	Oct	Nov	Dec	Jan	Feb
# Pre Sys BP	78	77	77	81	80	80	82	79	81	78	79	79
# Pre Sys BP <= 165	61	60	65	69	61	68	72	67	68	63	62	64
Pop. Mean	148	146	146	144	145	144	144	144	146	145	145	146
Std. Deviation	23.3	21.0	20.0	21.5	23.0	21.3	18.9	20.3	22.2	21.1	20.1	20.2
% Pre Sys BP <=165	77%	78%	83%	84%	76%	84%	87%	84%	84%	81%	78%	81%



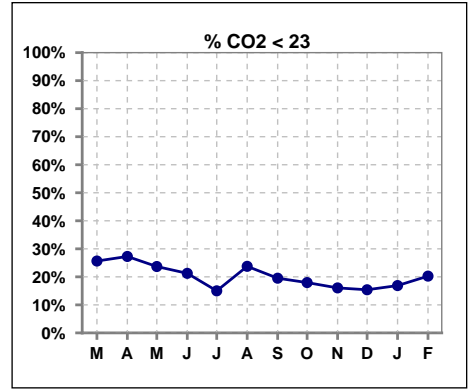
	Mar	Apr	May	Jun	Jul	Aug	Sep	Oct	Nov	Dec	Jan	Feb
# L processed/kg	78	77	77	81	80	80	82	79	81	78	79	79
# L processed/kg>=0.8	65	62	65	70	69	71	71	67	69	66	67	65
Pop. Mean	1	1	1	1	1	1	1	1	1	1	1	1
Std. Deviation	0.3	0.3	0.2	0.3	0.3	0.3	0.3	0.3	0.3	0.2	0.3	0.3
% L processed/kg>=0.8	83%	81%	84%	86%	86%	89%	87%	85%	85%	85%	85%	82%



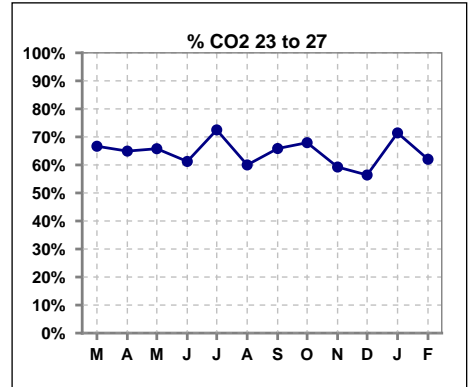
Methodology: a) All labs for 'Adequacy of Dialysis', 'Nutrition', 'Osteodystrophy', 'Anemia' and 'Diabetes' based on last value of month; b) BP's and #L processed are average of all values for month; c) Access data takes last access of month; d) Values for SGA and 'Infection Control' use most recent result.

I. ADEQUACY OF DIALYSIS - CONT.

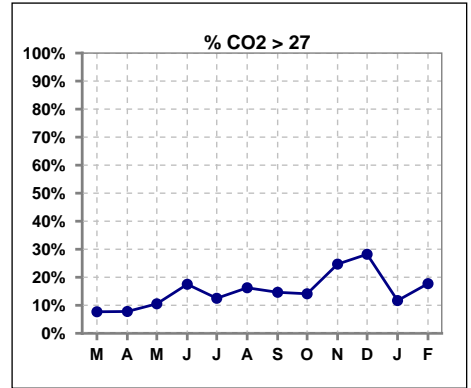
	Mar	Apr	May	Jun	Jul	Aug	Sep	Oct	Nov	Dec	Jan	Feb
# CO2	78	77	76	80	80	80	82	78	81	78	77	79
# CO2 < 23	20	21	18	17	12	19	16	14	13	12	13	16
Pop. Mean	24	24	24	25	25	24	25	24	25	26	25	25
Std. Deviation	2.75	2.97	2.77	2.84	3.07	3.56	3.31	3.40	3.44	3.34	2.70	2.87
% CO2 < 23	26%	27%	24%	21%	15%	24%	20%	18%	16%	15%	17%	20%



	Mar	Apr	May	Jun	Jul	Aug	Sep	Oct	Nov	Dec	Jan	Feb
# CO2	78	77	76	80	80	80	82	78	81	78	77	79
# CO2 23 to 27	52	50	50	49	58	48	54	53	48	44	55	49
Pop. Mean	24	24	24	25	25	24	25	24	25	26	25	25
Std. Deviation	2.75	2.97	2.77	2.84	3.07	3.56	3.31	3.40	3.44	3.34	2.70	2.87
% CO2 23 to 27	67%	65%	66%	61%	73%	60%	66%	68%	59%	56%	71%	62%



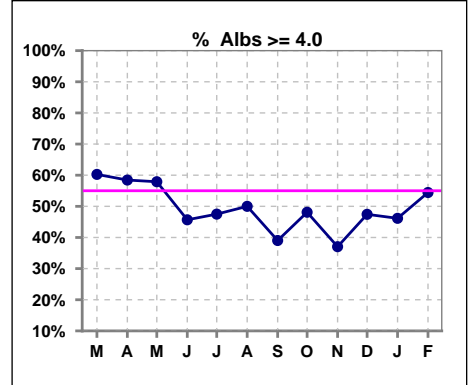
	Mar	Apr	May	Jun	Jul	Aug	Sep	Oct	Nov	Dec	Jan	Feb
# CO2	78	77	76	80	80	80	82	78	81	78	77	79
# CO2 > 27	6	6	8	14	10	13	12	11	20	22	9	14
Pop. Mean	24	24	24	25	25	24	25	24	25	26	25	25
Std. Deviation	2.75	2.97	2.77	2.84	3.07	3.56	3.31	3.40	3.44	3.34	2.70	2.87
% CO2 > 27	8%	8%	11%	18%	13%	16%	15%	14%	25%	28%	12%	18%



*Albumin values use BCG method - as of July 2001

II. NUTRITION

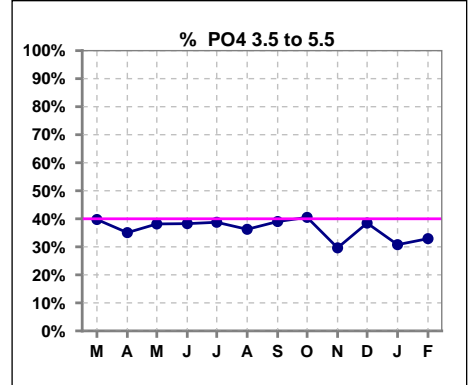
	Mar	Apr	May	Jun	Jul	Aug	Sep	Oct	Nov	Dec	Jan	Feb
# Albumin	78	77	76	81	80	80	82	79	81	78	78	79
# Albumin >= 4.0	47	45	44	37	38	40	32	38	30	37	36	43
Pop. Mean	4.0	4.0	4.0	3.9	3.9	3.9	3.9	3.9	3.8	3.9	3.9	4.0
Std. Deviation	0.34	0.34	0.34	0.36	0.37	0.33	0.32	0.37	0.39	0.41	0.33	0.40
% Alb >= 4.0	60%	58%	58%	46%	48%	50%	39%	48%	37%	47%	46%	54%



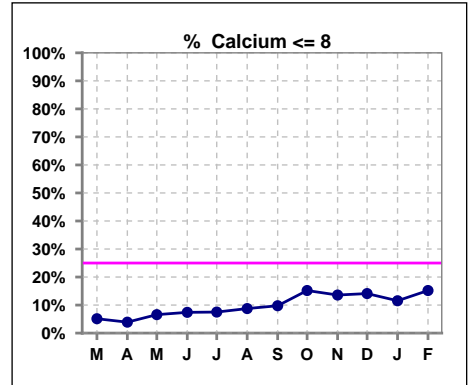
Lab methodology for PTH changed January 2012

III. OSTEODYSTROPHY

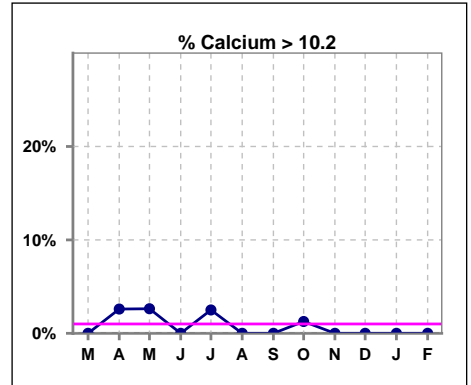
	Mar	Apr	May	Jun	Jul	Aug	Sep	Oct	Nov	Dec	Jan	Feb
# PO4	78	77	76	81	80	80	82	79	81	78	78	79
# PO4 3.5 to 5.5	31	27	29	31	31	29	32	32	24	30	24	26
Pop. Mean	5.9	5.9	6.0	6.4	6.2	6.0	5.9	6.0	6.3	6.3	6.4	6.5
Std. Deviation	2.10	2.01	1.98	2.21	1.89	1.77	1.73	1.83	1.74	1.91	2.22	2.23
% PO4 3.5 to 5.5	40%	35%	38%	38%	39%	36%	39%	41%	30%	38%	31%	33%



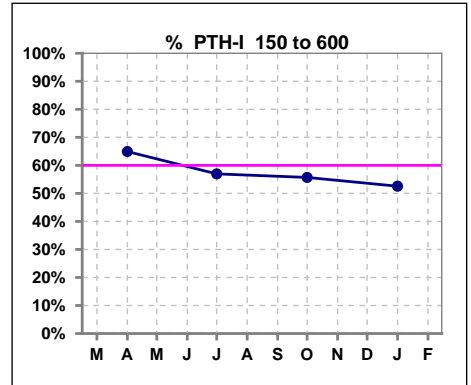
	Mar	Apr	May	Jun	Jul	Aug	Sep	Oct	Nov	Dec	Jan	Feb
# Calcium	78	77	76	81	80	80	82	79	81	78	78	79
# Calcium <= 8	4	3	5	6	6	7	8	12	11	11	9	12
Pop. Mean	9.2	9.2	9.2	9.1	9.1	9.0	8.9	8.9	8.9	8.9	8.9	9.1
Std. Deviation	0.65	0.65	0.65	0.68	0.68	0.67	0.79	0.76	0.79	0.80	0.74	0.76
% Calcium <= 8	5%	4%	7%	7%	8%	9%	10%	15%	14%	14%	12%	15%



	Mar	Apr	May	Jun	Jul	Aug	Sep	Oct	Nov	Dec	Jan	Feb
# Calcium	78	77	76	81	80	80	82	79	81	78	78	79
# Calcium > 10.2	0	2	2	0	2	0	0	1	0	0	0	0
Pop. Mean	9.2	9.2	9.2	9.1	9.1	9.0	8.9	8.9	8.9	8.9	8.9	9.1
Std. Deviation	0.65	0.65	0.65	0.68	0.68	0.67	0.79	0.76	0.79	0.80	0.74	0.76
% Calcium > 10.2	0%	3%	3%	0%	3%	0%	0%	1%	0%	0%	0%	0%



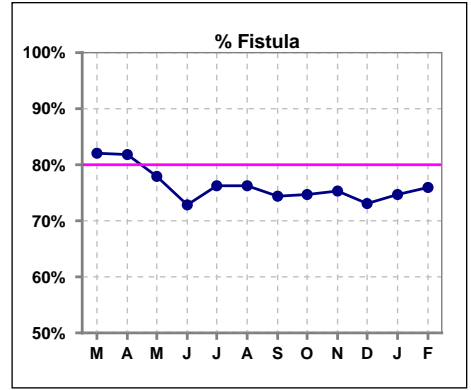
	Mar	Apr	May	Jun	Jul	Aug	Sep	Oct	Nov	Dec	Jan	Feb
# PTH-I		77			79			79			78	
# PTH-I 150 to 600		50			45			44			41	
Pop. Mean		497			603			538			591	
Std. Deviation		584			543			536			585	
% PTH-I 150 to 600		65%			57%			56%			53%	



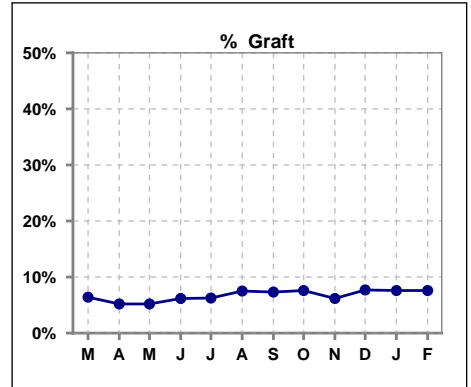
Methodology: a) All labs for 'Adequacy of Dialysis', 'Nutrition', 'Osteodystrophy', 'Anemia' and 'Diabetes' based on last value of month; b) BP's and #L processed are average of all values for month; c) Access data takes last access of month; d) Values for SGA and 'Infection Control' use most recent result.

IV. ACCESS

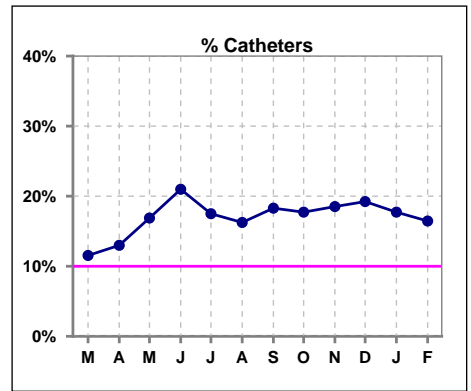
	Mar	Apr	May	Jun	Jul	Aug	Sep	Oct	Nov	Dec	Jan	Feb
# Access	78	77	77	81	80	80	82	79	81	78	79	79
# Fistula	64	63	60	59	61	61	61	59	61	57	59	60
% Fistula	82%	82%	78%	73%	76%	76%	74%	75%	75%	73%	75%	76%



	Mar	Apr	May	Jun	Jul	Aug	Sep	Oct	Nov	Dec	Jan	Feb
# Access	78	77	77	81	80	80	82	79	81	78	79	79
# Graft	5	4	4	5	5	6	6	6	5	6	6	6
% Graft	6%	5%	5%	6%	6%	8%	7%	8%	6%	8%	8%	8%



	Mar	Apr	May	Jun	Jul	Aug	Sep	Oct	Nov	Dec	Jan	Feb
# Access	78	77	77	81	80	80	82	79	81	78	79	79
# Catheters	9	10	13	17	14	13	15	14	15	15	14	13
% Catheters	12%	13%	17%	21%	18%	16%	18%	18%	19%	19%	18%	16%



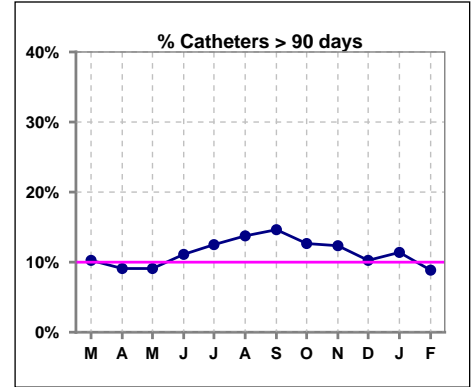
Methodology: a) All labs for 'Adequacy of Dialysis', 'Nutrition', 'Osteodystrophy', 'Anemia' and 'Diabetes' based on last value of month; b) BP's and #L processed are average of all values for month; c) Access data takes last access of month; d) Values for SGA and 'Infection Control' use most recent result.

IV. ACCESS - CONT.

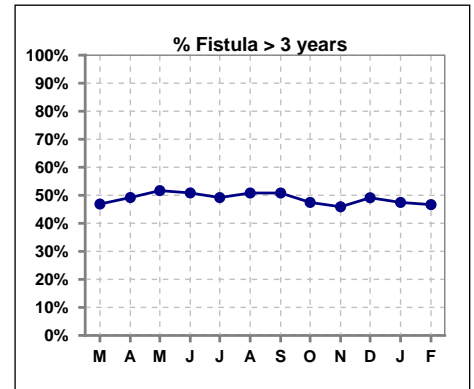
Catheters > 90 days

	Mar	Apr	May	Jun	Jul	Aug	Sep	Oct	Nov	Dec	Jan	Feb
# Access	78	77	77	81	80	80	82	79	81	78	79	79
# Catheters	8	7	7	9	10	11	12	10	10	8	9	7
% Catheters	10%	9%	9%	11%	13%	14%	15%	13%	12%	10%	11%	9%

Definition: Catheter in use on last treatment of the month



	Mar	Apr	May	Jun	Jul	Aug	Sep	Oct	Nov	Dec	Jan	Feb
# Fistula	64	63	60	59	61	61	61	59	61	57	59	60
# Fistula > 3 yrs	30	31	31	30	30	31	31	28	28	28	28	28
% Fistula > 3 yrs	47%	49%	52%	51%	49%	51%	51%	47%	46%	49%	47%	47%

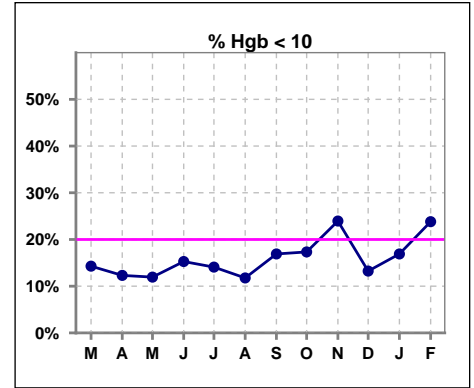


Methodology: a) All labs for 'Adequacy of Dialysis', 'Nutrition', 'Osteodystrophy', 'Anemia' and 'Diabetes' based on last value of month; b) BP's and #L processed are average of all values for month; c) Access data takes last access of month; d) Values for SGA and 'Infection Control' use most recent result.

V. ANEMIA

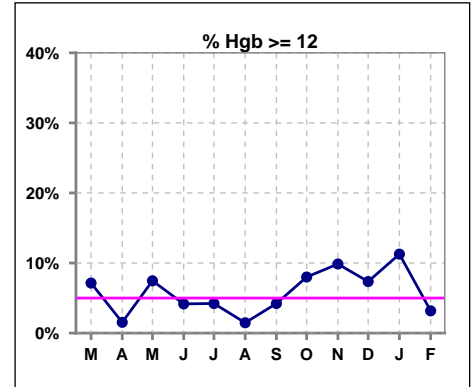
	Mar	Apr	May	Jun	Jul	Aug	Sep	Oct	Nov	Dec	Jan	Feb
# Hgb	70	65	67	72	71	68	71	75	71	68	71	63
# Hgb < 10	10	8	8	11	10	8	12	13	17	9	12	15
Pop. Mean	10.8	10.6	11.0	10.7	10.9	10.8	10.7	10.7	10.7	10.7	10.8	10.5
Std. Deviation	1.2	1.1	1.1	1.2	1.1	1.1	1.2	1.1	1.2	1.2	1.4	1.2
% Hgb < 10	14%	12%	12%	15%	14%	12%	17%	17%	24%	13%	17%	24%

Note: Excludes patients who received no ESA in month.



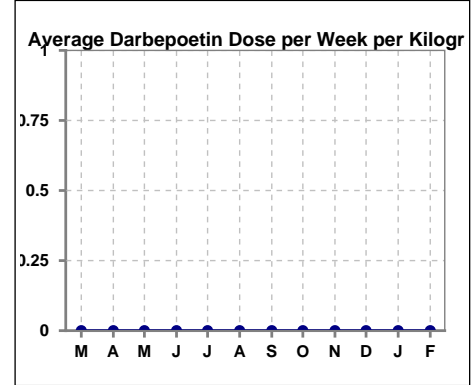
	Mar	Apr	May	Jun	Jul	Aug	Sep	Oct	Nov	Dec	Jan	Feb
# Hgb	70	65	67	72	71	68	71	75	71	68	71	63
# Hgb >= 12	5	1	5	3	3	1	3	6	7	5	8	2
Pop. Mean	10.8	10.6	11.0	10.7	10.9	10.8	10.7	10.7	10.7	10.7	10.8	10.5
Std. Deviation	1.2	1.1	1.1	1.2	1.1	1.1	1.2	1.1	1.2	1.2	1.4	1.2
% Hgb >= 12	7%	2%	7%	4%	4%	1%	4%	8%	10%	7%	11%	3%

Note: Excludes patients who received no ESA in month.



Average Darbepoetin Dose per Week per Kilogram

	Mar	Apr	May	Jun	Jul	Aug	Sep	Oct	Nov	Dec	Jan	Feb
# Average Darbepoetin	0	0	0	0	0	0	0	0	0	0	0	0

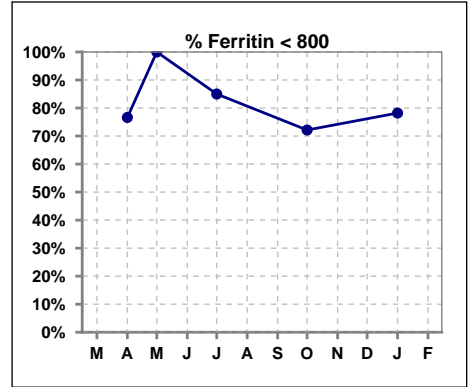


Methodology: a) All labs for 'Adequacy of Dialysis', 'Nutrition', 'Osteodystrophy', 'Anemia' and 'Diabetes' based on last value of month; b) BP's and #L processed are average of all values for month; c) Access data takes last access of month; d) Values for SGA and 'Infection Control' use most recent result.

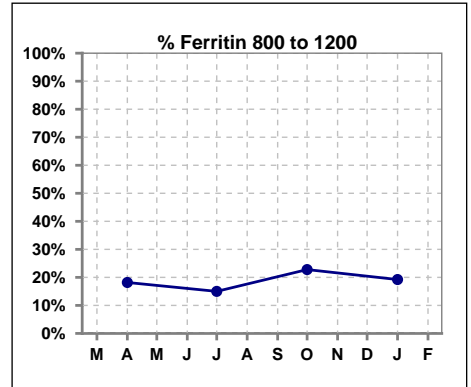
V. ANEMIA - CONT.

Iron Profile

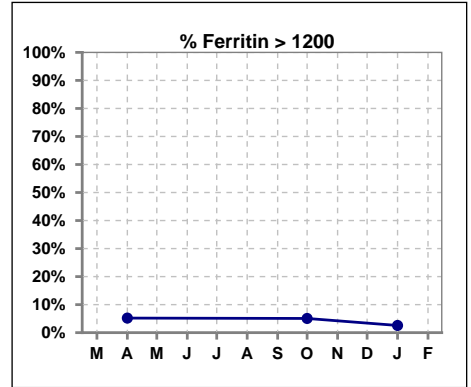
	Mar	Apr	May	Jun	Jul	Aug	Sep	Oct	Nov	Dec	Jan	Feb
# Ferritin		77	2		80			79			78	
# Ferritin < 800		59	2		68			57			61	
Pop. Mean		520	208		434			549			504	
Std. Deviation		375	111		309			352			390	
% Ferritin < 800		77%	100%		85%			72%			78%	



	Mar	Apr	May	Jun	Jul	Aug	Sep	Oct	Nov	Dec	Jan	Feb
# Ferritin		77	2		80			79			78	
# Ferritin 800 to 1200		14			12			18			15	
Pop. Mean		520	208		434			549			504	
Std. Deviation		375	111		309			352			390	
% Ferritin 800 to 1200		18%			15%			23%			19%	



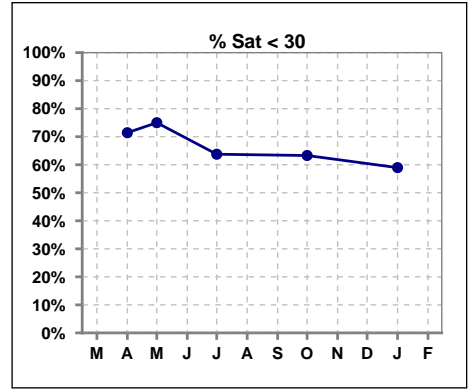
	Mar	Apr	May	Jun	Jul	Aug	Sep	Oct	Nov	Dec	Jan	Feb
# Ferritin		77	2		80			79			78	
# Ferritin > 1200		4						4			2	
Pop. Mean		520	208		434			549			504	
Std. Deviation		375	111		309			352			390	
% Ferritin > 1200		5%						5%			3%	



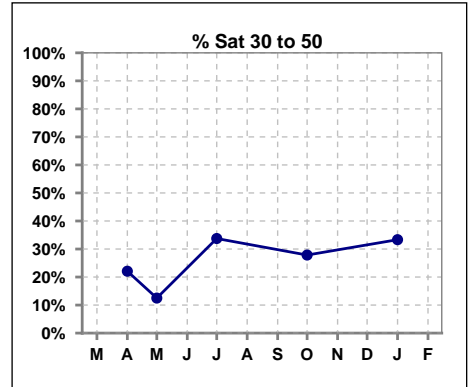
Methodology: a) All labs for 'Adequacy of Dialysis', 'Nutrition', 'Osteodystrophy', 'Anemia' and 'Diabetes' based on last value of month; b) BP's and #L processed are average of all values for month; c) Access data takes last access of month; d) Values for SGA and 'Infection Control' use most recent result.

V. ANEMIA - CONT.

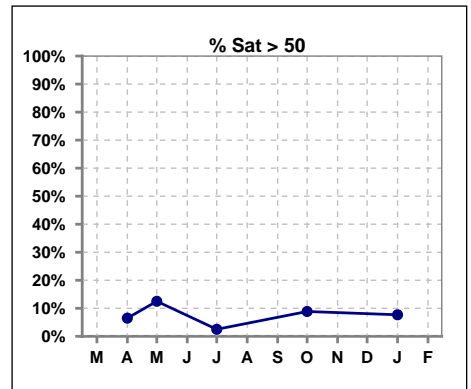
	Mar	Apr	May	Jun	Jul	Aug	Sep	Oct	Nov	Dec	Jan	Feb
# % Sat		77	8		80			79			78	
# % Sat < 30		55	6		51			50			46	
Pop. Mean		26	34		28			30			29	
Std. Deviation		16	29		12			16			15	
% % Sat < 30		71%	75%		64%			63%			59%	



	Mar	Apr	May	Jun	Jul	Aug	Sep	Oct	Nov	Dec	Jan	Feb
# % Sat		77	8		80			79			78	
# % Sat 30 to 50		17	1		27			22			26	
Pop. Mean		26	34		28			30			29	
Std. Deviation		16	29		12			16			15	
% % Sat 30 to 50		22%	13%		34%			28%			33%	



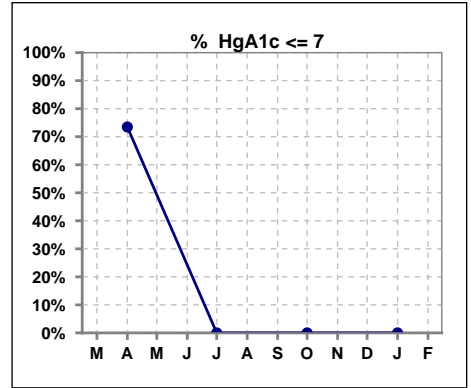
	Mar	Apr	May	Jun	Jul	Aug	Sep	Oct	Nov	Dec	Jan	Feb
# % Sat		77	8		80			79			78	
# % Sat > 50		5	1		2			7			6	
Pop. Mean		26	34		28			30			29	
Std. Deviation		16	29		12			16			15	
% % Sat > 50		6%	13%		3%			9%			8%	



Methodology: a) All labs for 'Adequacy of Dialysis', 'Nutrition', 'Osteodystrophy', 'Anemia' and 'Diabetes' based on last value of month; b) BP's and #L processed are average of all values for month; c) Access data takes last access of month; d) Values for SGA and 'Infection Control' use most recent result.

VI. Diabetes

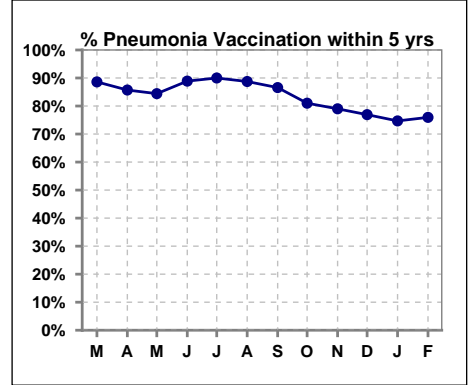
	Mar	Apr	May	Jun	Jul	Aug	Sep	Oct	Nov	Dec	Jan	Feb
# HgA1c		49			0			0			0	
# HgA1c <= 7		36			0			0			0	
Pop. Mean		6.3			0			0			0	
Std. Deviation		1.33			0			0			0	
% HgA1c <= 7		73%			0%			0%			0%	



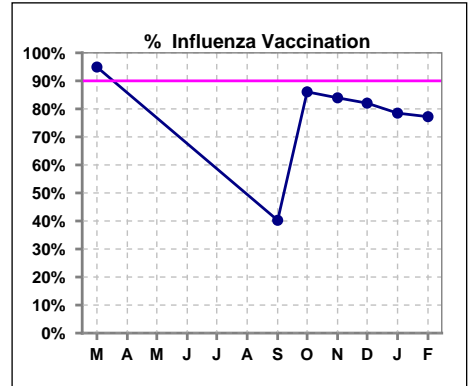
VII. Infection Control

Pneumonia vaccination within the past five years

	Mar	Apr	May	Jun	Jul	Aug	Sep	Oct	Nov	Dec	Jan	Feb
# Patient	79	77	77	81	80	80	82	79	81	78	79	79
# Pneumonia	70	66	65	72	72	71	71	64	64	60	59	60
% Pneumonia	89%	86%	84%	89%	90%	89%	87%	81%	79%	77%	75%	76%



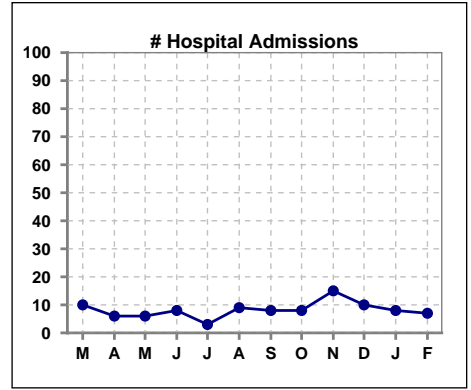
	Mar	Apr	May	Jun	Jul	Aug	Sep	Oct	Nov	Dec	Jan	Feb
# Patient	79						82	79	81	78	79	79
# Influenza	75						33	68	68	64	62	61
% Influenza	95%						40%	86%	84%	82%	78%	77%



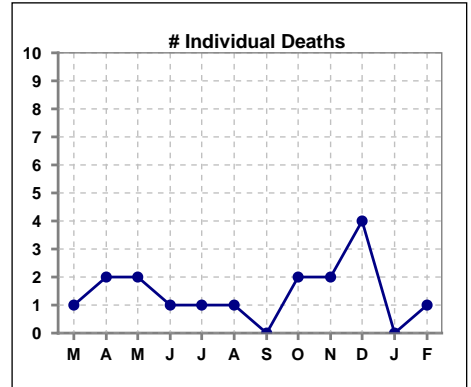
Methodology: a) All labs for 'Adequacy of Dialysis', 'Nutrition', 'Osteodystrophy', 'Anemia' and 'Diabetes' based on last value of month; b) BP's and #L processed are average of all values for month; c) Access data takes last access of month; d) Values for SGA and 'Infection Control' use most recent result.

VIII. Outcome measures

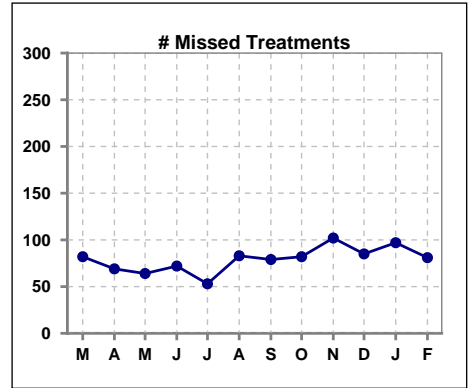
	Mar	Apr	May	Jun	Jul	Aug	Sep	Oct	Nov	Dec	Jan	Feb
# Patient	79	77	77	81	80	80	82	79	81	78	79	79
# Hospital Admissions	10	6	6	8	3	9	8	8	15	10	8	7



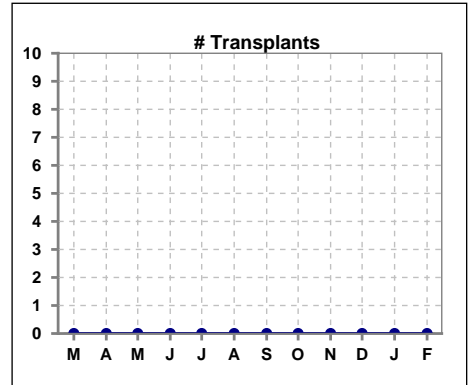
	Mar	Apr	May	Jun	Jul	Aug	Sep	Oct	Nov	Dec	Jan	Feb
# Patient	79	77	77	81	80	80	82	79	81	78	79	79
# Individual Deaths	1	2	2	1	1	1	0	2	2	4	0	1



	Mar	Apr	May	Jun	Jul	Aug	Sep	Oct	Nov	Dec	Jan	Feb
# Patient	79	77	77	81	80	80	82	79	81	78	79	79
# Missed Treatments	82	69	64	72	53	83	79	82	102	85	97	81



	Mar	Apr	May	Jun	Jul	Aug	Sep	Oct	Nov	Dec	Jan	Feb
# Patient	79	77	77	81	80	80	82	79	81	78	79	79
# Transplants	0	0	0	0	0	0	0	0	0	0	0	0



Methodology: a) All labs for 'Adequacy of Dialysis', 'Nutrition', 'Osteodystrophy', 'Anemia' and 'Diabetes' based on last value of month; b) BP's and #L processed are average of all values for month; c) Access data takes last access of month; d) Values for SGA and 'Infection Control' use most recent result.