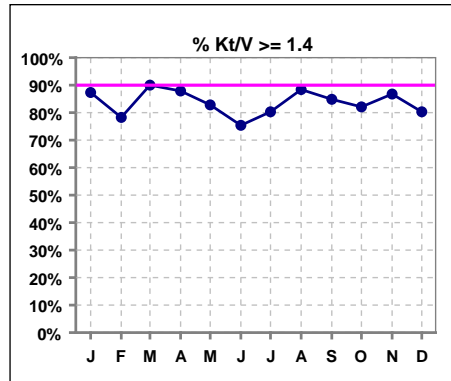


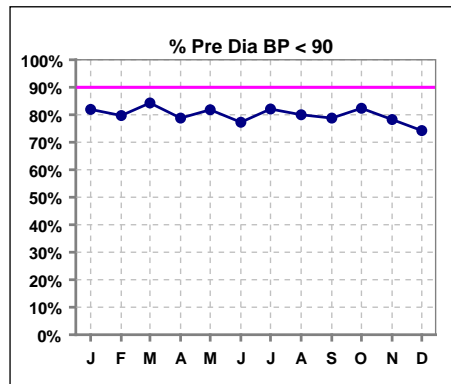
**I. ADEQUACY OF DIALYSIS**

	Jan	Feb	Mar	Apr	May	Jun	Jul	Aug	Sep	Oct	Nov	Dec
# Kt/V	71	69	70	66	64	65	66	69	66	67	68	66
# Kt/V >= 1.4	62	54	63	58	53	49	53	61	56	55	59	53
Pop. Mean	1.70	1.66	1.68	1.64	1.60	1.60	1.65	1.68	1.65	1.67	1.66	1.63
Std. Deviation	0.35	0.34	0.29	0.27	0.31	0.33	0.28	0.30	0.28	0.30	0.28	0.30
Network Mean '04	1.59	1.59	1.59	1.59	1.59	1.59	1.59	1.59	1.59	1.59	1.59	1.59
Natl. Mean '06							1.55	1.55	1.55	1.55	1.55	1.55
<b>% Kt/V &gt;= 1.4</b>	<b>87%</b>	<b>78%</b>	<b>90%</b>	<b>88%</b>	<b>83%</b>	<b>75%</b>	<b>80%</b>	<b>88%</b>	<b>85%</b>	<b>82%</b>	<b>87%</b>	<b>80%</b>
<b>% Kt/V &gt;= 1.2</b>	<b>97%</b>	<b>96%</b>	<b>93%</b>	<b>95%</b>	<b>91%</b>	<b>89%</b>	<b>97%</b>	<b>96%</b>	<b>95%</b>	<b>96%</b>	<b>93%</b>	<b>91%</b>
<b>Network % &gt;= 1.2 '06</b>	<b>92%</b>	<b>92%</b>	<b>92%</b>	<b>92%</b>	<b>92%</b>	<b>92%</b>	<b>92%</b>	<b>89%</b>	<b>89%</b>	<b>89%</b>	<b>89%</b>	<b>89%</b>
<b>Natl. % &gt;= 1.2 '06</b>	<b>89%</b>	<b>89%</b>	<b>89%</b>	<b>89%</b>	<b>89%</b>	<b>89%</b>	<b>89%</b>	<b>90%</b>	<b>90%</b>	<b>90%</b>	<b>90%</b>	<b>90%</b>

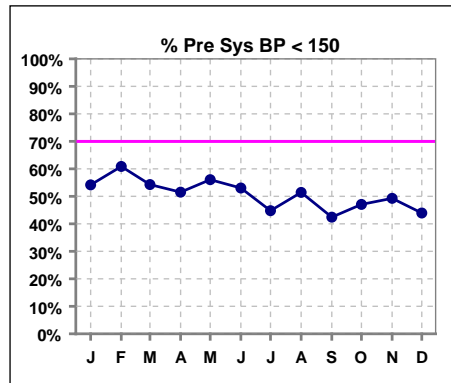


**Blood Pressure Control (Pre)**

	Jan	Feb	Mar	Apr	May	Jun	Jul	Aug	Sep	Oct	Nov	Dec
# Pre Dia BP	72	69	70	66	66	66	67	70	66	68	69	66
# Pre Dia BP < 90	59	55	59	52	54	51	55	56	52	56	54	49
Pop. Mean	76	77	76	77	76	78	77	77	77	77	77	79
Std. Deviation	16.0	16.9	15.5	16.6	15.3	16.3	15.0	14.7	14.8	13.9	14.2	15.7
Network Mean												
Natl. Mean												
<b>% Pre Dia BP &lt; 90</b>	<b>82%</b>	<b>80%</b>	<b>84%</b>	<b>79%</b>	<b>82%</b>	<b>77%</b>	<b>82%</b>	<b>80%</b>	<b>79%</b>	<b>82%</b>	<b>78%</b>	<b>74%</b>



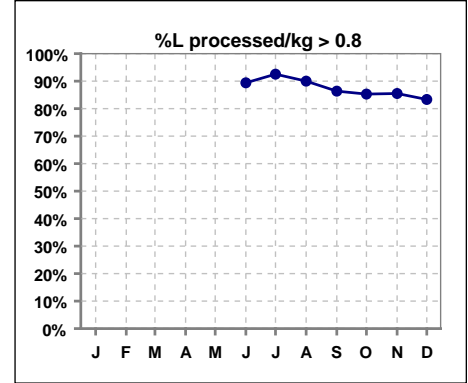
	Jan	Feb	Mar	Apr	May	Jun	Jul	Aug	Sep	Oct	Nov	Dec
# Pre Sys BP	72	69	70	66	66	66	67	70	66	68	69	66
# Pre Sys BP < 150	39	42	38	34	37	35	30	36	28	32	34	29
Pop. Mean	147	145	146	148	146	148	149	148	150	149	151	152
Std. Deviation	26.5	24.7	25.0	24.4	26.5	25.4	24.4	27.9	26.1	21.9	23.4	25.3
Network Mean												
Natl. Mean												
<b>% Pre Sys BP &lt; 150</b>	<b>54%</b>	<b>61%</b>	<b>54%</b>	<b>52%</b>	<b>56%</b>	<b>53%</b>	<b>45%</b>	<b>51%</b>	<b>42%</b>	<b>47%</b>	<b>49%</b>	<b>44%</b>



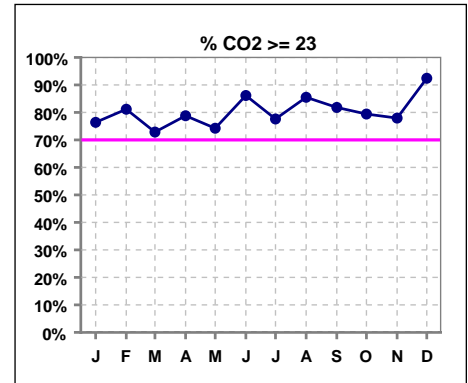
\*Methodology: a) Monthly values based on patient's monthly average of all values present for the month; b) Quarter values are average of all values for quarter; c) Values not averaged use last value present at months end.

**I. ADEQUACY OF DIALYSIS - CONT.**

	Jan	Feb	Mar	Apr	May	Jun	Jul	Aug	Sep	Oct	Nov	Dec
# L processed/kg						66	67	70	66	68	69	66
# L processed/kg>0.8						59	62	63	57	58	59	55
Pop. Mean						1	1	1	1	1	1	1
Std. Deviation						0.3	0.2	0.3	0.3	0.3	0.3	0.3
Network Mean												
Natl. Mean												
<b>% L processed/kg&gt;0.8</b>						<b>89%</b>	<b>93%</b>	<b>90%</b>	<b>86%</b>	<b>85%</b>	<b>86%</b>	<b>83%</b>



	Jan	Feb	Mar	Apr	May	Jun	Jul	Aug	Sep	Oct	Nov	Dec
# CO2	72	69	70	66	66	65	67	69	66	68	68	66
# CO2 >= 23	55	56	51	52	49	56	52	59	54	54	53	61
Pop. Mean	25	25	24	25	25	26	25	25	26	25	25	26
Std. Deviation	3.07	2.80	3.33	3.10	3.24	3.31	3.43	3.19	3.41	3.28	3.21	2.77
Network Mean												
Natl. Mean												
<b>% CO2 &gt;= 23</b>	<b>76%</b>	<b>81%</b>	<b>73%</b>	<b>79%</b>	<b>74%</b>	<b>86%</b>	<b>78%</b>	<b>86%</b>	<b>82%</b>	<b>79%</b>	<b>78%</b>	<b>92%</b>

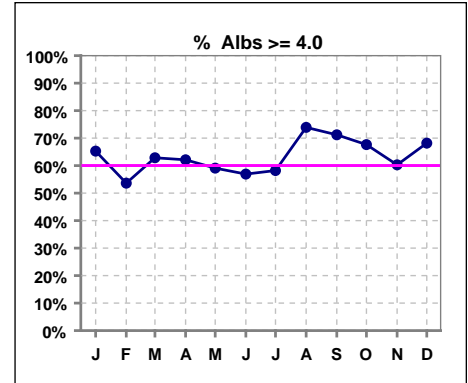


\*Methodology: a) Monthly values based on patient's monthly average of all values present for the month; b) Quarter values are average of all values for quarter; c) Values not averaged use last value present at months end.

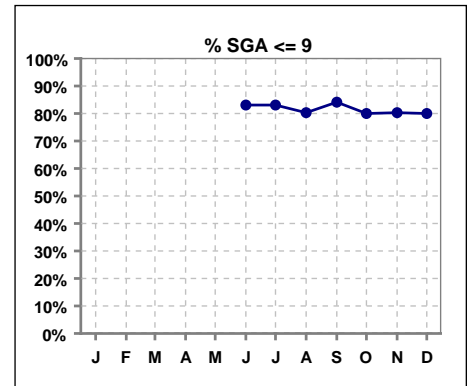
\*Albumin values use BCG method - as of July 2001

**II. NUTRITION**

	Jan	Feb	Mar	Apr	May	Jun	Jul	Aug	Sep	Oct	Nov	Dec
# Albumin	72	69	70	66	66	65	67	69	66	68	68	66
# Albumin >= 4.0	47	37	44	41	38	37	39	51	47	46	41	45
Pop. Mean	4.1	4.0	4.0	4.0	4.0	4.0	4.0	4.1	4.1	4.1	4.0	4.1
Std. Deviation	0.37	0.32	0.31	0.36	0.32	0.35	0.36	0.36	0.37	0.37	0.34	0.29
Network Mean	3.4	3.4	3.4	3.4	3.4	3.4	3.4	3.4	3.4	3.4	3.4	3.4
Natl. Mean	3.8	3.8	3.8	3.8	3.8	3.8	3.8	3.8	3.8	3.8	3.8	3.8
% Alb >= 3.5	94%	97%	94%	95%	95%	94%	93%	97%	94%	97%	96%	97%
% Alb >= 3.0	99%	100%	100%	100%	100%	98%	99%	100%	98%	100%	99%	100%
<b>% Alb &gt;= 4.0</b>	<b>65%</b>	<b>54%</b>	<b>63%</b>	<b>62%</b>	<b>59%</b>	<b>57%</b>	<b>58%</b>	<b>74%</b>	<b>71%</b>	<b>68%</b>	<b>60%</b>	<b>68%</b>
Netwk%>=3.5 '06	75%	75%	75%	75%	75%	75%	75%	82%	82%	82%	82%	82%
Netwk%>=4.0 '06	25%	25%	25%	25%	25%	25%	25%	34%	34%	34%	34%	34%
Natl % >= 3.5 '06	81%	81%	81%	81%	81%	81%	81%	81%	81%	81%	81%	81%
Natl. % >= 4.0 '06	39%	39%	39%	39%	39%	39%	39%	34%	34%	34%	34%	34%



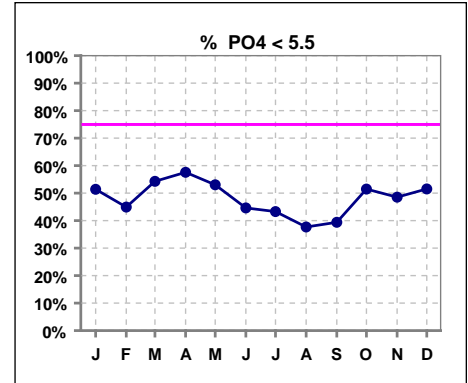
	Jan	Feb	Mar	Apr	May	Jun	Jul	Aug	Sep	Oct	Nov	Dec
# SGA						65	65	66	63	65	66	65
# SGA <=9						54	54	53	53	52	53	52
Pop. Mean						7	7	8	7	8	8	8
Std. Deviation						3.6	3.6	3.6	3.3	3.3	3.5	3.5
Network Mean												
Natl. Mean												
<b>% SGA &lt;= 9</b>						<b>83%</b>	<b>83%</b>	<b>80%</b>	<b>84%</b>	<b>80%</b>	<b>80%</b>	<b>80%</b>



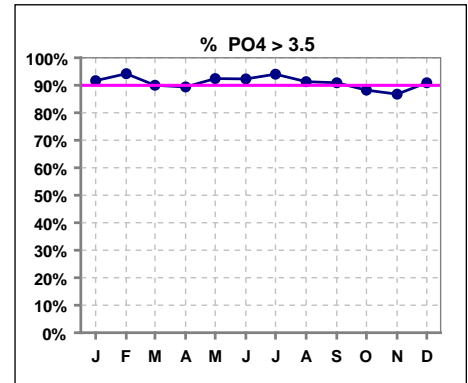
\*Methodology: a) Monthly values based on patient's monthly average of all values present for the month; b) Quarter values are average of all values for quarter; c) Values not averaged use last value present at months end.

**III. OSTEODYSTROPHY**

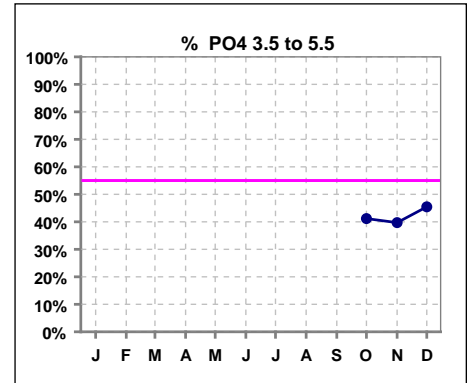
	Jan	Feb	Mar	Apr	May	Jun	Jul	Aug	Sep	Oct	Nov	Dec
# PO4	72	69	70	66	66	65	67	69	66	68	68	66
# PO4 < 5.5	37	31	38	38	35	29	29	26	26	35	33	34
Pop. Mean	5.6	5.7	5.5	5.6	5.6	5.9	5.9	5.9	5.9	5.7	5.5	5.7
Std. Deviation	1.70	1.63	1.72	1.80	1.59	1.88	1.71	1.74	1.87	1.87	1.77	1.83
Network Mean												
Natl. Mean '06	5											
<b>% PO4 &lt; 5.5</b>	51%	45%	54%	58%	53%	45%	43%	38%	39%	51%	49%	52%



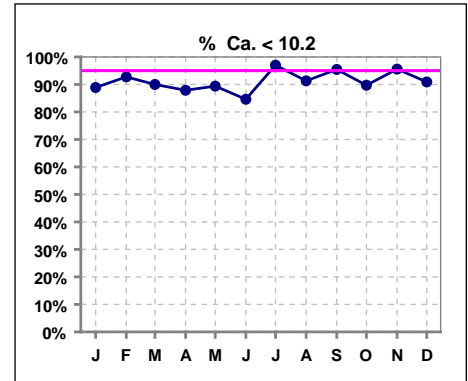
	Jan	Feb	Mar	Apr	May	Jun	Jul	Aug	Sep	Oct	Nov	Dec
# PO4	72	69	70	66	66	65	67	69	66	68	68	66
# PO4 > 3.5	66	65	63	59	61	60	63	63	60	60	59	60
Pop. Mean	5.6	5.7	5.5	5.6	5.6	5.9	5.9	5.9	5.9	5.7	5.5	5.7
Std. Deviation	1.70	1.63	1.72	1.80	1.59	1.88	1.71	1.74	1.87	1.87	1.77	1.83
Network Mean												
Natl. Mean '06	5											
<b>% PO4 &gt; 3.5</b>	92%	94%	90%	89%	92%	92%	94%	91%	91%	88%	87%	91%



	Jan	Feb	Mar	Apr	May	Jun	Jul	Aug	Sep	Oct	Nov	Dec	
# PO4											68	68	66
# PO4 3.5 to 5.5											28	27	30
Pop. Mean											5.7	5.5	5.7
Std. Deviation											1.87	1.77	1.83
Network Mean													
<b>% PO4 3.5 to 5.5</b>											41%	40%	45%



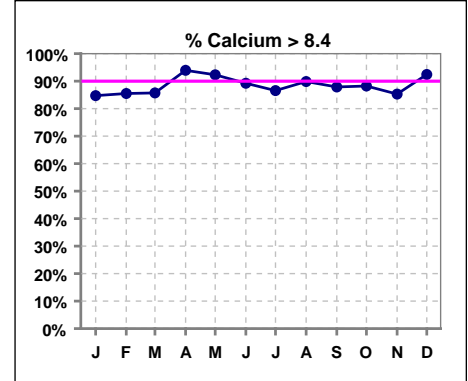
	Jan	Feb	Mar	Apr	May	Jun	Jul	Aug	Sep	Oct	Nov	Dec
# Calcium	72	69	70	66	66	65	67	69	66	68	68	66
# Calcium < 10.2	64	64	63	58	59	55	65	63	63	61	65	60
Pop. Mean	9.2	9.2	9.3	9.3	9.4	9.3	9.2	9.2	9.3	9.3	9.3	9.3
Std. Deviation	0.75	0.73	0.75	0.63	0.67	0.73	0.65	0.75	0.73	0.74	0.67	0.75
Network Mean												
Natl. Mean '06	9											
<b>% Ca &lt; 10.2</b>	89%	93%	90%	88%	89%	85%	97%	91%	95%	90%	96%	91%



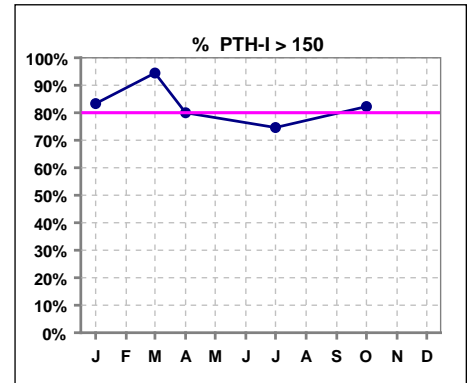
\*Methodology: a) Monthly values based on patient's monthly average of all values present for the month; b) Quarter values are average of all values for quarter; c) Values not averaged use last value present at months end.

**III. OSTEODYSTROPHY - CONT.**

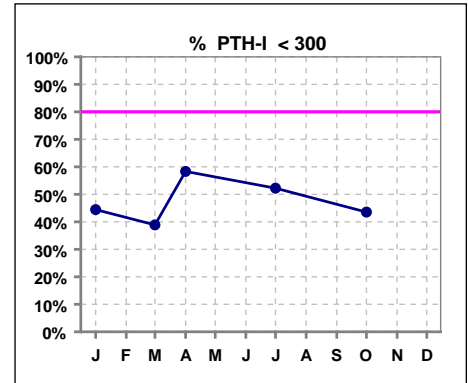
	Jan	Feb	Mar	Apr	May	Jun	Jul	Aug	Sep	Oct	Nov	Dec
# Calcium	72	69	70	66	65	65	67	69	66	68	68	66
# Calcium > 8.4	61	59	60	62	60	58	58	62	58	60	58	61
Pop. Mean	9.2	9.2	9.3	9.3	9.4	9.3	9.2	9.2	9.3	9.3	9.3	9.3
Std. Deviation	0.75	0.73	0.75	0.63	0.68	0.73	0.65	0.75	0.73	0.74	0.67	0.75
Network Mean												
Natl. Mean '06	9	9	9	9	9	9	9	9	9	9	9	9
<b>% Calcium &gt; 8.4</b>	<b>85%</b>	<b>86%</b>	<b>86%</b>	<b>94%</b>	<b>92%</b>	<b>89%</b>	<b>87%</b>	<b>90%</b>	<b>88%</b>	<b>88%</b>	<b>85%</b>	<b>92%</b>



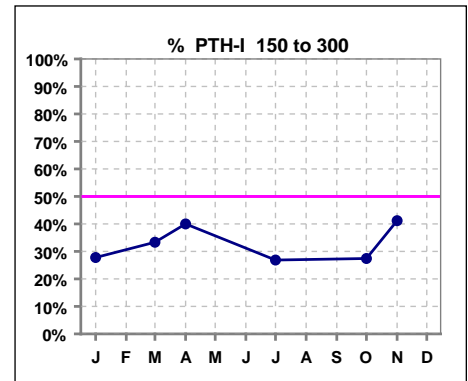
	Jan	Feb	Mar	Apr	May	Jun	Jul	Aug	Sep	Oct	Nov	Dec
# PTH-I	72		18	60			67			62		
# PTH-I > 150	60		17	48			50			51		
Pop. Mean	463		503	380			453			455		
Std. Deviation	417		401	345			581			381		
Network Mean												
Natl. Mean												
<b>% PTH-I &gt; 150</b>	<b>83%</b>		<b>94%</b>	<b>80%</b>			<b>75%</b>			<b>82%</b>		



	Jan	Feb	Mar	Apr	May	Jun	Jul	Aug	Sep	Oct	Nov	Dec
# PTH-I	72		18	60			67			62		
# PTH-I < 300	32		7	35			35			27		
Pop. Mean	463		503	380			453			455		
Std. Deviation	417		401	345			581			381		
Network Mean												
Natl. Mean												
<b>% PTH-I &lt; 300</b>	<b>44%</b>		<b>39%</b>	<b>58%</b>			<b>52%</b>			<b>44%</b>		



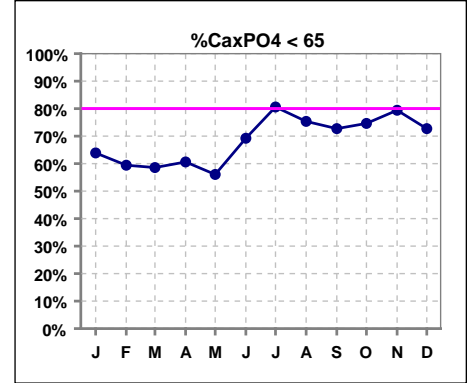
	Jan	Feb	Mar	Apr	May	Jun	Jul	Aug	Sep	Oct	Nov	Dec
# PTH-I	72		18	60			67			62	17	
# PTH-I 150 to 300	20		6	24			18			17	7	
Pop. Mean	463		503	380			453			455	546	
Std. Deviation	417		401	345			581			381	544	
Network Mean												
Natl. Mean												
<b>% PTH-I 150 to 300</b>	<b>28%</b>		<b>33%</b>	<b>40%</b>			<b>27%</b>			<b>27%</b>	<b>41%</b>	



\*Methodology: a) Monthly values based on patient's monthly average of all values present for the month; b) Quarter values are average of all values for quarter; c) Values not averaged use last value present at months end.

**III. OSTEODYSTROPHY - CONT.**

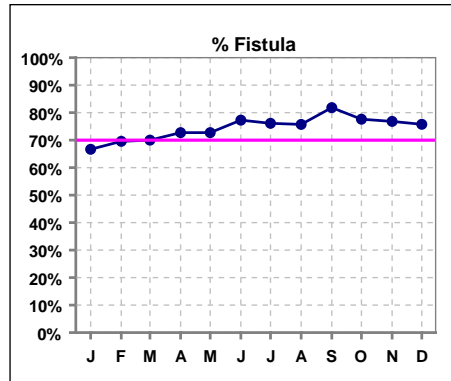
	Jan	Feb	Mar	Apr	May	Jun	Jul	Aug	Sep	Oct	Nov	Dec
# Ca x PO4	72	69	70	66	66	65	67	69	66	67	68	66
# Ca x PO4 < 55	46	41	41	40	37							
# Ca x PO4 < 65						45	54	52	48	50	54	48
Pop. Mean	52.4	54.1	52.7	53.3	53.9	57.1	56.9	56.8	56.3	54.4	52.8	54.5
Std. Deviation	15.6	15.2	17.4	18.0	16.1	19.9	21.3	20.1	18.8	18.5	18.2	19.1
Network Mean												
Natl. Mean												
<b>% CaxPO4 &lt; 65</b>	<b>64%</b>	<b>59%</b>	<b>59%</b>	<b>61%</b>	<b>56%</b>	<b>69%</b>	<b>81%</b>	<b>75%</b>	<b>73%</b>	<b>75%</b>	<b>79%</b>	<b>73%</b>



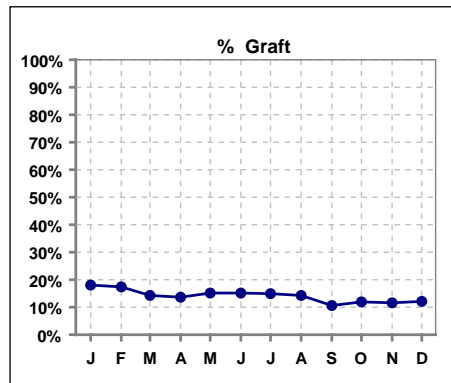
\*Methodology: a) Monthly values based on patient's monthly average of all values present for the month; b) Quarter values are average of all values for quarter; c) Values not averaged use last value present at months end.

**IV. ACCESS**

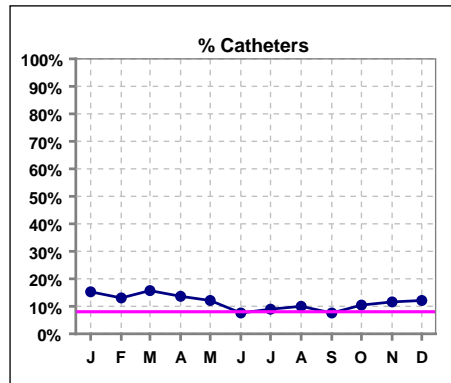
	Jan	Feb	Mar	Apr	May	Jun	Jul	Aug	Sep	Oct	Nov	Dec
# Access	72	69	70	66	66	66	67	70	66	67	69	66
# Fistula	48	48	49	48	48	51	51	53	54	52	53	50
Network % '06	58%	58%	58%	58%	58%	58%	58%	61%	61%	61%	61%	61%
Natl. % '06	39%	39%	39%	39%	39%	39%	39%	45%	45%	45%	45%	45%
<b>% Fistula</b>	<b>67%</b>	<b>70%</b>	<b>70%</b>	<b>73%</b>	<b>73%</b>	<b>77%</b>	<b>76%</b>	<b>76%</b>	<b>82%</b>	<b>78%</b>	<b>77%</b>	<b>76%</b>



	Jan	Feb	Mar	Apr	May	Jun	Jul	Aug	Sep	Oct	Nov	Dec
# Access	72	69	70	66	66	66	67	70	66	67	69	66
# Graft	13	12	10	9	10	10	10	10	7	8	8	8
Network %												
Natl. %												
<b>% Graft</b>	<b>18%</b>	<b>17%</b>	<b>14%</b>	<b>14%</b>	<b>15%</b>	<b>15%</b>	<b>15%</b>	<b>14%</b>	<b>11%</b>	<b>12%</b>	<b>12%</b>	<b>12%</b>

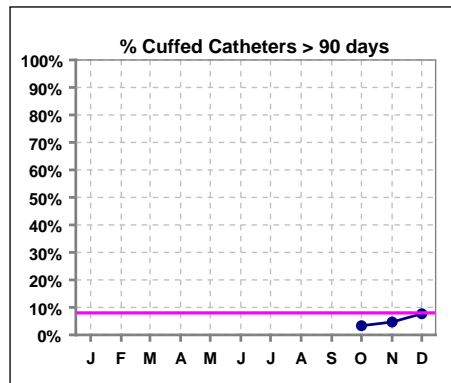


	Jan	Feb	Mar	Apr	May	Jun	Jul	Aug	Sep	Oct	Nov	Dec
# Access	72	69	70	66	66	66	67	70	66	67	69	66
# Catheters	11	9	11	9	8	5	6	7	5	7	8	8
Network % '06								22%	22%	22%	22%	22%
Natl. % '06	27%	27%	27%	27%	27%	27%	27%	29%	29%	29%	29%	29%
<b>% Catheters</b>	<b>15%</b>	<b>13%</b>	<b>16%</b>	<b>14%</b>	<b>12%</b>	<b>8%</b>	<b>9%</b>	<b>10%</b>	<b>8%</b>	<b>10%</b>	<b>12%</b>	<b>12%</b>



**Cuffed Catheters > 90 days**

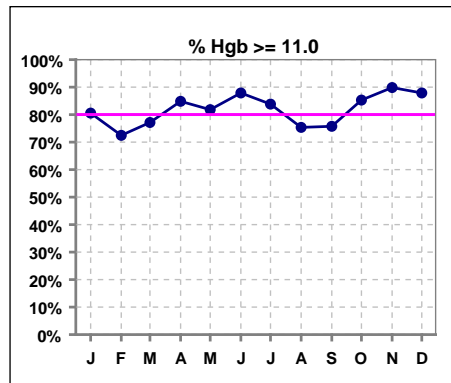
	Jan	Feb	Mar	Apr	May	Jun	Jul	Aug	Sep	Oct	Nov	Dec
# Access										67	69	66
# Cuffed Catheters										2	3	5
Network % '06										22%	22%	22%
Natl. % '06										29%	29%	29%
<b>% Cuffed Catheters</b>										<b>3%</b>	<b>5%</b>	<b>8%</b>



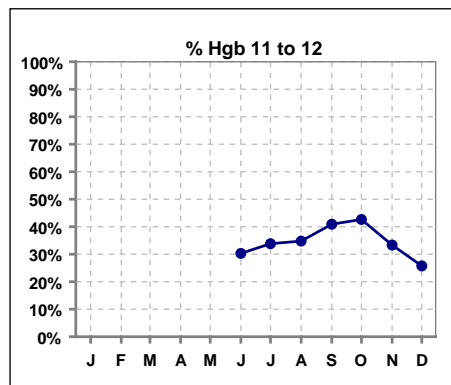
\*Methodology: a) Monthly values based on patient's monthly average of all values present for the month; b) Quarter values are average of all values for quarter; c) Values not averaged use last value present at months end.

**V. ANEMIA**

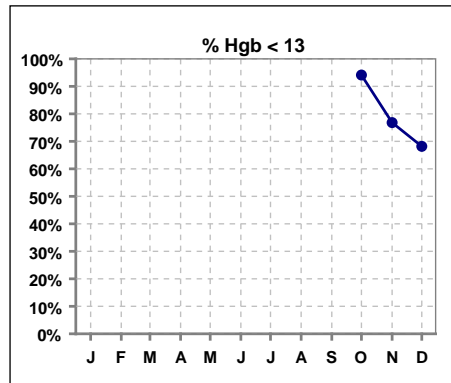
	Jan	Feb	Mar	Apr	May	Jun	Jul	Aug	Sep	Oct	Nov	Dec
# Hgb	72	69	70	66	66	66	68	69	66	68	69	66
# Hgb >= 11.0	58	50	54	56	54	58	57	52	50	58	62	58
Pop. Mean	12.0	11.8	11.8	12.0	12.2	12.4	12.0	11.7	11.6	11.8	12.1	12.3
Std. Deviation	1.2	1.3	1.2	1.0	1.3	1.2	1.1	1.1	1.0	0.9	1.1	1.1
Network Mean	11.8	11.8	11.8	11.8	11.8	11.8	11.8	11.8	11.8	11.8	11.8	11.8
Natl. Mean '06								12	12	12	12	12
<b>% Hgb &gt;= 11.0</b>	<b>81%</b>	<b>72%</b>	<b>77%</b>	<b>85%</b>	<b>82%</b>	<b>88%</b>	<b>84%</b>	<b>75%</b>	<b>76%</b>	<b>85%</b>	<b>90%</b>	<b>88%</b>
% Hgb <= 11.0	22%	29%	23%	15%	20%	14%	18%	26%	24%	16%	12%	12%
% Netwk >= 11 '06	80%	80%	80%	80%	80%	80%	80%	87%	87%	87%	87%	87%
% Natl. >= 11 '06	80%	80%	80%	80%	80%	80%	80%	84%	84%	84%	84%	84%



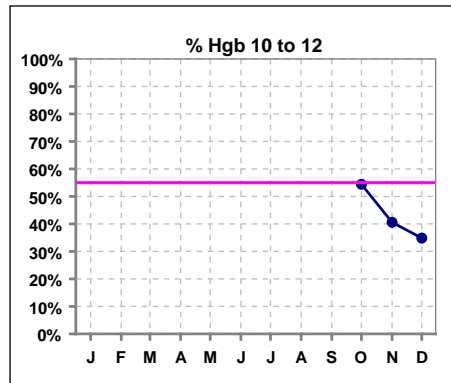
	Jan	Feb	Mar	Apr	May	Jun	Jul	Aug	Sep	Oct	Nov	Dec
# Hgb						66	68	69	66	68	69	66
# Hgb 11 to 12						20	23	24	27	29	23	17
Pop. Mean						12.4	12.0	11.7	11.6	11.8	12.1	12.3
Std. Deviation						1.2	1.1	1.1	1.0	0.9	1.1	1.1
Network Mean						11.8	11.8	11.8	11.8	11.8	11.8	11.8
Natl. Mean '06								12	12	12	12	12
<b>% Hgb 11 to 12</b>						<b>30%</b>	<b>34%</b>	<b>35%</b>	<b>41%</b>	<b>43%</b>	<b>33%</b>	<b>26%</b>



	Jan	Feb	Mar	Apr	May	Jun	Jul	Aug	Sep	Oct	Nov	Dec
# Hgb										68	69	66
# Hgb < 13										64	53	45
Pop. Mean										11.8	12.1	12.3
Std. Deviation										0.9	1.1	1.1
Network Mean										11.8	11.8	11.8
<b>% Hgb &lt; 13</b>										<b>94%</b>	<b>77%</b>	<b>68%</b>



	Jan	Feb	Mar	Apr	May	Jun	Jul	Aug	Sep	Oct	Nov	Dec
# Hgb										68	69	66
# Hgb 10 to 12										37	28	23
Pop. Mean										11.8	12.1	12.3
Std. Deviation										0.9	1.1	1.1
Network Mean										11.8	11.8	11.8
<b>% Hgb 10 to 12</b>										<b>54%</b>	<b>41%</b>	<b>35%</b>

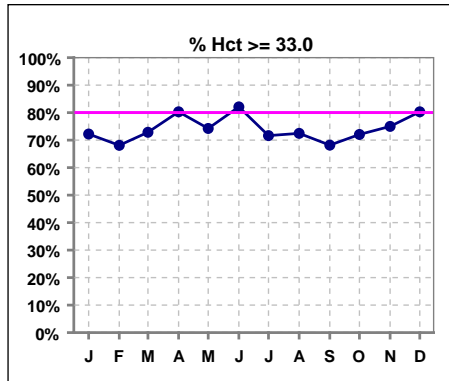


\*Methodology: a) Monthly values based on patient's monthly average of all values present for the month; b) Quarter values are average of all values for quarter; c) Values not averaged use last value present at months end.



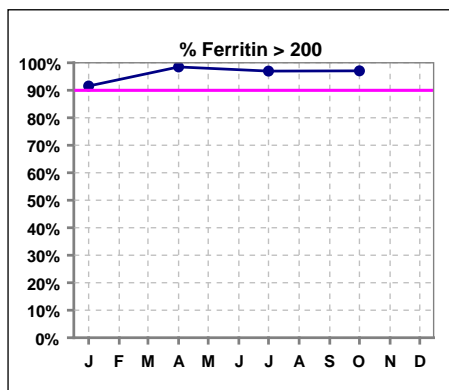
**V. ANEMIA - CONT.**

	Jan	Feb	Mar	Apr	May	Jun	Jul	Aug	Sep	Oct	Nov	Dec
# Hct	72	69	70	66	66	67	67	69	66	68	68	66
# Hct >= 33.0	52	47	51	53	49	55	48	50	45	49	51	53
Pop. Mean	35	35	35	35	36	36	35	35	34	35	35	36
Std. Deviation	3.52	4.17	3.81	3.15	3.91	3.51	3.24	3.41	2.93	2.87	3.33	3.41
Network Mean												
Natl. Mean												
<b>% Hct &gt;= 33.0</b>	<b>72%</b>	<b>68%</b>	<b>73%</b>	<b>80%</b>	<b>74%</b>	<b>82%</b>	<b>72%</b>	<b>72%</b>	<b>68%</b>	<b>72%</b>	<b>75%</b>	<b>80%</b>
<b>% Netwk &gt;= 33 '05</b>	<b>94%</b>	<b>94%</b>	<b>94%</b>	<b>94%</b>	<b>94%</b>	<b>94%</b>	<b>94%</b>	<b>94%</b>	<b>94%</b>	<b>94%</b>	<b>94%</b>	<b>94%</b>
<b>% Natl. &gt;= 33 '05</b>	<b>92%</b>	<b>92%</b>	<b>92%</b>	<b>92%</b>	<b>92%</b>	<b>92%</b>	<b>92%</b>	<b>92%</b>	<b>92%</b>	<b>92%</b>	<b>92%</b>	<b>92%</b>

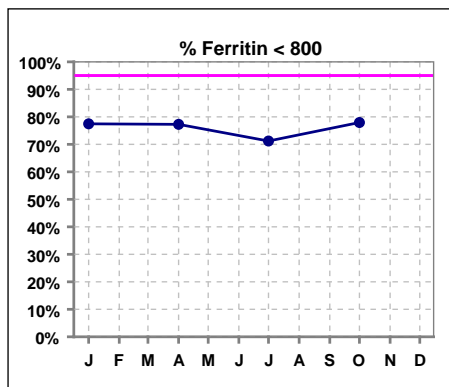


**Iron Profile**

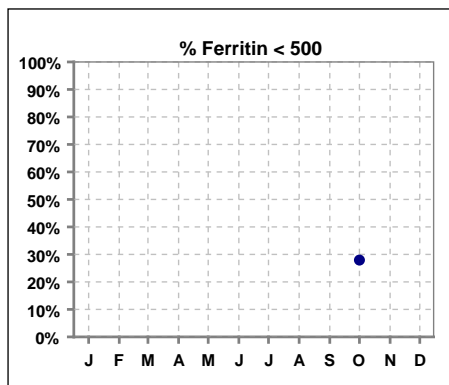
	Jan	Feb	Mar	Apr	May	Jun	Jul	Aug	Sep	Oct	Nov	Dec
# Ferritin	71			66			66			68		
# Ferritin >= 100	69			65								
# Ferritin > 200							64			66		
Pop. Mean	628			621			665			661		
Std. Deviation	321			270			293			312		
Network Mean												
Natl. Mean '06												
<b>% Ferritin &gt; 200</b>	<b>92%</b>			<b>98%</b>			<b>97%</b>			<b>97%</b>		
<b>% Netwk &gt;= 100 '06</b>	<b>92%</b>			<b>92%</b>			<b>93%</b>			<b>93%</b>		
<b>% Natl. &gt;=100 '06</b>	<b>94%</b>			<b>94%</b>			<b>95%</b>			<b>95%</b>		



	Jan	Feb	Mar	Apr	May	Jun	Jul	Aug	Sep	Oct	Nov	Dec
# Ferritin	71			66			66			68		
# Ferritin < 800	55			51			47			53		
Pop. Mean	628			621			665			661		
Std. Deviation	321			270			293			312		
Network Mean												
Natl. Mean '06												
<b>% Ferritin &lt; 800</b>	<b>77%</b>			<b>77%</b>			<b>71%</b>			<b>78%</b>		



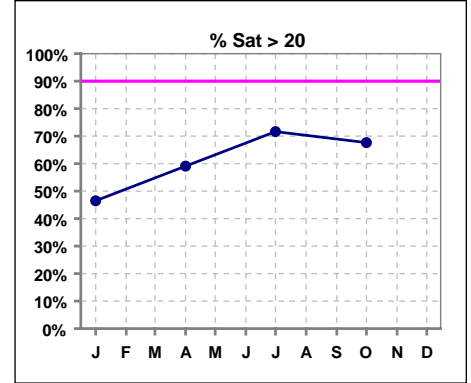
	Jan	Feb	Mar	Apr	May	Jun	Jul	Aug	Sep	Oct	Nov	Dec
# Ferritin										68		
# Ferritin < 500										19		
Pop. Mean										661		
Std. Deviation										312		
Network Mean												
<b>% Ferritin &lt; 500</b>										<b>28%</b>		



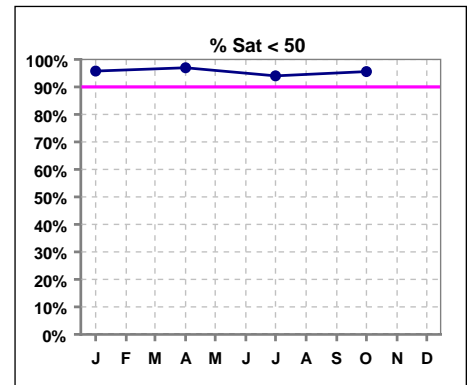
\*Methodology: a) Monthly values based on patient's monthly average of all values present for the month; b) Quarter values are average of all values for quarter; c) Values not averaged use last value present at months end.

**V. ANEMIA - CONT.**

	Jan	Feb	Mar	Apr	May	Jun	Jul	Aug	Sep	Oct	Nov	Dec
# % Sat	71			66			67			68		
# % Sat > 20	33			39			48			46		
Pop. Mean	24			26			29			27		
Std. Deviation	12			12			14			12		
Network Mean												
Natl. Mean '06	28			28			28			28		
<b>% Sat% &gt; 20</b>	<b>46%</b>			<b>59%</b>			<b>72%</b>			<b>68%</b>		
<b>% Netwk &gt;= 20 '06</b>	<b>74%</b>			<b>74%</b>			<b>74%</b>			<b>74%</b>		
<b>% Natl. &gt;=20 '06</b>	<b>79%</b>			<b>79%</b>			<b>79%</b>			<b>79%</b>		



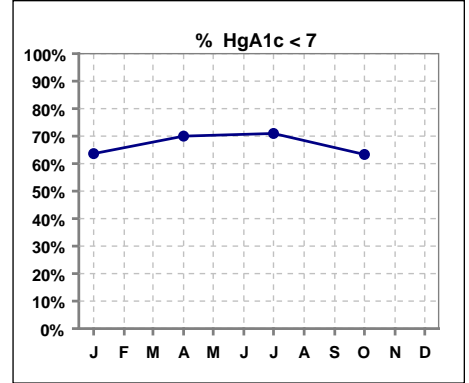
	Jan	Feb	Mar	Apr	May	Jun	Jul	Aug	Sep	Oct	Nov	Dec
# % Sat	71			66			67			68		
# % Sat < 50	68			64			63			65		
Pop. Mean	24			26			29			27		
Std. Deviation	12			12			14			12		
Network Mean												
Natl. Mean '06										28		
<b>% Sat% &lt; 50</b>	<b>96%</b>			<b>97%</b>			<b>94%</b>			<b>96%</b>		



\*Methodology: a) Monthly values based on patient's monthly average of all values present for the month; b) Quarter values are average of all values for quarter; c) Values not averaged use last value present at months end.

**VI. Diabetes**

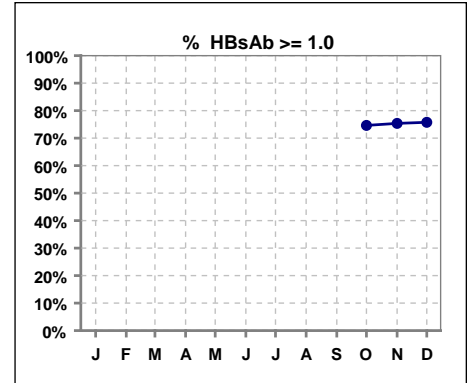
	Jan	Feb	Mar	Apr	May	Jun	Jul	Aug	Sep	Oct	Nov	Dec
# HgA1c	33			30			31			30		
# HgA1c < 7	21			21			22			19		
Pop. Mean	6.8			6.3			6.7			6.6		
Std. Deviation	1.52			1.41			1.26			1.15		
Network Mean												
Natl. Mean												
<b>% HgA1c &lt; 7</b>	<b>64%</b>			<b>70%</b>			<b>71%</b>			<b>63%</b>		



\*Methodology: a) Monthly values based on patient's monthly average of all values present for the month; b) Quarter values are average of all values for quarter; c) Values not averaged use last value present at months end.

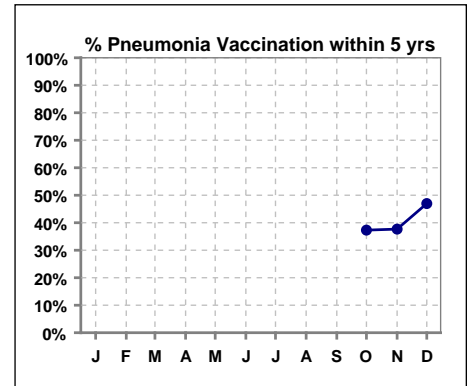
**VII. Infection Control**

	Jan	Feb	Mar	Apr	May	Jun	Jul	Aug	Sep	Oct	Nov	Dec
# Patient										67	69	66
# HBsAb >= 1.0										50	52	50
<b>% HBsAb &gt;= 1.0</b>										<b>75%</b>	<b>75%</b>	<b>76%</b>



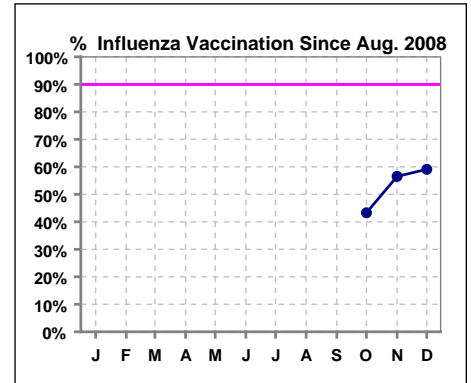
**Pneumonia vaccination within the past five years at NKC**

	Jan	Feb	Mar	Apr	May	Jun	Jul	Aug	Sep	Oct	Nov	Dec
# Patient										67	69	66
# Pneumonia										25	26	31
<b>% Pneumonia</b>										<b>37%</b>	<b>38%</b>	<b>47%</b>



**Influenza vaccination since August at NKC**

	Jan	Feb	Mar	Apr	May	Jun	Jul	Aug	Sep	Oct	Nov	Dec
# Patient								73	67	67	69	66
# Influenza since 08/08										29	39	39
<b>% Influenza</b>										<b>43%</b>	<b>57%</b>	<b>59%</b>



\*Methodology: a) Monthly values based on patient's monthly average of all values present for the month; b) Quarter values are average of all values for quarter; c) Values not averaged use last value present at months end.