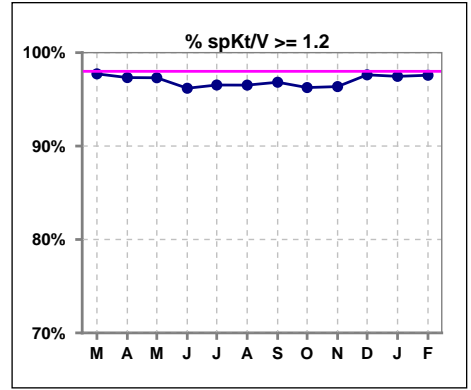
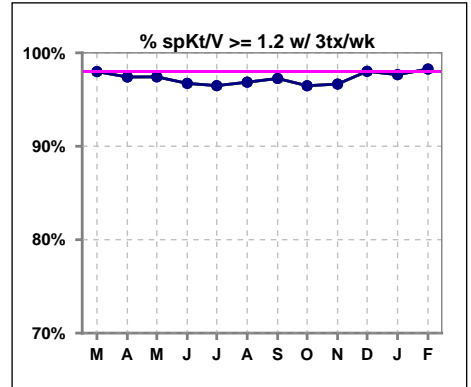


I. ADEQUACY OF DIALYSIS

	Mar	Apr	May	Jun	Jul	Aug	Sep	Oct	Nov	Dec	Jan	Feb
# spKt/V	1630	1611	1598	1574	1558	1553	1546	1525	1514	1516	1497	1487
# spKt/V >= 1.2	1593	1568	1555	1514	1504	1499	1497	1468	1459	1480	1459	1451
Pop. Mean	1.65	1.63	1.61	1.57	1.58	1.57	1.57	1.57	1.58	1.58	1.58	1.58
Std. Deviation	0.33	0.31	0.32	0.30	0.34	0.30	0.30	0.30	0.30	0.30	0.30	0.30
% spKt/V >= 1.2	98%	97%	97%	96%	97%	97%	97%	96%	96%	98%	97%	98%

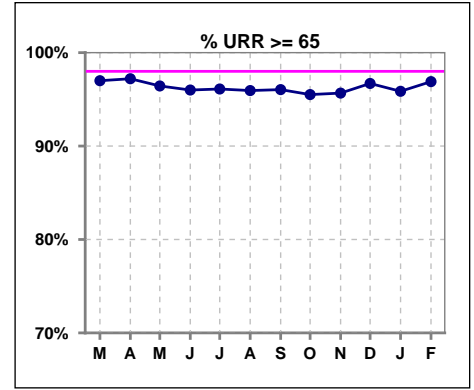


	Mar	Apr	May	Jun	Jul	Aug	Sep	Oct	Nov	Dec	Jan	Feb
# spKt/V w/ 3tx/wk	1446	1429	1401	1407	1395	1401	1386	1477	1466	1467	1455	1441
# spKt/V >= 1.2 w/3tx/wk	1417	1392	1365	1361	1346	1357	1348	1425	1417	1438	1421	1416
Pop. Mean	1.66	1.63	1.62	1.57	1.59	1.57	1.57	1.58	1.58	1.58	1.58	1.58
Std. Deviation	0.33	0.32	0.32	0.30	0.34	0.29	0.30	0.30	0.30	0.30	0.30	0.30
% >= 1.2 w/3tx/wk	98%	97%	97%	97%	96%	97%	97%	96%	97%	98%	98%	98%

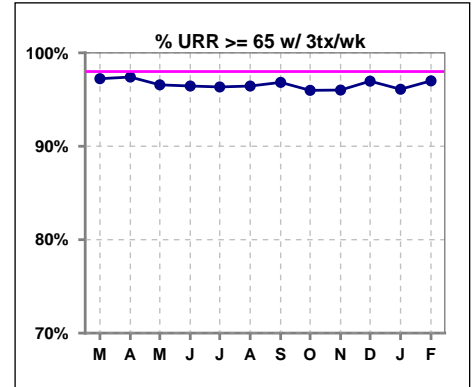


I. ADEQUACY OF DIALYSIS - CONT.

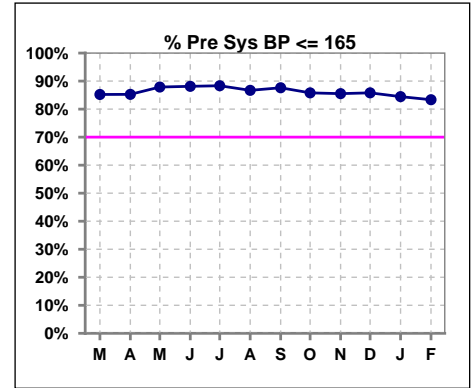
	Mar	Apr	May	Jun	Jul	Aug	Sep	Oct	Nov	Dec	Jan	Feb
# URR	1631	1611	1598	1599	1593	1601	1592	1582	1570	1576	1570	1547
# URR >= 65	1582	1566	1541	1535	1531	1536	1529	1511	1502	1524	1505	1499
Pop. Mean	75	75	74	74	74	74	74	74	74	74	74	74
Std. Deviation	6.28	6.22	6.71	6.18	6.47	6.13	6.32	6.34	6.19	6.09	6.02	5.97
% URR >= 65	97%	97%	96%	96%	96%	96%	96%	96%	96%	97%	96%	97%



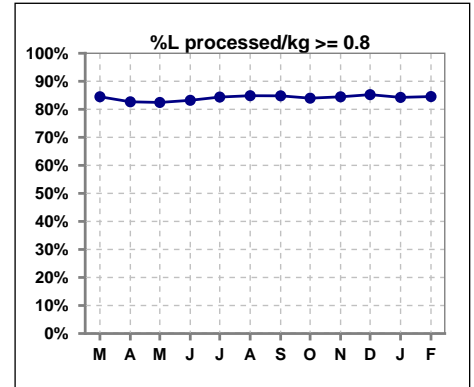
	Mar	Apr	May	Jun	Jul	Aug	Sep	Oct	Nov	Dec	Jan	Feb
# URR w/ 3tx/wk	1446	1428	1401	1408	1396	1407	1392	1495	1481	1484	1488	1467
# URR>=65 w/ 3tx/wk	1406	1391	1353	1358	1345	1357	1348	1435	1422	1439	1430	1423
Pop. Mean	75	75	75	74	74	74	74	74	74	74	74	74
Std. Deviation	6.25	6.16	6.73	6.18	6.41	6.03	6.16	6.20	6.02	5.96	5.92	5.88
% URR>=65 w/ 3tx/wk	97%	97%	97%	96%	96%	96%	97%	96%	96%	97%	96%	97%



	Mar	Apr	May	Jun	Jul	Aug	Sep	Oct	Nov	Dec	Jan	Feb
# Pre Sys BP	1638	1615	1609	1618	1612	1609	1599	1591	1582	1585	1582	1562
# Pre Sys BP <= 165	1414	1397	1428	1446	1445	1415	1412	1385	1370	1377	1357	1326
Pop. Mean	145	145	143	143	141	143	143	145	145	145	145	145
Std. Deviation	19.3	19.0	19.1	19.1	19.2	19.3	19.1	18.9	19.2	18.7	19.1	19.4
%Pre Sys BP <=165	85%	85%	88%	88%	88%	87%	88%	86%	86%	86%	84%	83%



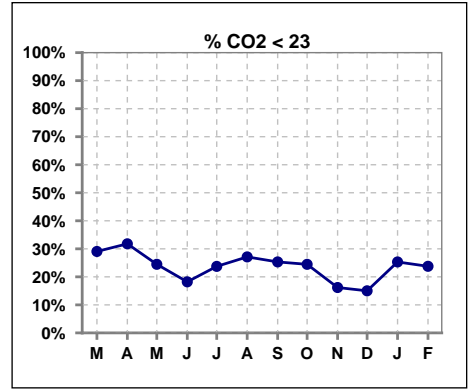
	Mar	Apr	May	Jun	Jul	Aug	Sep	Oct	Nov	Dec	Jan	Feb
# L processed/kg	1637	1611	1607	1615	1613	1611	1600	1592	1583	1585	1581	1560
# L processed/kg>=0.8	1383	1332	1325	1344	1361	1367	1357	1337	1337	1351	1332	1319
Pop. Mean	1	1	1	1	1	1	1	1	1	1	1	1
Std. Deviation	0.3	0.3	0.3	0.3	0.3	0.3	0.3	0.3	0.3	0.3	0.3	0.3
% L processed/kg>=0.8	84%	83%	82%	83%	84%	85%	85%	84%	84%	85%	84%	85%



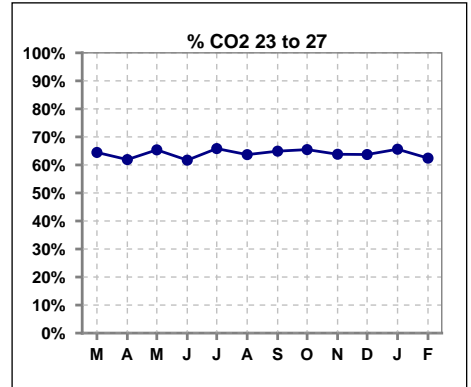
Methodology: a) All labs for 'Adequacy of Dialysis', 'Nutrition', 'Osteodystrophy', 'Anemia' and 'Diabetes' based on last value of month; b) BP's and #L processed are average of all values for month; c) Access data takes last access of month; d) Values for SGA and 'Infection Control' use most recent result.

I. ADEQUACY OF DIALYSIS - CONT.

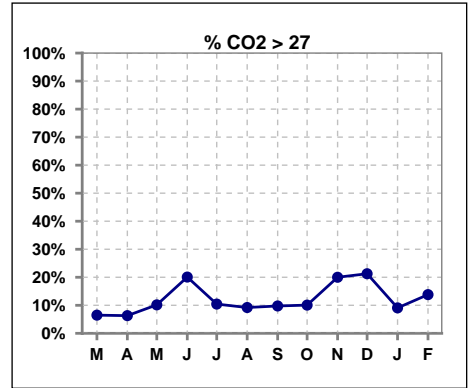
	Mar	Apr	May	Jun	Jul	Aug	Sep	Oct	Nov	Dec	Jan	Feb
# CO2	1635	1617	1606	1614	1610	1608	1599	1590	1575	1585	1576	1557
# CO2 < 23	475	514	393	294	382	436	405	389	255	238	399	370
Pop. Mean	24	24	24	25	24	24	24	24	25	25	24	24
Std. Deviation	2.65	2.67	2.85	3.11	2.96	2.96	2.94	2.96	2.96	2.91	2.80	3.04
% CO2 < 23	29%	32%	24%	18%	24%	27%	25%	24%	16%	15%	25%	24%



	Mar	Apr	May	Jun	Jul	Aug	Sep	Oct	Nov	Dec	Jan	Feb
# CO2	1635	1617	1606	1614	1610	1608	1599	1590	1575	1585	1576	1557
# CO2 23 to 27	1054	1001	1050	996	1060	1024	1038	1041	1005	1010	1034	972
Pop. Mean	24	24	24	25	24	24	24	24	25	25	24	24
Std. Deviation	2.65	2.67	2.85	3.11	2.96	2.96	2.94	2.96	2.96	2.91	2.80	3.04
% CO2 23 to 27	64%	62%	65%	62%	66%	64%	65%	65%	64%	64%	66%	62%



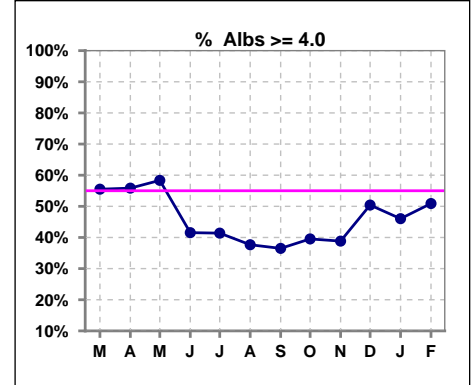
	Mar	Apr	May	Jun	Jul	Aug	Sep	Oct	Nov	Dec	Jan	Feb
# CO2	1635	1617	1606	1614	1610	1608	1599	1590	1575	1585	1576	1557
# CO2 > 27	106	102	163	324	168	148	156	160	315	337	143	215
Pop. Mean	24	24	24	25	24	24	24	24	25	25	24	24
Std. Deviation	2.65	2.67	2.85	3.11	2.96	2.96	2.94	2.96	2.96	2.91	2.80	3.04
% CO2 > 27	6%	6%	10%	20%	10%	9%	10%	10%	20%	21%	9%	14%



*Albumin values use BCG method - as of July 2001

II. NUTRITION

	Mar	Apr	May	Jun	Jul	Aug	Sep	Oct	Nov	Dec	Jan	Feb
# Albumin	1636	1617	1606	1615	1609	1609	1600	1591	1576	1585	1577	1558
# Albumin >= 4.0	908	903	937	671	666	606	584	629	612	799	726	793
Pop. Mean	3.9	4.0	4.0	3.8	3.8	3.8	3.8	3.8	3.8	3.9	3.9	3.9
Std. Deviation	0.38	0.37	0.37	0.42	0.42	0.41	0.40	0.40	0.40	0.43	0.42	0.43
% Alb >= 4.0	56%	56%	58%	42%	41%	38%	37%	40%	39%	50%	46%	51%

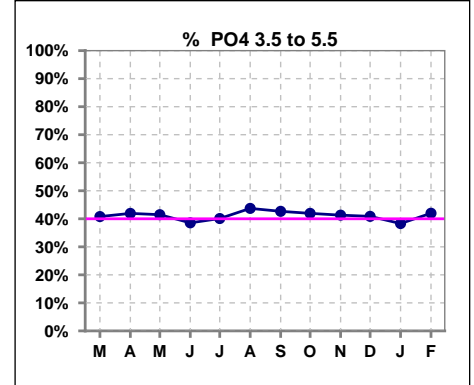


Methodology: a) All labs for 'Adequacy of Dialysis', 'Nutrition', 'Osteodystrophy', 'Anemia' and 'Diabetes' based on last value of month; b) BP's and #L processed are average of all values for month; c) Access data takes last access of month; d) Values for SGA and 'Infection Control' use most recent result.

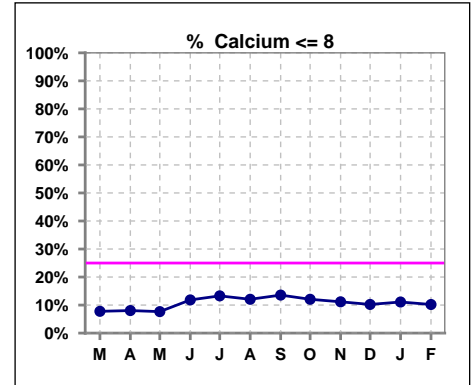
Lab methodology for PTH changed January 2012

III. OSTEODYSTROPHY

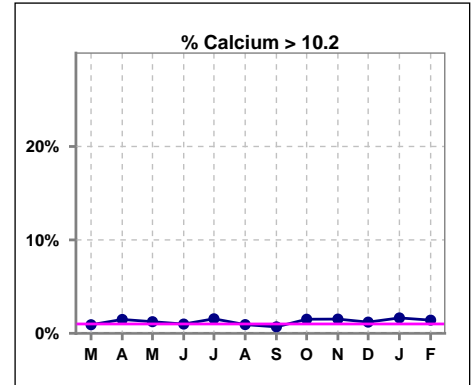
	Mar	Apr	May	Jun	Jul	Aug	Sep	Oct	Nov	Dec	Jan	Feb
# PO4	1635	1617	1606	1608	1609	1606	1601	1588	1574	1583	1577	1558
# PO4 3.5 to 5.5	667	678	666	620	645	702	683	666	650	647	604	654
Pop. Mean	5.9	5.9	5.9	6.0	6.1	5.8	5.8	5.8	5.9	6.0	6.0	6.1
Std. Deviation	1.94	1.88	1.91	1.87	1.85	1.82	1.81	1.89	1.85	1.94	1.88	1.97
% PO4 3.5 to 5.5	41%	42%	41%	39%	40%	44%	43%	42%	41%	41%	38%	42%



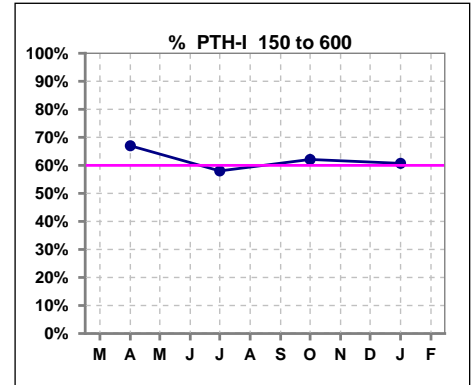
	Mar	Apr	May	Jun	Jul	Aug	Sep	Oct	Nov	Dec	Jan	Feb
# Calcium	1635	1617	1606	1613	1611	1608	1600	1591	1576	1585	1578	1559
# Calcium <= 8	127	130	123	191	214	194	217	192	176	162	175	159
Pop. Mean	9.1	9.0	9.1	8.9	8.9	8.9	8.8	8.9	8.9	8.9	8.9	9.0
Std. Deviation	0.68	0.69	0.70	0.75	0.77	0.71	0.72	0.72	0.74	0.72	0.74	0.72
% Calcium <= 8	8%	8%	8%	12%	13%	12%	14%	12%	11%	10%	11%	10%



	Mar	Apr	May	Jun	Jul	Aug	Sep	Oct	Nov	Dec	Jan	Feb
# Calcium	1635	1617	1606	1613	1611	1608	1600	1591	1576	1585	1578	1559
# Calcium > 10.2	15	24	20	16	25	15	11	24	24	19	26	22
Pop. Mean	9.1	9.0	9.1	8.9	8.9	8.9	8.8	8.9	8.9	8.9	8.9	9.0
Std. Deviation	0.68	0.69	0.70	0.75	0.77	0.71	0.72	0.72	0.74	0.72	0.74	0.72
% Calcium > 10.2	1%	1%	1%	1%	2%	1%	1%	2%	2%	1%	2%	1%



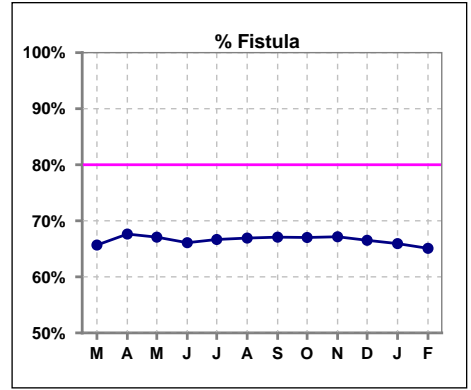
	Mar	Apr	May	Jun	Jul	Aug	Sep	Oct	Nov	Dec	Jan	Feb
# PTH-I		1612			1596			1578			1576	
# PTH-I 150 to 600		1080			926			980			957	
Pop. Mean		470			563			529			510	
Std. Deviation		417			475			445			450	
% PTH-I 150 to 600		67%			58%			62%			61%	



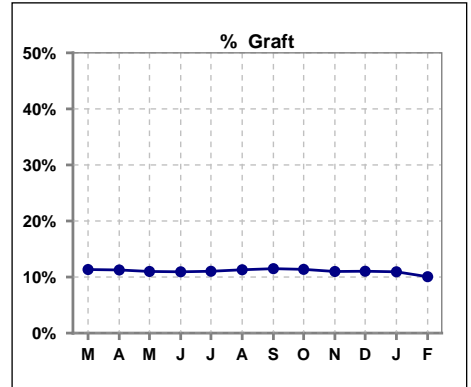
Methodology: a) All labs for 'Adequacy of Dialysis', 'Nutrition', 'Osteodystrophy', 'Anemia' and 'Diabetes' based on last value of month; b) BP's and #L processed are average of all values for month; c) Access data takes last access of month; d) Values for SGA and 'Infection Control' use most recent result.

IV. ACCESS

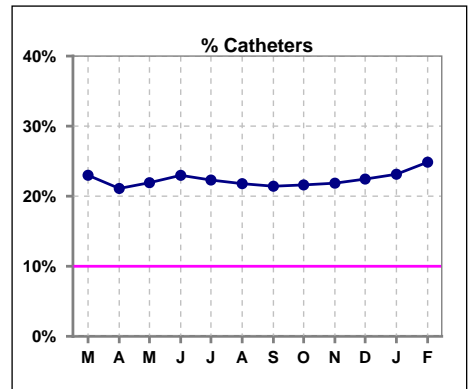
	Mar	Apr	May	Jun	Jul	Aug	Sep	Oct	Nov	Dec	Jan	Feb
# Access	1640	1616	1610	1619	1614	1611	1601	1592	1583	1586	1582	1561
# Fistula	1077	1093	1080	1070	1076	1078	1074	1067	1063	1055	1043	1016
% Fistula	66%	68%	67%	66%	67%	67%	67%	67%	67%	67%	66%	65%



	Mar	Apr	May	Jun	Jul	Aug	Sep	Oct	Nov	Dec	Jan	Feb
# Access	1640	1616	1610	1619	1614	1611	1601	1592	1583	1586	1582	1561
# Graft	186	182	177	177	178	182	184	181	174	175	173	157
% Graft	11%	11%	11%	11%	11%	11%	11%	11%	11%	11%	11%	10%



	Mar	Apr	May	Jun	Jul	Aug	Sep	Oct	Nov	Dec	Jan	Feb
# Access	1640	1616	1610	1619	1614	1611	1601	1592	1583	1586	1582	1561
# Catheters	377	341	353	372	360	351	343	344	346	356	366	388
% Catheters	23%	21%	22%	23%	22%	22%	21%	22%	22%	22%	23%	25%



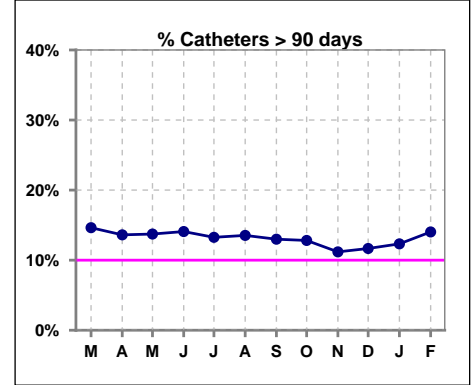
Methodology: a) All labs for 'Adequacy of Dialysis', 'Nutrition', 'Osteodystrophy', 'Anemia' and 'Diabetes' based on last value of month; b) BP's and #L processed are average of all values for month; c) Access data takes last access of month; d) Values for SGA and 'Infection Control' use most recent result.

IV. ACCESS - CONT.

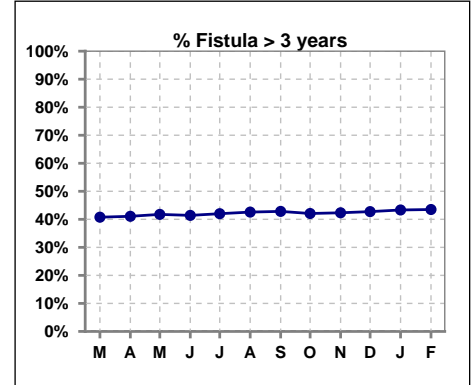
Catheters > 90 days

	Mar	Apr	May	Jun	Jul	Aug	Sep	Oct	Nov	Dec	Jan	Feb
# Access	1640	1616	1610	1619	1614	1611	1601	1592	1583	1586	1582	1561
# Catheters	240	220	221	228	214	218	208	204	177	185	195	219
% Catheters	15%	14%	14%	14%	13%	14%	13%	13%	11%	12%	12%	14%

Definition: Catheter in use on last treatment of the month



	Mar	Apr	May	Jun	Jul	Aug	Sep	Oct	Nov	Dec	Jan	Feb
# Fistula	1077	1093	1080	1070	1076	1078	1074	1067	1063	1055	1043	1016
# Fistula > 3 yrs	439	449	451	443	452	459	460	449	450	451	452	442
% Fistula > 3 yrs	41%	41%	42%	41%	42%	43%	43%	42%	42%	43%	43%	44%

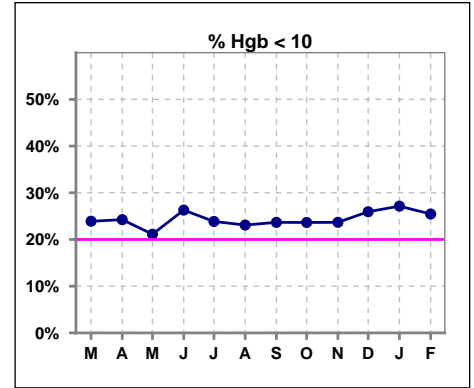


Methodology: a) All labs for 'Adequacy of Dialysis', 'Nutrition', 'Osteodystrophy', 'Anemia' and 'Diabetes' based on last value of month; b) BP's and #L processed are average of all values for month; c) Access data takes last access of month; d) Values for SGA and 'Infection Control' use most recent result.

V. ANEMIA

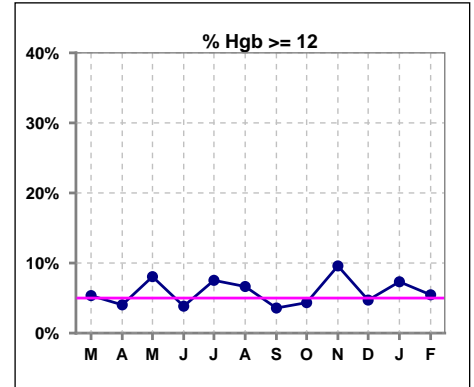
	Mar	Apr	May	Jun	Jul	Aug	Sep	Oct	Nov	Dec	Jan	Feb
# Hgb	1439	1415	1415	1381	1421	1399	1369	1358	1356	1338	1393	1336
# Hgb < 10	344	343	299	363	339	323	324	321	321	347	378	340
Pop. Mean	10.6	10.6	10.7	10.5	10.6	10.6	10.5	10.6	10.7	10.5	10.5	10.6
Std. Deviation	1.2	1.2	1.2	1.2	1.3	1.3	1.2	1.2	1.3	1.2	1.3	1.2
% Hgb < 10	24%	24%	21%	26%	24%	23%	24%	24%	24%	26%	27%	25%

Note: Excludes patients who received no ESA in month.



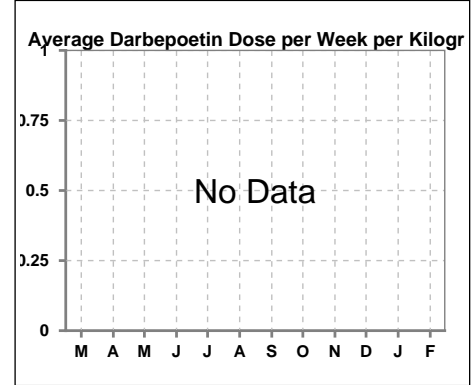
	Mar	Apr	May	Jun	Jul	Aug	Sep	Oct	Nov	Dec	Jan	Feb
# Hgb	1439	1415	1415	1381	1421	1399	1369	1358	1356	1338	1393	1336
# Hgb >= 12	77	57	114	53	107	93	49	59	130	63	102	73
Pop. Mean	10.6	10.6	10.7	10.5	10.6	10.6	10.5	10.6	10.7	10.5	10.5	10.6
Std. Deviation	1.2	1.2	1.2	1.2	1.3	1.3	1.2	1.2	1.3	1.2	1.3	1.2
% Hgb >= 12	5%	4%	8%	4%	8%	7%	4%	4%	10%	5%	7%	5%

Note: Excludes patients who received no ESA in month.



Average Darbepoetin Dose per Week per Kilogram

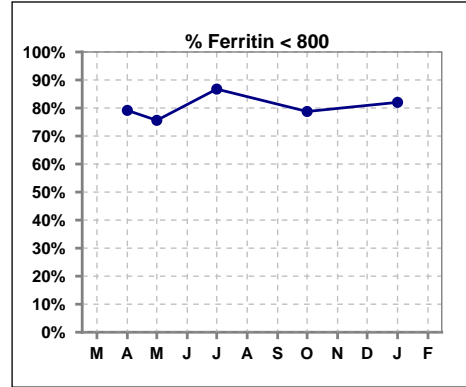
	Mar	Apr	May	Jun	Jul	Aug	Sep	Oct	Nov	Dec	Jan	Feb
# Average Darbepoetin												



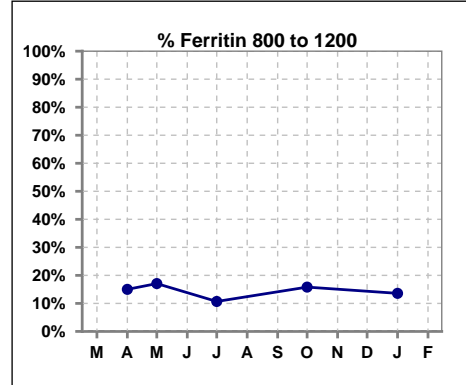
V. ANEMIA - CONT.

Iron Profile

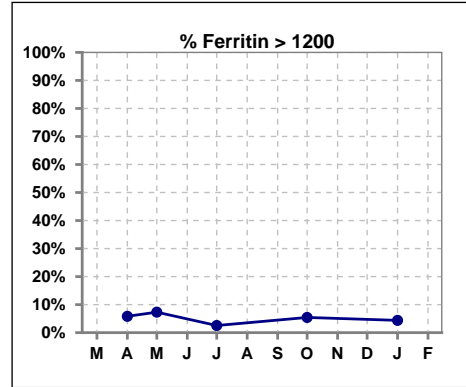
	Mar	Apr	May	Jun	Jul	Aug	Sep	Oct	Nov	Dec	Jan	Feb
# Ferritin		1612	123		1609			1587			1575	
# Ferritin < 800		1276	93		1396			1250			1292	
Pop. Mean		520	543		455			520			487	
Std. Deviation		375	427		321			378			358	
% Ferritin < 800		79%	76%		87%			79%			82%	



	Mar	Apr	May	Jun	Jul	Aug	Sep	Oct	Nov	Dec	Jan	Feb
# Ferritin		1612	123		1609			1587			1575	
# Ferritin 800 to 1200		242	21		172			251			214	
Pop. Mean		520	543		455			520			487	
Std. Deviation		375	427		321			378			358	
% Ferritin 800 to 1200		15%	17%		11%			16%			14%	

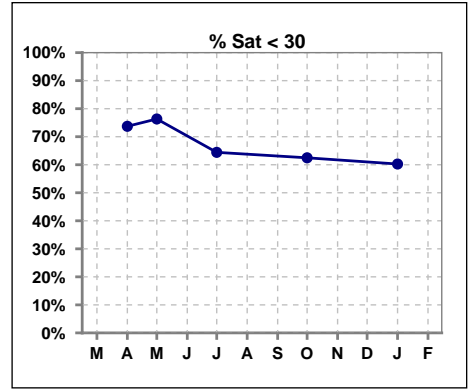


	Mar	Apr	May	Jun	Jul	Aug	Sep	Oct	Nov	Dec	Jan	Feb
# Ferritin		1612	123		1609			1587			1575	
# Ferritin > 1200		94	9		41			86			69	
Pop. Mean		520	543		455			520			487	
Std. Deviation		375	427		321			378			358	
% Ferritin > 1200		6%	7%		3%			5%			4%	

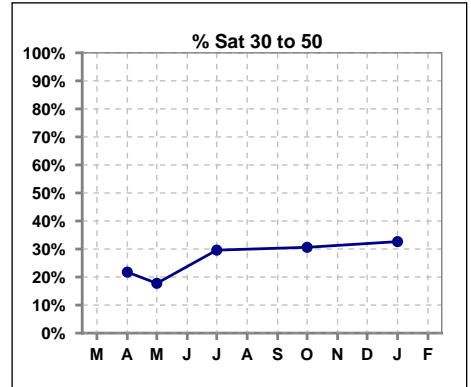


V. ANEMIA - CONT.

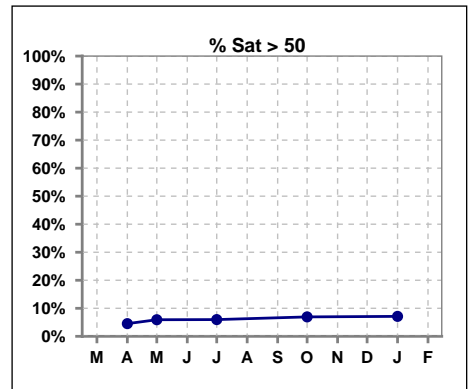
	Mar	Apr	May	Jun	Jul	Aug	Sep	Oct	Nov	Dec	Jan	Feb
# % Sat		1613	169		1608			1588			1575	
# % Sat < 30		1189	129		1036			992			949	
Pop. Mean		25	25		28			29			29	
Std. Deviation		13	15		14			14			14	
% % Sat < 30		74%	76%		64%			62%			60%	



	Mar	Apr	May	Jun	Jul	Aug	Sep	Oct	Nov	Dec	Jan	Feb
# % Sat		1613	169		1608			1588			1575	
# % Sat 30 to 50		351	30		476			486			514	
Pop. Mean		25	25		28			29			29	
Std. Deviation		13	15		14			14			14	
% % Sat 30 to 50		22%	18%		30%			31%			33%	



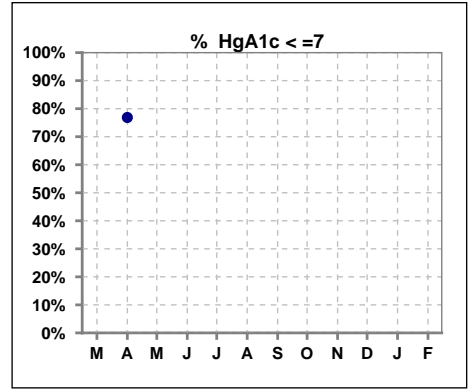
	Mar	Apr	May	Jun	Jul	Aug	Sep	Oct	Nov	Dec	Jan	Feb
# % Sat		1613	169		1608			1588			1575	
# % Sat > 50		73	10		96			110			112	
Pop. Mean		25	25		28			29			29	
Std. Deviation		13	15		14			14			14	
% % Sat > 50		5%	6%		6%			7%			7%	



Methodology: a) All labs for 'Adequacy of Dialysis', 'Nutrition', 'Osteodystrophy', 'Anemia' and 'Diabetes' based on last value of month; b) BP's and #L processed are average of all values for month; c) Access data takes last access of month; d) Values for SGA and 'Infection Control' use most recent result.

VI. Diabetes

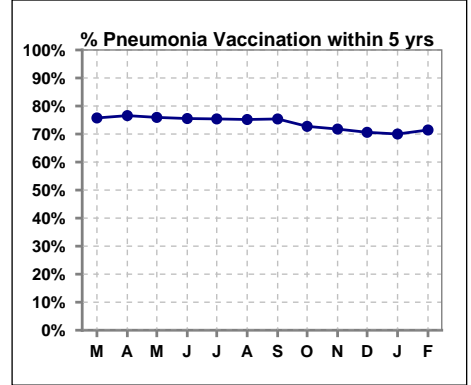
	Mar	Apr	May	Jun	Jul	Aug	Sep	Oct	Nov	Dec	Jan	Feb
# HgA1c		968										
# HgA1c <= 7		744										
Pop. Mean		6.3										
Std. Deviation		1.49										
% HgA1c <= 7		77%										



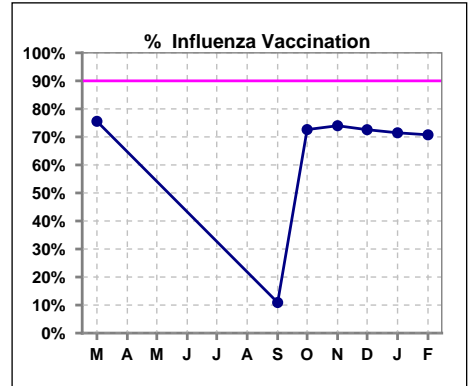
VII. Infection Control

Pneumonia vaccination within the past five years

	Mar	Apr	May	Jun	Jul	Aug	Sep	Oct	Nov	Dec	Jan	Feb
# Patient	1645	1622	1613	1619	1618	1612	1605	1596	1584	1586	1584	1569
# Pneumonia	1246	1242	1225	1223	1220	1212	1210	1161	1137	1120	1109	1121
% Pneumonia	76%	77%	76%	76%	75%	75%	75%	73%	72%	71%	70%	71%



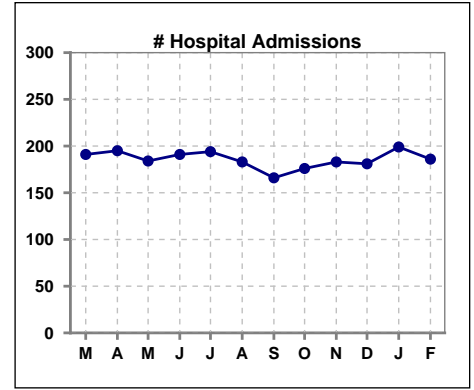
	Mar	Apr	May	Jun	Jul	Aug	Sep	Oct	Nov	Dec	Jan	Feb
# Patient	1645						1605	1596	1584	1586	1584	1569
# Influenza	1243						175	1159	1172	1151	1132	1110
% Influenza	76%						11%	73%	74%	73%	71%	71%



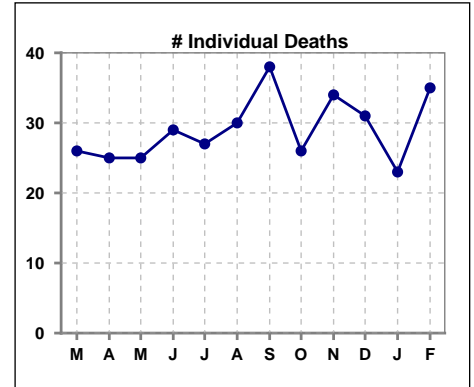
Methodology: a) All labs for 'Adequacy of Dialysis', 'Nutrition', 'Osteodystrophy', 'Anemia' and 'Diabetes' based on last value of month; b) BP's and #L processed are average of all values for month; c) Access data takes last access of month; d) Values for SGA and 'Infection Control' use most recent result.

VIII. Outcome measures

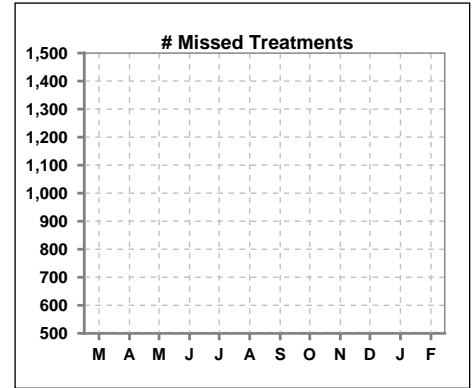
	Mar	Apr	May	Jun	Jul	Aug	Sep	Oct	Nov	Dec	Jan	Feb
# Patient	1645	1622	1613	1619	1618	1612	1605	1596	1584	1586	1584	1569
# Hospital Admissions	191	195	184	191	194	183	166	176	183	181	199	186



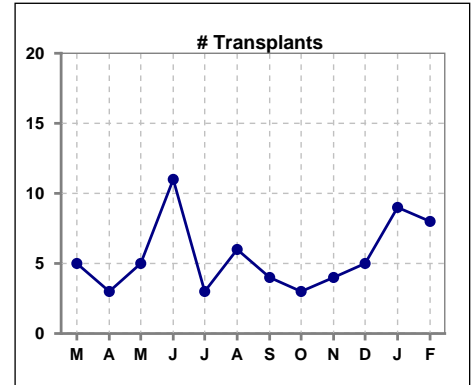
	Mar	Apr	May	Jun	Jul	Aug	Sep	Oct	Nov	Dec	Jan	Feb
# Patient	1645	1622	1613	1619	1618	1612	1605	1596	1584	1586	1584	1569
# Individual Deaths	26	25	25	29	27	30	38	26	34	31	23	35



	Mar	Apr	May	Jun	Jul	Aug	Sep	Oct	Nov	Dec	Jan	Feb
# Patient	1645	1622	1613	1619	1618	1612	1605	1596	1584	1586	1584	1569
# Missed Treatments	1802	1730	1825	1715	1854	1774	1690	1855	1755	1950	1890	1681



	Mar	Apr	May	Jun	Jul	Aug	Sep	Oct	Nov	Dec	Jan	Feb
# Patient	1645	1622	1613	1619	1618	1612	1605	1596	1584	1586	1584	1569
# Transplants	5	3	5	11	3	6	4	3	4	5	9	8



Methodology: a) All labs for 'Adequacy of Dialysis', 'Nutrition', 'Osteodystrophy', 'Anemia' and 'Diabetes' based on last value of month; b) BP's and #L processed are average of all values for month; c) Access data takes last access of month; d) Values for SGA and 'Infection Control' use most recent result.