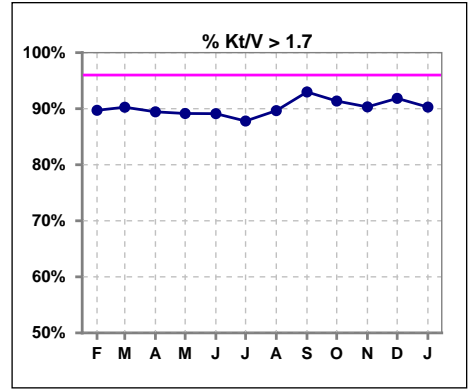
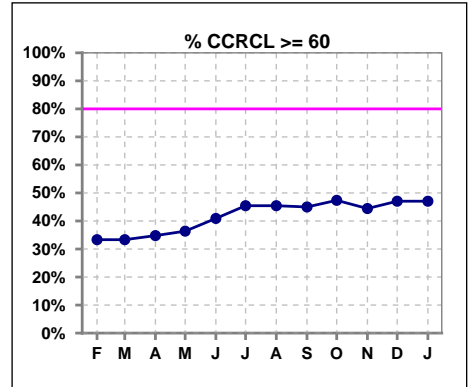


I. ADEQUACY OF DIALYSIS

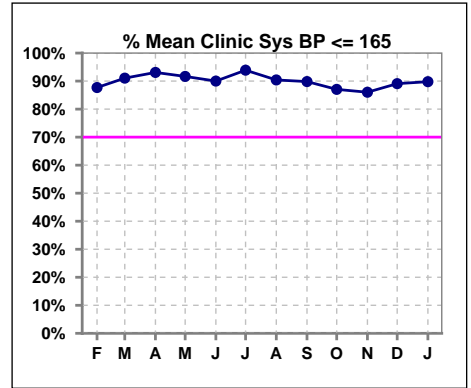
	Feb	Mar	Apr	May	Jun	Jul	Aug	Sep	Oct	Nov	Dec	Jan
# Kt/V - CA/CC PD	311	308	303	304	294	295	290	285	278	279	282	278
# Kt/V >= 1.7	279	278	271	271	262	259	260	265	254	252	259	251
Pop. Mean	2.10	2.11	2.09	2.09	2.08	2.09	2.08	2.10	2.07	2.12	2.14	2.11
Std. Deviation	0.50	0.51	0.49	0.47	0.50	0.53	0.49	0.46	0.44	0.71	0.75	0.59
% Kt/V >= 1.7	90%	90%	89%	89%	89%	88%	90%	93%	91%	90%	92%	90%



	Feb	Mar	Apr	May	Jun	Jul	Aug	Sep	Oct	Nov	Dec	Jan
# CRCL CA/CC PD	24	24	23	22	22	22	22	20	19	18	17	17
# CCRCL >= 60	8	8	8	8	9	10	10	9	9	8	8	8
Pop. Mean	65.12	65.12	65.68	67.01	69.06	74.15	74.15	74.71	76.73	75.43	76.92	76.92
Std. Deviation	27.61	27.61	28.09	28.00	28.21	37.97	37.97	39.05	39.03	39.73	40.43	40.43
% CCRCL >= 60	33%	33%	35%	36%	41%	45%	45%	45%	47%	44%	47%	47%



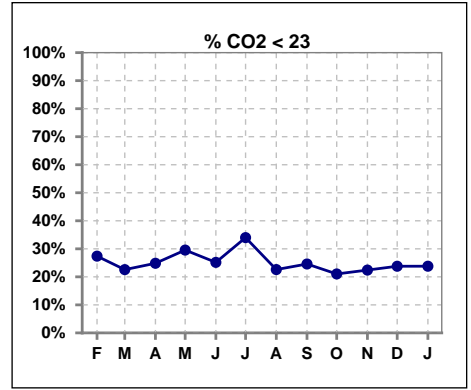
	Feb	Mar	Apr	May	Jun	Jul	Aug	Sep	Oct	Nov	Dec	Jan
# Mean Clinic Sys BP	317	313	304	300	300	295	292	285	278	272	284	284
# Sys BP <= 165	280	289	286	277	272	279	267	260	244	240	254	255
Pop. Mean	141	140	139	138	138	136	138	140	140	143	139	139
Std. Deviation	19.4	61.6	23.7	19.2	33.2	18.5	19.5	61.9	20.3	32.3	20.3	19.8
% Sys BP <=165	88%	91%	93%	92%	90%	94%	90%	90%	87%	86%	89%	90%



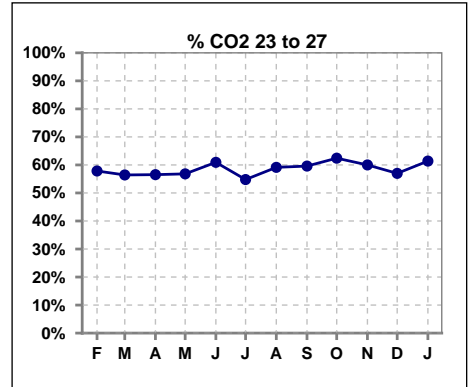
Methodology: a) Kt/V, CRCL and nPNa values are 4 month rolling mean of last value for each month, all other report lab results are based on last value of month; b) BP's are average of all values for month.

I. ADEQUACY OF DIALYSIS - CONT.

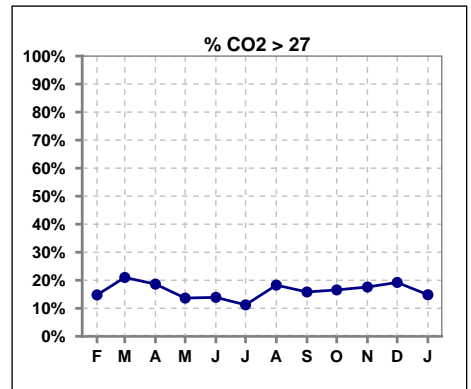
	Feb	Mar	Apr	May	Jun	Jul	Aug	Sep	Oct	Nov	Dec	Jan
# CO2	325	319	306	308	302	303	301	297	290	290	286	290
# CO2 < 23	89	72	76	91	76	103	68	73	61	65	68	69
Pop. Mean	24	25	25	24	24	24	25	25	25	25	25	24
Std. Deviation	3.24	3.11	3.17	5.20	3.04	3.23	3.31	3.10	3.11	3.23	3.20	3.27
% CO2 < 23	27%	23%	25%	30%	25%	34%	23%	25%	21%	22%	24%	24%



	Feb	Mar	Apr	May	Jun	Jul	Aug	Sep	Oct	Nov	Dec	Jan
# CO2	325	319	306	308	302	303	301	297	290	290	286	290
# CO2 23 to 27	188	180	173	175	184	166	178	177	181	174	163	178
Pop. Mean	24	25	25	24	24	24	25	25	25	25	25	24
Std. Deviation	3.24	3.11	3.17	5.20	3.04	3.23	3.31	3.10	3.11	3.23	3.20	3.27
% CO2 23 to 27	58%	56%	57%	57%	61%	55%	59%	60%	62%	60%	57%	61%



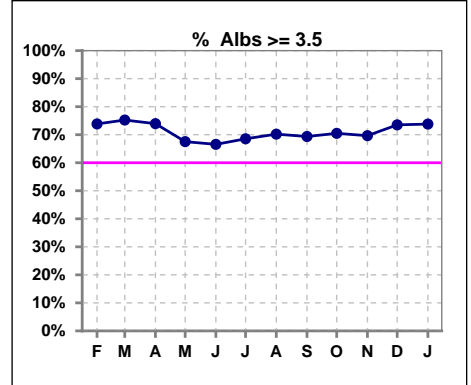
	Feb	Mar	Apr	May	Jun	Jul	Aug	Sep	Oct	Nov	Dec	Jan
# CO2	325	319	306	308	302	303	301	297	290	290	286	290
# CO2 > 27	48	67	57	42	42	34	55	47	48	51	55	43
Pop. Mean	24	25	25	24	24	24	25	25	25	25	25	24
Std. Deviation	3.24	3.11	3.17	5.20	3.04	3.23	3.31	3.10	3.11	3.23	3.20	3.27
% CO2 > 27	15%	21%	19%	14%	14%	11%	18%	16%	17%	18%	19%	15%



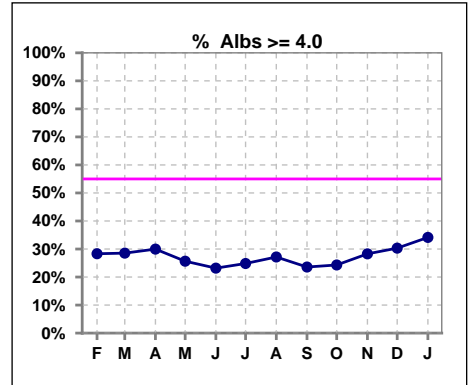
*Albumin values use BCG method - as of July 2001

II. NUTRITION

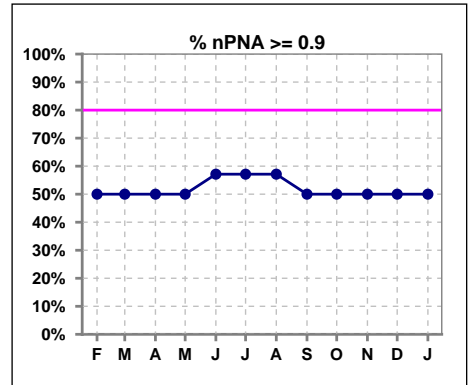
	Feb	Mar	Apr	May	Jun	Jul	Aug	Sep	Oct	Nov	Dec	Jan
# Albumin	325	319	307	308	302	302	302	297	288	290	287	290
# Albumin >= 3.5	240	240	227	208	201	207	212	206	203	202	211	214
Pop. Mean	3.7	3.7	3.7	3.6	3.6	3.6	3.6	3.6	3.6	3.7	3.7	3.7
Std. Deviation	0.43	0.45	0.46	0.44	0.43	0.43	0.44	0.44	0.46	0.46	0.45	0.46
% Alb >= 3.5	74%	75%	74%	68%	67%	69%	70%	69%	70%	70%	74%	74%



	Feb	Mar	Apr	May	Jun	Jul	Aug	Sep	Oct	Nov	Dec	Jan
# Albumin	325	319	307	308	302	302	302	297	288	290	287	290
# Albumin >= 4.0	92	91	92	79	70	75	82	70	70	82	87	99
Pop. Mean	3.7	3.7	3.7	3.6	3.6	3.6	3.6	3.6	3.6	3.7	3.7	3.7
Std. Deviation	0.43	0.45	0.46	0.44	0.43	0.43	0.44	0.44	0.46	0.46	0.45	0.46
% Alb >= 4.0	28%	29%	30%	26%	23%	25%	27%	24%	24%	28%	30%	34%



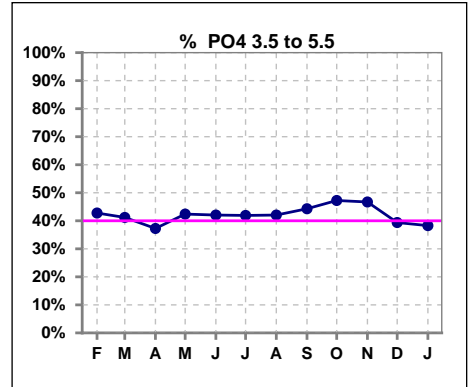
	Feb	Mar	Apr	May	Jun	Jul	Aug	Sep	Oct	Nov	Dec	Jan
# nPNA	8	8	8	8	7	7	7	6	6	6	6	6
# nPNA >= 0.9	4	4	4	4	4	4	4	3	3	3	3	3
Pop. Mean	1.1	1.1	1.1	1.1	1.1	1.0	1.0	1.0	1.0	1.0	1.0	1.0
Std. Deviation	0.39	0.39	0.39	0.39	0.40	0.28	0.28	0.30	0.30	0.30	0.30	0.30
% nPNA >= 0.9	50%	50%	50%	50%	57%	57%	57%	50%	50%	50%	50%	50%



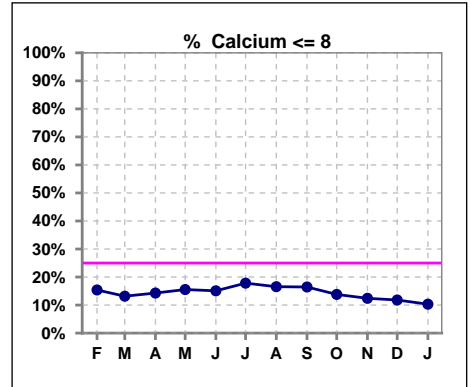
Lab methodology for PTH changed January 2012

III. OSTEODYSTROPHY

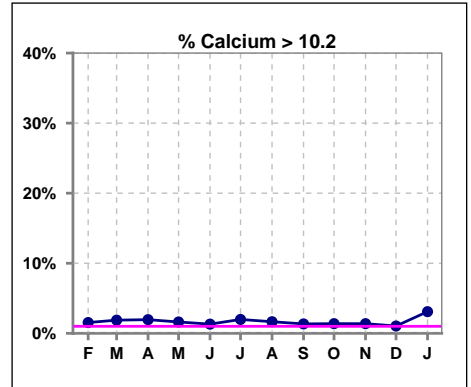
	Feb	Mar	Apr	May	Jun	Jul	Aug	Sep	Oct	Nov	Dec	Jan
# PO4	325	318	306	309	302	303	302	298	290	289	287	290
# PO4 3.5 to 5.5	139	131	114	131	127	127	127	132	137	135	113	111
Pop. Mean	6.0	6.0	6.1	6.0	6.1	6.0	6.0	5.9	5.8	5.9	6.0	6.1
Std. Deviation	1.86	1.82	1.79	1.72	1.76	1.77	1.68	1.65	1.72	1.60	1.65	1.87
% PO4 3.5 to 5.5	43%	41%	37%	42%	42%	42%	42%	44%	47%	47%	39%	38%



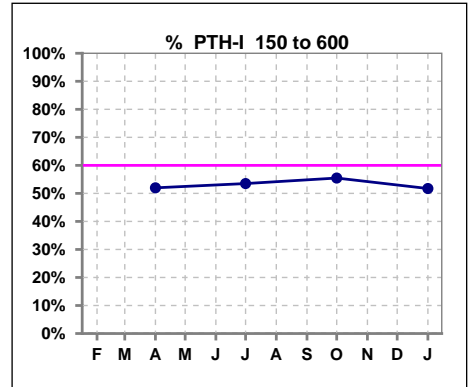
	Feb	Mar	Apr	May	Jun	Jul	Aug	Sep	Oct	Nov	Dec	Jan
# Calcium	325	319	308	309	305	303	302	298	290	290	288	291
# Calcium <= 8	50	42	44	48	46	54	50	49	40	36	34	30
Pop. Mean	8.8	8.8	8.8	8.8	8.7	8.8	8.8	8.8	8.8	8.8	8.9	8.9
Std. Deviation	0.74	0.76	0.75	0.77	0.70	0.72	0.75	0.78	0.73	0.73	0.73	0.71
% Calcium <= 8	15%	13%	14%	16%	15%	18%	17%	16%	14%	12%	12%	10%



	Feb	Mar	Apr	May	Jun	Jul	Aug	Sep	Oct	Nov	Dec	Jan
# Calcium	325	319	308	309	305	303	302	298	290	290	288	291
# Calcium > 10.2	5	6	6	5	4	6	5	4	4	4	3	9
Pop. Mean	8.8	8.8	8.8	8.8	8.7	8.8	8.8	8.8	8.8	8.8	8.9	8.9
Std. Deviation	0.74	0.76	0.75	0.77	0.70	0.72	0.75	0.78	0.73	0.73	0.73	0.71
% Calcium > 10.2	2%	2%	2%	2%	1%	2%	2%	1%	1%	1%	1%	3%



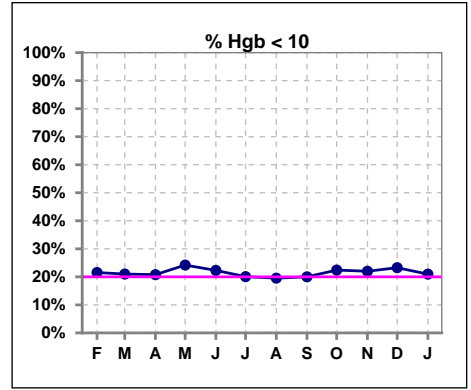
	Feb	Mar	Apr	May	Jun	Jul	Aug	Sep	Oct	Nov	Dec	Jan
# PTH-I			302			299			283			288
# PTH-I 150 to 600			157			160			157			149
Pop. Mean			511			570			506			516
Std. Deviation			495			525			459			513
% PTH-I 150 to 600			52%			54%			55%			52%



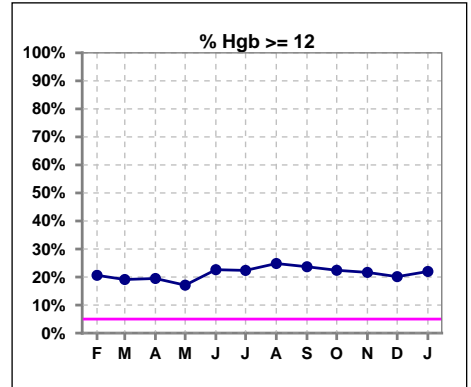
Methodology: a) KtV, CRCL and nPNa values are 4 month rolling mean of last value for each month, all other report lab results are based on last value of month; b) BP's are average of all values for month.

IV. ANEMIA

	Feb	Mar	Apr	May	Jun	Jul	Aug	Sep	Oct	Nov	Dec	Jan
# Hgb	325	319	308	310	305	304	302	300	290	291	288	291
# Hgb < 10	70	67	64	75	68	61	59	60	65	64	67	61
Pop. Mean	10.9	10.9	10.9	10.8	11.0	11.0	11.1	11.0	11.0	10.9	11.0	11.0
Std. Deviation	1.5	1.4	1.4	1.4	1.5	1.4	1.5	1.5	1.6	1.6	1.5	1.7
% Hgb < 10	22%	21%	21%	24%	22%	20%	20%	20%	22%	22%	23%	21%



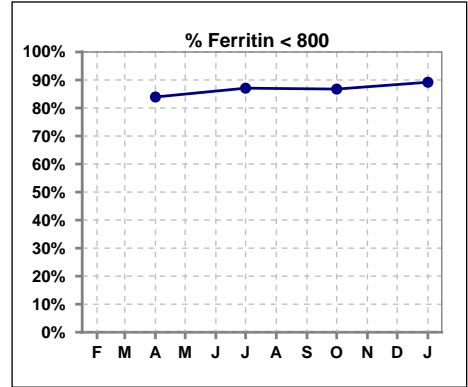
	Feb	Mar	Apr	May	Jun	Jul	Aug	Sep	Oct	Nov	Dec	Jan
# Hgb	325	319	308	310	305	304	302	300	290	291	288	291
# Hgb >= 12	67	61	60	53	69	68	75	71	65	63	58	64
Pop. Mean	10.9	10.9	10.9	10.8	11.0	11.0	11.1	11.0	11.0	10.9	11.0	11.0
Std. Deviation	1.5	1.4	1.4	1.4	1.5	1.4	1.5	1.5	1.6	1.6	1.5	1.7
% Hgb >= 12	21%	19%	19%	17%	23%	22%	25%	24%	22%	22%	20%	22%



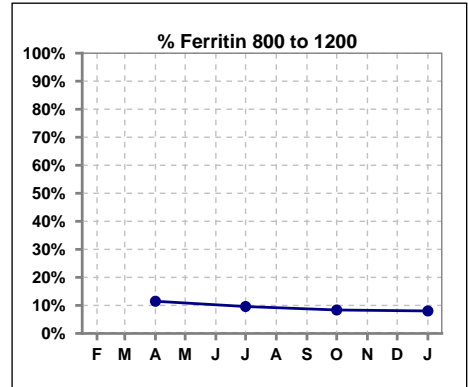
IV. ANEMIA - CONT.

Iron Profile

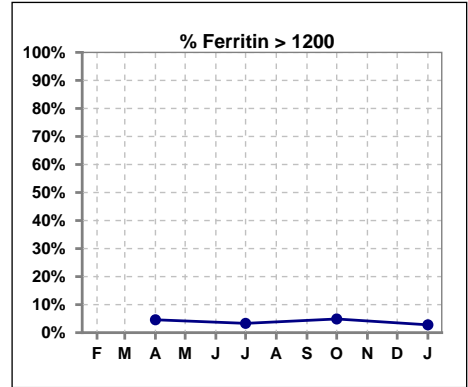
	Feb	Mar	Apr	May	Jun	Jul	Aug	Sep	Oct	Nov	Dec	Jan
# Ferritin			305			302			287			287
# Ferritin < 800			256			263			249			256
Pop. Mean			446			430			452			404
Std. Deviation			390			398			503			352
% Ferritin < 800			84%			87%			87%			89%



	Feb	Mar	Apr	May	Jun	Jul	Aug	Sep	Oct	Nov	Dec	Jan
# Ferritin			305			302			287			287
# Ferritin 800 to 1200			35			29			24			23
Pop. Mean			446			430			452			404
Std. Deviation			390			398			503			352
% Ferritin 800 to 1200			11%			10%			8%			8%

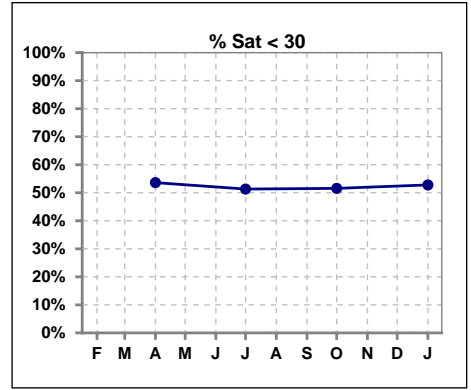


	Feb	Mar	Apr	May	Jun	Jul	Aug	Sep	Oct	Nov	Dec	Jan
# Ferritin			305			302			287			287
# Ferritin > 1200			14			10			14			8
Pop. Mean			446			430			452			404
Std. Deviation			390			398			503			352
% Ferritin > 1200			5%			3%			5%			3%

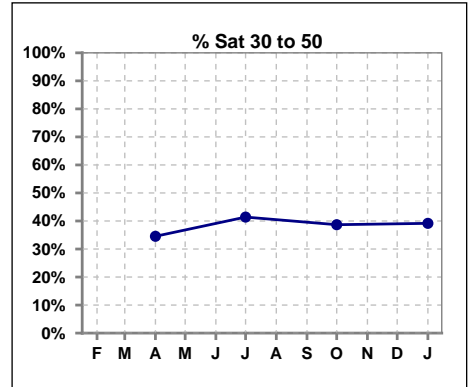


IV. ANEMIA - CONT.

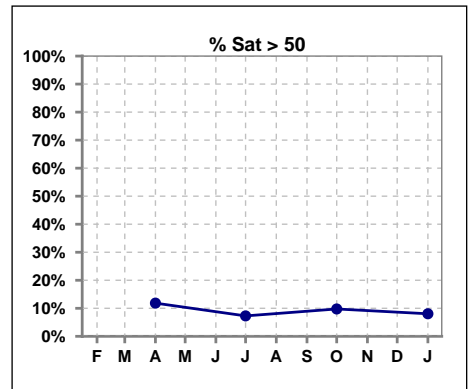
	Feb	Mar	Apr	May	Jun	Jul	Aug	Sep	Oct	Nov	Dec	Jan
# % Sat			304			302			287			286
# % Sat < 30			163			155			148			151
Pop. Mean			31			31			32			31
Std. Deviation			16			14			16			15
% % Sat < 30			54%			51%			52%			53%



	Feb	Mar	Apr	May	Jun	Jul	Aug	Sep	Oct	Nov	Dec	Jan
# % Sat			304			302			287			286
# % Sat 30 to 50			105			125			111			112
Pop. Mean			31			31			32			31
Std. Deviation			16			14			16			15
% Sat% 30 to 50			35%			41%			39%			39%

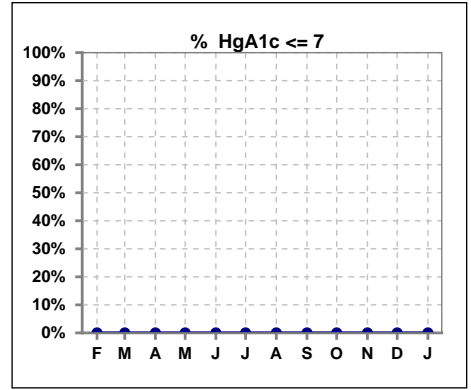


	Feb	Mar	Apr	May	Jun	Jul	Aug	Sep	Oct	Nov	Dec	Jan
# % Sat			304			302			287			286
# % Sat > 50			36			22			28			23
Pop. Mean			31			31			32			31
Std. Deviation			16			14			16			15
% Sat% > 50			12%			7%			10%			8%



V. Diabetes

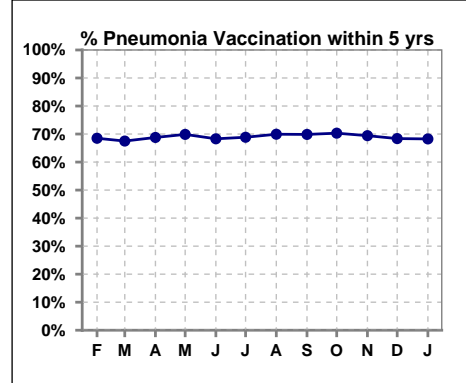
	Feb	Mar	Apr	May	Jun	Jul	Aug	Sep	Oct	Nov	Dec	Jan
# HgA1c	0	0	0	0	0	0	0	0	0	0	0	0
# HgA1c <= 7	0	0	0	0	0	0	0	0	0	0	0	0
Pop. Mean	0	0	0	0	0	0	0	0	0	0	0	0
Std. Deviation	0	0	0	0	0	0	0	0	0	0	0	0
% HgA1c <= 7	0%	0%	0%	0%	0%	0%	0%	0%	0%	0%	0%	0%



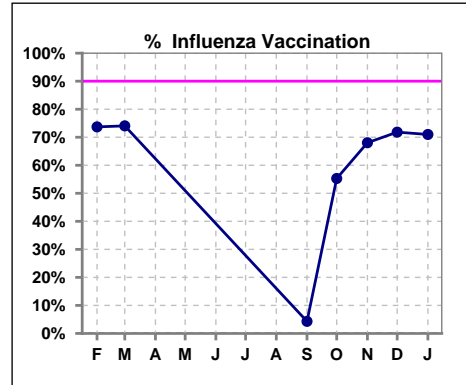
VI. Infection Control

Pneumonia vaccination within the past five years

	Feb	Mar	Apr	May	Jun	Jul	Aug	Sep	Oct	Nov	Dec	Jan
# Patient	327	320	314	312	306	305	306	302	293	291	291	293
# Pneumonia	224	216	216	218	209	210	214	211	206	202	199	200
% Pneumonia	69%	68%	69%	70%	68%	69%	70%	70%	70%	69%	68%	68%



	Feb	Mar	Apr	May	Jun	Jul	Aug	Sep	Oct	Nov	Dec	Jan
# Patient	327	320						302	293	291	291	293
# Influenza	241	237						13	162	198	209	208
% Influenza	74%	74%						4%	55%	68%	72%	71%



Exit Site Infection Rate

	Feb	Mar	Apr	May	Jun	Jul	Aug	Sep	Oct	Nov	Dec	Jan
Current Month	284.42	0	99.23	308.45	72.41		0.299.15	96.72	145.25	141.01	145.66	288.53
Rolling Year-to-date	0.06	0.05	0.05	0.05	0.05	0.06	0.05	0.06	0.05	0.06	0.07	0.07

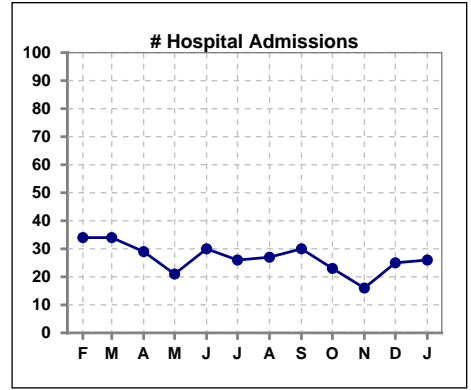
Peritonitis Infection Rate

	Feb	Mar	Apr	May	Jun	Jul	Aug	Sep	Oct	Nov	Dec	Jan
Current Month	142.21	35.41	33.08	51.41	36.21	75.28	49.86	72.54	41.50	35.25	32.37	144.26
Rolling Year-to-date	0.19	0.21	0.22	0.22	0.22	0.23	0.24	0.26	0.25	0.25	0.26	0.25

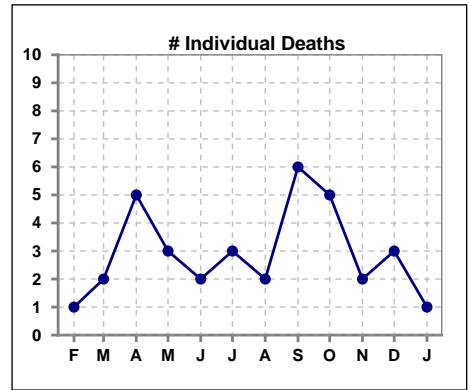
Methodology: a) Kt/V, CRCL and nPNa values are 4 month rolling mean of last value for each month, all other report lab results are based on last value of month; b) BP's are average of all values for month.

VIII. Outcome measures

	Feb	Mar	Apr	May	Jun	Jul	Aug	Sep	Oct	Nov	Dec	Jan
# Patient	327	320	314	312	306	305	306	302	293	291	291	293
# Hospital Admissions	34	34	29	21	30	26	27	30	23	16	25	26



	Feb	Mar	Apr	May	Jun	Jul	Aug	Sep	Oct	Nov	Dec	Jan
# Patient	327	320	314	312	306	305	306	302	293	291	291	293
# Individual Deaths	1	2	5	3	2	3	2	6	5	2	3	1



	Feb	Mar	Apr	May	Jun	Jul	Aug	Sep	Oct	Nov	Dec	Jan
# Patient	327	320	314	312	306	305	306	302	293	291	291	293
# Transplants	2	4	5	2	5	1	4	3	3	1	3	1

