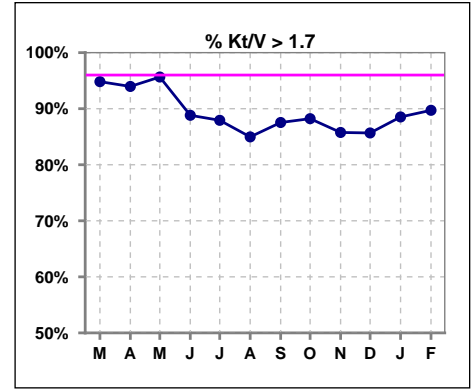
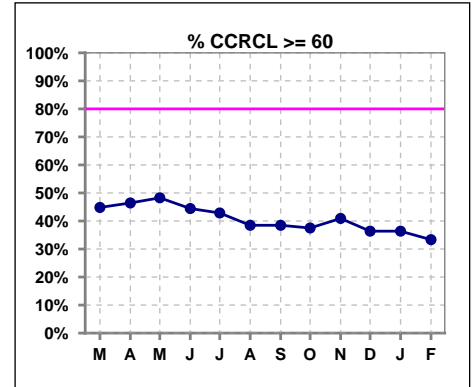


I. ADEQUACY OF DIALYSIS

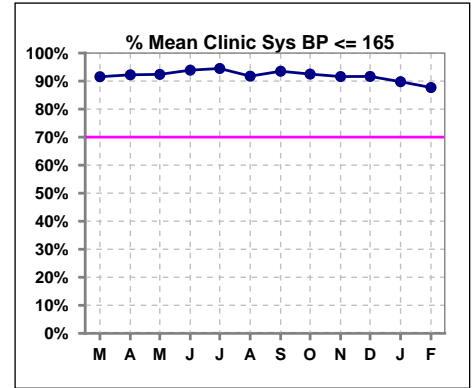
	Mar	Apr	May	Jun	Jul	Aug	Sep	Oct	Nov	Dec	Jan	Feb
# Kt/V - CA/CC PD	309	315	322	322	323	326	329	314	309	307	305	311
# Kt/V >= 1.7	293	296	308	286	284	277	288	277	265	263	270	279
Pop. Mean	2.33	2.31	2.28	2.18	2.14	2.06	2.06	2.06	2.05	2.08	2.09	2.10
Std. Deviation	0.61	0.61	0.57	0.55	0.55	0.53	0.52	0.49	0.49	0.49	0.51	0.50
% Kt/V >= 1.7	95%	94%	96%	89%	88%	85%	88%	88%	86%	86%	89%	90%



	Mar	Apr	May	Jun	Jul	Aug	Sep	Oct	Nov	Dec	Jan	Feb
# CRCL CA/CC PD	29	28	29	27	28	26	26	24	22	22	22	24
# CCRCL >= 60	13	13	14	12	12	10	10	9	9	8	8	8
Pop. Mean	67.88	68.34	69.20	67.93	67.25	65.93	65.93	66.82	68.44	66.22	66.22	65.12
Std. Deviation	26.21	26.57	26.50	26.97	26.73	27.27	27.27	28.06	28.77	28.63	28.63	27.61
% CCRCL >= 60	45%	46%	48%	44%	43%	38%	38%	38%	41%	36%	36%	33%



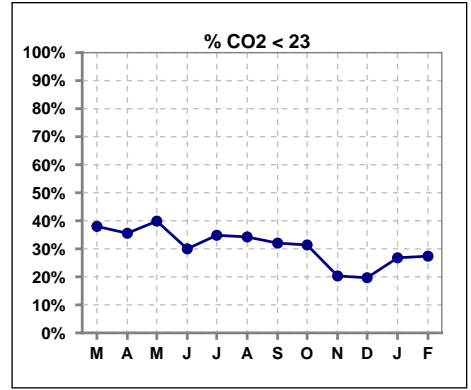
	Mar	Apr	May	Jun	Jul	Aug	Sep	Oct	Nov	Dec	Jan	Feb
# Mean Clinic Sys BP	308	322	329	328	327	328	324	320	310	300	313	317
# Sys BP <= 165	284	300	305	310	310	304	304	301	286	278	283	280
Pop. Mean	139	139	138	137	136	137	138	137	140	140	140	141
Std. Deviation	23.6	19.2	20.7	20.3	17.5	19.6	18.8	18.4	31.1	30.0	34.4	19.4
% Sys BP <=165	92%	92%	92%	94%	94%	92%	94%	93%	92%	92%	90%	88%



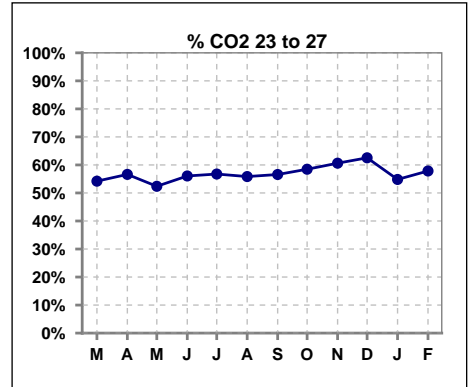
Methodology: a) Kt/V, CRCL and nPNa values are 4 month rolling mean of last value for each month, all other report lab results are based on last value of month; b) BP's are average of all values for month.

I. ADEQUACY OF DIALYSIS - CONT.

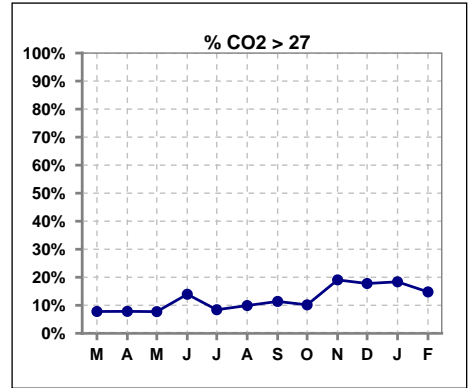
	Mar	Apr	May	Jun	Jul	Aug	Sep	Oct	Nov	Dec	Jan	Feb
# CO2	321	332	336	330	333	333	334	325	320	315	321	325
# CO2 < 23	122	118	134	99	116	114	107	102	65	62	86	89
Pop. Mean	24	23	23	24	23	24	24	24	25	25	25	24
Std. Deviation	3.10	2.97	3.03	3.44	3.36	3.17	3.29	3.13	3.05	3.07	3.22	3.24
% CO2 < 23	38%	36%	40%	30%	35%	34%	32%	31%	20%	20%	27%	27%



	Mar	Apr	May	Jun	Jul	Aug	Sep	Oct	Nov	Dec	Jan	Feb
# CO2	321	332	336	330	333	333	334	325	320	315	321	325
# CO2 23 to 27	174	188	176	185	189	186	189	190	194	197	176	188
Pop. Mean	24	23	23	24	23	24	24	24	25	25	25	24
Std. Deviation	3.10	2.97	3.03	3.44	3.36	3.17	3.29	3.13	3.05	3.07	3.22	3.24
% CO2 23 to 27	54%	57%	52%	56%	57%	56%	57%	58%	61%	63%	55%	58%



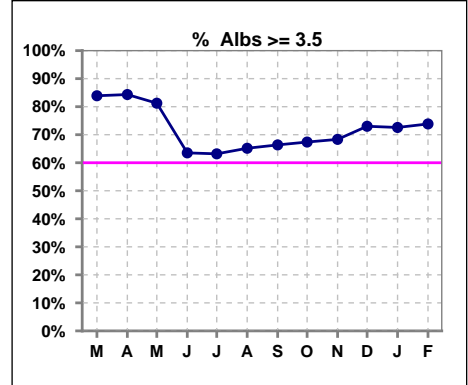
	Mar	Apr	May	Jun	Jul	Aug	Sep	Oct	Nov	Dec	Jan	Feb
# CO2	321	332	336	330	333	333	334	325	320	315	321	325
# CO2 > 27	25	26	26	46	28	33	38	33	61	56	59	48
Pop. Mean	24	23	23	24	23	24	24	24	25	25	25	24
Std. Deviation	3.10	2.97	3.03	3.44	3.36	3.17	3.29	3.13	3.05	3.07	3.22	3.24
% CO2 > 27	8%	8%	8%	14%	8%	10%	11%	10%	19%	18%	18%	15%



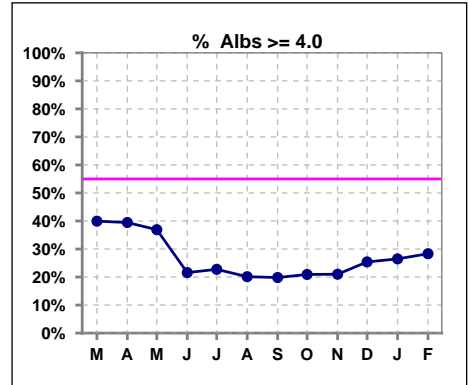
*Albumin values use BCG method - as of July 2001

II. NUTRITION

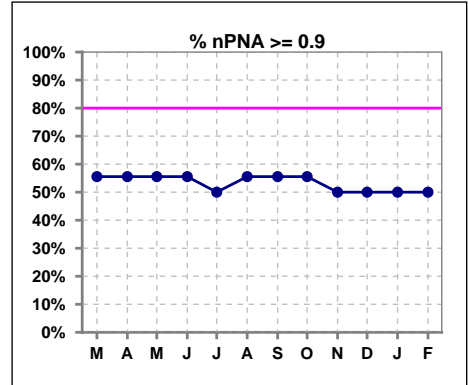
	Mar	Apr	May	Jun	Jul	Aug	Sep	Oct	Nov	Dec	Jan	Feb
# Albumin	323	332	336	329	334	333	333	325	319	315	321	325
# Albumin >= 3.5	271	280	273	209	211	217	221	219	218	230	233	240
Pop. Mean	3.8	3.8	3.8	3.6	3.6	3.6	3.6	3.6	3.6	3.7	3.7	3.7
Std. Deviation	0.38	0.37	0.39	0.43	0.43	0.44	0.43	0.43	0.42	0.41	0.43	0.43
% Alb >= 3.5	84%	84%	81%	64%	63%	65%	66%	67%	68%	73%	73%	74%



	Mar	Apr	May	Jun	Jul	Aug	Sep	Oct	Nov	Dec	Jan	Feb
# Albumin	323	332	336	329	334	333	333	325	319	315	321	325
# Albumin >= 4.0	129	131	124	71	76	67	66	68	67	80	85	92
Pop. Mean	3.8	3.8	3.8	3.6	3.6	3.6	3.6	3.6	3.6	3.7	3.7	3.7
Std. Deviation	0.38	0.37	0.39	0.43	0.43	0.44	0.43	0.43	0.42	0.41	0.43	0.43
% Alb >= 4.0	40%	39%	37%	22%	23%	20%	20%	21%	21%	25%	26%	28%



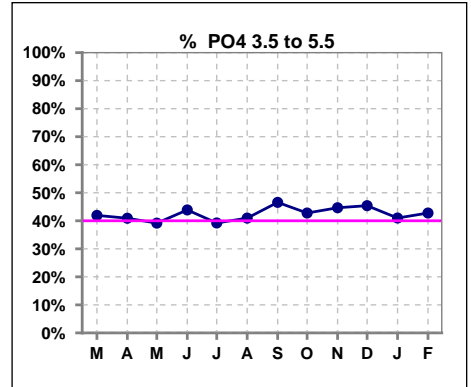
	Mar	Apr	May	Jun	Jul	Aug	Sep	Oct	Nov	Dec	Jan	Feb
# nPNA	9	9	9	9	10	9	9	9	8	8	8	8
# nPNA >= 0.9	5	5	5	5	5	5	5	5	4	4	4	4
Pop. Mean	1.1	1.1	1.1	1.1	1.0	1.1	1.1	1.1	1.1	1.1	1.1	1.1
Std. Deviation	0.37	0.37	0.37	0.37	0.36	0.36	0.36	0.36	0.39	0.39	0.39	0.39
% nPNA >= 0.9	56%	56%	56%	56%	50%	56%	56%	56%	50%	50%	50%	50%



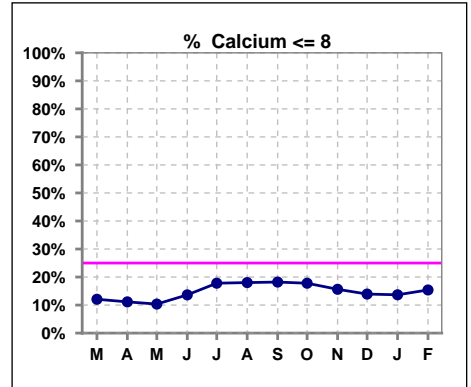
Lab methodology for PTH changed January 2012

III. OSTEODYSTROPHY

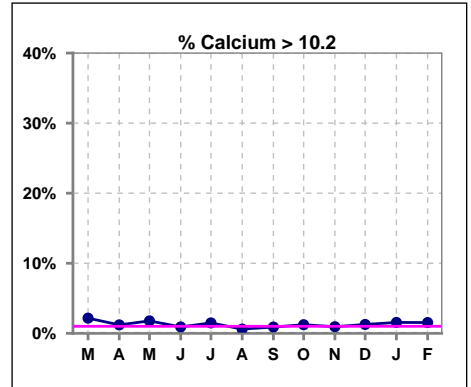
	Mar	Apr	May	Jun	Jul	Aug	Sep	Oct	Nov	Dec	Jan	Feb
# PO4	322	330	337	326	334	332	335	325	318	315	322	325
# PO4 3.5 to 5.5	135	135	132	143	131	136	156	139	142	143	132	139
Pop. Mean	5.9	5.9	6.0	6.0	6.2	6.0	5.8	5.9	5.9	6.0	6.1	6.0
Std. Deviation	1.88	1.71	1.77	1.69	1.93	1.75	1.68	1.74	1.79	1.70	1.74	1.86
% PO4 3.5 to 5.5	42%	41%	39%	44%	39%	41%	47%	43%	45%	45%	41%	43%



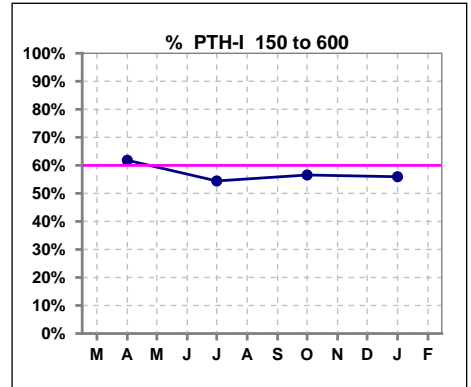
	Mar	Apr	May	Jun	Jul	Aug	Sep	Oct	Nov	Dec	Jan	Feb
# Calcium	323	332	338	330	337	333	335	326	320	316	322	325
# Calcium <= 8	39	37	35	45	60	60	61	58	50	44	44	50
Pop. Mean	8.9	8.9	9.0	8.7	8.7	8.7	8.6	8.7	8.7	8.8	8.8	8.8
Std. Deviation	0.77	0.69	0.77	0.75	0.73	0.76	0.79	0.81	0.75	0.76	0.77	0.74
% Calcium <= 8	12%	11%	10%	14%	18%	18%	18%	18%	16%	14%	14%	15%



	Mar	Apr	May	Jun	Jul	Aug	Sep	Oct	Nov	Dec	Jan	Feb
# Calcium	323	332	338	330	337	333	335	326	320	316	322	325
# Calcium > 10.2	7	4	6	3	5	2	3	4	3	4	5	5
Pop. Mean	8.9	8.9	9.0	8.7	8.7	8.7	8.6	8.7	8.7	8.8	8.8	8.8
Std. Deviation	0.77	0.69	0.77	0.75	0.73	0.76	0.79	0.81	0.75	0.76	0.77	0.74
% Calcium > 10.2	2%	1%	2%	1%	1%	1%	1%	1%	1%	1%	2%	2%



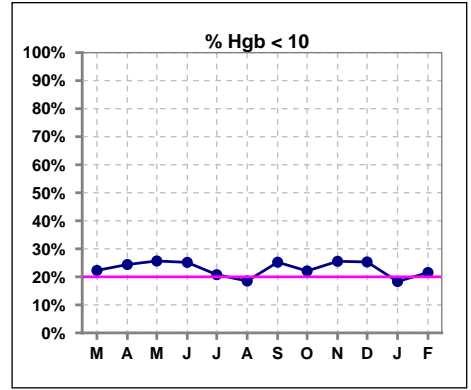
	Mar	Apr	May	Jun	Jul	Aug	Sep	Oct	Nov	Dec	Jan	Feb
# PTH-I		330			327			320			320	
# PTH-I 150 to 600		204			178			181			179	
Pop. Mean		444			540			531			483	
Std. Deviation		356			478			463			417	
% PTH-I 150 to 600		62%			54%			57%			56%	



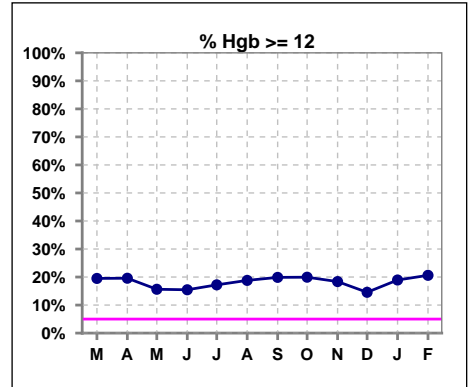
Methodology: a) KtV, CRCL and nPNa values are 4 month rolling mean of last value for each month, all other report lab results are based on last value of month; b) BP's are average of all values for month.

IV. ANEMIA

	Mar	Apr	May	Jun	Jul	Aug	Sep	Oct	Nov	Dec	Jan	Feb
# Hgb	323	332	339	330	337	335	337	326	321	316	322	325
# Hgb < 10	72	81	87	83	70	62	85	72	82	80	59	70
Pop. Mean	10.9	10.9	10.8	10.8	10.8	11.0	10.9	10.9	10.8	10.8	10.9	10.9
Std. Deviation	1.4	1.4	1.4	1.3	1.4	1.3	1.5	1.5	1.4	1.4	1.4	1.5
% Hgb < 10	22%	24%	26%	25%	21%	19%	25%	22%	26%	25%	18%	22%



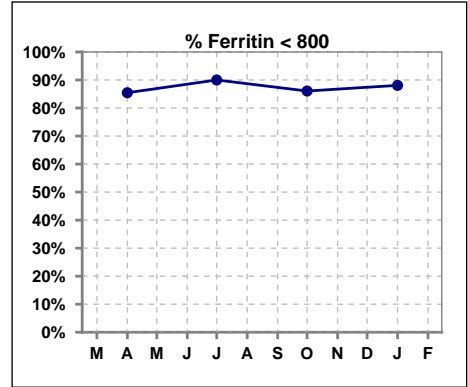
	Mar	Apr	May	Jun	Jul	Aug	Sep	Oct	Nov	Dec	Jan	Feb
# Hgb	323	332	339	330	337	335	337	326	321	316	322	325
# Hgb >= 12	63	65	53	51	58	63	67	65	59	46	61	67
Pop. Mean	10.9	10.9	10.8	10.8	10.8	11.0	10.9	10.9	10.8	10.8	10.9	10.9
Std. Deviation	1.4	1.4	1.4	1.3	1.4	1.3	1.5	1.5	1.4	1.4	1.4	1.5
% Hgb >= 12	20%	20%	16%	15%	17%	19%	20%	20%	18%	15%	19%	21%



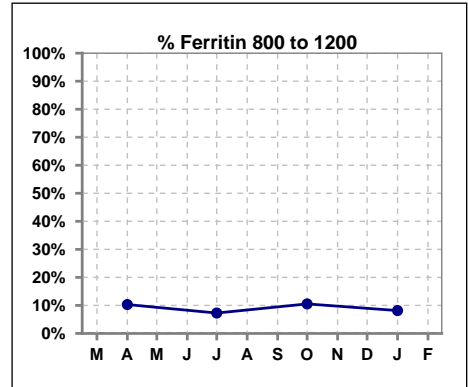
IV. ANEMIA - CONT.

Iron Profile

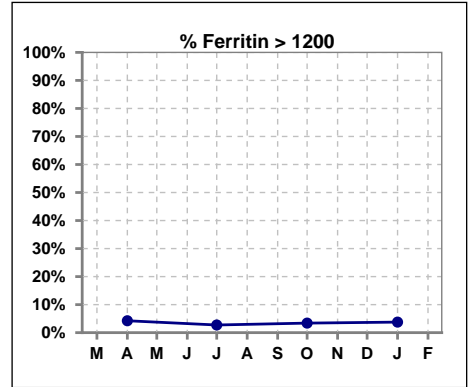
	Mar	Apr	May	Jun	Jul	Aug	Sep	Oct	Nov	Dec	Jan	Feb
# Ferritin		330			330			323			319	
# Ferritin < 800		282			297			278			281	
Pop. Mean		441			405			452			422	
Std. Deviation		379			345			406			386	
% Ferritin < 800		85%			90%			86%			88%	



	Mar	Apr	May	Jun	Jul	Aug	Sep	Oct	Nov	Dec	Jan	Feb
# Ferritin		330			330			323			319	
# Ferritin 800 to 1200		34			24			34			26	
Pop. Mean		441			405			452			422	
Std. Deviation		379			345			406			386	
% Ferritin 800 to 1200		10%			7%			11%			8%	

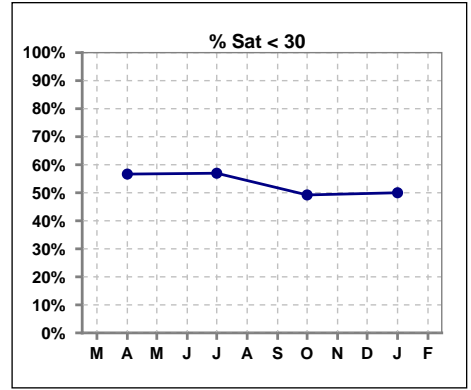


	Mar	Apr	May	Jun	Jul	Aug	Sep	Oct	Nov	Dec	Jan	Feb
# Ferritin		330			330			323			319	
# Ferritin > 1200		14			9			11			12	
Pop. Mean		441			405			452			422	
Std. Deviation		379			345			406			386	
% Ferritin > 1200		4%			3%			3%			4%	

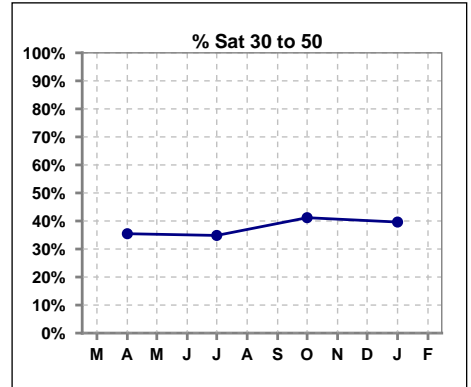


IV. ANEMIA - CONT.

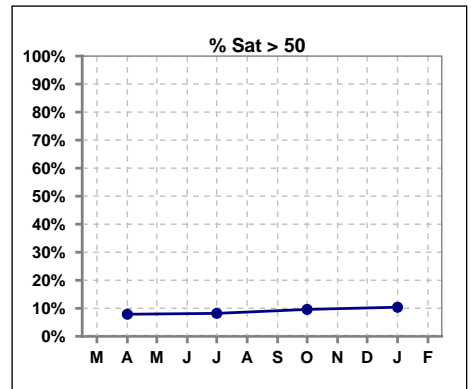
	Mar	Apr	May	Jun	Jul	Aug	Sep	Oct	Nov	Dec	Jan	Feb
# % Sat		330			330			323			318	
# % Sat < 30		187			188			159			159	
Pop. Mean		30			30			32			32	
Std. Deviation		14			15			15			16	
% % Sat < 30		57%			57%			49%			50%	



	Mar	Apr	May	Jun	Jul	Aug	Sep	Oct	Nov	Dec	Jan	Feb
# % Sat		330			330			323			318	
# % Sat 30 to 50		117			115			133			126	
Pop. Mean		30			30			32			32	
Std. Deviation		14			15			15			16	
% Sat% 30 to 50		35%			35%			41%			40%	

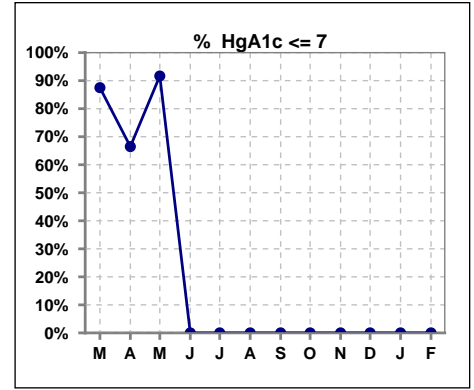


	Mar	Apr	May	Jun	Jul	Aug	Sep	Oct	Nov	Dec	Jan	Feb
# % Sat		330			330			323			318	
# % Sat > 50		26			27			31			33	
Pop. Mean		30			30			32			32	
Std. Deviation		14			15			15			16	
% Sat% > 50		8%			8%			10%			10%	



V. Diabetes

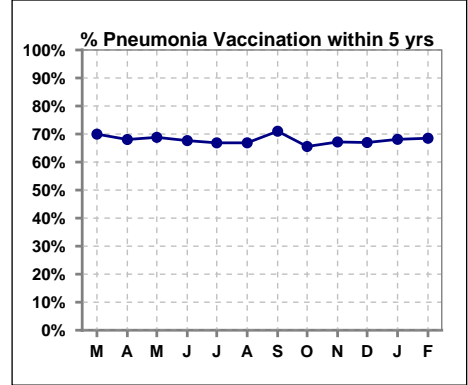
	Mar	Apr	May	Jun	Jul	Aug	Sep	Oct	Nov	Dec	Jan	Feb
# HgA1c	8	170	12	0	0	0	0	0	0	0	0	0
# HgA1c <= 7	7	113	11	0	0	0	0	0	0	0	0	0
Pop. Mean	5.9	6.5	6.2	0	0	0	0	0	0	0	0	0
Std. Deviation	1.02	1.33	0.83	0	0	0	0	0	0	0	0	0
% HgA1c <= 7	88%	66%	92%	0%	0%	0%	0%	0%	0%	0%	0%	0%



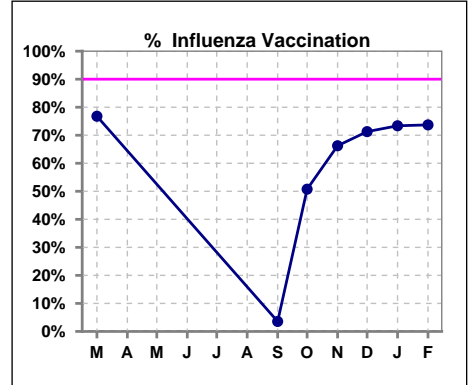
VI. Infection Control

Pneumonia vaccination within the past five years

	Mar	Apr	May	Jun	Jul	Aug	Sep	Oct	Nov	Dec	Jan	Feb
# Patient	323	335	340	337	341	338	338	331	326	324	323	327
# Pneumonia	226	228	234	228	228	226	240	217	219	217	220	224
% Pneumonia	70%	68%	69%	68%	67%	67%	71%	66%	67%	67%	68%	69%



	Mar	Apr	May	Jun	Jul	Aug	Sep	Oct	Nov	Dec	Jan	Feb
# Patient	323						338	331	326	324	323	327
# Influenza	248						12	168	216	231	237	241
% Influenza	77%						4%	51%	66%	71%	73%	74%



Exit Site Infection Rate

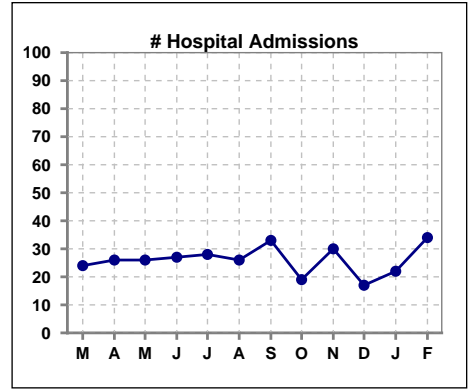
	Mar	Apr	May	Jun	Jul	Aug	Sep	Oct	Nov	Dec	Jan	Feb
Current Month	105.82	313.91	333.86	161.39	337.61	168.51	107.22	325.74	0	0	317.46	284.42
Rolling Year-to-date	0.09	0.08	0.07	0.08	0.08	0.07	0.08	0.06	0.06	0.06	0.06	0.06

Peritonitis Infection Rate

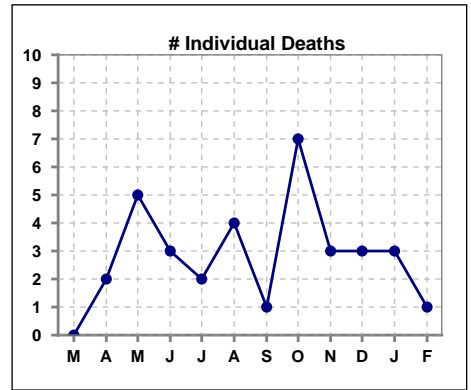
	Mar	Apr	May	Jun	Jul	Aug	Sep	Oct	Nov	Dec	Jan	Feb
Current Month	79.36	104.64	66.77	53.80	112.54	56.17	53.61	40.72	77.82	64.17	105.82	142.21
Rolling Year-to-date	0.26	0.23	0.22	0.22	0.23	0.21	0.21	0.20	0.20	0.21	0.20	0.19

VIII. Outcome measures

	Mar	Apr	May	Jun	Jul	Aug	Sep	Oct	Nov	Dec	Jan	Feb
# Patient	323	335	340	337	341	338	338	331	326	324	323	327
# Hospital Admissions	24	26	26	27	28	26	33	19	30	17	22	34



	Mar	Apr	May	Jun	Jul	Aug	Sep	Oct	Nov	Dec	Jan	Feb
# Patient	323	335	340	337	341	338	338	331	326	324	323	327
# Individual Deaths	0	2	5	3	2	4	1	7	3	3	3	1



	Mar	Apr	May	Jun	Jul	Aug	Sep	Oct	Nov	Dec	Jan	Feb
# Patient	323	335	340	337	341	338	338	331	326	324	323	327
# Transplants	2	3	3	2	3	2	2	3	0	3	3	2

