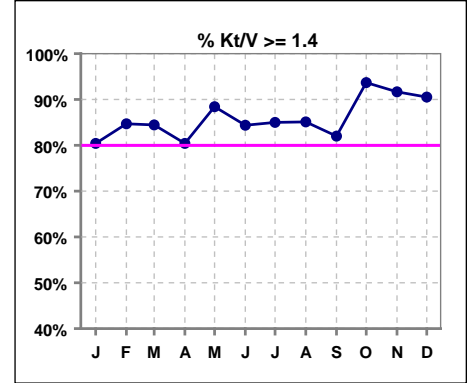


I. ADEQUACY OF DIALYSIS

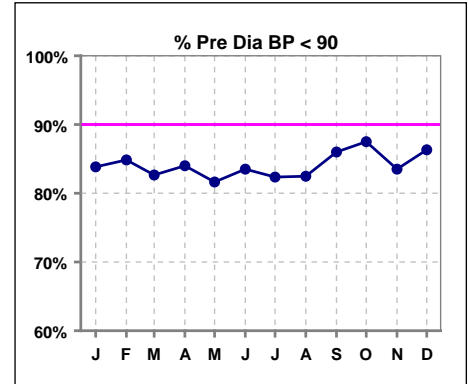
	Jan	Feb	Mar	Apr	May	Jun	Jul	Aug	Sep	Oct	Nov	Dec
# Kt/V	97	98	90	97	95	96	100	94	100	95	96	95
# Kt/V >= 1.4	78	83	76	78	84	81	85	80	82	89	88	86
Pop. Mean =	1.75	1.82	1.81	1.65	1.74	1.63	1.73	1.72	1.71	1.82	1.74	1.81
Std. Deviation =	0.60	0.49	0.82	0.33	0.46	0.35	0.39	0.31	0.41	0.45	0.33	0.47
Network Mean =	1.59	1.59	1.59	1.59	1.59	1.59	1.59	1.59	1.59	1.59	1.59	1.59
Natl. Mean =												
% Kt/V >= 1.4	80%	85%	84%	80%	88%	84%	85%	85%	82%	94%	92%	91%
**% Kt/V >= 1.2	93%	96%	96%	91%	99%	94%	96%	95%	92%	98%	96%	99%

** As of Apr. '04

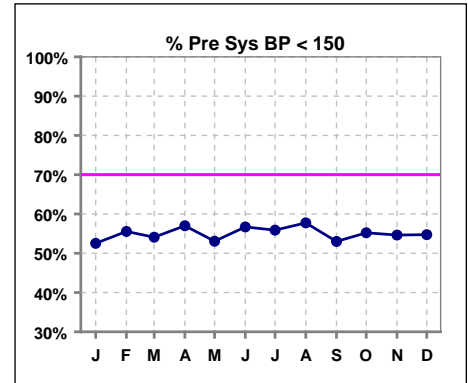


Blood Pressure Control (Pre)

	Jan	Feb	Mar	Apr	May	Jun	Jul	Aug	Sep	Oct	Nov	Dec
# Pre Dia BP	99	99	98	100	98	97	102	97	100	96	97	95
# Pre Dia BP < 90	83	84	81	84	80	81	84	80	86	84	81	82
Pop. Mean =	79	78	78	78	78	78	80	77	78	79	80	78
Std. Deviation =	14.6	12.4	14.4	14.6	13.5	13.7	20.0	13.6	12.7	16.4	16.9	11.8
Network Mean =												
Natl. Mean =												
% Pre Dia BP < 90	84%	85%	83%	84%	82%	84%	82%	82%	86%	88%	84%	86%



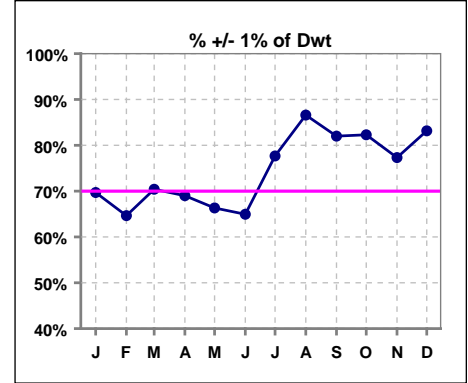
	Jan	Feb	Mar	Apr	May	Jun	Jul	Aug	Sep	Oct	Nov	Dec
# Pre Sys BP	99	99	98	100	98	97	102	97	100	96	97	95
# Pre Sys BP < 150	52	55	53	57	52	55	57	56	53	53	53	52
Pop. Mean =	148	148	146	147	147	147	147	145	146	147	148	148
Std. Deviation =	19.2	18.6	19.2	19.4	19.1	19.2	20.1	19.7	19.0	19.9	19.4	19.0
Network Mean =												
Natl. Mean =												
% Pre Sys BP < 150	53%	56%	54%	57%	53%	57%	56%	58%	53%	55%	55%	55%



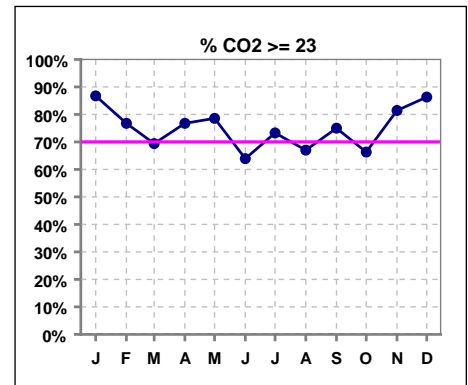
*Methodology: a) Monthly values based on patient's monthly average of all values present for the month; b) Quarter values are average of all values for quarter; c) Values not averaged use last value present at months end.

I. ADEQUACY OF DIALYSIS - CONT.

	Jan	Feb	Mar	Apr	May	Jun	Jul	Aug	Sep	Oct	Nov	Dec
# Post/Dwt	99	99	98	100	98	97	103	97	100	96	97	95
# +/- 1% of Dwt	69	64	69	69	65	63	80	84	82	79	75	79
% +/- 1 % of Dwt	70%	65%	70%	69%	66%	65%	78%	87%	82%	82%	77%	83%



	Jan	Feb	Mar	Apr	May	Jun	Jul	Aug	Sep	Oct	Nov	Dec
# CO2	98	99	98	99	98	97	101	97	100	95	97	95
# CO2 >= 23	85	76	68	76	77	62	74	65	75	63	79	82
Pop. Mean =	25	25	24	25	24	24	24	24	24	24	25	25
Std. Deviation =	3.90	3.55	3.04	4.07	2.95	3.13	3.25	3.82	3.20	2.80	2.86	3.10
Network Mean =												
Natl. Mean =												
% CO2 >= 23	87%	77%	69%	77%	79%	64%	73%	67%	75%	66%	81%	86%



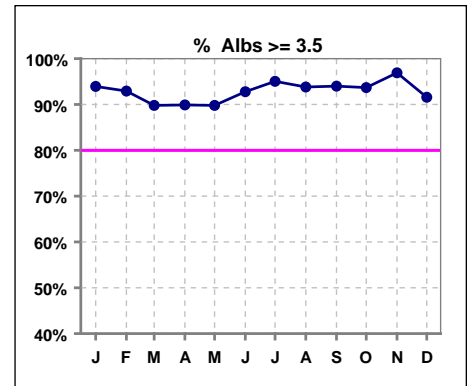
*Methodology: a) Monthly values based on patient's monthly average of all values present for the month; b) Quarter values are average of all values for quarter; c) Values not averaged use last value present at months end.

*Albumin values use BCG method - as of July 2001

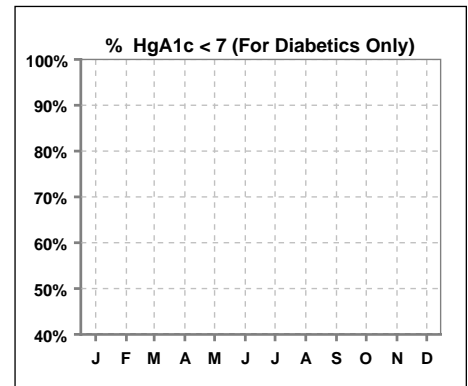
II. NUTRITION

	Jan	Feb	Mar	Apr	May	Jun	Jul	Aug	Sep	Oct	Nov	Dec
# Albumin	99	99	98	99	98	97	101	97	100	95	97	95
# Albumin >= 3.5	93	92	88	89	88	90	96	91	94	89	94	87
Pop. Mean =	3.9	4.0	3.9	3.9	3.9	3.9	4.0	4.0	4.1	4.1	4.1	4.0
Std. Deviation =	0.29	0.32	0.28	0.33	0.31	0.29	0.32	0.36	0.34	0.34	0.30	0.37
Network Mean =	3.4	3.4	3.4	3.4	3.4	3.4	3.4	3.4	3.4	3.4	3.4	3.4
Natl. Mean =	3.8	3.8	3.8	3.8	3.8	3.8	3.8	3.8	3.8	3.8	3.8	3.8
% Alb >= 3.5	94%	93%	90%	90%	90%	93%	95%	94%	94%	94%	97%	92%
% Alb >= 4.0	53%	61%	51%	45%	47%	44%	63%	65%	74%	66%	68%	73%
*Natl % >= 3.5-BCG	81%	81%	81%	81%	81%	81%	81%	81%	81%	81%	81%	81%
*Natl. % >= 4.0-BCG	39%	39%	39%	39%	39%	39%	39%	39%	39%	39%	39%	39%

*Figures for 2004



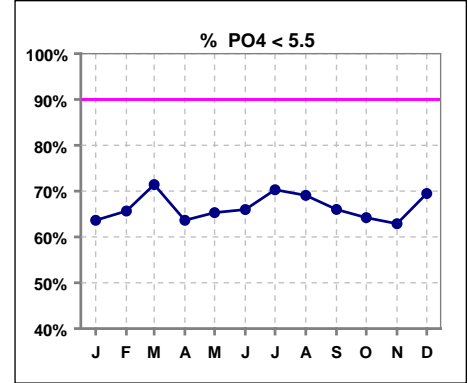
	Jan	Feb	Mar	Apr	May	Jun	Jul	Aug	Sep	Oct	Nov	Dec
# HgA1c							13					1
# HgA1c < 7							5					
Pop. Mean =							7.7					7.7
Std. Deviation =							1.91					
Network Mean =												
Natl. Mean =												
% HgA1c < 7							38%					



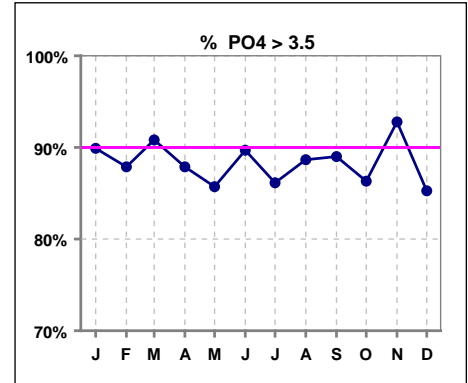
*Methodology: a) Monthly values based on patient's monthly average of all values present for the month; b) Quarter values are average of all values for quarter; c) Values not averaged use last value present at months end.

III. OSTEODYSTROPHY

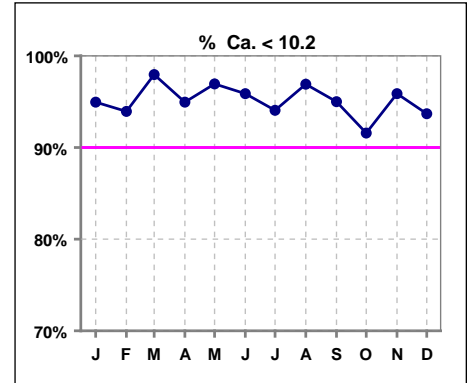
	Jan	Feb	Mar	Apr	May	Jun	Jul	Aug	Sep	Oct	Nov	Dec
# PO4	99	99	98	99	98	97	101	97	100	95	97	95
# PO4 < 5.5	63	65	70	63	64	64	71	67	66	61	61	66
Pop. Mean =	5.1	5.1	5.0	5.2	5.1	5.0	4.9	4.9	5.1	5.0	5.2	5.0
Std. Deviation =	1.40	1.47	1.23	1.52	1.56	1.33	1.44	1.39	1.37	1.36	1.43	1.36
Network Mean =												
Natl. Mean =												
% PO4 < 5.5	64%	66%	71%	64%	65%	66%	70%	69%	66%	64%	63%	69%



	Jan	Feb	Mar	Apr	May	Jun	Jul	Aug	Sep	Oct	Nov	Dec
# PO4	99	99	98	99	98	97	101	97	100	95	97	95
# PO4 > 3.5	89	87	89	87	84	87	87	86	89	82	90	81
Pop. Mean =	5.1	5.1	5.0	5.2	5.1	5.0	4.9	4.9	5.1	5.0	5.2	5.0
Std. Deviation =	1.40	1.47	1.23	1.52	1.56	1.33	1.44	1.39	1.37	1.36	1.43	1.36
Network Mean =												
Natl. Mean =												
% PO4 > 3.5	90%	88%	91%	88%	86%	90%	86%	89%	89%	86%	93%	85%



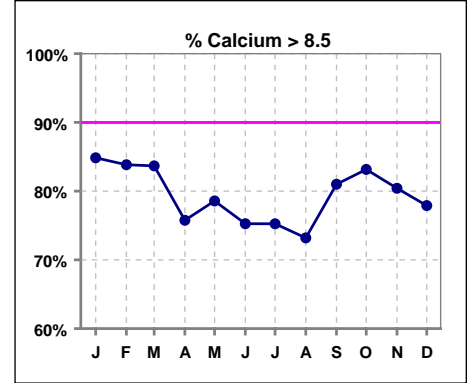
	Jan	Feb	Mar	Apr	May	Jun	Jul	Aug	Sep	Oct	Nov	Dec
# Calcium	99	99	98	99	98	97	101	97	100	95	97	95
# Calcium < 10.2	94	93	96	94	95	93	95	94	95	87	93	89
Pop. Mean =	9.2	9.2	9.1	9.0	9.2	9.1	8.9	9.1	9.1	9.1	9.0	9.0
Std. Deviation =	0.76	0.79	0.69	0.84	0.66	0.73	0.72	0.74	0.74	0.68	0.77	0.79
Network Mean =												
Natl. Mean =												
% Ca < 10.2	95%	94%	98%	95%	97%	96%	94%	97%	95%	92%	96%	94%



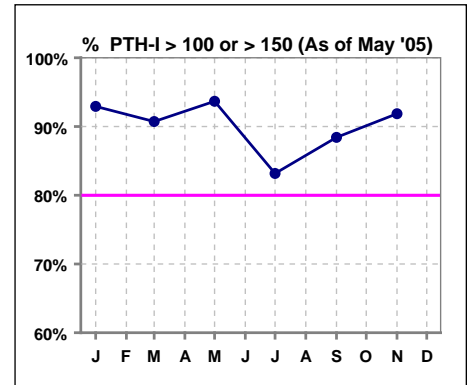
*Methodology: a) Monthly values based on patient's monthly average of all values present for the month; b) Quarter values are average of all values for quarter; c) Values not averaged use last value present at months end.

III. OSTEODYSTROPHY - CONT.

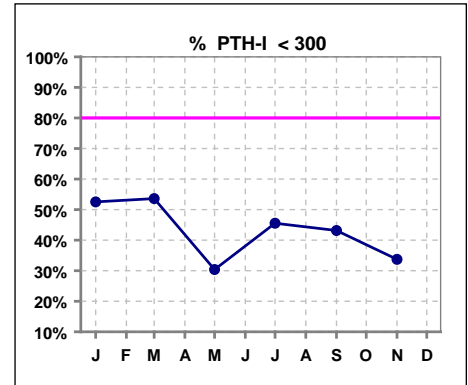
	Jan	Feb	Mar	Apr	May	Jun	Jul	Aug	Sep	Oct	Nov	Dec
# Calcium	99	99	98	99	98	97	101	97	100	95	97	95
# Calcium > 8.5	84	83	82	75	77	73	76	71	81	79	78	74
Pop. Mean =	9.2	9.2	9.1	9.0	9.2	9.1	8.9	9.1	9.1	9.1	9.0	9.0
Std. Deviation =	0.76	0.79	0.69	0.84	0.66	0.73	0.72	0.74	0.74	0.68	0.77	0.79
Network Mean =												
Natl. Mean =												
% Calcium > 8.5	85%	84%	84%	76%	79%	75%	75%	73%	81%	83%	80%	78%



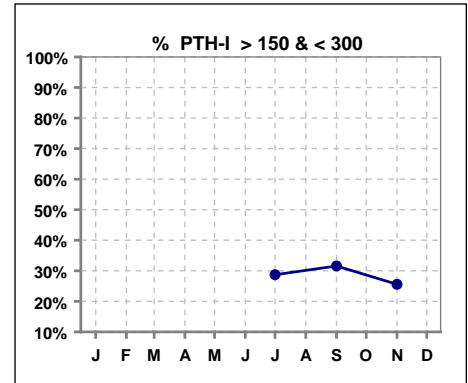
	Jan	Feb	Mar	Apr	May	Jun	Jul	Aug	Sep	Oct	Nov	Dec
# PTH-I	99		97		79		101		95		86	
# PTH-I > 100	92		88									
# PTH-I > 150					74		84		84		79	
Pop. Mean =	412		365		381		466		479		536	
Std. Deviation =	388		319		367		497		434		422	
Network Mean =												
Natl. Mean =												
% PTH-I > 100 or > 150 (As of May '05)	93%		91%		94%		83%		88%		92%	



	Jan	Feb	Mar	Apr	May	Jun	Jul	Aug	Sep	Oct	Nov	Dec
# PTH-I	99		97		79		101		95		86	
# PTH-I < 300	52		52		24		46		41		29	
Pop. Mean =	412		365		381		466		479		536	
Std. Deviation =	388		319		367		497		434		422	
Network Mean =												
Natl. Mean =												
% PTH-I < 300	53%		54%		30%		46%		43%		34%	



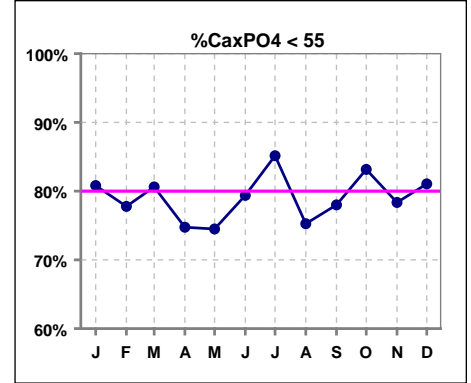
	Jan	Feb	Mar	Apr	May	Jun	Jul	Aug	Sep	Oct	Nov	Dec
# PTH-I							101		95		86	
# PTH-I > 150 & < 300							29		30		22	
Pop. Mean =							466		479		536	
Std. Deviation =							497		434		422	
Network Mean =												
Natl. Mean =												
% PTH-I > 100 & < 300							29%		32%		26%	



*Methodology: a) Monthly values based on patient's monthly average of all values present for the month; b) Quarter values are average of all values for quarter; c) Values not averaged use last value present at months end.

III. OSTEODYSTROPHY - CONT.

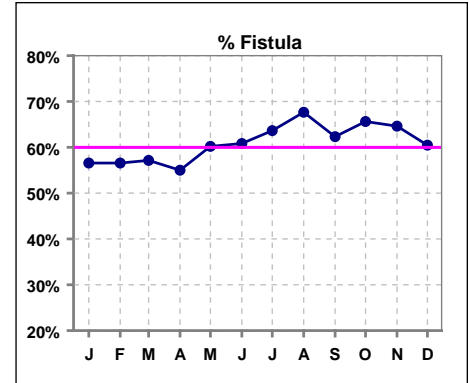
	Jan	Feb	Mar	Apr	May	Jun	Jul	Aug	Sep	Oct	Nov	Dec
# Ca x PO4	99	99	98	99	98	97	101	97	100	95	97	95
# Ca x PO4 < 55	80	77	79	74	73	77	86	73	78	79	76	77
Pop. Mean =	46.9	47.2	45.4	46.8	46.6	45.0	43.8	45.9	46.6	45.2	46.6	44.8
Std. Deviation =	12.1	13.0	11.0	13.9	13.7	11.9	12.5	13.4	12.7	11.8	12.2	12.2
Network Mean =												
Natl. Mean =												
% CaxPO4 < 55	81%	78%	81%	75%	74%	79%	85%	75%	78%	83%	78%	81%



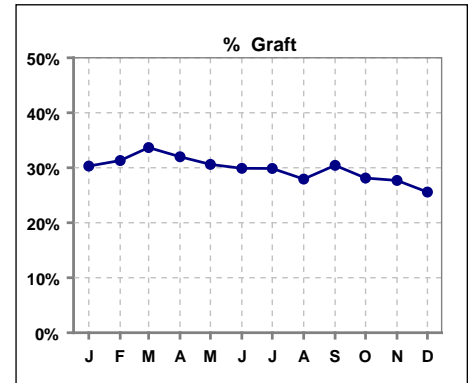
*Methodology: a) Monthly values based on patient's monthly average of all values present for the month; b) Quarter values are average of all values for quarter; c) Values not averaged use last value present at months end.

IV. ACCESS

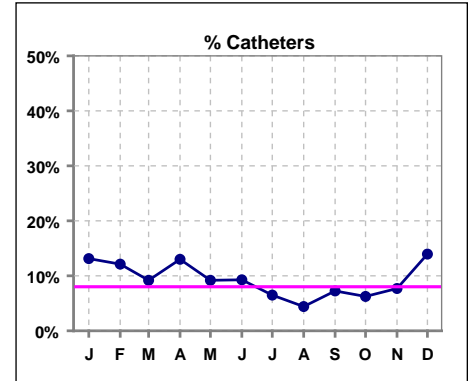
	Jan	Feb	Mar	Apr	May	Jun	Jul	Aug	Sep	Oct	Nov	Dec
# Access	99	99	98	100	98	97	77	68	69	64	65	43
# Fistula	56	56	56	55	59	59	49	46	43	42	42	26
Network % - 2004	55%	55%	55%	55%	55%	55%	55%	55%	55%	55%	55%	55%
Natl. % - 2004	35%	35%	35%	35%	35%	35%	35%	35%	35%	35%	35%	35%
% Fistula	57%	57%	57%	55%	60%	61%	64%	68%	62%	66%	65%	60%



	Jan	Feb	Mar	Apr	May	Jun	Jul	Aug	Sep	Oct	Nov	Dec
# Access	99	99	98	100	98	97	77	68	69	64	65	43
# Graft	30	31	33	32	30	29	23	19	21	18	18	11
Network %												
Natl. %												
% Graft	30%	31%	34%	32%	31%	30%	30%	28%	30%	28%	28%	26%



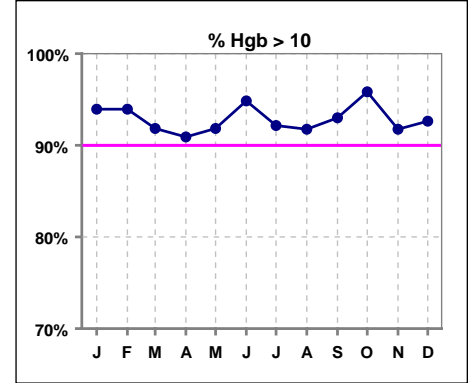
	Jan	Feb	Mar	Apr	May	Jun	Jul	Aug	Sep	Oct	Nov	Dec
# Access	99	99	98	100	98	97	77	68	69	64	65	43
# Catheters	13	12	9	13	9	9	5	3	5	4	5	6
Network %												
Natl. % - 2004	27%	27%	27%	27%	27%	27%	27%	27%	27%	27%	27%	27%
% Catheters	13%	12%	9%	13%	9%	9%	6%	4%	7%	6%	8%	14%



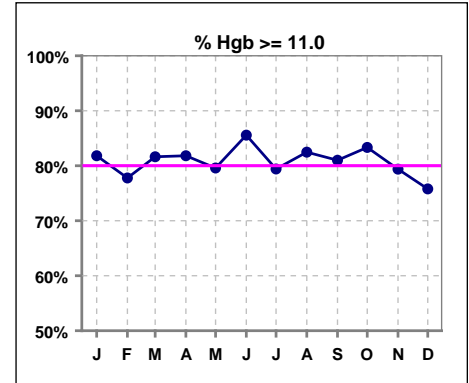
*Methodology: a) Monthly values based on patient's monthly average of all values present for the month; b) Quarter values are average of all values for quarter; c) Values not averaged use last value present at months end.

V. ANEMIA

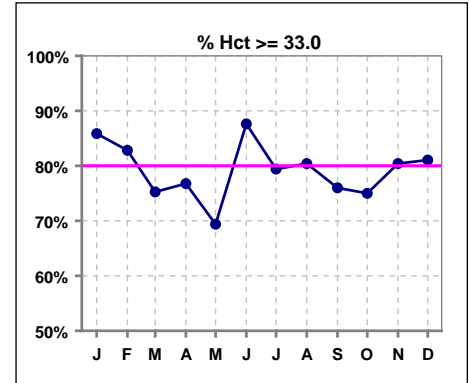
	Jan	Feb	Mar	Apr	May	Jun	Jul	Aug	Sep	Oct	Nov	Dec
# Hgb	99	99	98	99	98	97	102	97	100	96	97	95
# Hgb > 10.0	93	93	90	90	90	92	94	89	93	92	89	88
Pop. Mean =	12.1	11.9	11.8	11.8	12.0	12.1	11.8	11.9	12.0	11.8	11.9	11.6
Std. Deviation =	1.4	1.3	1.4	1.4	1.5	1.3	1.3	1.2	1.3	1.3	1.2	1.3
Network Mean =	11.8	11.8	11.8	11.8	11.8	11.8	11.8	11.8	11.8	11.8	11.8	11.8
Natl. Mean =												
% Hgb > 10.0	94%	94%	92%	91%	92%	95%	92%	92%	93%	96%	92%	93%



	Jan	Feb	Mar	Apr	May	Jun	Jul	Aug	Sep	Oct	Nov	Dec
# Hgb	99	99	98	99	98	97	102	97	100	96	97	95
# Hgb >= 11.0	81	77	80	81	78	83	81	80	81	80	77	72
Pop. Mean =	12.1	11.9	11.8	11.8	12.0	12.1	11.8	11.9	12.0	11.8	11.9	11.6
Std. Deviation =	1.4	1.3	1.4	1.4	1.5	1.3	1.3	1.2	1.3	1.3	1.2	1.3
Network Mean =	11.8	11.8	11.8	11.8	11.8	11.8	11.8	11.8	11.8	11.8	11.8	11.8
Natl. Mean =												
% Hgb >= 11.0	82%	78%	82%	82%	80%	86%	79%	82%	81%	83%	79%	76%
% Natl. >= 11 2004	80%	80%	80%	80%	80%	80%	80%	80%	80%	80%	80%	80%



	Jan	Feb	Mar	Apr	May	Jun	Jul	Aug	Sep	Oct	Nov	Dec
# Hct	99	99	97	99	98	97	102	97	100	96	97	95
# Hct >= 33.0	85	82	73	76	68	85	81	78	76	72	78	77
Pop. Mean =	37	36	35	35	35	37	35	36	36	36	36	36
Std. Deviation =	4.25	3.86	3.95	4.15	4.51	4.04	4.02	3.85	4.18	4.07	3.92	4.19
Network Mean =												
Natl. Mean =												
% Hct >= 33.0	86%	83%	75%	77%	69%	88%	79%	80%	76%	75%	80%	81%

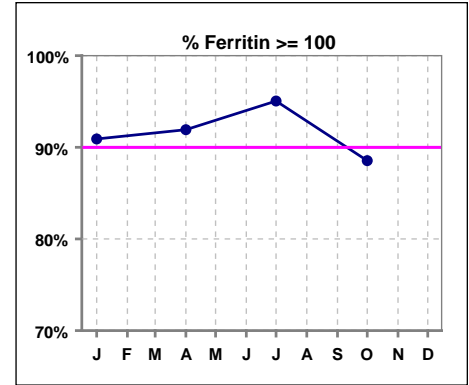


*Methodology: a) Monthly values based on patient's monthly average of all values present for the month; b) Quarter values are average of all values for quarter; c) Values not averaged use last value present at months end.

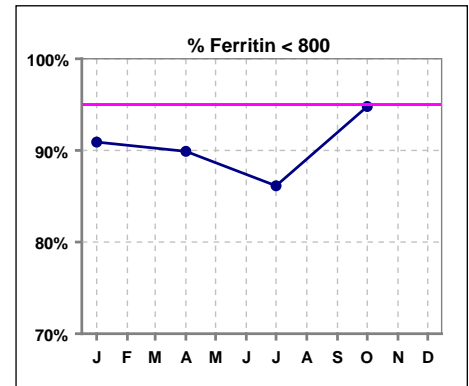
V. ANEMIA - CONT.

Iron Profile

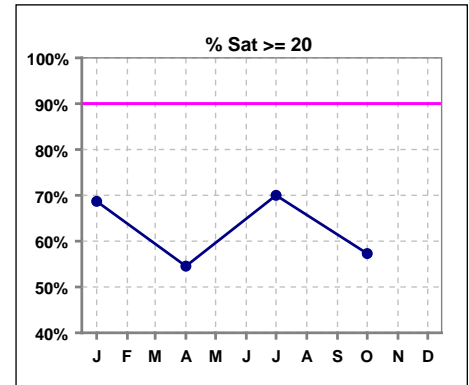
	Jan	Feb	Mar	Apr	May	Jun	Jul	Aug	Sep	Oct	Nov	Dec
# Ferritin	99			99			101			96		
# Ferritin >= 100	90			91			96			85		
Pop. Mean =	445			483			526			432		
Std. Deviation =	415			489			572			535		
Network Mean =												
Natl. Mean =												
% Ferritin >= 100	91%			92%			95%			89%		
%Natl. >=100 2004	94%			94%			94%			94%		



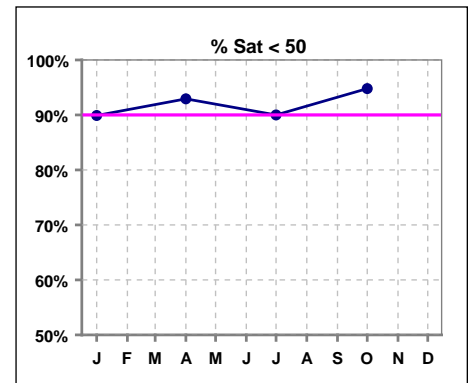
	Jan	Feb	Mar	Apr	May	Jun	Jul	Aug	Sep	Oct	Nov	Dec
# Ferritin	99			99			101			96		
# Ferritin < 800	90			89			87			91		
Pop. Mean =	445			483			526			432		
Std. Deviation =	415			489			572			535		
Network Mean =												
Natl. Mean =												
% Ferritin < 800	91%			90%			86%			95%		



	Jan	Feb	Mar	Apr	May	Jun	Jul	Aug	Sep	Oct	Nov	Dec
# % Sat	99			99			100			96		
# % Sat >= 20	68			54			70			55		
Pop. Mean =	28			23			29			24		
Std. Deviation =	16			15			15			15		
Network Mean =												
Natl. Mean =												
% Sat% >= 20	69%			55%			70%			57%		
%Natl. >=20 2004	81%			81%			81%			81%		



	Jan	Feb	Mar	Apr	May	Jun	Jul	Aug	Sep	Oct	Nov	Dec
# % Sat	99			99			100			96		
# % Sat < 50	89			92			90			91		
Pop. Mean =	28			23			29			24		
Std. Deviation =	16			15			15			15		
Network Mean =												
Natl. Mean =												
% Sat% < 50	90%			93%			90%			95%		



*Methodology: a) Monthly values based on patient's monthly average of all values present for the month; b) Quarter values are average of all values for quarter; c) Values not averaged use last value present at months end.