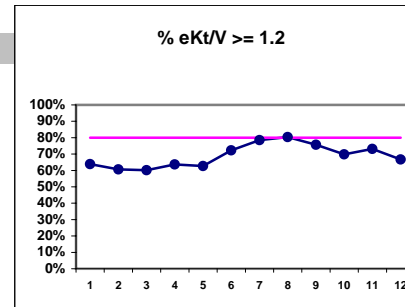


**SCU - Haviland Kidney Center - Center Hemodialysis**  
 Quality Assurance Reports (Excludes patients in first 6 months of treatment)  
 Through period ending Dec. 31, 1999

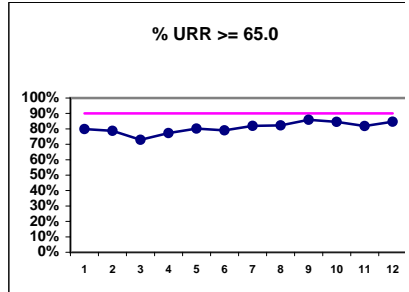
I.j - I.S. Dept.

**I. ADEQUACY OF DIALYSIS**

	J	F	M	A	M	J	J	A	S	O	N	D
# eKt/V	119	122	118	110	110	108	107	107	111	106	108	102
# eKt/V >= 1.2	76	74	71	70	69	78	84	86	84	74	79	68
Pop. Mean =	1.30	1.30	1.26	1.28	1.36	1.33	1.39	1.38	1.38	1.36	1.35	1.44
Std. Deviation =	0.26	0.42	0.28	0.35	0.63	0.41	0.35	0.26	0.27	0.37	0.28	0.71
Network Mean =												
Natl. Mean =												
% eKt/V >= 1.2	64%	61%	60%	64%	63%	72%	79%	80%	76%	70%	73%	67%

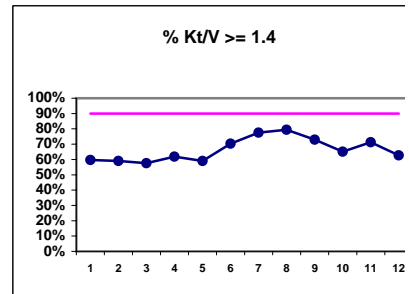


# URR	119	122	118	110	111	110	111	107	113	110	110	111
# URR >= 65.0	95	96	86	85	89	87	91	88	97	93	90	94
Pop. Mean =	70.5	70.4	70.0	70.6	71.5	70.8	71.0	70.7	72.8	72.5	72.4	72.3
Std. Deviation =	8.78	8.99	8.94	8.03	7.91	8.28	7.87	8.09	8.33	8.39	7.50	7.99
Network Mean =	74.0	74.0	74.0	74.0	74.0	74.0	74.0	74.0	74.0	74.0	74.0	74.0
*Natl. Mean =	68.0	68.0	68.0	68.0	68.0	68.0	68.0	68.0	68.0	68.0	68.0	68.0
% URR >= 65.0	80%	79%	73%	77%	80%	79%	82%	82%	86%	85%	82%	85%
*Natl. % > 65.0	72%	72%	72%	72%	72%	72%	72%	72%	72%	72%	72%	72%



\* Figures for 1997

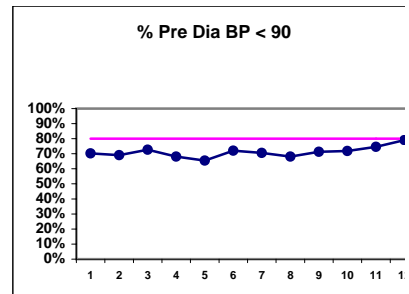
# Kt/V	119	122	118	110	110	108	107	107	111	106	108	102
# Kt/V >= 1.4	71	72	68	68	65	76	83	85	81	69	77	64
Pop. Mean =	1.50	1.51	1.46	1.50	1.59	1.53	1.61	1.60	1.55	1.57	1.55	1.67
Std. Deviation =	0.31	0.48	0.32	0.37	0.74	0.47	0.41	0.32	0.32	0.42	0.32	0.88
Network Mean =												
*Natl. Mean =	1.39	1.39	1.39	1.39	1.39	1.39	1.39	1.39	1.39	1.39	1.39	1.39
% Kt/V >= 1.4	60%	59%	58%	62%	59%	70%	78%	79%	73%	65%	71%	63%
% Kt/V > 1.2	82%	81%	80%	82%	87%	87%	90%	87%	85%	88%	87%	82%
*Network % > 1.2	79%	79%	79%	79%	79%	79%	79%	79%	79%	79%	79%	79%
*Natl. % > 1.2	78%	78%	78%	78%	78%	78%	78%	78%	78%	78%	78%	78%



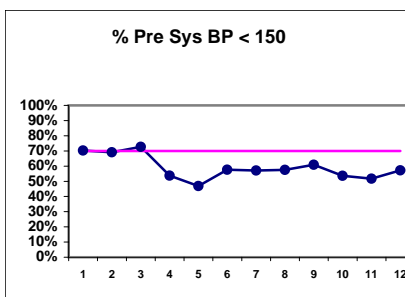
\* Figures for 1997

**Blood Pressure Control (Pre)**

# Pre Dia BP	121	123	121	119	113	111	112	113	115	110	118	124
# Pre Dia BP < 90	85	85	88	81	74	80	79	77	82	79	88	98
Pop. Mean =	83	83	82	82	83	81	82	82	82	82	81	79
Std. Deviation =	14.4	14.2	13.9	14.2	15.2	14.1	14.4	14.4	14.7	14.4	14.4	14.1
Network Mean =												
Natl. Mean =												
% Pre Dia BP < 90	70%	69%	73%	68%	65%	72%	71%	68%	71%	72%	75%	79%



# Pre Sys BP	121	123	121	119	113	111	112	113	115	110	118	124
# Pre Sys BP < 150	85	85	88	64	53	64	64	65	70	59	61	71
Pop. Mean =	150	149	148	148	151	147	148	148	149	149	148	146
Std. Deviation =	23.0	22.5	22.2	22.4	21.9	20.4	22.0	21.3	23.1	22.9	22.9	22.7
Network Mean =												
Natl. Mean =												
% Pre Sys BP < 150	70%	69%	73%	54%	47%	58%	57%	58%	61%	54%	52%	57%



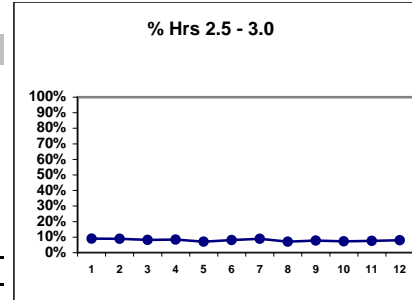
\*Methodology: a) Monthly values based on patient's monthly average of all values present for the month; b) Quarter values are average of all values for quarter; c) Values not averaged use last value present at months end.

**SCU - Haviland Kidney Center - Center Hemodialysis**  
 Quality Assurance Reports (Excludes patients in first 6 months of treatment)  
 Through period ending Dec. 31, 1999

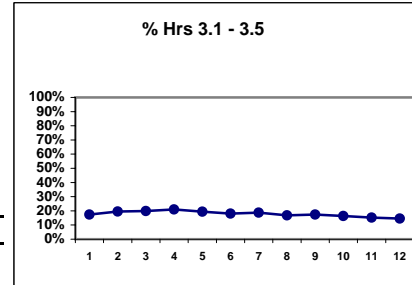
I.j - I.S. Dept.

**I. ADEQUACY OF DIALYSIS - CONT.**

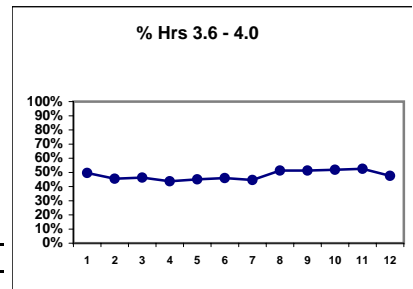
	J	F	M	A	M	J	J	A	S	O	N	D
# Dialysis Hrs	121	123	121	119	113	111	112	113	115	110	118	124
# Hrs. 2.5 - 3.0	11	11	10	10	8	9	10	8	9	8	9	10
Pop. Mean =	3.9	3.9	3.9	3.9	3.9	3.9	3.9	3.9	3.9	3.9	3.9	3.9
Std. Deviation =	0.49	0.48	0.45	0.45	0.47	0.47	0.48	0.48	0.50	0.46	0.49	0.49
Network Mean =												
Natl. Mean =												
% Hrs. 2.5 - 3.0	9%	9%	8%	8%	7%	8%	9%	7%	8%	7%	8%	8%



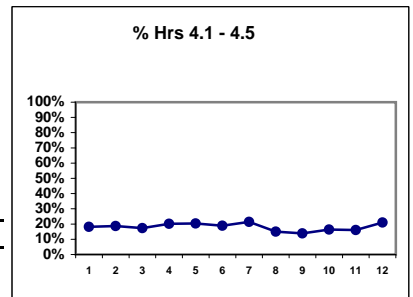
# Dialysis Hrs	121	123	121	119	113	111	112	113	115	110	118	124
# Hrs 3.1 - 3.5	21	24	24	25	22	20	21	19	20	18	18	18
Pop. Mean =	3.9	3.9	3.9	3.9	3.9	3.9	3.9	3.9	3.9	3.9	3.9	3.9
Std. Deviation =	0.49	0.48	0.45	0.45	0.47	0.47	0.48	0.48	0.50	0.46	0.49	0.49
Network Mean =												
Natl. Mean =												
% Hrs 3.1 - 3.5	17%	20%	20%	21%	19%	18%	19%	17%	17%	16%	15%	15%



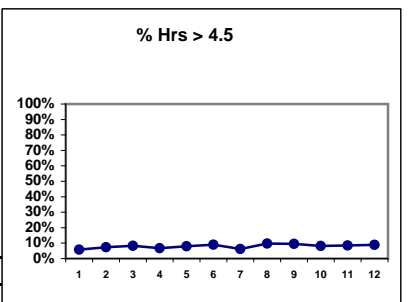
# Dialysis Hrs	121	123	121	119	113	111	112	113	115	110	118	124
# Hrs 3.6 - 4.0	60	56	56	52	51	51	50	58	59	57	62	59
Pop. Mean =	3.9	3.9	3.9	3.9	3.9	3.9	3.9	3.9	3.9	3.9	3.9	3.9
Std. Deviation =	0.49	0.48	0.45	0.45	0.47	0.47	0.48	0.48	0.50	0.46	0.49	0.49
Network Mean =												
Natl. Mean =												
% Hrs 3.6 - 4.0	50%	46%	46%	44%	45%	46%	45%	51%	51%	52%	53%	48%



# Dialysis Hrs	121	123	121	119	113	111	112	113	115	110	118	124
# Hrs 4.1 - 4.5	22	23	21	24	23	21	24	17	16	18	19	26
Pop. Mean =	3.9	3.9	3.9	3.9	3.9	3.9	3.9	3.9	3.9	3.9	3.9	3.9
Std. Deviation =	0.49	0.48	0.45	0.45	0.47	0.47	0.48	0.48	0.50	0.46	0.49	0.49
Network Mean =												
Natl. Mean =												
% Hrs 4.1 - 4.5	18%	19%	17%	20%	20%	19%	21%	15%	14%	16%	16%	21%



# Dialysis Hrs	121	123	121	119	113	111	112	113	115	110	118	124
# Hrs > 4.5	7	9	10	8	9	10	7	11	11	9	10	11
Pop. Mean =	3.9	3.9	3.9	3.9	3.9	3.9	3.9	3.9	3.9	3.9	3.9	3.9
Std. Deviation =	0.49	0.48	0.45	0.45	0.47	0.47	0.48	0.48	0.50	0.46	0.49	0.49
Network Mean =												
Natl. Mean =												
% Hrs > 4.5	6%	7%	8%	7%	8%	9%	6%	10%	10%	8%	8%	9%



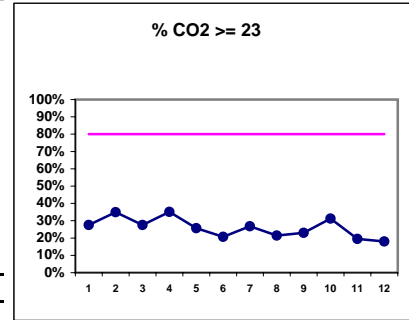
\*Methodology: a) Monthly values based on patient's monthly average of all values present for the month; b) Quarter values are average of all values for quarter; c) Values not averaged use last value present at months end.

**SCU - Haviland Kidney Center - Center Hemodialysis**  
 Quality Assurance Reports (Excludes patients in first 6 months of treatment)  
 Through period ending Dec. 31, 1999

I,j - I.S. Dept.

**I. ADEQUACY OF DIALYSIS - CONT.**

	J	F	M	A	M	J	J	A	S	O	N	D
# CO2	120	123	120	114	113	111	112	112	113	109	118	122
# CO2 >= 23	33	43	33	40	29	23	30	24	26	34	23	22
Pop. Mean =	21	22	21	21	21	21	21	20	20	21	20	19
Std. Deviation =	3.92	2.81	3.31	3.69	2.93	2.83	3.46	3.28	3.81	3.72	2.76	3.87
Network Mean =												
Natl. Mean =												
<b>% CO2 &gt;= 23</b>	<b>28%</b>	<b>35%</b>	<b>28%</b>	<b>35%</b>	<b>26%</b>	<b>21%</b>	<b>27%</b>	<b>21%</b>	<b>23%</b>	<b>31%</b>	<b>19%</b>	<b>18%</b>



(Note: Jan & Feb Albumin values are adjusted by +0.2)

\*Albumin values use BCP method)

\*Methodology: a) Monthly values based on patient's monthly average of all values present for the month; b) Quarter values are average of all values for quarter; c) Values not averaged use last value present at months end.

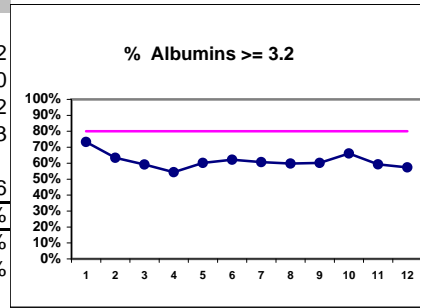
**SCU - Haviland Kidney Center - Center Hemodialysis**  
**Quality Assurance Reports (Excludes patients in first 6 months of treatment)**  
**Through period ending Dec. 31, 1999**

I,j - I.S. Dept.

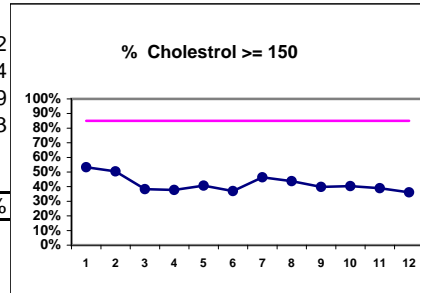
**II. NUTRITION**

	J	F	M	A	M	J	J	A	S	O	N	D
# Albumin	120	123	120	114	113	111	112	112	113	109	118	122
# Albumin >= 3.2	88	78	71	62	68	69	68	67	68	72	70	70
Pop. Mean =	3.3	3.3	3.2	3.1	3.2	3.3	3.2	3.2	3.2	3.3	3.2	3.2
Std. Deviation =	0.39	0.40	0.49	0.46	0.53	0.49	0.46	0.48	0.46	0.45	0.45	0.43
Network Mean =												
Natl. Mean =	3.6	3.6	3.6	3.6	3.6	3.6	3.6	3.6	3.6	3.6	3.6	3.6
% Albumin >= 3.2	73%	63%	59%	54%	60%	62%	61%	60%	60%	66%	59%	57%
*Network % >= 3.2	76%	76%	76%	76%	76%	76%	76%	76%	76%	76%	76%	76%
*Natl. % >= 3.2	83%	83%	83%	83%	83%	83%	83%	83%	83%	83%	83%	83%

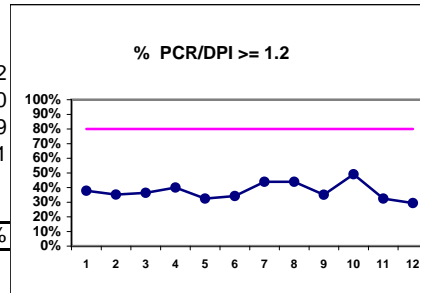
\*Figures for 1997



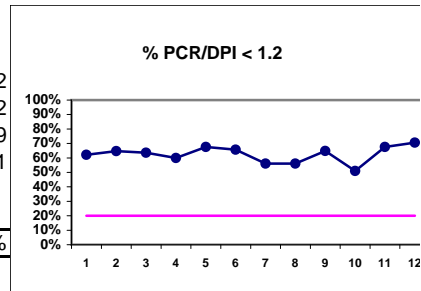
# Cholesterol	120	123	120	114	113	111	112	112	113	109	118	122
# Chol. >= 150	64	62	46	43	46	41	52	49	45	44	46	44
Pop. Mean =	153	152	142	143	145	140	145	142	141	144	144	139
Std. Deviation =	43.9	43.6	33.1	37.9	30.9	30.8	32.7	34.4	37.9	36.8	33.3	36.3
Network Mean =												
Natl. Mean =												
% Chol. >= 150	53%	50%	38%	38%	41%	37%	46%	44%	40%	40%	39%	36%



# PCR/DPI	119	122	118	110	111	108	107	107	111	106	108	102
# PCR/DPI >= 1.2	45	43	43	44	36	37	47	47	39	52	35	30
Pop. Mean =	1.08	1.01	1.07	1.07	1.07	1.06	1.11	1.09	1.06	1.13	1.06	1.09
Std. Deviation =	0.34	0.28	0.31	0.34	0.32	0.33	0.33	0.31	0.32	0.33	0.31	0.31
Network Mean =												
Natl. Mean =												
% PCR/DPI >= 1.2	38%	35%	36%	40%	32%	34%	44%	44%	35%	49%	32%	29%



# PCR/DPI	119	122	118	110	111	108	107	107	111	106	108	102
# PCR/DPI < 1.2	74	79	75	66	75	71	60	60	72	54	73	72
Pop. Mean =	1.08	1.01	1.07	1.07	1.07	1.06	1.11	1.09	1.06	1.13	1.06	1.09
Std. Deviation =	0.34	0.28	0.31	0.34	0.32	0.33	0.33	0.31	0.32	0.33	0.31	0.31
Network Mean =												
Natl. Mean =												
% PCR/DPI < 1.2	62%	65%	64%	60%	68%	66%	56%	56%	65%	51%	68%	71%



**III. OSTEODYSTROPHY**

% Calcium < 11.0

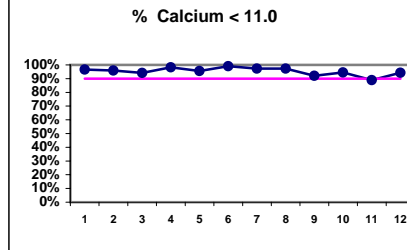
\*Methodology: a) Monthly values based on patient's monthly average of all values present for the month; b) Quarter values are average of all values for quarter; c) Values not averaged use last value present at months end.

**SCU - Haviland Kidney Center - Center Hemodialysis**  
**Quality Assurance Reports (Excludes patients in first 6 months of treatment)**

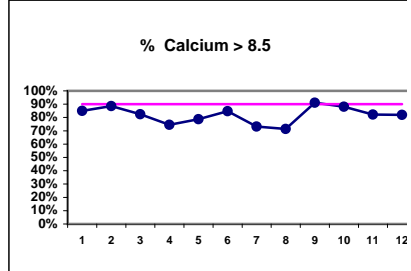
I.j - I.S. Dept.

Through period ending Dec. 31, 1999

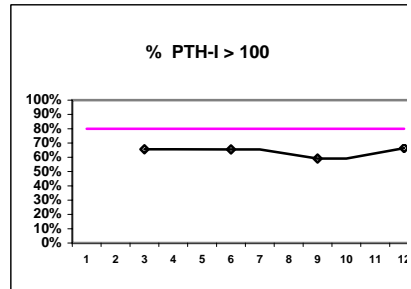
	J	F	M	A	M	J	J	A	S	O	N	D
# Calcium	120	123	120	114	113	111	112	112	113	109	118	122
# Calcium < 11.0	116	118	113	112	108	110	109	109	104	103	105	115
Pop. Mean =	9.3	9.5	9.3	9.1	9.4	9.3	9.1	9.0	9.6	9.6	9.5	9.4
Std. Deviation =	0.91	1.01	0.95	0.88	0.92	0.96	1.03	1.03	1.10	1.00	1.11	1.09
Network Mean =												
Natl. Mean =												
<b>% Calcium &lt; 11.0</b>	<b>97%</b>	<b>96%</b>	<b>94%</b>	<b>98%</b>	<b>96%</b>	<b>99%</b>	<b>97%</b>	<b>97%</b>	<b>92%</b>	<b>94%</b>	<b>89%</b>	<b>94%</b>



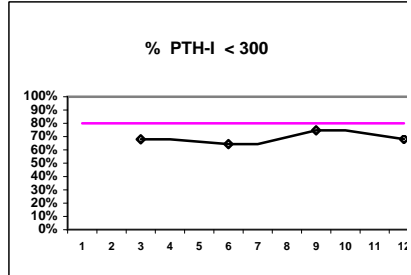
# Calcium	120	123	120	114	113	111	112	112	113	109	118	122
# Calcium > 8.5	102	109	99	85	89	94	82	80	103	96	97	100
Pop. Mean =	9.3	9.5	9.3	9.1	9.4	9.3	9.1	9.0	9.6	9.6	9.5	9.4
Std. Deviation =	0.91	1.01	0.95	0.88	0.92	0.96	1.03	1.03	1.10	1.00	1.11	1.09
Network Mean =												
Natl. Mean =												
<b>% Calcium &gt; 8.5</b>	<b>85%</b>	<b>89%</b>	<b>83%</b>	<b>75%</b>	<b>79%</b>	<b>85%</b>	<b>73%</b>	<b>71%</b>	<b>91%</b>	<b>88%</b>	<b>82%</b>	<b>82%</b>



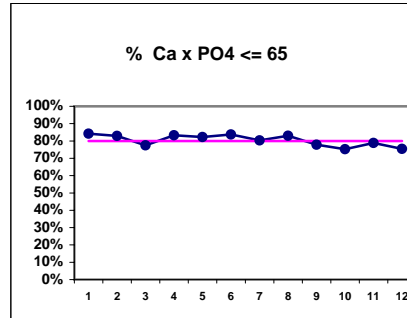
# PTH-I		128			87			115				119
# PTH-I > 100		84			57			68				79
Pop. Mean =		323			258			260				275
Std. Deviation =		446			399			439				356
Network Mean =												
Natl. Mean =												
<b>% PTH-I &gt; 100</b>		<b>66%</b>			<b>66%</b>			<b>59%</b>				<b>66%</b>



# PTH-I		128			87			115				119
# PTH-I < 300		87			56			86				81
Pop. Mean =		323			258			260				275
Std. Deviation =		446			399			439				356
Network Mean =												
Natl. Mean =												
<b>% PTH-I &lt; 300</b>		<b>68%</b>			<b>64%</b>			<b>75%</b>				<b>68%</b>

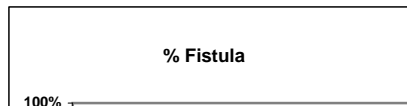


# Ca x PO4	120	123	120	114	113	111	112	112	113	109	118	122
# Ca x PO4 <= 65	101	102	93	95	93	93	90	93	88	82	93	92
Pop. Mean =	52.1	49.2	52.2	48.9	49.3	46.4	48.7	48.9	50.8	53.4	52.4	52.9
Std. Deviation =	18.4	17.7	16.5	18.7	16.6	17.6	18.5	17.4	19.4	19.1	18.4	18.4
Network Mean =												
Natl. Mean =												
<b>% Ca x PO4 &lt;= 65</b>	<b>84%</b>	<b>83%</b>	<b>78%</b>	<b>83%</b>	<b>82%</b>	<b>84%</b>	<b>80%</b>	<b>83%</b>	<b>78%</b>	<b>75%</b>	<b>79%</b>	<b>75%</b>



**IV. ACCESS**

J F M A M J J A S O N D



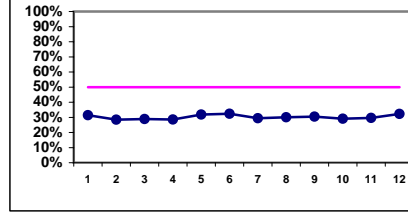
\*Methodology: a) Monthly values based on patient's monthly average of all values present for the month; b) Quarter values are average of all values for quarter; c) Values not averaged use last value present at months end.

**SCU - Haviland Kidney Center - Center Hemodialysis**  
**Quality Assurance Reports (Excludes patients in first 6 months of treatment)**

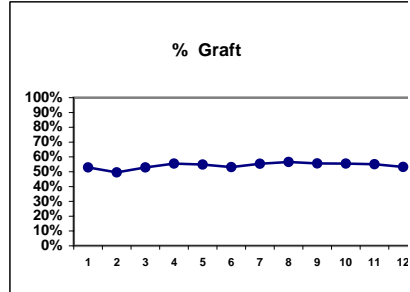
I,j - I.S. Dept.

Through period ending Dec. 31, 1999

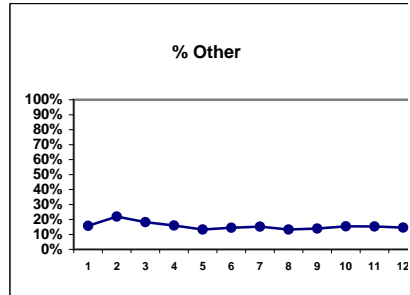
# Access	121	123	121	119	113	111	112	113	115	110	118	124
# Fistula	38	35	35	34	36	36	33	34	35	32	35	40
Network %												
Natl. %												
% Fistula	31%	28%	29%	29%	32%	32%	29%	30%	30%	29%	30%	32%



# Access	121	123	121	119	113	111	112	113	115	110	118	124
# Graft	64	61	64	66	62	59	62	64	64	61	65	66
Network %												
Natl. %												
% Graft	53%	50%	53%	55%	55%	53%	55%	57%	56%	55%	55%	53%

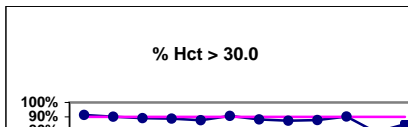


# Access	121	123	121	119	113	111	112	113	115	110	118	124
# Other	19	27	22	19	15	16	17	15	16	17	18	18
Network %												
Natl. %												
% Other	16%	22%	18%	16%	13%	14%	15%	13%	14%	15%	15%	15%



**V. ANEMIA**

	J	F	M	A	M	J	J	A	S	O	N	D
# Hct	116	121	119	116	113	107	110	110	114	102	112	119
# Hct > 30.0	106	109	106	103	99	97	97	96	100	92	89	101



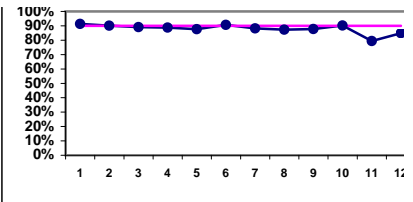
\*Methodology: a) Monthly values based on patient's monthly average of all values present for the month; b) Quarter values are average of all values for quarter; c) Values not averaged use last value present at months end.

**SCU - Haviland Kidney Center - Center Hemodialysis**  
**Quality Assurance Reports (Excludes patients in first 6 months of treatment)**

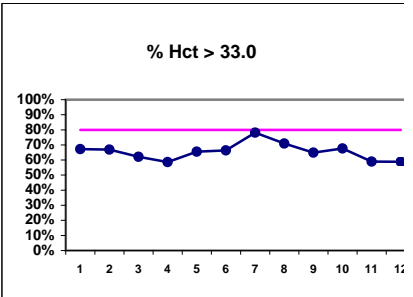
I.j - I.S. Dept.

Through period ending Dec. 31, 1999

Pop. Mean =	35.3	34.9	34.0	34.0	35.8	35.4	35.4	35.3	35.2	35.2	34.6	34.7
Std. Deviation =	4.23	4.21	4.12	4.27	4.57	4.16	4.44	4.58	4.57	4.42	4.90	4.66
Network Mean =												
*Natl. Mean =	33.2	33.2	33.2	33.2	33.2	33.2	33.2	33.2	33.2	33.2	33.2	33.2
% Hct > 30.0	91%	90%	89%	89%	88%	91%	88%	87%	88%	90%	79%	85%
*** Network > 30.0	85%	85%	85%	85%	85%	85%	85%	85%	85%	85%	85%	85%
*** Natl. > 30.0	79%	79%	79%	79%	79%	79%	79%	79%	79%	79%	79%	79%

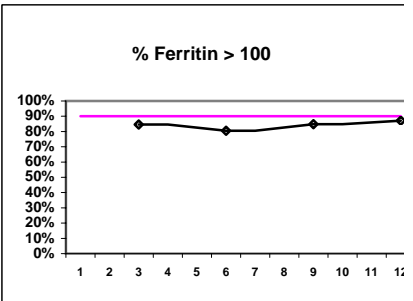


# Hct	116	121	119	116	113	107	110	110	114	102	112	119
# Hct > 33.0	78	81	74	68	74	71	86	78	74	69	66	70
Pop. Mean =	35.3	34.9	34.0	34.0	35.8	35.4	35.4	35.3	35.2	35.2	34.6	34.7
Std. Deviation =	4.23	4.21	4.12	4.27	4.57	4.16	4.44	4.58	4.57	4.42	4.90	4.66
Network Mean =												
*Natl. Mean =	33.2	33.2	33.2	33.2	33.2	33.2	33.2	33.2	33.2	33.2	33.2	33.2
% Hct > 33.0	67%	67%	62%	59%	65%	66%	78%	71%	65%	68%	59%	59%
*** Network > 33.0	64%	64%	64%	64%	64%	64%	64%	64%	64%	64%	64%	64%
*** Natl. > 33.0	56%	56%	56%	56%	56%	56%	56%	56%	56%	56%	56%	56%

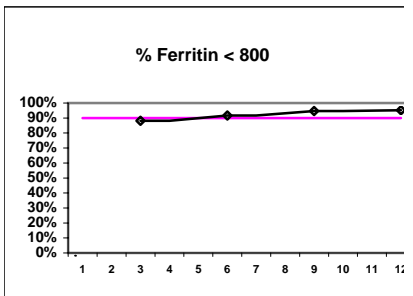


**Iron Profile**

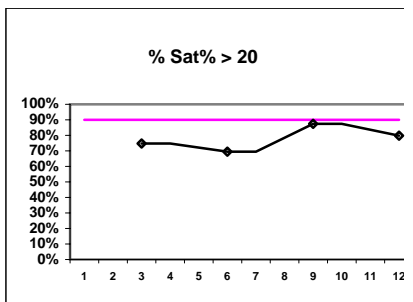
# Ferritin		110		108		112		124
# Ferritin > 100		93		87		95		108
Pop. Mean =		445		389		358		380
Std. Deviation =		369		326		246		335
Network Mean =								
Natl. Mean =								
% Ferritin > 100		85%		81%		85%		87%



# Ferritin		110		108		112		124
# Ferritin < 800		97		99		106		118
Pop. Mean =		445		389		358		380
Std. Deviation =		369		326		246		335
Network Mean =								
Natl. Mean =								
% Ferritin < 800		88%		92%		95%		95%

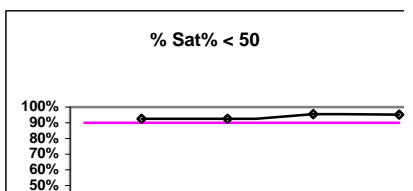


# % Sat		107		108		111		124
# % Sat > 20		80		75		97		99
Pop. Mean =		28.6		28.4		29.9		29.2
Std. Deviation =		14.5		13.4		12.1		13.3
Network Mean =								
Natl. Mean =								
% Sat% > 20		75%		69%		87%		80%



**V. ANEMIA - CONT.**

	J	F	M	A	M	J	J	A	S	O	N	D
# % Sat			107			108			111			124
# % Sat < 50			99			100			106			118
Pop. Mean =			28.6			28.4			29.9			29.2



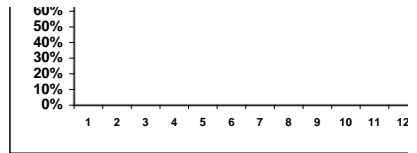
\*Methodology: a) Monthly values based on patient's monthly average of all values present for the month; b) Quarter values are average of all values for quarter; c) Values not averaged use last value present at months end.

**SCU - Haviland Kidney Center - Center Hemodialysis**  
 Quality Assurance Reports (Excludes patients in first 6 months of treatment)

I,j - I.S. Dept.

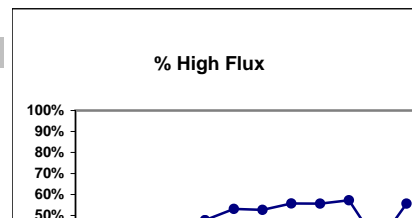
Through period ending Dec. 31, 1999

Std. Deviation =	14.5	13.4	12.1	13.3
Network Mean =				
Natl. Mean =				
<b>% Sat% &lt; 50</b>	<b>93%</b>	<b>93%</b>	<b>95%</b>	<b>95%</b>



**VI. OTHERS**

	J	F	M	A	M	J	J	A	S	O	N	D
<u>Dialyzer ratios</u>												
# Dialyzers	121	123	121	119	113	111	112	113	115	110	118	124
# High Flux	48	50	51	48	54	59	59	63	64	63	43	69



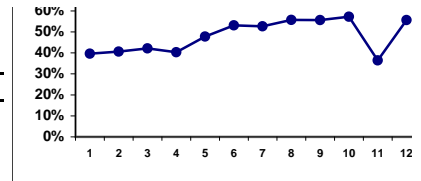
\*Methodology: a) Monthly values based on patient's monthly average of all values present for the month; b) Quarter values are average of all values for quarter; c) Values not averaged use last value present at months end.



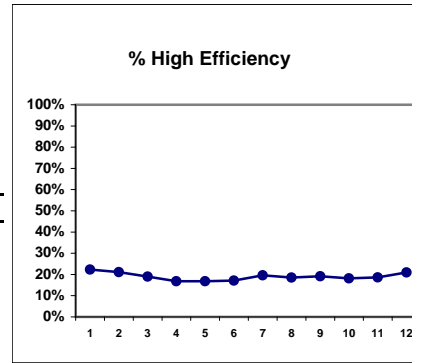
**SCU - Haviland Kidney Center - Center Hemodialysis**  
**Quality Assurance Reports (Excludes patients in first 6 months of treatment)**  
**Through period ending Dec. 31, 1999**

I,j - I.S. Dept.

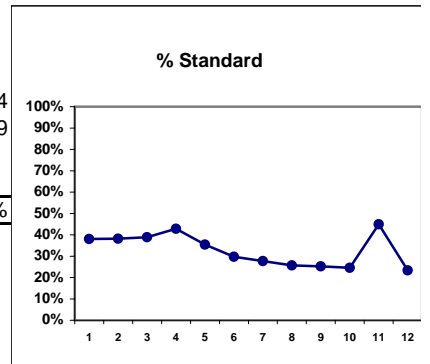
<b>Network %</b>												
<b>Natl. %</b>												
<b>% High Flux</b>	40%	41%	42%	40%	48%	53%	53%	56%	56%	57%	36%	56%



<b># Dialyzers</b>	121	123	121	119	113	111	112	113	115	110	118	124
<b># High Efficiency</b>	27	26	23	20	19	19	22	21	22	20	22	26
<b>Network %</b>												
<b>Natl. %</b>												
<b>% High Efficiency</b>	22%	21%	19%	17%	17%	17%	20%	19%	19%	18%	19%	21%



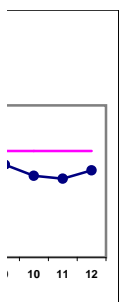
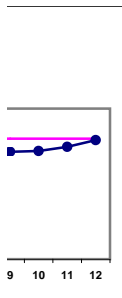
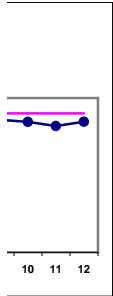
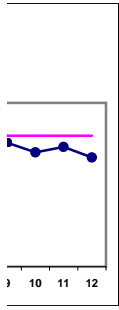
<b># Dialyzers</b>	121	123	121	119	113	111	112	113	115	110	118	124
<b># Standard</b>	46	47	47	51	40	33	31	29	29	27	53	29
<b>Network %</b>												
<b>Natl. %</b>												
<b>% Standard</b>	38%	38%	39%	43%	35%	30%	28%	26%	25%	25%	45%	23%



\*Methodology: a) Monthly values based on patient's monthly average of all values present for the month; b) Quarter values are average of all values for quarter; c) Values not averaged use last value present at months end.

**SCU - Haviland Kidney Center - Center Hemodialysis**  
**Quality Assurance Reports (Excludes patients in first 6 months of treatment)**  
**Through period ending Dec. 31, 1999**

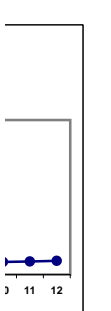
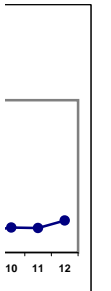
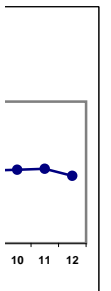
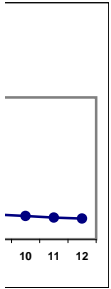
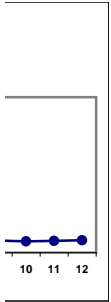
I,j - I.S. Dept.



\*Methodology: a) Monthly values based on patient's monthly average of all values present for the month; b) Quarter values are average of all values for quarter; c) Values not averaged use last value present at months end.

**SCU - Haviland Kidney Center - Center Hemodialysis**  
Quality Assurance Reports (Excludes patients in first 6 months of treatment)  
Through period ending Dec. 31, 1999

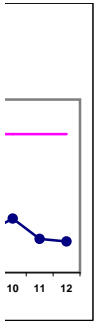
I,j - I.S. Dept.



\*Methodology: a) Monthly values based on patient's monthly average of all values present for the month; b) Quarter values are average of all values for quarter; c) Values not averaged use last value present at months end.

**SCU - Haviland Kidney Center - Center Hemodialysis**  
Quality Assurance Reports (Excludes patients in first 6 months of treatment)  
Through period ending Dec. 31, 1999

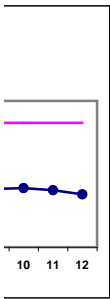
I,j - I.S. Dept.



\*Methodology: a) Monthly values based on patient's monthly average of all values present for the month; b) Quarter values are average of all values for quarter; c) Values not averaged use last value present at months end.

**SCU - Haviland Kidney Center - Center Hemodialysis**  
Quality Assurance Reports (Excludes patients in first 6 months of treatment)  
Through period ending Dec. 31, 1999

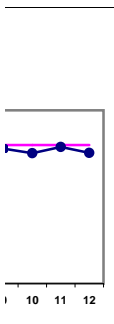
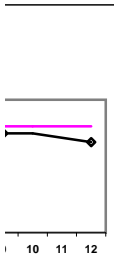
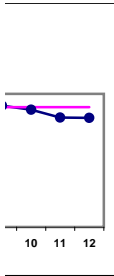
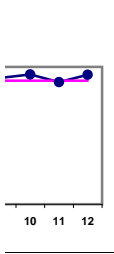
I,j - I.S. Dept.



\*Methodology: a) Monthly values based on patient's monthly average of all values present for the month; b) Quarter values are average of all values for quarter; c) Values not averaged use last value present at months end.

**SCU - Haviland Kidney Center - Center Hemodialysis**  
**Quality Assurance Reports (Excludes patients in first 6 months of treatment)**  
**Through period ending Dec. 31, 1999**

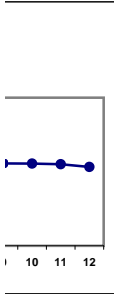
I,j - I.S. Dept.



\*Methodology: a) Monthly values based on patient's monthly average of all values present for the month; b) Quarter values are average of all values for quarter; c) Values not averaged use last value present at months end.

**SCU - Haviland Kidney Center - Center Hemodialysis**  
Quality Assurance Reports (Excludes patients in first 6 months of treatment)  
Through period ending Dec. 31, 1999

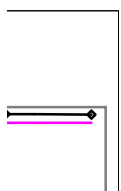
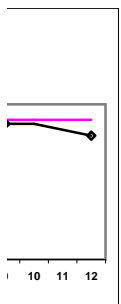
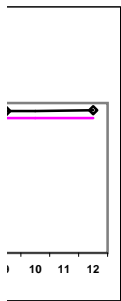
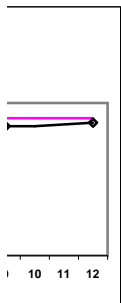
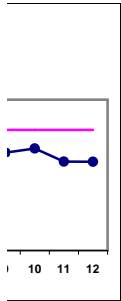
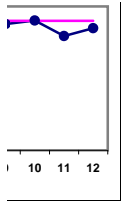
I,j - I.S. Dept.



\*Methodology: a) Monthly values based on patient's monthly average of all values present for the month; b) Quarter values are average of all values for quarter; c) Values not averaged use last value present at months end.

**SCU - Haviland Kidney Center - Center Hemodialysis**  
**Quality Assurance Reports (Excludes patients in first 6 months of treatment)**  
**Through period ending Dec. 31, 1999**

I,j - I.S. Dept.

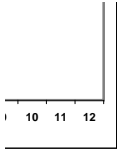


\*Methodology: a) Monthly values based on patient's monthly average of all values present for the month; b) Quarter values are average of all values for quarter; c) Values not averaged use last value present at months end.



**SCU - Haviland Kidney Center - Center Hemodialysis**  
Quality Assurance Reports (Excludes patients in first 6 months of treatment)  
Through period ending Dec. 31, 1999

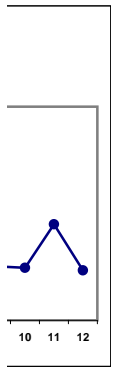
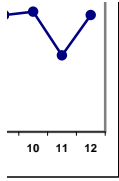
I,j - I.S. Dept.



\*Methodology: a) Monthly values based on patient's monthly average of all values present for the month; b) Quarter values are average of all values for quarter; c) Values not averaged use last value present at months end.

**SCU - Haviland Kidney Center - Center Hemodialysis**  
Quality Assurance Reports (Excludes patients in first 6 months of treatment)  
Through period ending Dec. 31, 1999

I,j - I.S. Dept.



\*Methodology: a) Monthly values based on patient's monthly average of all values present for the month; b) Quarter values are average of all values for quarter; c) Values not averaged use last value present at months end.