

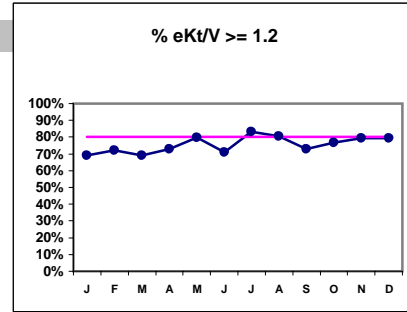
Haviland Kidney Center - SCU
 Quality Assurance Reports (Excludes patients in first 6 months of treatment)
 Through period ending Dec. 31, 2001

I,j - I.S. Dept.

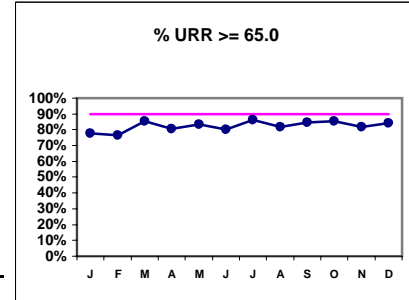
Note: Monthly values with an * are PACLAB values - as of July 2001

I. ADEQUACY OF DIALYSIS

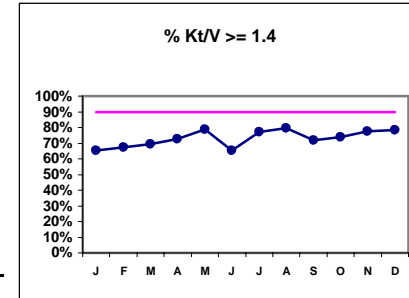
	J	F	M	A	M	J	J	A	S	O	N	D
# eKt/V	107	107	107	107	104	114	113	108	110	108	107	112
# eKt/V >= 1.2	74	77	74	78	83	81	94	87	80	83	85	89
Pop. Mean =	1.26	1.44	1.35	1.38	1.55	1.33	1.48	1.45	1.35	1.47	1.48	1.37
Std. Deviation =	0.35	0.56	0.7	0.38	0.76	0.28	0.48	0.49	0.31	0.56	0.53	0.25
Network Mean =												
Natl. Mean =												
% eKt/V >= 1.2	69%	72%	69%	73%	80%	71%	83%	81%	73%	77%	79%	79%



# URR	107	110	104	108	109	116	115	110	111	110	109	115
# URR >= 65.0	83	84	89	87	91	93	99	90	94	94	89	97
Pop. Mean =	69.7	71.8	71.7	71.9	74.2	70.8	73.6	72.7	71.8	73.4	73.7	72.3
Std. Deviation =	11.0	11.0	9.6	8.4	9.9	8.0	8.71	8.99	6.67	8.6	9.06	7.9
*Network Mean =	71.7	71.7	71.7	71.7	71.7	71.7	71.7	71.7	71.7	71.7	71.7	71.7
Natl. Mean =	68.2	68.2	68.2	68.2	68.2	68.2	68.2	68.2	68.2	68.2	68.2	68.2
% URR >= 65.0	78%	76%	86%	81%	83%	80%	86%	82%	85%	85%	82%	84%
*Network % > 65.0	86%	86%	86%	86%	86%	86%	86%	86%	86%	86%	86%	86%
*Natl. % > 65.0	82%	82%	82%	82%	82%	82%	82%	82%	82%	82%	82%	82%

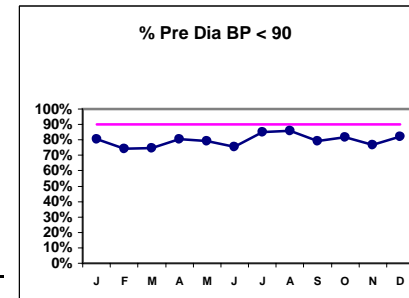


# Kt/V	107	107	105	106	103	113	113	108	110	108	106	110
# Kt/V >= 1.4	70	72	73	77	81	74	87	86	79	80	82	86
Pop. Mean =	1.45	1.66	1.58	1.59	1.80	1.53	1.71	1.67	1.56	1.70	1.71	1.58
Std. Deviation =	0.41	0.67	0.89	0.44	0.92	0.33	0.57	0.58	0.36	0.66	0.65	0.29
Network Mean =												
Natl. Mean 1999 =	1.40	1.40	1.40	1.40	1.40	1.40	1.40	1.40	1.40	1.40	1.40	1.40
% Kt/V >= 1.4	65%	67%	70%	73%	79%	65%	77%	80%	72%	74%	77%	78%
% Kt/V > 1.2	85%	85%	89%	89%	90%	86%	92%	89%	89%	89%	91%	90%
Network > 1.2 '99	83%	83%	83%	83%	83%	83%	83%	83%	83%	83%	83%	83%
Natl. % > 1.2 - 2000	86%	86%	86%	86%	86%	86%	86%	86%	86%	86%	86%	86%

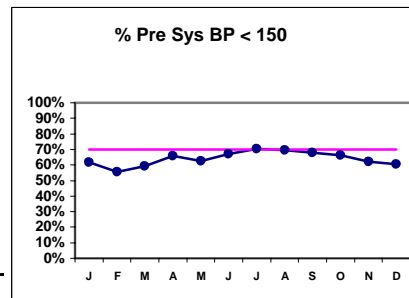


Blood Pressure Control (Pre)

# Pre Dia BP	112	113	110	108	110	118	115	112	115	115	111	117
# Pre Dia BP < 90	90	84	82	87	87	89	98	96	91	94	85	96
Pop. Mean =	79.3	80.5	78.7	77.4	78.1	76.9	76	75	77	77	78	78
Std. Deviation =	14.3	15.2	15	15.3	15.7	15.8	14.6	15.2	14.1	13.3	16.2	13.6
Network Mean =												
Natl. Mean =												
% Pre Dia BP < 90	80%	74%	75%	81%	79%	75%	85%	86%	79%	82%	77%	82%



# Pre Sys BP	112	113	110	108	110	118	115	112	115	115	111	117
# Pre Sys BP < 150	69	63	65	71	69	79	81	78	78	76	69	71
Pop. Mean =	145	147	144	143	143	142	141	140	143	145	145	146
Std. Deviation =	23.6	24.8	23.9	23.9	25.9	26.6	24.9	26	25.8	25.7	27.3	25.7
Network Mean =												
Natl. Mean =												
% Pre Sys BP < 150	62%	56%	59%	66%	63%	67%	70%	70%	68%	66%	62%	61%



*Methodology: a) Monthly values based on patient's monthly average of all values present for the month; b) Quarter values are average of all values for quarter; c) Values not averaged use last value present at months end.

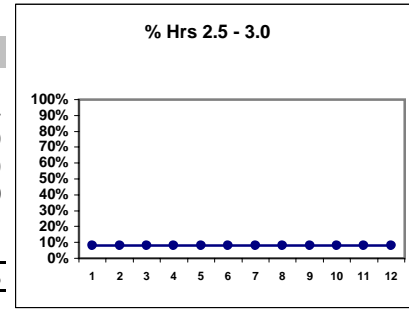
Haviland Kidney Center - SCU
Quality Assurance Reports (Excludes patients in first 6 months of treatment)
Through period ending Dec. 31, 2001

I.j - I.S. Dept.

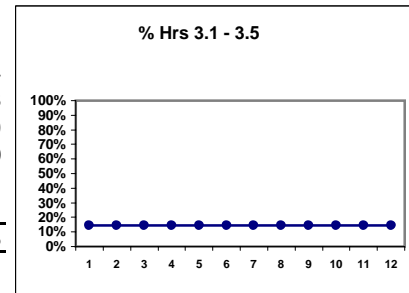
DO NOT USE THIS PAGE!!!

I. ADEQUACY OF DIALYSIS - CONT.

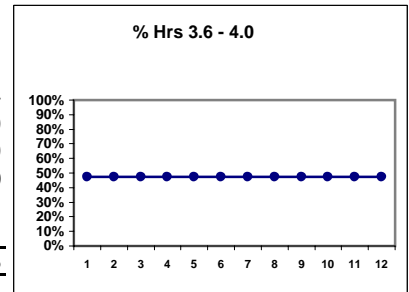
	D	D	D	D	D	D	D	D	D	D	D	D
# Dialysis Hrs	124	124	124	124	124	124	124	124	124	124	124	124
# Hrs. 2.5 - 3.0	10	10	10	10	10	10	10	10	10	10	10	10
Pop. Mean =	3.9	3.9	3.9	3.9	3.9	3.9	3.9	3.9	3.9	3.9	3.9	3.9
Std. Deviation =	0.49	0.49	0.49	0.49	0.49	0.49	0.49	0.49	0.49	0.49	0.49	0.49
Network Mean =												
Natl. Mean =												
% Hrs. 2.5 - 3.0	8%	8%	8%	8%	8%	8%	8%	8%	8%	8%	8%	8%



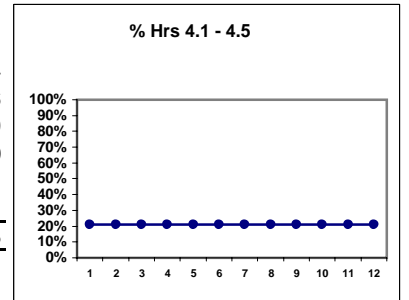
# Dialysis Hrs	124	124	124	124	124	124	124	124	124	124	124	124
# Hrs 3.1 - 3.5	18	18	18	18	18	18	18	18	18	18	18	18
Pop. Mean =	3.9	3.9	3.9	3.9	3.9	3.9	3.9	3.9	3.9	3.9	3.9	3.9
Std. Deviation =	0.49	0.49	0.49	0.49	0.49	0.49	0.49	0.49	0.49	0.49	0.49	0.49
Network Mean =												
Natl. Mean =												
% Hrs 3.1 - 3.5	15%	15%	15%	15%	15%	15%	15%	15%	15%	15%	15%	15%



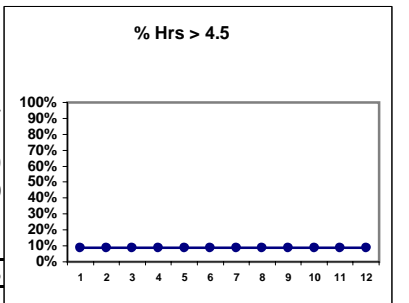
# Dialysis Hrs	124	124	124	124	124	124	124	124	124	124	124	124
# Hrs 3.6 - 4.0	59	59	59	59	59	59	59	59	59	59	59	59
Pop. Mean =	3.9	3.9	3.9	3.9	3.9	3.9	3.9	3.9	3.9	3.9	3.9	3.9
Std. Deviation =	0.49	0.49	0.49	0.49	0.49	0.49	0.49	0.49	0.49	0.49	0.49	0.49
Network Mean =												
Natl. Mean =												
% Hrs 3.6 - 4.0	48%	48%	48%	48%	48%	48%	48%	48%	48%	48%	48%	48%



# Dialysis Hrs	124	124	124	124	124	124	124	124	124	124	124	124
# Hrs 4.1 - 4.5	26	26	26	26	26	26	26	26	26	26	26	26
Pop. Mean =	3.9	3.9	3.9	3.9	3.9	3.9	3.9	3.9	3.9	3.9	3.9	3.9
Std. Deviation =	0.49	0.49	0.49	0.49	0.49	0.49	0.49	0.49	0.49	0.49	0.49	0.49
Network Mean =												
Natl. Mean =												
% Hrs 4.1 - 4.5	21%	21%	21%	21%	21%	21%	21%	21%	21%	21%	21%	21%



# Dialysis Hrs	124	124	124	124	124	124	124	124	124	124	124	124
# Hrs > 4.5	11	11	11	11	11	11	11	11	11	11	11	11
Pop. Mean =	3.9	3.9	3.9	3.9	3.9	3.9	3.9	3.9	3.9	3.9	3.9	3.9
Std. Deviation =	0.49	0.49	0.49	0.49	0.49	0.49	0.49	0.49	0.49	0.49	0.49	0.49
Network Mean =												
Natl. Mean =												
% Hrs > 4.5	9%	9%	9%	9%	9%	9%	9%	9%	9%	9%	9%	9%



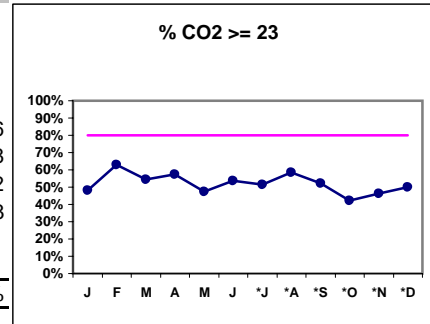
*Methodology: a) Monthly values based on patient's monthly average of all values present for the month; b) Quarter values are average of all values for quarter; c) Values not averaged use last value present at months end.

Haviland Kidney Center - SCU
Quality Assurance Reports (Excludes patients in first 6 months of treatment)
Through period ending Dec. 31, 2001

I,j - I.S. Dept.

I. ADEQUACY OF DIALYSIS - CONT.

	J	F	M	A	M	J	*J	*A	*S	*O	*N	*D
# CO2	110	113	110	108	110	117	115	111	113	111	110	116
# CO2 >= 23	53	71	60	62	52	63	59	65	59	47	51	58
Pop. Mean =	22	23.3	22.7	22.8	22.2	22.7	23	23	22	21	22	22
Std. Deviation =	4.11	3.28	3.03	2.91	3.26	2.95	2.64	3.58	4.09	4.79	3.91	3.58
Network Mean =												
Natl. Mean =												
% CO2 >= 23	48%	63%	55%	57%	47%	54%	51%	59%	52%	42%	46%	50%



*Methodology: a) Monthly values based on patient's monthly average of all values present for the month; b) Quarter values are average of all values for quarter; c) Values not averaged use last value present at months end.

Haviland Kidney Center - SCU

I.j - I.S. Dept.

Quality Assurance Reports (Excludes patients in first 6 months of treatment)

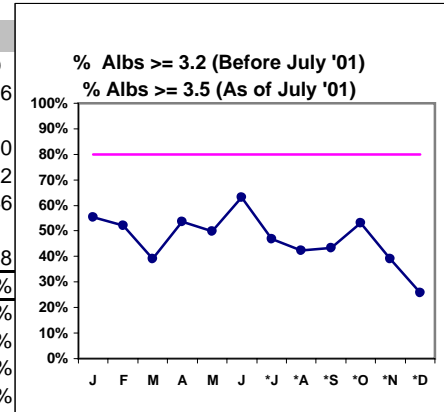
Through period ending Dec. 31, 2001

*Albumin values use BCG method - as of July 2001

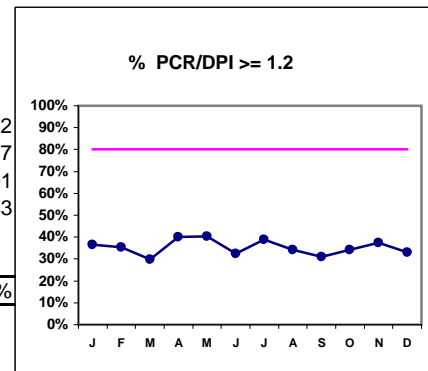
II. NUTRITION

	J	F	M	A	M	J	*J	*A	*S	*O	*N	*D
# Albumin	110	113	110	108	110	117	115	111	113	111	110	116
# Albumin >= 3.2	61	59	43	58	55	74						
# Albumin >= 3.5							54	47	49	59	43	30
Pop. Mean =	3.2	3.2	3.1	3.2	3.1	3.2	3.4	3.4	3.4	3.4	3.3	3.2
Std. Deviation =	0.39	0.41	0.45	0.44	0.47	0.51	0.37	0.41	0.42	0.43	0.42	0.46
Network Mean =												
Natl. Mean =	3.8	3.8	3.8	3.8	3.8	3.8	3.8	3.8	3.8	3.8	3.8	3.8
% Alb >= 3.2 or 3.5	55%	52%	39%	54%	50%	63%	47%	42%	43%	53%	39%	26%
SCU % >= 3.7							19%	26%	25%	19%	21%	16%
SCU % >= 4.0							5%	5%	4%	4%	5%	1%
*Natl. % >= 3.5-BCG							80%	80%	80%	80%	80%	80%
*Natl. % >= 4.0-BCG							29%	29%	29%	29%	29%	29%
*Network Mean =	77%	77%	77%	77%	77%	77%	77%	77%	77%	77%	77%	77%

*Figures for 2000



	J	F	M	A	M	J	*J	*A	*S	*O	*N	*D
# PCR/DPI	107	107	107	107	104	114	113	108	110	108	107	112
# PCR/DPI >= 1.2	39	38	32	43	42	37	44	37	34	37	40	37
Pop. Mean =	1.04	1.07	0.99	1.06	1.09	1.03	1.07	1.04	1.03	1.05	1.08	1.01
Std. Deviation =	0.36	0.35	0.37	0.29	0.35	0.28	0.28	0.32	0.28	0.29	0.31	0.33
Network Mean =												
Natl. Mean =												
% PCR/DPI >= 1.2	36%	36%	30%	40%	40%	32%	39%	34%	31%	34%	37%	33%



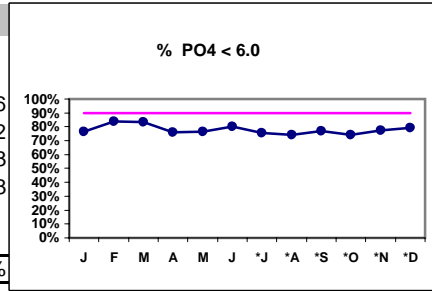
*Methodology: a) Monthly values based on patient's monthly average of all values present for the month; b) Quarter values are average of all values for quarter; c) Values not averaged use last value present at months end.

Haviland Kidney Center - SCU
Quality Assurance Reports (Excludes patients in first 6 months of treatment)
Through period ending Dec. 31, 2001

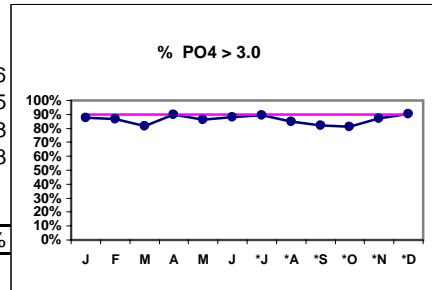
I.j - I.S. Dept.

III. OSTEODYSTROPHY

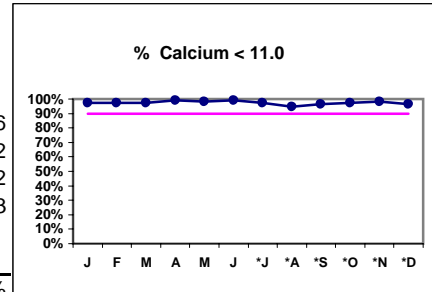
	J	F	M	A	M	J	*J	*A	*S	*O	*N	*D
# PO4	111	113	110	108	110	117	115	112	113	112	110	116
# PO4 < 6.0	85	95	92	82	84	94	87	83	87	83	85	92
Pop. Mean =	4.91	4.64	4.61	4.9	4.96	4.71	4.97	4.94	4.75	4.8	4.88	4.88
Std. Deviation	1.65	1.56	1.64	1.84	1.8	1.69	1.87	1.68	1.67	1.79	1.61	1.78
Network Mean =												
Natl. Mean =												
% PO4 < 6.0	77%	84%	84%	76%	76%	80%	76%	74%	77%	74%	77%	79%



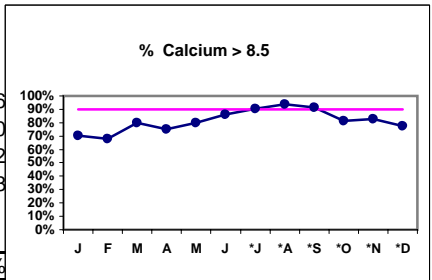
# PO4	111	113	110	108	110	117	115	112	113	112	110	116
# PO4 > 3.0	97	98	90	97	95	103	103	95	93	91	96	105
Pop. Mean =	4.91	4.64	4.61	4.9	4.96	4.71	4.97	4.94	4.75	4.8	4.88	4.88
Std. Deviation	1.65	1.56	1.64	1.84	1.8	1.69	1.87	1.68	1.67	1.79	1.61	1.78
Network Mean =												
Natl. Mean =												
% PO4 > 3.0	87%	87%	82%	90%	86%	88%	90%	85%	82%	81%	87%	91%



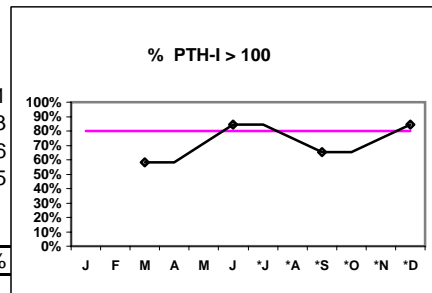
# Calcium	111	113	110	108	110	117	115	112	113	112	110	116
# Calcium < 11.0	108	110	107	107	108	116	112	106	109	109	108	112
Pop. Mean =	9.06	8.91	9.11	8.97	9.22	9.24	9.4	9.6	9.5	9.2	9.2	9.2
Std. Deviation	0.93	0.94	0.90	0.75	0.83	0.74	0.77	0.75	0.8	0.87	0.82	0.83
Network Mean =												
Natl. Mean =												
% Calcium < 11.0	97%	97%	97%	99%	98%	99%	97%	95%	96%	97%	98%	97%



# Calcium	111	113	110	108	110	117	115	112	113	112	110	116
# Calcium > 8.5	78	77	88	81	88	101	104	105	103	91	91	90
Pop. Mean =	9.06	8.91	9.11	8.97	9.22	9.24	9.4	9.6	9.5	9.2	9.2	9.2
Std. Deviation =	0.93	0.94	0.90	0.75	0.83	0.74	0.77	0.75	0.8	0.87	0.82	0.83
Network Mean =												
Natl. Mean =												
% Calcium > 8.5	70%	68%	80%	75%	80%	86%	90%	94%	91%	81%	83%	78%



# PTH-I		110		52		113		51
# PTH-I > 100		64		44		74		43
Pop. Mean =		226		328		270		366
Std. Deviation =		259		247		296		305
Network Mean =								
Natl. Mean =								
% PTH-I > 100		58%		85%		65%		84%



*Methodology: a) Monthly values based on patient's monthly average of all values present for the month; b) Quarter values are average of all values for quarter; c) Values not averaged use last value present at months end.

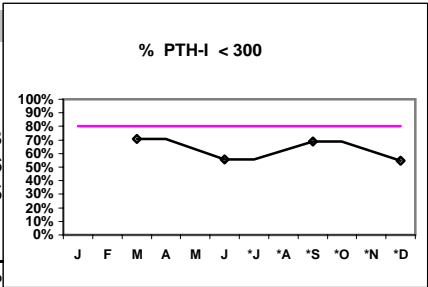
Haviland Kidney Center - SCU

I,j - I.S. Dept.

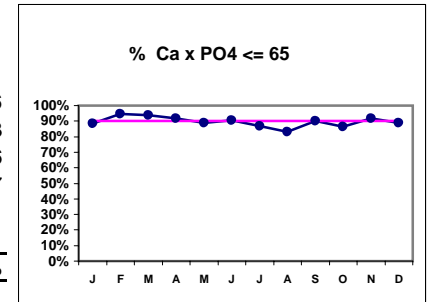
Quality Assurance Reports (Excludes patients in first 6 months of treatment)
Through period ending Dec. 31, 2001

III. OSTEODYSTROPHY - CONT.

	J	F	M	A	M	J	*J	*A	*S	*O	*N	*D
# PTH-I			110			52			113			51
# PTH-I < 300			78			29			78			28
Pop. Mean =			226			328			270			366
Std. Deviation =			259			247			296			305
Network Mean =												
Natl. Mean =												
% PTH-I < 300			71%			56%			69%			55%



# Ca x PO4	111	113	110	108	110	117	115	112	113	112	110	116
# Ca x PO4 <= 65	98	107	103	99	98	106	100	93	102	97	101	103
Pop. Mean =	44.1	40.8	41.6	43.5	45.3	43.4	46.7	47.5	45.1	43.8	44.8	44.6
Std. Deviation =	14.4	12.4	13.9	15.0	15.6	15.3	16.8	16.3	16.0	15.9	14.6	15.7
Network Mean =												
Natl. Mean =												
% Ca x PO4 <= 65	88%	95%	94%	92%	89%	91%	87%	83%	90%	87%	92%	89%



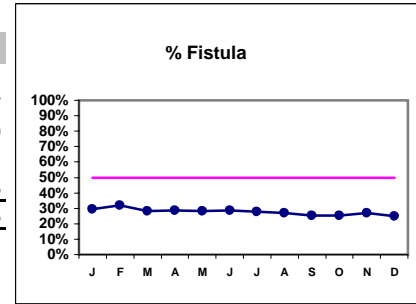
*Methodology: a) Monthly values based on patient's monthly average of all values present for the month; b) Quarter values are average of all values for quarter; c) Values not averaged use last value present at months end.

Haviland Kidney Center - SCU
Quality Assurance Reports (Excludes patients in first 6 months of treatment)
Through period ending Dec. 31, 2001

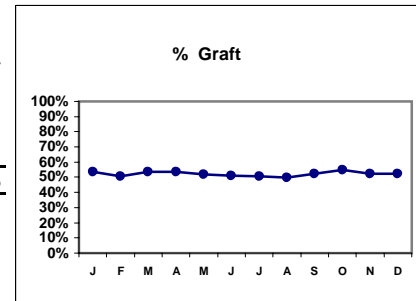
I.j - I.S. Dept.

IV. ACCESS

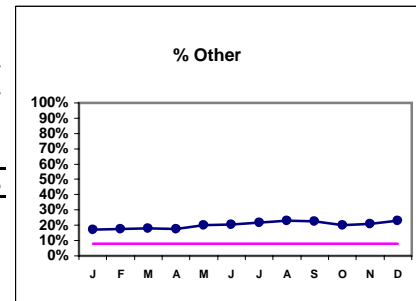
	J	F	M	A	M	J	J	A	S	O	N	D
# Access	112	113	110	108	110	118	115	112	115	115	111	117
# Fistula	33	36	31	31	31	34	32	30	29	29	30	29
Network %												
Natl. % - 2000	30%	30%	30%	30%	30%	30%	30%	30%	30%	30%	30%	30%
% Fistula	29%	32%	28%	29%	28%	29%	28%	27%	25%	25%	27%	25%



# Access	112	113	110	108	110	118	115	112	115	115	111	117
# Graft	60	57	59	58	57	60	58	56	60	63	58	61
Network %												
Natl. %												
% Graft	54%	50%	54%	54%	52%	51%	50%	50%	52%	55%	52%	52%



# Access	112	113	110	108	110	118	115	112	115	115	111	117
# Other	19	20	20	19	22	24	25	26	26	23	23	27
Network %												
Natl. %												
% Other	17%	18%	18%	18%	20%	20%	22%	23%	23%	20%	21%	23%



*Methodology: a) Monthly values based on patient's monthly average of all values present for the month; b) Quarter values are average of all values for quarter; c) Values not averaged use last value present at months end.

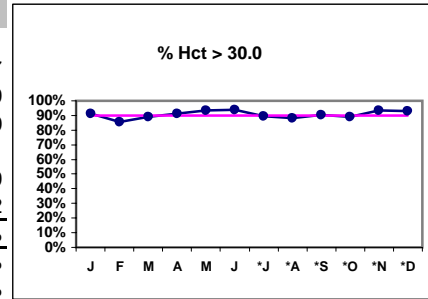
Haviland Kidney Center - SCU
 Quality Assurance Reports (Excludes patients in first 6 months of treatment)
 Through period ending Dec. 31, 2001

I.j - I.S. Dept.

***Hct. values use Coulter method - as of July 2001**

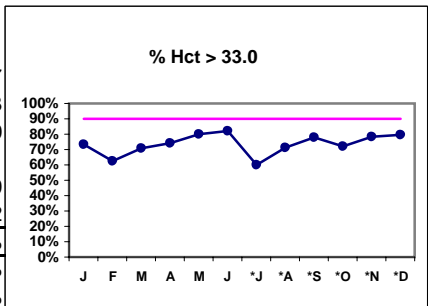
V. ANEMIA

	J	F	M	A	M	J	*J	*A	*S	*O	*N	*D
# Hct	112	112	110	105	109	116	115	111	113	111	110	117
# Hct > 30.0	102	96	98	96	102	109	103	98	102	99	103	109
Pop. Mean =	35.5	35.0	35.4	35.7	36.2	36.4	34.3	35.0	35.3	35.4	35.8	36.0
Std. Deviation =	4.10	4.54	4.24	3.93	3.98	4.10	4.3	4.3	4.0	4.2	3.9	4.1
Network Mean =	33.9	33.9	33.9	33.9	33.9	33.9	33.9	33.9	33.9	33.9	33.9	33.9
*Natl. Mean =	34.2	34.2	34.2	34.2	34.2	34.2	34.2	34.2	34.2	34.2	34.2	34.2
% Hct > 30.0	91%	86%	89%	91%	94%	94%	90%	88%	90%	89%	94%	93%
***% Network > 30.0	89%	89%	89%	89%	89%	89%	89%	89%	89%	89%	89%	89%
***% Natl. > 30.0	79%	79%	79%	79%	79%	79%	79%	79%	79%	79%	79%	79%



* Figures for 2000

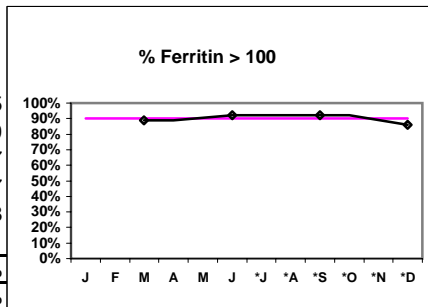
# Hct	112	112	110	105	109	116	115	111	113	111	110	117
# Hct > 33.0	82	70	78	78	87	95	69	79	88	80	86	93
Pop. Mean =	35.5	35.0	35.4	35.7	36.2	36.4	34.3	35.0	35.3	35.4	35.8	36.0
Std. Deviation =	4.10	4.54	4.24	3.93	3.98	4.10	4.3	4.3	4.0	4.2	3.9	4.1
Network Mean =	33.9	33.9	33.9	33.9	33.9	33.9	33.9	33.9	33.9	33.9	33.9	33.9
Natl. Mean =	34.2	34.2	34.2	34.2	34.2	34.2	34.2	34.2	34.2	34.2	34.2	34.2
% Hct > 33.0	73%	63%	71%	74%	80%	82%	60%	71%	78%	72%	78%	79%
***% Network > 33.0	74%	74%	74%	74%	74%	74%	74%	74%	74%	74%	74%	74%
***% Natl. > 33.0	73%	73%	73%	73%	73%	73%	73%	73%	73%	73%	73%	73%



*Figures for 2000

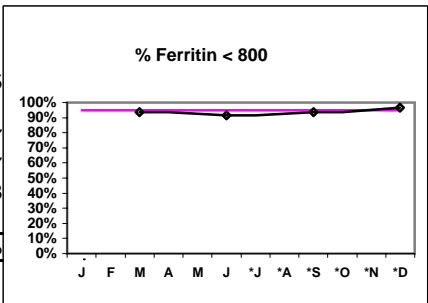
Iron Profile

# Ferritin		107		117		113		115
# Ferritin > 100		95		108		104		99
Pop. Mean =		372		398		318		337
Std. Deviation =		259		322		238		237
*Network Mean =		428		428		428		428
Natl. Mean =								
% Ferritin > 100		89%		92%		92%		86%
***% Network > 100		86%		86%		86%		86%



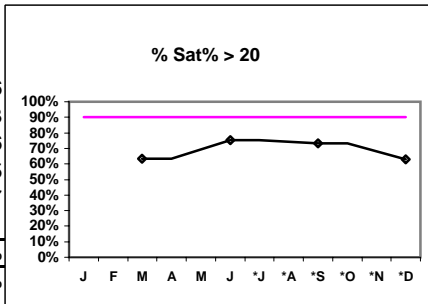
* Figures for 2000

# Ferritin		107		117		113		115
# Ferritin < 800		100		107		106		111
Pop. Mean =		372		398		318		337
Std. Deviation =		259		322		238		237
*Network Mean =		428		428		428		428
Natl. Mean =								
% Ferritin < 800		93%		91%		94%		97%



*Figures for 2000

# % Sat		107		118		113		116
# % Sat > 20		68		89		83		73
Pop. Mean =		26.2		28.9		26.6		24.6
Std. Deviation =		13.7		14.4		9.64		9.95
*Network Mean =		27		27		27		27
Natl. Mean =								
% Sat% > 20		64%		75%		73%		63%
***% Network > 20		72%		72%		72%		72%



* Figures for 2000

*Methodology: a) Monthly values based on patient's monthly average of all values present for the month; b) Quarter values are average of all values for quarter; c) Values not averaged use last value present at months end.

Haviland Kidney Center - SCU

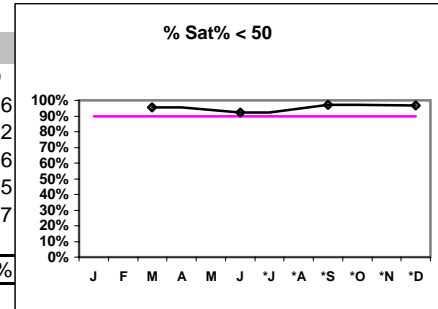
I,j - I.S. Dept.

Quality Assurance Reports (Excludes patients in first 6 months of treatment)
Through period ending Dec. 31, 2001

V. ANEMIA - CONT.

	J	F	M	A	M	J	*J	*A	*S	*O	*N	*D
# % Sat			107			118			113			116
# % Sat < 50			102			109			110			112
Pop. Mean =			26.2			28.9			26.6			24.6
Std. Deviation =			13.7			14.4			9.64			9.95
*Network Mean =			27			27			27			27
Natl. Mean =												
% Sat% < 50			95%			92%			97%			97%

*Figures for 2000



*Methodology: a) Monthly values based on patient's monthly average of all values present for the month; b) Quarter values are average of all values for quarter; c) Values not averaged use last value present at months end.

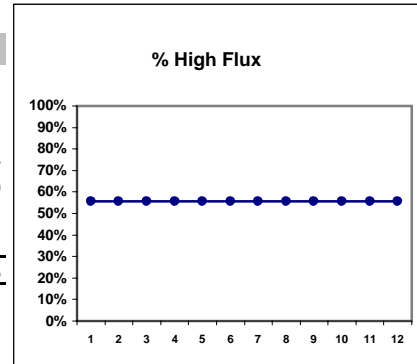
Haviland Kidney Center - SCU
Quality Assurance Reports (Excludes patients in first 6 months of treatment)
Through period ending Dec. 31, 2001

I.j - I.S. Dept.

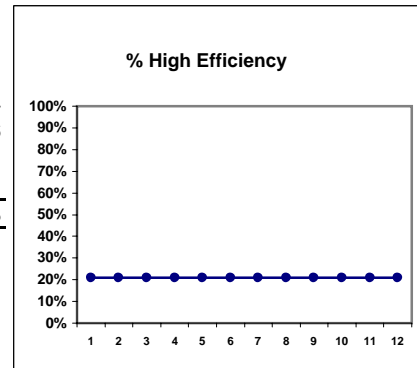
DO NOT USE THIS PAGE!!!

VI. OTHERS

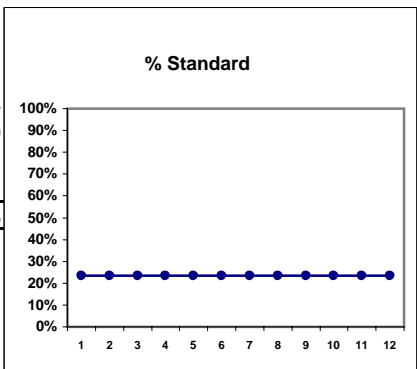
	D	D	D	D	D	D	D	D	D	D	D	D
<u>Dialyzer ratios</u>												
# Dialyzers	124	124	124	124	124	124	124	124	124	124	124	124
# High Flux	69	69	69	69	69	69	69	69	69	69	69	69
Network %												
Natl. %												
% High Flux	56%	56%	56%	56%	56%	56%	56%	56%	56%	56%	56%	56%



# Dialyzers	124	124	124	124	124	124	124	124	124	124	124	124
# High Efficiency	26	26	26	26	26	26	26	26	26	26	26	26
Network %												
Natl. %												
% High Efficiency	21%	21%	21%	21%	21%	21%	21%	21%	21%	21%	21%	21%



# Dialyzers	124	124	124	124	124	124	124	124	124	124	124	124
# Standard	29	29	29	29	29	29	29	29	29	29	29	29
Network %												
Natl. %												
% Standard	23%	23%	23%	23%	23%	23%	23%	23%	23%	23%	23%	23%



*Methodology: a) Monthly values based on patient's monthly average of all values present for the month; b) Quarter values are average of all values for quarter; c) Values not averaged use last value present at months end.

Haviland Kidney Center - SCU
Quality Assurance Reports (Excludes patients in first 6 months of treatment)
Through period ending Dec. 31, 2001

I,j - I.S. Dept.

***Methodology: a) Monthly values based on patient's monthly average of all values present for the month; b) Quarter values are average of all values for quarter; c) Values not averaged use last value present at months end.**