

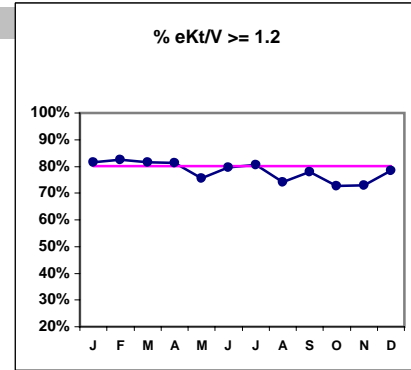
Haviland Kidney Center - SCU

Quality Assurance Reports (Excludes patients in first 3 months of treatment - as of Dec. 31, 2002)

Through period ending Dec. 31, 2002

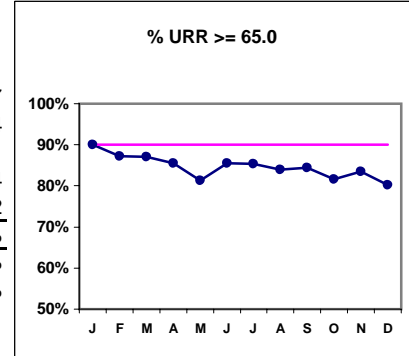
I. ADEQUACY OF DIALYSIS

	J	F	M	A	M	J	J	A	S	O	N	D
# eKt/V	109	109	103	102	110	108	113	112	113	114	115	121
# eKt/V >= 1.2	89	90	84	83	83	86	91	83	88	83	84	95
Pop. Mean =	1.45	1.52	1.50	1.42	1.49	1.72	1.61	1.39	1.56	1.37	1.47	1.51
Std. Deviation =	0.40	0.68	0.63	0.51	0.74	2.23	0.79	0.42	0.73	0.33	0.65	0.59
Network Mean =												
Natl. Mean =												
% eKt/V >= 1.2	82%	83%	82%	81%	75%	80%	81%	74%	78%	73%	73%	79%

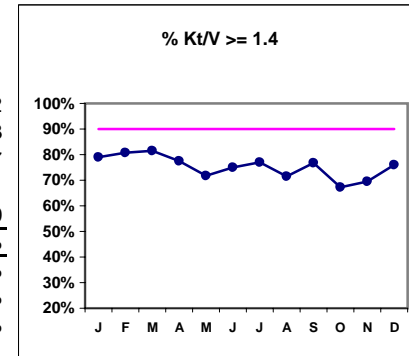


# URR	110	109	108	104	112	110	116	112	115	114	115	121
# URR >= 65.0	99	95	94	89	91	94	99	94	97	93	96	97
Pop. Mean =	73.4	73.5	73.8	72.6	72.6	73.9	75.1	71.6	73.3	72	72.6	73.4
Std. Deviation =	7.68	11.1	8.41	7.47	9.88	9.19	10.6	9.06	11.9	7.84	8.9	9.81
*Network Mean =	72.4	72.4	72.4	72.4	72.4	72.4	72.4	72.4	72.4	72.4	72.4	72.4
Natl. Mean =	68.2	68.2	68.2	68.2	68.2	68.2	68.2	68.2	68.2	68.2	68.2	68.2
% URR >= 65.0	90%	87%	87%	86%	81%	85%	85%	84%	84%	82%	83%	80%
*Network % > 65.0	87%	87%	87%	87%	87%	87%	87%	87%	87%	87%	87%	87%
*Natl. % > 65.0	82%	82%	82%	82%	82%	82%	82%	82%	82%	82%	82%	82%

* Figures for 2000



# Kt/V	109	109	103	102	110	108	113	112	112	113	115	121
# Kt/V >= 1.4	86	88	84	79	79	81	87	80	86	76	80	92
Pop. Mean =	1.67	1.75	1.73	1.63	1.72	1.99	1.86	1.59	1.80	1.57	1.70	1.73
Std. Deviation =	0.44	0.80	0.75	0.58	0.87	2.60	0.91	0.47	0.88	0.38	0.77	0.7
Network Mean =	1.61	1.61	1.61	1.61	1.61	1.61	1.61	1.61	1.61	1.61	1.61	1.61
Natl. Mean 1999 =	1.40	1.40	1.40	1.40	1.40	1.40	1.40	1.40	1.40	1.40	1.40	1.40
% Kt/V >= 1.4	79%	81%	82%	77%	72%	75%	77%	71%	77%	67%	70%	76%
% Kt/V > 1.2	93%	90%	91%	90%	89%	91%	88%	88%	92%	87%	87%	87%
Network > 1.2 '00	93%	93%	93%	93%	93%	93%	93%	93%	93%	93%	93%	93%
Natl. % > 1.2 - 2001	91%	91%	91%	91%	91%	91%	91%	91%	91%	91%	91%	91%



*Methodology: a) Monthly values based on patient's monthly average of all values present for the month; b) Quarter values are average of all values for quarter; c) Values not averaged use last value present at months end.

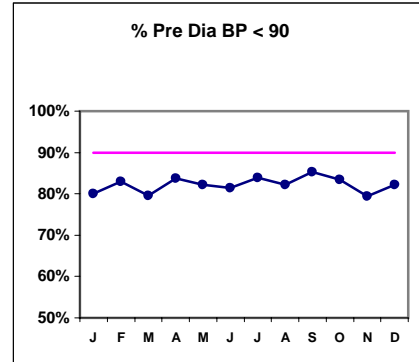
Haviland Kidney Center - SCU

Quality Assurance Reports (Excludes patients in first 3 months of treatment - as of Dec. 31, 2002)

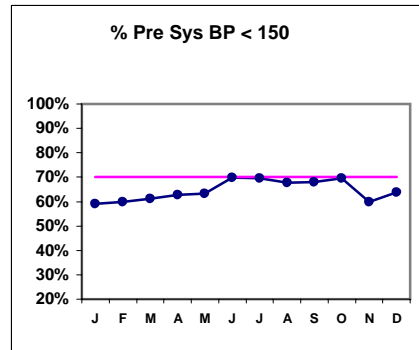
Through period ending Dec. 31, 2002

I. ADEQUACY OF DIALYSIS - CONT.

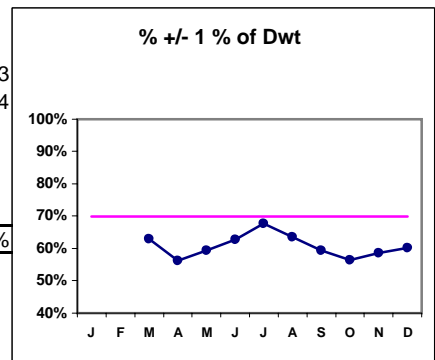
	J	F	M	A	M	J	J	A	S	O	N	D
Blood Pressure Control (Pre)												
# Pre Dia BP	110	112	108	105	112	113	118	118	116	115	117	124
# Pre Dia BP < 90	88	93	86	88	92	92	99	97	99	96	93	102
Pop. Mean =	78	78	78	77	77	76	75	77	77	77	78	78
Std. Deviation =	13.3	13.6	14.2	14.5	14.5	15.3	14.7	14.2	14	14.2	14.6	14.8
Network Mean =												
Natl. Mean =												
% Pre Dia BP < 90	80%	83%	80%	84%	82%	81%	84%	82%	85%	83%	79%	82%



# Pre Sys BP	110	112	108	105	112	113	118	118	116	115	117	124
# Pre Sys BP < 150	65	67	66	66	71	79	82	80	79	80	70	79
Pop. Mean =	146	145	146	144	143	140	138	140	141	142	144	144
Std. Deviation =	24.9	24.8	24.4	24.8	25.4	24.3	23.5	22.3	22.4	22.2	22.5	22.6
Network Mean =												
Natl. Mean =												
% Pre Sys BP < 150	59%	60%	61%	63%	63%	70%	69%	68%	68%	70%	60%	64%



# Post/Dwt	108	105	111	113	118	118	116	115	116	123
# +/- 1% Dwt	68	59	66	71	80	75	69	65	68	74
% +/- 1% of Dwt	63%	56%	59%	63%	68%	64%	59%	57%	59%	60%



*Methodology: a) Monthly values based on patient's monthly average of all values present for the month; b) Quarter values are average of all values for quarter; c) Values not averaged use last value present at months end.

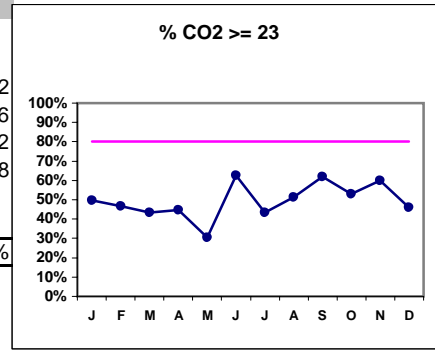
Haviland Kidney Center - SCU

Quality Assurance Reports (Excludes patients in first 3 months of treatment - as of Dec. 31, 2002)

Through period ending Dec. 31, 2002

I. ADEQUACY OF DIALYSIS - CONT.

	J	F	M	A	M	J	J	A	S	O	N	D
# CO2	109	111	108	105	112	110	118	115	116	115	115	122
# CO2 >= 23	54	52	47	47	34	69	51	59	72	61	69	56
Pop. Mean =	22	22	22	22	21	23	22	22	23	22	22	22
Std. Deviation =	3.52	3.65	2.82	3.16	3.1	4.92	2.51	4.54	3.14	3.02	4.14	3.88
Network Mean =												
Natl. Mean =												
% CO2 >= 23	50%	47%	44%	45%	30%	63%	43%	51%	62%	53%	60%	46%



*Methodology: a) Monthly values based on patient's monthly average of all values present for the month; b) Quarter values are average of all values for quarter; c) Values not averaged use last value present at months end.

Haviland Kidney Center - SCU

Quality Assurance Reports (Excludes patients in first 3 months of treatment - as of Dec. 31, 2002)

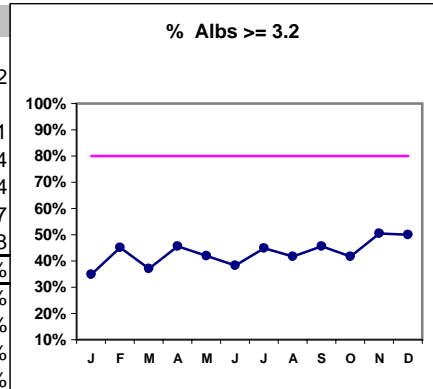
Through period ending Dec. 31, 2002

*Albumin values use BCG method - as of July 2001

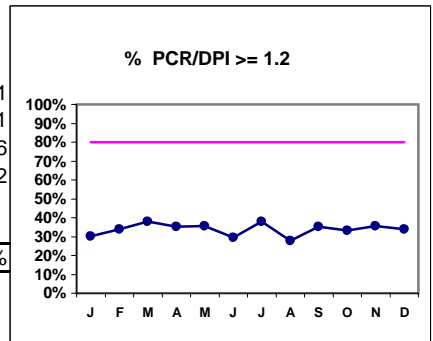
II. NUTRITION

	J	F	M	A	M	J	J	A	S	O	N	D
# Albumin	109	111	108	105	112	110	118	115	116	115	115	122
# Albumin >= 3.5	38	50	40	48	47	42	53	48	53	48	58	61
Pop. Mean =	3.2	3.3	3.3	3.3	3.3	3.3	3.4	3.3	3.4	3.4	3.4	3.4
Std. Deviation =	0.45	0.45	0.44	0.45	0.41	0.46	0.46	0.41	0.44	0.47	0.44	0.44
Network Mean =	3.7	3.7	3.7	3.7	3.7	3.7	3.7	3.7	3.7	3.7	3.7	3.7
Natl. Mean =	3.8	3.8	3.8	3.8	3.8	3.8	3.8	3.8	3.8	3.8	3.8	3.8
% Alb >= 3.5	35%	45%	37%	46%	42%	38%	45%	42%	46%	42%	50%	50%
SCU % >= 3.7	17%	22%	19%	22%	21%	21%	25%	21%	22%	24%	28%	27%
SCU % >= 4.0	1%	5%	2%	4%	1%	5%	9%	3%	4%	10%	13%	11%
*Natl % >= 3.5-BCG	80%	80%	80%	80%	80%	80%	80%	80%	80%	80%	80%	80%
*Natl. % >= 4.0-BCG	29%	29%	29%	29%	29%	29%	29%	29%	29%	29%	29%	29%
*Netwk%>=3.5 BCG	79%	79%	79%	79%	79%	79%	79%	79%	79%	79%	79%	79%
*Netwk%>=4.0 BCG	29%	29%	29%	29%	29%	29%	29%	29%	29%	29%	29%	29%

*Figures for 2000



	J	F	M	A	M	J	J	A	S	O	N	D
# PCR/DPI	109	109	103	102	110	108	113	112	113	114	115	121
# PCR/DPI >= 1.2	33	37	39	36	39	32	43	31	40	38	41	41
Pop. Mean =	1.02	1.06	1.05	1.03	1.05	1.05	1.09	1.05	1.06	1.04	1.06	1.06
Std. Deviation =	0.40	0.34	0.33	0.29	0.28	0.32	0.31	0.34	0.32	0.32	0.34	0.32
Network Mean =												
Natl. Mean =												
% PCR/DPI >= 1.2	30%	34%	38%	35%	35%	30%	38%	28%	35%	33%	36%	34%



*Methodology: a) Monthly values based on patient's monthly average of all values present for the month; b) Quarter values are average of all values for quarter; c) Values not averaged use last value present at months end.

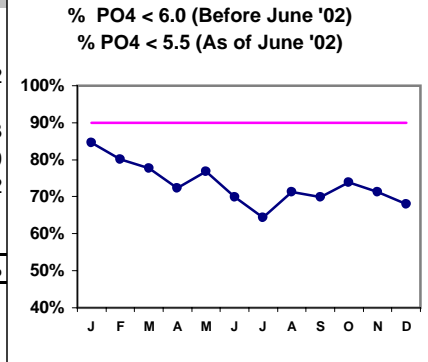
Haviland Kidney Center - SCU

Quality Assurance Reports (Excludes patients in first 3 months of treatment - as of Dec. 31, 2002)

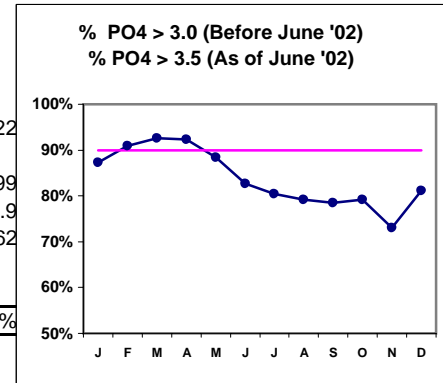
Through period ending Dec. 31, 2002

III. OSTEODYSTROPHY

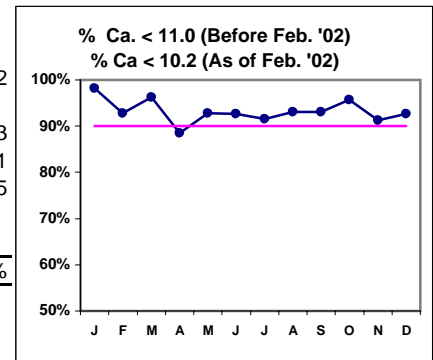
	J	F	M	A	M	J	J	A	S	O	N	D
# PO4	110	111	108	105	112	110	118	115	116	115	115	122
# PO4 < 6.0	93	89	84	76	86							
# PO4 < 5.5						77	76	82	81	85	82	83
Pop. Mean =	4.6	5	4.95	5.07	4.9	4.87	4.95	4.76	4.87	4.71	4.64	4.9
Std. Deviation	1.67	1.6	1.58	1.52	1.66	1.63	1.62	1.54	1.76	1.52	1.58	1.62
Network Mean =												
Natl. Mean =												
% PO4 < 6.0 or 5.5	85%	80%	78%	72%	77%	70%	64%	71%	70%	74%	71%	68%



# PO4	110	111	108	105	112	110	118	115	116	115	115	122
# PO4 > 3.0	96	101	100	97	99							
# PO4 > 3.5						91	95	91	91	91	84	99
Pop. Mean =	4.6	5	4.95	5.07	4.9	4.87	4.95	4.76	4.87	4.71	4.64	4.9
Std. Deviation	1.67	1.6	1.58	1.52	1.66	1.63	1.62	1.54	1.76	1.52	1.58	1.62
Network Mean =												
Natl. Mean =												
% PO4 > 3.0 or 3.5	87%	91%	93%	92%	88%	83%	81%	79%	78%	79%	73%	81%



# Calcium	110	111	108	105	112	110	118	115	116	115	115	122
# Calcium < 11.0	108											
# Calcium < 10.2		103	104	93	104	102	108	107	108	110	105	113
Pop. Mean =	9.1	9.1	9.0	9.3	9.2	9.1	9.2	9.1	9.1	9.1	9.4	9.1
Std. Deviation	0.74	0.78	0.74	0.76	0.71	0.67	0.79	0.69	0.84	0.7	0.66	0.85
Network Mean =												
Natl. Mean =												
% Ca < 11.0 or 10.2	98%	93%	96%	89%	93%	93%	92%	93%	93%	96%	91%	93%



*Methodology: a) Monthly values based on patient's monthly average of all values present for the month; b) Quarter values are average of all values for quarter; c) Values not averaged use last value present at months end.

Haviland Kidney Center - SCU

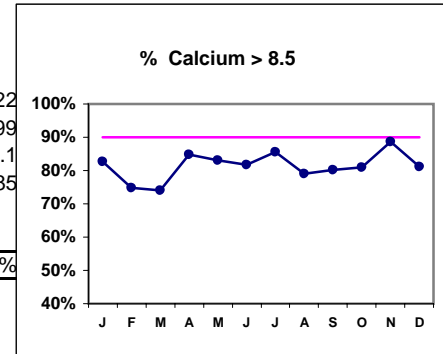
Quality Assurance Reports (Excludes patients in first 3 months of treatment - as of Dec. 31, 2002)

Through period ending Dec. 31, 2002

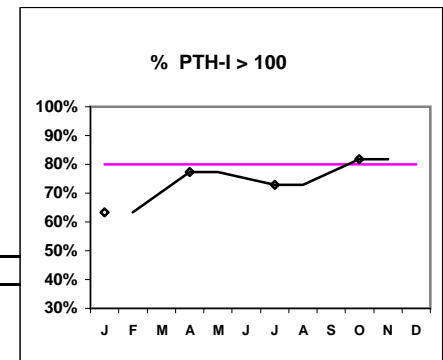
III. OSTEODYSTROPHY - CONT.

J F M A M J J A S O N D

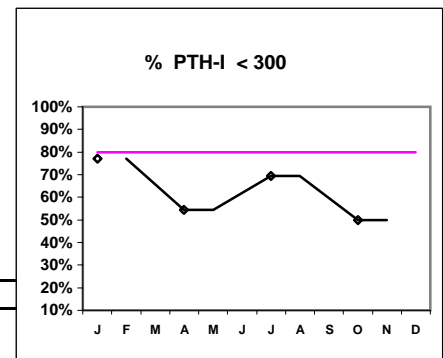
# Calcium	110	111	108	105	112	110	118	115	116	115	115	122
# Calcium > 8.5	91	83	80	89	93	90	101	91	93	93	102	99
Pop. Mean =	9.1	9.1	9.0	9.3	9.2	9.1	9.2	9.1	9.1	9.1	9.4	9.1
Std. Deviation =	0.74	0.78	0.74	0.76	0.71	0.67	0.79	0.69	0.84	0.7	0.66	0.85
Network Mean =												
Natl. Mean =												
% Calcium > 8.5	83%	75%	74%	85%	83%	82%	86%	79%	80%	81%	89%	81%



# PTH-I	109	66	118	22
# PTH-I > 100	69	51	86	18
Pop. Mean =	247	353	302	343
Std. Deviation =	267	326	315	245
Network Mean =				
Natl. Mean =				
% PTH-I > 100	63%	77%	73%	82%



# PTH-I	109	66	118	22
# PTH-I < 300	84	36	82	11
Pop. Mean =	247	353	302	343
Std. Deviation =	267	326	315	245
Network Mean =				
Natl. Mean =				
% PTH-I < 300	77%	55%	69%	50%



*Methodology: a) Monthly values based on patient's monthly average of all values present for the month; b) Quarter values are average of all values for quarter; c) Values not averaged use last value present at months end.

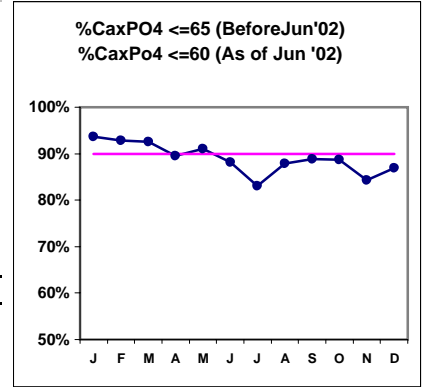
Haviland Kidney Center - SCU

Quality Assurance Reports (Excludes patients in first 3 months of treatment - as of Dec. 31, 2002)

Through period ending Dec. 31, 2002

III. OSTEODYSTROPHY - CONT.

	J	F	M	A	M	J	J	A	S	O	N	D
# Ca x PO4	110	111	108	105	112	110	118	115	116	115	115	122
# Ca x PO4 <= 65	103	103	100	94	102							
# Ca x PO4 <= 60						97	98	101	103	102	97	106
Pop. Mean =	41.7	44.9	44.3	47.0	44.9	44.4	45.5	43.1	44.0	42.7	43.4	44.5
Std. Deviation =	14.1	13.6	14.1	13.8	14.7	14.5	14.9	14.1	15.5	13.6	14.8	14.2
Network Mean =												
Natl. Mean =												
CaxPO4 <= 65or60	94%	93%	93%	90%	91%	88%	83%	88%	89%	89%	84%	87%



*Methodology: a) Monthly values based on patient's monthly average of all values present for the month; b) Quarter values are average of all values for quarter; c) Values not averaged use last value present at months end.

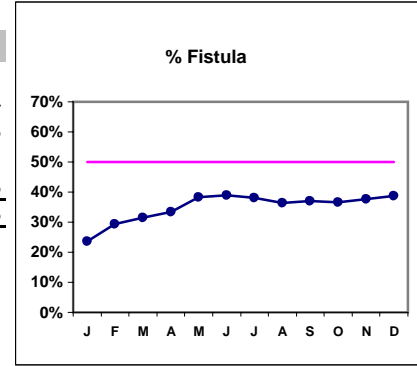
Haviland Kidney Center - SCU

Quality Assurance Reports (Excludes patients in first 3 months of treatment - as of Dec. 31, 2002)

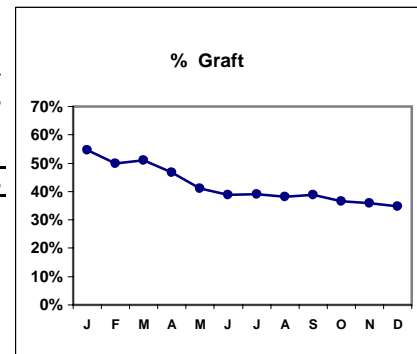
Through period ending Dec. 31, 2002

IV. ACCESS

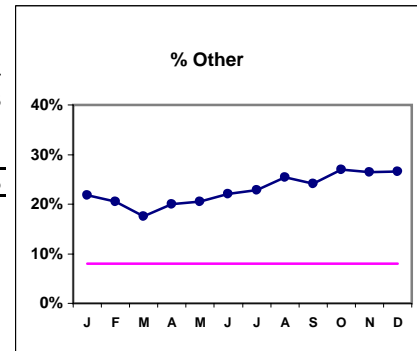
	J	F	M	A	M	J	J	A	S	O	N	D
# Access	110	112	108	105	112	113	118	118	116	115	117	124
# Fistula	26	33	34	35	43	44	45	43	43	42	44	48
Network %												
Natl. % - 2000	30%	30%	30%	30%	30%	30%	30%	30%	30%	30%	30%	30%
% Fistula	24%	29%	31%	33%	38%	39%	38%	36%	37%	37%	38%	39%



# Access	110	112	108	105	112	113	118	118	116	115	117	124
# Graft	60	56	55	49	46	44	46	45	45	42	42	43
Network %												
Natl. %												
% Graft	55%	50%	51%	47%	41%	39%	39%	38%	39%	37%	36%	35%



# Access	110	112	108	105	112	113	118	118	116	115	117	124
# Other	24	23	19	21	23	25	27	30	28	31	31	33
Network %												
Natl. %												
% Other	22%	21%	18%	20%	21%	22%	23%	25%	24%	27%	26%	27%



*Methodology: a) Monthly values based on patient's monthly average of all values present for the month; b) Quarter values are average of all values for quarter; c) Values not averaged use last value present at months end.

Haviland Kidney Center - SCU

Quality Assurance Reports (Excludes patients in first 3 months of treatment - as of Dec. 31, 2002)

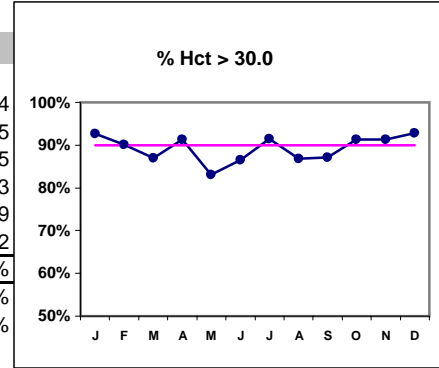
Through period ending Dec. 31, 2002

***Hct. values use Coulter method - as of July 2001**

V. ANEMIA

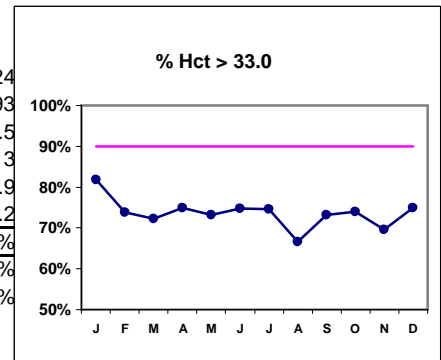
	J	F	M	A	M	J	J	A	S	O	N	D
# Hct	110	111	108	104	112	111	118	114	116	115	115	124
# Hct > 30.0	102	100	94	95	93	96	108	99	101	105	105	115
Pop. Mean =	36.0	35.2	35.0	35.1	35.0	35.3	35.6	34.7	35.4	35.5	35.0	35.5
Std. Deviation =	3.9	4.2	4.3	4.0	4.4	4.4	4.0	4.5	4.3	3.9	4.1	4.13
Network Mean =	33.9	33.9	33.9	33.9	33.9	33.9	33.9	33.9	33.9	33.9	33.9	33.9
Natl. Mean =	34.2	34.2	34.2	34.2	34.2	34.2	34.2	34.2	34.2	34.2	34.2	34.2
% Hct > 30.0	93%	90%	87%	91%	83%	86%	92%	87%	87%	91%	91%	93%
*** Network > 30.0	89%	89%	89%	89%	89%	89%	89%	89%	89%	89%	89%	89%
*** Natl. > 30.0	79%	79%	79%	79%	79%	79%	79%	79%	79%	79%	79%	79%

* Figures for 2000



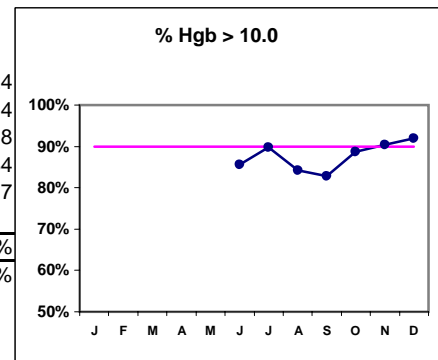
# Hct	110	111	108	104	112	111	118	114	116	115	115	124
# Hct > 33.0	90	82	78	78	82	83	88	76	85	85	80	93
Pop. Mean =	36.0	35.2	35.0	35.1	35.0	35.3	35.6	34.7	35.4	35.5	35.0	35.5
Std. Deviation =	3.9	4.2	4.3	4.0	4.4	4.4	4.0	4.5	4.3	3.9	4.1	4.13
Network Mean =	33.9	33.9	33.9	33.9	33.9	33.9	33.9	33.9	33.9	33.9	33.9	33.9
Natl. Mean =	34.2	34.2	34.2	34.2	34.2	34.2	34.2	34.2	34.2	34.2	34.2	34.2
% Hct > 33.0	82%	74%	72%	75%	73%	75%	75%	67%	73%	74%	70%	75%
*** Network > 33.0	74%	74%	74%	74%	74%	74%	74%	74%	74%	74%	74%	74%
*** Natl. > 33.0	73%	73%	73%	73%	73%	73%	73%	73%	73%	73%	73%	73%

* Figures for 2000



# Hgb						111	118	114	116	115	115	124
# Hgb > 10.0						95	106	96	96	102	104	114
Pop. Mean =						11.5	11.7	11.4	11.6	11.7	11.6	11.8
Std. Deviation =						1.44	1.33	1.47	1.36	1.23	1.29	1.34
*Network Mean =	11.7	11.7	11.7	11.7	11.7	11.7	11.7	11.7	11.7	11.7	11.7	11.7
Natl. Mean =												
% Hgb > 10.0						86%	90%	84%	83%	89%	90%	92%
*** Network >= 10	93%	93%	93%	93%	93%	93%	93%	93%	93%	93%	93%	93%

* Figures for 2000



*Methodology: a) Monthly values based on patient's monthly average of all values present for the month; b) Quarter values are average of all values for quarter; c) Values not averaged use last value present at months end.

Haviland Kidney Center - SCU

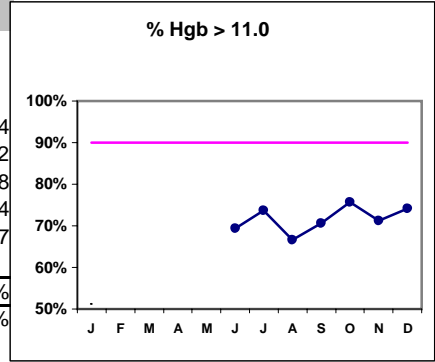
Quality Assurance Reports (Excludes patients in first 3 months of treatment - as of Dec. 31, 2002)

Through period ending Dec. 31, 2002

V. ANEMIA - CONT.

	J	F	M	A	M	J	J	A	S	O	N	D
# Hgb						111	118	114	116	115	115	124
# Hgb > 11.0						77	87	76	82	87	82	92
Pop. Mean =						11.5	11.7	11.4	11.6	11.7	11.6	11.8
Std. Deviation =						1.44	1.33	1.47	1.36	1.23	1.29	1.34
*Network Mean =	11.7	11.7	11.7	11.7	11.7	11.7	11.7	11.7	11.7	11.7	11.7	11.7
Natl. Mean =												
% Hgb > 11.0						69%	74%	67%	71%	76%	71%	74%
*% Network >= 11	76%	76%	76%	76%	76%	76%	76%	76%	76%	76%	76%	76%

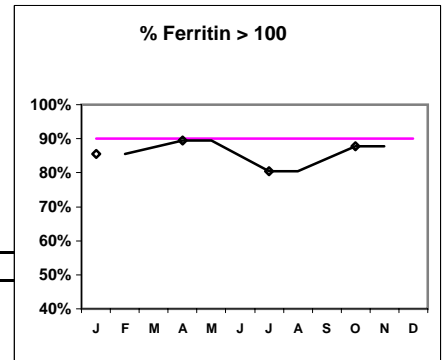
*Figures for 2000



Iron Profile

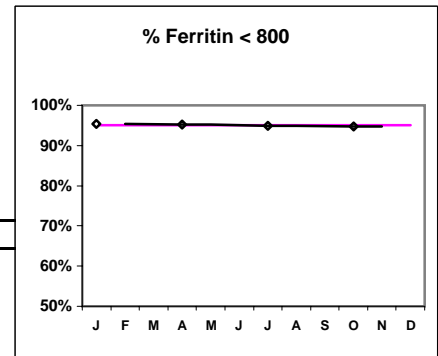
# Ferritin	110	105	118	115
# Ferritin > 100	94	94	95	101
Pop. Mean =	340	341	327	321
Std. Deviation =	241	232	265	236
*Network Mean =	489	489	489	489
Natl. Mean =				
% Ferritin > 100	85%	90%	81%	88%
*% Network > 100	88%	88%	88%	88%

*Figures for 2000



# Ferritin	110	105	118	115
# Ferritin < 800	105	100	112	109
Pop. Mean =	340	341	327	321
Std. Deviation =	241	232	265	236
*Network Mean =	489	489	489	489
Natl. Mean =				
% Ferritin < 800	95%	95%	95%	95%

*Figures for 2000



*Methodology: a) Monthly values based on patient's monthly average of all values present for the month; b) Quarter values are average of all values for quarter; c) Values not averaged use last value present at months end.

Haviland Kidney Center - SCU

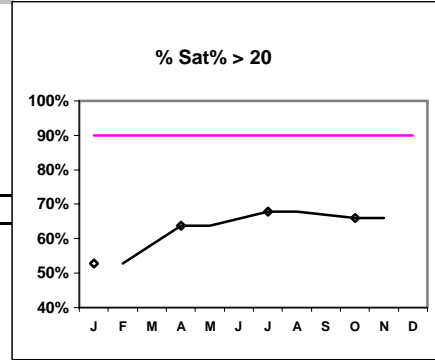
Quality Assurance Reports (Excludes patients in first 3 months of treatment - as of Dec. 31, 2002)

Through period ending Dec. 31, 2002

V. ANEMIA - CONT.

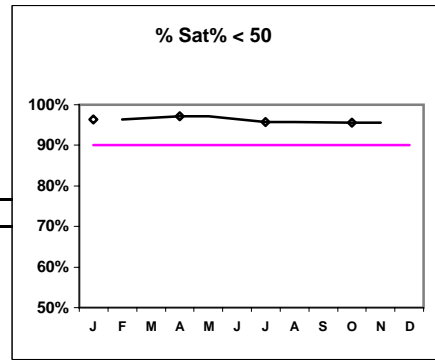
	J	F	M	A	M	J	J	A	S	O	N	D
# % Sat	110			105			118			115		
# % Sat > 20	58			67			80			76		
Pop. Mean =	23.2			25.4			25.8			24.7		
Std. Deviation =	9.28			10.4			11.5			10.6		
*Network Mean =	28			28			28			28		
Natl. Mean =												
% Sat% > 20	53%			64%			68%			66%		
***Network > 20	71%			71%			71%			71%		

*Figures for 2000



# % Sat	110	105	118	115
# % Sat < 50	106	102	113	110
Pop. Mean =	23.2	25.4	25.8	24.7
Std. Deviation =	9.28	10.4	11.5	10.6
*Network Mean =	28	28	28	28
Natl. Mean =				
% Sat% < 50	96%	97%	96%	96%

*Figures for 2000



*Methodology: a) Monthly values based on patient's monthly average of all values present for the month; b) Quarter values are average of all values for quarter; c) Values not averaged use last value present at months end.