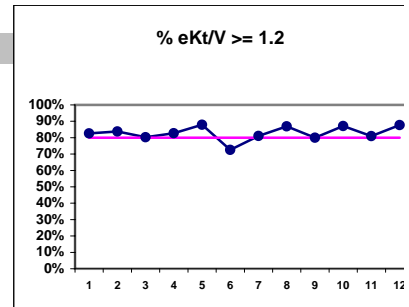


PCU - Haviland Kidney Center - Center Hemodialysis
 Quality Assurance Reports (Excludes patients in first 6 months of treatment)
 Through period ending Dec. 31, 1999

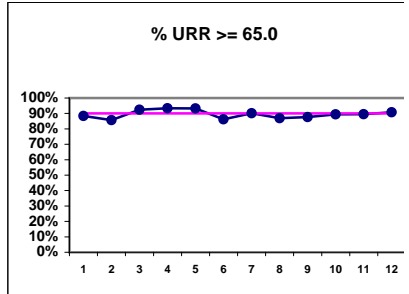
I.j - I.S. Dept.

I. ADEQUACY OF DIALYSIS

	J	F	M	A	M	J	J	A	S	O	N	D
# eKt/V	69	68	66	58	58	62	58	61	65	62	63	65
# eKt/V >= 1.2	57	57	53	48	51	45	47	53	52	54	51	57
Pop. Mean =	1.47	1.51	1.42	1.42	1.55	1.32	1.42	1.54	1.43	1.47	1.41	1.49
Std. Deviation =	0.36	0.55	0.26	0.39	0.44	0.30	0.25	0.44	0.30	0.47	0.25	0.33
Network Mean =												
Natl. Mean =												
% eKt/V >= 1.2	83%	84%	80%	83%	88%	73%	81%	87%	80%	87%	81%	88%

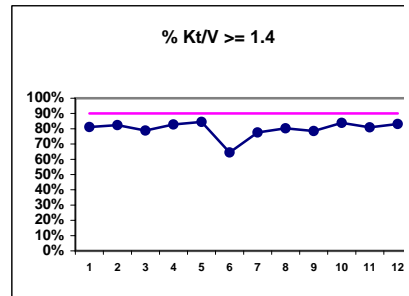


# URR	69	70	66	60	59	65	61	61	65	66	67	65
# URR >= 65.0	61	60	61	56	55	56	55	53	57	59	60	59
Pop. Mean =	73.3	74.6	74.8	75.5	75.9	70.9	75.1	70.3	71.9	75.1	73.4	73.8
Std. Deviation =	11.9	9.36	7.29	9.31	8.31	9.7	8.66	9.84	11.0	7.51	8.09	7.04
Network Mean =	74.0	74.0	74.0	74.0	74.0	74.0	74.0	74.0	74.0	74.0	74.0	74.0
*Natl. Mean =	68.0	68.0	68.0	68.0	68.0	68.0	68.0	68.0	68.0	68.0	68.0	68.0
% URR >= 65.0	88%	86%	92%	93%	93%	86%	90%	87%	88%	89%	90%	91%



* Figures for 1997

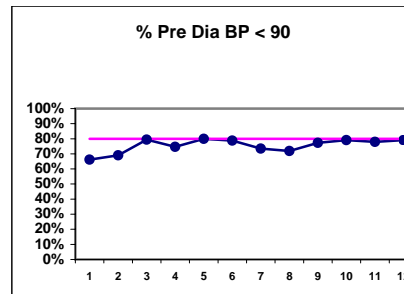
# Kt/V	69	68	66	58	58	62	58	61	65	62	63	65
# Kt/V >= 1.4	56	56	52	48	49	40	45	49	51	52	51	54
Pop. Mean =	1.69	1.73	1.63	1.63	1.78	1.51	1.63	1.77	1.64	1.69	1.63	1.72
Std. Deviation =	0.42	0.73	0.31	0.46	0.51	0.34	0.29	0.52	0.35	0.55	0.29	0.39
Network Mean =												
*Natl. Mean =	1.39	1.39	1.39	1.39	1.39	1.39	1.39	1.39	1.39	1.39	1.39	1.39
% Kt/V >= 1.4	81%	82%	79%	83%	84%	65%	78%	80%	78%	84%	81%	83%
% Kt/V > 1.2	87%	87%	89%	90%	93%	84%	95%	92%	89%	97%	94%	94%
*Network % > 1.2	79%	79%	79%	79%	79%	79%	79%	79%	79%	79%	79%	79%
*Natl. % > 1.2	78%	78%	78%	78%	78%	78%	78%	78%	78%	78%	78%	78%



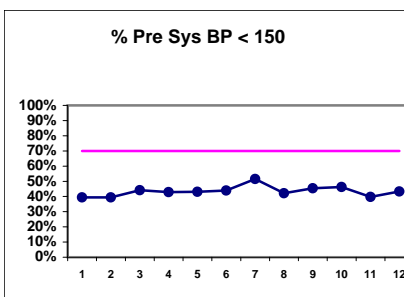
* Figures for 1997

Blood Pressure Control (Pre)

# Pre Dia BP	71	71	68	63	65	66	64	64	66	67	68	67
# Pre Dia BP < 90	47	49	54	47	52	52	47	46	51	53	53	53
Pop. Mean =	82	84	82	81	79	80	80	80	80	78	82	80
Std. Deviation =	11.8	15.6	12.1	13.5	12.1	12.2	13.6	13.3	15.9	12.6	17.9	12.9
Network Mean =												
Natl. Mean =												
% Pre Dia BP < 90	66%	69%	79%	75%	80%	79%	73%	72%	77%	79%	78%	79%



# Pre Sys BP	71	71	68	63	65	66	64	64	66	67	68	67
# Pre Sys BP < 150	28	28	30	27	28	29	33	27	30	31	27	29
Pop. Mean =	151	152	153	152	149	152	151	153	152	152	153	154
Std. Deviation =	24.1	25.3	25.4	25.8	26.7	25.9	26.5	26.3	25.9	26.1	25.9	24.9
Network Mean =												
Natl. Mean =												
% Pre Sys BP < 150	39%	39%	44%	43%	43%	44%	52%	42%	45%	46%	40%	43%



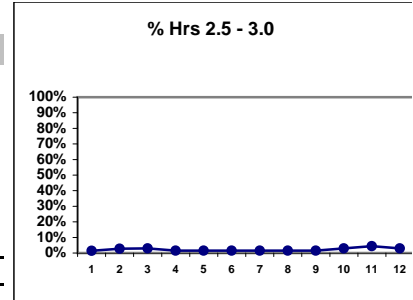
*Methodology: a) Monthly values based on patient's monthly average of all values present for the month; b) Quarter values are average of all values for quarter; c) Values not averaged use last value present at months end.

PCU - Haviland Kidney Center - Center Hemodialysis
 Quality Assurance Reports (Excludes patients in first 6 months of treatment)
 Through period ending Dec. 31, 1999

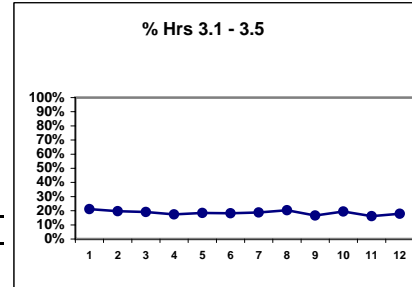
I.j - I.S. Dept.

I. ADEQUACY OF DIALYSIS - CONT.

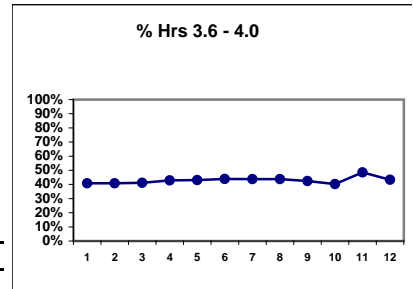
	J	F	M	A	M	J	J	A	S	O	N	D
# Dialysis Hrs	71	71	68	63	65	66	64	64	66	67	68	67
# Hrs. 2.5 - 3.0	1	2	2	1	1	1	1	1	1	2	3	2
Pop. Mean =	4.00	4.00	4.00	4.00	4.00	4.00	4.05	4.09	4.06	4.06	4.00	4.05
Std. Deviation =	0.53	0.55	0.52	0.51	0.47	0.49	0.50	0.46	0.50	0.50	0.50	0.61
Network Mean =												
Natl. Mean =												
% Hrs. 2.5 - 3.0	1%	3%	3%	2%	2%	2%	2%	2%	2%	3%	4%	3%



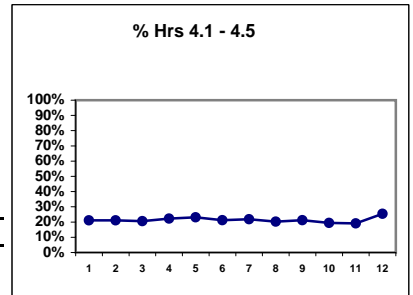
# Dialysis Hrs	71	71	68	63	65	66	64	64	66	67	68	67
# Hrs 3.1 - 3.5	15	14	13	11	12	12	12	13	11	13	11	12
Pop. Mean =	4.00	4.00	4.00	4.00	4.00	4.00	4.05	4.09	4.06	4.06	4.00	4.05
Std. Deviation =	0.53	0.55	0.52	0.51	0.47	0.49	0.50	0.46	0.50	0.50	0.50	0.61
Network Mean =												
Natl. Mean =												
% Hrs 3.1 - 3.5	21%	20%	19%	17%	18%	18%	19%	20%	17%	19%	16%	18%



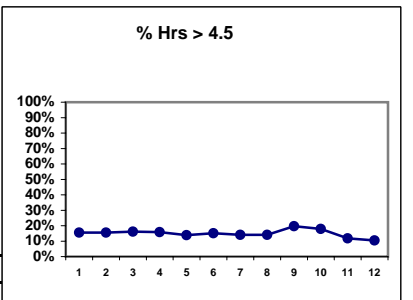
# Dialysis Hrs	71	71	68	63	65	66	64	64	66	67	68	67
# Hrs 3.6 - 4.0	29	29	28	27	28	29	28	28	28	27	33	29
Pop. Mean =	4.00	4.00	4.00	4.00	4.00	4.00	4.05	4.09	4.06	4.06	4.00	4.05
Std. Deviation =	0.53	0.55	0.52	0.51	0.47	0.49	0.50	0.46	0.50	0.50	0.50	0.61
Network Mean =												
Natl. Mean =												
% Hrs 3.6 - 4.0	41%	41%	41%	43%	43%	44%	44%	44%	42%	40%	49%	43%



# Dialysis Hrs	71	71	68	63	65	66	64	64	66	67	68	67
# Hrs 4.1 - 4.5	15	15	14	14	15	14	14	13	14	13	13	17
Pop. Mean =	4.00	4.00	4.00	4.00	4.00	4.00	4.05	4.09	4.06	4.06	4.00	4.05
Std. Deviation =	0.53	0.55	0.52	0.51	0.47	0.49	0.50	0.46	0.50	0.50	0.50	0.61
Network Mean =												
Natl. Mean =												
% Hrs 4.1 - 4.5	21%	21%	21%	22%	23%	21%	22%	20%	21%	19%	19%	25%



# Dialysis Hrs	71	71	68	63	65	66	64	64	66	67	68	67
# Hrs > 4.5	11	11	11	10	9	10	9	9	13	12	8	7
Pop. Mean =	4.00	4.00	4.00	4.00	4.00	4.00	4.05	4.09	4.06	4.06	4.00	4.05
Std. Deviation =	0.53	0.55	0.52	0.51	0.47	0.49	0.50	0.46	0.50	0.50	0.50	0.61
Network Mean =												
Natl. Mean =												
% Hrs > 4.5	15%	15%	16%	16%	14%	15%	14%	14%	20%	18%	12%	10%



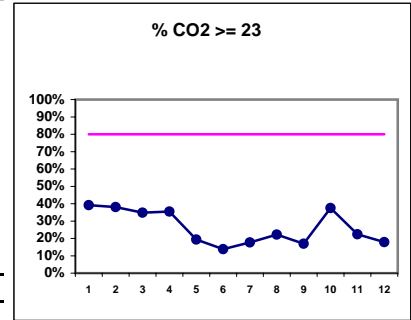
*Methodology: a) Monthly values based on patient's monthly average of all values present for the month; b) Quarter values are average of all values for quarter; c) Values not averaged use last value present at months end.

PCU - Haviland Kidney Center - Center Hemodialysis
Quality Assurance Reports (Excludes patients in first 6 months of treatment)
Through period ending Dec. 31, 1999

I,j - I.S. Dept.

I. ADEQUACY OF DIALYSIS - CONT.

	J	F	M	A	M	J	J	A	S	O	N	D
# CO2	69	71	66	62	62	65	62	63	65	64	67	67
# CO2 >= 23	27	27	23	22	12	9	11	14	11	24	15	12
Pop. Mean =	22	22	21	22	20	20	20	20	20	21	20	20
Std. Deviation =	2.81	2.87	3.63	3.69	4.69	3.66	4.71	4.07	3.72	5.49	3.74	3.03
Network Mean =												
Natl. Mean =												
% CO2 >= 23	39%	38%	35%	35%	19%	14%	18%	22%	17%	38%	22%	18%



(Note: Jan & Feb Albumin values are adjusted by +0.2)

*Albumin values use BCP method)

*Methodology: a) Monthly values based on patient's monthly average of all values present for the month; b) Quarter values are average of all values for quarter; c) Values not averaged use last value present at months end.

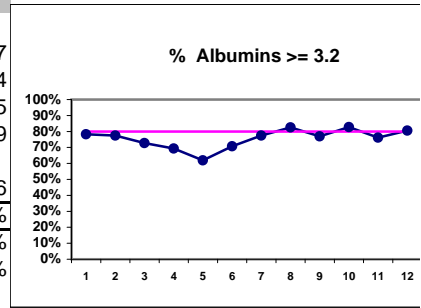
PCU - Haviland Kidney Center - Center Hemodialysis
 Quality Assurance Reports (Excludes patients in first 6 months of treatment)
 Through period ending Dec. 31, 1999

I,j - I.S. Dept.

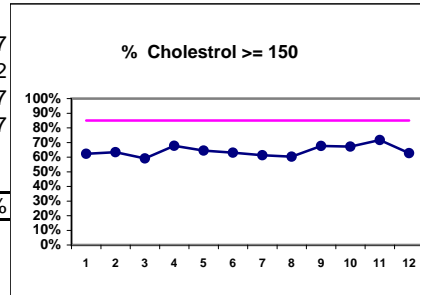
II. NUTRITION

	J	F	M	A	M	J	J	A	S	O	N	D
# Albumin	69	71	66	62	63	65	62	63	65	64	67	67
# Albumin >= 3.2	54	55	48	43	39	46	48	52	50	53	51	54
Pop. Mean =	3.5	3.4	3.4	3.4	3.3	3.4	3.4	3.5	3.4	3.4	3.4	3.5
Std. Deviation =	0.40	0.39	0.47	0.36	0.51	0.39	0.42	0.39	0.39	0.36	0.42	0.39
Network Mean =												
Natl. Mean =	3.6	3.6	3.6	3.6	3.6	3.6	3.6	3.6	3.6	3.6	3.6	3.6
% Albumin >= 3.2	78%	77%	73%	69%	62%	71%	77%	83%	77%	83%	76%	81%
*Network % >= 3.2	76%	76%	76%	76%	76%	76%	76%	76%	76%	76%	76%	76%
*Natl. % >= 3.2	83%	83%	83%	83%	83%	83%	83%	83%	83%	83%	83%	83%

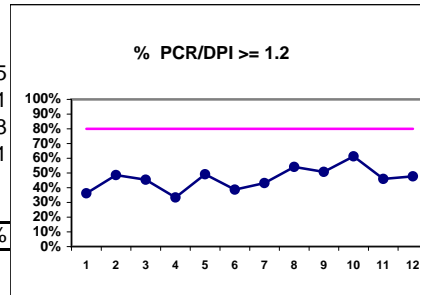
*Figures for 1997



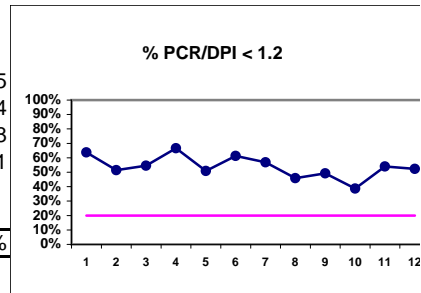
# Cholesterol	69	71	66	62	62	65	62	63	65	64	67	67
# Chol. >= 150	43	45	39	42	40	41	38	38	44	43	48	42
Pop. Mean =	167	171	162	168	160	160	158	161	164	157	163	157
Std. Deviation =	60.7	56.8	56.2	50.8	53.5	44.2	49.1	44.5	46.7	51.5	41.9	36.7
Network Mean =												
Natl. Mean =												
% Chol. >= 150	62%	63%	59%	68%	65%	63%	61%	60%	68%	67%	72%	63%



# PCR/DPI	69	70	66	60	59	62	58	61	65	62	63	65
# PCR/DPI >= 1.2	25	34	30	20	29	24	25	33	33	38	29	31
Pop. Mean =	1.02	1.09	1.08	1.03	1.13	1.02	1.10	1.21	1.16	1.20	1.15	1.18
Std. Deviation =	0.28	0.24	0.29	0.33	0.30	0.31	0.31	0.35	0.33	0.35	0.31	0.31
Network Mean =												
Natl. Mean =												
% PCR/DPI >= 1.2	36%	49%	45%	33%	49%	39%	43%	54%	51%	61%	46%	48%



# PCR/DPI	69	70	66	60	59	62	58	61	65	62	63	65
# PCR/DPI < 1.2	44	36	36	40	30	38	33	28	32	24	34	34
Pop. Mean =	1.02	1.09	1.08	1.03	1.13	1.02	1.10	1.21	1.16	1.20	1.15	1.18
Std. Deviation =	0.28	0.24	0.29	0.33	0.30	0.31	0.31	0.35	0.33	0.35	0.31	0.31
Network Mean =												
Natl. Mean =												
% PCR/DPI < 1.2	64%	51%	55%	67%	51%	61%	57%	46%	49%	39%	54%	52%



III. OSTEODYSTROPHY

% Calcium < 11.0

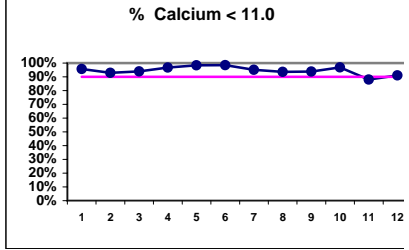
*Methodology: a) Monthly values based on patient's monthly average of all values present for the month; b) Quarter values are average of all values for quarter; c) Values not averaged use last value present at months end.

PCU - Haviland Kidney Center - Center Hemodialysis
Quality Assurance Reports (Excludes patients in first 6 months of treatment)

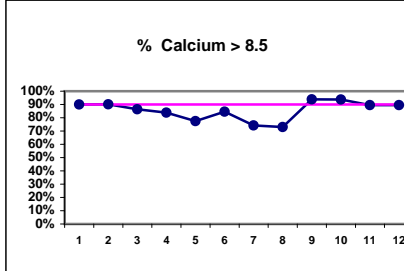
I.j - I.S. Dept.

Through period ending Dec. 31, 1999

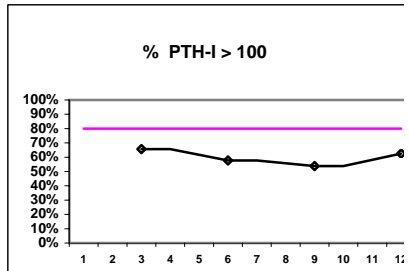
	J	F	M	A	M	J	J	A	S	O	N	D
# Calcium	70	71	66	62	62	65	62	63	65	64	67	67
# Calcium < 11.0	67	66	62	60	61	64	59	59	61	62	59	61
Pop. Mean =	9.4	9.7	9.5	9.1	8.9	9.4	9.1	9.1	9.6	9.5	9.7	9.4
Std. Deviation =	0.81	0.82	0.89	0.76	0.76	0.83	0.91	1.07	0.93	0.68	0.91	0.86
Network Mean =												
Natl. Mean =												
% Calcium < 11.0	96%	93%	94%	97%	98%	98%	95%	94%	94%	97%	88%	91%



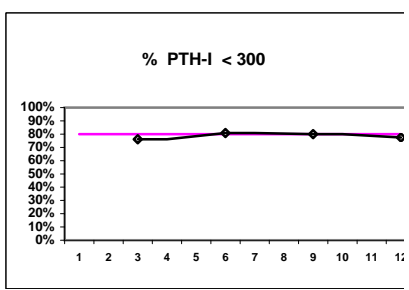
# Calcium	70	71	66	62	62	65	62	63	65	64	67	67
# Calcium > 8.5	63	64	57	52	48	55	46	46	61	60	60	60
Pop. Mean =	9.4	9.7	9.5	9.1	8.9	9.4	9.1	9.1	9.6	9.5	9.7	9.4
Std. Deviation =	0.81	0.82	0.89	0.76	0.76	0.83	0.91	1.07	0.93	0.68	0.91	0.86
Network Mean =												
Natl. Mean =												
% Calcium > 8.5	90%	90%	86%	84%	77%	85%	74%	73%	94%	94%	90%	90%



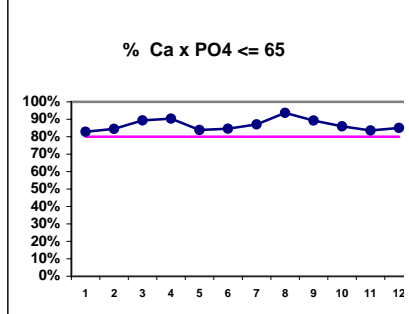
# PTH-I			67			52			65			40
# PTH-I > 100			44			30			35			25
Pop. Mean =			234			159			206			135
Std. Deviation =			271			213			269			218
Network Mean =												
Natl. Mean =												
% PTH-I > 100			66%			58%			54%			63%



# PTH-I			67			52			65			40
# PTH-I < 300			51			42			52			31
Pop. Mean =			234			159			206			135
Std. Deviation =			271			213			269			218
Network Mean =												
Natl. Mean =												
% PTH-I < 300			76%			81%			80%			78%

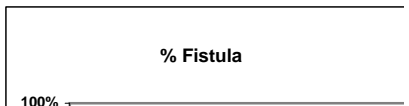


# Ca x PO4	70	71	66	62	62	65	62	63	65	64	67	67
# Ca x PO4 <= 65	58	60	59	56	52	55	54	59	58	55	56	57
Pop. Mean =	50.8	52.7	52.7	48.4	45.1	47.5	45.7	42.5	46.2	46.9	49.9	46.5
Std. Deviation =	15.3	13.6	15.7	13.7	15.7	15.5	16.4	15.1	15.5	13.3	19.1	16.7
Network Mean =												
Natl. Mean =												
% Ca x PO4 <= 65	83%	85%	89%	90%	84%	85%	87%	94%	89%	86%	84%	85%



IV. ACCESS

J F M A M J J A S O N D



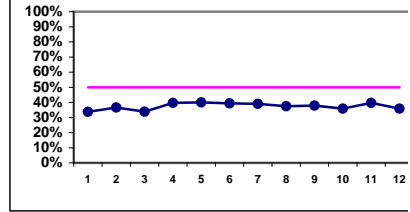
*Methodology: a) Monthly values based on patient's monthly average of all values present for the month; b) Quarter values are average of all values for quarter; c) Values not averaged use last value present at months end.

PCU - Haviland Kidney Center - Center Hemodialysis
Quality Assurance Reports (Excludes patients in first 6 months of treatment)

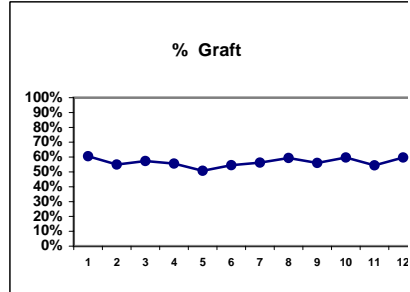
I,j - I.S. Dept.

Through period ending Dec. 31, 1999

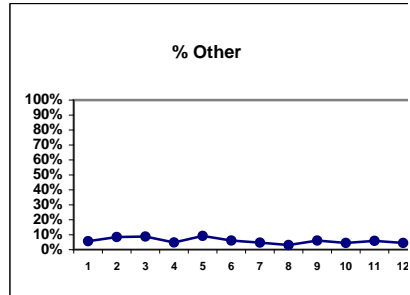
# Access	71	71	68	63	65	66	64	64	66	67	68	67
# Fistula	24	26	23	25	26	26	25	24	25	24	27	24
Network %												
Natl. %												
% Fistula	34%	37%	34%	40%	40%	39%	39%	38%	38%	36%	40%	36%



# Access	71	71	68	63	65	66	64	64	66	67	68	67
# Graft	43	39	39	35	33	36	36	38	37	40	37	40
Network %												
Natl. %												
% Graft	61%	55%	57%	56%	51%	55%	56%	59%	56%	60%	54%	60%

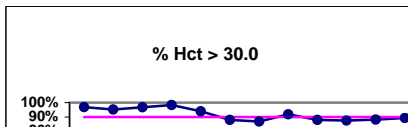


# Access	71	71	68	63	65	66	64	64	66	67	68	67
# Other	4	6	6	3	6	4	3	2	4	3	4	3
Network %												
Natl. %												
% Other	6%	8%	9%	5%	9%	6%	5%	3%	6%	4%	6%	4%



V. ANEMIA

	J	F	M	A	M	J	J	A	S	O	N	D
# Hct	65	62	62	60	50	58	61	61	58	56	59	56
# Hct > 30.0	63	59	60	59	47	51	53	56	51	49	52	50



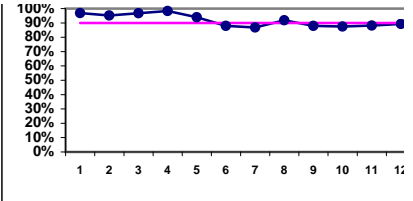
*Methodology: a) Monthly values based on patient's monthly average of all values present for the month; b) Quarter values are average of all values for quarter; c) Values not averaged use last value present at months end.

PCU - Haviland Kidney Center - Center Hemodialysis
Quality Assurance Reports (Excludes patients in first 6 months of treatment)

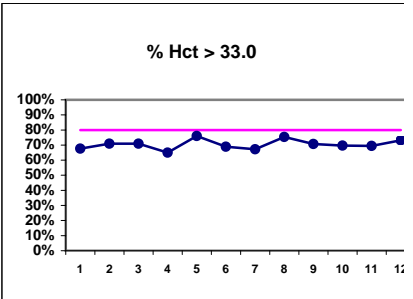
I.j - I.S. Dept.

Through period ending Dec. 31, 1999

Pop. Mean =	35.4	35.2	35.7	36.4	36.1	35.6	35.4	35.7	34.9	35.2	35.5	35.7
Std. Deviation =	3.84	4.32	4.55	4.71	4.03	4.92	4.76	4.15	4.10	4.25	5.07	4.52
Network Mean =												
*Natl. Mean =	33.2	33.2	33.2	33.2	33.2	33.2	33.2	33.2	33.2	33.2	33.2	33.2
% Hct > 30.0	97%	95%	97%	98%	94%	88%	87%	92%	88%	88%	88%	89%
*% Network > 30.0	85%	85%	85%	85%	85%	85%	85%	85%	85%	85%	85%	85%
*% Natl. > 30.0	79%	79%	79%	79%	79%	79%	79%	79%	79%	79%	79%	79%

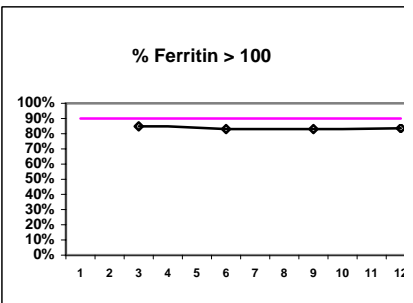


# Hct	65	62	62	60	50	58	61	61	58	56	59	56
# Hct > 33.0	44	44	44	39	38	40	41	46	41	39	41	41
Pop. Mean =	35.4	35.2	35.7	36.4	36.1	35.6	35.4	35.7	34.9	35.2	35.5	35.7
Std. Deviation =	3.84	4.32	4.55	4.71	4.03	4.92	4.76	4.15	4.10	4.25	5.07	4.52
Network Mean =												
*Natl. Mean =	33.2	33.2	33.2	33.2	33.2	33.2	33.2	33.2	33.2	33.2	33.2	33.2
% Hct > 33.0	68%	71%	71%	65%	76%	69%	67%	75%	71%	70%	69%	73%
*% Network > 33.0	64%	64%	64%	64%	64%	64%	64%	64%	64%	64%	64%	64%
*% Natl. > 33.0	56%	56%	56%	56%	56%	56%	56%	56%	56%	56%	56%	56%

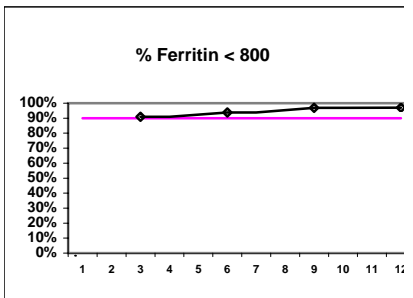


Iron Profile

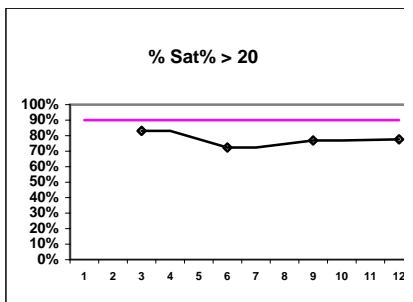
# Ferritin		66		65		65		67
# Ferritin > 100		56		54		54		56
Pop. Mean =		415		379		380		375
Std. Deviation =		296		274		244		253
Network Mean =								
Natl. Mean =								
% Ferritin > 100		85%		83%		83%		84%



# Ferritin		66		65		65		67
# Ferritin < 800		60		61		63		65
Pop. Mean =		415		379		380		375
Std. Deviation =		296		274		244		253
Network Mean =								
Natl. Mean =								
% Ferritin < 800		91%		94%		97%		97%

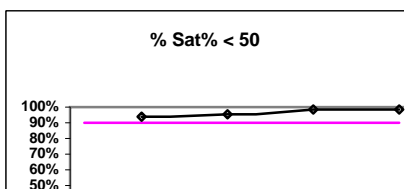


# % Sat		65		65		65		67
# % Sat > 20		54		47		50		52
Pop. Mean =		29.7		27.9		27.0		27.0
Std. Deviation =		12.2		11.6		9.6		9.0
Network Mean =								
Natl. Mean =								
% Sat% > 20		83%		72%		77%		78%



V. ANEMIA - CONT.

	J	F	M	A	M	J	J	A	S	O	N	D
# % Sat			65			65			65			67
# % Sat < 50			61			62			64			66
Pop. Mean =			29.7			27.9			27.0			27.0



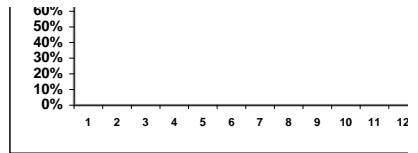
*Methodology: a) Monthly values based on patient's monthly average of all values present for the month; b) Quarter values are average of all values for quarter; c) Values not averaged use last value present at months end.

PCU - Haviland Kidney Center - Center Hemodialysis
Quality Assurance Reports (Excludes patients in first 6 months of treatment)

I,j - I.S. Dept.

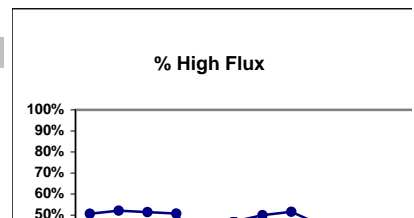
Through period ending Dec. 31, 1999

Std. Deviation =	12.2	11.6	9.6	9.0
Network Mean =				
Natl. Mean =				
% Sat% < 50	94%	95%	98%	99%



VI. OTHERS

	J	F	M	A	M	J	J	A	S	O	N	D
Dialyzer ratios												
# Dialyzers	71	71	68	63	65	66	64	64	66	67	68	67
# High Flux	36	37	35	32	20	31	32	33	30	31	22	28



*Methodology: a) Monthly values based on patient's monthly average of all values present for the month; b) Quarter values are average of all values for quarter; c) Values not averaged use last value present at months end.

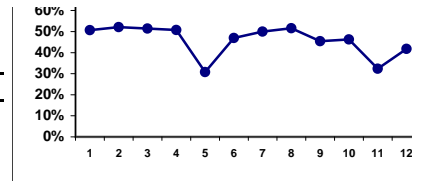
PCU - Haviland Kidney Center - Center Hemodialysis
Quality Assurance Reports (Excludes patients in first 6 months of treatment)
Through period ending Dec. 31, 1999

I,j - I.S. Dept.

Network %

Natl. %

% High Flux	51%	52%	51%	51%	31%	47%	50%	52%	45%	46%	32%	42%
--------------------	-----	-----	-----	-----	-----	-----	-----	-----	-----	-----	-----	-----



Dialyzers

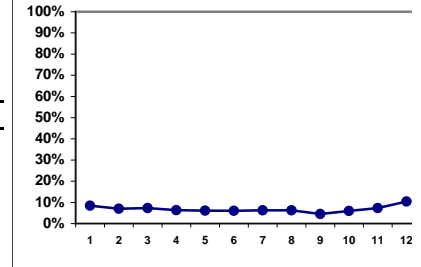
High Efficiency

Network %

Natl. %

# Dialyzers	71	71	68	63	65	66	64	64	66	67	68	67
# High Efficiency	6	5	5	4	4	4	4	4	3	4	5	7
% High Efficiency	8%	7%	7%	6%	6%	6%	6%	6%	5%	6%	7%	10%

% High Efficiency



Dialyzers

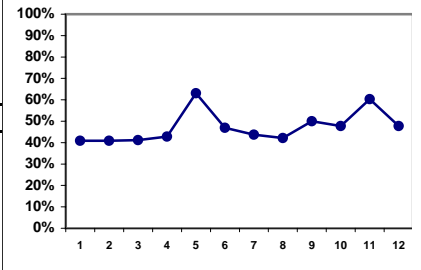
Standard

Network %

Natl. %

# Dialyzers	71	71	68	63	65	66	64	64	66	67	68	67
# Standard	29	29	28	27	41	31	28	27	33	32	41	32
% Standard	41%	41%	41%	43%	63%	47%	44%	42%	50%	48%	60%	48%

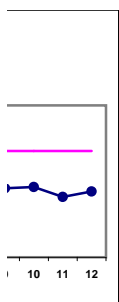
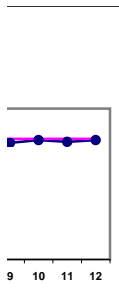
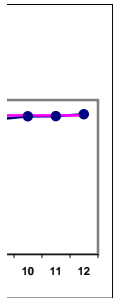
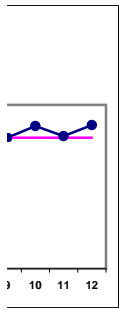
% Standard



*Methodology: a) Monthly values based on patient's monthly average of all values present for the month; b) Quarter values are average of all values for quarter; c) Values not averaged use last value present at months end.

PCU - Haviland Kidney Center - Center Hemodialysis
Quality Assurance Reports (Excludes patients in first 6 months of treatment)
Through period ending Dec. 31, 1999

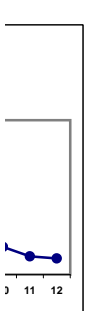
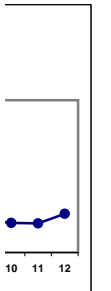
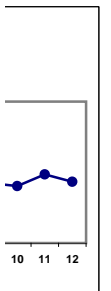
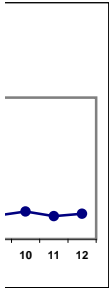
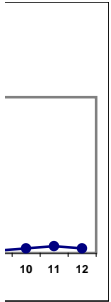
I,j - I.S. Dept.



***Methodology:** a) Monthly values based on patient's monthly average of all values present for the month; b) Quarter values are average of all values for quarter; c) Values not averaged use last value present at months end.

PCU - Haviland Kidney Center - Center Hemodialysis
Quality Assurance Reports (Excludes patients in first 6 months of treatment)
Through period ending Dec. 31, 1999

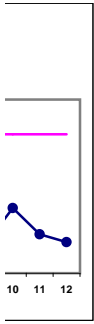
I,j - I.S. Dept.



*Methodology: a) Monthly values based on patient's monthly average of all values present for the month; b) Quarter values are average of all values for quarter; c) Values not averaged use last value present at months end.

PCU - Haviland Kidney Center - Center Hemodialysis
Quality Assurance Reports (Excludes patients in first 6 months of treatment)
Through period ending Dec. 31, 1999

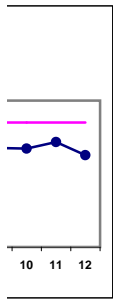
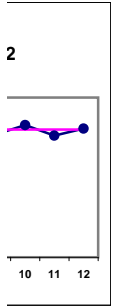
I,j - I.S. Dept.



*Methodology: a) Monthly values based on patient's monthly average of all values present for the month; b) Quarter values are average of all values for quarter; c) Values not averaged use last value present at months end.

PCU - Haviland Kidney Center - Center Hemodialysis
Quality Assurance Reports (Excludes patients in first 6 months of treatment)
Through period ending Dec. 31, 1999

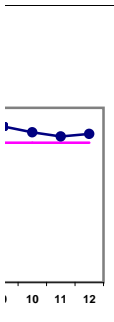
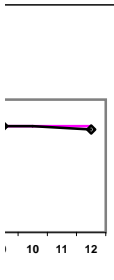
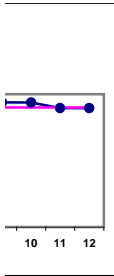
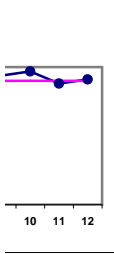
I,j - I.S. Dept.



*Methodology: a) Monthly values based on patient's monthly average of all values present for the month; b) Quarter values are average of all values for quarter; c) Values not averaged use last value present at months end.

PCU - Haviland Kidney Center - Center Hemodialysis
Quality Assurance Reports (Excludes patients in first 6 months of treatment)
Through period ending Dec. 31, 1999

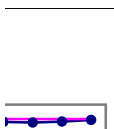
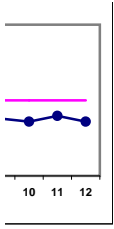
I,j - I.S. Dept.



*Methodology: a) Monthly values based on patient's monthly average of all values present for the month; b) Quarter values are average of all values for quarter; c) Values not averaged use last value present at months end.

PCU - Haviland Kidney Center - Center Hemodialysis
Quality Assurance Reports (Excludes patients in first 6 months of treatment)
Through period ending Dec. 31, 1999

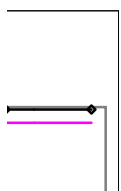
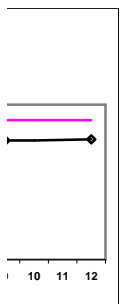
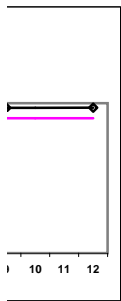
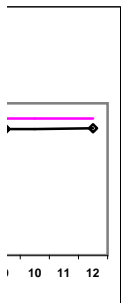
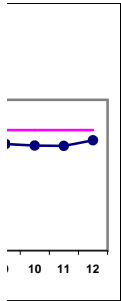
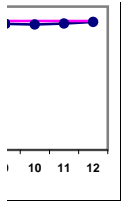
I,j - I.S. Dept.



*Methodology: a) Monthly values based on patient's monthly average of all values present for the month; b) Quarter values are average of all values for quarter; c) Values not averaged use last value present at months end.

PCU - Haviland Kidney Center - Center Hemodialysis
Quality Assurance Reports (Excludes patients in first 6 months of treatment)
Through period ending Dec. 31, 1999

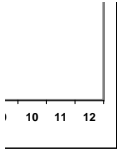
I,j - I.S. Dept.



*Methodology: a) Monthly values based on patient's monthly average of all values present for the month; b) Quarter values are average of all values for quarter; c) Values not averaged use last value present at months end.

PCU - Haviland Kidney Center - Center Hemodialysis
Quality Assurance Reports (Excludes patients in first 6 months of treatment)
Through period ending Dec. 31, 1999

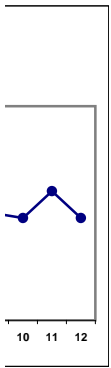
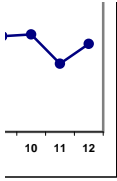
I,j - I.S. Dept.



***Methodology:** a) Monthly values based on patient's monthly average of all values present for the month; b) Quarter values are average of all values for quarter; c) Values not averaged use last value present at months end.

PCU - Haviland Kidney Center - Center Hemodialysis
Quality Assurance Reports (Excludes patients in first 6 months of treatment)
Through period ending Dec. 31, 1999

I,j - I.S. Dept.



*Methodology: a) Monthly values based on patient's monthly average of all values present for the month; b) Quarter values are average of all values for quarter; c) Values not averaged use last value present at months end.