

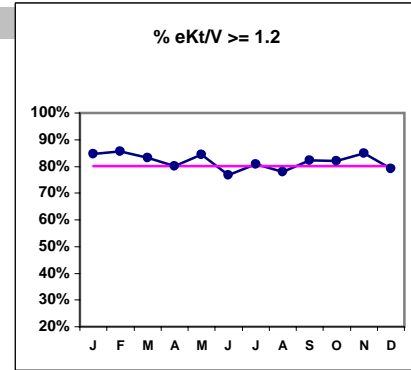
Haviland Kidney Center - PCU

Quality Assurance Reports (Excludes patients in first 3 months of treatment - as of Dec. 31, 2002)

Through period ending Dec. 31, 2002

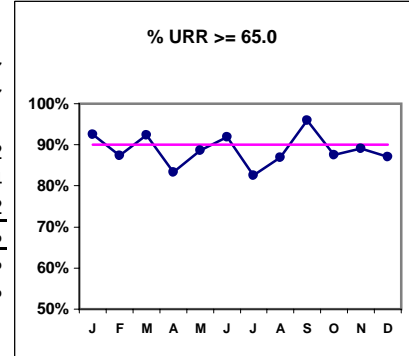
I. ADEQUACY OF DIALYSIS

	J	F	M	A	M	J	J	A	S	O	N	D
# eKt/V	65	70	66	65	71	73	68	68	73	72	73	77
# eKt/V >= 1.2	55	60	55	52	60	56	55	53	60	59	62	61
Pop. Mean =	1.43	1.38	1.43	1.39	1.39	1.37	1.39	1.39	1.39	1.38	1.41	1.43
Std. Deviation =	0.25	0.26	0.29	0.26	0.3	0.24	0.35	0.27	0.24	0.25	0.3	0.47
Network Mean =												
Natl. Mean =												
% eKt/V >= 1.2	85%	86%	83%	80%	85%	77%	81%	78%	82%	82%	85%	79%

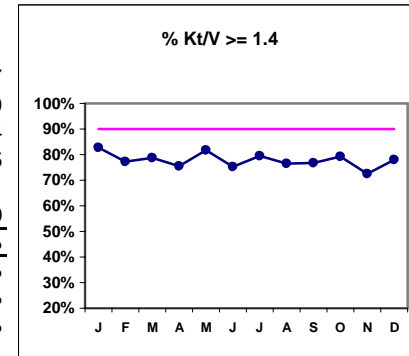


# URR	67	71	66	66	70	74	69	69	73	72	73	77
# URR >= 65.0	62	62	61	55	62	68	57	60	70	63	65	67
Pop. Mean =	74.1	72.8	73.6	73.0	73.3	72.6	71.6	72.5	73.1	72.8	73.3	73.1
Std. Deviation =	6.6	7.4	7.2	7.9	6.5	6.5	11.9	7.0	5.8	6.5	7.7	7.82
*Network Mean =	72.4	72.4	72.4	72.4	72.4	72.4	72.4	72.4	72.4	72.4	72.4	72.4
Natl. Mean =	68.2	68.2	68.2	68.2	68.2	68.2	68.2	68.2	68.2	68.2	68.2	68.2
% URR >= 65.0	93%	87%	92%	83%	89%	92%	83%	87%	96%	88%	89%	87%
*Network % > 65.0	87%	87%	87%	87%	87%	87%	87%	87%	87%	87%	87%	87%
*Natl. % > 65.0	82%	82%	82%	82%	82%	82%	82%	82%	82%	82%	82%	82%

* Figures for 2000



# Kt/V	64	70	66	65	71	73	68	68	73	72	73	77
# Kt/V >= 1.4	53	54	52	49	58	55	54	52	56	57	53	60
Pop. Mean =	1.64	1.58	1.64	1.58	1.59	1.57	1.59	1.58	1.59	1.58	1.62	1.64
Std. Deviation =	0.3	0.31	0.34	0.31	0.35	0.29	0.41	0.32	0.28	0.29	0.36	0.55
Network Mean =	1.61	1.61	1.61	1.61	1.61	1.61	1.61	1.61	1.61	1.61	1.61	1.61
Natl. Mean 1999 =	1.40	1.40	1.40	1.40	1.40	1.40	1.40	1.40	1.40	1.40	1.40	1.40
% Kt/V >= 1.4	83%	77%	79%	75%	82%	75%	79%	76%	77%	79%	73%	78%
% Kt/V > 1.2	94%	87%	94%	88%	89%	92%	87%	90%	97%	93%	90%	94%
Network > 1.2 '00	93%	93%	93%	93%	93%	93%	93%	93%	93%	93%	93%	93%
Natl. % > 1.2 - 2001	91%	91%	91%	91%	91%	91%	91%	91%	91%	91%	91%	91%



*Methodology: a) Monthly values based on patient's monthly average of all values present for the month; b) Quarter values are average of all values for quarter; c) Values not averaged use last value present at months end.

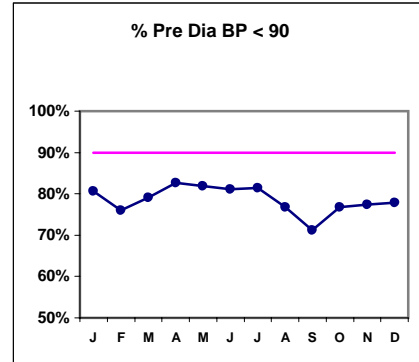
Haviland Kidney Center - PCU

Quality Assurance Reports (Excludes patients in first 3 months of treatment - as of Dec. 31, 2002)

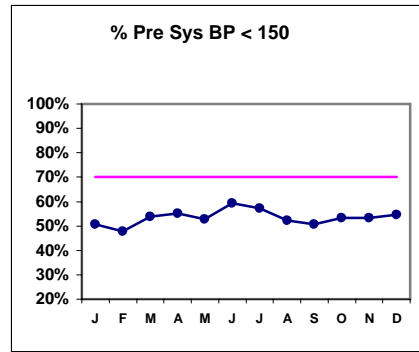
Through period ending Dec. 31, 2002

I. ADEQUACY OF DIALYSIS - CONT.

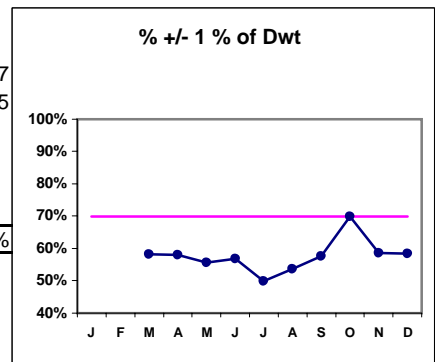
	J	F	M	A	M	J	J	A	S	O	N	D
Blood Pressure Control (Pre)												
# Pre Dia BP	67	71	67	69	72	74	70	69	73	73	75	77
# Pre Dia BP < 90	54	54	53	57	59	60	57	53	52	56	58	60
Pop. Mean =	80.5	82.1	82.7	79.4	80.5	79.9	80.4	82.3	82.2	81.6	81.7	81
Std. Deviation =	12.1	11.0	15.2	10.9	12.1	13.8	12.4	13.7	11.8	13.0	11.0	11.2
Network Mean =												
Natl. Mean =												
% Pre Dia BP < 90	81%	76%	79%	83%	82%	81%	81%	77%	71%	77%	77%	78%



# Pre Sys BP	67	71	67	69	72	74	70	69	73	73	75	77
# Pre Sys BP < 150	34	34	36	38	38	44	40	36	37	39	40	42
Pop. Mean =	150	152	150	149	147	146	147	149	151	151	150	149
Std. Deviation =	17.8	21.2	18.7	19.3	19.2	20.1	18.5	18.7	19.2	18.3	18.5	19.1
Network Mean =												
Natl. Mean =												
%Pre Sys BP <150	51%	48%	54%	55%	53%	59%	57%	52%	51%	53%	53%	55%



# Post/Dwt		67	69	72	74	70	69	73	73	75	77
# +/- 1% Dwt		39	40	40	42	35	37	42	51	44	45
% +/- 1% of Dwt		58%	58%	56%	57%	50%	54%	58%	70%	59%	58%



*Methodology: a) Monthly values based on patient's monthly average of all values present for the month; b) Quarter values are average of all values for quarter; c) Values not averaged use last value present at months end.

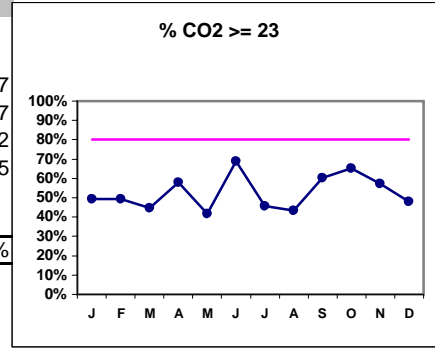
Haviland Kidney Center - PCU

Quality Assurance Reports (Excludes patients in first 3 months of treatment - as of Dec. 31, 2002)

Through period ending Dec. 31, 2002

I. ADEQUACY OF DIALYSIS - CONT.

	J	F	M	A	M	J	J	A	S	O	N	D
# CO2	67	71	67	69	72	74	70	69	73	72	75	77
# CO2 >= 23	33	35	30	40	30	51	32	30	44	47	43	37
Pop. Mean =	22.1	22.5	22.4	22.6	21.8	23.4	22.1	22	23	22.8	22.8	22
Std. Deviation =	2.89	2.36	2.25	2.63	2.43	2.5	3.37	2.35	3.03	3.41	2.17	2.15
Network Mean =												
Natl. Mean =												
% CO2 >= 23	49%	49%	45%	58%	42%	69%	46%	43%	60%	65%	57%	48%



*Methodology: a) Monthly values based on patient's monthly average of all values present for the month; b) Quarter values are average of all values for quarter; c) Values not averaged use last value present at months end.

Haviland Kidney Center - PCU

Quality Assurance Reports (Excludes patients in first 3 months of treatment - as of Dec. 31, 2002)

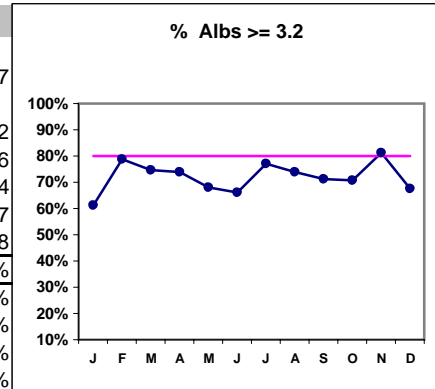
Through period ending Dec. 31, 2002

*Albumin values use BCG method - as of July 2001

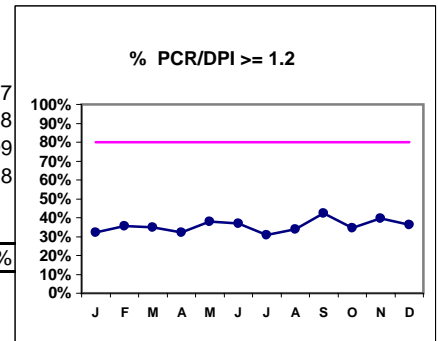
II. NUTRITION

	J	F	M	A	M	J	J	A	S	O	N	D
# Albumin	67	71	67	69	72	74	70	69	73	72	75	77
# Albumin >= 3.5	41	56	50	51	49	49	54	51	52	51	61	52
Pop. Mean =	3.57	3.66	3.62	3.66	3.56	3.58	3.66	3.6	3.65	3.61	3.68	3.6
Std. Deviation =	0.32	0.37	0.28	0.28	0.31	0.32	0.32	0.31	0.35	0.36	0.31	0.34
Network Mean =	3.7	3.7	3.7	3.7	3.7	3.7	3.7	3.7	3.7	3.7	3.7	3.7
Natl. Mean =	3.8	3.8	3.8	3.8	3.8	3.8	3.8	3.8	3.8	3.8	3.8	3.8
% Alb >= 3.5	61%	79%	75%	74%	68%	66%	77%	74%	71%	71%	81%	68%
PCU % >= 3.7	37%	51%	40%	49%	33%	41%	53%	39%	56%	43%	53%	38%
PCU % >= 4.0	12%	18%	10%	13%	10%	14%	19%	13%	18%	15%	19%	9%
*Natl % >= 3.5-BCG	80%	80%	80%	80%	80%	80%	80%	80%	80%	80%	80%	80%
*Natl. % >= 4.0-BCG	29%	29%	29%	29%	29%	29%	29%	29%	29%	29%	29%	29%
*Netwk%>=3.5 BCG	79%	79%	79%	79%	79%	79%	79%	79%	79%	79%	79%	79%
*Netwk%>=4.0 BCG	29%	29%	29%	29%	29%	29%	29%	29%	29%	29%	29%	29%

*Figures for 2000



	J	F	M	A	M	J	J	A	S	O	N	D
# PCR/DPI	65	70	66	65	71	73	68	68	73	72	73	77
# PCR/DPI >= 1.2	21	25	23	21	27	27	21	23	31	25	29	28
Pop. Mean =	1.04	1.10	1.07	1.06	1.09	1.08	1.11	1.07	1.11	1.08	1.11	1.09
Std. Deviation =	0.30	0.25	0.31	0.27	0.31	0.26	0.36	0.30	0.28	0.26	0.28	0.28
Network Mean =												
Natl. Mean =												
% PCR/DPI >= 1.2	32%	36%	35%	32%	38%	37%	31%	34%	42%	35%	40%	36%



*Methodology: a) Monthly values based on patient's monthly average of all values present for the month; b) Quarter values are average of all values for quarter; c) Values not averaged use last value present at months end.

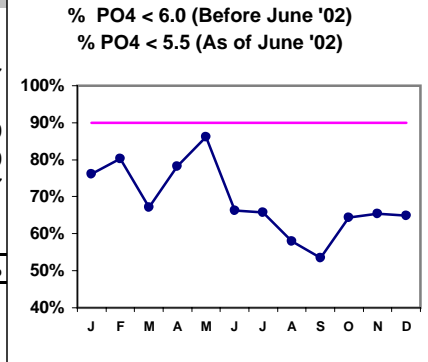
Haviland Kidney Center - PCU

Quality Assurance Reports (Excludes patients in first 3 months of treatment - as of Dec. 31, 2002)

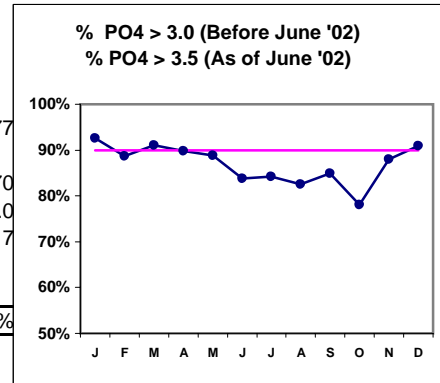
Through period ending Dec. 31, 2002

III. OSTEODYSTROPHY

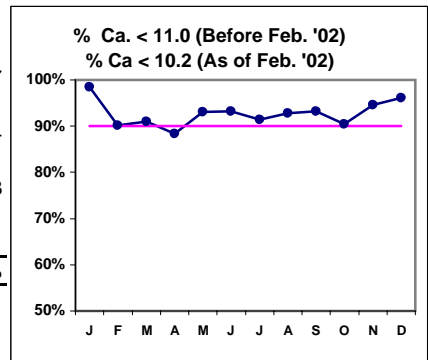
	J	F	M	A	M	J	J	A	S	O	N	D
# PO4	67	71	67	69	72	74	70	69	73	73	75	77
# PO4 < 6.0	51	57	45	54	62							
# PO4 < 5.5						49	46	40	39	47	49	50
Pop. Mean =	5.0	4.8	5.0	4.9	5.0	5.1	4.9	5.0	5.1	4.9	5.0	5.0
Std. Deviation	1.53	1.25	1.55	1.41	1.53	1.38	1.31	1.41	1.26	1.44	1.29	1.17
Network Mean =												
Natl. Mean =												
% PO4 < 6.0 or 5.5	76%	80%	67%	78%	86%	66%	66%	58%	53%	64%	65%	65%



# PO4	67	71	67	69	72	74	70	69	73	73	75	77
# PO4 > 3.0	62	63	61	62	64							
# PO4 > 3.5						62	59	57	62	57	66	70
Pop. Mean =	5.0	4.8	5.0	4.9	5.0	5.1	4.9	5.0	5.1	4.9	5.0	5.0
Std. Deviation	1.53	1.25	1.55	1.41	1.53	1.38	1.31	1.41	1.26	1.44	1.29	1.17
Network Mean =												
Natl. Mean =												
% PO4 > 3.0 or 3.5	93%	89%	91%	90%	89%	84%	84%	83%	85%	78%	88%	91%



# Calcium	67	71	67	69	72	74	70	69	73	73	75	77
# Calcium < 11.0	66											
# Calcium < 10.2		64	61	61	67	69	64	64	68	66	71	74
Pop. Mean =	9.2	9.1	9.1	9.2	9.2	9.1	9.2	9.0	9.1	9.2	9.2	9.1
Std. Deviation	0.80	0.75	0.73	0.70	0.60	0.58	0.65	0.70	0.63	0.75	0.68	0.73
Network Mean =												
Natl. Mean =												
% Ca < 11.0 or 10.2	99%	90%	91%	88%	93%	93%	91%	93%	93%	90%	95%	96%



*Methodology: a) Monthly values based on patient's monthly average of all values present for the month; b) Quarter values are average of all values for quarter; c) Values not averaged use last value present at months end.

Haviland Kidney Center - PCU

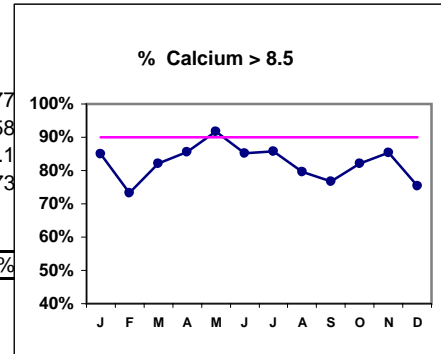
Quality Assurance Reports (Excludes patients in first 3 months of treatment - as of Dec. 31, 2002)

Through period ending Dec. 31, 2002

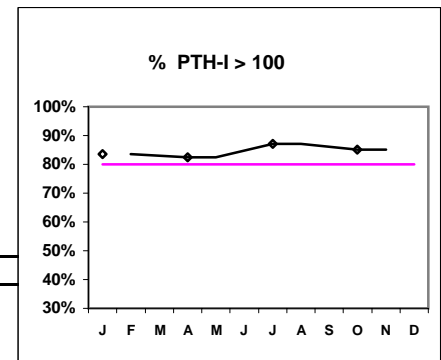
III. OSTEODYSTROPHY - CONT.

J F M A M J J A S O N D

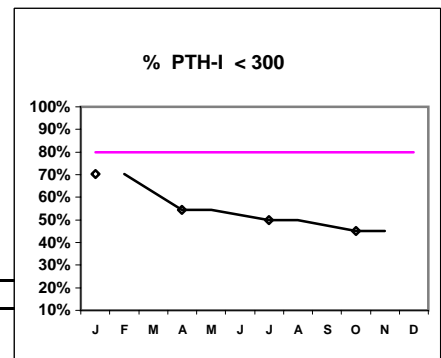
# Calcium	67	71	67	69	72	74	70	69	73	73	75	77
# Calcium > 8.5	57	52	55	59	66	63	60	55	56	60	64	58
Pop. Mean =	9.2	9.1	9.1	9.2	9.2	9.1	9.2	9.0	9.1	9.2	9.2	9.1
Std. Deviation =	0.80	0.75	0.73	0.70	0.60	0.58	0.65	0.70	0.63	0.75	0.68	0.73
Network Mean =												
Natl. Mean =												
% Calcium > 8.5	85%	73%	82%	86%	92%	85%	86%	80%	77%	82%	85%	75%



# PTH-I	67	57	70	20
# PTH-I > 100	56	47	61	17
Pop. Mean =	274	343	404	360
Std. Deviation =	210	266	332	257
Network Mean =				
Natl. Mean =				
% PTH-I > 100	84%	82%	87%	85%



# PTH-I	67	57	70	20
# PTH-I < 300	47	31	35	9
Pop. Mean =	274	343	404	360
Std. Deviation =	210	266	332	257
Network Mean =				
Natl. Mean =				
% PTH-I < 300	70%	54%	50%	45%



*Methodology: a) Monthly values based on patient's monthly average of all values present for the month; b) Quarter values are average of all values for quarter; c) Values not averaged use last value present at months end.

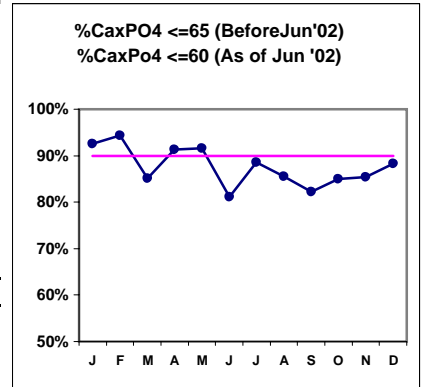
Haviland Kidney Center - PCU

Quality Assurance Reports (Excludes patients in first 3 months of treatment - as of Dec. 31, 2002)

Through period ending Dec. 31, 2002

III. OSTEODYSTROPHY - CONT.

	J	F	M	A	M	J	J	A	S	O	N	D
# Ca x PO4	67	71	67	69	72	74	70	69	73	73	75	77
# Ca x PO4 <= 65	62	67	57	63	66							
# Ca x PO4 <= 60						60	62	59	60	62	64	68
Pop. Mean =	45.8	43.5	45.7	45.3	45.9	46	45.4	44.9	46	45.1	46.2	45.6
Std. Deviation =	14.6	12.1	14.7	13.5	14.4	12.9	12.3	13.7	12.7	13.6	12.4	11.0
Network Mean =												
Natl. Mean =												
CaxPO4 <= 65or60	93%	94%	85%	91%	92%	81%	89%	86%	82%	85%	85%	88%



*Methodology: a) Monthly values based on patient's monthly average of all values present for the month; b) Quarter values are average of all values for quarter; c) Values not averaged use last value present at months end.

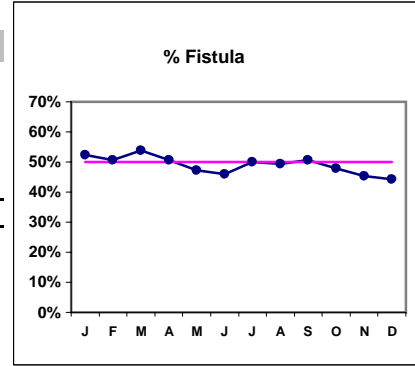
Haviland Kidney Center - PCU

Quality Assurance Reports (Excludes patients in first 3 months of treatment - as of Dec. 31, 2002)

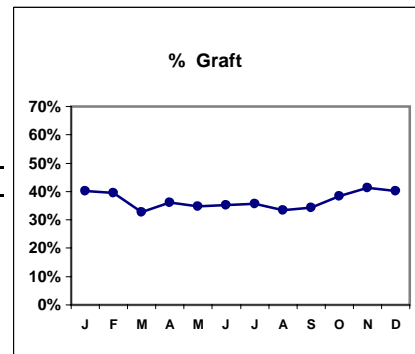
Through period ending Dec. 31, 2002

IV. ACCESS

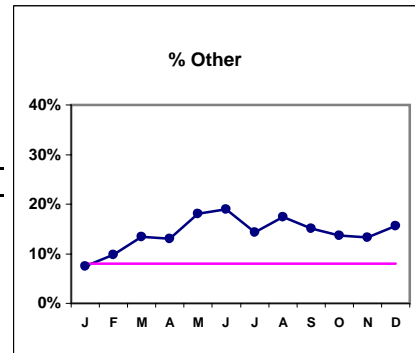
	J	F	M	A	M	J	J	A	S	O	N	D
# Access	67	71	67	69	72	74	70	69	73	73	75	77
# Fistula	35	36	36	35	34	34	35	34	37	35	34	34
Network %												
Natl. % - 2000	30%	30%	30%	30%	30%	30%	30%	30%	30%	30%	30%	30%
% Fistula	52%	51%	54%	51%	47%	46%	50%	49%	51%	48%	45%	44%



# Access	67	71	67	69	72	74	70	69	73	73	75	77
# Graft	27	28	22	25	25	26	25	23	25	28	31	31
Network %												
Natl. %												
% Graft	40%	39%	33%	36%	35%	35%	36%	33%	34%	38%	41%	40%



# Access	67	71	67	69	72	74	70	69	73	73	75	77
# Other	5	7	9	9	13	14	10	12	11	10	10	12
Network %												
Natl. %												
% Other	7%	10%	13%	13%	18%	19%	14%	17%	15%	14%	13%	16%



*Methodology: a) Monthly values based on patient's monthly average of all values present for the month; b) Quarter values are average of all values for quarter; c) Values not averaged use last value present at months end.

Haviland Kidney Center - PCU

Quality Assurance Reports (Excludes patients in first 3 months of treatment - as of Dec. 31, 2002)

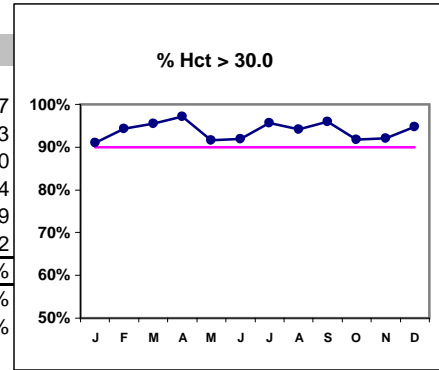
Through period ending Dec. 31, 2002

***Hct. values use Coulter method - as of July 2001**

V. ANEMIA

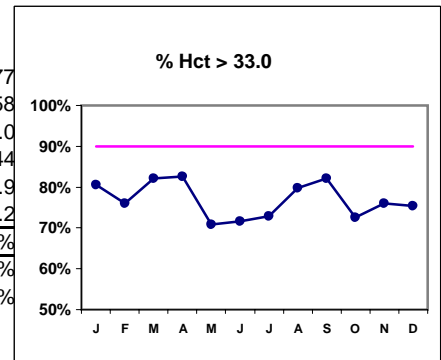
	J	F	M	A	M	J	J	A	S	O	N	D
# Hct	67	71	67	69	72	74	70	69	73	73	75	77
# Hct > 30.0	61	67	64	67	66	68	67	65	70	67	69	73
Pop. Mean =	35.6	35.2	35.4	35.3	34.7	34.6	35.2	35.4	35.8	35.2	35.0	35.0
Std. Deviation =	4.0	3.8	3.6	3.2	3.3	3.2	3.3	3.6	3.8	3.6	3.5	3.44
Network Mean =	33.9	33.9	33.9	33.9	33.9	33.9	33.9	33.9	33.9	33.9	33.9	33.9
Natl. Mean =	34.2	34.2	34.2	34.2	34.2	34.2	34.2	34.2	34.2	34.2	34.2	34.2
% Hct > 30.0	91%	94%	96%	97%	92%	92%	96%	94%	96%	92%	92%	95%
*% Network > 30.0	89%	89%	89%	89%	89%	89%	89%	89%	89%	89%	89%	89%
% Natl. > 30.0	79%	79%	79%	79%	79%	79%	79%	79%	79%	79%	79%	79%

* Figures for 2000



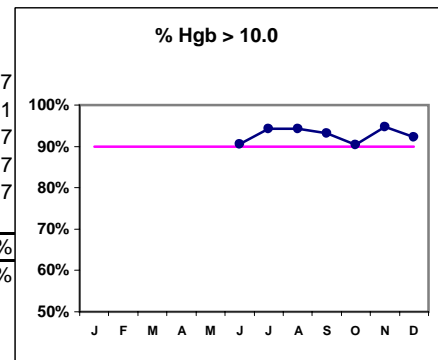
# Hct	67	71	67	69	72	74	70	69	73	73	75	77
# Hct > 33.0	54	54	55	57	51	53	51	55	60	53	57	58
Pop. Mean =	35.6	35.2	35.4	35.3	34.7	34.6	35.2	35.4	35.8	35.2	35.0	35.0
Std. Deviation =	4.0	3.8	3.6	3.2	3.3	3.2	3.3	3.6	3.8	3.6	3.5	3.44
Network Mean =	33.9	33.9	33.9	33.9	33.9	33.9	33.9	33.9	33.9	33.9	33.9	33.9
Natl. Mean =	34.2	34.2	34.2	34.2	34.2	34.2	34.2	34.2	34.2	34.2	34.2	34.2
% Hct > 33.0	81%	76%	82%	83%	71%	72%	73%	80%	82%	73%	76%	75%
*% Network > 33.0	74%	74%	74%	74%	74%	74%	74%	74%	74%	74%	74%	74%
% Natl. > 33.0	73%	73%	73%	73%	73%	73%	73%	73%	73%	73%	73%	73%

* Figures for 2000



# Hgb						74	70	69	73	73	75	77
# Hgb > 10.0						67	66	65	68	66	71	71
Pop. Mean =						11.5	11.7	11.7	11.8	11.6	11.7	11.7
Std. Deviation =						1.11	1.08	1.17	1.21	1.14	1.15	1.17
*Network Mean =	11.7	11.7	11.7	11.7	11.7	11.7	11.7	11.7	11.7	11.7	11.7	11.7
Natl. Mean =												
% Hgb > 10.0						91%	94%	94%	93%	90%	95%	92%
*% Network >= 10	93%	93%	93%	93%	93%	93%	93%	93%	93%	93%	93%	93%

* Figures for 2000



*Methodology: a) Monthly values based on patient's monthly average of all values present for the month; b) Quarter values are average of all values for quarter; c) Values not averaged use last value present at months end.

Haviland Kidney Center - PCU

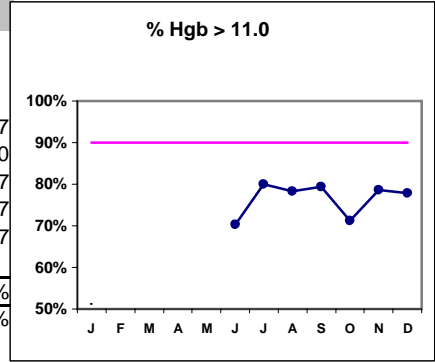
Quality Assurance Reports (Excludes patients in first 3 months of treatment - as of Dec. 31, 2002)

Through period ending Dec. 31, 2002

V. ANEMIA - CONT.

	J	F	M	A	M	J	J	A	S	O	N	D
# Hgb						74	70	69	73	73	75	77
# Hgb > 11.0						52	56	54	58	52	59	60
Pop. Mean =						11.5	11.7	11.7	11.8	11.6	11.7	11.7
Std. Deviation =						1.11	1.08	1.17	1.21	1.14	1.15	1.17
*Network Mean =	11.7	11.7	11.7	11.7	11.7	11.7	11.7	11.7	11.7	11.7	11.7	11.7
Natl. Mean =												
% Hgb > 11.0						70%	80%	78%	79%	71%	79%	78%
*% Network >= 11	76%	76%	76%	76%	76%	76%	76%	76%	76%	76%	76%	76%

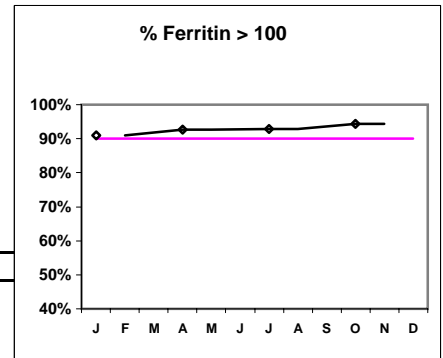
*Figures for 2000



Iron Profile

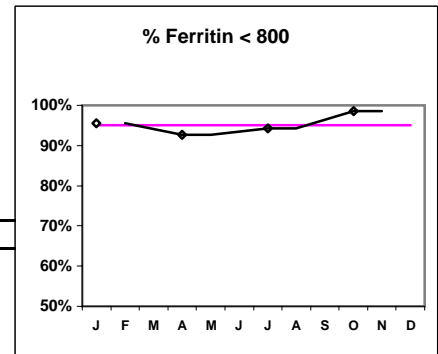
# Ferritin	67	69	70	71
# Ferritin > 100	61	64	65	67
Pop. Mean =	361	394	353	312
Std. Deviation =	222	262	234	173
*Network Mean =	489	489	489	489
Natl. Mean =				
% Ferritin > 100	91%	93%	93%	94%
*% Network > 100	88%	88%	88%	88%

*Figures for 2000



# Ferritin	67	69	70	71
# Ferritin < 800	64	64	66	70
Pop. Mean =	361	394	353	312
Std. Deviation =	222	262	234	173
*Network Mean =	489	489	489	489
Natl. Mean =				
% Ferritin < 800	96%	93%	94%	99%

*Figures for 2000



*Methodology: a) Monthly values based on patient's monthly average of all values present for the month; b) Quarter values are average of all values for quarter; c) Values not averaged use last value present at months end.

Haviland Kidney Center - PCU

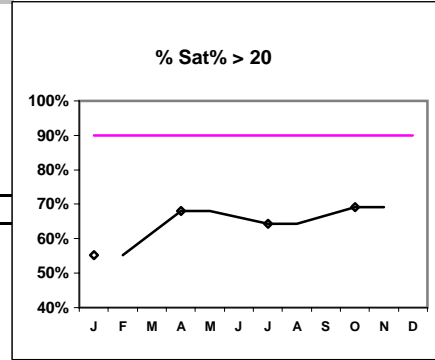
Quality Assurance Reports (Excludes patients in first 3 months of treatment - as of Dec. 31, 2002)

Through period ending Dec. 31, 2002

V. ANEMIA - CONT.

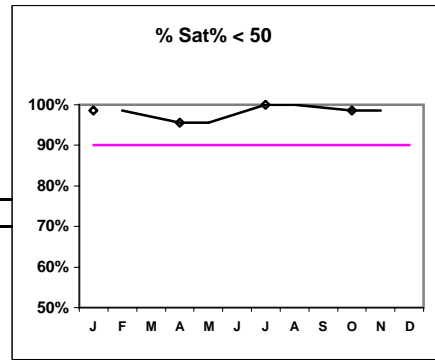
	J	F	M	A	M	J	J	A	S	O	N	D
# % Sat	67			69			70			68		
# % Sat > 20	37			47			45			47		
Pop. Mean =				27.1			24.9			25.8		
Std. Deviation =	10.5			11.5			9.73			9.78		
*Network Mean =	28			28			28			28		
Natl. Mean =												
% Sat% > 20	55%			68%			64%			69%		
*** Network > 20	71%			71%			71%			71%		

*Figures for 2000



# % Sat	67	69	70	68
# % Sat < 50	66	66	70	67
Pop. Mean =	24	27.1	24.9	25.8
Std. Deviation =	10.5	11.5	9.73	9.78
*Network Mean =	28	28	28	28
Natl. Mean =				
% Sat% < 50	99%	96%	###	99%

*Figures for 2000



*Methodology: a) Monthly values based on patient's monthly average of all values present for the month; b) Quarter values are average of all values for quarter; c) Values not averaged use last value present at months end.