

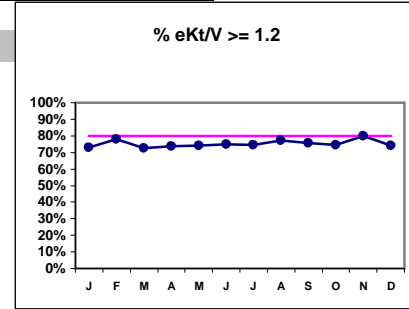
Northwest Kidney Centers - Consolidated Center Hemodialysis
Quality Assurance Reports (Excludes patients in first 6 months of treatment)
 Through period ending Dec. 31, 2001

I,j - I.S. Dept.

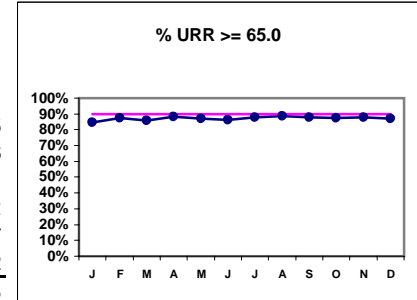
Note: Monthly values with an * are PACLAB values - as of July 2001

I. ADEQUACY OF DIALYSIS

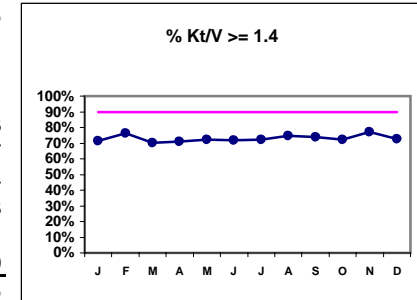
| | J | F | M | A | M | J | J | A | S | O | N | D |
|------------------|------|------|------|------|------|------|------|------|------|------|------|------|
| # eKt/V | 790 | 781 | 786 | 792 | 800 | 784 | 816 | 812 | 797 | 801 | 813 | 827 |
| # eKt/V >= 1.2 | 576 | 609 | 572 | 583 | 592 | 586 | 609 | 626 | 604 | 598 | 649 | 613 |
| Pop. Mean = | 1.31 | 1.37 | 1.34 | 1.34 | 1.35 | 1.33 | 1.35 | 1.39 | 1.35 | 1.37 | 1.39 | 1.33 |
| Std. Deviation = | 0.29 | 0.32 | 0.48 | 0.28 | 0.35 | 0.28 | 0.31 | 0.40 | 0.32 | 0.43 | 0.37 | 0.28 |
| Network Mean = | | | | | | | | | | | | |
| Natl. Mean = | | | | | | | | | | | | |
| % eKt/V >= 1.2 | 73% | 78% | 73% | 74% | 74% | 75% | 75% | 77% | 76% | 75% | 80% | 74% |



| | | | | | | | | | | | | |
|-------------------|------|------|------|------|------|------|------|------|------|------|------|------|
| # URR | 799 | 795 | 800 | 806 | 814 | 802 | 831 | 822 | 803 | 809 | 824 | 835 |
| # URR >= 65.0 | 675 | 696 | 688 | 712 | 709 | 690 | 730 | 728 | 705 | 706 | 723 | 726 |
| Pop. Mean = | 71.5 | 72.8 | 71.8 | 72.2 | 72.4 | 72.0 | 72.6 | 73.0 | 72.4 | 72.4 | 73.2 | 72.1 |
| Std. Deviation = | 7.82 | 7.6 | 8.7 | 7.3 | 7.2 | 7.1 | 7.0 | 7.2 | 7.6 | 7.3 | 7.6 | 7.2 |
| *Network Mean = | 71.7 | 71.7 | 71.7 | 71.7 | 71.7 | 71.7 | 71.7 | 71.7 | 71.7 | 71.7 | 71.7 | 71.7 |
| Natl. Mean = | 68.2 | 68.2 | 68.2 | 68.2 | 68.2 | 68.2 | 68.2 | 68.2 | 68.2 | 68.2 | 68.2 | 68.2 |
| % URR >= 65.0 | 84% | 88% | 86% | 88% | 87% | 86% | 88% | 89% | 88% | 87% | 88% | 87% |
| *Network % > 65.0 | 86% | 86% | 86% | 86% | 86% | 86% | 86% | 86% | 86% | 86% | 86% | 86% |
| *Natl. % > 65.0 | 82% | 82% | 82% | 82% | 82% | 82% | 82% | 82% | 82% | 82% | 82% | 82% |

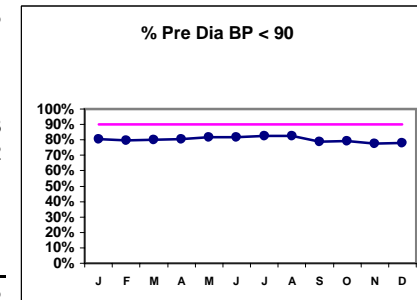


| | | | | | | | | | | | | |
|----------------------|------|------|------|------|------|------|------|------|------|------|------|------|
| # Kt/V | 790 | 781 | 783 | 791 | 799 | 783 | 815 | 812 | 796 | 802 | 811 | 823 |
| # Kt/V >= 1.4 | 563 | 596 | 549 | 563 | 578 | 563 | 590 | 606 | 589 | 578 | 625 | 597 |
| Pop. Mean = | 1.52 | 1.59 | 1.55 | 1.54 | 1.56 | 1.54 | 1.56 | 1.61 | 1.57 | 1.58 | 1.61 | 1.54 |
| Std. Deviation = | 0.34 | 0.38 | 0.58 | 0.33 | 0.42 | 0.33 | 0.37 | 0.47 | 0.37 | 0.51 | 0.44 | 0.33 |
| Network Mean = | | | | | | | | | | | | |
| Natl. Mean 1999 = | 1.40 | 1.40 | 1.40 | 1.40 | 1.40 | 1.40 | 1.40 | 1.40 | 1.40 | 1.40 | 1.40 | 1.40 |
| % Kt/V >= 1.4 | 71% | 76% | 70% | 71% | 72% | 72% | 72% | 75% | 74% | 72% | 77% | 73% |
| % Kt/V > 1.2 | 88% | 91% | 88% | 90% | 89% | 89% | 90% | 92% | 90% | 90% | 90% | 90% |
| Network > 1.2 '99 | 83% | 83% | 83% | 83% | 83% | 83% | 83% | 83% | 83% | 83% | 83% | 83% |
| Natl. % > 1.2 - 2000 | 86% | 86% | 86% | 86% | 86% | 86% | 86% | 86% | 86% | 86% | 86% | 86% |

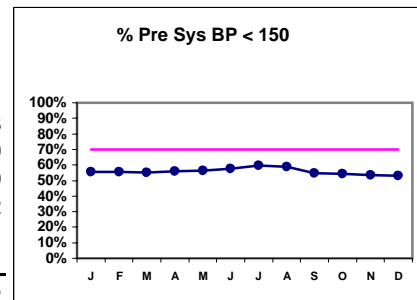


Blood Pressure Control (Pre)

| | | | | | | | | | | | | |
|-------------------|------|------|------|------|------|------|------|------|------|------|------|------|
| # Pre Dia BP | 813 | 812 | 822 | 818 | 826 | 832 | 839 | 840 | 832 | 823 | 838 | 848 |
| # Pre Dia BP < 90 | 654 | 648 | 658 | 657 | 675 | 681 | 693 | 693 | 655 | 652 | 651 | 662 |
| Pop. Mean = | 79.9 | 80.3 | 79.5 | 79.6 | 79.3 | 79.1 | 78.7 | 78.5 | 80.1 | 80.4 | 80.4 | 80.1 |
| Std. Deviation = | 13.3 | 14.1 | 12.8 | 13.6 | 13 | 13 | 13 | 12.9 | 13.8 | 14 | 14 | 13.1 |
| Network Mean = | | | | | | | | | | | | |
| Natl. Mean = | | | | | | | | | | | | |
| % Pre Dia BP < 90 | 80% | 80% | 80% | 80% | 82% | 82% | 83% | 83% | 79% | 79% | 78% | 78% |



| | | | | | | | | | | | | |
|--------------------|------|------|------|------|------|------|------|------|------|------|------|------|
| # Pre Sys BP | 813 | 812 | 822 | 818 | 826 | 832 | 839 | 840 | 832 | 823 | 838 | 848 |
| # Pre Sys BP < 150 | 451 | 452 | 453 | 459 | 465 | 479 | 500 | 494 | 457 | 446 | 448 | 449 |
| Pop. Mean = | 147 | 148 | 147 | 147 | 147 | 146 | 145 | 145 | 148 | 148 | 148 | 149 |
| Std. Deviation = | 20.3 | 20.6 | 20.5 | 21.1 | 21.2 | 21.5 | 20.8 | 21.1 | 21.8 | 22.5 | 22.3 | 22.2 |
| Network Mean = | | | | | | | | | | | | |
| Natl. Mean = | | | | | | | | | | | | |
| % Pre Sys BP < 150 | 55% | 56% | 55% | 56% | 56% | 58% | 60% | 59% | 55% | 54% | 53% | 53% |



*Methodology: a) Monthly values based on patient's monthly average of all values present for the month; b) Quarter values are average of all values for quarter; c) Values not averaged use last value present at months end.

Northwest Kidney Centers - Consolidated Center Hemodialysis

I.j - I.S. Dept.

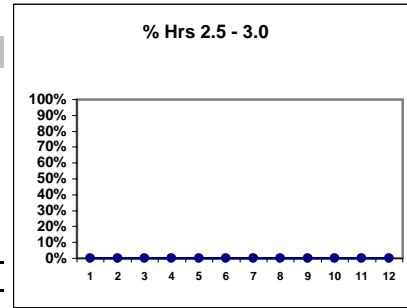
Quality Assurance Reports (Excludes patients in first 6 months of treatment)

Through period ending Dec. 31, 2001

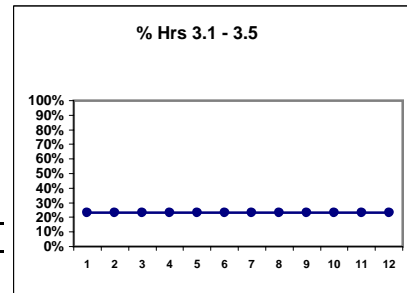
DO NOT USE THIS PAGE!!!

I. ADEQUACY OF DIALYSIS - CONT.

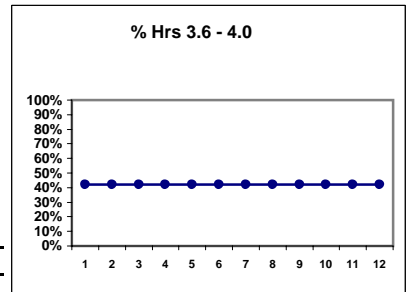
| | J | J | J | J | J | J | J | J | J | J | J | J |
|------------------|------|------|------|------|------|------|------|------|------|------|------|------|
| # Dialysis Hrs | | | | | | | | | | | | |
| # Hrs. 2.5 - 3.0 | | | | | | | | | | | | |
| Pop. Mean = | | | | | | | | | | | | |
| Std. Deviation = | 1.19 | 1.19 | 1.19 | 1.19 | 1.19 | 1.19 | 1.19 | 1.19 | 1.19 | 1.19 | 1.19 | 1.19 |
| Network Mean = | | | | | | | | | | | | |
| Natl. Mean = | | | | | | | | | | | | |
| % Hrs. 2.5 - 3.0 | #### | #### | #### | #### | #### | #### | #### | #### | #### | #### | #### | #### |



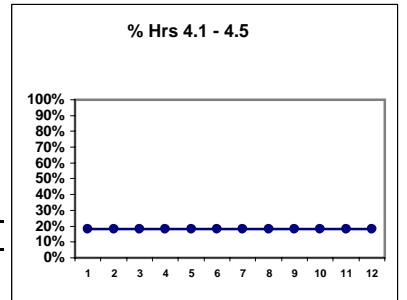
| | | | | | | | | | | | | |
|------------------|------|------|------|------|------|------|------|------|------|------|------|------|
| # Dialysis Hrs | 744 | 744 | 744 | 744 | 744 | 744 | 744 | 744 | 744 | 744 | 744 | 744 |
| # Hrs 3.1 - 3.5 | 174 | 174 | 174 | 174 | 174 | 174 | 174 | 174 | 174 | 174 | 174 | 174 |
| Pop. Mean = | 3.9 | 3.9 | 3.9 | 3.9 | 3.9 | 3.9 | 3.9 | 3.9 | 3.9 | 3.9 | 3.9 | 3.9 |
| Std. Deviation = | 1.19 | 1.19 | 1.19 | 1.19 | 1.19 | 1.19 | 1.19 | 1.19 | 1.19 | 1.19 | 1.19 | 1.19 |
| Network Mean = | | | | | | | | | | | | |
| Natl. Mean = | | | | | | | | | | | | |
| % Hrs 3.1 - 3.5 | 23% | 23% | 23% | 23% | 23% | 23% | 23% | 23% | 23% | 23% | 23% | 23% |



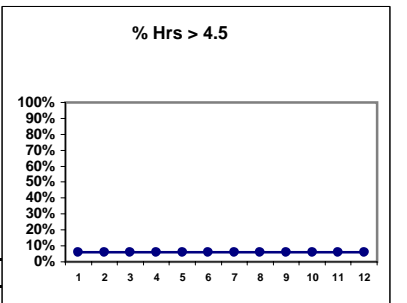
| | | | | | | | | | | | | |
|------------------|------|------|------|------|------|------|------|------|------|------|------|------|
| # Dialysis Hrs | 744 | 744 | 744 | 744 | 744 | 744 | 744 | 744 | 744 | 744 | 744 | 744 |
| # Hrs 3.6 - 4.0 | 314 | 314 | 314 | 314 | 314 | 314 | 314 | 314 | 314 | 314 | 314 | 314 |
| Pop. Mean = | 3.9 | 3.9 | 3.9 | 3.9 | 3.9 | 3.9 | 3.9 | 3.9 | 3.9 | 3.9 | 3.9 | 3.9 |
| Std. Deviation = | 1.19 | 1.19 | 1.19 | 1.19 | 1.19 | 1.19 | 1.19 | 1.19 | 1.19 | 1.19 | 1.19 | 1.19 |
| Network Mean = | | | | | | | | | | | | |
| Natl. Mean = | | | | | | | | | | | | |
| % Hrs 3.6 - 4.0 | 42% | 42% | 42% | 42% | 42% | 42% | 42% | 42% | 42% | 42% | 42% | 42% |



| | | | | | | | | | | | | |
|------------------|------|------|------|------|------|------|------|------|------|------|------|------|
| # Dialysis Hrs | 744 | 744 | 744 | 744 | 744 | 744 | 744 | 744 | 744 | 744 | 744 | 744 |
| # Hrs 4.1 - 4.5 | 136 | 136 | 136 | 136 | 136 | 136 | 136 | 136 | 136 | 136 | 136 | 136 |
| Pop. Mean = | 3.9 | 3.9 | 3.9 | 3.9 | 3.9 | 3.9 | 3.9 | 3.9 | 3.9 | 3.9 | 3.9 | 3.9 |
| Std. Deviation = | 1.19 | 1.19 | 1.19 | 1.19 | 1.19 | 1.19 | 1.19 | 1.19 | 1.19 | 1.19 | 1.19 | 1.19 |
| Network Mean = | | | | | | | | | | | | |
| Natl. Mean = | | | | | | | | | | | | |
| % Hrs 4.1 - 4.5 | 18% | 18% | 18% | 18% | 18% | 18% | 18% | 18% | 18% | 18% | 18% | 18% |



| | | | | | | | | | | | | |
|------------------|------|------|------|------|------|------|------|------|------|------|------|------|
| # Dialysis Hrs | 744 | 744 | 744 | 744 | 744 | 744 | 744 | 744 | 744 | 744 | 744 | 744 |
| # Hrs > 4.5 | 46 | 46 | 46 | 46 | 46 | 46 | 46 | 46 | 46 | 46 | 46 | 46 |
| Pop. Mean = | 3.9 | 3.9 | 3.9 | 3.9 | 3.9 | 3.9 | 3.9 | 3.9 | 3.9 | 3.9 | 3.9 | 3.9 |
| Std. Deviation = | 1.19 | 1.19 | 1.19 | 1.19 | 1.19 | 1.19 | 1.19 | 1.19 | 1.19 | 1.19 | 1.19 | 1.19 |
| Network Mean = | | | | | | | | | | | | |
| Natl. Mean = | | | | | | | | | | | | |
| % Hrs > 4.5 | 6% | 6% | 6% | 6% | 6% | 6% | 6% | 6% | 6% | 6% | 6% | 6% |



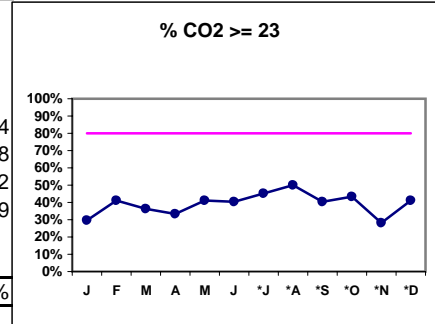
*Methodology: a) Monthly values based on patient's monthly average of all values present for the month; b) Quarter values are average of all values for quarter; c) Values not averaged use last value present at months end.

Northwest Kidney Centers - Consolidated Center Hemodialysis
Quality Assurance Reports (Excludes patients in first 6 months of treatment)
Through period ending Dec. 31, 2001

I,j - I.S. Dept.

I. ADEQUACY OF DIALYSIS - CONT.

| | J | F | M | A | M | J | *J | *A | *S | *O | *N | *D |
|------------------|------|------|------|------|------|------|------|------|------|------|------|------|
| # CO2 | 808 | 806 | 816 | 813 | 823 | 824 | 835 | 837 | 821 | 815 | 830 | 844 |
| # CO2 >= 23 | 238 | 330 | 295 | 271 | 337 | 334 | 376 | 417 | 331 | 352 | 233 | 348 |
| Pop. Mean = | 20.9 | 22 | 21 | 21 | 22 | 22 | 22 | 22 | 21 | 22 | 21 | 22 |
| Std. Deviation = | 3.40 | 3.75 | 3.75 | 3.59 | 3.39 | 3.05 | 2.85 | 3.17 | 3.78 | 3.61 | 3.58 | 3.19 |
| Network Mean = | | | | | | | | | | | | |
| Natl. Mean = | | | | | | | | | | | | |
| % CO2 >= 23 | 29% | 41% | 36% | 33% | 41% | 41% | 45% | 50% | 40% | 43% | 28% | 41% |



*Methodology: a) Monthly values based on patient's monthly average of all values present for the month; b) Quarter values are average of all values for quarter; c) Values not averaged use last value present at months end.

Northwest Kidney Centers - Consolidated Center Hemodialysis
Quality Assurance Reports (Excludes patients in first 6 months of treatment)
 Through period ending Dec. 31, 2001

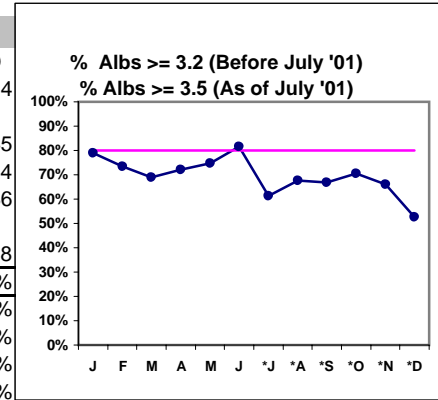
I.j - I.S. Dept.

***Albumin values use BCG method - as of July 2001**

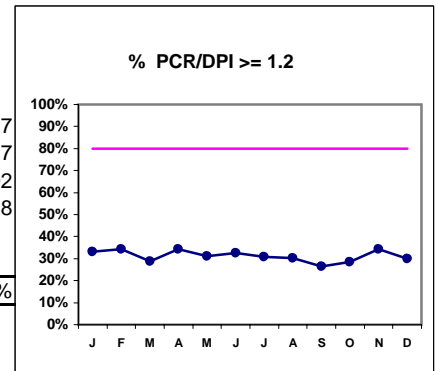
II. NUTRITION

| | J | F | M | A | M | J | *J | *A | *S | *O | *N | *D |
|---------------------|------|------|------|------|------|------|------|------|------|------|------|------|
| # Albumin | 809 | 806 | 816 | 813 | 823 | 824 | 835 | 838 | 821 | 816 | 830 | 844 |
| # Albumin >= 3.2 | 638 | 592 | 563 | 586 | 615 | 673 | | | | | | |
| # Albumin >= 3.5 | | | | | | | 513 | 567 | 548 | 576 | 548 | 445 |
| Pop. Mean = | 3.42 | 3.4 | 3.3 | 3.4 | 3.4 | 3.5 | 3.5 | 3.6 | 3.6 | 3.6 | 3.6 | 3.4 |
| Std. Deviation = | 0.4 | 0.42 | 0.43 | 0.41 | 0.44 | 0.45 | 0.35 | 0.37 | 0.33 | 0.36 | 0.35 | 0.36 |
| Network Mean = | | | | | | | | | | | | |
| Natl. Mean = | 3.8 | 3.8 | 3.8 | 3.8 | 3.8 | 3.8 | 3.8 | 3.8 | 3.8 | 3.8 | 3.8 | 3.8 |
| % Alb >= 3.2 or 3.5 | 79% | 73% | 69% | 72% | 75% | 82% | 61% | 68% | 67% | 71% | 66% | 53% |
| NKC % >= 3.7 | | | | | | | 35% | 42% | 41% | 47% | 42% | 26% |
| NKC % >= 4.0 | | | | | | | 10% | 15% | 11% | 17% | 13% | 5% |
| *Natl. % >= 3.5-BCG | | | | | | | 80% | 80% | 80% | 80% | 80% | 80% |
| *Natl. % >= 4.0-BCG | | | | | | | 29% | 29% | 29% | 29% | 29% | 29% |
| *Network Mean = | 77% | 77% | 77% | 77% | 77% | 77% | 77% | 77% | 77% | 77% | 77% | 77% |

*Figures for 2000



| | | | | | | | | | | | | |
|------------------|------|------|------|------|------|------|------|------|------|------|------|------|
| # PCR/DPI | 790 | 781 | 786 | 792 | 800 | 784 | 816 | 812 | 797 | 801 | 813 | 827 |
| # PCR/DPI >= 1.2 | 262 | 268 | 226 | 271 | 250 | 256 | 252 | 245 | 210 | 229 | 280 | 247 |
| Pop. Mean = | 1.05 | 1.06 | 1.02 | 1.06 | 1.05 | 1.04 | 1.04 | 1.03 | 1.01 | 1.02 | 1.06 | 1.02 |
| Std. Deviation = | 0.28 | 0.28 | 0.29 | 0.27 | 0.28 | 0.26 | 0.28 | 0.27 | 0.25 | 0.26 | 0.28 | 0.28 |
| Network Mean = | | | | | | | | | | | | |
| Natl. Mean = | | | | | | | | | | | | |
| % PCR/DPI >= 1.2 | 33% | 34% | 29% | 34% | 31% | 33% | 31% | 30% | 26% | 29% | 34% | 30% |



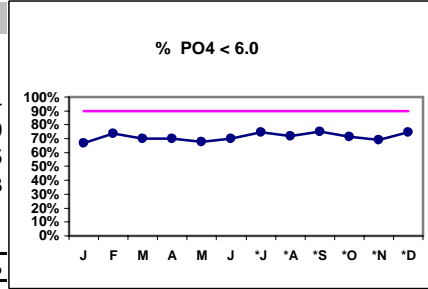
*Methodology: a) Monthly values based on patient's monthly average of all values present for the month; b) Quarter values are average of all values for quarter; c) Values not averaged use last value present at months end.

Northwest Kidney Centers - Consolidated Center Hemodialysis
Quality Assurance Reports (Excludes patients in first 6 months of treatment)
Through period ending Dec. 31, 2001

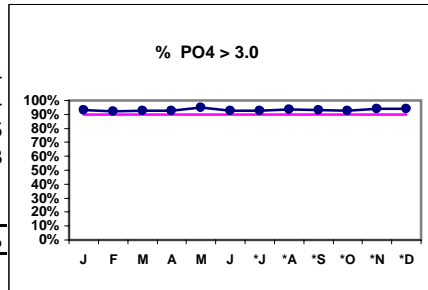
I.j - I.S. Dept.

III. OSTEODYSTROPHY

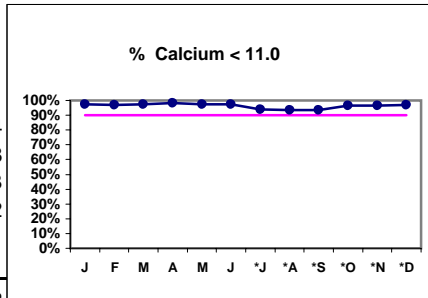
| | J | F | M | A | M | J | *J | *A | *S | *O | *N | *D |
|----------------|------|------|------|------|------|------|------|------|------|------|------|------|
| # PO4 | 810 | 806 | 816 | 813 | 823 | 824 | 835 | 839 | 821 | 817 | 830 | 844 |
| # PO4 < 6.0 | 542 | 596 | 572 | 568 | 556 | 576 | 622 | 602 | 615 | 582 | 575 | 629 |
| Pop. Mean = | 5.33 | 5.08 | 5.25 | 5.21 | 5.39 | 5.21 | 5.07 | 5.15 | 5.08 | 5.15 | 5.28 | 5.05 |
| Std. Deviation | 1.6 | 1.61 | 1.66 | 1.67 | 1.61 | 1.68 | 1.54 | 1.48 | 1.52 | 1.53 | 1.55 | 1.53 |
| Network Mean = | | | | | | | | | | | | |
| Natl. Mean = | | | | | | | | | | | | |
| % PO4 < 6.0 | 67% | 74% | 70% | 70% | 68% | 70% | 74% | 72% | 75% | 71% | 69% | 75% |



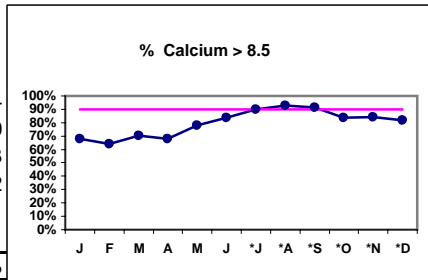
| | | | | | | | | | | | | |
|----------------|------|------|------|------|------|------|------|------|------|------|------|------|
| # PO4 | 810 | 806 | 816 | 813 | 823 | 824 | 835 | 839 | 821 | 817 | 830 | 844 |
| # PO4 > 3.0 | 755 | 743 | 757 | 754 | 782 | 762 | 772 | 785 | 766 | 758 | 782 | 794 |
| Pop. Mean = | 5.33 | 5.08 | 5.25 | 5.21 | 5.39 | 5.21 | 5.07 | 5.15 | 5.08 | 5.15 | 5.28 | 5.05 |
| Std. Deviation | 1.6 | 1.61 | 1.66 | 1.67 | 1.61 | 1.68 | 1.54 | 1.48 | 1.52 | 1.53 | 1.55 | 1.53 |
| Network Mean = | | | | | | | | | | | | |
| Natl. Mean = | | | | | | | | | | | | |
| % PO4 > 3.0 | 93% | 92% | 93% | 93% | 95% | 92% | 92% | 94% | 93% | 93% | 94% | 94% |



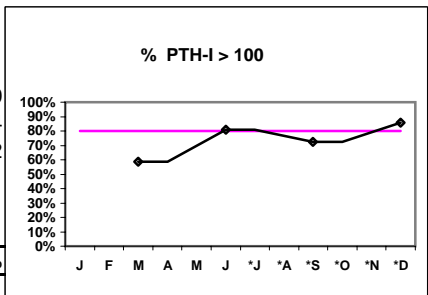
| | | | | | | | | | | | | |
|------------------|------|------|------|------|------|------|------|------|------|------|------|------|
| # Calcium | 810 | 806 | 816 | 813 | 823 | 825 | 835 | 839 | 821 | 817 | 830 | 844 |
| # Calcium < 11.0 | 790 | 781 | 796 | 800 | 801 | 802 | 786 | 783 | 769 | 788 | 803 | 818 |
| Pop. Mean = | 8.98 | 8.9 | 9.0 | 9.0 | 9.2 | 9.3 | 9.6 | 9.7 | 9.6 | 9.3 | 9.3 | 9.3 |
| Std. Deviation | 0.93 | 0.93 | 0.95 | 0.88 | 0.87 | 0.85 | 0.83 | 0.82 | 0.83 | 0.85 | 0.85 | 0.82 |
| Network Mean = | | | | | | | | | | | | |
| Natl. Mean = | | | | | | | | | | | | |
| % Calcium < 11.0 | 98% | 97% | 98% | 98% | 97% | 97% | 94% | 93% | 94% | 96% | 97% | 97% |



| | | | | | | | | | | | | |
|------------------|------|------|------|------|------|------|------|------|------|------|------|------|
| # Calcium | 810 | 806 | 816 | 813 | 823 | 825 | 835 | 839 | 821 | 817 | 830 | 844 |
| # Calcium > 8.5 | 550 | 515 | 572 | 553 | 641 | 689 | 753 | 778 | 750 | 683 | 697 | 690 |
| Pop. Mean = | 8.98 | 8.9 | 9.0 | 9.0 | 9.2 | 9.3 | 9.6 | 9.7 | 9.6 | 9.3 | 9.3 | 9.3 |
| Std. Deviation = | 0.93 | 0.93 | 0.95 | 0.88 | 0.87 | 0.85 | 0.83 | 0.82 | 0.83 | 0.85 | 0.85 | 0.82 |
| Network Mean = | | | | | | | | | | | | |
| Natl. Mean = | | | | | | | | | | | | |
| % Calcium > 8.5 | 68% | 64% | 70% | 68% | 78% | 84% | 90% | 93% | 91% | 84% | 84% | 82% |



| | | | | | | | | |
|------------------|--|-----|--|-----|--|-----|--|-----|
| # PTH-I | | 811 | | 468 | | 830 | | 530 |
| # PTH-I > 100 | | 474 | | 378 | | 603 | | 454 |
| Pop. Mean = | | 222 | | 326 | | 305 | | 342 |
| Std. Deviation = | | 272 | | 299 | | 321 | | 281 |
| Network Mean = | | | | | | | | |
| Natl. Mean = | | | | | | | | |
| % PTH-I > 100 | | 58% | | 81% | | 73% | | 86% |



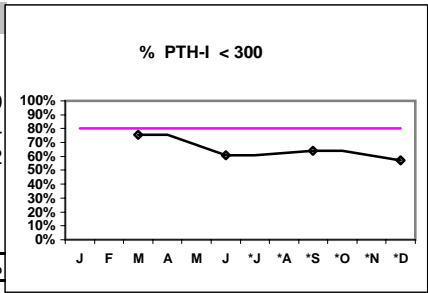
*Methodology: a) Monthly values based on patient's monthly average of all values present for the month; b) Quarter values are average of all values for quarter; c) Values not averaged use last value present at months end.

Northwest Kidney Centers - Consolidated Center Hemodialysis
Quality Assurance Reports (Excludes patients in first 6 months of treatment)
Through period ending Dec. 31, 2001

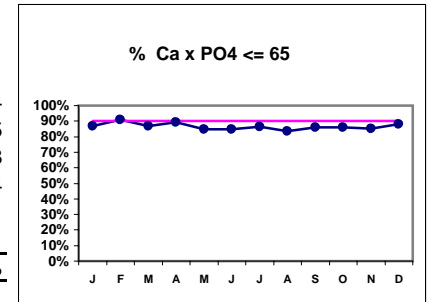
I,j - I.S. Dept.

III. OSTEODYSTROPHY - CONT.

| | J | F | M | A | M | J | *J | *A | *S | *O | *N | *D |
|-------------------------|---|---|-----|---|---|-----|----|----|-----|----|----|-----|
| # PTH-I | | | 811 | | | 468 | | | 830 | | | 530 |
| # PTH-I < 300 | | | 613 | | | 285 | | | 530 | | | 304 |
| Pop. Mean = | | | 222 | | | 326 | | | 305 | | | 342 |
| Std. Deviation = | | | 272 | | | 299 | | | 321 | | | 281 |
| Network Mean = | | | | | | | | | | | | |
| Natl. Mean = | | | | | | | | | | | | |
| % PTH-I < 300 | | | 76% | | | 61% | | | 64% | | | 57% |



| | | | | | | | | | | | | |
|----------------------------|------|------|------|------|------|------|------|------|------|------|------|------|
| # Ca x PO4 | 810 | 806 | 816 | 813 | 823 | 824 | 835 | 839 | 821 | 817 | 830 | 844 |
| # Ca x PO4 <= 65 | 702 | 733 | 710 | 726 | 698 | 697 | 723 | 701 | 707 | 702 | 707 | 745 |
| Pop. Mean = | 47.7 | 45.0 | 47.0 | 46.5 | 49.2 | 48.4 | 48.5 | 49.7 | 49.0 | 48.0 | 49.1 | 46.8 |
| Std. Deviation = | 14.7 | 14.3 | 15.4 | 15.0 | 14.8 | 16.0 | 14.9 | 14.6 | 15.0 | 14.7 | 14.9 | 14.4 |
| Network Mean = | | | | | | | | | | | | |
| Natl. Mean = | | | | | | | | | | | | |
| % Ca x PO4 <= 65 | 87% | 91% | 87% | 89% | 85% | 85% | 87% | 84% | 86% | 86% | 85% | 88% |



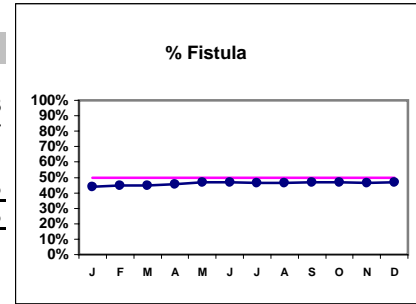
*Methodology: a) Monthly values based on patient's monthly average of all values present for the month; b) Quarter values are average of all values for quarter; c) Values not averaged use last value present at months end.

Northwest Kidney Centers - Consolidated Center Hemodialysis
Quality Assurance Reports (Excludes patients in first 6 months of treatment)
Through period ending Dec. 31, 2001

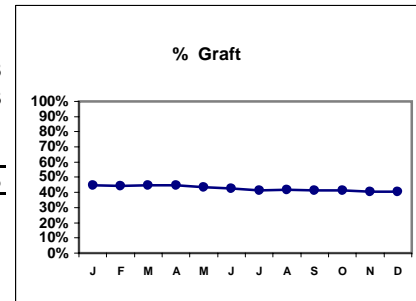
I,j - I.S. Dept.

IV. ACCESS

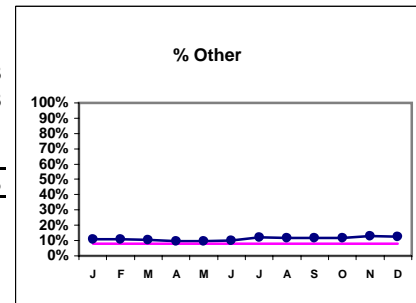
| | J | F | M | A | M | J | J | A | S | O | N | D |
|----------------|-----|-----|-----|-----|-----|-----|-----|-----|-----|-----|-----|-----|
| # Access | 813 | 812 | 822 | 818 | 826 | 832 | 839 | 840 | 832 | 824 | 838 | 848 |
| # Fistula | 358 | 363 | 367 | 373 | 386 | 391 | 389 | 391 | 390 | 387 | 390 | 397 |
| Network % | | | | | | | | | | | | |
| Natl. % - 2000 | 30% | 30% | 30% | 30% | 30% | 30% | 30% | 30% | 30% | 30% | 30% | 30% |
| % Fistula | 44% | 45% | 45% | 46% | 47% | 47% | 46% | 47% | 47% | 47% | 47% | 47% |



| | | | | | | | | | | | | |
|-----------|-----|-----|-----|-----|-----|-----|-----|-----|-----|-----|-----|-----|
| # Access | 813 | 812 | 822 | 818 | 826 | 832 | 839 | 840 | 832 | 824 | 838 | 848 |
| # Graft | 365 | 360 | 368 | 365 | 359 | 356 | 347 | 350 | 344 | 342 | 339 | 343 |
| Network % | | | | | | | | | | | | |
| Natl. % | | | | | | | | | | | | |
| % Graft | 45% | 44% | 45% | 45% | 43% | 43% | 41% | 42% | 41% | 42% | 40% | 40% |



| | | | | | | | | | | | | |
|-----------|-----|-----|-----|-----|-----|-----|-----|-----|-----|-----|-----|-----|
| # Access | 813 | 812 | 822 | 818 | 826 | 832 | 839 | 840 | 832 | 824 | 838 | 848 |
| # Other | 90 | 89 | 87 | 80 | 81 | 85 | 103 | 99 | 98 | 95 | 109 | 108 |
| Network % | | | | | | | | | | | | |
| Natl. % | | | | | | | | | | | | |
| % Other | 11% | 11% | 11% | 10% | 10% | 10% | 12% | 12% | 12% | 12% | 13% | 13% |



*Methodology: a) Monthly values based on patient's monthly average of all values present for the month; b) Quarter values are average of all values for quarter; c) Values not averaged use last value present at months end.

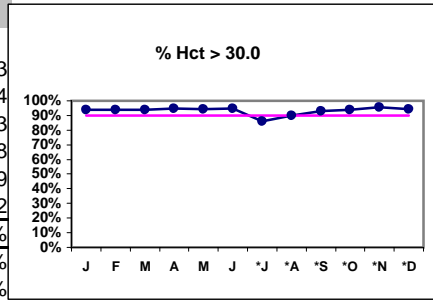
Northwest Kidney Centers - Consolidated Center Hemodialysis
Quality Assurance Reports (Excludes patients in first 6 months of treatment)
 Through period ending Dec. 31, 2001

I,j - I.S. Dept.

***Hct. values use Coulter method - as of July 2001**

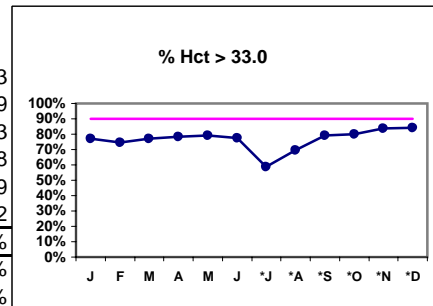
V. ANEMIA

| | J | F | M | A | M | J | *J | *A | *S | *O | *N | *D |
|-------------------|------|------|------|------|------|------|------|------|------|------|------|------|
| # Hct | 772 | 772 | 796 | 785 | 794 | 795 | 834 | 837 | 821 | 812 | 830 | 843 |
| # Hct > 30.0 | 725 | 725 | 746 | 745 | 750 | 753 | 718 | 754 | 765 | 762 | 793 | 794 |
| Pop. Mean = | 35.6 | 35.5 | 35.7 | 35.8 | 35.8 | 35.8 | 33.9 | 34.5 | 35.6 | 35.9 | 36.3 | 36.3 |
| Std. Deviation = | 3.74 | 3.73 | 4.05 | 3.72 | 3.72 | 3.78 | 3.85 | 3.78 | 3.87 | 3.84 | 3.9 | 4.08 |
| Network Mean = | 33.9 | 33.9 | 33.9 | 33.9 | 33.9 | 33.9 | 33.9 | 33.9 | 33.9 | 33.9 | 33.9 | 33.9 |
| Natl. Mean = | 34.2 | 34.2 | 34.2 | 34.2 | 34.2 | 34.2 | 34.2 | 34.2 | 34.2 | 34.2 | 34.2 | 34.2 |
| % Hct > 30.0 | 94% | 94% | 94% | 95% | 94% | 95% | 86% | 90% | 93% | 94% | 96% | 94% |
| *% Network > 30.0 | 89% | 89% | 89% | 89% | 89% | 89% | 89% | 89% | 89% | 89% | 89% | 89% |
| % Natl. > 30.0 | 79% | 79% | 79% | 79% | 79% | 79% | 79% | 79% | 79% | 79% | 79% | 79% |



* Figures for 2000

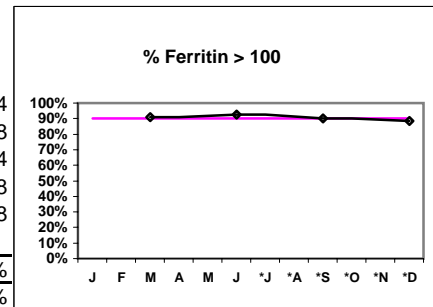
| | | | | | | | | | | | | |
|-------------------|------|------|------|------|------|------|------|------|------|------|------|------|
| # Hct | 772 | 772 | 796 | 785 | 794 | 795 | 834 | 837 | 821 | 812 | 830 | 843 |
| # Hct > 33.0 | 595 | 576 | 614 | 616 | 627 | 617 | 491 | 584 | 651 | 648 | 696 | 709 |
| Pop. Mean = | 35.6 | 35.5 | 35.7 | 35.8 | 35.8 | 35.8 | 33.9 | 34.5 | 35.6 | 35.9 | 36.3 | 36.3 |
| Std. Deviation = | 3.74 | 3.73 | 4.05 | 3.72 | 3.72 | 3.78 | 3.85 | 3.78 | 3.87 | 3.84 | 3.9 | 4.08 |
| Network Mean = | 33.9 | 33.9 | 33.9 | 33.9 | 33.9 | 33.9 | 33.9 | 33.9 | 33.9 | 33.9 | 33.9 | 33.9 |
| Natl. Mean = | 34.2 | 34.2 | 34.2 | 34.2 | 34.2 | 34.2 | 34.2 | 34.2 | 34.2 | 34.2 | 34.2 | 34.2 |
| % Hct > 33.0 | 77% | 75% | 77% | 78% | 79% | 78% | 59% | 70% | 79% | 80% | 84% | 84% |
| *% Network > 33.0 | 74% | 74% | 74% | 74% | 74% | 74% | 74% | 74% | 74% | 74% | 74% | 74% |
| % Natl. > 33.0 | 73% | 73% | 73% | 73% | 73% | 73% | 73% | 73% | 73% | 73% | 73% | 73% |



*Figures for 2000

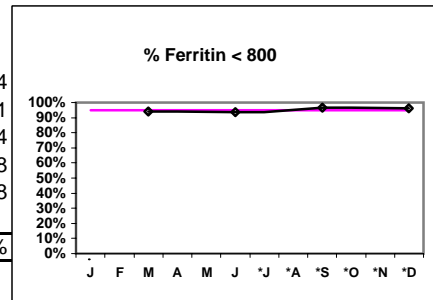
Iron Profile

| | | | | | | | | |
|------------------|--|-----|--|-----|--|-----|--|-----|
| # Ferritin | | 773 | | 815 | | 827 | | 844 |
| # Ferritin > 100 | | 702 | | 754 | | 744 | | 748 |
| Pop. Mean = | | 366 | | 409 | | 348 | | 334 |
| Std. Deviation = | | 256 | | 356 | | 385 | | 248 |
| *Network Mean = | | 428 | | 428 | | 428 | | 428 |
| Natl. Mean = | | | | | | | | |
| % Ferritin > 100 | | 91% | | 93% | | 90% | | 89% |
| *% Network > 100 | | 86% | | 86% | | 86% | | 86% |



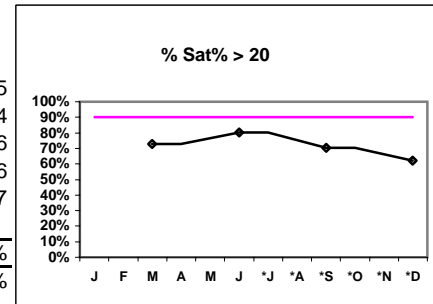
*Figures for 2000

| | | | | | | | | |
|------------------|--|-----|--|-----|--|-----|--|-----|
| # Ferritin | | 773 | | 815 | | 827 | | 844 |
| # Ferritin < 800 | | 726 | | 762 | | 798 | | 811 |
| Pop. Mean = | | 366 | | 409 | | 348 | | 334 |
| Std. Deviation = | | 256 | | 356 | | 385 | | 248 |
| *Network Mean = | | 428 | | 428 | | 428 | | 428 |
| Natl. Mean = | | | | | | | | |
| % Ferritin < 800 | | 94% | | 93% | | 96% | | 96% |



*Figures for 2000

| | | | | | | | | |
|------------------|--|------|--|------|--|------|--|------|
| # % Sat | | 772 | | 817 | | 829 | | 845 |
| # % Sat > 20 | | 563 | | 656 | | 584 | | 524 |
| Pop. Mean = | | 27.1 | | 29.9 | | 26.3 | | 24.6 |
| Std. Deviation = | | 11.4 | | 12.6 | | 10.1 | | 9.76 |
| *Network Mean = | | 27 | | 27 | | 27 | | 27 |
| Natl. Mean = | | | | | | | | |
| % Sat% > 20 | | 73% | | 80% | | 70% | | 62% |
| *% Network > 20 | | 72% | | 72% | | 72% | | 72% |



*Figures for 2000

*Methodology: a) Monthly values based on patient's monthly average of all values present for the month; b) Quarter values are average of all values for quarter; c) Values not averaged use last value present at months end.

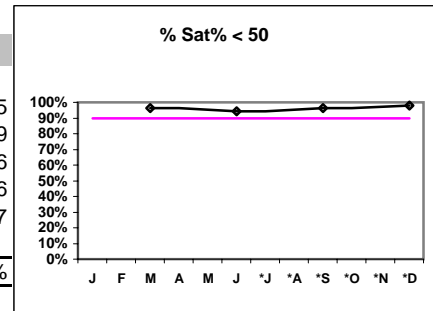
Northwest Kidney Centers - Consolidated Center Hemodialysis
Quality Assurance Reports (Excludes patients in first 6 months of treatment)
Through period ending Dec. 31, 2001

I,j - I.S. Dept.

V. ANEMIA - CONT.

| | J | F | M | A | M | J | *J | *A | *S | *O | *N | *D |
|------------------|---|---|------|---|---|------|----|----|------|----|----|------|
| # % Sat | | | 772 | | | 817 | | | 829 | | | 845 |
| # % Sat < 50 | | | 744 | | | 769 | | | 800 | | | 829 |
| Pop. Mean = | | | 27.1 | | | 29.9 | | | 26.3 | | | 24.6 |
| Std. Deviation = | | | 11.4 | | | 12.6 | | | 10.1 | | | 9.76 |
| *Network Mean = | | | 27 | | | 27 | | | 27 | | | 27 |
| Natl. Mean = | | | | | | | | | | | | |
| % Sat% < 50 | | | 96% | | | 94% | | | 97% | | | 98% |

*Figures for 2000



*Methodology: a) Monthly values based on patient's monthly average of all values present for the month; b) Quarter values are average of all values for quarter; c) Values not averaged use last value present at months end.

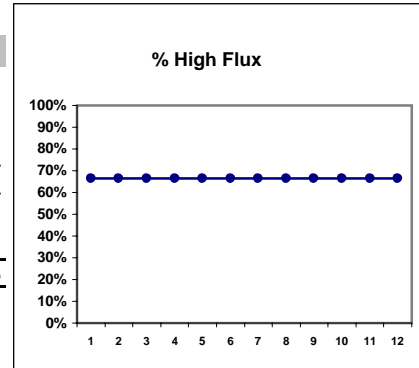
Northwest Kidney Centers - Consolidated Center Hemodialysis
Quality Assurance Reports (Excludes patients in first 6 months of treatment)
Through period ending Dec. 31, 2001

I.j - I.S. Dept.

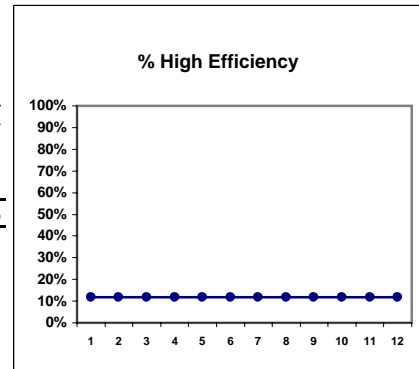
DO NOT USE THIS PAGE!!!

VI. OTHERS

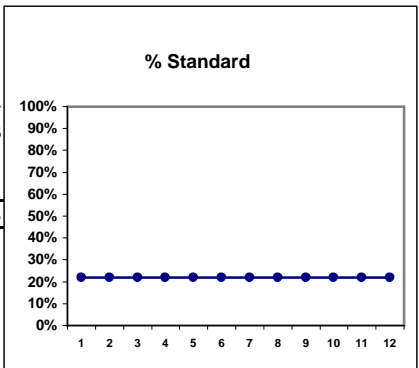
| | D | D | D | D | D | D | D | D | D | D | D | D |
|------------------------|-----|-----|-----|-----|-----|-----|-----|-----|-----|-----|-----|-----|
| Dialyzer ratios | | | | | | | | | | | | |
| # Dialyzers | 744 | 744 | 744 | 744 | 744 | 744 | 744 | 744 | 744 | 744 | 744 | 744 |
| # High Flux | 494 | 494 | 494 | 494 | 494 | 494 | 494 | 494 | 494 | 494 | 494 | 494 |
| Network % | | | | | | | | | | | | |
| Natl. % | | | | | | | | | | | | |
| % High Flux | 66% | 66% | 66% | 66% | 66% | 66% | 66% | 66% | 66% | 66% | 66% | 66% |



| | | | | | | | | | | | | |
|--------------------------|-----|-----|-----|-----|-----|-----|-----|-----|-----|-----|-----|-----|
| # Dialyzers | 744 | 744 | 744 | 744 | 744 | 744 | 744 | 744 | 744 | 744 | 744 | 744 |
| # High Efficiency | 87 | 87 | 87 | 87 | 87 | 87 | 87 | 87 | 87 | 87 | 87 | 87 |
| Network % | | | | | | | | | | | | |
| Natl. % | | | | | | | | | | | | |
| % High Efficiency | 12% | 12% | 12% | 12% | 12% | 12% | 12% | 12% | 12% | 12% | 12% | 12% |



| | | | | | | | | | | | | |
|--------------------|-----|-----|-----|-----|-----|-----|-----|-----|-----|-----|-----|-----|
| # Dialyzers | 744 | 744 | 744 | 744 | 744 | 744 | 744 | 744 | 744 | 744 | 744 | 744 |
| # Standard | 163 | 163 | 163 | 163 | 163 | 163 | 163 | 163 | 163 | 163 | 163 | 163 |
| Network % | | | | | | | | | | | | |
| Natl. % | | | | | | | | | | | | |
| % Standard | 22% | 22% | 22% | 22% | 22% | 22% | 22% | 22% | 22% | 22% | 22% | 22% |



*Methodology: a) Monthly values based on patient's monthly average of all values present for the month; b) Quarter values are average of all values for quarter; c) Values not averaged use last value present at months end.