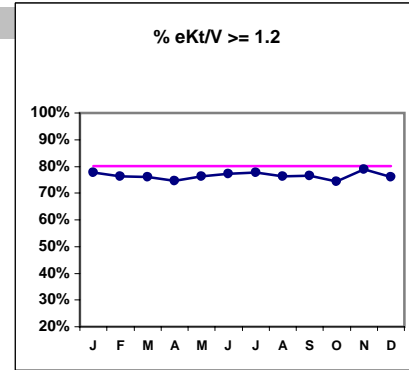


**Northwest Kidney Centers - Consolidated Center**  
 Quality Assurance Reports (Excludes patients in first 3 months of treatment - as of Dec. 31, 2002)  
 Through period ending Dec. 31, 2002

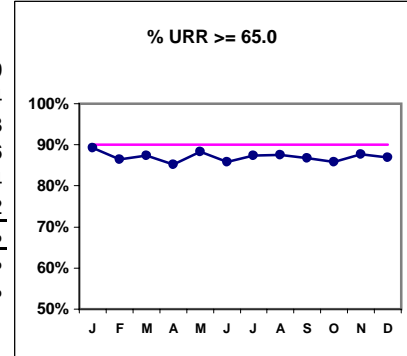
**I. ADEQUACY OF DIALYSIS**

	J	F	M	A	M	J	J	A	S	O	N	D
# eKt/V	837	831	838	833	839	844	856	840	872	887	882	957
# eKt/V >= 1.2	651	633	637	622	640	652	665	640	668	660	696	727
Pop. Mean =	1.39	1.36	1.38	1.35	1.37	1.39	1.40	1.36	1.37	1.36	1.39	1.37
Std. Deviation =	0.41	0.38	0.39	0.38	0.39	0.82	0.44	0.36	0.38	0.39	0.37	0.35
Network Mean =												
Natl. Mean =												
% eKt/V >= 1.2	78%	76%	76%	75%	76%	77%	78%	76%	77%	74%	79%	76%

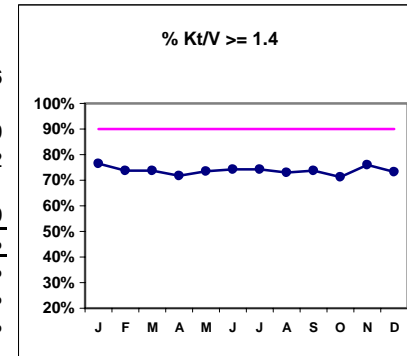


# URR	846	837	845	837	845	851	863	846	881	893	889	959
# URR >= 65.0	755	723	739	713	746	730	754	740	765	767	780	834
Pop. Mean =	73.0	72.4	72.8	72.2	72.5	72.6	72.9	72.4	72.4	72.3	73.2	72.8
Std. Deviation =	7.94	8.09	7.64	7.09	7.58	7.25	8.24	7.32	8.07	7.90	7.29	7.36
*Network Mean =	72.4	72.4	72.4	72.4	72.4	72.4	72.4	72.4	72.4	72.4	72.4	72.4
Natl. Mean =	68.2	68.2	68.2	68.2	68.2	68.2	68.2	68.2	68.2	68.2	68.2	68.2
% URR >= 65.0	89%	86%	87%	85%	88%	86%	87%	87%	87%	86%	88%	87%
*Network % > 65.0	87%	87%	87%	87%	87%	87%	87%	87%	87%	87%	87%	87%
*Natl. % > 65.0	82%	82%	82%	82%	82%	82%	82%	82%	82%	82%	82%	82%

\* Figures for 2000



# Kt/V	834	831	838	834	839	844	856	840	871	886	883	956
# Kt/V >= 1.4	638	612	618	598	617	627	636	614	642	632	670	701
Pop. Mean =	1.60	1.58	1.59	1.56	1.58	1.61	1.61	1.57	1.58	1.57	1.61	1.59
Std. Deviation =	0.49	0.45	0.46	0.44	0.46	0.96	0.52	0.42	0.45	0.47	0.44	0.42
Network Mean =	1.61	1.61	1.61	1.61	1.61	1.61	1.61	1.61	1.61	1.61	1.61	1.61
Natl. Mean 1999 =	1.40	1.40	1.40	1.40	1.40	1.40	1.40	1.40	1.40	1.40	1.40	1.40
% Kt/V >= 1.4	76%	74%	74%	72%	74%	74%	74%	73%	74%	71%	76%	73%
% Kt/V > 1.2	90%	89%	90%	88%	90%	89%	90%	89%	90%	88%	90%	90%
Network > 1.2 '00	93%	93%	93%	93%	93%	93%	93%	93%	93%	93%	93%	93%
Natl. % > 1.2 - 2001	91%	91%	91%	91%	91%	91%	91%	91%	91%	91%	91%	91%

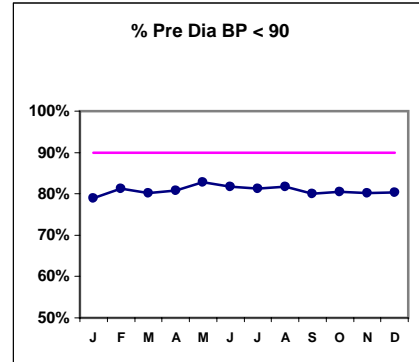


\*Methodology: a) Monthly values based on patient's monthly average of all values present for the month; b) Quarter values are average of all values for quarter; c) Values not averaged use last value present at months end.

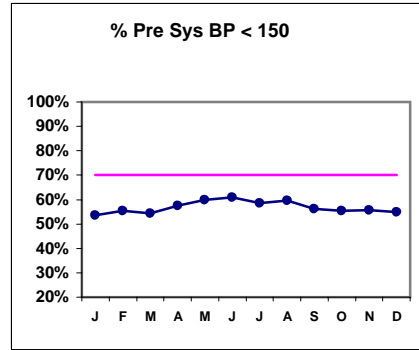
**Northwest Kidney Centers - Consolidated Center**  
 Quality Assurance Reports (Excludes patients in first 3 months of treatment - as of Dec. 31, 2002)  
 Through period ending Dec. 31, 2002

**I. ADEQUACY OF DIALYSIS - CONT.**

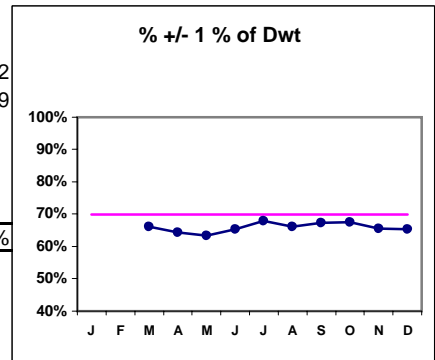
	J	F	M	A	M	J	J	A	S	O	N	D
<b>Blood Pressure Control (Pre)</b>												
# Pre Dia BP	850	857	856	852	857	862	873	874	898	900	909	971
# Pre Dia BP < 90	671	696	687	688	710	704	709	715	719	724	729	780
Pop. Mean =	79.9	79.5	80	80	78.9	78.8	78.8	78.9	79.4	79.5	79.6	80
Std. Deviation =	13	13.1	13.8	18.4	13	14.7	13.9	13.1	13.8	13.1	13.3	13.4
Network Mean =												
Natl. Mean =												
<b>% Pre Dia BP &lt; 90</b>	<b>79%</b>	<b>81%</b>	<b>80%</b>	<b>81%</b>	<b>83%</b>	<b>82%</b>	<b>81%</b>	<b>82%</b>	<b>80%</b>	<b>80%</b>	<b>80%</b>	<b>80%</b>



# Pre Sys BP	850	857	856	852	857	862	873	874	898	900	909	971
# Pre Sys BP < 150	456	474	466	491	514	526	512	522	505	499	506	534
Pop. Mean =	148	147	147	146	146	144	145	145	146	147	147	147
Std. Deviation =	21.3	21.3	21.2	21	21.1	21.7	21.4	21.1	21.1	20.4	21	20.6
Network Mean =												
Natl. Mean =												
<b>%Pre Sys BP &lt;150</b>	<b>54%</b>	<b>55%</b>	<b>54%</b>	<b>58%</b>	<b>60%</b>	<b>61%</b>	<b>59%</b>	<b>60%</b>	<b>56%</b>	<b>55%</b>	<b>56%</b>	<b>55%</b>



# Post/Dwt	851	848	854	861	871	873	891	897	901	962
# +/- 1% Dwt	562	546	541	563	592	577	600	605	591	629
<b>% +/- 1% of Dwt</b>	<b>66%</b>	<b>64%</b>	<b>63%</b>	<b>65%</b>	<b>68%</b>	<b>66%</b>	<b>67%</b>	<b>67%</b>	<b>66%</b>	<b>65%</b>

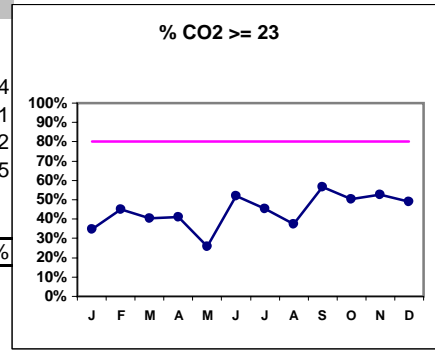


\*Methodology: a) Monthly values based on patient's monthly average of all values present for the month; b) Quarter values are average of all values for quarter; c) Values not averaged use last value present at months end.

**Northwest Kidney Centers - Consolidated Center**  
 Quality Assurance Reports (Excludes patients in first 3 months of treatment - as of Dec. 31, 2002)  
 Through period ending Dec. 31, 2002

**I. ADEQUACY OF DIALYSIS - CONT.**

	J	F	M	A	M	J	J	A	S	O	N	D
# CO2	846	847	854	849	856	857	871	863	895	898	899	964
# CO2 >= 23	295	381	346	350	221	445	395	324	507	453	474	471
Pop. Mean =	21	22	22	22	21	22	22	21	23	23	22	22
Std. Deviation =	3.13	3.53	2.79	2.99	2.76	3.47	3.04	3.69	3.15	3.01	3.62	3.45
Network Mean =												
Natl. Mean =												
% CO2 >= 23	35%	45%	41%	41%	26%	52%	45%	38%	57%	50%	53%	49%



\*Methodology: a) Monthly values based on patient's monthly average of all values present for the month; b) Quarter values are average of all values for quarter; c) Values not averaged use last value present at months end.

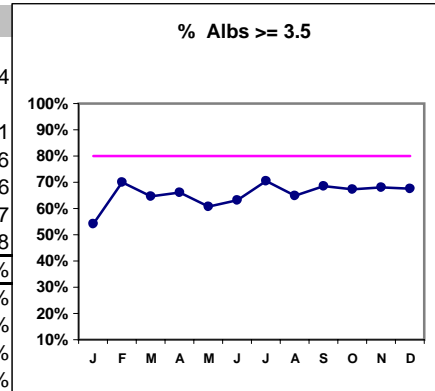
**Northwest Kidney Centers - Consolidated Center**  
 Quality Assurance Reports (Excludes patients in first 3 months of treatment - as of Dec. 31, 2002)  
 Through period ending Dec. 31, 2002

\*Albumin values use BCG method - as of July 2001

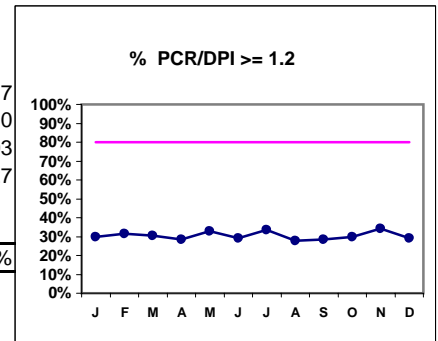
**II. NUTRITION**

	J	F	M	A	M	J	J	A	S	O	N	D
# Albumin	846	846	854	849	856	857	871	863	895	898	899	964
# Albumin >= 3.5	459	592	551	562	519	541	614	559	614	605	611	651
Pop. Mean =	3.4	3.6	3.5	3.6	3.5	3.5	3.6	3.6	3.6	3.6	3.6	3.6
Std. Deviation =	0.35	0.37	0.36	0.36	0.35	0.35	0.37	0.34	0.36	0.36	0.35	0.36
Network Mean =	3.7	3.7	3.7	3.7	3.7	3.7	3.7	3.7	3.7	3.7	3.7	3.7
Natl. Mean =	3.8	3.8	3.8	3.8	3.8	3.8	3.8	3.8	3.8	3.8	3.8	3.8
<b>% Alb &gt;= 3.5</b>	<b>54%</b>	<b>70%</b>	<b>65%</b>	<b>66%</b>	<b>61%</b>	<b>63%</b>	<b>70%</b>	<b>65%</b>	<b>69%</b>	<b>67%</b>	<b>68%</b>	<b>68%</b>
NKC % >= 3.7	28%	44%	36%	41%	34%	39%	46%	39%	44%	44%	44%	43%
NKC % >= 4.0	5%	13%	9%	11%	7%	10%	17%	11%	14%	14%	15%	13%
*Natl % >= 3.5-BCG	80%	80%	80%	80%	80%	80%	80%	80%	80%	80%	80%	80%
*Natl. % >= 4.0-BCG	29%	29%	29%	29%	29%	29%	29%	29%	29%	29%	29%	29%
*Netwk%>=3.5 BCG	79%	79%	79%	79%	79%	79%	79%	79%	79%	79%	79%	79%
*Netwk%>=4.0 BCG	29%	29%	29%	29%	29%	29%	29%	29%	29%	29%	29%	29%

\*Figures for 2000



# PCR/DPI	837	831	838	833	839	844	856	840	872	887	882	957
# PCR/DPI >= 1.2	249	261	256	236	276	245	287	233	248	265	301	280
Pop. Mean =	1.03	1.04	1.04	1.02	1.05	1.03	1.06	1.03	1.01	1.03	1.07	1.03
Std. Deviation =	0.29	0.27	0.27	0.25	0.27	0.27	0.27	0.26	0.26	0.26	0.29	0.27
Network Mean =												
Natl. Mean =												
<b>% PCR/DPI &gt;= 1.2</b>	<b>30%</b>	<b>31%</b>	<b>31%</b>	<b>28%</b>	<b>33%</b>	<b>29%</b>	<b>34%</b>	<b>28%</b>	<b>28%</b>	<b>30%</b>	<b>34%</b>	<b>29%</b>

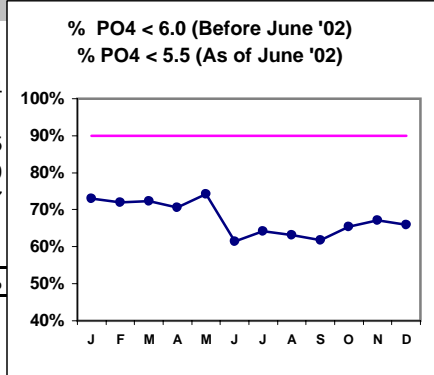


\*Methodology: a) Monthly values based on patient's monthly average of all values present for the month; b) Quarter values are average of all values for quarter; c) Values not averaged use last value present at months end.

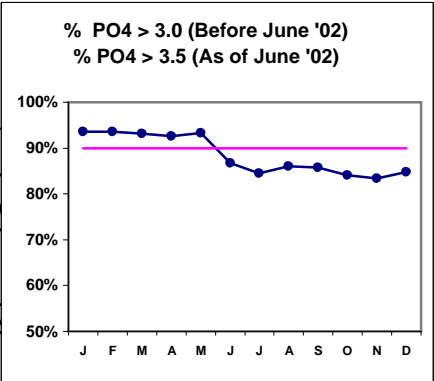
**Northwest Kidney Centers - Consolidated Center**  
 Quality Assurance Reports (Excludes patients in first 3 months of treatment - as of Dec. 31, 2002)  
 Through period ending Dec. 31, 2002

**III. OSTEODYSTROPHY**

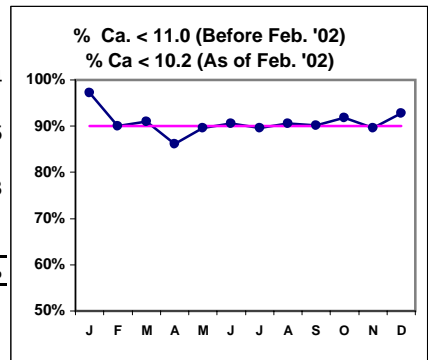
	J	F	M	A	M	J	J	A	S	O	N	D
# PO4	847	847	854	849	856	857	871	863	895	899	899	964
# PO4 < 6.0	619	610	618	599	635							
# PO4 < 5.5						527	560	545	553	588	604	635
Pop. Mean =	5.12	5.15	5.07	5.19	5.15	5.17	5.05	5.05	5.11	4.99	4.95	5.0
Std. Deviation	1.59	1.51	1.57	1.56	1.52	1.58	1.48	1.47	1.51	1.45	1.53	1.47
Network Mean =												
Natl. Mean =												
% PO4 < 6.0 or 5.5	73%	72%	72%	71%	74%	61%	64%	63%	62%	65%	67%	66%



# PO4	847	847	854	849	856	857	871	863	895	899	899	964
# PO4 > 3.0	792	793	795	786	799							
# PO4 > 3.5						743	736	742	768	756	750	817
Pop. Mean =	5.12	5.15	5.07	5.19	5.15	5.17	5.05	5.05	5.11	4.99	4.95	5.0
Std. Deviation	1.59	1.51	1.57	1.56	1.52	1.58	1.48	1.47	1.51	1.45	1.53	1.47
Network Mean =												
Natl. Mean =												
% PO4 > 3.0 or 3.5	94%	94%	93%	93%	93%	87%	85%	86%	86%	84%	83%	85%



# Calcium	847	847	854	849	856	857	871	863	895	899	899	964
# Calcium < 11.0	824											
# Calcium < 10.2		762	777	731	767	776	780	782	807	826	806	895
Pop. Mean =	9.2	9.2	9.1	9.3	9.3	9.2	9.3	9.2	9.2	9.2	9.3	9.1
Std. Deviation	0.8	0.83	0.81	0.78	0.76	0.77	0.76	0.76	0.78	0.78	0.77	0.8
Network Mean =												
Natl. Mean =												
% Ca < 11.0 or 10.2	97%	90%	91%	86%	90%	91%	90%	91%	90%	92%	90%	93%



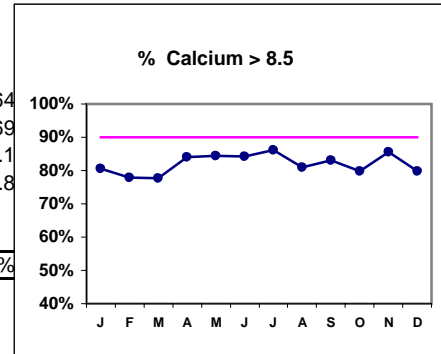
\*Methodology: a) Monthly values based on patient's monthly average of all values present for the month; b) Quarter values are average of all values for quarter; c) Values not averaged use last value present at months end.

**Northwest Kidney Centers - Consolidated Center**  
 Quality Assurance Reports (Excludes patients in first 3 months of treatment - as of Dec. 31, 2002)  
 Through period ending Dec. 31, 2002

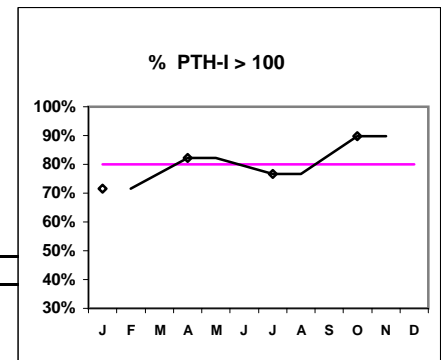
**III. OSTEODYSTROPHY - CONT.**

J F M A M J J A S O N D

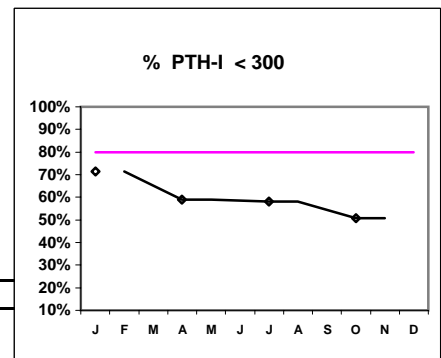
# Calcium	847	847	854	849	856	857	871	863	895	899	899	964
# Calcium > 8.5	682	660	664	714	722	722	750	698	744	718	770	769
Pop. Mean =	9.2	9.2	9.1	9.3	9.3	9.2	9.3	9.2	9.2	9.2	9.3	9.1
Std. Deviation =	0.8	0.83	0.81	0.78	0.76	0.77	0.76	0.76	0.78	0.78	0.77	0.8
Network Mean =												
Natl. Mean =												
<b>% Calcium &gt; 8.5</b>	<b>81%</b>	<b>78%</b>	<b>78%</b>	<b>84%</b>	<b>84%</b>	<b>84%</b>	<b>86%</b>	<b>81%</b>	<b>83%</b>	<b>80%</b>	<b>86%</b>	<b>80%</b>



# PTH-I	842	498	868	242
# PTH-I > 100	603	409	666	217
Pop. Mean =	267	351	355	405
Std. Deviation =	284	330	360	345
Network Mean =				
Natl. Mean =				
<b>% PTH-I &gt; 100</b>	<b>72%</b>	<b>82%</b>	<b>77%</b>	<b>90%</b>



# PTH-I	842	498	868	242
# PTH-I < 300	601	294	504	123
Pop. Mean =	267	351	355	405
Std. Deviation =	284	330	360	345
Network Mean =				
Natl. Mean =				
<b>% PTH-I &lt; 300</b>	<b>71%</b>	<b>59%</b>	<b>58%</b>	<b>51%</b>

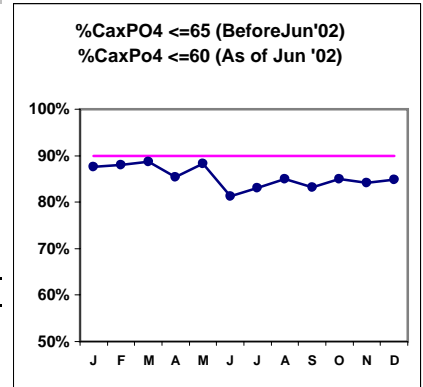


\*Methodology: a) Monthly values based on patient's monthly average of all values present for the month; b) Quarter values are average of all values for quarter; c) Values not averaged use last value present at months end.

**Northwest Kidney Centers - Consolidated Center**  
 Quality Assurance Reports (Excludes patients in first 3 months of treatment - as of Dec. 31, 2002)  
 Through period ending Dec. 31, 2002

**III. OSTEODYSTROPHY - CONT.**

	J	F	M	A	M	J	J	A	S	O	N	D
# Ca x PO4	847	847	854	849	856	857	871	863	895	899	899	964
# Ca x PO4 <= 65	742	745	757	725	756							
# Ca x PO4 <= 60						696	723	733	744	764	757	818
Pop. Mean =	47.0	47.1	46.3	48.4	47.6	47.6	46.8	46.2	47.0	45.7	45.9	45.8
Std. Deviation =	15.0	14.3	15.0	14.9	14.5	14.6	14.1	13.7	14.4	13.9	14.7	13.9
Network Mean =												
Natl. Mean =												
<b>CaxPO4 &lt;= 65or60</b>	<b>88%</b>	<b>88%</b>	<b>89%</b>	<b>85%</b>	<b>88%</b>	<b>81%</b>	<b>83%</b>	<b>85%</b>	<b>83%</b>	<b>85%</b>	<b>84%</b>	<b>85%</b>

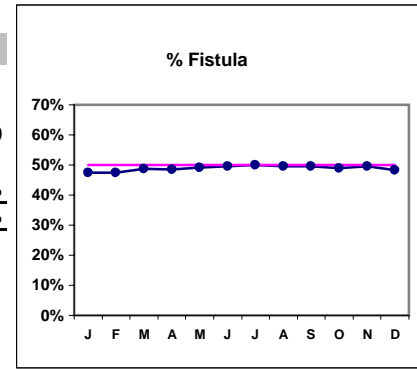


\*Methodology: a) Monthly values based on patient's monthly average of all values present for the month; b) Quarter values are average of all values for quarter; c) Values not averaged use last value present at months end.

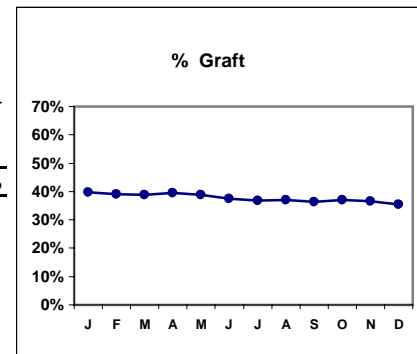
**Northwest Kidney Centers - Consolidated Center**  
**Quality Assurance Reports (Excludes patients in first 3 months of treatment - as of Dec. 31, 2002)**  
**Through period ending Dec. 31, 2002**

**IV. ACCESS**

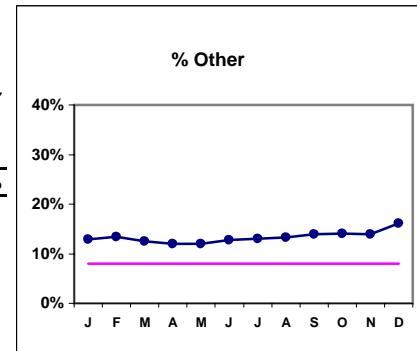
	J	F	M	A	M	J	J	A	S	O	N	D
# Access	850	857	856	852	857	862	873	874	898	900	908	971
# Fistula	403	407	417	414	422	428	437	434	446	441	450	470
Network %												
Natl. % - 2000	30%	30%	30%	30%	30%	30%	30%	30%	30%	30%	30%	30%
% Fistula	47%	47%	49%	49%	49%	50%	50%	50%	50%	49%	50%	48%



# Access	850	857	856	852	857	862	873	874	898	900	908	971
# Graft	337	335	332	336	332	324	322	324	327	333	332	344
Network %												
Natl. %												
% Graft	40%	39%	39%	39%	39%	38%	37%	37%	36%	37%	37%	35%



# Access	850	857	856	852	857	862	873	874	898	900	908	971
# Other	110	115	107	102	103	110	114	116	125	126	126	157
Network %												
Natl. %												
% Other	13%	13%	13%	12%	12%	13%	13%	13%	14%	14%	14%	16%



\*Methodology: a) Monthly values based on patient's monthly average of all values present for the month; b) Quarter values are average of all values for quarter; c) Values not averaged use last value present at months end.



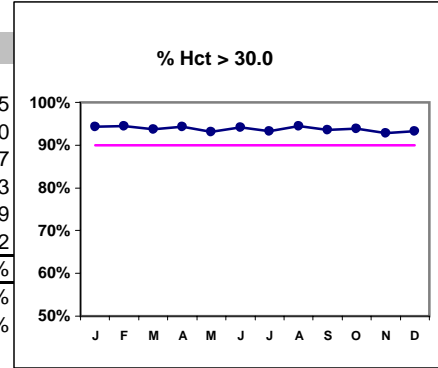
**Northwest Kidney Centers - Consolidated Center**  
 Quality Assurance Reports (Excludes patients in first 3 months of treatment - as of Dec. 31, 2002)  
 Through period ending Dec. 31, 2002

\*Hct. values use Coulter method - as of July 2001

**V. ANEMIA**

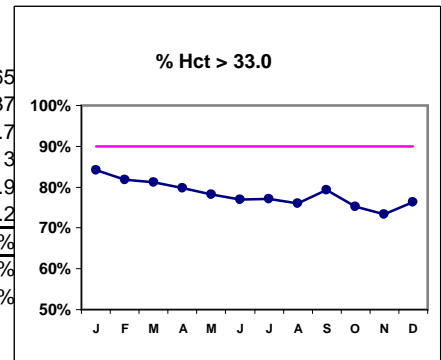
	J	F	M	A	M	J	J	A	S	O	N	D
# Hct	847	847	853	847	854	855	869	861	893	899	900	965
# Hct > 30.0	799	800	799	799	795	805	810	813	835	844	835	900
Pop. Mean =	36.3	36	35.8	35.8	35.6	35.6	35.7	35.6	35.8	35.5	35.3	35.7
Std. Deviation =	3.96	3.84	3.91	3.71	3.82	3.79	3.79	3.86	3.97	3.74	3.86	4.13
Network Mean =	33.9	33.9	33.9	33.9	33.9	33.9	33.9	33.9	33.9	33.9	33.9	33.9
Natl. Mean =	34.2	34.2	34.2	34.2	34.2	34.2	34.2	34.2	34.2	34.2	34.2	34.2
% Hct > 30.0	94%	94%	94%	94%	93%	94%	93%	94%	94%	94%	93%	93%
*% Network > 30.0	89%	89%	89%	89%	89%	89%	89%	89%	89%	89%	89%	89%
% Natl. > 30.0	79%	79%	79%	79%	79%	79%	79%	79%	79%	79%	79%	79%

\* Figures for 2000



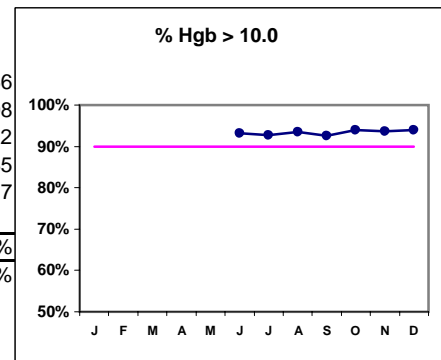
# Hct	847	847	853	847	854	855	869	861	893	899	900	965
# Hct > 33.0	713	693	692	676	668	658	670	655	708	677	660	737
Pop. Mean =	36.3	36	35.8	35.8	35.6	35.6	35.7	35.6	35.8	35.5	35.3	35.7
Std. Deviation =	3.96	3.84	3.91	3.71	3.82	3.79	3.79	3.86	3.97	3.74	3.86	4.13
Network Mean =	33.9	33.9	33.9	33.9	33.9	33.9	33.9	33.9	33.9	33.9	33.9	33.9
Natl. Mean =	34.2	34.2	34.2	34.2	34.2	34.2	34.2	34.2	34.2	34.2	34.2	34.2
% Hct > 33.0	84%	82%	81%	80%	78%	77%	77%	76%	79%	75%	73%	76%
*% Network > 33.0	74%	74%	74%	74%	74%	74%	74%	74%	74%	74%	74%	74%
% Natl. > 33.0	73%	73%	73%	73%	73%	73%	73%	73%	73%	73%	73%	73%

\* Figures for 2000



# Hgb						856	871	861	893	900	900	966
# Hgb > 10.0						798	807	805	827	845	843	908
Pop. Mean =						11.9	11.9	11.8	11.9	11.8	11.8	12
Std. Deviation =						1.27	1.26	1.25	1.26	1.21	1.25	1.35
*Network Mean =	11.7	11.7	11.7	11.7	11.7	11.7	11.7	11.7	11.7	11.7	11.7	11.7
Natl. Mean =												
% Hgb > 10.0						93%	93%	93%	93%	94%	94%	94%
*% Network >= 10	93%	93%	93%	93%	93%	93%	93%	93%	93%	93%	93%	93%

\* Figures for 2000

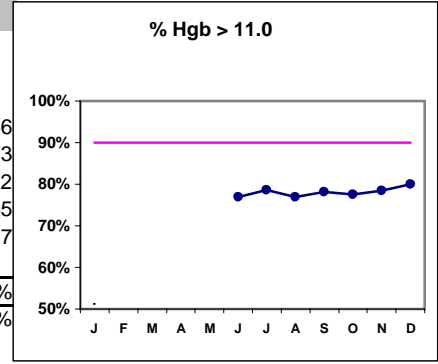


\*Methodology: a) Monthly values based on patient's monthly average of all values present for the month; b) Quarter values are average of all values for quarter; c) Values not averaged use last value present at months end.

**Northwest Kidney Centers - Consolidated Center**  
 Quality Assurance Reports (Excludes patients in first 3 months of treatment - as of Dec. 31, 2002)  
 Through period ending Dec. 31, 2002

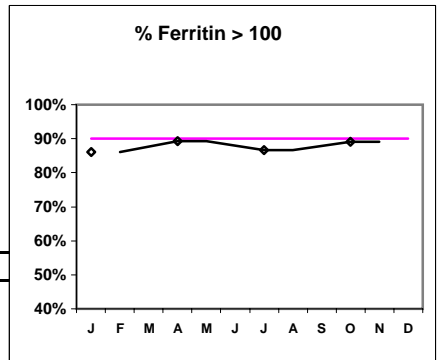
**V. ANEMIA - CONT.**

	J	F	M	A	M	J	J	A	S	O	N	D
# Hgb						856	871	861	893	900	900	966
# Hgb > 11.0						659	685	662	698	698	706	773
Pop. Mean =						11.9	11.9	11.8	11.9	11.8	11.8	12
Std. Deviation =						1.27	1.26	1.25	1.26	1.21	1.25	1.35
*Network Mean =	11.7	11.7	11.7	11.7	11.7	11.7	11.7	11.7	11.7	11.7	11.7	11.7
Natl. Mean =												
% Hgb > 11.0						77%	79%	77%	78%	78%	78%	80%
*% Network >= 11	76%	76%	76%	76%	76%	76%	76%	76%	76%	76%	76%	76%

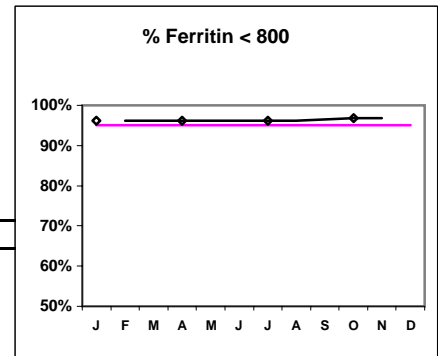


**Iron Profile**

# Ferritin	845	847	869	894
# Ferritin > 100	727	756	753	796
Pop. Mean =	336	348	344	345
Std. Deviation =	258	245	264	284
*Network Mean =	489	489	489	489
Natl. Mean =				
% Ferritin > 100	86%	89%	87%	89%
*% Network > 100	88%	88%	88%	88%



# Ferritin	845	847	869	894
# Ferritin < 800	813	814	836	865
Pop. Mean =	336	348	344	345
Std. Deviation =	258	245	264	284
*Network Mean =	489	489	489	489
Natl. Mean =				
% Ferritin < 800	96%	96%	96%	97%



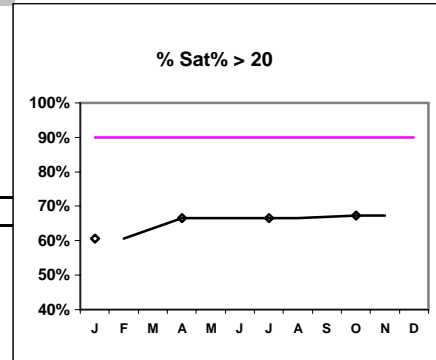
\*Methodology: a) Monthly values based on patient's monthly average of all values present for the month; b) Quarter values are average of all values for quarter; c) Values not averaged use last value present at months end.

**Northwest Kidney Centers - Consolidated Center**  
 Quality Assurance Reports (Excludes patients in first 3 months of treatment - as of Dec. 31, 2002)  
 Through period ending Dec. 31, 2002

**V. ANEMIA - CONT.**

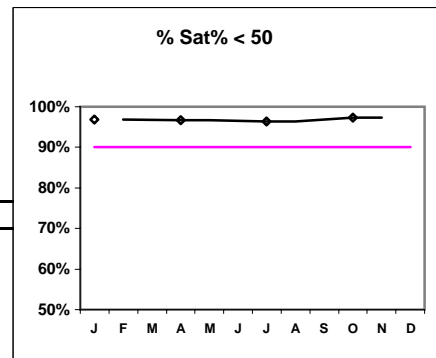
	J	F	M	A	M	J	J	A	S	O	N	D
# % Sat	847			848			870			891		
# % Sat > 20	513			564			579			600		
Pop. Mean =	24.5			26.1			25.9			25.6		
Std. Deviation =	10.2			10.6			11.1			10.5		
*Network Mean =	28			28			28			28		
Natl. Mean =												
% Sat% > 20	61%			67%			67%			67%		
***Network > 20	71%			71%			71%			71%		

\*Figures for 2000



# % Sat	847	848	870	891
# % Sat < 50	820	820	839	867
Pop. Mean =	24.5	26.1	25.9	25.6
Std. Deviation =	10.2	10.6	11.1	10.5
*Network Mean =	28	28	28	28
Natl. Mean =				
% Sat% < 50	97%	97%	96%	97%

\*Figures for 2000



\*Methodology: a) Monthly values based on patient's monthly average of all values present for the month; b) Quarter values are average of all values for quarter; c) Values not averaged use last value present at months end.