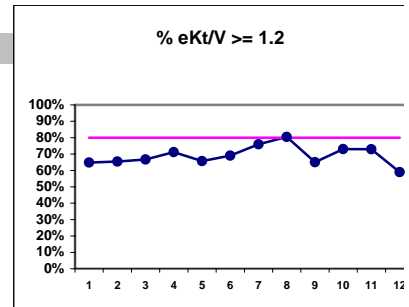


Mt. Rainier Kidney Center - Center Hemodialysis
 Quality Assurance Reports (Excludes patients in first 6 months of treatment)
 Through period ending Dec. 31, 1999

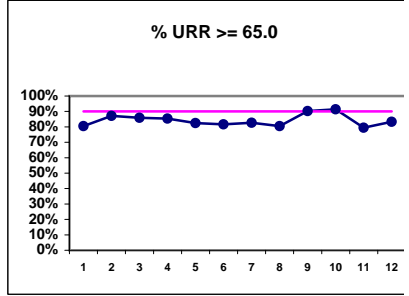
I.j - I.S. Dept.

I. ADEQUACY OF DIALYSIS

	J	F	M	A	M	J	J	A	S	O	N	D
# eKt/V	74	78	78	73	70	71	79	82	80	78	74	78
# eKt/V >= 1.2	48	51	52	52	46	49	60	66	52	57	54	46
Pop. Mean =	1.49	1.39	1.29	1.31	1.27	1.27	1.44	1.34	1.32	1.32	1.31	1.26
Std. Deviation =	0.64	0.42	0.21	0.26	0.25	0.37	0.73	0.22	0.51	0.43	0.26	0.25
Network Mean =												
Natl. Mean =												
% eKt/V >= 1.2	65%	65%	67%	71%	66%	69%	76%	80%	65%	73%	73%	59%

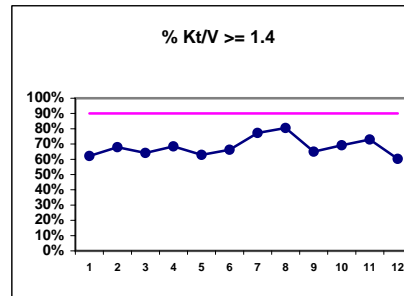


# URR	77	78	78	75	74	71	81	82	82	81	78	78
# URR >= 65.0	62	68	67	64	61	58	67	66	74	74	62	65
Pop. Mean =	73.8	72.5	71.3	71.7	70.1	70.1	70.6	70.1	73.3	72.0	70.3	71.2
Std. Deviation =	10.4	7.64	5.65	6.53	11.50	7.9	9.7	7.89	8.17	7.21	9.02	7.18
Network Mean =	74.0	74.0	74.0	74.0	74.0	74.0	74.0	74.0	74.0	74.0	74.0	74.0
*Natl. Mean =	68.0	68.0	68.0	68.0	68.0	68.0	68.0	68.0	68.0	68.0	68.0	68.0
% URR >= 65.0	81%	87%	86%	85%	82%	82%	83%	80%	90%	91%	79%	83%
*Natl. % > 65.0	72%	72%	72%	72%	72%	72%	72%	72%	72%	72%	72%	72%



* Figures for 1997

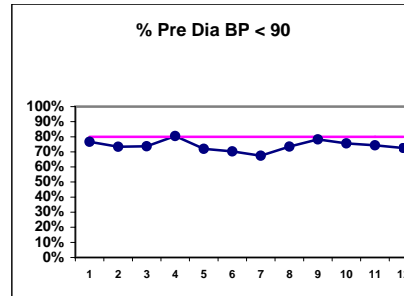
# Kt/V	74	78	78	73	70	71	79	82	80	78	74	78
# Kt/V >= 1.4	46	53	50	50	44	47	61	66	52	54	54	47
Pop. Mean =	1.74	1.63	1.50	1.52	1.47	1.48	1.67	1.59	1.54	1.53	1.52	1.46
Std. Deviation =	0.78	0.52	0.25	0.30	0.30	0.44	0.85	0.26	0.62	0.51	0.30	0.30
Network Mean =												
*Natl. Mean =	1.39	1.39	1.39	1.39	1.39	1.39	1.39	1.39	1.39	1.39	1.39	1.39
% Kt/V >= 1.4	62%	68%	64%	68%	63%	66%	77%	80%	65%	69%	73%	60%
% Kt/V > 1.2	84%	85%	90%	88%	86%	85%	89%	93%	84%	86%	89%	87%
*Network % > 1.2	79%	79%	79%	79%	79%	79%	79%	79%	79%	79%	79%	79%
*Natl. % > 1.2	78%	78%	78%	78%	78%	78%	78%	78%	78%	78%	78%	78%



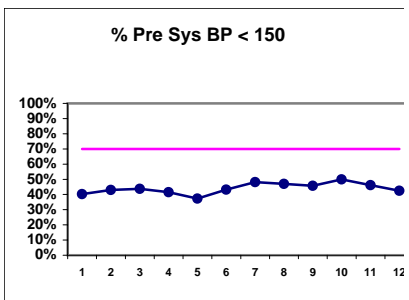
* Figures for 1997

Blood Pressure Control (Pre)

# Pre Dia BP	77	79	80	77	75	74	83	83	83	82	78	80
# Pre Dia BP < 90	59	58	59	62	54	52	56	61	65	62	58	58
Pop. Mean =	83	82	82	81	83	83	83	81	82	82	82	82
Std. Deviation =	12.5	12.3	12.1	11.6	14.7	14.7	13.1	12.0	11.9	11.4	12.5	12.0
Network Mean =												
Natl. Mean =												
% Pre Dia BP < 90	77%	73%	74%	81%	72%	70%	67%	73%	78%	76%	74%	73%



# Pre Sys BP	77	79	80	77	75	74	83	83	83	82	78	80
# Pre Sys BP < 150	31	34	35	32	28	32	40	39	38	41	36	34
Pop. Mean =	154	154	152	152	153	153	153	151	153	152	152	152
Std. Deviation =	16.8	16.2	16.9	18.3	20.8	21.1	19.8	22.6	22.7	22.1	21.3	22.2
Network Mean =												
Natl. Mean =												
% Pre Sys BP < 150	40%	43%	44%	42%	37%	43%	48%	47%	46%	50%	46%	43%



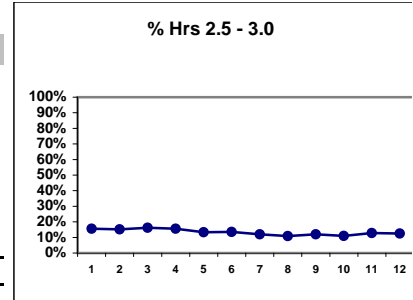
*Methodology: a) Monthly values based on patient's monthly average of all values present for the month; b) Quarter values are average of all values for quarter; c) Values not averaged use last value present at months end.

Mt. Rainier Kidney Center - Center Hemodialysis
Quality Assurance Reports (Excludes patients in first 6 months of treatment)
Through period ending Dec. 31, 1999

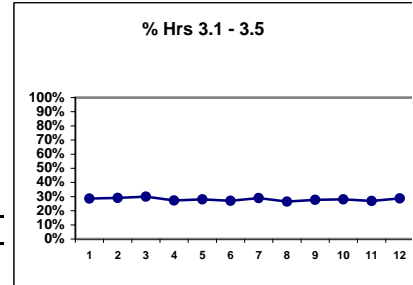
I,j - I.S. Dept.

I. ADEQUACY OF DIALYSIS - CONT.

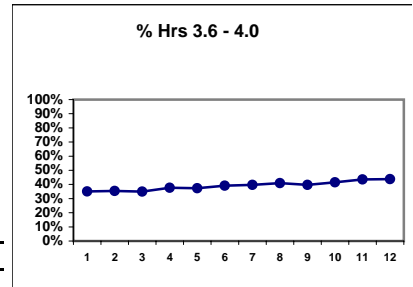
	J	F	M	A	M	J	J	A	S	O	N	D
# Dialysis Hrs	77	79	80	77	75	74	83	83	83	82	78	80
# Hrs. 2.5 - 3.0	12	12	13	12	10	10	10	9	10	9	10	10
Pop. Mean =	3.7	3.8	3.7	3.7	3.7	3.8	3.8	3.7	3.8	4.1	4.1	3.7
Std. Deviation =	0.66	0.84	0.50	0.49	0.48	0.48	0.49	0.61	0.49	3.20	3.03	0.47
Network Mean =												
Natl. Mean =												
% Hrs. 2.5 - 3.0	16%	15%	16%	16%	13%	14%	12%	11%	12%	11%	13%	13%



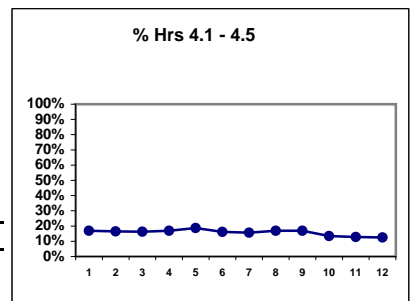
# Dialysis Hrs	77	79	80	77	75	74	83	83	83	82	78	80
# Hrs 3.1 - 3.5	22	23	24	21	21	20	24	22	23	23	21	23
Pop. Mean =	3.7	3.8	3.7	3.7	3.7	3.8	3.8	3.7	3.8	4.1	4.1	3.7
Std. Deviation =	0.66	0.84	0.50	0.49	0.48	0.48	0.49	0.61	0.49	3.20	3.03	0.47
Network Mean =												
Natl. Mean =												
% Hrs 3.1 - 3.5	29%	29%	30%	27%	28%	27%	29%	27%	28%	28%	27%	29%



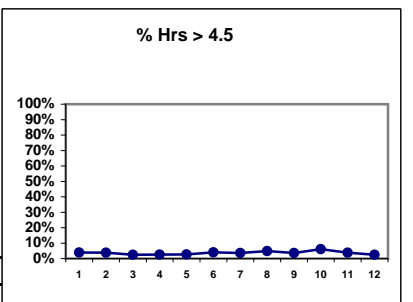
# Dialysis Hrs	77	79	80	77	75	74	83	83	83	82	78	80
# Hrs 3.6 - 4.0	27	28	28	29	28	29	33	34	33	34	34	35
Pop. Mean =	3.7	3.8	3.7	3.7	3.7	3.8	3.8	3.7	3.8	4.1	4.1	3.7
Std. Deviation =	0.66	0.84	0.50	0.49	0.48	0.48	0.49	0.61	0.49	3.20	3.03	0.47
Network Mean =												
Natl. Mean =												
% Hrs 3.6 - 4.0	35%	35%	35%	38%	37%	39%	40%	41%	40%	41%	44%	44%



# Dialysis Hrs	77	79	80	77	75	74	83	83	83	82	78	80
# Hrs 4.1 - 4.5	13	13	13	13	14	12	13	14	14	11	10	10
Pop. Mean =	3.7	3.8	3.7	3.7	3.7	3.8	3.8	3.7	3.8	4.1	4.1	3.7
Std. Deviation =	0.66	0.84	0.50	0.49	0.48	0.48	0.49	0.61	0.49	3.20	3.03	0.47
Network Mean =												
Natl. Mean =												
% Hrs 4.1 - 4.5	17%	16%	16%	17%	19%	16%	16%	17%	17%	13%	13%	13%



# Dialysis Hrs	77	79	80	77	75	74	83	83	83	82	78	80
# Hrs > 4.5	3	3	2	2	2	3	3	4	3	5	3	2
Pop. Mean =	3.7	3.8	3.7	3.7	3.7	3.8	3.8	3.7	3.8	4.1	4.1	3.7
Std. Deviation =	0.66	0.84	0.50	0.49	0.48	0.48	0.49	0.61	0.49	3.20	3.03	0.47
Network Mean =												
Natl. Mean =												
% Hrs > 4.5	4%	4%	3%	3%	3%	4%	4%	5%	4%	6%	4%	3%



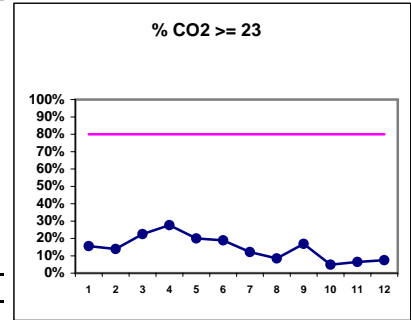
*Methodology: a) Monthly values based on patient's monthly average of all values present for the month; b) Quarter values are average of all values for quarter; c) Values not averaged use last value present at months end.

Mt. Rainier Kidney Center - Center Hemodialysis
Quality Assurance Reports (Excludes patients in first 6 months of treatment)
Through period ending Dec. 31, 1999

I,j - I.S. Dept.

I. ADEQUACY OF DIALYSIS - CONT.

	J	F	M	A	M	J	J	A	S	O	N	D
# CO2	77	79	80	76	75	74	82	83	83	82	78	80
# CO2 >= 23	12	11	18	21	15	14	10	7	14	4	5	6
Pop. Mean =	20	21	21	21	20	20	20	20	21	18	20	19
Std. Deviation =	2.36	2.73	2.42	2.55	2.60	2.22	3.45	2.06	2.46	2.32	1.95	2.21
Network Mean =												
Natl. Mean =												
% CO2 >= 23	16%	14%	23%	28%	20%	19%	12%	8%	17%	5%	6%	8%



(Note: Jan & Feb Albumin values are adjusted by +0.2)

*Albumin values use BCP method)

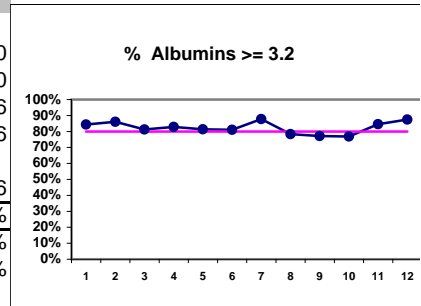
*Methodology: a) Monthly values based on patient's monthly average of all values present for the month; b) Quarter values are average of all values for quarter; c) Values not averaged use last value present at months end.

Mt. Rainier Kidney Center - Center Hemodialysis
Quality Assurance Reports (Excludes patients in first 6 months of treatment)
Through period ending Dec. 31, 1999

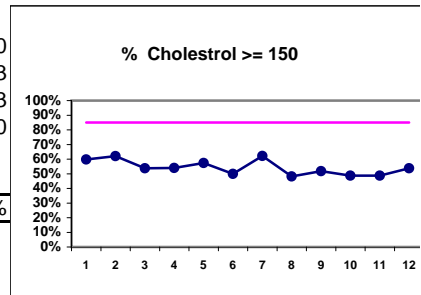
I,j - I.S. Dept.

II. NUTRITION

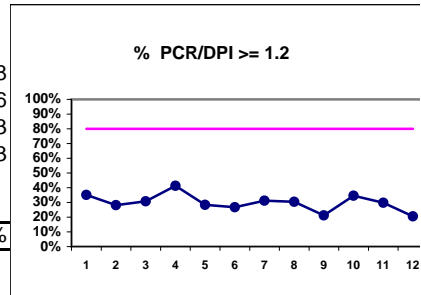
	J	F	M	A	M	J	J	A	S	O	N	D
# Albumin	77	79	80	76	75	74	82	83	83	82	78	80
# Albumin >= 3.2	65	68	65	63	61	60	72	65	64	63	66	70
Pop. Mean =	3.5	3.5	3.4	3.5	3.5	3.4	3.5	3.5	3.4	3.4	3.5	3.6
Std. Deviation =	0.34	0.39	0.37	0.36	0.37	0.35	0.40	0.45	0.37	0.37	0.39	0.36
Network Mean =												
Natl. Mean =	3.6	3.6	3.6	3.6	3.6	3.6	3.6	3.6	3.6	3.6	3.6	3.6
% Albumin >= 3.2	84%	86%	81%	83%	81%	81%	88%	78%	77%	77%	85%	88%
*Network % >= 3.2	76%	76%	76%	76%	76%	76%	76%	76%	76%	76%	76%	76%
*Natl. % >= 3.2	83%	83%	83%	83%	83%	83%	83%	83%	83%	83%	83%	83%



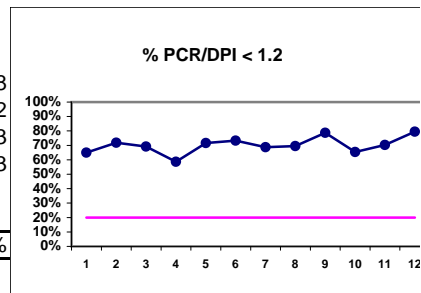
# Cholesterol	77	79	80	76	75	74	82	83	83	82	78	80
# Chol. >= 150	46	49	43	41	43	37	51	40	43	40	38	43
Pop. Mean =	163	168	157	158	154	153	161	151	152	152	153	153
Std. Deviation =	44.4	44.9	35.9	34.3	36.1	37.7	45.0	37.5	39.6	38.9	38.1	39.0
Network Mean =												
Natl. Mean =												
% Chol. >= 150	60%	62%	54%	54%	57%	50%	62%	48%	52%	49%	49%	54%



# PCR/DPI	77	78	78	75	74	71	80	82	80	78	74	78
# PCR/DPI >= 1.2	27	22	24	31	21	19	25	25	17	27	22	16
Pop. Mean =	1.09	1.08	1.06	1.11	1.06	1.02	1.08	1.07	0.98	1.09	1.07	1.03
Std. Deviation =	0.30	0.20	0.20	0.22	0.21	0.20	0.23	0.22	0.23	0.23	0.23	0.23
Network Mean =												
Natl. Mean =												
% PCR/DPI >= 1.2	35%	28%	31%	41%	28%	27%	31%	30%	21%	35%	30%	21%



# PCR/DPI	77	78	78	75	74	71	80	82	80	78	74	78
# PCR/DPI < 1.2	50	56	54	44	53	52	55	57	63	51	52	62
Pop. Mean =	1.09	1.08	1.06	1.11	1.06	1.02	1.08	1.07	0.98	1.09	1.07	1.03
Std. Deviation =	0.30	0.20	0.20	0.22	0.21	0.20	0.23	0.22	0.23	0.23	0.23	0.23
Network Mean =												
Natl. Mean =												
% PCR/DPI < 1.2	65%	72%	69%	59%	72%	73%	69%	70%	79%	65%	70%	79%



III. OSTEODYSTROPHY

% Calcium < 11.0

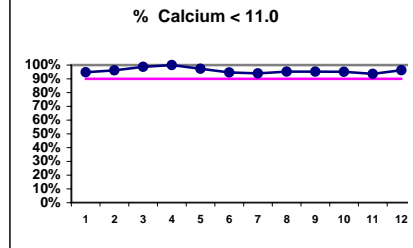
*Methodology: a) Monthly values based on patient's monthly average of all values present for the month; b) Quarter values are average of all values for quarter; c) Values not averaged use last value present at months end.

Mt. Rainier Kidney Center - Center Hemodialysis
Quality Assurance Reports (Excludes patients in first 6 months of treatment)

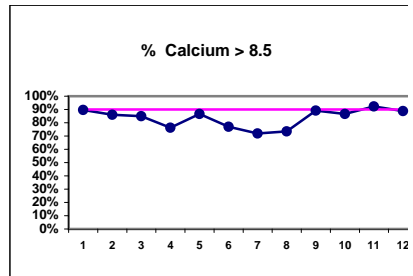
I.j - I.S. Dept.

Through period ending Dec. 31, 1999

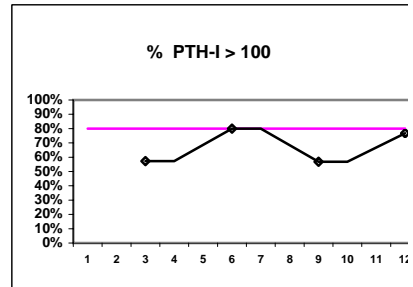
	J	F	M	A	M	J	J	A	S	O	N	D
# Calcium	77	79	80	76	75	74	82	83	83	82	78	80
# Calcium < 11.0	73	76	79	76	73	70	77	79	79	78	73	77
Pop. Mean =	9.5	9.6	9.3	9.2	9.3	9.2	9.2	9.1	9.5	9.5	9.5	9.4
Std. Deviation =	0.85	0.94	0.80	0.81	0.85	0.94	0.94	0.88	0.84	0.84	0.79	0.87
Network Mean =												
Natl. Mean =												
% Calcium < 11.0	95%	96%	99%	100%	97%	95%	94%	95%	95%	95%	94%	96%



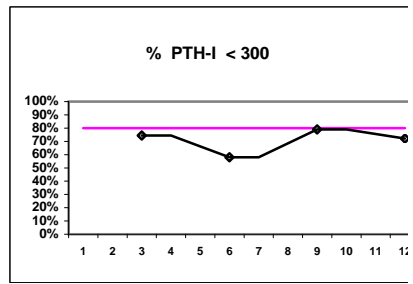
# Calcium	77	79	80	76	75	74	82	83	83	82	78	80
# Calcium > 8.5	69	68	68	58	65	57	59	61	74	71	72	71
Pop. Mean =	9.5	9.6	9.3	9.2	9.3	9.2	9.2	9.1	9.5	9.5	9.5	9.4
Std. Deviation =	0.85	0.94	0.80	0.81	0.85	0.94	0.94	0.88	0.84	0.84	0.79	0.87
Network Mean =												
Natl. Mean =												
% Calcium > 8.5	90%	86%	85%	76%	87%	77%	72%	73%	89%	87%	92%	89%



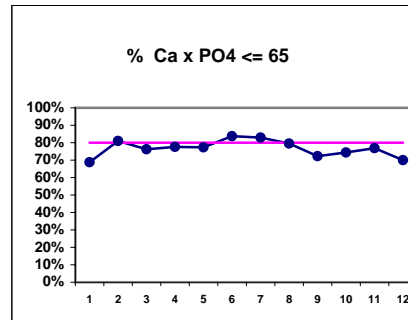
# PTH-I		82		50		81		43
# PTH-I > 100		47		40		46		33
Pop. Mean =		219		223		203		138
Std. Deviation =		256		268		248		208
Network Mean =								
Natl. Mean =								
% PTH-I > 100		57%		80%		57%		77%



# PTH-I		82		50		81		43
# PTH-I < 300		61		29		64		31
Pop. Mean =		219		223		203		138
Std. Deviation =		256		268		248		208
Network Mean =								
Natl. Mean =								
% PTH-I < 300		74%		58%		79%		72%

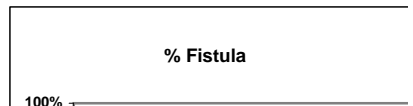


# Ca x PO4	77	79	80	76	75	74	82	83	83	82	78	80
# Ca x PO4 <= 65	53	64	61	59	58	62	68	66	60	61	60	56
Pop. Mean =	60.0	53.8	53.8	56.3	53.3	52.9	51.8	52.7	55.7	56.4	52.7	54.9
Std. Deviation =	16.4	15.9	18.1	16.3	16.0	16.4	14.1	14.7	14.7	17.2	14.4	15.6
Network Mean =												
Natl. Mean =												
% Ca x PO4 <= 65	69%	81%	76%	78%	77%	84%	83%	80%	72%	74%	77%	70%



IV. ACCESS

J F M A M J J A S O N D



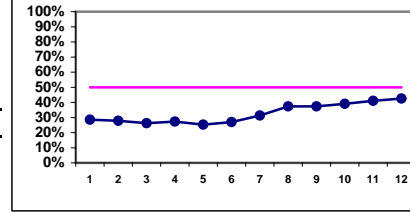
*Methodology: a) Monthly values based on patient's monthly average of all values present for the month; b) Quarter values are average of all values for quarter; c) Values not averaged use last value present at months end.

Mt. Rainier Kidney Center - Center Hemodialysis
Quality Assurance Reports (Excludes patients in first 6 months of treatment)

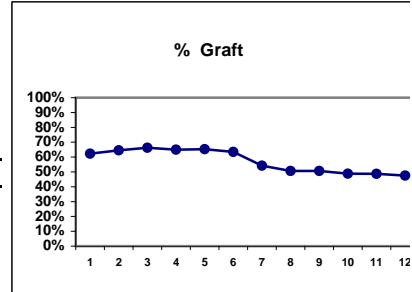
I.j - I.S. Dept.

Through period ending Dec. 31, 1999

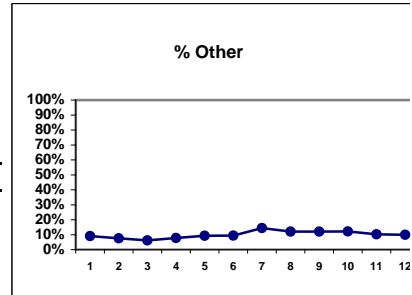
# Access	77	79	80	77	75	74	83	83	83	82	78	80
# Fistula	22	22	21	21	19	20	26	31	31	32	32	34
Network %												
Natl. %												
% Fistula	29%	28%	26%	27%	25%	27%	31%	37%	37%	39%	41%	43%



# Access	77	79	80	77	75	74	83	83	83	82	78	80
# Graft	48	51	53	50	49	47	45	42	42	40	38	38
Network %												
Natl. %												
% Graft	62%	65%	66%	65%	65%	64%	54%	51%	51%	49%	49%	48%

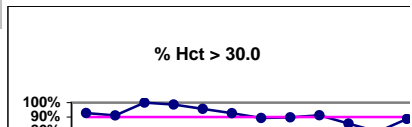


# Access	77	79	80	77	75	74	83	83	83	82	78	80
# Other	7	6	5	6	7	7	12	10	10	10	8	8
Network %												
Natl. %												
% Other	9%	8%	6%	8%	9%	9%	14%	12%	12%	12%	10%	10%



V. ANEMIA

	J	F	M	A	M	J	J	A	S	O	N	D
# Hct	69	78	78	76	69	68	75	78	79	75	69	79
# Hct > 30.0	64	71	78	75	66	63	67	70	72	64	55	70



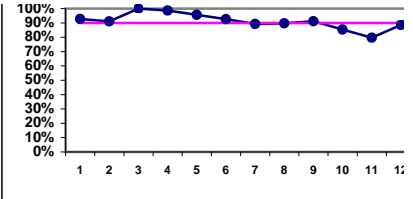
*Methodology: a) Monthly values based on patient's monthly average of all values present for the month; b) Quarter values are average of all values for quarter; c) Values not averaged use last value present at months end.

Mt. Rainier Kidney Center - Center Hemodialysis
Quality Assurance Reports (Excludes patients in first 6 months of treatment)

I.j - I.S. Dept.

Through period ending Dec. 31, 1999

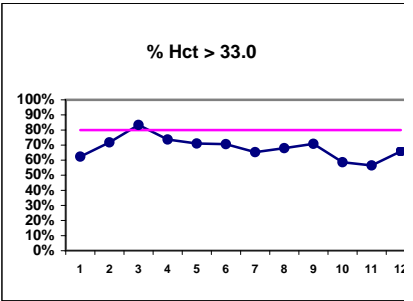
Pop. Mean =	35.0	34.6	36.4	35.3	35.4	35.3	34.8	34.9	35.2	34.3	34.7	34.8
Std. Deviation =	4.44	3.61	3.84	3.68	4.20	4.31	4.15	3.58	4.13	4.25	4.58	3.86
Network Mean =												
*Natl. Mean =	33.2	33.2	33.2	33.2	33.2	33.2	33.2	33.2	33.2	33.2	33.2	33.2
% Hct > 30.0	93%	91%	100%	99%	96%	93%	89%	90%	91%	85%	80%	89%
*% Network > 30.0	85%	85%	85%	85%	85%	85%	85%	85%	85%	85%	85%	85%
*% Natl. > 30.0	79%	79%	79%	79%	79%	79%	79%	79%	79%	79%	79%	79%



* Figures for 1997

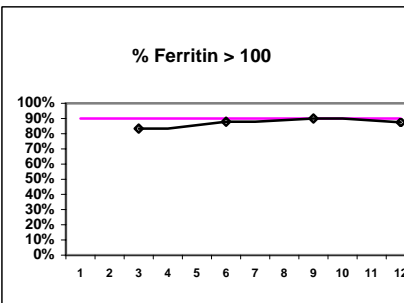
# Hct	69	78	78	76	69	68	75	78	79	75	69	79
# Hct > 33.0	43	56	65	56	49	48	49	53	56	44	39	52
Pop. Mean =	35.0	34.6	36.4	35.3	35.4	35.3	34.8	34.9	35.2	34.3	34.7	34.8
Std. Deviation =	4.44	3.61	3.84	3.68	4.20	4.31	4.15	3.58	4.13	4.25	4.58	3.86
Network Mean =												
*Natl. Mean =	33.2	33.2	33.2	33.2	33.2	33.2	33.2	33.2	33.2	33.2	33.2	33.2
% Hct > 33.0	62%	72%	83%	74%	71%	71%	65%	68%	71%	59%	57%	66%
*% Network > 33.0	64%	64%	64%	64%	64%	64%	64%	64%	64%	64%	64%	64%
*% Natl. > 33.0	56%	56%	56%	56%	56%	56%	56%	56%	56%	56%	56%	56%

*Figures for 1997

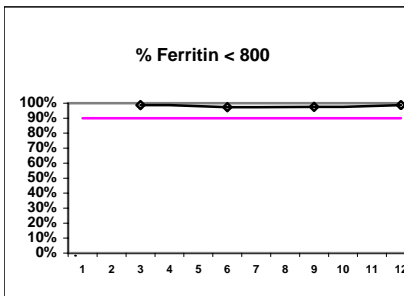


Iron Profile

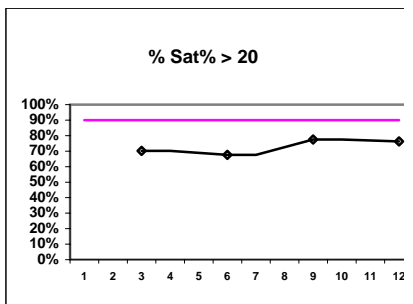
# Ferritin		78		74		80		80
# Ferritin > 100		65		65		72		70
Pop. Mean =		279		298		275		273
Std. Deviation =		215		234		179		158
Network Mean =								
Natl. Mean =								
% Ferritin > 100		83%		88%		90%		88%



# Ferritin		78		74		80		80
# Ferritin < 800		77		72		78		79
Pop. Mean =		279		298		275		273
Std. Deviation =		215		234		179		158
Network Mean =								
Natl. Mean =								
% Ferritin < 800		99%		97%		98%		99%

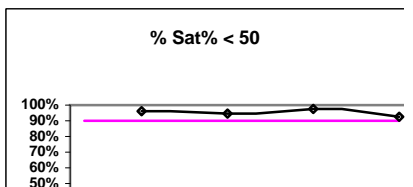


# % Sat		77		74		80		80
# % Sat > 20		54		50		62		61
Pop. Mean =		26.3		27.4		26.9		27.9
Std. Deviation =		10.5		11.3		11.6		11.5
Network Mean =								
Natl. Mean =								
% Sat% > 20		70%		68%		78%		76%



V. ANEMIA - CONT.

	J	F	M	A	M	J	J	A	S	O	N	D
# % Sat			77			74			80			80
# % Sat < 50			74			70			78			74
Pop. Mean =			26.3			27.4			26.9			27.9



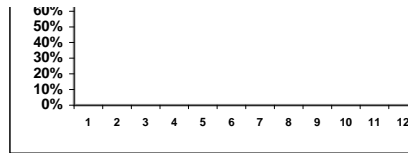
*Methodology: a) Monthly values based on patient's monthly average of all values present for the month; b) Quarter values are average of all values for quarter; c) Values not averaged use last value present at months end.

Mt. Rainier Kidney Center - Center Hemodialysis
Quality Assurance Reports (Excludes patients in first 6 months of treatment)

I,j - I.S. Dept.

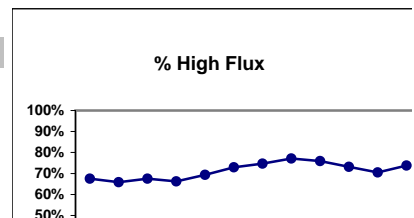
Through period ending Dec. 31, 1999

Std. Deviation =	10.5	11.3	11.6	11.5
Network Mean =				
Natl. Mean =				
% Sat% < 50	96%	95%	98%	93%



VI. OTHERS

	J	F	M	A	M	J	J	A	S	O	N	D
Dialyzer ratios												
# Dialyzers	77	79	80	77	75	74	83	83	83	82	78	80
# High Flux	52	52	54	51	52	54	62	64	63	60	55	59



*Methodology: a) Monthly values based on patient's monthly average of all values present for the month; b) Quarter values are average of all values for quarter; c) Values not averaged use last value present at months end.

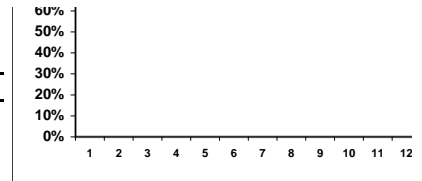
Mt. Rainier Kidney Center - Center Hemodialysis
Quality Assurance Reports (Excludes patients in first 6 months of treatment)
Through period ending Dec. 31, 1999

I.j - I.S. Dept.

Network %

Natl. %

% High Flux	68%	66%	68%	66%	69%	73%	75%	77%	76%	73%	71%	74%
--------------------	-----	-----	-----	-----	-----	-----	-----	-----	-----	-----	-----	-----

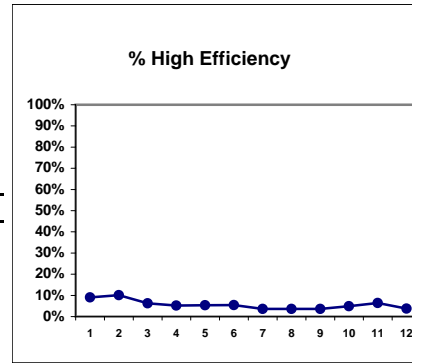


# Dialyzers	77	79	80	77	75	74	83	83	83	82	78	80
# High Efficiency	7	8	5	4	4	4	3	3	3	4	5	3

Network %

Natl. %

% High Efficiency	9%	10%	6%	5%	5%	5%	4%	4%	4%	5%	6%	4%
--------------------------	----	-----	----	----	----	----	----	----	----	----	----	----

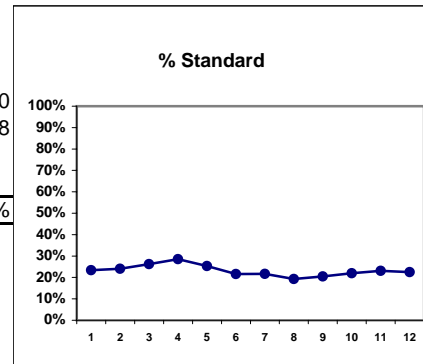


# Dialyzers	77	79	80	77	75	74	83	83	83	82	78	80
# Standard	18	19	21	22	19	16	18	16	17	18	18	18

Network %

Natl. %

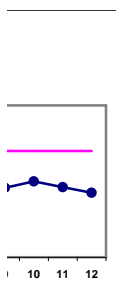
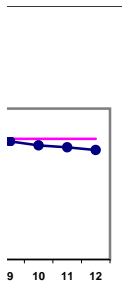
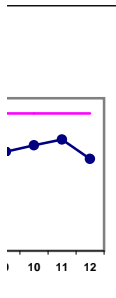
% Standard	23%	24%	26%	29%	25%	22%	22%	19%	20%	22%	23%	23%
-------------------	-----	-----	-----	-----	-----	-----	-----	-----	-----	-----	-----	-----



*Methodology: a) Monthly values based on patient's monthly average of all values present for the month; b) Quarter values are average of all values for quarter; c) Values not averaged use last value present at months end.

Mt. Rainier Kidney Center - Center Hemodialysis
Quality Assurance Reports (Excludes patients in first 6 months of treatment)
Through period ending Dec. 31, 1999

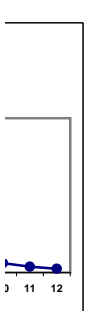
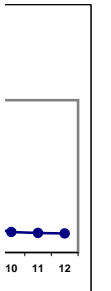
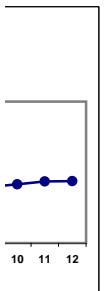
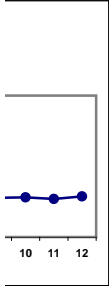
I,j - I.S. Dept.



***Methodology: a) Monthly values based on patient's monthly average of all values present for the month; b) Quarter values are average of all values for quarter; c) Values not averaged use last value present at months end.**

Mt. Rainier Kidney Center - Center Hemodialysis
Quality Assurance Reports (Excludes patients in first 6 months of treatment)
Through period ending Dec. 31, 1999

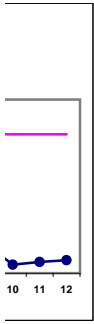
I,j - I.S. Dept.



*Methodology: a) Monthly values based on patient's monthly average of all values present for the month; b) Quarter values are average of all values for quarter; c) Values not averaged use last value present at months end.

Mt. Rainier Kidney Center - Center Hemodialysis
Quality Assurance Reports (Excludes patients in first 6 months of treatment)
Through period ending Dec. 31, 1999

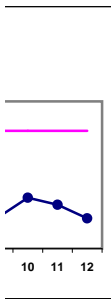
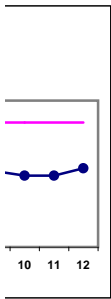
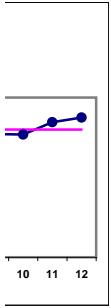
I,j - I.S. Dept.



*Methodology: a) Monthly values based on patient's monthly average of all values present for the month; b) Quarter values are average of all values for quarter; c) Values not averaged use last value present at months end.

Mt. Rainier Kidney Center - Center Hemodialysis
Quality Assurance Reports (Excludes patients in first 6 months of treatment)
Through period ending Dec. 31, 1999

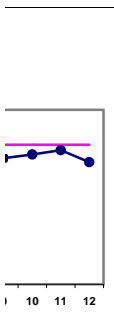
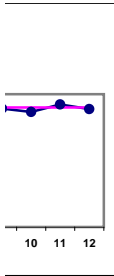
I,j - I.S. Dept.



*Methodology: a) Monthly values based on patient's monthly average of all values present for the month; b) Quarter values are average of all values for quarter; c) Values not averaged use last value present at months end.

Mt. Rainier Kidney Center - Center Hemodialysis
Quality Assurance Reports (Excludes patients in first 6 months of treatment)
Through period ending Dec. 31, 1999

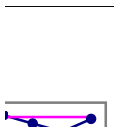
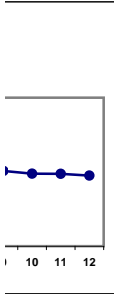
I,j - I.S. Dept.



*Methodology: a) Monthly values based on patient's monthly average of all values present for the month; b) Quarter values are average of all values for quarter; c) Values not averaged use last value present at months end.

Mt. Rainier Kidney Center - Center Hemodialysis
Quality Assurance Reports (Excludes patients in first 6 months of treatment)
Through period ending Dec. 31, 1999

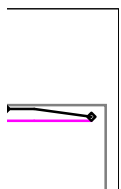
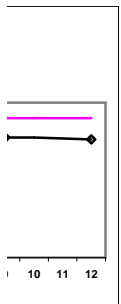
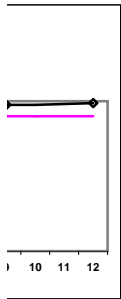
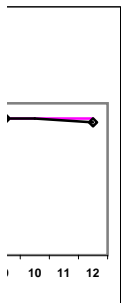
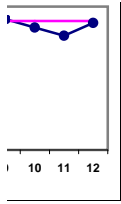
I,j - I.S. Dept.



***Methodology:** a) Monthly values based on patient's monthly average of all values present for the month; b) Quarter values are average of all values for quarter; c) Values not averaged use last value present at months end.

Mt. Rainier Kidney Center - Center Hemodialysis
Quality Assurance Reports (Excludes patients in first 6 months of treatment)
Through period ending Dec. 31, 1999

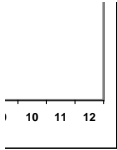
I,j - I.S. Dept.



***Methodology:** a) Monthly values based on patient's monthly average of all values present for the month; b) Quarter values are average of all values for quarter; c) Values not averaged use last value present at months end.

Mt. Rainier Kidney Center - Center Hemodialysis
Quality Assurance Reports (Excludes patients in first 6 months of treatment)
Through period ending Dec. 31, 1999

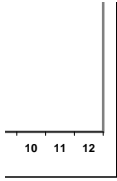
I,j - I.S. Dept.



***Methodology:** a) Monthly values based on patient's monthly average of all values present for the month; b) Quarter values are average of all values for quarter; c) Values not averaged use last value present at months end.

Mt. Rainier Kidney Center - Center Hemodialysis
Quality Assurance Reports (Excludes patients in first 6 months of treatment)
Through period ending Dec. 31, 1999

I,j - I.S. Dept.



*Methodology: a) Monthly values based on patient's monthly average of all values present for the month; b) Quarter values are average of all values for quarter; c) Values not averaged use last value present at months end.