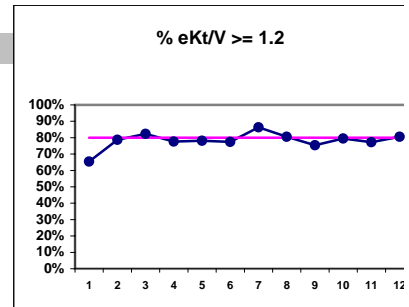


Lake Washington Kidney Center - Center Hemodialysis
Quality Assurance Reports (Excludes patients in first 6 months of treatment)
Through period ending Dec. 31, 1999

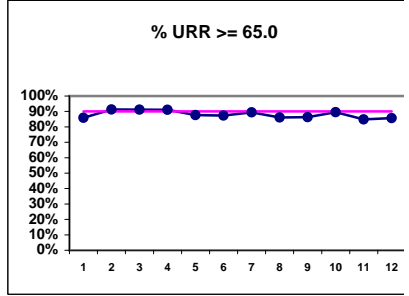
I.j - I.S. Dept.

I. ADEQUACY OF DIALYSIS

	J	F	M	A	M	J	J	A	S	O	N	D
# eKt/V	78	80	79	67	73	71	66	72	73	73	79	77
# eKt/V >= 1.2	51	63	65	52	57	55	57	58	55	58	61	62
Pop. Mean =	1.31	1.40	1.39	1.36	1.36	1.32	1.42	1.40	1.35	1.38	1.38	1.36
Std. Deviation =	0.23	0.24	0.21	0.28	0.21	0.24	0.27	0.26	0.25	0.22	0.52	0.22
Network Mean =												
Natl. Mean =												
% eKt/V >= 1.2	65%	79%	82%	78%	78%	77%	86%	81%	75%	79%	77%	81%

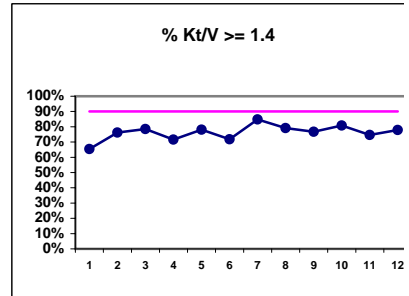


# URR	78	80	79	67	73	71	66	72	73	76	79	77
# URR >= 65.0	67	73	72	61	64	62	59	62	63	68	67	66
Pop. Mean =	71.7	73.7	73.7	72.9	73.9	71.9	73.4	71.6	73.4	73.8	73.5	73.5
Std. Deviation =	6.51	6.46	6.00	7.72	6.00	9.24	5.73	9.40	7.73	7.10	6.98	6.47
Network Mean =	74.0	74.0	74.0	74.0	74.0	74.0	74.0	74.0	74.0	74.0	74.0	74.0
*Natl. Mean =	68.0	68.0	68.0	68.0	68.0	68.0	68.0	68.0	68.0	68.0	68.0	68.0
% URR >= 65.0	86%	91%	91%	91%	88%	87%	89%	86%	86%	89%	85%	86%
*Natl. % > 65.0	72%	72%	72%	72%	72%	72%	72%	72%	72%	72%	72%	72%



* Figures for 1997

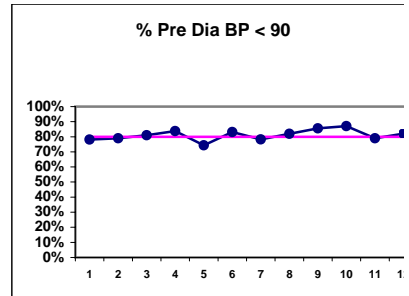
# Kt/V	78	80	79	67	73	71	66	72	73	73	79	77
# Kt/V >= 1.4	51	61	62	48	57	51	56	57	56	59	59	60
Pop. Mean =	1.52	1.63	1.61	1.59	1.56	1.53	1.65	1.63	1.58	1.60	1.61	1.58
Std. Deviation =	0.28	0.29	0.26	0.34	0.25	0.29	0.33	0.32	0.29	0.27	0.62	0.26
Network Mean =												
*Natl. Mean =	1.39	1.39	1.39	1.39	1.39	1.39	1.39	1.39	1.39	1.39	1.39	1.39
% Kt/V >= 1.4	65%	76%	78%	72%	78%	72%	85%	79%	77%	81%	75%	78%
% Kt/V > 1.2	89%	90%	92%	94%	93%	92%	92%	90%	89%	93%	90%	94%
*Network % > 1.2	79%	79%	79%	79%	79%	79%	79%	79%	79%	79%	79%	79%
*Natl. % > 1.2	78%	78%	78%	78%	78%	78%	78%	78%	78%	78%	78%	78%



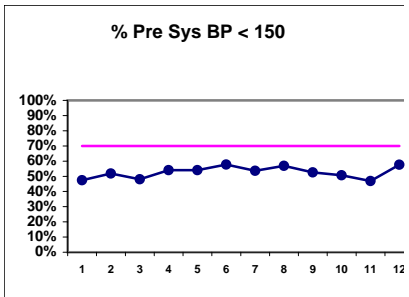
* Figures for 1997

Blood Pressure Control (Pre)

# Pre Dia BP	78	81	79	74	74	71	69	72	76	77	81	78
# Pre Dia BP < 90	61	64	64	62	55	59	54	59	65	67	64	64
Pop. Mean =	81	82	80	79	81	79	78	80	80	80	80	80
Std. Deviation =	14.1	11.4	12.2	12.1	13.1	12.2	12.0	12.9	11.1	11.3	11.4	12.1
Network Mean =												
Natl. Mean =												
% Pre Dia BP < 90	78%	79%	81%	84%	74%	83%	78%	82%	86%	87%	79%	82%



# Pre Sys BP	78	81	79	74	74	71	69	72	76	77	81	78
# Pre Sys BP < 150	37	42	38	40	40	41	37	41	40	39	38	45
Pop. Mean =	148	149	149	148	152	147	146	147	148	149	149	147
Std. Deviation =	21.9	21.7	21.2	20.8	22.5	20.4	20.3	18.5	18.4	18.3	18.2	18.2
Network Mean =												
Natl. Mean =												
% Pre Sys BP < 150	47%	52%	48%	54%	54%	58%	54%	57%	53%	51%	47%	58%



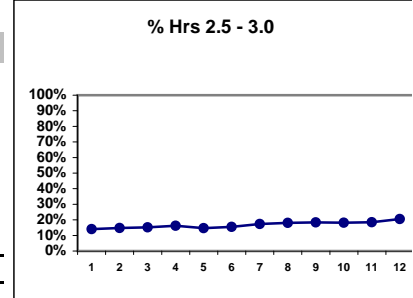
*Methodology: a) Monthly values based on patient's monthly average of all values present for the month; b) Quarter values are average of all values for quarter; c) Values not averaged use last value present at months end.

Lake Washington Kidney Center - Center Hemodialysis
Quality Assurance Reports (Excludes patients in first 6 months of treatment)
Through period ending Dec. 31, 1999

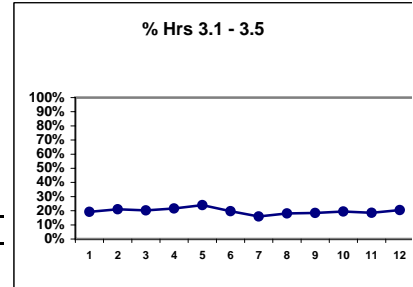
I,j - I.S. Dept.

I. ADEQUACY OF DIALYSIS - CONT.

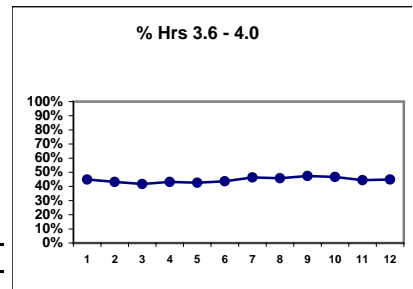
	J	F	M	A	M	J	J	A	S	O	N	D
# Dialysis Hrs	78	81	79	74	75	71	69	72	76	77	81	78
# Hrs. 2.5 - 3.0	11	12	12	12	11	11	12	13	14	14	15	16
Pop. Mean =	3.8	3.9	3.8	3.8	3.8	3.8	3.9	3.8	3.8	3.8	4.5	3.7
Std. Deviation =	0.66	0.67	0.49	0.52	0.52	0.53	0.61	0.54	0.57	0.53	4.87	0.54
Network Mean =												
Natl. Mean =												
% Hrs. 2.5 - 3.0	14%	15%	15%	16%	15%	15%	17%	18%	18%	18%	19%	21%



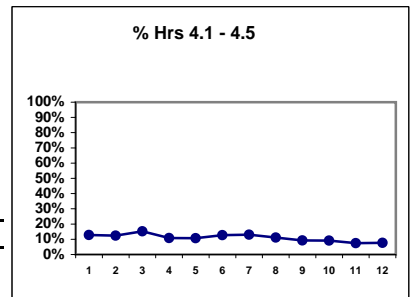
# Dialysis Hrs	78	81	79	74	75	71	69	72	76	77	81	78
# Hrs 3.1 - 3.5	15	17	16	16	18	14	11	13	14	15	15	16
Pop. Mean =	3.8	3.9	3.8	3.8	3.8	3.8	3.9	3.8	3.8	3.8	4.5	3.7
Std. Deviation =	0.66	0.67	0.49	0.52	0.52	0.53	0.61	0.54	0.57	0.53	4.87	0.54
Network Mean =												
Natl. Mean =												
% Hrs 3.1 - 3.5	19%	21%	20%	22%	24%	20%	16%	18%	18%	19%	19%	21%



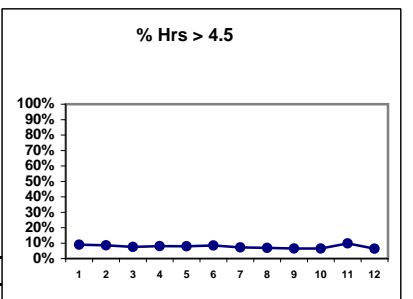
# Dialysis Hrs	78	81	79	74	75	71	69	72	76	77	81	78
# Hrs 3.6 - 4.0	35	35	33	32	32	31	32	33	36	36	36	35
Pop. Mean =	3.8	3.9	3.8	3.8	3.8	3.8	3.9	3.8	3.8	3.8	4.5	3.7
Std. Deviation =	0.66	0.67	0.49	0.52	0.52	0.53	0.61	0.54	0.57	0.53	4.87	0.54
Network Mean =												
Natl. Mean =												
% Hrs 3.6 - 4.0	45%	43%	42%	43%	43%	44%	46%	46%	47%	47%	44%	45%



# Dialysis Hrs	78	81	79	74	75	71	69	72	76	77	81	78
# Hrs 4.1 - 4.5	10	10	12	8	8	9	9	8	7	7	6	6
Pop. Mean =	3.8	3.9	3.8	3.8	3.8	3.8	3.9	3.8	3.8	3.8	4.5	3.7
Std. Deviation =	0.66	0.67	0.49	0.52	0.52	0.53	0.61	0.54	0.57	0.53	4.87	0.54
Network Mean =												
Natl. Mean =												
% Hrs 4.1 - 4.5	13%	12%	15%	11%	11%	13%	13%	11%	9%	9%	7%	8%



# Dialysis Hrs	78	81	79	74	75	71	69	72	76	77	81	78
# Hrs > 4.5	7	7	6	6	6	6	5	5	5	5	8	5
Pop. Mean =	3.8	3.9	3.8	3.8	3.8	3.8	3.9	3.8	3.8	3.8	4.5	3.7
Std. Deviation =	0.66	0.67	0.49	0.52	0.52	0.53	0.61	0.54	0.57	0.53	4.87	0.54
Network Mean =												
Natl. Mean =												
% Hrs > 4.5	9%	9%	8%	8%	8%	8%	7%	7%	7%	6%	10%	6%



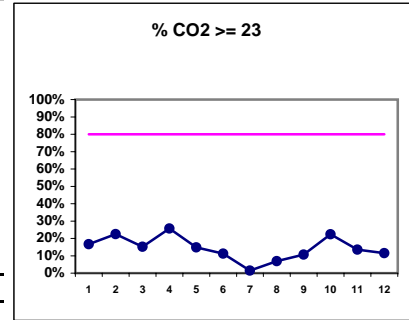
*Methodology: a) Monthly values based on patient's monthly average of all values present for the month; b) Quarter values are average of all values for quarter; c) Values not averaged use last value present at months end.

Lake Washington Kidney Center - Center Hemodialysis
Quality Assurance Reports (Excludes patients in first 6 months of treatment)
Through period ending Dec. 31, 1999

I,j - I.S. Dept.

I. ADEQUACY OF DIALYSIS - CONT.

	J	F	M	A	M	J	J	A	S	O	N	D
# CO2	78	80	79	74	74	71	69	72	75	76	81	78
# CO2 >= 23	13	18	12	19	11	8	1	5	8	17	11	9
Pop. Mean =	21	20	20	21	20	21	19	19	20	20	20	20
Std. Deviation =	2.00	3.21	2.12	2.71	2.99	2.28	2.03	2.62	3.40	3.59	2.92	2.53
Network Mean =												
Natl. Mean =												
% CO2 >= 23	17%	23%	15%	26%	15%	11%	1%	7%	11%	22%	14%	12%



(Note: Jan & Feb Albumin values are adjusted by +0.2)

*Albumin values use BCP method)

*Methodology: a) Monthly values based on patient's monthly average of all values present for the month; b) Quarter values are average of all values for quarter; c) Values not averaged use last value present at months end.

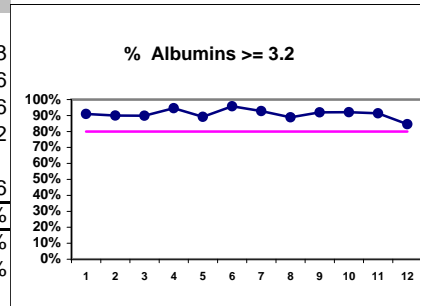
Lake Washington Kidney Center - Center Hemodialysis
Quality Assurance Reports (Excludes patients in first 6 months of treatment)
Through period ending Dec. 31, 1999

I,j - I.S. Dept.

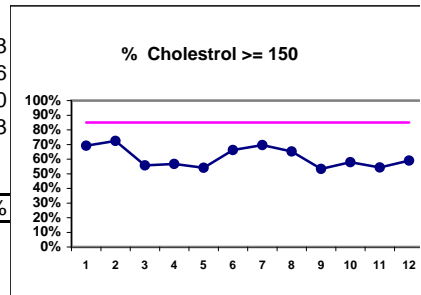
II. NUTRITION

	J	F	M	A	M	J	J	A	S	O	N	D
# Albumin	78	80	79	74	74	71	69	72	75	76	81	78
# Albumin >= 3.2	71	72	71	70	66	68	64	64	69	70	74	66
Pop. Mean =	3.6	3.6	3.5	3.6	3.6	3.6	3.6	3.7	3.6	3.6	3.6	3.6
Std. Deviation =	0.33	0.32	0.32	0.35	0.32	0.30	0.31	0.39	0.36	0.39	0.36	0.42
Network Mean =												
Natl. Mean =	3.6	3.6	3.6	3.6	3.6	3.6	3.6	3.6	3.6	3.6	3.6	3.6
% Albumin >= 3.2	91%	90%	90%	95%	89%	96%	93%	89%	92%	92%	91%	85%
*Network % >= 3.2	76%	76%	76%	76%	76%	76%	76%	76%	76%	76%	76%	76%
*Natl. % >= 3.2	83%	83%	83%	83%	83%	83%	83%	83%	83%	83%	83%	83%

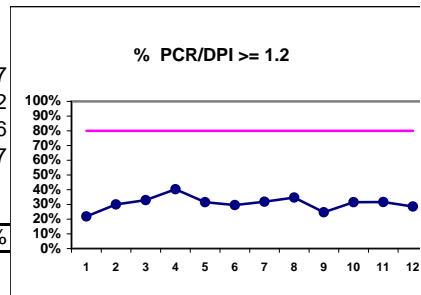
*Figures for 1997



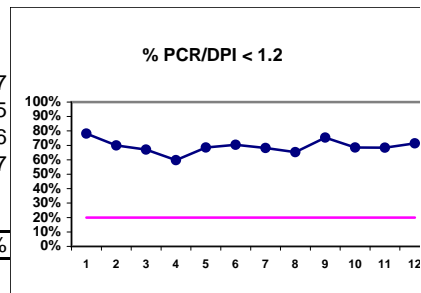
# Cholesterol	78	80	79	74	74	71	69	72	75	76	81	78
# Chol. >= 150	54	58	44	42	40	47	48	47	40	44	44	46
Pop. Mean =	172	174	157	160	162	165	165	163	156	162	157	160
Std. Deviation =	39.4	59.3	35.0	34.4	35.9	35.2	32.0	33.9	39.6	40.8	34.6	38.8
Network Mean =												
Natl. Mean =												
% Chol. >= 150	69%	73%	56%	57%	54%	66%	70%	65%	53%	58%	54%	59%



# PCR/DPI	78	80	79	67	73	71	66	72	73	73	79	77
# PCR/DPI >= 1.2	17	24	26	27	23	21	21	25	18	23	25	22
Pop. Mean =	0.99	1.04	1.06	1.14	1.05	1.04	1.07	1.08	0.98	1.11	1.05	1.06
Std. Deviation =	0.23	0.25	0.25	0.33	0.25	0.23	0.26	0.29	0.25	0.30	0.24	0.27
Network Mean =												
Natl. Mean =												
% PCR/DPI >= 1.2	22%	30%	33%	40%	32%	30%	32%	35%	25%	32%	32%	29%



# PCR/DPI	78	80	79	67	73	71	66	72	73	73	79	77
# PCR/DPI < 1.2	61	56	53	40	50	50	45	47	55	50	54	55
Pop. Mean =	0.99	1.04	1.06	1.14	1.05	1.04	1.07	1.08	0.98	1.11	1.05	1.06
Std. Deviation =	0.23	0.25	0.25	0.33	0.25	0.23	0.26	0.29	0.25	0.30	0.24	0.27
Network Mean =												
Natl. Mean =												
% PCR/DPI < 1.2	78%	70%	67%	60%	68%	70%	68%	65%	75%	68%	68%	71%



III. OSTEODYSTROPHY

% Calcium < 11.0

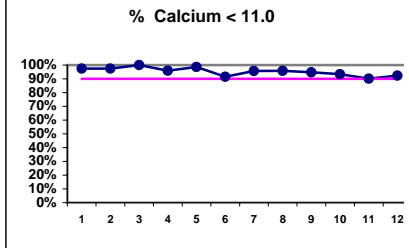
*Methodology: a) Monthly values based on patient's monthly average of all values present for the month; b) Quarter values are average of all values for quarter; c) Values not averaged use last value present at months end.

Lake Washington Kidney Center - Center Hemodialysis
Quality Assurance Reports (Excludes patients in first 6 months of treatment)

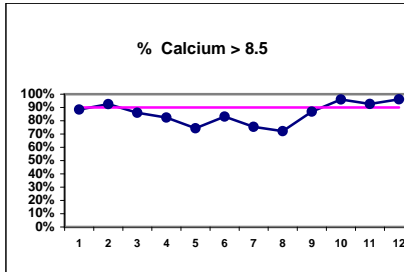
I.j - I.S. Dept.

Through period ending Dec. 31, 1999

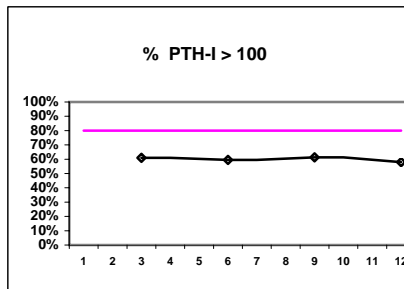
	J	F	M	A	M	J	J	A	S	O	N	D
# Calcium	78	80	79	74	74	71	69	72	76	76	81	78
# Calcium < 11.0	76	78	79	71	73	65	66	69	72	71	73	72
Pop. Mean =	9.5	9.5	9.3	9.3	9.3	9.4	9.1	9.0	9.5	9.9	9.6	9.6
Std. Deviation =	0.94	0.82	0.76	0.94	0.88	1.04	0.92	0.97	0.90	0.79	0.92	0.90
Network Mean =												
Natl. Mean =												
% Calcium < 11.0	97%	98%	100%	96%	99%	92%	96%	96%	95%	93%	90%	92%



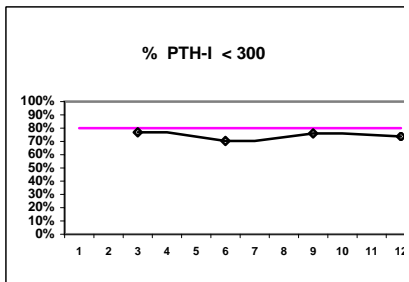
# Calcium	78	80	79	74	74	71	69	72	76	76	81	78
# Calcium > 8.5	69	74	68	61	55	59	52	52	66	73	75	75
Pop. Mean =	9.5	9.5	9.3	9.3	9.3	9.4	9.1	9.0	9.5	9.9	9.6	9.6
Std. Deviation =	0.94	0.82	0.76	0.94	0.88	1.04	0.92	0.97	0.90	0.79	0.92	0.90
Network Mean =												
Natl. Mean =												
% Calcium > 8.5	88%	93%	86%	82%	74%	83%	75%	72%	87%	96%	93%	96%



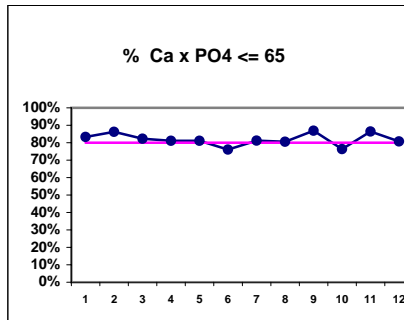
# PTH-I		82			37		75				19
# PTH-I > 100		50			22		46				11
Pop. Mean =		194			160		221				59
Std. Deviation =		218			314		234				164
Network Mean =											
Natl. Mean =											
% PTH-I > 100		61%			59%		61%				58%



# PTH-I		82			37		75				19
# PTH-I < 300		63			26		57				14
Pop. Mean =		194			160		221				59
Std. Deviation =		218			314		234				164
Network Mean =											
Natl. Mean =											
% PTH-I < 300		77%			70%		76%				74%

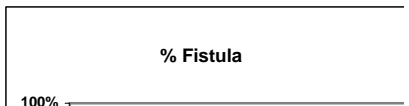


# Ca x PO4	78	80	79	74	74	71	69	72	76	76	81	78
# Ca x PO4 <= 65	65	69	65	60	60	54	56	58	66	58	70	63
Pop. Mean =	49.4	49.1	50.1	52.3	49.8	50.0	48.4	50.1	50.0	51.5	49.1	52.9
Std. Deviation =	14.5	15.0	15.9	14.5	15.7	17.3	16.4	15.1	15.3	17.5	14.7	14.1
Network Mean =												
Natl. Mean =												
% Ca x PO4 <= 65	83%	86%	82%	81%	81%	76%	81%	81%	87%	76%	86%	81%



IV. ACCESS

J F M A M J J A S O N D



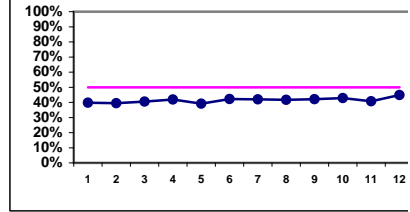
*Methodology: a) Monthly values based on patient's monthly average of all values present for the month; b) Quarter values are average of all values for quarter; c) Values not averaged use last value present at months end.

Lake Washington Kidney Center - Center Hemodialysis
Quality Assurance Reports (Excludes patients in first 6 months of treatment)

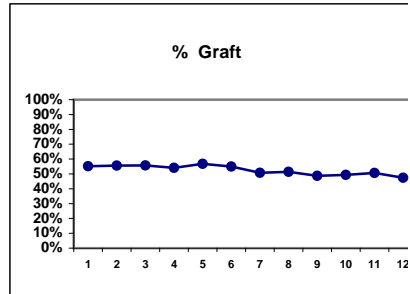
I,j - I.S. Dept.

Through period ending Dec. 31, 1999

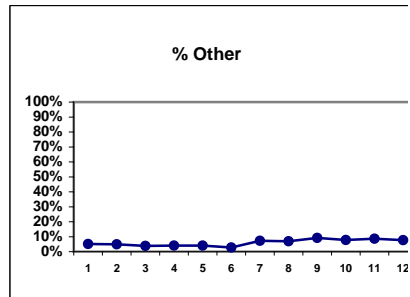
# Access	78	81	79	74	74	71	69	72	76	77	81	78
# Fistula	31	32	32	31	29	30	29	30	32	33	33	35
Network %												
Natl. %												
% Fistula	40%	40%	41%	42%	39%	42%	42%	42%	42%	43%	41%	45%



# Access	78	81	79	74	74	71	69	72	76	77	81	78
# Graft	43	45	44	40	42	39	35	37	37	38	41	37
Network %												
Natl. %												
% Graft	55%	56%	56%	54%	57%	55%	51%	51%	49%	49%	51%	47%

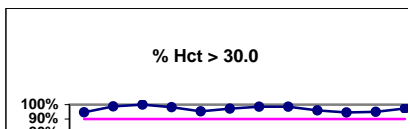


# Access	78	81	79	74	74	71	69	72	76	77	81	78
# Other	4	4	3	3	3	2	5	5	7	6	7	6
Network %												
Natl. %												
% Other	5%	5%	4%	4%	4%	3%	7%	7%	9%	8%	9%	8%



V. ANEMIA

	J	F	M	A	M	J	J	A	S	O	N	D
# Hct	75	79	78	56	64	71	67	67	75	73	79	74
# Hct > 30.0	71	78	78	55	61	69	66	66	72	69	75	72



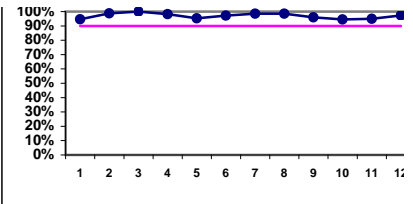
*Methodology: a) Monthly values based on patient's monthly average of all values present for the month; b) Quarter values are average of all values for quarter; c) Values not averaged use last value present at months end.

Lake Washington Kidney Center - Center Hemodialysis
Quality Assurance Reports (Excludes patients in first 6 months of treatment)

I,j - I.S. Dept.

Through period ending Dec. 31, 1999

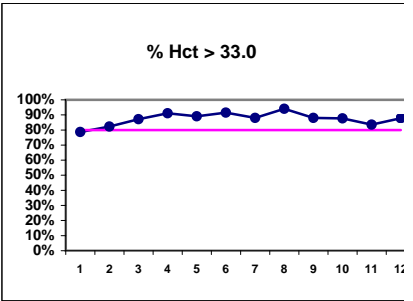
Pop. Mean =	35.0	35.9	36.5	36.8	36.5	36.6	36.4	36.5	36.3	36.0	36.0	36.4
Std. Deviation =	3.46	2.81	2.96	2.67	3.56	3.59	2.97	2.72	3.46	3.51	4.20	3.17
Network Mean =												
*Natl. Mean =	33.2	33.2	33.2	33.2	33.2	33.2	33.2	33.2	33.2	33.2	33.2	33.2
% Hct > 30.0	95%	99%	100%	98%	95%	97%	99%	99%	96%	95%	95%	97%
*% Network > 30.0	85%	85%	85%	85%	85%	85%	85%	85%	85%	85%	85%	85%
*% Natl. > 30.0	79%	79%	79%	79%	79%	79%	79%	79%	79%	79%	79%	79%



* Figures for 1997

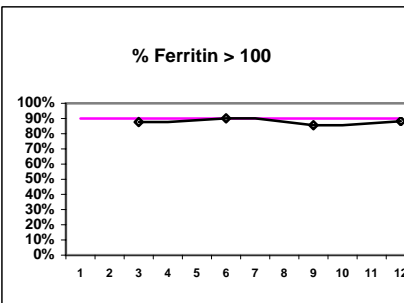
# Hct	75	79	78	56	64	71	67	67	75	73	79	74
# Hct > 33.0	59	65	68	51	57	65	59	63	66	64	66	65
Pop. Mean =	35.0	35.9	36.5	36.8	36.5	36.6	36.4	36.5	36.3	36.0	36.0	36.4
Std. Deviation =	3.46	2.81	2.96	2.67	3.56	3.59	2.97	2.72	3.46	3.51	4.20	3.17
Network Mean =												
*Natl. Mean =	33.2	33.2	33.2	33.2	33.2	33.2	33.2	33.2	33.2	33.2	33.2	33.2
% Hct > 33.0	79%	82%	87%	91%	89%	92%	88%	94%	88%	88%	84%	88%
*% Network > 33.0	64%	64%	64%	64%	64%	64%	64%	64%	64%	64%	64%	64%
*% Natl. > 33.0	56%	56%	56%	56%	56%	56%	56%	56%	56%	56%	56%	56%

*Figures for 1997

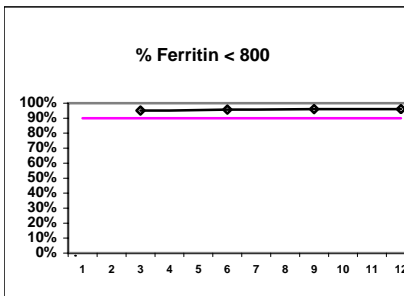


Iron Profile

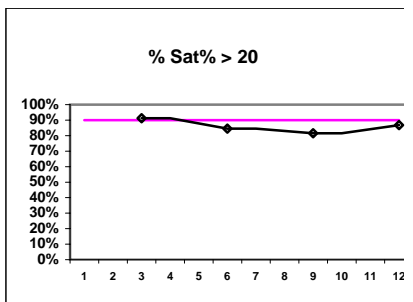
# Ferritin		81		71		76		76
# Ferritin > 100		71		64		65		67
Pop. Mean =		363		365		332		318
Std. Deviation =		253		230		235		227
Network Mean =								
Natl. Mean =								
% Ferritin > 100		88%		90%		86%		88%



# Ferritin		81		71		76		76
# Ferritin < 800		77		68		73		73
Pop. Mean =		363		365		332		318
Std. Deviation =		253		230		235		227
Network Mean =								
Natl. Mean =								
% Ferritin < 800		95%		96%		96%		96%

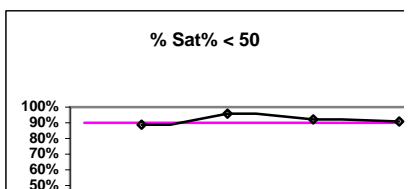


# % Sat		80		71		76		76
# % Sat > 20		73		60		62		66
Pop. Mean =		34.4		30.9		31.3		31.3
Std. Deviation =		14.9		11.0		13.1		12.2
Network Mean =								
Natl. Mean =								
% Sat% > 20		91%		85%		82%		87%



V. ANEMIA - CONT.

	J	F	M	A	M	J	J	A	S	O	N	D
# % Sat			80			71			76			76
# % Sat < 50			71			68			70			69
Pop. Mean =			34.4			30.9			31.3			31.3



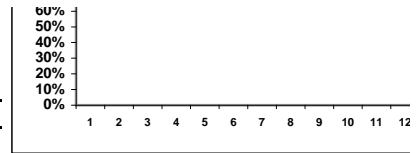
*Methodology: a) Monthly values based on patient's monthly average of all values present for the month; b) Quarter values are average of all values for quarter; c) Values not averaged use last value present at months end.

Lake Washington Kidney Center - Center Hemodialysis
Quality Assurance Reports (Excludes patients in first 6 months of treatment)

I,j - I.S. Dept.

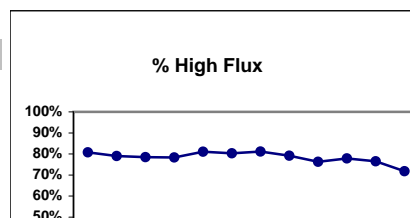
Through period ending Dec. 31, 1999

Std. Deviation =	14.9	11.0	13.1	12.2
Network Mean =				
Natl. Mean =				
% Sat% < 50	89%	96%	92%	91%



VI. OTHERS

	J	F	M	A	M	J	J	A	S	O	N	D
Dialyzer ratios												
# Dialyzers	78	81	79	74	74	71	69	72	76	77	81	78
# High Flux	63	64	62	58	60	57	56	57	58	60	62	56



*Methodology: a) Monthly values based on patient's monthly average of all values present for the month; b) Quarter values are average of all values for quarter; c) Values not averaged use last value present at months end.

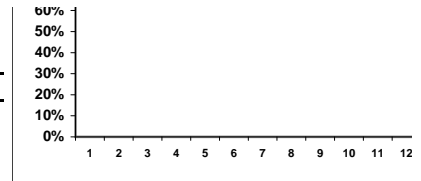
Lake Washington Kidney Center - Center Hemodialysis
Quality Assurance Reports (Excludes patients in first 6 months of treatment)
Through period ending Dec. 31, 1999

I,j - I.S. Dept.

Network %

Natl. %

% High Flux	81%	79%	78%	78%	81%	80%	81%	79%	76%	78%	77%	72%
--------------------	-----	-----	-----	-----	-----	-----	-----	-----	-----	-----	-----	-----

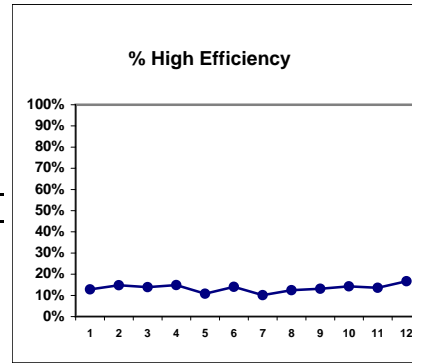


# Dialyzers	78	81	79	74	74	71	69	72	76	77	81	78
# High Efficiency	10	12	11	11	8	10	7	9	10	11	11	13

Network %

Natl. %

% High Efficiency	13%	15%	14%	15%	11%	14%	10%	13%	13%	14%	14%	17%
--------------------------	-----	-----	-----	-----	-----	-----	-----	-----	-----	-----	-----	-----

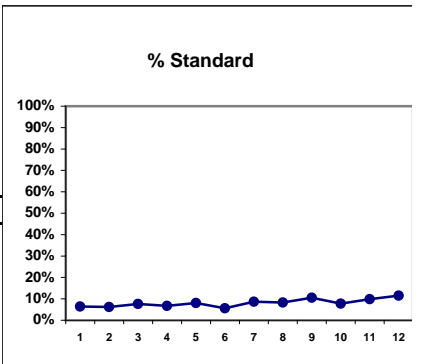


# Dialyzers	78	81	79	74	74	71	69	72	76	77	81	78
# Standard	5	5	6	5	6	4	6	6	8	6	8	9

Network %

Natl. %

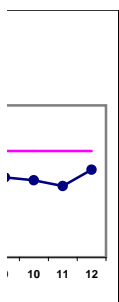
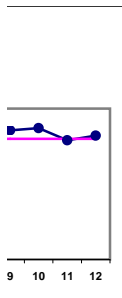
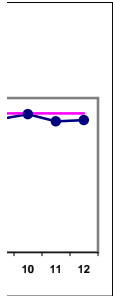
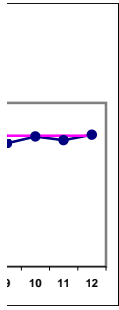
% Standard	6%	6%	8%	7%	8%	6%	9%	8%	11%	8%	10%	12%
-------------------	----	----	----	----	----	----	----	----	-----	----	-----	-----



*Methodology: a) Monthly values based on patient's monthly average of all values present for the month; b) Quarter values are average of all values for quarter; c) Values not averaged use last value present at months end.

Lake Washington Kidney Center - Center Hemodialysis
Quality Assurance Reports (Excludes patients in first 6 months of treatment)
Through period ending Dec. 31, 1999

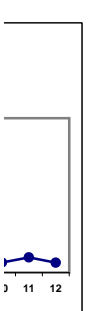
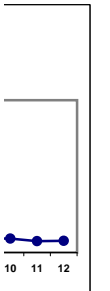
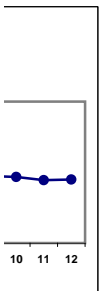
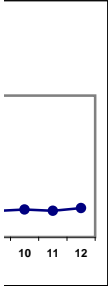
I,j - I.S. Dept.



*Methodology: a) Monthly values based on patient's monthly average of all values present for the month; b) Quarter values are average of all values for quarter; c) Values not averaged use last value present at months end.

Lake Washington Kidney Center - Center Hemodialysis
Quality Assurance Reports (Excludes patients in first 6 months of treatment)
Through period ending Dec. 31, 1999

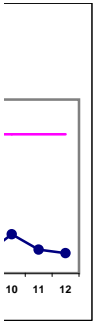
I,j - I.S. Dept.



*Methodology: a) Monthly values based on patient's monthly average of all values present for the month; b) Quarter values are average of all values for quarter; c) Values not averaged use last value present at months end.

Lake Washington Kidney Center - Center Hemodialysis
Quality Assurance Reports (Excludes patients in first 6 months of treatment)
Through period ending Dec. 31, 1999

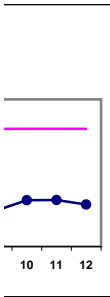
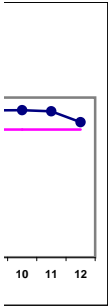
I,j - I.S. Dept.



*Methodology: a) Monthly values based on patient's monthly average of all values present for the month; b) Quarter values are average of all values for quarter; c) Values not averaged use last value present at months end.

Lake Washington Kidney Center - Center Hemodialysis
Quality Assurance Reports (Excludes patients in first 6 months of treatment)
Through period ending Dec. 31, 1999

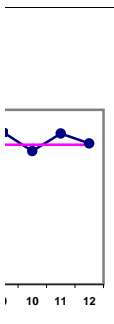
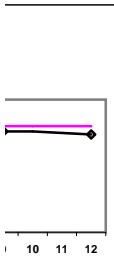
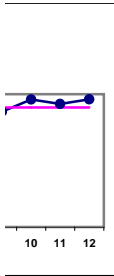
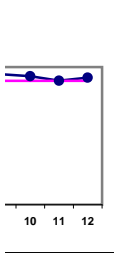
I,j - I.S. Dept.



*Methodology: a) Monthly values based on patient's monthly average of all values present for the month; b) Quarter values are average of all values for quarter; c) Values not averaged use last value present at months end.

Lake Washington Kidney Center - Center Hemodialysis
Quality Assurance Reports (Excludes patients in first 6 months of treatment)
Through period ending Dec. 31, 1999

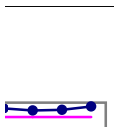
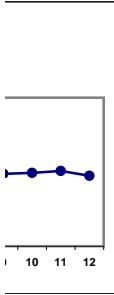
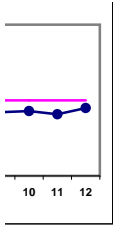
I,j - I.S. Dept.



*Methodology: a) Monthly values based on patient's monthly average of all values present for the month; b) Quarter values are average of all values for quarter; c) Values not averaged use last value present at months end.

Lake Washington Kidney Center - Center Hemodialysis
Quality Assurance Reports (Excludes patients in first 6 months of treatment)
Through period ending Dec. 31, 1999

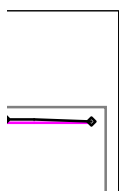
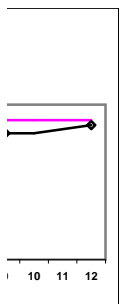
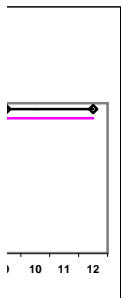
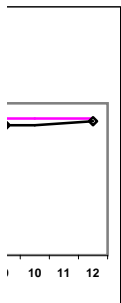
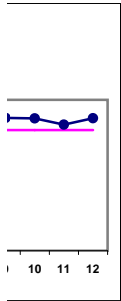
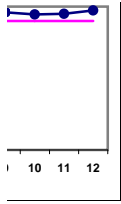
I,j - I.S. Dept.



***Methodology:** a) Monthly values based on patient's monthly average of all values present for the month; b) Quarter values are average of all values for quarter; c) Values not averaged use last value present at months end.

Lake Washington Kidney Center - Center Hemodialysis
Quality Assurance Reports (Excludes patients in first 6 months of treatment)
Through period ending Dec. 31, 1999

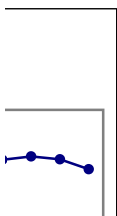
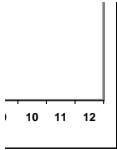
I,j - I.S. Dept.



***Methodology:** a) Monthly values based on patient's monthly average of all values present for the month; b) Quarter values are average of all values for quarter; c) Values not averaged use last value present at months end.

Lake Washington Kidney Center - Center Hemodialysis
Quality Assurance Reports (Excludes patients in first 6 months of treatment)
Through period ending Dec. 31, 1999

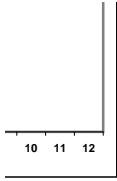
I,j - I.S. Dept.



***Methodology:** a) Monthly values based on patient's monthly average of all values present for the month; b) Quarter values are average of all values for quarter; c) Values not averaged use last value present at months end.

Lake Washington Kidney Center - Center Hemodialysis
Quality Assurance Reports (Excludes patients in first 6 months of treatment)
Through period ending Dec. 31, 1999

I,j - I.S. Dept.



*Methodology: a) Monthly values based on patient's monthly average of all values present for the month; b) Quarter values are average of all values for quarter; c) Values not averaged use last value present at months end.