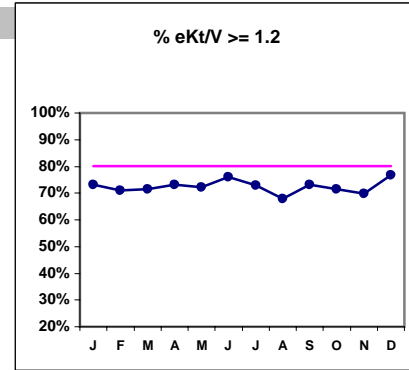


Lake Washington Kidney Center - Center Hemodialysis
 Quality Assurance Reports (Excludes patients in first 3 months of treatment - as of Dec. 31, 2002)
 Through period ending Dec. 31, 2002

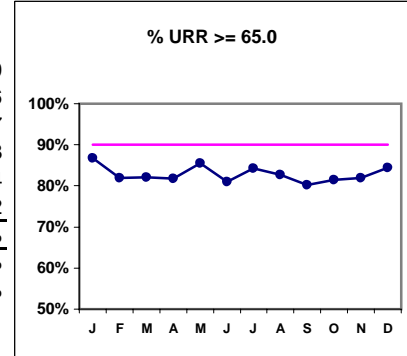
I. ADEQUACY OF DIALYSIS

	J	F	M	A	M	J	J	A	S	O	N	D
# eKt/V	82	83	84	82	83	79	81	81	86	81	83	90
# eKt/V >= 1.2	60	59	60	60	60	60	59	55	63	58	58	69
Pop. Mean =	1.42	1.30	1.34	1.33	1.31	1.31	1.45	1.31	1.28	1.30	1.33	1.35
Std. Deviation =	0.58	0.23	0.33	0.41	0.31	0.22	0.75	0.29	0.28	0.27	0.31	0.29
Network Mean =												
Natl. Mean =												
% eKt/V >= 1.2	73%	71%	71%	73%	72%	76%	73%	68%	73%	72%	70%	77%

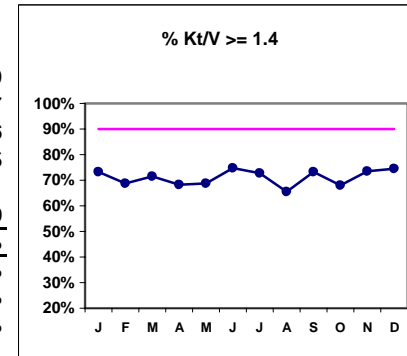


# URR	83	83	84	82	83	79	83	81	86	81	83	90
# URR >= 65.0	72	68	69	67	71	64	70	67	69	66	68	76
Pop. Mean =	73.4	71.9	72.1	72.0	71.6	71.9	72.8	71.3	70.4	71.4	72.1	72.7
Std. Deviation =	8.0	7.1	7.7	7.0	8.4	6.8	10.1	8.2	9.5	8.1	9.2	8.18
*Network Mean =	72.4	72.4	72.4	72.4	72.4	72.4	72.4	72.4	72.4	72.4	72.4	72.4
Natl. Mean =	68.2	68.2	68.2	68.2	68.2	68.2	68.2	68.2	68.2	68.2	68.2	68.2
% URR >= 65.0	87%	82%	82%	82%	86%	81%	84%	83%	80%	81%	82%	84%
*Network % > 65.0	87%	87%	87%	87%	87%	87%	87%	87%	87%	87%	87%	87%
*Natl. % > 65.0	82%	82%	82%	82%	82%	82%	82%	82%	82%	82%	82%	82%

* Figures for 2000



# Kt/V	82	83	84	82	83	79	81	81	86	81	83	90
# Kt/V >= 1.4	60	57	60	56	57	59	59	53	63	55	61	67
Pop. Mean =	1.64	1.52	1.56	1.55	1.52	1.52	1.68	1.52	1.49	1.51	1.55	1.56
Std. Deviation =	0.68	0.28	0.41	0.50	0.35	0.27	0.87	0.35	0.34	0.32	0.38	0.35
Network Mean =	1.61	1.61	1.61	1.61	1.61	1.61	1.61	1.61	1.61	1.61	1.61	1.61
Natl. Mean 1999 =	1.40	1.40	1.40	1.40	1.40	1.40	1.40	1.40	1.40	1.40	1.40	1.40
% Kt/V >= 1.4	73%	69%	71%	68%	69%	75%	73%	65%	73%	68%	73%	74%
% Kt/V > 1.2	91%	83%	85%	85%	86%	87%	84%	84%	81%	84%	87%	88%
Network > 1.2 '00	93%	93%	93%	93%	93%	93%	93%	93%	93%	93%	93%	93%
Natl. % > 1.2 - 2001	91%	91%	91%	91%	91%	91%	91%	91%	91%	91%	91%	91%

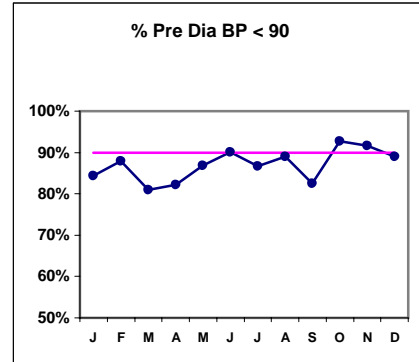


*Methodology: a) Monthly values based on patient's monthly average of all values present for the month; b) Quarter values are average of all values for quarter; c) Values not averaged use last value present at months end.

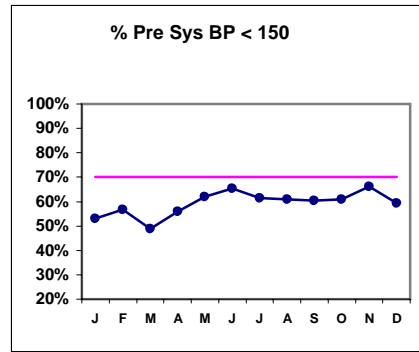
Lake Washington Kidney Center - Center Hemodialysis
 Quality Assurance Reports (Excludes patients in first 3 months of treatment - as of Dec. 31, 2002)
 Through period ending Dec. 31, 2002

I. ADEQUACY OF DIALYSIS - CONT.

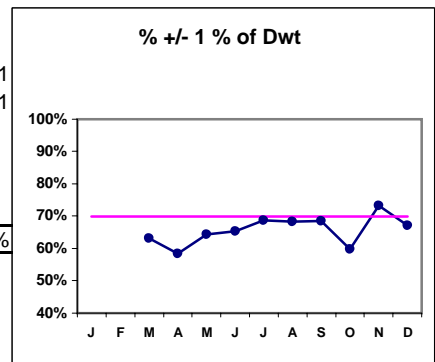
	J	F	M	A	M	J	J	A	S	O	N	D
Blood Pressure Control (Pre)												
# Pre Dia BP	83	83	84	84	84	81	83	82	86	82	83	91
# Pre Dia BP < 90	70	73	68	69	73	73	72	73	71	76	76	81
Pop. Mean =	78.4	78	79.2	78.6	77.5	75.8	76.9	75.9	77.4	76.4	76.7	77
Std. Deviation =	12.1	11.6	12.2	12.2	13.9	11.3	14.3	12.3	13.4	10.9	11	13.1
Network Mean =												
Natl. Mean =												
% Pre Dia BP < 90	84%	88%	81%	82%	87%	90%	87%	89%	83%	93%	92%	89%



# Pre Sys BP	83	83	84	84	84	81	83	82	86	82	83	91
# Pre Sys BP < 150	44	47	41	47	52	53	51	50	52	50	55	54
Pop. Mean =	148	147	149	148	145	142	143	145	145	144	143	144
Std. Deviation =	25.1	22.9	23.5	21.7	21.7	21	22.8	21.8	20.8	20	20.4	20
Network Mean =												
Natl. Mean =												
% Pre Sys BP < 150	53%	57%	49%	56%	62%	65%	61%	61%	60%	61%	66%	59%



# Post/Dwt	84	84	84	81	83	82	86	82	82	91
# +/- 1% Dwt	53	49	54	53	57	56	59	49	60	61
% +/- 1% of Dwt	63%	58%	64%	65%	69%	68%	69%	60%	73%	67%

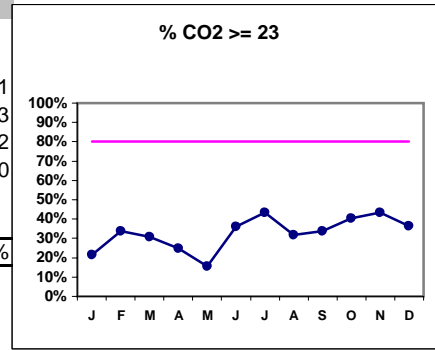


*Methodology: a) Monthly values based on patient's monthly average of all values present for the month; b) Quarter values are average of all values for quarter; c) Values not averaged use last value present at months end.

Lake Washington Kidney Center - Center Hemodialysis
 Quality Assurance Reports (Excludes patients in first 3 months of treatment - as of Dec. 31, 2002)
 Through period ending Dec. 31, 2002

I. ADEQUACY OF DIALYSIS - CONT.

	J	F	M	A	M	J	J	A	S	O	N	D
# CO2	83	83	84	84	84	80	83	82	86	82	83	91
# CO2 >= 23	18	28	26	21	13	29	36	26	29	33	36	33
Pop. Mean =	21	22	21	21	20	21	22	22	22	22	22	22
Std. Deviation =	2.2	2.27	2.81	2.23	2.32	3.3	2.82	2.39	2.3	2.81	2.49	2.40
Network Mean =												
Natl. Mean =												
% CO2 >= 23	22%	34%	31%	25%	15%	36%	43%	32%	34%	40%	43%	36%



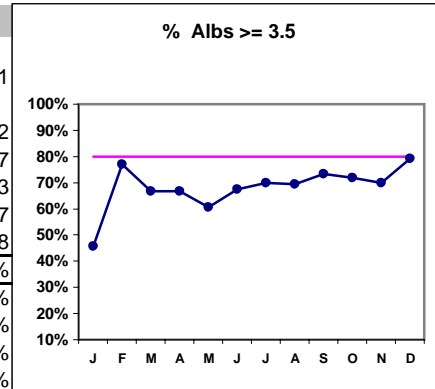
*Methodology: a) Monthly values based on patient's monthly average of all values present for the month; b) Quarter values are average of all values for quarter; c) Values not averaged use last value present at months end.

Lake Washington Kidney Center - Center Hemodialysis
 Quality Assurance Reports (Excludes patients in first 3 months of treatment - as of Dec. 31, 2002)
 Through period ending Dec. 31, 2002

*Albumin values use BCG method - as of July 2001

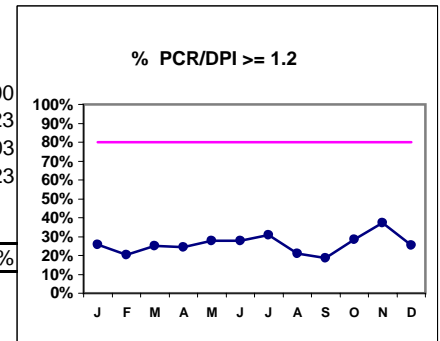
II. NUTRITION

	J	F	M	A	M	J	J	A	S	O	N	D
# Albumin	83	83	84	84	84	80	83	82	86	82	83	91
# Albumin >= 3.5	38	64	56	56	51	54	58	57	63	59	58	72
Pop. Mean =	3.4	3.6	3.5	3.6	3.5	3.6	3.6	3.6	3.6	3.6	3.6	3.7
Std. Deviation =	0.34	0.34	0.33	0.33	0.32	0.31	0.32	0.29	0.35	0.32	0.28	0.3
Network Mean =	3.7	3.7	3.7	3.7	3.7	3.7	3.7	3.7	3.7	3.7	3.7	3.7
Natl. Mean =	3.8	3.8	3.8	3.8	3.8	3.8	3.8	3.8	3.8	3.8	3.8	3.8
% Alb >= 3.5	46%	77%	67%	67%	61%	68%	70%	70%	73%	72%	70%	79%
AKC % >= 3.7	24%	49%	42%	45%	33%	39%	43%	43%	51%	45%	41%	47%
AKC % >= 4.0	5%	16%	8%	6%	7%	8%	19%	12%	16%	15%	16%	13%
*Natl % >= 3.5-BCG	80%	80%	80%	80%	80%	80%	80%	80%	80%	80%	80%	80%
*Natl. % >= 4.0-BCG	29%	29%	29%	29%	29%	29%	29%	29%	29%	29%	29%	29%
*Netwk%>=3.5 BCG	79%	79%	79%	79%	79%	79%	79%	79%	79%	79%	79%	79%
*Netwk%>=4.0 BCG	29%	29%	29%	29%	29%	29%	29%	29%	29%	29%	29%	29%



*Figures for 2000

# PCR/DPI	82	83	84	82	83	79	81	81	86	81	83	90
# PCR/DPI >= 1.2	21	17	21	20	23	22	25	17	16	23	31	23
Pop. Mean =	1.00	0.99	1.00	0.99	1.01	1.00	1.04	0.97	0.97	1.02	1.10	1.03
Std. Deviation =	0.25	0.24	0.27	0.25	0.26	0.26	0.25	0.20	0.21	0.25	0.28	0.23
Network Mean =												
Natl. Mean =												
% PCR/DPI >= 1.2	26%	20%	25%	24%	28%	28%	31%	21%	19%	28%	37%	26%

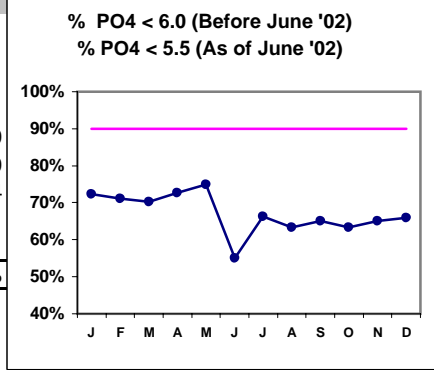


*Methodology: a) Monthly values based on patient's monthly average of all values present for the month; b) Quarter values are average of all values for quarter; c) Values not averaged use last value present at months end.

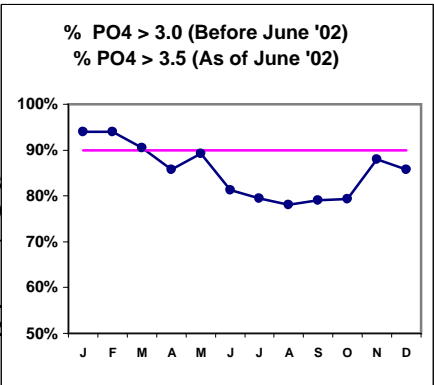
Lake Washington Kidney Center - Center Hemodialysis
 Quality Assurance Reports (Excludes patients in first 3 months of treatment - as of Dec. 31, 2002)
 Through period ending Dec. 31, 2002

III. OSTEODYSTROPHY

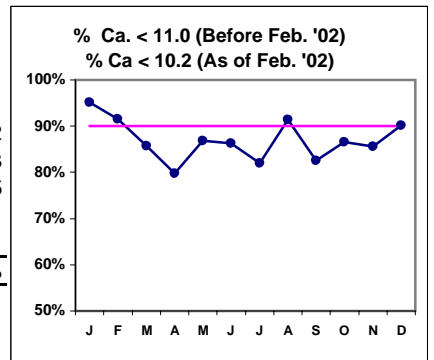
	J	F	M	A	M	J	J	A	S	O	N	D
# PO4	83	83	84	84	84	80	83	82	86	82	83	91
# PO4 < 6.0	60	59	59	61	63							
# PO4 < 5.5						44	55	52	56	52	54	60
Pop. Mean =	5.1	5.1	5.0	5.0	4.8	5.0	4.9	4.9	5.0	5.0	5.1	5.0
Std. Deviation	1.6	1.4	1.7	1.6	1.5	1.6	1.5	1.5	1.6	1.7	1.5	1.54
Network Mean =												
Natl. Mean =												
% PO4 < 6.0 or 5.5	72%	71%	70%	73%	75%	55%	66%	63%	65%	63%	65%	66%



# PO4	83	83	84	84	84	80	83	82	86	82	83	91
# PO4 > 3.0	78	78	76	72	75							
# PO4 > 3.5						65	66	64	68	65	73	78
Pop. Mean =	5.1	5.1	5.0	5.0	4.8	5.0	4.9	4.9	5.0	5.0	5.1	5.0
Std. Deviation	1.6	1.4	1.7	1.6	1.5	1.6	1.5	1.5	1.6	1.7	1.5	1.54
Network Mean =												
Natl. Mean =												
% PO4 > 3.0 or 3.5	94%	94%	90%	86%	89%	81%	80%	78%	79%	79%	88%	86%



# Calcium	83	83	84	84	84	80	83	82	86	82	83	91
# Calcium < 11.0	79											
# Calcium < 10.2		76	72	67	73	69	68	75	71	71	71	82
Pop. Mean =	9.2	9.2	9.2	9.4	9.3	9.4	9.4	9.3	9.4	9.3	9.4	9.3
Std. Deviation	0.85	0.74	0.83	0.87	0.77	0.84	0.76	0.74	0.77	0.84	0.81	0.65
Network Mean =												
Natl. Mean =												
% Ca < 11.0 or 10.2	95%	92%	86%	80%	87%	86%	82%	91%	83%	87%	86%	90%



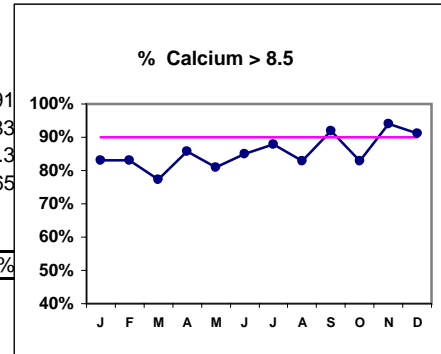
*Methodology: a) Monthly values based on patient's monthly average of all values present for the month; b) Quarter values are average of all values for quarter; c) Values not averaged use last value present at months end.

Lake Washington Kidney Center - Center Hemodialysis
 Quality Assurance Reports (Excludes patients in first 3 months of treatment - as of Dec. 31, 2002)
 Through period ending Dec. 31, 2002

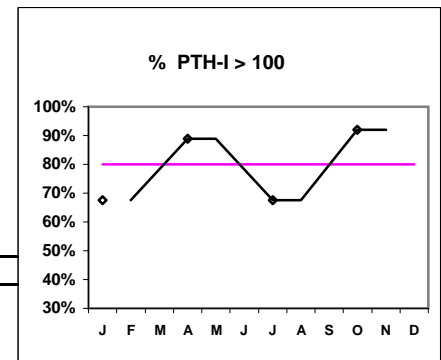
III. OSTEODYSTROPHY - CONT.

J F M A M J J A S O N D

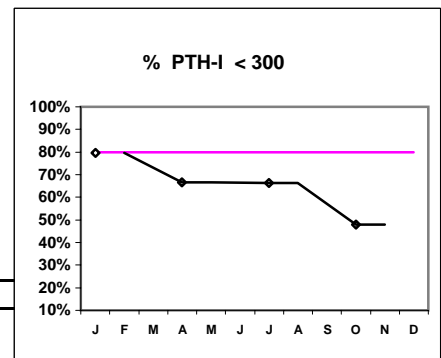
# Calcium	83	83	84	84	84	80	83	82	86	82	83	91
# Calcium > 8.5	69	69	65	72	68	68	73	68	79	68	78	83
Pop. Mean =	9.2	9.2	9.2	9.4	9.3	9.4	9.4	9.3	9.4	9.3	9.4	9.3
Std. Deviation =	0.85	0.74	0.83	0.87	0.77	0.84	0.76	0.74	0.77	0.84	0.81	0.65
Network Mean =												
Natl. Mean =												
% Calcium > 8.5	83%	83%	77%	86%	81%	85%	88%	83%	92%	83%	94%	91%



# PTH-I	83	36	83	25
# PTH-I > 100	56	32	56	23
Pop. Mean =	207	299	271	453
Std. Deviation =	170	201	249	405
Network Mean =				
Natl. Mean =				
% PTH-I > 100	67%	89%	67%	92%



# PTH-I	83	36	83	25
# PTH-I < 300	66	24	55	12
Pop. Mean =	207	299	271	453
Std. Deviation =	170	201	249	405
Network Mean =				
Natl. Mean =				
% PTH-I < 300	80%	67%	66%	48%

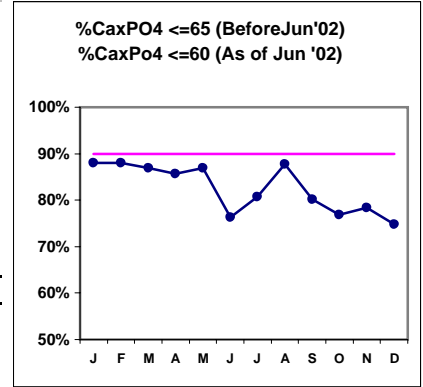


*Methodology: a) Monthly values based on patient's monthly average of all values present for the month; b) Quarter values are average of all values for quarter; c) Values not averaged use last value present at months end.

Lake Washington Kidney Center - Center Hemodialysis
 Quality Assurance Reports (Excludes patients in first 3 months of treatment - as of Dec. 31, 2002)
 Through period ending Dec. 31, 2002

III. OSTEODYSTROPHY - CONT.

	J	F	M	A	M	J	J	A	S	O	N	D
# Ca x PO4	83	83	84	84	84	80	83	82	86	82	83	91
# Ca x PO4 <= 65	73	73	73	72	73							
# Ca x PO4 <= 60						61	67	72	69	63	65	68
Pop. Mean =	47.0	46.9	46.1	47.3	45.5	47.3	46.6	45.8	46.9	46.9	48.3	47.0
Std. Deviation =	15.6	14.1	17.0	16.9	15.6	15.6	15.5	15.2	16.2	17.4	15.7	15.2
Network Mean =												
Natl. Mean =												
CaxPO4 <= 65or60	88%	88%	87%	86%	87%	76%	81%	88%	80%	77%	78%	75%

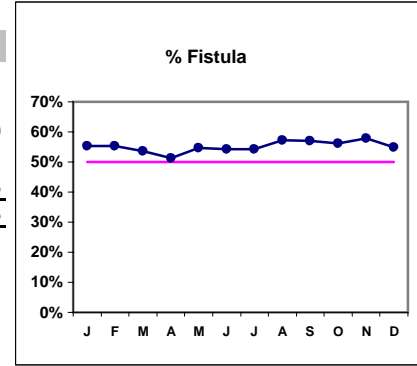


*Methodology: a) Monthly values based on patient's monthly average of all values present for the month; b) Quarter values are average of all values for quarter; c) Values not averaged use last value present at months end.

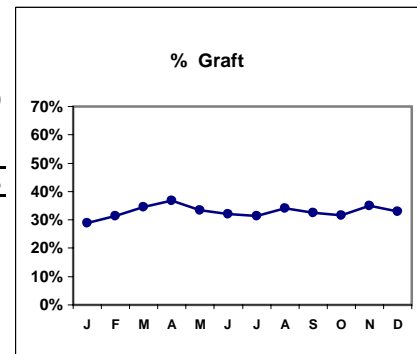
Lake Washington Kidney Center - Center Hemodialysis
 Quality Assurance Reports (Excludes patients in first 3 months of treatment - as of Dec. 31, 2002)
 Through period ending Dec. 31, 2002

IV. ACCESS

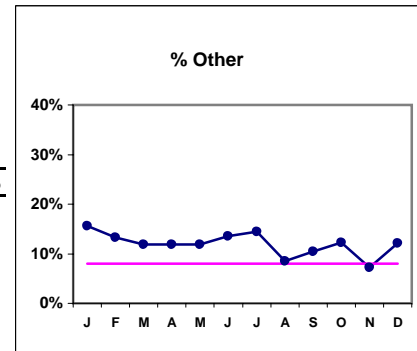
	J	F	M	A	M	J	J	A	S	O	N	D
# Access	83	83	84	84	84	81	83	82	86	82	83	91
# Fistula	46	46	45	43	46	44	45	47	49	46	48	50
Network %												
Natl. % - 2000	30%	30%	30%	30%	30%	30%	30%	30%	30%	30%	30%	30%
% Fistula	55%	55%	54%	51%	55%	54%	54%	57%	57%	56%	58%	55%



# Access	83	83	84	84	84	81	83	82	86	82	83	91
# Graft	24	26	29	31	28	26	26	28	28	26	29	30
Network %												
Natl. %												
% Graft	29%	31%	35%	37%	33%	32%	31%	34%	33%	32%	35%	33%



# Access	83	83	84	84	84	81	83	82	86	82	83	91
# Other	13	11	10	10	10	11	12	7	9	10	6	11
Network %												
Natl. %												
% Other	16%	13%	12%	12%	12%	14%	14%	9%	10%	12%	7%	12%



*Methodology: a) Monthly values based on patient's monthly average of all values present for the month; b) Quarter values are average of all values for quarter; c) Values not averaged use last value present at months end.

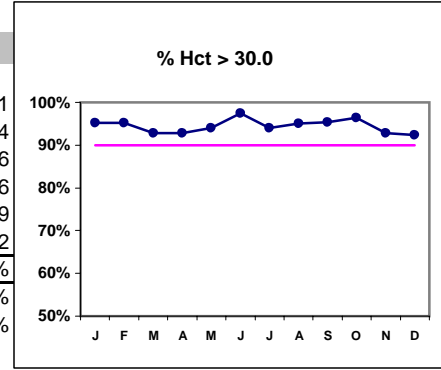
Lake Washington Kidney Center - Center Hemodialysis
 Quality Assurance Reports (Excludes patients in first 3 months of treatment - as of Dec. 31, 2002)
 Through period ending Dec. 31, 2002

*Hct. values use Coulter method - as of July 2001

V. ANEMIA

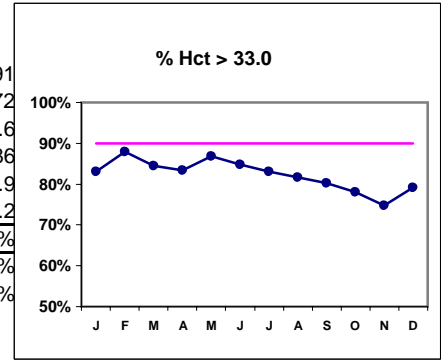
	J	F	M	A	M	J	J	A	S	O	N	D
# Hct	83	83	84	84	84	79	83	82	86	82	83	91
# Hct > 30.0	79	79	78	78	79	77	78	78	82	79	77	84
Pop. Mean =	35.9	36.4	35.9	36.0	36.3	36.3	36.2	35.9	36.0	35.6	35.2	35.6
Std. Deviation =	3.2	3.3	3.5	3.7	3.4	3.7	3.8	3.6	4.0	3.3	3.7	3.86
Network Mean =	33.9	33.9	33.9	33.9	33.9	33.9	33.9	33.9	33.9	33.9	33.9	33.9
Natl. Mean =	34.2	34.2	34.2	34.2	34.2	34.2	34.2	34.2	34.2	34.2	34.2	34.2
% Hct > 30.0	95%	95%	93%	93%	94%	97%	94%	95%	95%	96%	93%	92%
*** Network > 30.0	89%	89%	89%	89%	89%	89%	89%	89%	89%	89%	89%	89%
*** Natl. > 30.0	79%	79%	79%	79%	79%	79%	79%	79%	79%	79%	79%	79%

* Figures for 2000



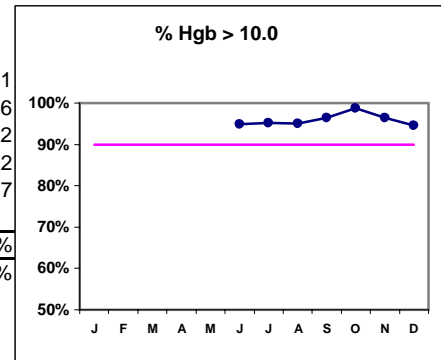
# Hct	83	83	84	84	84	79	83	82	86	82	83	91
# Hct > 33.0	69	73	71	70	73	67	69	67	69	64	62	72
Pop. Mean =	35.9	36.4	35.9	36.0	36.3	36.3	36.2	35.9	36.0	35.6	35.2	35.6
Std. Deviation =	3.2	3.3	3.5	3.7	3.4	3.7	3.8	3.6	4.0	3.3	3.7	3.86
Network Mean =	33.9	33.9	33.9	33.9	33.9	33.9	33.9	33.9	33.9	33.9	33.9	33.9
Natl. Mean =	34.2	34.2	34.2	34.2	34.2	34.2	34.2	34.2	34.2	34.2	34.2	34.2
% Hct > 33.0	83%	88%	85%	83%	87%	85%	83%	82%	80%	78%	75%	79%
*** Network > 33.0	74%	74%	74%	74%	74%	74%	74%	74%	74%	74%	74%	74%
*** Natl. > 33.0	73%	73%	73%	73%	73%	73%	73%	73%	73%	73%	73%	73%

* Figures for 2000



# Hgb						79	83	82	86	82	83	91
# Hgb > 10.0						75	79	78	83	81	80	86
Pop. Mean =						12.1	12	11.9	12	11.9	11.9	12
Std. Deviation =						1.18	1.22	1.16	1.25	1.06	1.16	1.22
*Network Mean =	11.7	11.7	11.7	11.7	11.7	11.7	11.7	11.7	11.7	11.7	11.7	11.7
Natl. Mean =												
% Hgb > 10.0						95%	95%	95%	97%	99%	96%	95%
*** Network >= 10	93%	93%	93%	93%	93%	93%	93%	93%	93%	93%	93%	93%

* Figures for 2000

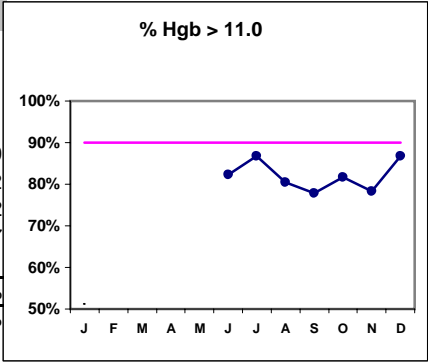


*Methodology: a) Monthly values based on patient's monthly average of all values present for the month; b) Quarter values are average of all values for quarter; c) Values not averaged use last value present at months end.

Lake Washington Kidney Center - Center Hemodialysis
 Quality Assurance Reports (Excludes patients in first 3 months of treatment - as of Dec. 31, 2002)
 Through period ending Dec. 31, 2002

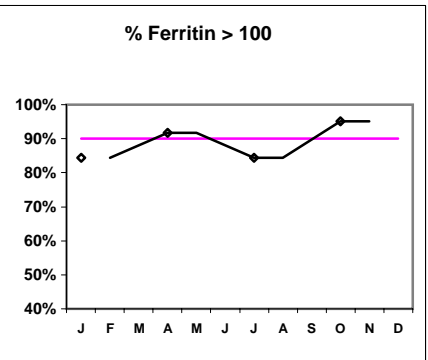
V. ANEMIA - CONT.

	J	F	M	A	M	J	J	A	S	O	N	D
# Hgb						79	83	82	86	82	83	91
# Hgb > 11.0						65	72	66	67	67	65	79
Pop. Mean =						12.1	12	11.9	12	11.9	11.9	12
Std. Deviation =						1.18	1.22	1.16	1.25	1.06	1.16	1.22
*Network Mean =	11.7	11.7	11.7	11.7	11.7	11.7	11.7	11.7	11.7	11.7	11.7	11.7
Natl. Mean =												
% Hgb > 11.0						82%	87%	80%	78%	82%	78%	87%
*% Network >= 11	76%	76%	76%	76%	76%	76%	76%	76%	76%	76%	76%	76%

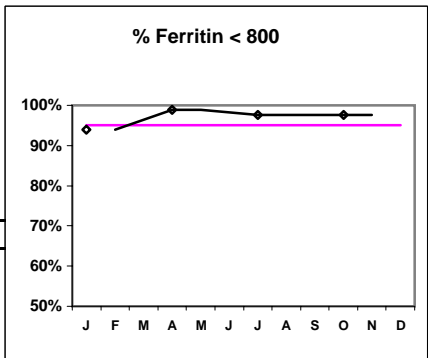


Iron Profile

# Ferritin	83	84	83	82
# Ferritin > 100	70	77	70	78
Pop. Mean =	354	295	337	329
Std. Deviation =	258	160	247	211
*Network Mean =	489	489	489	489
Natl. Mean =				
% Ferritin > 100	84%	92%	84%	95%
*% Network > 100	88%	88%	88%	88%



# Ferritin	83	84	83	82
# Ferritin < 800	78	83	81	80
Pop. Mean =	354	295	337	329
Std. Deviation =	258	160	247	211
*Network Mean =	489	489	489	489
Natl. Mean =				
% Ferritin < 800	94%	99%	98%	98%



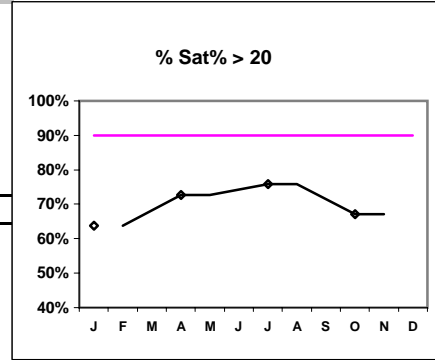
*Methodology: a) Monthly values based on patient's monthly average of all values present for the month; b) Quarter values are average of all values for quarter; c) Values not averaged use last value present at months end.

Lake Washington Kidney Center - Center Hemodialysis
 Quality Assurance Reports (Excludes patients in first 3 months of treatment - as of Dec. 31, 2002)
 Through period ending Dec. 31, 2002

V. ANEMIA - CONT.

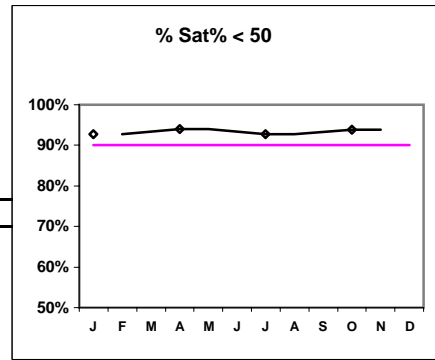
	J	F	M	A	M	J	J	A	S	O	N	D
# % Sat	83			84			83			82		
# % Sat > 20	53			61			63			55		
Pop. Mean =	27.2			27.6			29			28.5		
Std. Deviation =	12.7			11.4			11.3			12.9		
*Network Mean =	28			28			28			28		
Natl. Mean =												
% Sat% > 20	64%			73%			76%			67%		
*% Network > 20	71%			71%			71%			71%		

*Figures for 2000



# % Sat	83		84		83		82
# % Sat < 50	77		79		77		77
Pop. Mean =	27.2		27.6		29		28.5
Std. Deviation =	12.7		11.4		11.3		12.9
*Network Mean =	28		28		28		28
Natl. Mean =							
% Sat% < 50	93%		94%		93%		94%

*Figures for 2000



*Methodology: a) Monthly values based on patient's monthly average of all values present for the month; b) Quarter values are average of all values for quarter; c) Values not averaged use last value present at months end.