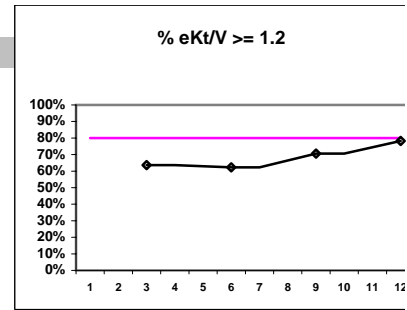


Northwest Kidney Centers - Home Hemodialysis
Quality Assurance Reports (Excludes patients in first 6 months of treatment)
Through period ending Dec. 31, 1999

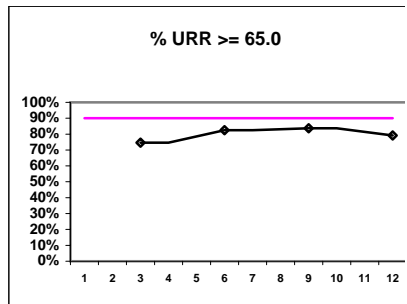
I.j - I.S. Dept.

I. ADEQUACY OF DIALYSIS

	J	F	M	A	M	J	J	A	S	O	N	D
# eKt/V			55			53			51			23
# eKt/V >= 1.2			35			33			36			18
Pop. Mean =			1.22			1.27			1.32			1.33
Std. Deviation =			0.28			0.21			0.26			0.20
Network Mean =												
Natl. Mean =												
% eKt/V >= 1.2			64%			62%			71%			78%

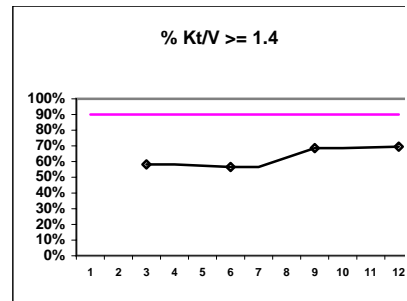


# URR		67		57		55		24
# URR >= 65.0		50		47		46		19
Pop. Mean =		69.5		69.9		71.2		71.5
Std. Deviation =		8.30		6.33		7.76		6.65
*Network Mean =		74.0		74.0		74.0		74.0
*Natl. Mean =		68.0		68.0		68.0		68.0
% URR >= 65.0		75%		82%		84%		79%
*Natl. % > 65.0		72%		72%		72%		72%



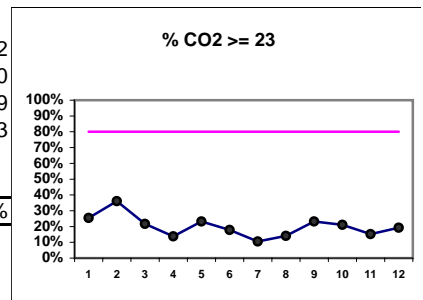
* Figures for 1997

# Kt/V		55		53		51		23
# Kt/V >= 1.4		32		30		35		16
Pop. Mean =		1.52		1.45		1.52		1.53
Std. Deviation =		0.32		0.25		0.31		0.26
Network Mean =								
*Natl. Mean =		1.39		1.39		1.39		1.39
% Kt/V >= 1.4		58%		57%		69%		70%
% Kt/V > 1.2		75%		89%		88%		83%
*Network % > 1.2		79%		79%		79%		79%
*Natl. % > 1.2		78%		78%		78%		78%



*Figures for 1997

# CO2	63	61	60	58	56	56	57	57	56	57	46	52
# CO2 >= 23	16	22	13	8	13	10	6	8	13	12	7	10
Pop. Mean =	20	21	20	19	20	19	19	19	20	19	18	19
Std. Deviation =	4.22	3.40	4.21	4.29	3.72	5.20	3.35	4.18	3.08	4.70	6.62	3.93
Network Mean =												
*Natl. Mean =												
% CO2 >= 23	25%	36%	22%	14%	23%	18%	11%	14%	23%	21%	15%	19%



*Methodology: a) Monthly values based on patient's monthly average of all values present for the month; b) Quarter values are average of all values for quarter; c) Values not averaged use last value present at months end.

Northwest Kidney Centers - Home Hemodialysis
 Quality Assurance Reports (Excludes patients in first 6 months of treatment)
 Through period ending Dec. 31, 1999

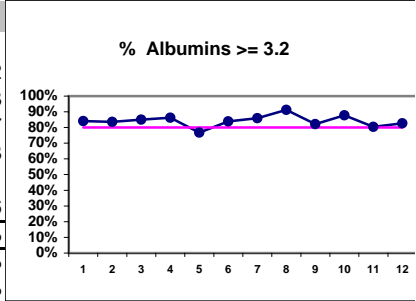
I,j - I.S. Dept.

(Note: Jan & Feb Albumin values are adjusted by +0.2)

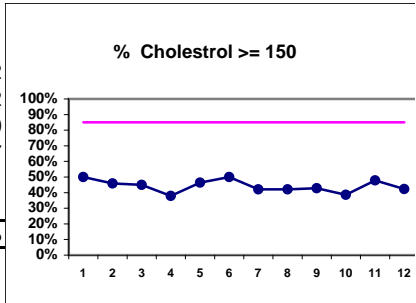
***Albumin values use BCP method**

II. NUTRITION

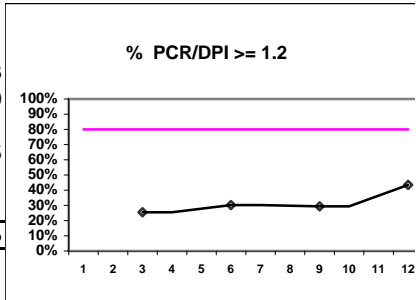
	J	F	M	A	M	J	J	A	S	O	N	D
# Albumin	63	61	60	58	56	56	57	57	56	57	46	52
# Albumin >= 3.2	53	51	51	50	43	47	49	52	46	50	37	43
Pop. Mean =	3.6	3.5	3.5	3.5	3.6	3.6	3.6	3.7	3.6	3.7	3.7	3.7
Std. Deviation =	0.42	0.43	0.46	0.46	0.48	0.49	0.43	0.38	0.51	0.51	0.55	0.53
Network Mean =												
*Natl. Mean =	3.6	3.6	3.6	3.6	3.6	3.6	3.6	3.6	3.6	3.6	3.6	3.6
% Albumin >= 3.2	84%	84%	85%	86%	77%	84%	86%	91%	82%	88%	80%	83%
*Network % >= 3.2	76%	76%	76%	76%	76%	76%	76%	76%	76%	76%	76%	76%
*Natl. % >= 3.2	83%	83%	83%	83%	83%	83%	83%	83%	83%	83%	83%	83%



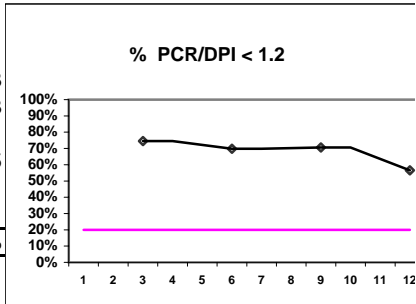
# Cholesterol	62	61	60	58	56	56	57	57	56	57	46	52
# Chol. >= 150	31	28	27	22	26	28	24	24	24	22	22	22
Pop. Mean =	159	155	143	149	148	152	151	151	151	148	136	150
Std. Deviation =	52.3	46.1	39.3	34.9	38.2	44.7	40.1	42.3	39.5	49.0	62.0	48.7
Network Mean =												
Natl. Mean =												
% Chol. >= 150	50%	46%	45%	38%	46%	50%	42%	42%	43%	39%	48%	42%



# PCR/DPI		55		53		51		23
# PCR/DPI >= 1.2		14		16		15		10
Pop. Mean =		0.92		1.03		1.05		1.11
Std. Deviation =		0.22		0.27		0.36		0.35
Network Mean =								
Natl. Mean =								
% PCR/DPI >= 1.2		25%		30%		29%		43%



# PCR/DPI		55		53		51		23
# PCR/DPI < 1.2		41		37		36		13
Pop. Mean =		0.92		1.03		1.05		1.11
Std. Deviation =		0.22		0.27		0.36		0.35
Network Mean =								
Natl. Mean =								
% PCR/DPI < 1.2		75%		70%		71%		57%



III. OSTEODYSTROPHY

% Calcium < 11.0

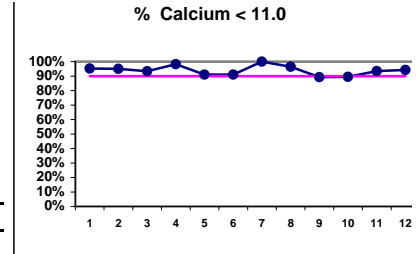
*Methodology: a) Monthly values based on patient's monthly average of all values present for the month; b) Quarter values are average of all values for quarter; c) Values not averaged use last value present at months end.

Northwest Kidney Centers - Home Hemodialysis
Quality Assurance Reports (Excludes patients in first 6 months of treatment)

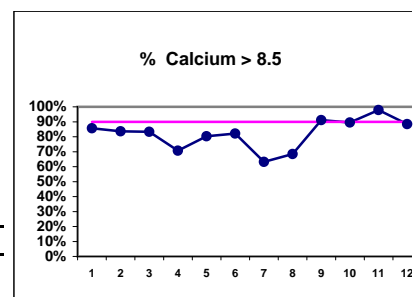
I,j - I.S. Dept.

Through period ending Dec. 31, 1999

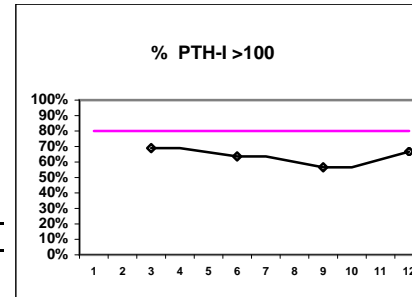
	J	F	M	A	M	J	J	A	S	O	N	D
# Calcium	63	61	60	58	56	56	57	57	56	57	46	52
# Calcium < 11.0	60	58	56	57	51	51	57	55	50	51	43	49
Pop. Mean =	9.3	9.4	9.5	9.1	9.4	9.4	9.0	9.1	9.7	9.6	9.7	9.3
Std. Deviation	1.19	1.21	1.22	1.08	0.99	0.99	0.89	0.97	0.95	1.41	0.97	1.01
Network Mean =												
Natl. Mean =												
% Calcium < 11.0	95%	95%	93%	98%	91%	91%	100%	96%	89%	89%	93%	94%



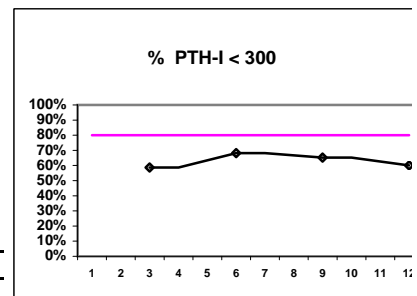
# Calcium	63	61	60	58	56	56	57	57	56	57	46	52
# Calcium > 8.5	54	51	50	41	45	46	36	39	51	51	45	46
Pop. Mean =	9.3	9.4	9.5	9.1	9.4	9.4	9.0	9.1	9.7	9.6	9.7	9.3
Std. Deviation =	1.19	1.21	1.22	1.08	0.99	0.99	0.89	0.97	0.95	1.41	0.97	1.01
Network Mean =												
Natl. Mean =												
% Calcium > 8.5	86%	84%	83%	71%	80%	82%	63%	68%	91%	89%	98%	88%



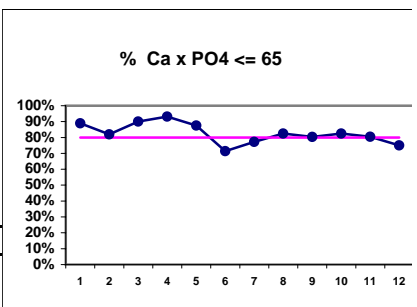
# PTH-I			29			22			23			15
# PTH-I > 100			20			14			13			10
Pop. Mean =			368			99			171			92
Std. Deviation =			327			240			543			241
Network Mean =												
Natl. Mean =												
% PTH-I > 100			69%			64%			57%			67%



# PTH-I			29			22			23			15
# PTH-I < 300			17			15			15			9
Pop. Mean =			368			99			171			92
Std. Deviation =			327			240			543			241
Network Mean =												
Natl. Mean =												
% PTH-I < 300			59%			68%			65%			60%

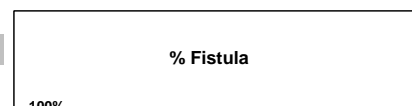


# Ca x PO4	63	61	60	58	56	56	57	57	56	57	46	52
# Ca x PO4 <= 65	56	50	54	54	49	40	44	47	45	47	37	39
Pop. Mean =	47.1	47.3	47.6	47.9	48.1	52.2	50.3	49.3	51.9	53.8	49.6	54.3
Std. Deviation =	16.1	15.4	15.60	13.3	16.0	17.2	18.3	16.5	16.5	20.2	19.5	15.7
Network Mean =												
Natl. Mean =												
% Ca x PO4 <= 65	89%	82%	90%	93%	88%	71%	77%	82%	80%	82%	80%	75%



IV. ACCESS

J F M A M J J A S O N D

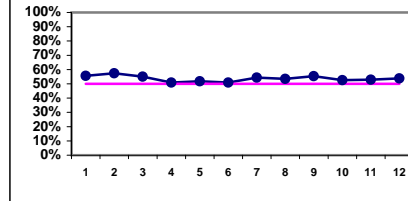


*Methodology: a) Monthly values based on patient's monthly average of all values present for the month; b) Quarter values are average of all values for quarter; c) Values not averaged use last value present at months end.

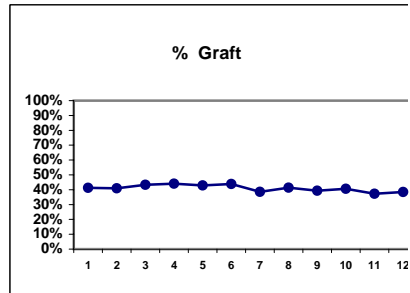
Northwest Kidney Centers - Home Hemodialysis
Quality Assurance Reports (Excludes patients in first 6 months of treatment)
Through period ending Dec. 31, 1999

I,j - I.S. Dept.

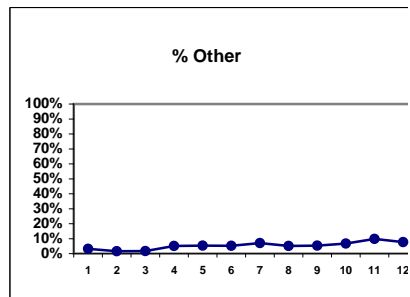
# Access	63	61	60	59	56	57	57	58	56	59	51	52
# Fistula	35	35	33	30	29	29	31	31	31	31	27	28
Network %												
Natl. %												
% Fistula	56%	57%	55%	51%	52%	51%	54%	53%	55%	53%	53%	54%



# Access	63	61	60	59	56	57	57	58	56	59	51	52
# Graft	26	25	26	26	24	25	22	24	22	24	19	20
Network %												
Natl. %												
% Graft	41%	41%	43%	44%	43%	44%	39%	41%	39%	41%	37%	38%



# Access	63	61	60	59	56	57	57	58	56	59	51	52
# Other	2	1	1	3	3	3	4	3	3	4	5	4
Network %												
Natl. %												
% Other	3%	2%	2%	5%	5%	5%	7%	5%	5%	7%	10%	8%



V. ANEMIA

	J	F	M	A	M	J	J	A	S	O	N	D
# Hct	62	57	56	50	43	47	49	43	40	51	40	42

% Hct > 30.0

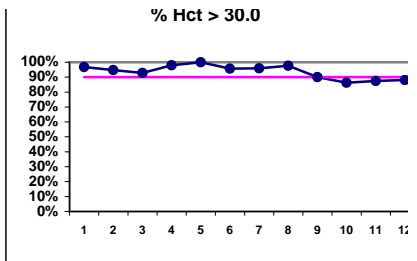
*Methodology: a) Monthly values based on patient's monthly average of all values present for the month; b) Quarter values are average of all values for quarter; c) Values not averaged use last value present at months end.

Northwest Kidney Centers - Home Hemodialysis
Quality Assurance Reports (Excludes patients in first 6 months of treatment)

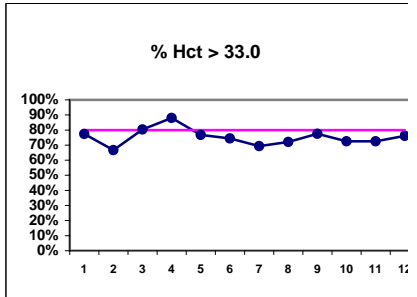
I.j - I.S. Dept.

Through period ending Dec. 31, 1999

# Hct > 30.0	60	54	52	49	43	45	47	42	36	44	35	37
Pop. Mean =	35.9	35.5	35.8	36.4	36.3	36.2	35.8	36.3	36.1	35.8	35.1	35.4
Std. Deviation =	4.17	4.73	4.02	3.71	3.50	4.87	4.46	3.79	3.99	4.48	4.62	3.91
Network Mean =												
*Natl. Mean =	33.2	33.2	33.2	33.2	33.2	33.2	33.2	33.2	33.2	33.2	33.2	33.2
% Hct > 30.0	97%	95%	93%	98%	100%	96%	96%	98%	90%	86%	88%	88%
*% Network > 30.0	85%	85%	85%	85%	85%	85%	85%	85%	85%	85%	85%	85%
*% Natl. > 30.0	79%	79%	79%	79%	79%	79%	79%	79%	79%	79%	79%	79%

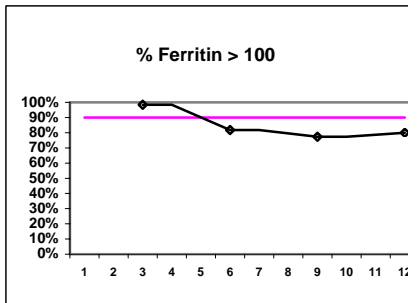


# Hct	62	57	56	50	43	47	49	43	40	51	40	42
# Hct > 33.0	48	38	45	44	33	35	34	31	31	37	29	32
Pop. Mean =	35.9	35.5	35.8	36.4	36.3	36.2	35.8	36.3	36.1	35.8	35.1	35.4
Std. Deviation =	4.17	4.73	4.02	3.71	3.50	4.87	4.46	3.79	3.99	4.48	4.62	3.91
Network Mean =												
*Natl. Mean =	33.2	33.2	33.2	33.2	33.2	33.2	33.2	33.2	33.2	33.2	33.2	33.2
% Hct > 33.0	77%	67%	80%	88%	77%	74%	69%	72%	78%	73%	73%	76%
*% Network > 33.0	64%	64%	64%	64%	64%	64%	64%	64%	64%	64%	64%	64%
*% Natl. > 33.0	56%	56%	56%	56%	56%	56%	56%	56%	56%	56%	56%	56%

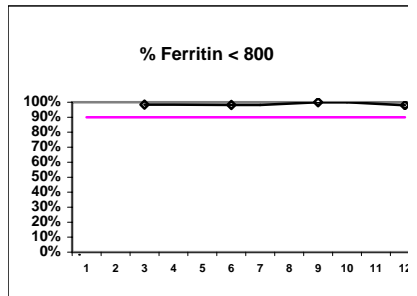


Iron Profile

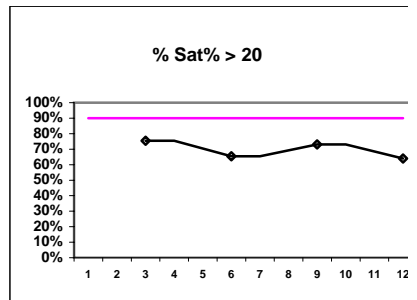
# Ferritin		64		55		53		50
# Ferritin > 100		63		45		41		40
Pop. Mean =		259		245		256		271
Std. Deviation =		364		193		202		211
Network Mean =								
Natl. Mean =								
% Ferritin > 100		98%		82%		77%		80%



# Ferritin		64		55		53		50
# Ferritin < 800		63		54		53		49
Pop. Mean =		259		245		256		271
Std. Deviation =		364		193		202		211
Network Mean =								
Natl. Mean =								
% Ferritin < 800		98%		98%		100%		98%

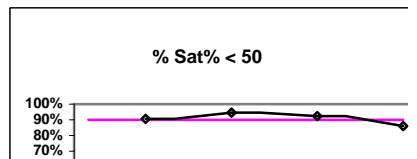


# % Sat		53		55		52		50
# % Sat > 20		40		36		38		32
Pop. Mean =		27.3		26.4		28.2		28.0
Std. Deviation =		12.7		10.8		11.7		14.1
Network Mean =								
Natl. Mean =								
% Sat% > 20		75%		65%		73%		64%



V. ANEMIA - CONT.

	J	F	M	A	M	J	J	A	S	O	N	D
# % Sat			53			55			52			50
# % Sat < 50			48			52			48			43

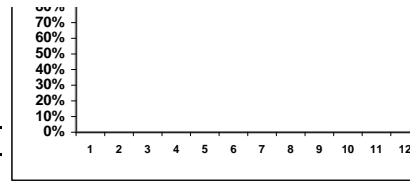


*Methodology: a) Monthly values based on patient's monthly average of all values present for the month; b) Quarter values are average of all values for quarter; c) Values not averaged use last value present at months end.

Northwest Kidney Centers - Home Hemodialysis
Quality Assurance Reports (Excludes patients in first 6 months of treatment)
Through period ending Dec. 31, 1999

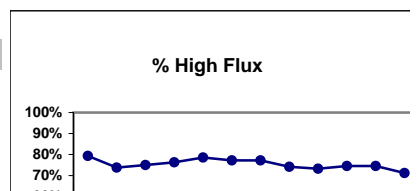
I,j - I.S. Dept.

Pop. Mean =	27.3	26.4	28.2	28.0
Std. Deviation =	12.7	10.8	11.7	14.1
Network Mean =				
Natl. Mean =				
% Sat% < 50	91%	95%	92%	86%



VI. OTHERS

	J	F	M	A	M	J	J	A	S	O	N	D
<u>Dialyzer ratios</u>												
# Dialyzers	63	61	60	59	56	57	57	58	56	59	51	52

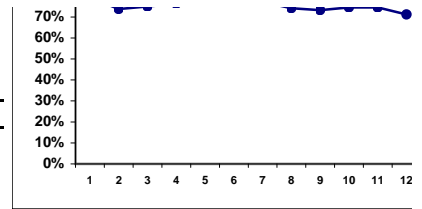


*Methodology: a) Monthly values based on patient's monthly average of all values present for the month; b) Quarter values are average of all values for quarter; c) Values not averaged use last value present at months end.

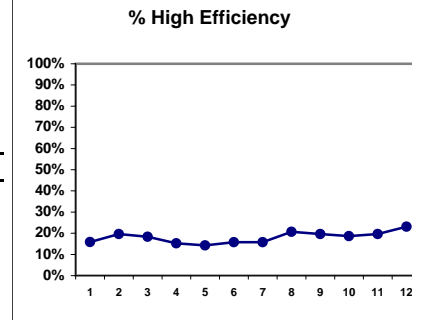
Northwest Kidney Centers - Home Hemodialysis
Quality Assurance Reports (Excludes patients in first 6 months of treatment)
Through period ending Dec. 31, 1999

I,j - I.S. Dept.

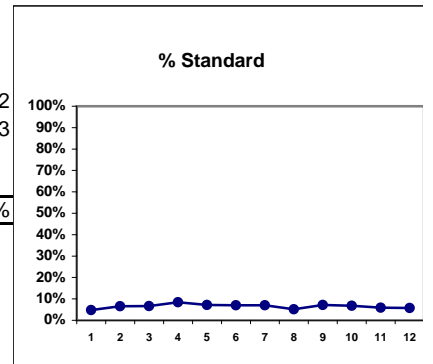
# High Flux	50	45	45	45	44	44	44	43	41	44	38	37
Network %												
Natl. %												
% High Flux	79%	74%	75%	76%	79%	77%	77%	74%	73%	75%	75%	71%



# Dialyzers	63	61	60	59	56	57	57	58	56	59	51	52
# High Efficiency	10	12	11	9	8	9	9	12	11	11	10	12
Network %												
Natl. %												
% High Efficiency	16%	20%	18%	15%	14%	16%	16%	21%	20%	19%	20%	23%



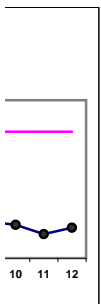
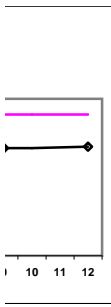
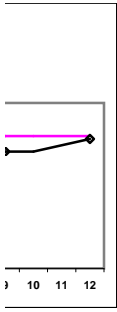
# Dialyzers	63	61	60	59	56	57	57	58	56	59	51	52
# Standard	3	4	4	5	4	4	4	3	4	4	3	3
Network %												
Natl. %												
% Standard	5%	7%	7%	8%	7%	7%	7%	5%	7%	7%	6%	6%



*Methodology: a) Monthly values based on patient's monthly average of all values present for the month; b) Quarter values are average of all values for quarter; c) Values not averaged use last value present at months end.

Northwest Kidney Centers - Home Hemodialysis
Quality Assurance Reports (Excludes patients in first 6 months of treatment)
Through period ending Dec. 31, 1999

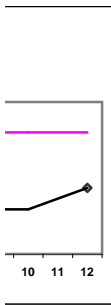
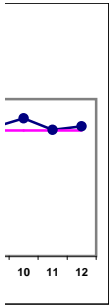
I,j - I.S. Dept.



*Methodology: a) Monthly values based on patient's monthly average of all values present for the month; b) Quarter values are average of all values for quarter; c) Values not averaged use last value present at months end.

Northwest Kidney Centers - Home Hemodialysis
Quality Assurance Reports (Excludes patients in first 6 months of treatment)
Through period ending Dec. 31, 1999

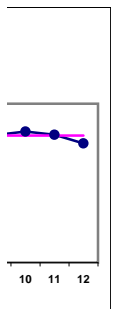
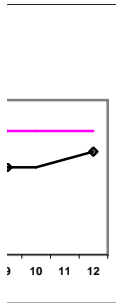
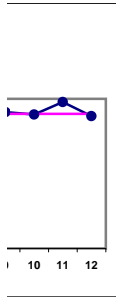
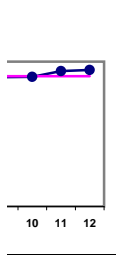
I,j - I.S. Dept.



*Methodology: a) Monthly values based on patient's monthly average of all values present for the month; b) Quarter values are average of all values for quarter; c) Values not averaged use last value present at months end.

Northwest Kidney Centers - Home Hemodialysis
Quality Assurance Reports (Excludes patients in first 6 months of treatment)
Through period ending Dec. 31, 1999

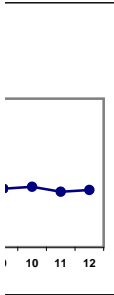
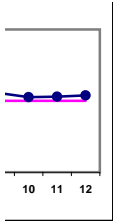
I,j - I.S. Dept.



*Methodology: a) Monthly values based on patient's monthly average of all values present for the month; b) Quarter values are average of all values for quarter; c) Values not averaged use last value present at months end.

Northwest Kidney Centers - Home Hemodialysis
Quality Assurance Reports (Excludes patients in first 6 months of treatment)
Through period ending Dec. 31, 1999

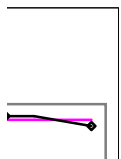
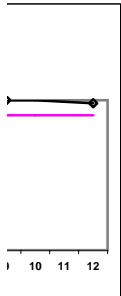
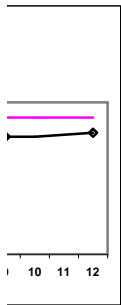
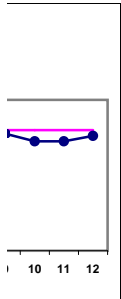
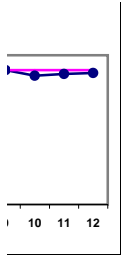
I,j - I.S. Dept.



*Methodology: a) Monthly values based on patient's monthly average of all values present for the month; b) Quarter values are average of all values for quarter; c) Values not averaged use last value present at months end.

Northwest Kidney Centers - Home Hemodialysis
Quality Assurance Reports (Excludes patients in first 6 months of treatment)
Through period ending Dec. 31, 1999

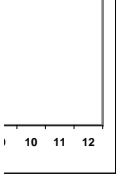
I,j - I.S. Dept.



*Methodology: a) Monthly values based on patient's monthly average of all values present for the month; b) Quarter values are average of all values for quarter; c) Values not averaged use last value present at months end.

Northwest Kidney Centers - Home Hemodialysis
Quality Assurance Reports (Excludes patients in first 6 months of treatment)
Through period ending Dec. 31, 1999

I,j - I.S. Dept.



*Methodology: a) Monthly values based on patient's monthly average of all values present for the month; b) Quarter values are average of all values for quarter; c) Values not averaged use last value present at months end.

Northwest Kidney Centers - Home Hemodialysis
Quality Assurance Reports (Excludes patients in first 6 months of treatment)
Through period ending Dec. 31, 1999

I,j - I.S. Dept.



*Methodology: a) Monthly values based on patient's monthly average of all values present for the month; b) Quarter values are average of all values for quarter; c) Values not averaged use last value present at months end.