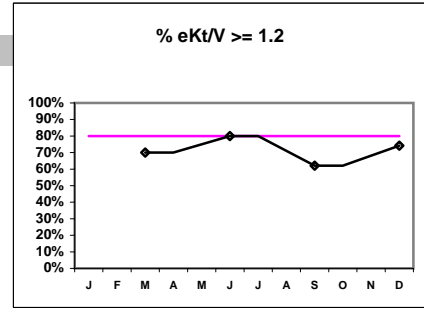


Northwest Kidney Centers - Home Hemodialysis
 Quality Assurance Reports (Excludes patients in first 6 months of treatment)
 Through period ending Dec. 30, 2000

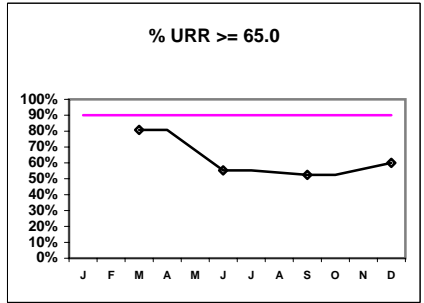
I.j - I.S. Dept.

I. ADEQUACY OF DIALYSIS

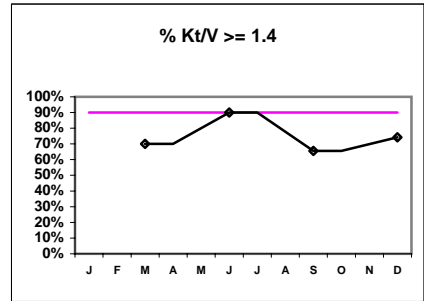
	J	F	M	A	M	J	J	A	S	O	N	D
# eKt/V			20			20			29			31
# eKt/V >= 1.2			14			16			18			23
Pop. Mean =		1.25			1.35		1.32				1.34	
Std. Deviation =		0.23			0.18		0.31				0.24	
Network Mean =												
Natl. Mean =												
% eKt/V >= 1.2			70%			80%			62%			74%



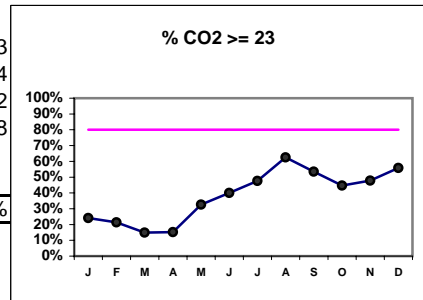
# URR		26		38		40		40		40
# URR >= 65.0		21		21		21		24		24
Pop. Mean =		71.6		63.7		63.1		63.2		63.2
Std. Deviation =		8.75		14.0		15.4		15.9		15.9
*Network Mean =		71.7		71.7		71.7		71.7		71.7
Natl. Mean =		68.2		68.2		68.2		68.2		68.2
% URR >= 65.0		81%		55%		53%		60%		60%
*Network % > 65.0		86%		86%		86%		86%		86%
Natl. % > 65.0		74%		74%		74%		74%		74%



# Kt/V		20		20		29		31
# Kt/V >= 1.4		14		18		19		23
Pop. Mean =		1.45		1.56		1.52		1.55
Std. Deviation =		0.27		0.23		0.34		0.28
Network Mean =								
*Natl. Mean =		1.40		1.40		1.40		1.40
% Kt/V >= 1.4		70%		90%		66%		74%
% Kt/V > 1.2		80%		95%		90%		87%
*Network % > 1.2		83%		83%		83%		83%
*Natl. % > 1.2		84%		84%		84%		84%



# CO2	54	42	47	46	46	40	42	40	43	47	46	43
# CO2 >= 23	13	9	7	7	15	16	20	25	23	21	22	24
Pop. Mean =	20	18	20	18	21	20	21	22	23	20	21	22
Std. Deviation =	3.54	6.39	4.39	6.13	3.53	5.79	6.53	4.81	2.95	5.59	5.19	4.58
Network Mean =												
*Natl. Mean =												
% CO2 >= 23	24%	21%	15%	15%	33%	40%	48%	63%	53%	45%	48%	56%



*Methodology: a) Monthly values based on patient's monthly average of all values present for the month; b) Quarter values are average of all values for quarter; c) Values not averaged use last value present at months end.

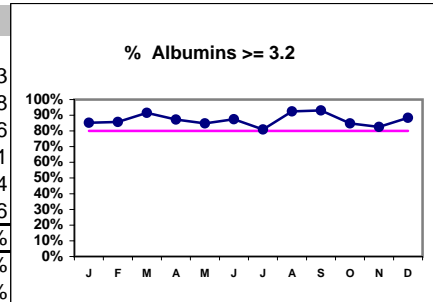
Northwest Kidney Centers - Home Hemodialysis
Quality Assurance Reports (Excludes patients in first 6 months of treatment)
Through period ending Dec. 30, 2000

I,j - I.S. Dept.

*Albumin values use BCP method

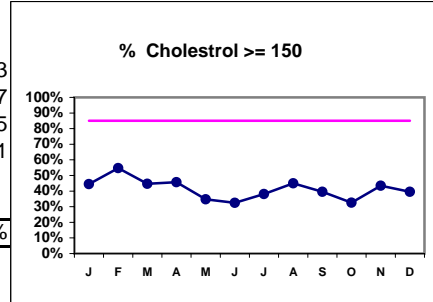
II. NUTRITION

	J	F	M	A	M	J	J	A	S	O	N	D
# Albumin	54	42	47	47	46	40	42	40	43	46	46	43
# Albumin >= 3.2	46	36	43	41	39	35	34	37	40	39	38	38
Pop. Mean =	3.6	3.6	3.6	3.6	3.6	3.6	3.6	3.9	3.7	3.6	3.5	3.6
Std. Deviation =	0.48	0.41	0.45	0.52	0.50	0.50	0.52	0.48	0.43	0.49	0.41	0.41
*Network Mean =	3.4	3.4	3.4	3.4	3.4	3.4	3.4	3.4	3.4	3.4	3.4	3.4
Natl. Mean =	3.6	3.6	3.6	3.6	3.6	3.6	3.6	3.6	3.6	3.6	3.6	3.6
% Albumin >= 3.2	85%	86%	91%	87%	85%	88%	81%	93%	93%	85%	83%	88%
*Network % >= 3.2	76%	76%	76%	76%	76%	76%	76%	76%	76%	76%	76%	76%
Natl. % >= 3.2	80%	80%	80%	80%	80%	80%	80%	80%	80%	80%	80%	80%
Natl. % >= 3.7	32%	32%	32%	32%	32%	32%	32%	32%	32%	32%	32%	32%

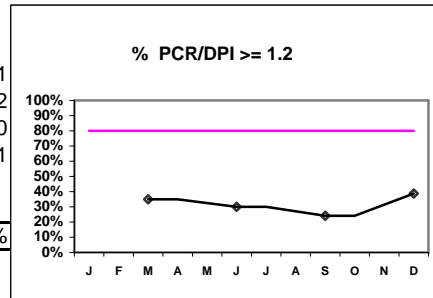


*Figures for 2000

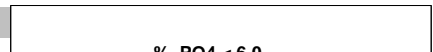
# Cholestrol	54	42	47	46	46	40	42	40	43	46	46	43
# Chol. >= 150	24	23	21	21	16	13	16	18	17	15	20	17
Pop. Mean =	152	146	150	141	148	136	141	145	149	137	149	145
Std. Deviation =	40.0	59.9	48.1	54.8	39.3	49.9	44.0	36.8	37.1	52.5	53.8	52.1
Network Mean =												
Natl. Mean =												
% Chol. >= 150	44%	55%	45%	46%	35%	33%	38%	45%	40%	33%	43%	40%



# PCR/DPI		20		20		29		31
# PCR/DPI >= 1.2		7		6		7		12
Pop. Mean =		1.04		1.07		0.98		1.10
Std. Deviation =		0.24		0.38		0.23		0.31
Network Mean =								
Natl. Mean =								
% PCR/DPI = >1.2		35%		30%		24%		39%



III. OSTEODYSTROPHY

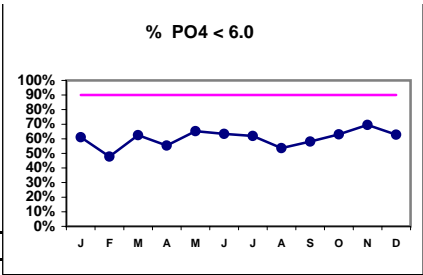


*Methodology: a) Monthly values based on patient's montly average of all values present for the month; b) Quarter values are average of all values for quarter; c) Values not averaged use last value present at months end.

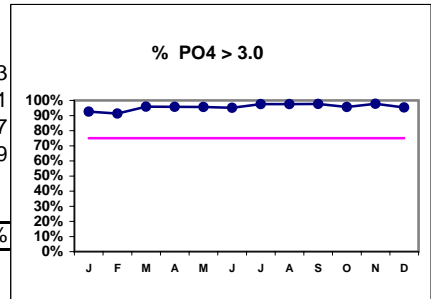
Northwest Kidney Centers - Home Hemodialysis
Quality Assurance Reports (Excludes patients in first 6 months of treatment)
Through period ending Dec. 30, 2000

I,j - I.S. Dept.

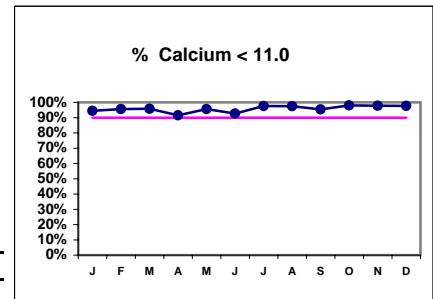
	J	F	M	A	M	J	J	A	S	O	N	D
# PO4	54	46	48	47	46	41	42	41	43	46	46	43
# PO4 < 6.0	33	22	30	26	30	26	26	22	25	29	32	27
Pop. Mean =	5.5	6.0	5.7	5.9	5.5	5.6	5.6	5.5	5.7	5.7	5.8	5.7
Std. Deviation	1.72	1.47	1.55	2.13	1.55	1.55	2.02	1.59	1.55	1.53	1.59	1.49
Network Mean =												
Natl. Mean =												
% PO4 < 6.0	61%	48%	63%	55%	65%	63%	62%	54%	58%	63%	70%	63%



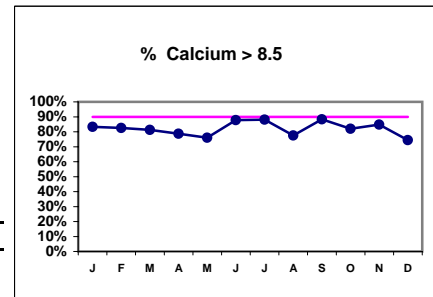
# PO4	54	46	48	47	46	41	42	41	43	46	46	43
# PO4 > 3.0	50	42	46	45	44	39	41	40	42	44	45	41
Pop. Mean =	5.5	6.0	5.7	5.9	5.5	5.6	5.6	5.5	5.7	5.7	5.8	5.7
Std. Deviation	1.72	1.47	1.55	2.13	1.55	1.55	2.02	1.59	1.55	1.53	1.59	1.49
Network Mean =												
Natl. Mean =												
% PO4 > 3.0	93%	91%	96%	96%	96%	95%	98%	98%	98%	96%	98%	95%



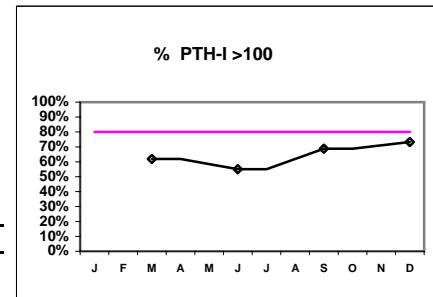
# Calcium	54	46	48	47	46	41	42	40	43	50	46	43
# Calcium < 11.0	51	44	46	43	44	38	41	39	41	49	45	42
Pop. Mean =	9.3	9.5	9.4	9.5	9.4	9.3	9.6	9.3	9.5	9.2	9.3	9.2
Std. Deviation	0.82	0.88	0.90	1.04	1.05	0.91	0.90	0.99	0.79	0.74	0.87	1.00
Network Mean =												
Natl. Mean =												
% Calcium < 11.0	94%	96%	96%	91%	96%	93%	98%	98%	95%	98%	98%	98%



# Calcium	54	46	48	47	46	41	42	40	43	50	46	43
# Calcium > 8.5	45	38	39	37	35	36	37	31	38	41	39	32
Pop. Mean =	9.3	9.5	9.4	9.5	9.4	9.3	9.6	9.3	9.5	9.2	9.3	9.2
Std. Deviation =	0.82	0.88	0.90	1.04	1.05	0.91	0.90	0.99	0.79	0.74	0.87	1.00
Network Mean =												
Natl. Mean =												
% Calcium > 8.5	83%	83%	81%	79%	76%	88%	88%	78%	88%	82%	85%	74%

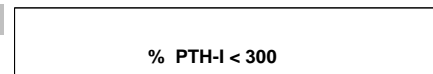


# PTH-I		21		20		16		30
# PTH-I > 100		13		11		11		22
Pop. Mean =		180		132		152		246
Std. Deviation =		398		265		324		330
Network Mean =								
Natl. Mean =								
% PTH-I > 100		62%		55%		69%		73%



III. OSTEODYSTROPHY - CONT.

J F M A M J J A S O N D

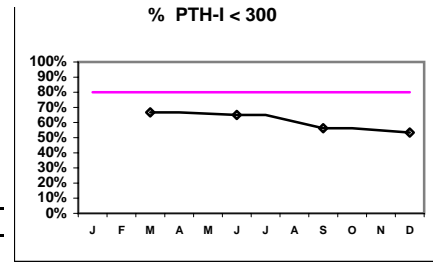


*Methodology: a) Monthly values based on patient's monthly average of all values present for the month; b) Quarter values are average of all values for quarter; c) Values not averaged use last value present at months end.

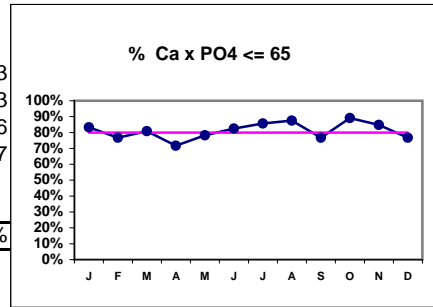
Northwest Kidney Centers - Home Hemodialysis
Quality Assurance Reports (Excludes patients in first 6 months of treatment)
Through period ending Dec. 30, 2000

I,j - I.S. Dept.

# PTH-I	21	20	16	30
# PTH-I < 300	14	13	9	16
Pop. Mean =	180	132	152	246
Std. Deviation =	398	265	324	330
Network Mean =				
Natl. Mean =				
% PTH-I < 300	67%	65%	56%	53%

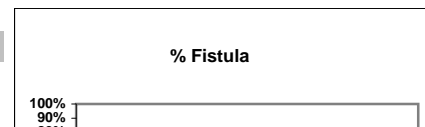


# Ca x PO4	54	43	47	46	46	40	42	40	43	46	46	43
# Ca x PO4 <= 65	45	33	38	33	36	33	36	35	33	41	39	33
Pop. Mean =	50.9	53.1	52.7	53.9	51.2	50.8	53.0	48.7	53.7	49.5	52.0	50.6
Std. Deviation =	15.6	19.3	16.6	20.6	14.1	15.5	20.4	14.9	13.2	19.1	15.7	14.7
Network Mean =												
Natl. Mean =												
% Ca x PO4 <= 65	83%	77%	81%	72%	78%	83%	86%	88%	77%	89%	85%	77%



IV. ACCESS

# Access	54	46	48	49	46	42	43	41	43	50	48	44
----------	----	----	----	----	----	----	----	----	----	----	----	----



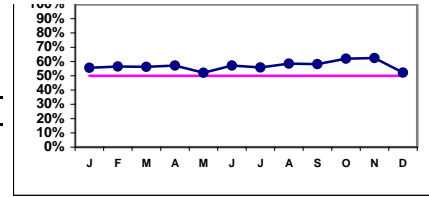
*Methodology: a) Monthly values based on patient's monthly average of all values present for the month; b) Quarter values are average of all values for quarter; c) Values not averaged use last value present at months end.

Northwest Kidney Centers - Home Hemodialysis
Quality Assurance Reports (Excludes patients in first 6 months of treatment)

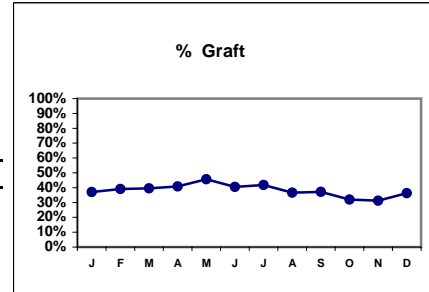
I.j - I.S. Dept.

Through period ending Dec. 30, 2000

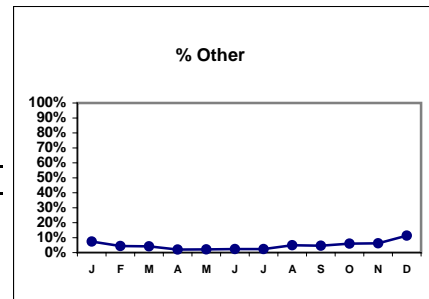
# Fistula	30	26	27	28	24	24	24	24	25	31	30	23
Network %												
Natl. % - 1999	26%	26%	26%	26%	26%	26%	26%	26%	26%	26%	26%	26%
% Fistula	56%	57%	56%	57%	52%	57%	56%	59%	58%	62%	63%	52%



# Access	54	46	48	49	46	42	43	41	43	50	48	44
# Graft	20	18	19	20	21	17	18	15	16	16	15	16
Network %												
Natl. %												
% Graft	37%	39%	40%	41%	46%	40%	42%	37%	37%	32%	31%	36%

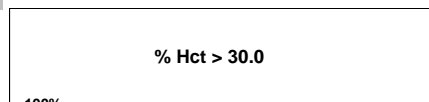


# Access	54	46	48	49	46	42	43	41	43	50	48	44
# Other	4	2	2	1	1	1	1	2	2	3	3	5
Network %												
Natl. %												
% Other	7%	4%	4%	2%	2%	2%	2%	5%	5%	6%	6%	11%



V. ANEMIA

	J	F	M	A	M	J	J	A	S	O	N	D
# Hct	47	40	37	41	38	35	35	32	35	44	39	33
# Hct > 30.0	43	33	32	38	34	30	34	30	34	41	34	30



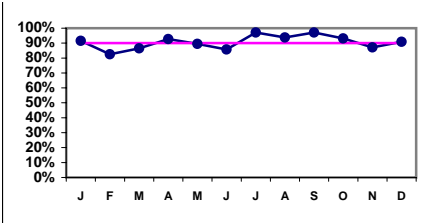
*Methodology: a) Monthly values based on patient's monthly average of all values present for the month; b) Quarter values are average of all values for quarter; c) Values not averaged use last value present at months end.

Northwest Kidney Centers - Home Hemodialysis
Quality Assurance Reports (Excludes patients in first 6 months of treatment)

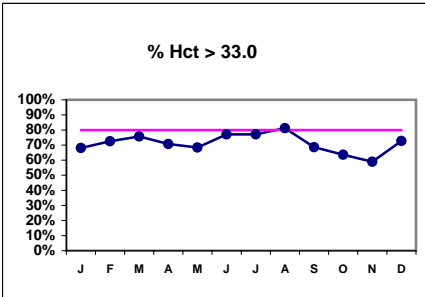
I.j - I.S. Dept.

Through period ending Dec. 30, 2000

Pop. Mean =	35.2	35.1	35.5	35.4	36.2	36.2	36.5	36.0	34.8	34.8	34.7	36.1
Std. Deviation =	4.56	4.41	4.79	3.95	4.85	4.56	3.87	4.09	3.34	4.56	4.62	4.77
Network Mean =	33.9	33.9	33.9	33.9	33.9	33.9	33.9	33.9	33.9	33.9	33.9	33.9
Natl. Mean =	34.2	34.2	34.2	34.2	34.2	34.2	34.2	34.2	34.2	34.2	34.2	34.2
% Hct > 30.0	91%	83%	86%	93%	89%	86%	97%	94%	97%	93%	87%	91%
*% Network > 30.0	89%	89%	89%	89%	89%	89%	89%	89%	89%	89%	89%	89%
% Natl. > 30.0	79%	79%	79%	79%	79%	79%	79%	79%	79%	79%	79%	79%

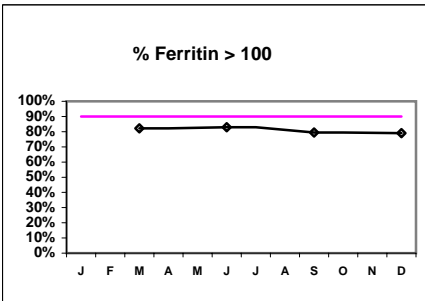


# Hct	47	40	37	41	38	35	35	32	35	44	39	33
# Hct > 33.0	32	29	28	29	26	27	27	26	24	28	23	24
Pop. Mean =	35.2	35.1	35.5	35.4	36.2	36.2	36.5	36.0	34.8	34.8	34.7	36.1
Std. Deviation =	4.56	4.41	4.79	3.95	4.85	4.56	3.87	4.09	3.34	4.56	4.62	4.77
*Network Mean =	33.9	33.9	33.9	33.9	33.9	33.9	33.9	33.9	33.9	33.9	33.9	33.9
*Natl. Mean =	34.2	34.2	34.2	34.2	34.2	34.2	34.2	34.2	34.2	34.2	34.2	34.2
% Hct > 33.0	68%	73%	76%	71%	68%	77%	77%	81%	69%	64%	59%	73%
*% Network > 33.0	74%	74%	74%	74%	74%	74%	74%	74%	74%	74%	74%	74%
% Natl. > 33.0	68%	68%	68%	68%	68%	68%	68%	68%	68%	68%	68%	68%

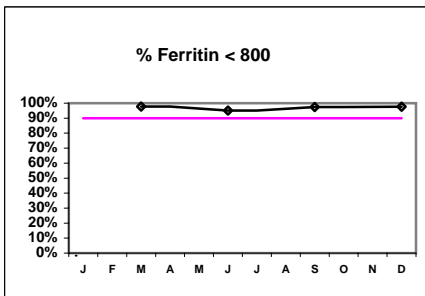


Iron Profile

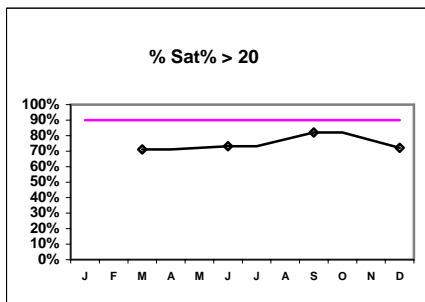
# Ferritin			45		41		39		43			
# Ferritin > 100			37		34		31		34			
Pop. Mean =			246		359		252		268			
Std. Deviation =			177		270		195		190			
*Network Mean =			428		428		428		428			
Natl. Mean =												
% Ferritin > 100			82%		83%		79%		79%			
*% Network > 100			86%		86%		86%		86%			



# Ferritin			45		41		39		43			
# Ferritin < 800			44		39		38		42			
Pop. Mean =			246		359		252		268			
Std. Deviation =			177		270		195		190			
*Network Mean =			428		428		428		428			
Natl. Mean =												
% Ferritin < 800			98%		95%		97%		98%			

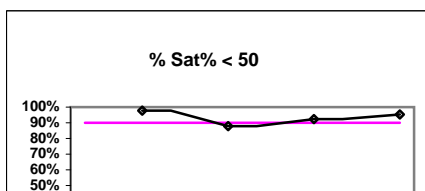


# % Sat			45		41		39		43			
# % Sat > 20			32		30		32		31			
Pop. Mean =			26.6		30.2		28.3		27.1			
Std. Deviation =			10.2		15.9		10.2		14.1			
*Network Mean =			27.0		27.0		27.0		27.0			
Natl. Mean =												
% Sat% > 20			71%		73%		82%		72%			
*% Network > 20			72%		72%		72%		72%			



V. ANEMIA - CONT.

# % Sat			45		41		39		43			
# % Sat < 50			44		36		36		41			
Pop. Mean =			26.6		30.2		28.3		27.1			



*Methodology: a) Monthly values based on patient's monthly average of all values present for the month; b) Quarter values are average of all values for quarter; c) Values not averaged use last value present at months end.

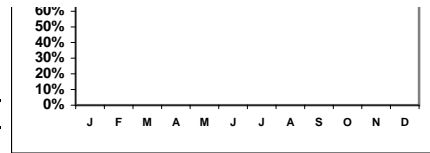
Northwest Kidney Centers - Home Hemodialysis
Quality Assurance Reports (Excludes patients in first 6 months of treatment)

I,j - I.S. Dept.

Through period ending Dec. 30, 2000

Std. Deviation =	10.2	15.9	10.2	14.1
*Network Mean =	27.0	27.0	27.0	27.0
Natl. Mean =				
% Sat% < 50	98%	88%	92%	95%

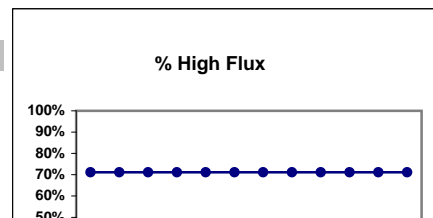
*Figures for 2000



DO NOT USE THIS PAGE!!!

VI. OTHERS

	D	D	D	D	D	D	D	D	D	D	D	D
<u>Dialyzer ratios</u>												
# Dialyzers	52	52	52	52	52	52	52	52	52	52	52	52
# High Flux	37	37	37	37	37	37	37	37	37	37	37	37

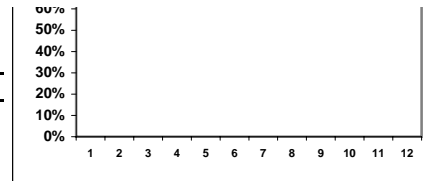


*Methodology: a) Monthly values based on patient's monthly average of all values present for the month; b) Quarter values are average of all values for quarter; c) Values not averaged use last value present at months end.

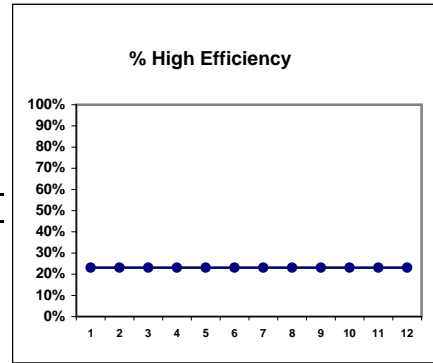
Northwest Kidney Centers - Home Hemodialysis
Quality Assurance Reports (Excludes patients in first 6 months of treatment)
Through period ending Dec. 30, 2000

I.j - I.S. Dept.

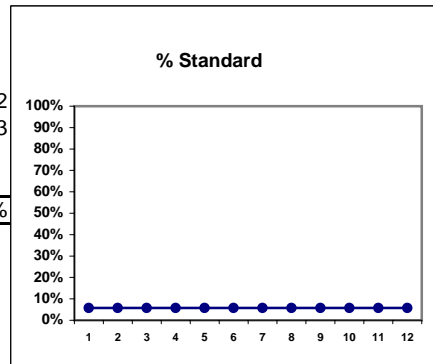
Network %												
Natl. %												
% High Flux	71%	71%	71%	71%	71%	71%	71%	71%	71%	71%	71%	71%



# Dialyzers	52	52	52	52	52	52	52	52	52	52	52	52
# High Efficiency	12	12	12	12	12	12	12	12	12	12	12	12
Network %												
Natl. %												
% High Efficiency	23%	23%	23%	23%	23%	23%	23%	23%	23%	23%	23%	23%



# Dialyzers	52	52	52	52	52	52	52	52	52	52	52	52
# Standard	3	3	3	3	3	3	3	3	3	3	3	3
Network %												
Natl. %												
% Standard	6%	6%	6%	6%	6%	6%	6%	6%	6%	6%	6%	6%



*Methodology: a) Monthly values based on patient's monthly average of all values present for the month; b) Quarter values are average of all values for quarter; c) Values not averaged use last value present at months end.