

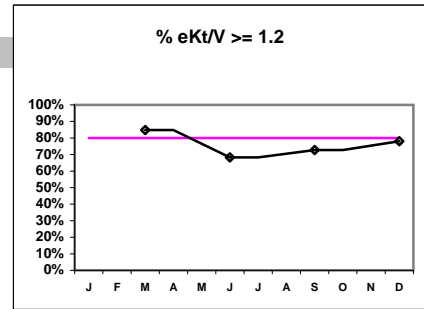
Northwest Kidney Centers - Home Hemodialysis
 Quality Assurance Reports (Excludes patients in first 6 months of treatment)
 Through period ending Dec. 31, 2001

I,j - I.S. Dept.

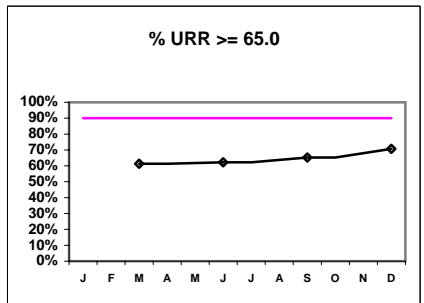
Note: Monthly values with an * are PACLAB values - as of July 2001

I. ADEQUACY OF DIALYSIS

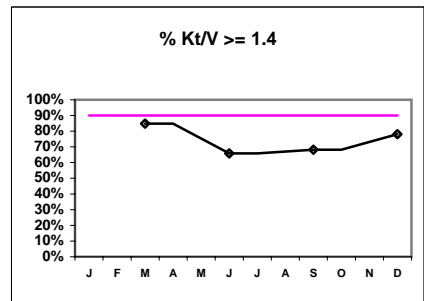
	J	F	M	A	M	J	J	A	S	O	N	D
# eKt/V			33			41			44			41
# eKt/V >= 1.2			28			28			32			32
Pop. Mean =			1.39			1.25			1.37			1.35
Std. Deviation =			0.22			0.28			0.41			0.32
Network Mean =												
Natl. Mean =												
% eKt/V >= 1.2			85%			68%			73%			78%



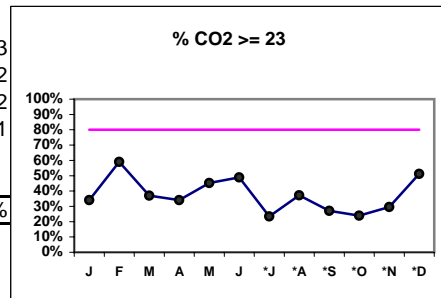
# URR			44			45			46			41
# URR >= 65.0			27			28			30			29
Pop. Mean =			64.9			64.2			66.6			68.8
Std. Deviation =			14.1			15.2			13.5			13.6
*Network Mean =			71.7			71.7			71.7			71.7
Natl. Mean =			68.2			68.2			68.2			68.2
% URR >= 65.0			61%			62%			65%			71%
*Network % > 65.0			86%			86%			86%			86%
*Natl. % > 65.0			82%			82%			82%			82%



# Kt/V			33			41			44			41
# Kt/V >= 1.4			28			27			30			32
Pop. Mean =			1.62			1.46			1.61			1.58
Std. Deviation =			0.28			0.29			0.45			0.35
Network Mean =												
Natl. Mean 1999 =			1.40			1.40			1.40			1.40
% Kt/V >= 1.4			85%			66%			68%			78%
% Kt/V > 1.2			94%			83%			91%			88%
Network > 1.2 '99			83%			83%			83%			83%
Natl. % > 1.2 - 2000			86%			86%			86%			86%



# CO2	44	44	46	44	42	45	47	43	48	46	44	43
# CO2 >= 23	15	26	17	15	19	22	11	16	13	11	13	22
Pop. Mean =	20	23	22	21	22	22	20	21	21	20	21	22
Std. Deviation =	4.37	2.85	3.68	3.12	3.4	3.16	4.19	5.01	2.64	5.5	5.29	4.31
Network Mean =												
*Natl. Mean =												
% CO2 >= 23	34%	59%	37%	34%	45%	49%	23%	37%	27%	24%	30%	51%



*Methodology: a) Monthly values based on patient's monthly average of all values present for the month; b) Quarter values are average of all values for quarter; c) Values not averaged use last value present at months end.

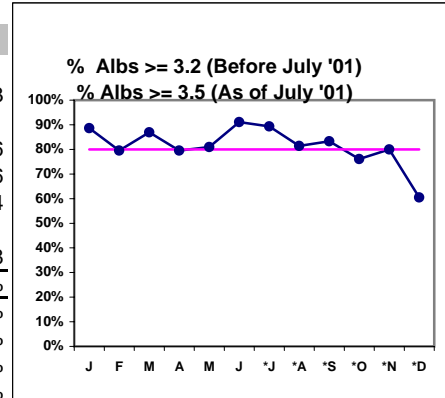
Northwest Kidney Centers - Home Hemodialysis
 Quality Assurance Reports (Excludes patients in first 6 months of treatment)
 Through period ending Dec. 31, 2001

I,j - I.S. Dept.

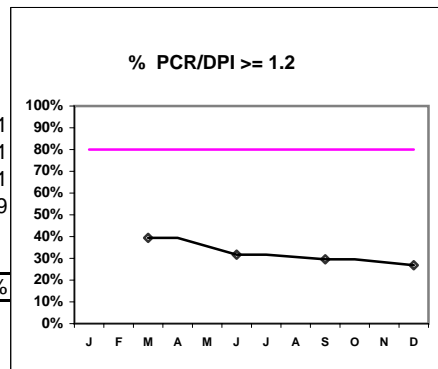
*Albumin values use BCG method - as of July 2001

II. NUTRITION

	J	F	M	A	M	J	*J	*A	*S	*O	*N	*D
# Albumin	44	44	46	44	42	45	47	43	48	46	45	43
# Albumin >= 3.2	39	35	40	35	34	41						
# Albumin >= 3.5							42	35	40	35	36	26
Pop. Mean =	3.6	3.5	3.5	3.5	3.5	3.6	3.7	3.7	3.7	3.6	3.7	3.6
Std. Deviation =	0.45	0.40	0.42	0.43	0.36	0.34	0.26	0.26	0.25	0.33	0.35	0.34
Network Mean =												
Natl. Mean =	3.8	3.8	3.8	3.8	3.8	3.8	3.8	3.8	3.8	3.8	3.8	3.8
% Alb >= 3.2 or 3.5	89%	80%	87%	80%	81%	91%	89%	81%	83%	76%	80%	60%
Home % >= 3.7							60%	51%	48%	54%	60%	37%
Home % >= 4.0							19%	14%	15%	9%	29%	14%
*Natl. % >= 3.5-BCG							80%	80%	80%	80%	80%	80%
*Natl. % >= 4.0-BCG							29%	29%	29%	29%	29%	29%
*Network Mean =	77%	77%	77%	77%	77%	77%	77%	77%	77%	77%	77%	77%
*Figures for 2000												



# PCR/DPI	33	41	44	41
# PCR/DPI >= 1.2	13	13	13	11
Pop. Mean =	1.14	1.02	1.01	1.01
Std. Deviation =	0.31	0.32	0.24	0.29
Network Mean =				
Natl. Mean =				
% PCR/DPI = >1.2	39%	32%	30%	27%



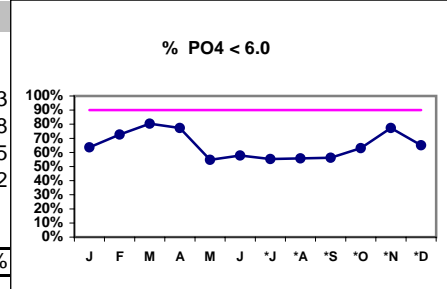
*Methodology: a) Monthly values based on patient's monthly average of all values present for the month; b) Quarter values are average of all values for quarter; c) Values not averaged use last value present at months end.

Northwest Kidney Centers - Home Hemodialysis
Quality Assurance Reports (Excludes patients in first 6 months of treatment)
Through period ending Dec. 31, 2001

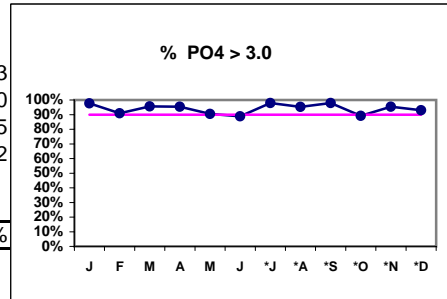
I,j - I.S. Dept.

III. OSTEODYSTROPHY

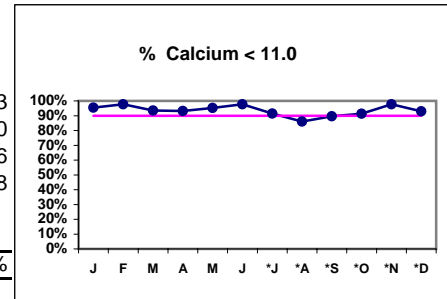
	J	F	M	A	M	J	*J	*A	*S	*O	*N	*D
# PO4	44	44	46	44	42	45	47	43	48	46	44	43
# PO4 < 6.0	28	32	37	34	23	26	26	24	27	29	34	28
Pop. Mean =	5.6	5.1	5.1	5.5	5.5	5.4	5.9	5.6	6.1	5.5	5.2	5.5
Std. Deviation	1.86	1.64	1.62	1.7	1.72	1.87	2.23	1.46	2.19	1.75	1.6	1.42
Network Mean =												
Natl. Mean =												
% PO4 < 6.0	64%	73%	80%	77%	55%	58%	55%	56%	56%	63%	77%	65%



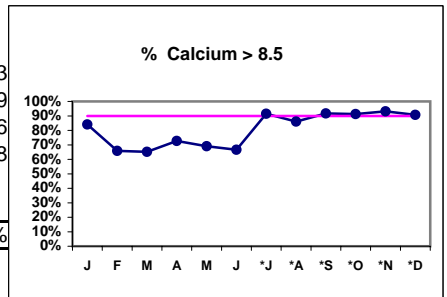
# PO4	44	44	46	44	42	45	47	43	48	46	44	43
# PO4 > 3.0	43	40	44	42	38	40	46	41	47	41	42	40
Pop. Mean =	5.6	5.1	5.1	5.5	5.5	5.4	5.9	5.6	6.1	5.5	5.2	5.5
Std. Deviation	1.86	1.64	1.62	1.7	1.72	1.87	2.23	1.46	2.19	1.75	1.6	1.42
Network Mean =												
Natl. Mean =												
% PO4 > 3.0	98%	91%	96%	95%	90%	89%	98%	95%	98%	89%	95%	93%



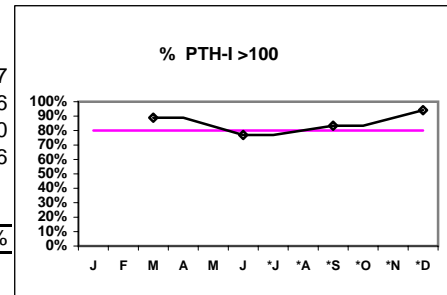
# Calcium	44	44	46	44	42	45	47	43	48	46	44	43
# Calcium < 11.0	42	43	43	41	40	44	43	37	43	42	43	40
Pop. Mean =	9.3	9.0	9.1	9.1	9.0	9.1	9.7	9.7	9.8	9.5	9.6	9.6
Std. Deviation	0.94	1.00	1.04	1.02	1.19	0.81	0.94	1.01	0.89	1.18	0.83	0.88
Network Mean =												
Natl. Mean =												
% Calcium < 11.0	95%	98%	93%	93%	95%	98%	91%	86%	90%	91%	98%	93%



# Calcium	44	44	46	44	42	45	47	43	48	46	44	43
# Calcium > 8.5	37	29	30	32	29	30	43	37	44	42	41	39
Pop. Mean =	9.3	9.0	9.1	9.1	9.0	9.1	9.7	9.7	9.8	9.5	9.6	9.6
Std. Deviation =	0.94	1.00	1.04	1.02	1.19	0.81	0.94	1.01	0.89	1.18	0.83	0.88
Network Mean =												
Natl. Mean =												
% Calcium > 8.5	84%	66%	65%	73%	69%	67%	91%	86%	92%	91%	93%	91%



# PTH-I		18		26		24		17
# PTH-I > 100		16		20		20		16
Pop. Mean =		190		320		216		480
Std. Deviation =		381		252		313		386
Network Mean =								
Natl. Mean =								
% PTH-I > 100		89%		77%		83%		94%



III. OSTEODYSTROPHY - CONT.

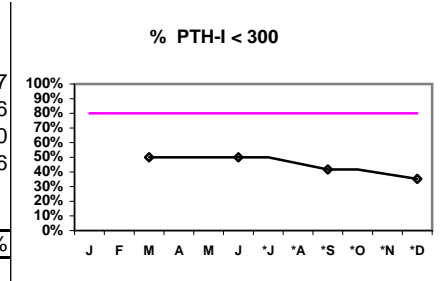
*Methodology: a) Monthly values based on patient's monthly average of all values present for the month; b) Quarter values are average of all values for quarter; c) Values not averaged use last value present at months end.

Northwest Kidney Centers - Home Hemodialysis
Quality Assurance Reports (Excludes patients in first 6 months of treatment)

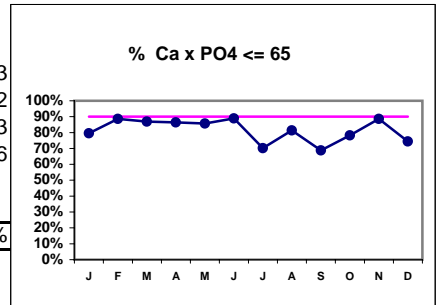
I,j - I.S. Dept.

Through period ending Dec. 31, 2001

	J	F	M	A	M	J	*J	*A	*S	*O	*N	*D
# PTH-I			18			26			24			17
# PTH-I < 300			9			13			10			6
Pop. Mean =			190			320			216			480
Std. Deviation =			381			252			313			386
Network Mean =												
Natl. Mean =												
% PTH-I < 300			50%			50%			42%			35%



	J	F	M	A	M	J	*J	*A	*S	*O	*N	*D
# Ca x PO4	44	44	46	44	42	45	47	43	48	46	44	43
# Ca x PO4 <= 65	35	39	40	38	36	40	33	35	33	36	39	32
Pop. Mean =	51.3	46.2	46.2	49.5	49.8	48.8	57.7	52.7	59.8	51.8	47.9	51.3
Std. Deviation =	15.2	15.5	15.7	15.1	15.1	15.8	25.2	15.9	22.6	17.3	15.6	15.6
Network Mean =												
Natl. Mean =												
% Ca x PO4 <= 65	80%	89%	87%	86%	86%	89%	70%	81%	69%	78%	89%	74%



IV. ACCESS

J F M A M J J A S O N D



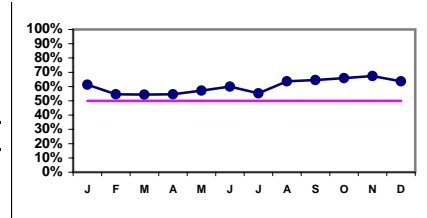
*Methodology: a) Monthly values based on patient's monthly average of all values present for the month; b) Quarter values are average of all values for quarter; c) Values not averaged use last value present at months end.

Northwest Kidney Centers - Home Hemodialysis
Quality Assurance Reports (Excludes patients in first 6 months of treatment)

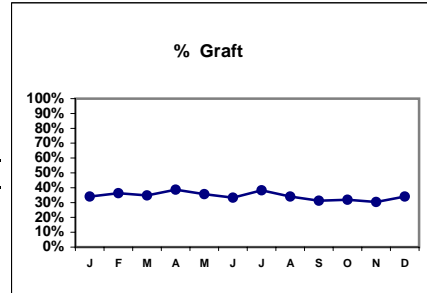
I,j - I.S. Dept.

Through period ending Dec. 31, 2001

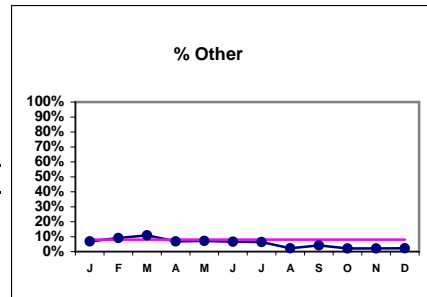
# Access	44	44	46	44	42	45	47	44	48	47	46	44
# Fistula	27	24	25	24	24	27	26	28	31	31	31	28
Network %												
Natl. % - 2000	30%	30%	30%	30%	30%	30%	30%	30%	30%	30%	30%	30%
% Fistula	61%	55%	54%	55%	57%	60%	55%	64%	65%	66%	67%	64%



# Access	44	44	46	44	42	45	47	44	48	47	46	44
# Graft	15	16	16	17	15	15	18	15	15	15	14	15
Network %												
Natl. %												
% Graft	34%	36%	35%	39%	36%	33%	38%	34%	31%	32%	30%	34%



# Access	44	44	46	44	42	45	47	44	48	47	46	44
# Other	3	4	5	3	3	3	3	1	2	1	1	1
Network %												
Natl. %												
% Other	7%	9%	11%	7%	7%	7%	6%	2%	4%	2%	2%	2%



*Hct. values use Coulter method - as of July 2001

V. ANEMIA

	J	F	M	A	M	J	*J	*A	*S	*O	*N	*D
# Hct	38	38	34	38	39	35	44	42	45	40	45	41

% Hct > 30.0

*Methodology: a) Monthly values based on patient's monthly average of all values present for the month; b) Quarter values are average of all values for quarter; c) Values not averaged use last value present at months end.

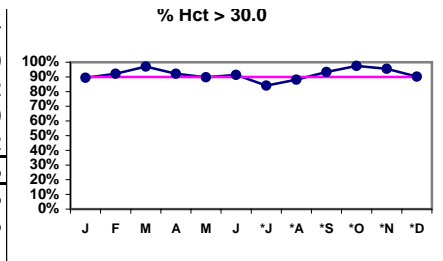
Northwest Kidney Centers - Home Hemodialysis
Quality Assurance Reports (Excludes patients in first 6 months of treatment)

I.j - I.S. Dept.

Through period ending Dec. 31, 2001

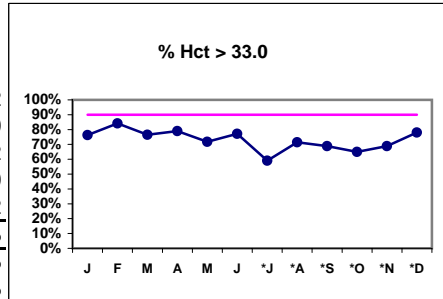
# Hct > 30.0	34	35	33	35	35	32	37	37	42	39	43	37
Pop. Mean =	35.5	35.9	36.2	36.1	35.3	35.5	34.5	35.3	35.5	35.1	35.7	35.9
Std. Deviation =	4.48	4.59	4.07	4.37	3.93	3.93	4.61	4.41	3.84	3.58	4.37	4.22
Network Mean =	33.9	33.9	33.9	33.9	33.9	33.9	33.9	33.9	33.9	33.9	33.9	33.9
Natl. Mean =	34.2	34.2	34.2	34.2	34.2	34.2	34.2	34.2	34.2	34.2	34.2	34.2
% Hct > 30.0	89%	92%	97%	92%	90%	91%	84%	88%	93%	98%	96%	90%
*% Network > 30.0	89%	89%	89%	89%	89%	89%	89%	89%	89%	89%	89%	89%
% Natl. > 30.0	79%	79%	79%	79%	79%	79%	79%	79%	79%	79%	79%	79%

* Figures for 2000



# Hct	38	38	34	38	39	35	44	42	45	40	45	41
# Hct > 33.0	29	32	26	30	28	27	26	30	31	26	31	32
Pop. Mean =	35.5	35.9	36.2	36.1	35.3	35.5	34.5	35.3	35.5	35.1	35.7	35.9
Std. Deviation =	4.48	4.59	4.07	4.37	3.93	3.93	4.61	4.41	3.84	3.58	4.37	4.22
*Network Mean =	33.9	33.9	33.9	33.9	33.9	33.9	33.9	33.9	33.9	33.9	33.9	33.9
*Natl. Mean =	34.2	34.2	34.2	34.2	34.2	34.2	34.2	34.2	34.2	34.2	34.2	34.2
% Hct > 33.0	76%	84%	76%	79%	72%	77%	59%	71%	69%	65%	69%	78%
*% Network > 33.0	74%	74%	74%	74%	74%	74%	74%	74%	74%	74%	74%	74%
*% Natl. > 33.0	73%	73%	73%	73%	73%	73%	73%	73%	73%	73%	73%	73%

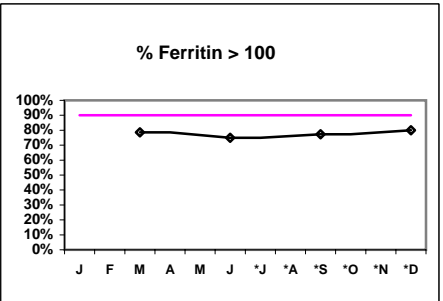
* Figures for 2000



Iron Profile

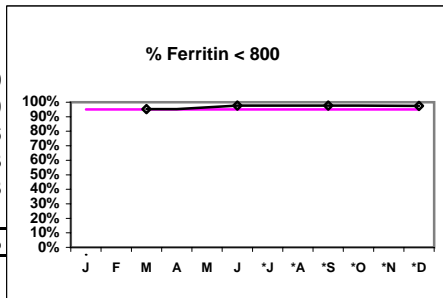
# Ferritin	42	44	44	40
# Ferritin > 100	33	33	34	32
Pop. Mean =	261	271	256	276
Std. Deviation =	225	191	193	193
*Network Mean =	428	428	428	428
Natl. Mean =				
% Ferritin > 100	79%	75%	77%	80%
*% Network > 100	86%	86%	86%	86%

* Figures for 2000



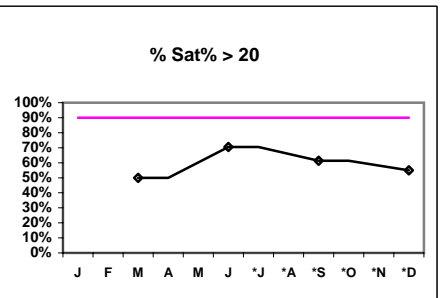
# Ferritin	42	44	44	40
# Ferritin < 800	40	43	43	39
Pop. Mean =	261	271	256	276
Std. Deviation =	225	191	193	193
*Network Mean =	428	428	428	428
Natl. Mean =				
% Ferritin < 800	95%	98%	98%	98%

* Figures for 2000



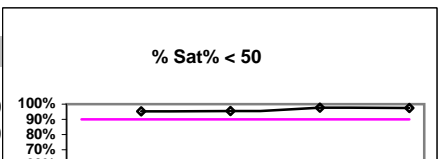
# % Sat	42	44	44	40
# % Sat > 20	21	31	27	22
Pop. Mean =	23.8	28.2	24.6	23.6
Std. Deviation =	9.9	15.2	7.8	8.8
*Network Mean =	27.0	27.0	27.0	27.0
Natl. Mean =				
% Sat% > 20	50%	70%	61%	55%
*% Network > 20	72%	72%	72%	72%

* Figures for 2000



V. ANEMIA - CONT.

# % Sat	42	44	44	40
# % Sat < 50	40	42	43	39



*Methodology: a) Monthly values based on patient's monthly average of all values present for the month; b) Quarter values are average of all values for quarter; c) Values not averaged use last value present at months end.

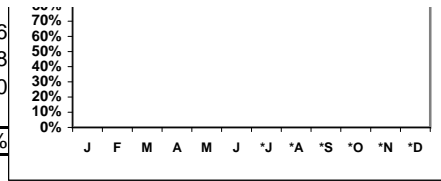
Northwest Kidney Centers - Home Hemodialysis
Quality Assurance Reports (Excludes patients in first 6 months of treatment)

I,j - I.S. Dept.

Through period ending Dec. 31, 2001

Pop. Mean =	23.8	28.2	24.6	23.6
Std. Deviation =	9.9	15.2	7.8	8.8
*Network Mean =	27.0	27.0	27.0	27.0
Natl. Mean =				
% Sat% < 50	95%	95%	98%	98%

*Figures for 2000

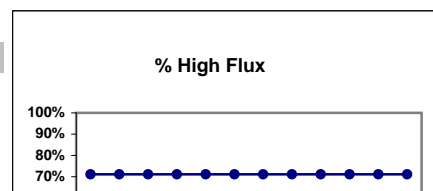


DO NOT USE THIS PAGE!!!

VI. OTHERS

Dialyzer ratios

	D	D	D	D	D	D	D	D	D	D	D	D
# Dialyzers	52	52	52	52	52	52	52	52	52	52	52	52



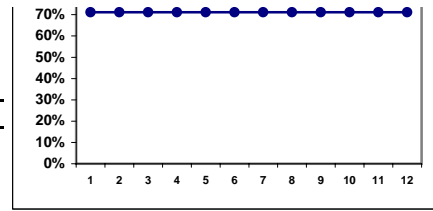
*Methodology: a) Monthly values based on patient's monthly average of all values present for the month; b) Quarter values are average of all values for quarter; c) Values not averaged use last value present at months end.

Northwest Kidney Centers - Home Hemodialysis
Quality Assurance Reports (Excludes patients in first 6 months of treatment)

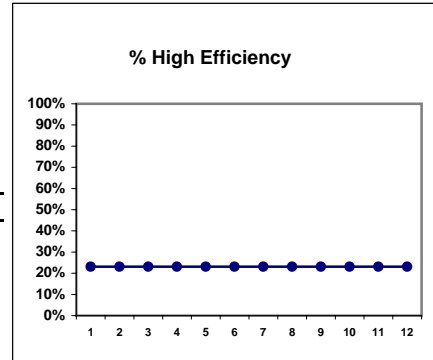
I,j - I.S. Dept.

Through period ending Dec. 31, 2001

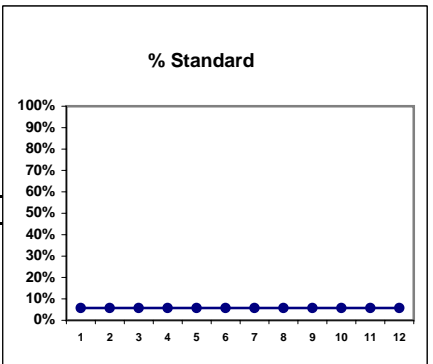
# High Flux	37	37	37	37	37	37	37	37	37	37	37	37
Network %												
Natl. %												
% High Flux	71%	71%	71%	71%	71%	71%	71%	71%	71%	71%	71%	71%



# Dialyzers	52	52	52	52	52	52	52	52	52	52	52	52
# High Efficiency	12	12	12	12	12	12	12	12	12	12	12	12
Network %												
Natl. %												
% High Efficiency	23%	23%	23%	23%	23%	23%	23%	23%	23%	23%	23%	23%



# Dialyzers	52	52	52	52	52	52	52	52	52	52	52	52
# Standard	3	3	3	3	3	3	3	3	3	3	3	3
Network %												
Natl. %												
% Standard	6%	6%	6%	6%	6%	6%	6%	6%	6%	6%	6%	6%



*Methodology: a) Monthly values based on patient's monthly average of all values present for the month; b) Quarter values are average of all values for quarter; c) Values not averaged use last value present at months end.