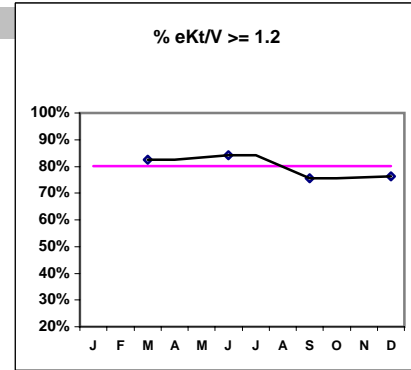


Northwest Kidney Centers - Home Hemodialysis
 Quality Assurance Reports (Excludes patients in first 3 months of treatment - as of Dec. 31, 2002)
 Through period ending Dec. 31, 2002

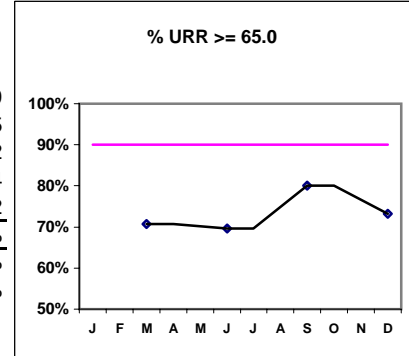
I. ADEQUACY OF DIALYSIS

| | J | F | M | A | M | J | J | A | S | O | N | D |
|--------------------------|---|---|------------|---|---|------------|---|---|------------|---|---|------------|
| # eKt/V | | | 40 | | | 44 | | | 41 | | | 38 |
| # eKt/V >= 1.2 | | | 33 | | | 37 | | | 31 | | | 29 |
| Pop. Mean = | | | 1.35 | | | 1.41 | | | 1.44 | | | 1.37 |
| Std. Deviation = | | | 0.29 | | | 0.34 | | | 0.42 | | | 0.29 |
| Network Mean = | | | | | | | | | | | | |
| Natl. Mean = | | | | | | | | | | | | |
| % eKt/V >= 1.2 | | | 83% | | | 84% | | | 76% | | | 76% |

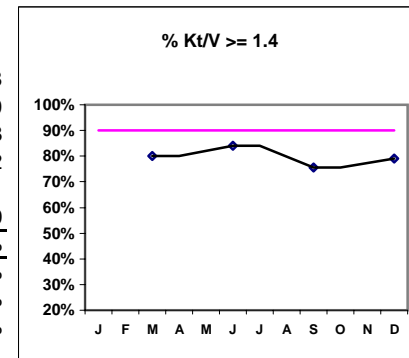


| | | | | |
|-------------------------|------------|------------|------------|------------|
| # URR | 41 | 46 | 45 | 41 |
| # URR >= 65.0 | 29 | 32 | 36 | 30 |
| Pop. Mean = | 67.5 | 69.0 | 71.3 | 69.5 |
| Std. Deviation = | 12.2 | 11.8 | 9.9 | 11.2 |
| *Network Mean = | 72.4 | 72.4 | 72.4 | 72.4 |
| Natl. Mean = | 68.2 | 68.2 | 68.2 | 68.2 |
| % URR >= 65.0 | 71% | 70% | 80% | 73% |
| *Network % > 65.0 | 87% | 87% | 87% | 87% |
| *Natl. % > 65.0 | 82% | 82% | 82% | 82% |

* Figures for 2000



| | | | | |
|-------------------------|------------|------------|------------|------------|
| # Kt/V | 40 | 44 | 41 | 38 |
| # Kt/V >= 1.4 | 32 | 37 | 31 | 30 |
| Pop. Mean = | 1.57 | 1.63 | 1.66 | 1.58 |
| Std. Deviation = | 0.31 | 0.37 | 0.48 | 0.32 |
| Network Mean = | 1.61 | 1.61 | 1.61 | 1.61 |
| Natl. Mean 1999 = | 1.40 | 1.40 | 1.40 | 1.40 |
| % Kt/V >= 1.4 | 80% | 84% | 76% | 79% |
| % Kt/V > 1.2 | 93% | 89% | 88% | 85% |
| Network > 1.2 '00 | 93% | 93% | 93% | 93% |
| Natl. % > 1.2 - 2001 | 91% | 91% | 91% | 91% |

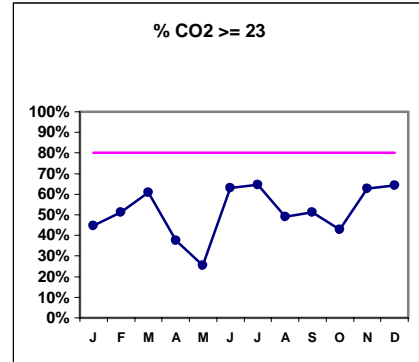


*Methodology: a) Monthly values based on patient's monthly average of all values present for the month; b) Quarter values are average of all values for quarter; c) Values not averaged use last value present at months end.

Northwest Kidney Centers - Home Hemodialysis
 Quality Assurance Reports (Excludes patients in first 3 months of treatment - as of Dec. 31, 2002)
 Through period ending Dec. 31, 2002

I. ADEQUACY OF DIALYSIS - CONT.

| | J | F | M | A | M | J | J | A | S | O | N | D |
|------------------|------|------|------|------|------|------|------|------|------|------|------|------|
| # CO2 | 47 | 43 | 41 | 48 | 51 | 46 | 48 | 49 | 45 | 42 | 43 | 42 |
| # CO2 >= 23 | 21 | 22 | 25 | 18 | 13 | 29 | 31 | 24 | 23 | 18 | 27 | 27 |
| Pop. Mean = | 20 | 22 | 23 | 20 | 20 | 23 | 23 | 22 | 23 | 22 | 23 | 23 |
| Std. Deviation = | 4.37 | 4.88 | 3.28 | 5.34 | 4.47 | 3.51 | 3.03 | 5.37 | 2.97 | 3.08 | 3.27 | 4.78 |
| Network Mean = | | | | | | | | | | | | |
| Natl. Mean = | | | | | | | | | | | | |
| % CO2 >= 23 | 45% | 51% | 61% | 38% | 25% | 63% | 65% | 49% | 51% | 43% | 63% | 64% |



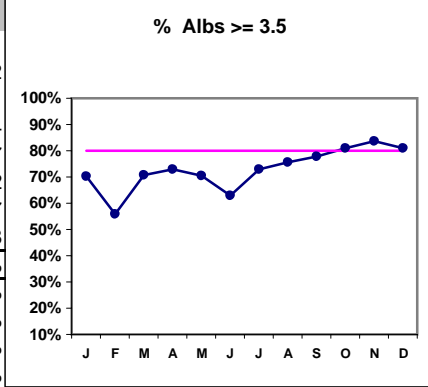
*Methodology: a) Monthly values based on patient's monthly average of all values present for the month; b) Quarter values are average of all values for quarter; c) Values not averaged use last value present at months end.

Northwest Kidney Centers - Home Hemodialysis
 Quality Assurance Reports (Excludes patients in first 3 months of treatment - as of Dec. 31, 2002)
 Through period ending Dec. 31, 2002

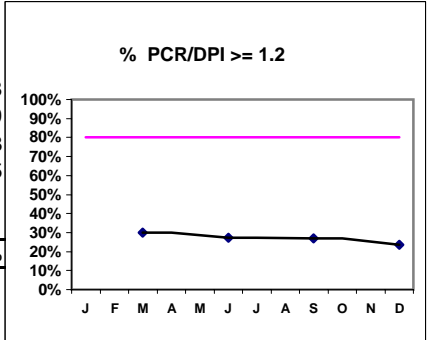
*Albumin values use BCG method - as of July 2001

II. NUTRITION

| | J | F | M | A | M | J | J | A | S | O | N | D |
|---------------------|------|------|------|------|------|------|------|------|------|------|------|------|
| # Albumin | 47 | 43 | 41 | 48 | 51 | 46 | 48 | 49 | 45 | 42 | 43 | 42 |
| # Albumin >= 3.5 | 33 | 24 | 29 | 35 | 36 | 29 | 35 | 37 | 35 | 34 | 36 | 34 |
| Pop. Mean = | 3.6 | 3.7 | 3.6 | 3.7 | 3.6 | 3.6 | 3.7 | 3.7 | 3.7 | 3.8 | 3.7 | 3.7 |
| Std. Deviation = | 0.45 | 0.33 | 0.34 | 0.38 | 0.38 | 0.34 | 0.38 | 0.36 | 0.36 | 0.35 | 0.32 | 0.32 |
| Network Mean = | 3.7 | 3.7 | 3.7 | 3.7 | 3.7 | 3.7 | 3.7 | 3.7 | 3.7 | 3.7 | 3.7 | 3.7 |
| Natl. Mean = | 3.8 | 3.8 | 3.8 | 3.8 | 3.8 | 3.8 | 3.8 | 3.8 | 3.8 | 3.8 | 3.8 | 3.8 |
| % Alb >= 3.5 | 70% | 56% | 71% | 73% | 71% | 63% | 73% | 76% | 78% | 81% | 84% | 81% |
| Home % >= 3.7 | 40% | 56% | 49% | 46% | 41% | 41% | 50% | 53% | 62% | 67% | 60% | 55% |
| Home % >= 4.0 | 11% | 26% | 12% | 25% | 10% | 17% | 23% | 22% | 24% | 26% | 23% | 12% |
| *Natl % >= 3.5-BCG | 80% | 80% | 80% | 80% | 80% | 80% | 80% | 80% | 80% | 80% | 80% | 80% |
| *Natl. % >= 4.0-BCG | 29% | 29% | 29% | 29% | 29% | 29% | 29% | 29% | 29% | 29% | 29% | 29% |
| *Netwk%>=3.5 BCG | 79% | 79% | 79% | 79% | 79% | 79% | 79% | 79% | 79% | 79% | 79% | 79% |
| *Netwk%>=4.0 BCG | 29% | 29% | 29% | 29% | 29% | 29% | 29% | 29% | 29% | 29% | 29% | 29% |



| | | | | |
|------------------|------|------|------|------|
| # PCR/DPI | 40 | 44 | 41 | 38 |
| # PCR/DPI >= 1.2 | 12 | 12 | 11 | 9 |
| Pop. Mean = | 0.99 | 1.02 | 1.05 | 0.98 |
| Std. Deviation = | 0.25 | 0.29 | 0.26 | 0.25 |
| Network Mean = | | | | |
| Natl. Mean = | | | | |
| % PCR/DPI >= 1.2 | 30% | 27% | 27% | 24% |

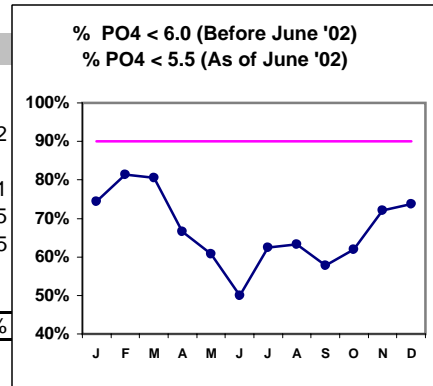


*Methodology: a) Monthly values based on patient's monthly average of all values present for the month; b) Quarter values are average of all values for quarter; c) Values not averaged use last value present at months end.

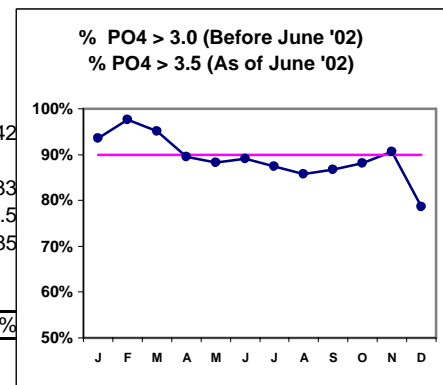
Northwest Kidney Centers - Home Hemodialysis
 Quality Assurance Reports (Excludes patients in first 3 months of treatment - as of Dec. 31, 2002)
 Through period ending Dec. 31, 2002

III. OSTEODYSTROPHY

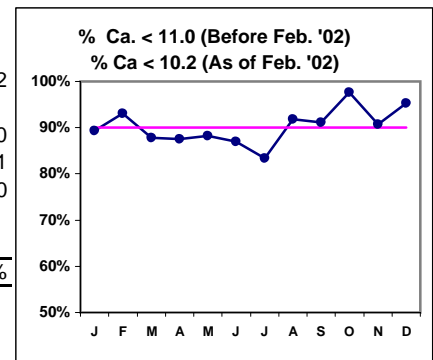
| | J | F | M | A | M | J | J | A | S | O | N | D |
|--------------------|------|------|------|------|------|------|------|------|------|------|------|------|
| # PO4 | 47 | 43 | 41 | 48 | 51 | 46 | 48 | 49 | 45 | 42 | 43 | 42 |
| # PO4 < 6.0 | 35 | 35 | 33 | 32 | 31 | | | | | | | |
| # PO4 < 5.5 | | | | | | 23 | 30 | 31 | 26 | 26 | 31 | 31 |
| Pop. Mean = | 5.6 | 5.1 | 5.1 | 5.2 | 5.6 | 5.1 | 5.1 | 5.3 | 5.3 | 5.2 | 4.9 | 4.5 |
| Std. Deviation | 1.86 | 1.27 | 1.36 | 1.57 | 2.02 | 1.24 | 1.30 | 1.39 | 1.62 | 1.38 | 1.45 | 1.35 |
| Network Mean = | | | | | | | | | | | | |
| Natl. Mean = | | | | | | | | | | | | |
| % PO4 < 6.0 or 5.5 | 74% | 81% | 80% | 67% | 61% | 50% | 63% | 63% | 58% | 62% | 72% | 74% |



| | | | | | | | | | | | | |
|--------------------|------|------|------|------|------|------|------|------|------|------|------|------|
| # PO4 | 47 | 43 | 41 | 48 | 51 | 46 | 48 | 49 | 45 | 42 | 43 | 42 |
| # PO4 > 3.0 | 44 | 42 | 39 | 43 | 45 | | | | | | | |
| # PO4 > 3.5 | | | | | | 41 | 42 | 42 | 39 | 37 | 39 | 33 |
| Pop. Mean = | 5.6 | 5.1 | 5.1 | 5.2 | 5.6 | 5.1 | 5.1 | 5.3 | 5.3 | 5.2 | 4.9 | 4.5 |
| Std. Deviation | 1.86 | 1.27 | 1.36 | 1.57 | 2.02 | 1.24 | 1.30 | 1.39 | 1.62 | 1.38 | 1.45 | 1.35 |
| Network Mean = | | | | | | | | | | | | |
| Natl. Mean = | | | | | | | | | | | | |
| % PO4 > 3.0 or 3.5 | 94% | 98% | 95% | 90% | 88% | 89% | 88% | 86% | 87% | 88% | 91% | 79% |



| | | | | | | | | | | | | |
|---------------------|------|------|------|------|------|------|------|------|------|------|------|------|
| # Calcium | 47 | 43 | 41 | 48 | 51 | 46 | 48 | 49 | 45 | 42 | 43 | 42 |
| # Calcium < 11.0 | 42 | | | | | | | | | | | |
| # Calcium < 10.2 | | 40 | 36 | 42 | 45 | 40 | 40 | 45 | 41 | 41 | 39 | 40 |
| Pop. Mean = | 9.3 | 9.2 | 9.2 | 9.5 | 9.3 | 9.3 | 9.4 | 9.3 | 9.2 | 9.2 | 9.2 | 9.1 |
| Std. Deviation | 0.94 | 0.79 | 0.77 | 0.79 | 0.88 | 0.79 | 0.85 | 0.72 | 0.66 | 0.73 | 0.81 | 0.70 |
| Network Mean = | | | | | | | | | | | | |
| Natl. Mean = | | | | | | | | | | | | |
| % Ca < 11.0 or 10.2 | 89% | 93% | 88% | 88% | 88% | 87% | 83% | 92% | 91% | 98% | 91% | 95% |



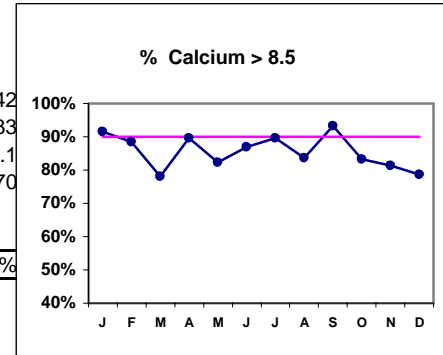
*Methodology: a) Monthly values based on patient's monthly average of all values present for the month; b) Quarter values are average of all values for quarter; c) Values not averaged use last value present at months end.

Northwest Kidney Centers - Home Hemodialysis
 Quality Assurance Reports (Excludes patients in first 3 months of treatment - as of Dec. 31, 2002)
 Through period ending Dec. 31, 2002

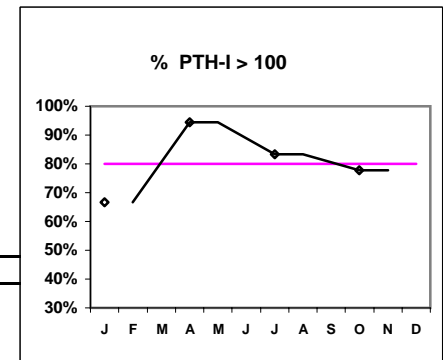
III. OSTEODYSTROPHY - CONT.

J F M A M J J A S O N D

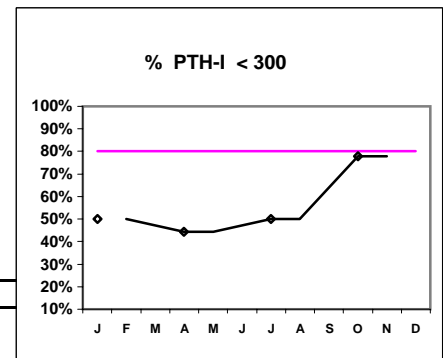
| | | | | | | | | | | | | |
|---------------------------|------------|------------|------------|------------|------------|------------|------------|------------|------------|------------|------------|------------|
| # Calcium | 47 | 43 | 41 | 48 | 51 | 46 | 48 | 49 | 45 | 42 | 43 | 42 |
| # Calcium > 8.5 | 43 | 38 | 32 | 43 | 42 | 40 | 43 | 41 | 42 | 35 | 35 | 33 |
| Pop. Mean = | 9.3 | 9.2 | 9.2 | 9.5 | 9.3 | 9.3 | 9.4 | 9.3 | 9.2 | 9.2 | 9.2 | 9.1 |
| Std. Deviation = | 0.94 | 0.79 | 0.77 | 0.79 | 0.88 | 0.79 | 0.85 | 0.72 | 0.66 | 0.73 | 0.81 | 0.70 |
| Network Mean = | | | | | | | | | | | | |
| Natl. Mean = | | | | | | | | | | | | |
| % Calcium > 8.5 | 91% | 88% | 78% | 90% | 82% | 87% | 90% | 84% | 93% | 83% | 81% | 79% |



| | | | | |
|-------------------------|------------|------------|------------|------------|
| # PTH-I | 18 | 18 | 12 | 9 |
| # PTH-I > 100 | 12 | 17 | 10 | 7 |
| Pop. Mean = | 275 | 465 | 591 | 269 |
| Std. Deviation = | 408 | 376 | 518 | 300 |
| Network Mean = | | | | |
| Natl. Mean = | | | | |
| % PTH-I > 100 | 67% | 94% | 83% | 78% |



| | | | | |
|-------------------------|------------|------------|------------|------------|
| # PTH-I | 18 | 18 | 12 | 9 |
| # PTH-I < 300 | 9 | 8 | 6 | 7 |
| Pop. Mean = | 275 | 465 | 591 | 269 |
| Std. Deviation = | 408 | 376 | 518 | 300 |
| Network Mean = | | | | |
| Natl. Mean = | | | | |
| % PTH-I < 300 | 50% | 44% | 50% | 78% |



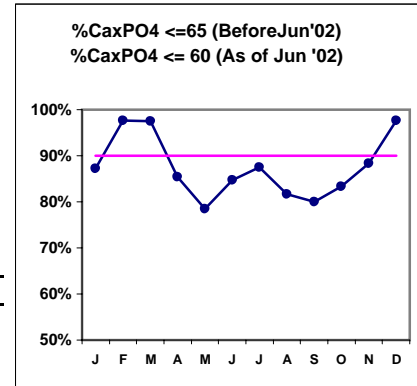
*Methodology: a) Monthly values based on patient's monthly average of all values present for the month; b) Quarter values are average of all values for quarter; c) Values not averaged use last value present at months end.

Northwest Kidney Centers - Home Hemodialysis
 Quality Assurance Reports (Excludes patients in first 3 months of treatment - as of Dec. 31, 2002)
 Through period ending Dec. 31, 2002

III. OSTEODYSTROPHY - CONT.

J F M A M J J A S O N D

| | | | | | | | | | | | | |
|-----------------------------|------------|------------|------------|------------|------------|------------|------------|------------|------------|------------|------------|------------|
| # Ca x PO4 | 47 | 43 | 41 | 48 | 51 | 46 | 48 | 49 | 45 | 42 | 43 | 42 |
| # Ca x PO4 <= 65 | 41 | 42 | 40 | 41 | 40 | | | | | | | |
| # Ca x PO4 <= 60 | | | | | | 39 | 42 | 40 | 36 | 35 | 38 | 41 |
| Pop. Mean = | 51.3 | 46.4 | 47.0 | 49.0 | 52.0 | 47.6 | 48.0 | 48.7 | 48.5 | 47.9 | 45.4 | 40.8 |
| Std. Deviation = | 15.2 | 10.8 | 13.1 | 14.2 | 18.5 | 12.1 | 12.9 | 13.8 | 14.5 | 13.5 | 13.5 | 12.0 |
| Network Mean = | | | | | | | | | | | | |
| Natl. Mean = | | | | | | | | | | | | |
| CaxPO4 <=65 or 60 | 87% | 98% | 98% | 85% | 78% | 85% | 88% | 82% | 80% | 83% | 88% | 98% |

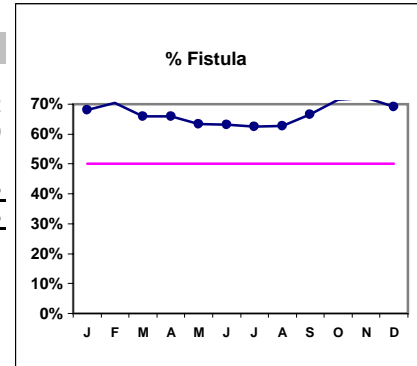


*Methodology: a) Monthly values based on patient's monthly average of all values present for the month; b) Quarter values are average of all values for quarter; c) Values not averaged use last value present at months end.

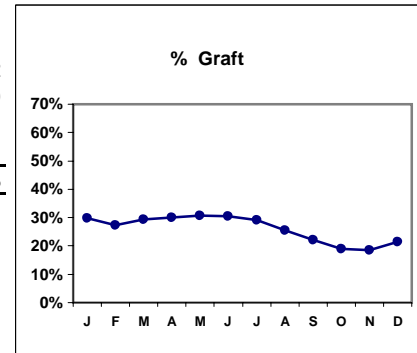
Northwest Kidney Centers - Home Hemodialysis
 Quality Assurance Reports (Excludes patients in first 3 months of treatment - as of Dec. 31, 2002)
 Through period ending Dec. 31, 2002

IV. ACCESS

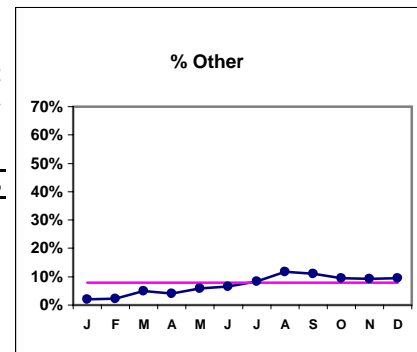
| | J | F | M | A | M | J | J | A | S | O | N | D |
|----------------|-----|-----|-----|-----|-----|-----|-----|-----|-----|-----|-----|-----|
| # Access | 47 | 44 | 41 | 50 | 52 | 46 | 48 | 51 | 45 | 42 | 43 | 42 |
| # Fistula | 32 | 31 | 27 | 33 | 33 | 29 | 30 | 32 | 30 | 30 | 31 | 29 |
| Network % | | | | | | | | | | | | |
| Natl. % - 2000 | 30% | 30% | 30% | 30% | 30% | 30% | 30% | 30% | 30% | 30% | 30% | 30% |
| % Fistula | 68% | 70% | 66% | 66% | 63% | 63% | 63% | 63% | 67% | 71% | 72% | 69% |



| | | | | | | | | | | | | |
|-----------|-----|-----|-----|-----|-----|-----|-----|-----|-----|-----|-----|-----|
| # Access | 47 | 44 | 41 | 50 | 52 | 46 | 48 | 51 | 45 | 42 | 43 | 42 |
| # Graft | 14 | 12 | 12 | 15 | 16 | 14 | 14 | 13 | 10 | 8 | 8 | 9 |
| Network % | | | | | | | | | | | | |
| Natl. % | | | | | | | | | | | | |
| % Graft | 30% | 27% | 29% | 30% | 31% | 30% | 29% | 25% | 22% | 19% | 19% | 21% |



| | | | | | | | | | | | | |
|-----------|----|----|----|----|----|----|----|-----|-----|-----|----|-----|
| # Access | 47 | 44 | 41 | 50 | 52 | 46 | 48 | 51 | 45 | 42 | 43 | 42 |
| # Other | 1 | 1 | 2 | 2 | 3 | 3 | 4 | 6 | 5 | 4 | 4 | 4 |
| Network % | | | | | | | | | | | | |
| Natl. % | | | | | | | | | | | | |
| % Other | 2% | 2% | 5% | 4% | 6% | 7% | 8% | 12% | 11% | 10% | 9% | 10% |



*Methodology: a) Monthly values based on patient's monthly average of all values present for the month; b) Quarter values are average of all values for quarter; c) Values not averaged use last value present at months end.

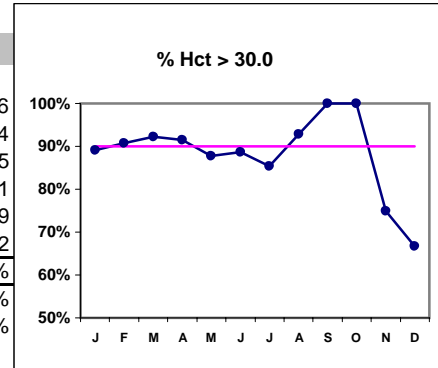
Northwest Kidney Centers - Home Hemodialysis
 Quality Assurance Reports (Excludes patients in first 3 months of treatment - as of Dec. 31, 2002)
 Through period ending Dec. 31, 2002

***Hct. values use Coulter method - as of July 2001**

V. ANEMIA

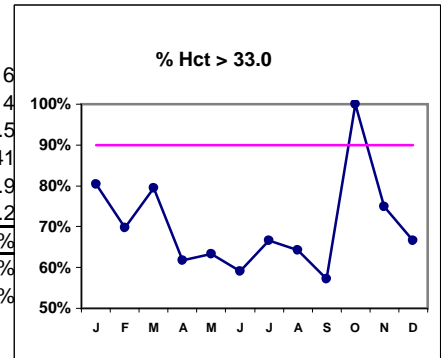
| | J | F | M | A | M | J | J | A | S | O | N | D |
|-------------------|------|------|------|------|------|------|------|------|------|------|------|------|
| # Hct | 46 | 43 | 39 | 47 | 49 | 44 | 48 | 14 | 7 | 3 | 4 | 6 |
| # Hct > 30.0 | 41 | 39 | 36 | 43 | 43 | 39 | 41 | 13 | 7 | 3 | 3 | 4 |
| Pop. Mean = | 35.5 | 35.5 | 36.0 | 35.4 | 34.9 | 34.8 | 35.7 | 36.4 | 35.3 | 37.5 | 34.9 | 35.5 |
| Std. Deviation = | 4.48 | 5.12 | 4.90 | 5.09 | 4.92 | 4.99 | 4.64 | 4.64 | 4.50 | 2.82 | 6.16 | 7.41 |
| Network Mean = | 33.9 | 33.9 | 33.9 | 33.9 | 33.9 | 33.9 | 33.9 | 33.9 | 33.9 | 33.9 | 33.9 | 33.9 |
| Natl. Mean = | 34.2 | 34.2 | 34.2 | 34.2 | 34.2 | 34.2 | 34.2 | 34.2 | 34.2 | 34.2 | 34.2 | 34.2 |
| % Hct > 30.0 | 89% | 91% | 92% | 91% | 88% | 89% | 85% | 93% | #### | #### | 75% | 67% |
| *% Network > 30.0 | 89% | 89% | 89% | 89% | 89% | 89% | 89% | 89% | 89% | 89% | 89% | 89% |
| % Natl. > 30.0 | 79% | 79% | 79% | 79% | 79% | 79% | 79% | 79% | 79% | 79% | 79% | 79% |

* Figures for 2000



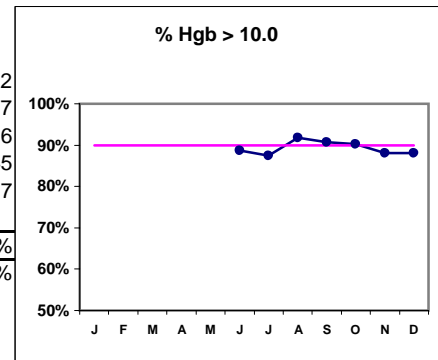
| | | | | | | | | | | | | |
|-------------------|------|------|------|------|------|------|------|------|------|------|------|------|
| # Hct | 46 | 43 | 39 | 47 | 49 | 44 | 48 | 14 | 7 | 3 | 4 | 6 |
| # Hct > 33.0 | 37 | 30 | 31 | 29 | 31 | 26 | 32 | 9 | 4 | 3 | 3 | 4 |
| Pop. Mean = | 35.5 | 35.5 | 36.0 | 35.4 | 34.9 | 34.8 | 35.7 | 36.4 | 35.3 | 37.5 | 34.9 | 35.5 |
| Std. Deviation = | 4.48 | 5.12 | 4.90 | 5.09 | 4.92 | 4.99 | 4.64 | 4.64 | 4.50 | 2.82 | 6.16 | 7.41 |
| Network Mean = | 33.9 | 33.9 | 33.9 | 33.9 | 33.9 | 33.9 | 33.9 | 33.9 | 33.9 | 33.9 | 33.9 | 33.9 |
| Natl. Mean = | 34.2 | 34.2 | 34.2 | 34.2 | 34.2 | 34.2 | 34.2 | 34.2 | 34.2 | 34.2 | 34.2 | 34.2 |
| % Hct > 33.0 | 80% | 70% | 79% | 62% | 63% | 59% | 67% | 64% | 57% | #### | 75% | 67% |
| *% Network > 33.0 | 74% | 74% | 74% | 74% | 74% | 74% | 74% | 74% | 74% | 74% | 74% | 74% |
| % Natl. > 33.0 | 73% | 73% | 73% | 73% | 73% | 73% | 73% | 73% | 73% | 73% | 73% | 73% |

*Figures for 2000



| | | | | | | | | | | | | |
|------------------|------|------|------|------|------|------|------|------|------|------|------|------|
| # Hgb | | | | | | 44 | 48 | 49 | 43 | 41 | 42 | 42 |
| # Hgb > 10.0 | | | | | | 39 | 42 | 45 | 39 | 37 | 37 | 37 |
| Pop. Mean = | | | | | | 11.6 | 11.8 | 11.8 | 11.8 | 11.9 | 11.6 | 11.6 |
| Std. Deviation = | | | | | | 1.66 | 1.53 | 1.40 | 1.33 | 1.40 | 1.56 | 1.45 |
| *Network Mean = | 11.7 | 11.7 | 11.7 | 11.7 | 11.7 | 11.7 | 11.7 | 11.7 | 11.7 | 11.7 | 11.7 | 11.7 |
| Natl. Mean = | | | | | | | | | | | | |
| % Hgb > 10.0 | | | | | | 89% | 88% | 92% | 91% | 90% | 88% | 88% |
| *% Network >= 10 | 93% | 93% | 93% | 93% | 93% | 93% | 93% | 93% | 93% | 93% | 93% | 93% |

*Figures for 2000

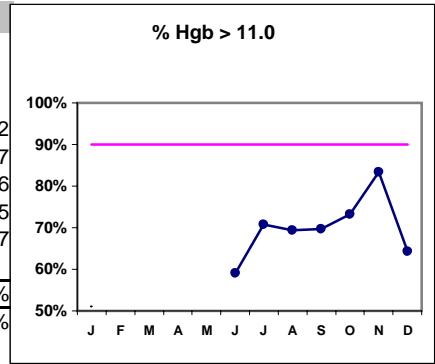


*Methodology: a) Monthly values based on patient's monthly average of all values present for the month; b) Quarter values are average of all values for quarter; c) Values not averaged use last value present at months end.

Northwest Kidney Centers - Home Hemodialysis
 Quality Assurance Reports (Excludes patients in first 3 months of treatment - as of Dec. 31, 2002)
 Through period ending Dec. 31, 2002

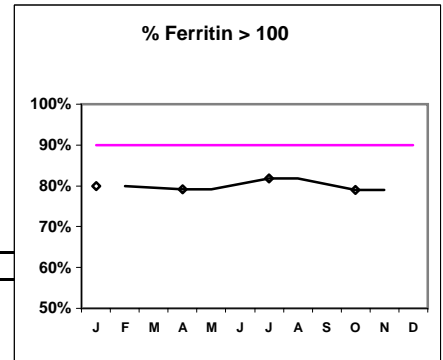
V. ANEMIA - CONT.

| | J | F | M | A | M | J | J | A | S | O | N | D |
|-------------------|------|------|------|------|------|------|------|------|------|------|------|------|
| # Hgb | | | | | | 44 | 48 | 49 | 43 | 41 | 42 | 42 |
| # Hgb > 11.0 | | | | | | 26 | 34 | 34 | 30 | 30 | 35 | 27 |
| Pop. Mean = | | | | | | 11.6 | 11.8 | 11.8 | 11.8 | 11.9 | 11.6 | 11.6 |
| Std. Deviation = | | | | | | 1.66 | 1.53 | 1.40 | 1.33 | 1.40 | 1.56 | 1.45 |
| *Network Mean = | 11.7 | 11.7 | 11.7 | 11.7 | 11.7 | 11.7 | 11.7 | 11.7 | 11.7 | 11.7 | 11.7 | 11.7 |
| Natl. Mean = | | | | | | | | | | | | |
| % Hgb > 11.0 | | | | | | 59% | 71% | 69% | 70% | 73% | 83% | 64% |
| *% Network >= 11 | 76% | 76% | 76% | 76% | 76% | 76% | 76% | 76% | 76% | 76% | 76% | 76% |
| *Figures for 2000 | | | | | | | | | | | | |

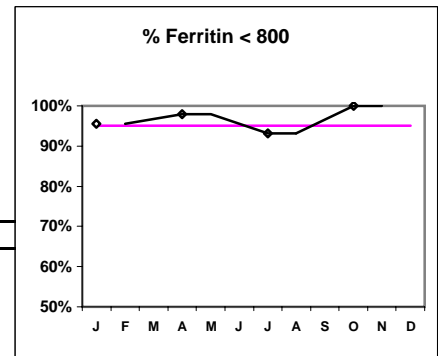


Iron Profile

| | | | | |
|-------------------|-----|-----|-----|-----|
| # Ferritin | 45 | 48 | 44 | 38 |
| # Ferritin > 100 | 36 | 38 | 36 | 30 |
| Pop. Mean = | 257 | 298 | 328 | 320 |
| Std. Deviation = | 217 | 227 | 234 | 207 |
| *Network Mean = | 489 | 489 | 489 | 489 |
| Natl. Mean = | | | | |
| % Ferritin > 100 | 80% | 79% | 82% | 79% |
| *% Network > 100 | 88% | 88% | 88% | 88% |
| *Figures for 2000 | | | | |



| | | | | |
|-------------------|-----|-----|-----|------|
| # Ferritin | 45 | 48 | 44 | 38 |
| # Ferritin < 800 | 43 | 47 | 41 | 38 |
| Pop. Mean = | 257 | 298 | 328 | 320 |
| Std. Deviation = | 217 | 227 | 234 | 207 |
| *Network Mean = | 489 | 489 | 489 | 489 |
| Natl. Mean = | | | | |
| % Ferritin < 800 | 96% | 98% | 93% | #### |
| *Figures for 2000 | | | | |

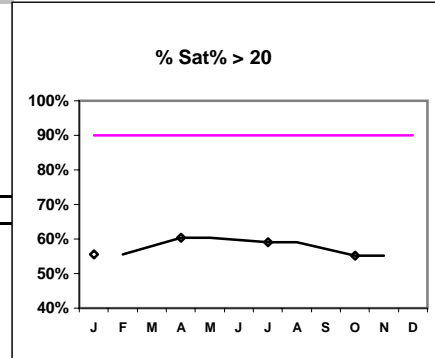


*Methodology: a) Monthly values based on patient's monthly average of all values present for the month; b) Quarter values are average of all values for quarter; c) Values not averaged use last value present at months end.

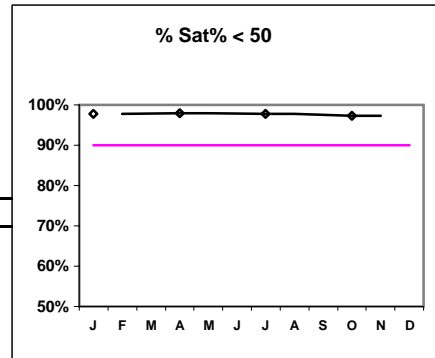
Northwest Kidney Centers - Home Hemodialysis
 Quality Assurance Reports (Excludes patients in first 3 months of treatment - as of Dec. 31, 2002)
 Through period ending Dec. 31, 2002

V. ANEMIA - CONT.

| | J | F | M | A | M | J | J | A | S | O | N | D |
|-------------------|------|---|---|------|---|---|------|---|---|------|---|---|
| # % Sat | 45 | | | 48 | | | 44 | | | 38 | | |
| # % Sat > 20 | 25 | | | 29 | | | 26 | | | 21 | | |
| Pop. Mean = | 22.8 | | | 24.6 | | | 25.2 | | | 22.4 | | |
| Std. Deviation = | 9.5 | | | 8.9 | | | 10.5 | | | 10.1 | | |
| *Network Mean = | 28 | | | 28 | | | 28 | | | 28 | | |
| Natl. Mean = | | | | | | | | | | | | |
| % Sat% > 20 | 56% | | | 60% | | | 59% | | | 55% | | |
| *% Network > 20 | 71% | | | 71% | | | 71% | | | 71% | | |
| *Figures for 2000 | | | | | | | | | | | | |



| | | | | | | | | | | | | |
|-------------------|------|--|--|------|--|--|------|--|--|------|--|--|
| # % Sat | 45 | | | 48 | | | 44 | | | 38 | | |
| # % Sat < 50 | 44 | | | 47 | | | 43 | | | 37 | | |
| Pop. Mean = | 22.8 | | | 24.6 | | | 25.2 | | | 22.4 | | |
| Std. Deviation = | 9.5 | | | 8.9 | | | 10.5 | | | 10.1 | | |
| *Network Mean = | 28 | | | 28 | | | 28 | | | 28 | | |
| Natl. Mean = | | | | | | | | | | | | |
| % Sat% < 50 | 98% | | | 98% | | | 98% | | | 97% | | |
| *Figures for 2000 | | | | | | | | | | | | |



*Methodology: a) Monthly values based on patient's monthly average of all values present for the month; b) Quarter values are average of all values for quarter; c) Values not averaged use last value present at months end.