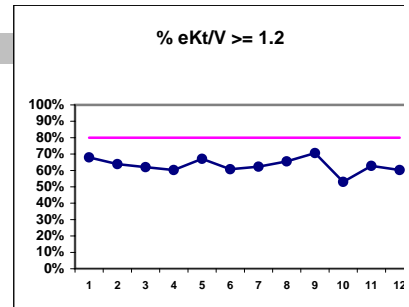


**Elliott Bay Kidney Center - Center Hemodialysis**  
**Quality Assurance Reports (Excludes patients in first 6 months of treatment)**  
**Through period ending Dec. 31, 1999**

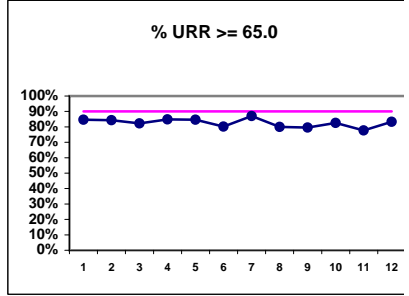
I,j - I.S. Dept.

**I. ADEQUACY OF DIALYSIS**

	J	F	M	A	M	J	J	A	S	O	N	D
# eKt/V	78	83	79	78	76	84	85	90	85	83	94	88
# eKt/V >= 1.2	53	53	49	47	51	51	53	59	60	44	59	53
Pop. Mean =	1.30	1.33	1.29	1.26	1.27	1.25	1.29	1.37	1.35	1.22	1.27	1.31
Std. Deviation =	0.28	0.23	0.23	0.28	0.25	0.23	0.28	0.45	0.26	0.23	0.24	0.52
Network Mean =												
Natl. Mean =												
% eKt/V >= 1.2	68%	64%	62%	60%	67%	61%	62%	66%	71%	53%	63%	60%

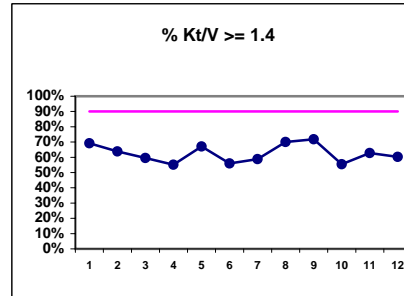


# URR	78	83	79	79	78	86	85	90	88	92	94	90
# URR >= 65.0	66	70	65	67	66	69	74	72	70	76	73	75
Pop. Mean =	72.2	71.3	70.2	69.8	69.8	70.6	71.8	70.5	70.6	72.5	72.4	70.9
Std. Deviation =	7.60	6.59	7.63	10.70	6.88	7.46	6.60	7.63	10.0	8.39	8.16	8.74
Network Mean =	74.0	74.0	74.0	74.0	74.0	74.0	74.0	74.0	74.0	74.0	74.0	74.0
*Natl. Mean =	68.0	68.0	68.0	68.0	68.0	68.0	68.0	68.0	68.0	68.0	68.0	68.0
% URR >= 65.0	85%	84%	82%	85%	85%	80%	87%	80%	80%	83%	78%	83%
*Natl. % > 65.0	72%	72%	72%	72%	72%	72%	72%	72%	72%	72%	72%	72%



\* Figures for 1997

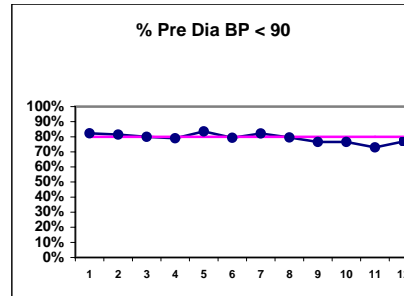
# Kt/V	78	83	79	78	76	84	85	90	85	83	94	88
# Kt/V >= 1.4	54	53	47	43	51	47	50	63	61	46	59	53
Pop. Mean =	1.56	1.54	1.46	1.46	1.48	1.46	1.50	1.59	1.57	1.42	1.47	1.52
Std. Deviation =	0.28	0.26	0.27	0.34	0.30	0.27	0.33	0.56	0.31	0.26	0.28	0.62
Network Mean =												
*Natl. Mean =	1.39	1.39	1.39	1.39	1.39	1.39	1.39	1.39	1.39	1.39	1.39	1.39
% Kt/V >= 1.4	69%	64%	59%	55%	67%	56%	59%	70%	72%	55%	63%	60%
% Kt/V > 1.2	80%	82%	85%	85%	87%	82%	86%	86%	88%	83%	85%	86%
*Network % > 1.2	79%	79%	79%	79%	79%	79%	79%	79%	79%	79%	79%	79%
*Natl. % > 1.2	78%	78%	78%	78%	78%	78%	78%	78%	78%	78%	78%	78%



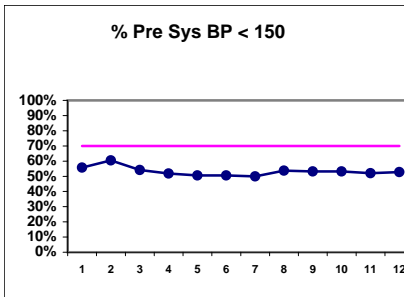
\* Figures for 1997

**Blood Pressure Control (Pre)**

# Pre Dia BP	79	86	85	81	85	87	90	93	94	94	96	91
# Pre Dia BP < 90	65	70	68	64	71	69	74	74	72	72	70	70
Pop. Mean =	79	79	80	80	79	79	79	79	80	82	81	81
Std. Deviation =	11.1	11.5	11.9	11.4	12.2	11.1	12.3	13.0	13.8	14.5	13.0	12.9
Network Mean =												
Natl. Mean =												
% Pre Dia BP < 90	82%	81%	80%	79%	84%	79%	82%	80%	77%	77%	73%	77%



# Pre Sys BP	79	86	85	81	85	87	90	93	94	94	96	91
# Pre Sys BP < 150	44	52	46	42	43	44	45	50	50	50	50	48
Pop. Mean =	148	146	148	149	147	148	148	145	147	147	149	149
Std. Deviation =	19.0	18.5	19.1	19.4	20.6	19.1	20.1	20.7	19.7	19.8	20.7	19.7
Network Mean =												
Natl. Mean =												
% Pre Sys BP < 150	56%	60%	54%	52%	51%	51%	50%	54%	53%	53%	52%	53%



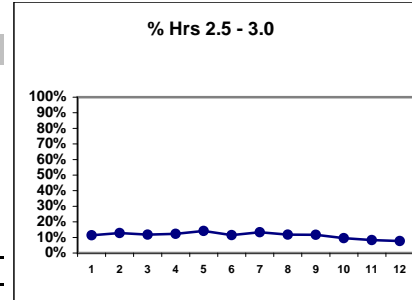
\*Methodology: a) Monthly values based on patient's monthly average of all values present for the month; b) Quarter values are average of all values for quarter; c) Values not averaged use last value present at months end.

**Elliott Bay Kidney Center - Center Hemodialysis**  
**Quality Assurance Reports (Excludes patients in first 6 months of treatment)**  
**Through period ending Dec. 31, 1999**

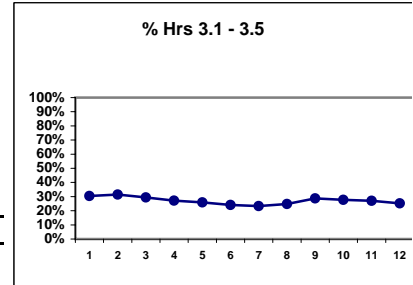
I,j - I.S. Dept.

**I. ADEQUACY OF DIALYSIS - CONT.**

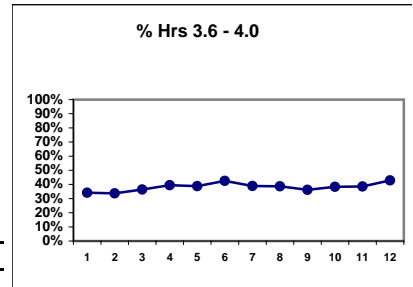
	J	F	M	A	M	J	J	A	S	O	N	D
# Dialysis Hrs	79	86	85	81	85	87	90	93	94	94	96	91
# Hrs. 2.5 - 3.0	9	11	10	10	12	10	12	11	11	9	8	7
Pop. Mean =	3.7	3.7	3.8	3.8	3.8	3.8	3.8	3.8	3.8	3.8	4.2	3.8
Std. Deviation =	0.58	0.65	0.50	0.50	0.51	0.48	0.49	0.51	0.50	0.56	3.25	0.50
Network Mean =												
Natl. Mean =												
% Hrs. 2.5 - 3.0	11%	13%	12%	12%	14%	11%	13%	12%	12%	10%	8%	8%



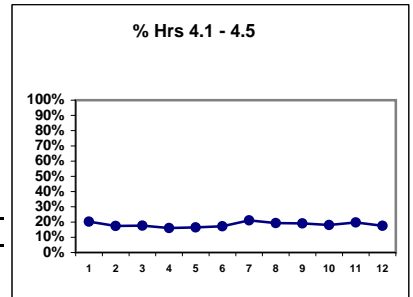
# Dialysis Hrs	79	86	85	81	85	87	90	93	94	94	96	91
# Hrs 3.1 - 3.5	24	27	25	22	22	21	21	23	27	26	26	23
Pop. Mean =	3.7	3.7	3.8	3.8	3.8	3.8	3.8	3.8	3.8	3.8	4.2	3.8
Std. Deviation =	0.58	0.65	0.50	0.50	0.51	0.48	0.49	0.51	0.50	0.56	3.25	0.50
Network Mean =												
Natl. Mean =												
% Hrs 3.1 - 3.5	30%	31%	29%	27%	26%	24%	23%	25%	29%	28%	27%	25%



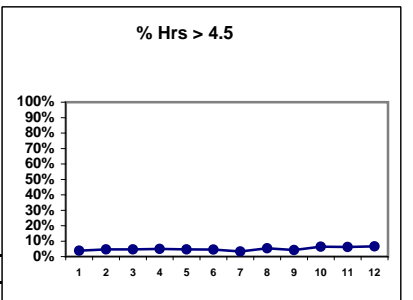
# Dialysis Hrs	79	86	85	81	85	87	90	93	94	94	96	91
# Hrs 3.6 - 4.0	27	29	31	32	33	37	35	36	34	36	37	39
Pop. Mean =	3.7	3.7	3.8	3.8	3.8	3.8	3.8	3.8	3.8	3.8	4.2	3.8
Std. Deviation =	0.58	0.65	0.50	0.50	0.51	0.48	0.49	0.51	0.50	0.56	3.25	0.50
Network Mean =												
Natl. Mean =												
% Hrs 3.6 - 4.0	34%	34%	36%	40%	39%	43%	39%	39%	36%	38%	39%	43%



# Dialysis Hrs	79	86	85	81	85	87	90	93	94	94	96	91
# Hrs 4.1 - 4.5	16	15	15	13	14	15	19	18	18	17	19	16
Pop. Mean =	3.7	3.7	3.8	3.8	3.8	3.8	3.8	3.8	3.8	3.8	4.2	3.8
Std. Deviation =	0.58	0.65	0.50	0.50	0.51	0.48	0.49	0.51	0.50	0.56	3.25	0.50
Network Mean =												
Natl. Mean =												
% Hrs 4.1 - 4.5	20%	17%	18%	16%	16%	17%	21%	19%	19%	18%	20%	18%



# Dialysis Hrs	79	86	85	81	85	87	90	93	94	94	96	91
# Hrs > 4.5	3	4	4	4	4	4	3	5	4	6	6	6
Pop. Mean =	3.7	3.7	3.8	3.8	3.8	3.8	3.8	3.8	3.8	3.8	4.2	3.8
Std. Deviation =	0.58	0.65	0.50	0.50	0.51	0.48	0.49	0.51	0.50	0.56	3.25	0.50
Network Mean =												
Natl. Mean =												
% Hrs > 4.5	4%	5%	5%	5%	5%	5%	3%	5%	4%	6%	6%	7%



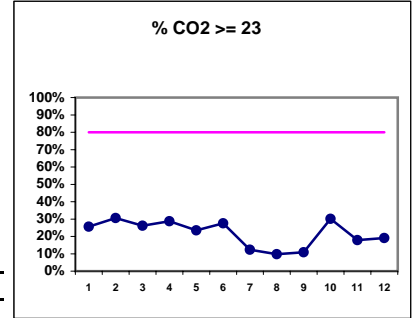
\*Methodology: a) Monthly values based on patient's monthly average of all values present for the month; b) Quarter values are average of all values for quarter; c) Values not averaged use last value present at months end.

**Elliott Bay Kidney Center - Center Hemodialysis**  
**Quality Assurance Reports (Excludes patients in first 6 months of treatment)**  
**Through period ending Dec. 31, 1999**

I,j - I.S. Dept.

**I. ADEQUACY OF DIALYSIS - CONT.**

	J	F	M	A	M	J	J	A	S	O	N	D
# CO2	78	85	84	80	85	87	89	92	92	93	95	89
# CO2 >= 23	20	26	22	23	20	24	11	9	10	28	17	17
Pop. Mean =	20	21	21	21	21	21	19	19	19	21	19	19
Std. Deviation =	3.92	2.81	3.31	3.69	2.93	2.83	3.46	3.28	3.81	3.72	3.40	3.93
Network Mean =												
Natl. Mean =												
<b>% CO2 &gt;= 23</b>	<b>26%</b>	<b>31%</b>	<b>26%</b>	<b>29%</b>	<b>24%</b>	<b>28%</b>	<b>12%</b>	<b>10%</b>	<b>11%</b>	<b>30%</b>	<b>18%</b>	<b>19%</b>



(Note: Jan & Feb Albumin values are adjusted by +0.2)

\*Albumin values use BCP method)

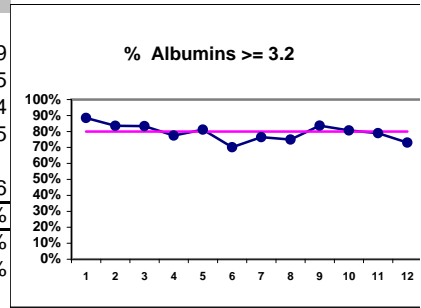
\*Methodology: a) Monthly values based on patient's monthly average of all values present for the month; b) Quarter values are average of all values for quarter; c) Values not averaged use last value present at months end.

**Elliott Bay Kidney Center - Center Hemodialysis**  
**Quality Assurance Reports (Excludes patients in first 6 months of treatment)**  
**Through period ending Dec. 31, 1999**

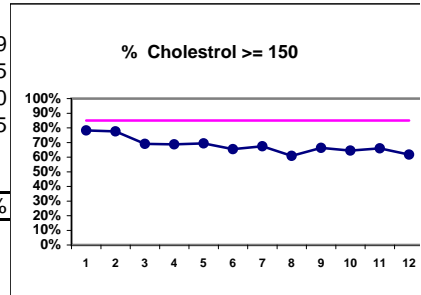
I,j - I.S. Dept.

**II. NUTRITION**

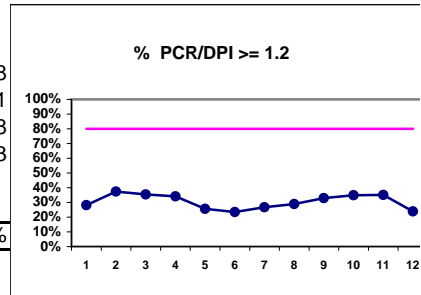
	J	F	M	A	M	J	J	A	S	O	N	D
# Albumin	78	85	84	80	85	87	89	92	92	93	95	89
# Albumin >= 3.2	69	71	70	62	69	61	68	69	77	75	75	65
Pop. Mean =	3.5	3.4	3.4	3.4	3.3	3.4	3.3	3.3	3.5	3.4	3.4	3.4
Std. Deviation =	0.33	0.40	0.42	0.41	0.40	0.42	0.43	0.38	0.40	0.46	0.39	0.45
Network Mean =												
Natl. Mean =	3.6	3.6	3.6	3.6	3.6	3.6	3.6	3.6	3.6	3.6	3.6	3.6
% Albumin >= 3.2	88%	84%	83%	78%	81%	70%	76%	75%	84%	81%	79%	73%
*Network % >= 3.2	76%	76%	76%	76%	76%	76%	76%	76%	76%	76%	76%	76%
*Natl. % >= 3.2	83%	83%	83%	83%	83%	83%	83%	83%	83%	83%	83%	83%



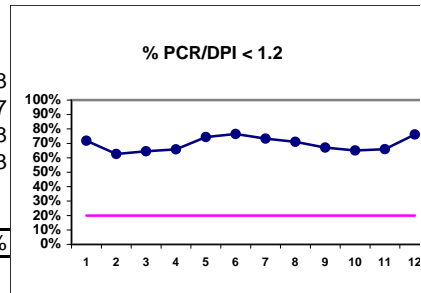
# Cholesterol	78	85	84	80	85	87	89	92	92	93	94	89
# Chol. >= 150	61	66	58	55	59	57	60	56	61	60	62	55
Pop. Mean =	177	184	170	170	166	170	165	162	163	166	164	160
Std. Deviation =	50.2	57.0	40.5	39.6	41.8	36.9	40.8	40.0	42.3	39.6	45.5	46.5
Network Mean =												
Natl. Mean =												
% Chol. >= 150	78%	78%	69%	69%	69%	66%	67%	61%	66%	65%	66%	62%



# PCR/DPI	78	83	79	79	78	85	86	90	85	83	94	88
# PCR/DPI >= 1.2	22	31	28	27	20	20	23	26	28	29	33	21
Pop. Mean =	1.02	1.06	1.06	1.05	1.03	1.03	1.01	1.05	1.06	1.05	1.07	1.08
Std. Deviation =	0.25	0.26	0.26	0.26	0.25	0.22	0.28	0.29	0.26	0.27	0.30	0.33
Network Mean =												
Natl. Mean =												
% PCR/DPI >= 1.2	28%	37%	35%	34%	26%	24%	27%	29%	33%	35%	35%	24%



# PCR/DPI	78	83	79	79	78	85	86	90	85	83	94	88
# PCR/DPI < 1.2	56	52	51	52	58	65	63	64	57	54	62	67
Pop. Mean =	1.02	1.06	1.06	1.05	1.03	1.03	1.01	1.05	1.06	1.05	1.07	1.08
Std. Deviation =	0.25	0.26	0.26	0.26	0.25	0.22	0.28	0.29	0.26	0.27	0.30	0.33
Network Mean =												
Natl. Mean =												
% PCR/DPI < 1.2	72%	63%	65%	66%	74%	76%	73%	71%	67%	65%	66%	76%



**III. OSTEODYSTROPHY**

% Calcium < 11.0

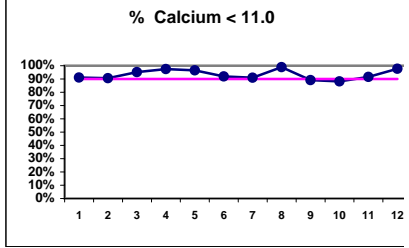
\*Methodology: a) Monthly values based on patient's monthly average of all values present for the month; b) Quarter values are average of all values for quarter; c) Values not averaged use last value present at months end.

**Elliott Bay Kidney Center - Center Hemodialysis**  
**Quality Assurance Reports (Excludes patients in first 6 months of treatment)**

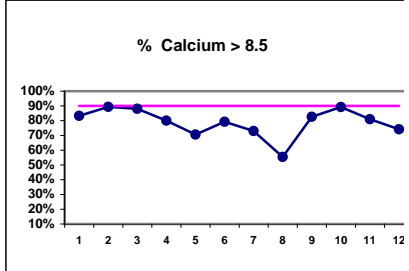
I,j - I.S. Dept.

Through period ending Dec. 31, 1999

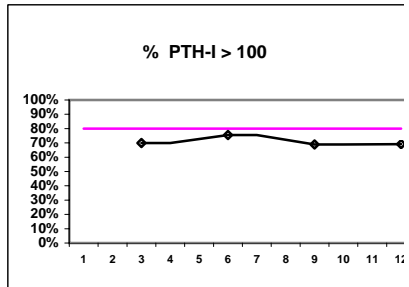
	J	F	M	A	M	J	J	A	S	O	N	D
# Calcium	78	85	84	80	85	87	89	92	92	93	95	89
# Calcium < 11.0	71	77	80	78	82	80	81	91	82	82	87	87
Pop. Mean =	9.6	9.6	9.4	9.3	8.9	9.4	9.3	8.8	9.6	9.7	9.4	9.2
Std. Deviation	1.05	0.91	0.95	0.87	0.90	0.98	1.15	0.95	1.31	1.10	1.07	1.02
Network Mean =												
Natl. Mean =												
<b>% Calcium &lt; 11.0</b>	<b>91%</b>	<b>91%</b>	<b>95%</b>	<b>98%</b>	<b>96%</b>	<b>92%</b>	<b>91%</b>	<b>99%</b>	<b>89%</b>	<b>88%</b>	<b>92%</b>	<b>98%</b>



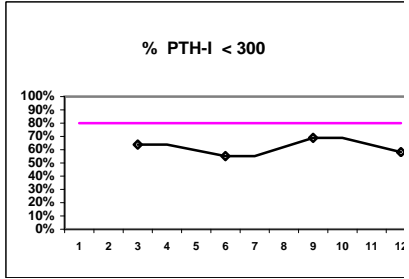
# Calcium	78	85	84	80	85	87	89	92	92	93	95	89
# Calcium > 8.5	65	76	74	64	60	69	65	51	76	83	77	66
Pop. Mean =	9.6	9.6	9.4	9.3	8.9	9.4	9.3	8.8	9.6	9.7	9.4	9.2
Std. Deviation =	1.05	0.91	0.95	0.87	0.90	0.98	1.15	0.95	1.31	1.10	1.07	1.02
Network Mean =												
Natl. Mean =												
<b>% Calcium &gt; 8.5</b>	<b>83%</b>	<b>89%</b>	<b>88%</b>	<b>80%</b>	<b>71%</b>	<b>79%</b>	<b>73%</b>	<b>55%</b>	<b>83%</b>	<b>89%</b>	<b>81%</b>	<b>74%</b>



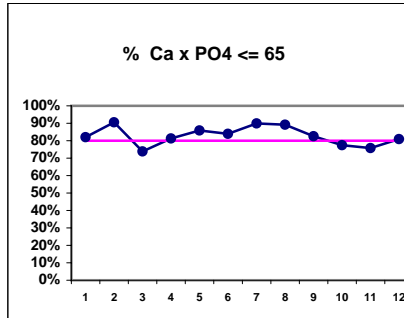
# PTH-I		83		49		90		55
# PTH-I > 100		58		37		62		38
Pop. Mean =		332		242		353		202
Std. Deviation =		378		394		508		318
Network Mean =								
Natl. Mean =								
<b>% PTH-I &gt; 100</b>		<b>70%</b>		<b>76%</b>		<b>69%</b>		<b>69%</b>



# PTH-I		83		49		90		55
# PTH-I < 300		53		27		62		32
Pop. Mean =		332		242		353		202
Std. Deviation =		378		394		508		318
Network Mean =								
Natl. Mean =								
<b>% PTH-I &lt; 300</b>		<b>64%</b>		<b>55%</b>		<b>69%</b>		<b>58%</b>

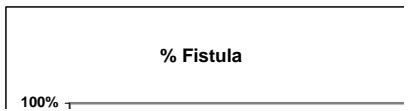


# Ca x PO4	78	85	84	80	85	87	89	92	92	93	95	89
# Ca x PO4 <= 65	64	77	62	65	73	73	80	82	76	72	72	72
Pop. Mean =	50.6	50.2	55.0	50.0	47.6	48.5	47.9	45.7	48.8	51.7	50.7	51.7
Std. Deviation =	16.9	13.2	16.2	15.0	15.6	15.9	14.0	14.9	17.0	19.8	19.4	17.8
Network Mean =												
Natl. Mean =												
<b>% Ca x PO4 &lt;= 65</b>	<b>82%</b>	<b>91%</b>	<b>74%</b>	<b>81%</b>	<b>86%</b>	<b>84%</b>	<b>90%</b>	<b>89%</b>	<b>83%</b>	<b>77%</b>	<b>76%</b>	<b>81%</b>



**IV. ACCESS**

J F M A M J J A S O N D



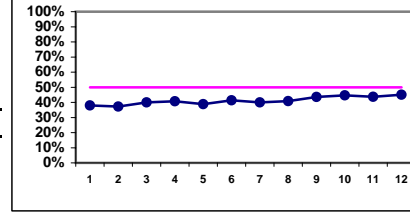
\*Methodology: a) Monthly values based on patient's monthly average of all values present for the month; b) Quarter values are average of all values for quarter; c) Values not averaged use last value present at months end.

**Elliott Bay Kidney Center - Center Hemodialysis**  
**Quality Assurance Reports (Excludes patients in first 6 months of treatment)**

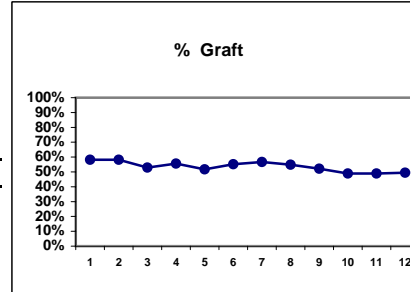
I,j - I.S. Dept.

Through period ending Dec. 31, 1999

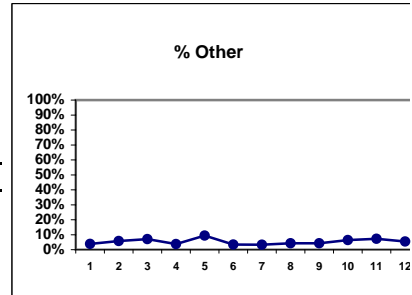
# Access	79	86	85	81	85	87	90	93	94	94	96	91
# Fistula	30	32	34	33	33	36	36	38	41	42	42	41
Network %												
Natl. %												
% Fistula	38%	37%	40%	41%	39%	41%	40%	41%	44%	45%	44%	45%



# Access	79	86	85	81	85	87	90	93	94	94	96	91
# Graft	46	50	45	45	44	48	51	51	49	46	47	45
Network %												
Natl. %												
% Graft	58%	58%	53%	56%	52%	55%	57%	55%	52%	49%	49%	49%

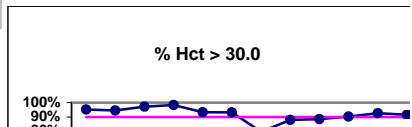


# Access	79	86	85	81	85	87	90	93	94	94	96	91
# Other	3	5	6	3	8	3	3	4	4	6	7	5
Network %												
Natl. %												
% Other	4%	6%	7%	4%	9%	3%	3%	4%	4%	6%	7%	5%



**V. ANEMIA**

	J	F	M	A	M	J	J	A	S	O	N	D
# Hct	63	73	72	60	75	74	69	75	78	62	95	83
# Hct > 30.0	60	69	70	59	70	69	55	66	69	56	88	76



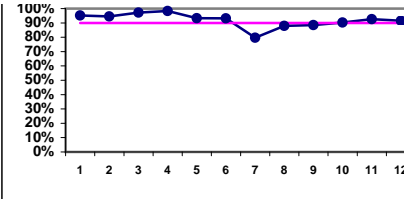
\*Methodology: a) Monthly values based on patient's monthly average of all values present for the month; b) Quarter values are average of all values for quarter; c) Values not averaged use last value present at months end.

**Elliott Bay Kidney Center - Center Hemodialysis**  
**Quality Assurance Reports (Excludes patients in first 6 months of treatment)**

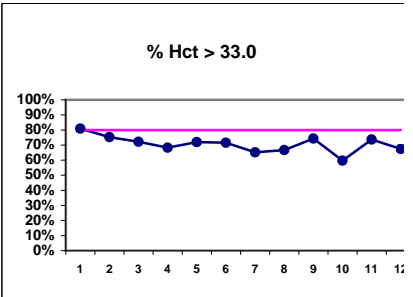
I.j - I.S. Dept.

Through period ending Dec. 31, 1999

Pop. Mean =	35.6	35.3	35.6	35.2	34.9	35.6	34.6	35.2	36.1	35.1	35.9	35.8
Std. Deviation =	3.95	3.90	3.97	3.33	4.00	4.04	4.34	4.55	8.16	4.67	4.48	4.24
Network Mean =												
*Natl. Mean =	33.2	33.2	33.2	33.2	33.2	33.2	33.2	33.2	33.2	33.2	33.2	33.2
% Hct > 30.0	95%	95%	97%	98%	93%	93%	80%	88%	88%	90%	93%	92%
*% Network > 30.0	85%	85%	85%	85%	85%	85%	85%	85%	85%	85%	85%	85%
*% Natl. > 30.0	79%	79%	79%	79%	79%	79%	79%	79%	79%	79%	79%	79%

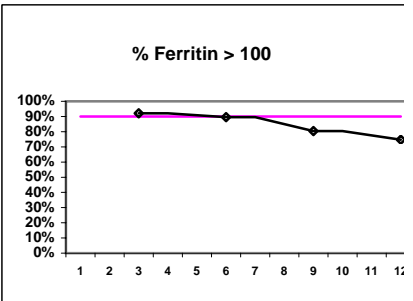


# Hct	63	73	72	60	75	74	69	75	78	62	95	83
# Hct > 33.0	51	55	52	41	54	53	45	50	58	37	70	56
Pop. Mean =	35.6	35.3	35.6	35.2	34.9	35.6	34.6	35.2	36.1	35.1	35.9	35.8
Std. Deviation =	3.95	3.90	3.97	3.33	4.00	4.04	4.34	4.55	8.16	4.67	4.48	4.24
Network Mean =												
*Natl. Mean =	33.2	33.2	33.2	33.2	33.2	33.2	33.2	33.2	33.2	33.2	33.2	33.2
% Hct > 33.0	81%	75%	72%	68%	72%	72%	65%	67%	74%	60%	74%	67%
*% Network > 33.0	64%	64%	64%	64%	64%	64%	64%	64%	64%	64%	64%	64%
*% Natl. > 33.0	56%	56%	56%	56%	56%	56%	56%	56%	56%	56%	56%	56%

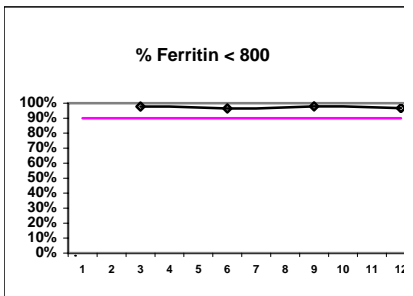


**Iron Profile**

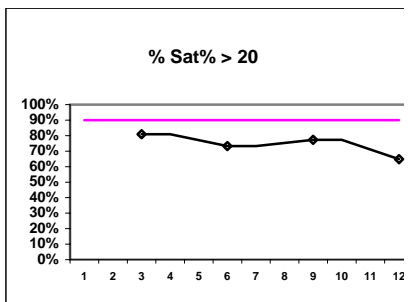
# Ferritin		89		86		92		91
# Ferritin > 100		82		77		74		68
Pop. Mean =		379		385		302		283
Std. Deviation =		250		416		206		254
Network Mean =								
Natl. Mean =								
% Ferritin > 100		92%		90%		80%		75%



# Ferritin		89		86		92		91
# Ferritin < 800		87		83		90		88
Pop. Mean =		379		385		302		283
Std. Deviation =		250		416		206		254
Network Mean =								
Natl. Mean =								
% Ferritin < 800		98%		97%		98%		97%

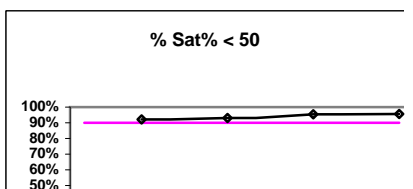


# % Sat		89		86		88		91
# % Sat > 20		72		63		68		59
Pop. Mean =		28.2		27.9		27.6		25.8
Std. Deviation =		12.3		12.9		11.5		11.7
Network Mean =								
Natl. Mean =								
% Sat% > 20		81%		73%		77%		65%



**V. ANEMIA - CONT.**

	J	F	M	A	M	J	J	A	S	O	N	D
# % Sat			89			86			88			91
# % Sat < 50			82			80			84			87
Pop. Mean =			28.2			27.9			27.6			25.8



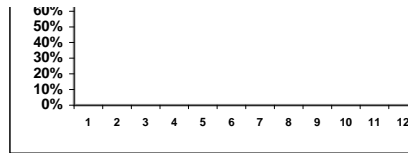
\*Methodology: a) Monthly values based on patient's monthly average of all values present for the month; b) Quarter values are average of all values for quarter; c) Values not averaged use last value present at months end.

**Elliott Bay Kidney Center - Center Hemodialysis**  
**Quality Assurance Reports (Excludes patients in first 6 months of treatment)**

I,j - I.S. Dept.

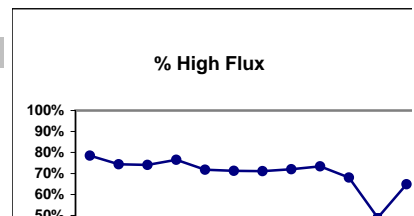
Through period ending Dec. 31, 1999

Std. Deviation =	12.3	12.9	11.5	11.7
Network Mean =				
Natl. Mean =				
<b>% Sat% &lt; 50</b>	<b>92%</b>	<b>93%</b>	<b>95%</b>	<b>96%</b>



**VI. OTHERS**

	J	F	M	A	M	J	J	A	S	O	N	D
<u>Dialyzer ratios</u>												
# Dialyzers	79	86	85	81	85	87	90	93	94	94	96	91
# High Flux	62	64	63	62	61	62	64	67	69	64	47	59



\*Methodology: a) Monthly values based on patient's monthly average of all values present for the month; b) Quarter values are average of all values for quarter; c) Values not averaged use last value present at months end.



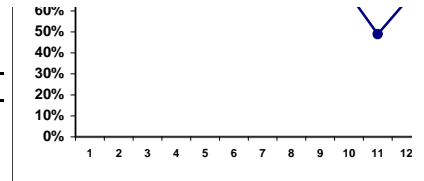
**Elliott Bay Kidney Center - Center Hemodialysis**  
**Quality Assurance Reports (Excludes patients in first 6 months of treatment)**  
**Through period ending Dec. 31, 1999**

I,j - I.S. Dept.

**Network %**

**Natl. %**

<b>% High Flux</b>	78%	74%	74%	77%	72%	71%	71%	72%	73%	68%	49%	65%
--------------------	-----	-----	-----	-----	-----	-----	-----	-----	-----	-----	-----	-----



**# Dialyzers**

	79	86	85	81	85	87	90	93	94	94	96	91
--	----	----	----	----	----	----	----	----	----	----	----	----

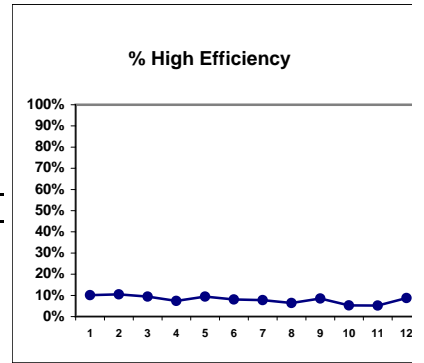
**# High Efficiency**

	8	9	8	6	8	7	7	6	8	5	5	8
--	---	---	---	---	---	---	---	---	---	---	---	---

**Network %**

**Natl. %**

<b>% High Efficiency</b>	10%	10%	9%	7%	9%	8%	8%	6%	9%	5%	5%	9%
--------------------------	-----	-----	----	----	----	----	----	----	----	----	----	----



**# Dialyzers**

	79	86	85	81	85	87	90	93	94	94	96	91
--	----	----	----	----	----	----	----	----	----	----	----	----

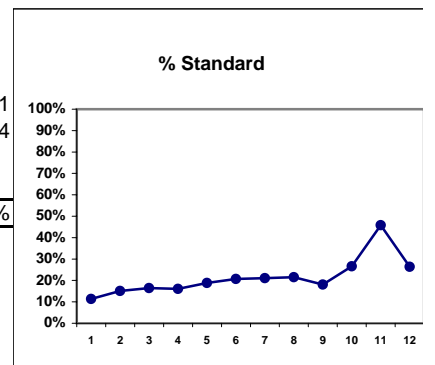
**# Standard**

	9	13	14	13	16	18	19	20	17	25	44	24
--	---	----	----	----	----	----	----	----	----	----	----	----

**Network %**

**Natl. %**

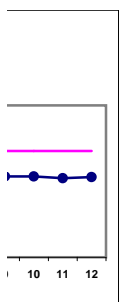
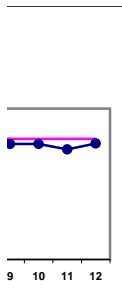
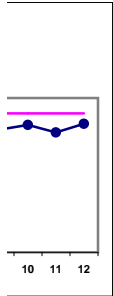
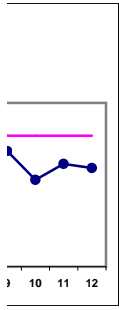
<b>% Standard</b>	11%	15%	16%	16%	19%	21%	21%	22%	18%	27%	46%	26%
-------------------	-----	-----	-----	-----	-----	-----	-----	-----	-----	-----	-----	-----



\*Methodology: a) Monthly values based on patient's monthly average of all values present for the month; b) Quarter values are average of all values for quarter; c) Values not averaged use last value present at months end.

**Elliott Bay Kidney Center - Center Hemodialysis**  
Quality Assurance Reports (Excludes patients in first 6 months of treatment)  
Through period ending Dec. 31, 1999

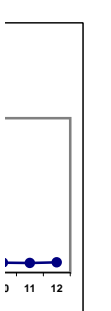
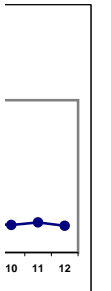
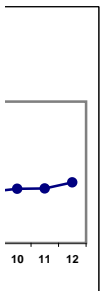
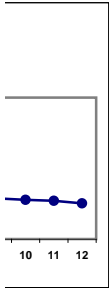
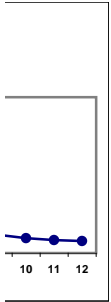
I,j - I.S. Dept.



\*Methodology: a) Monthly values based on patient's monthly average of all values present for the month; b) Quarter values are average of all values for quarter; c) Values not averaged use last value present at months end.

**Elliott Bay Kidney Center - Center Hemodialysis**  
Quality Assurance Reports (Excludes patients in first 6 months of treatment)  
Through period ending Dec. 31, 1999

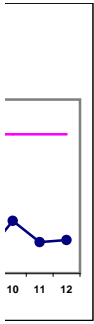
I,j - I.S. Dept.



\*Methodology: a) Monthly values based on patient's monthly average of all values present for the month; b) Quarter values are average of all values for quarter; c) Values not averaged use last value present at months end.

**Elliott Bay Kidney Center - Center Hemodialysis**  
Quality Assurance Reports (Excludes patients in first 6 months of treatment)  
Through period ending Dec. 31, 1999

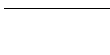
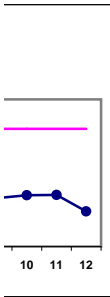
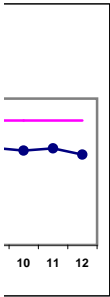
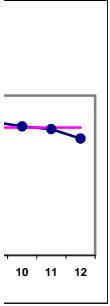
I,j - I.S. Dept.



\*Methodology: a) Monthly values based on patient's monthly average of all values present for the month; b) Quarter values are average of all values for quarter; c) Values not averaged use last value present at months end.

**Elliott Bay Kidney Center - Center Hemodialysis**  
Quality Assurance Reports (Excludes patients in first 6 months of treatment)  
Through period ending Dec. 31, 1999

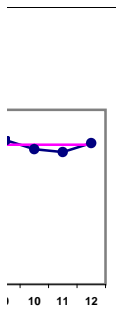
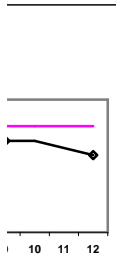
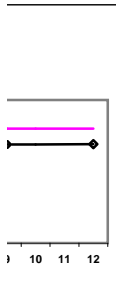
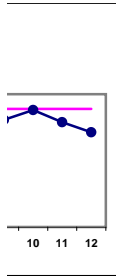
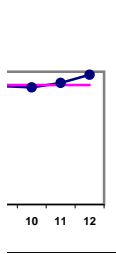
I,j - I.S. Dept.



**\*Methodology:** a) Monthly values based on patient's monthly average of all values present for the month; b) Quarter values are average of all values for quarter; c) Values not averaged use last value present at months end.

**Elliott Bay Kidney Center - Center Hemodialysis**  
**Quality Assurance Reports (Excludes patients in first 6 months of treatment)**  
**Through period ending Dec. 31, 1999**

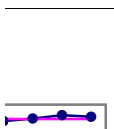
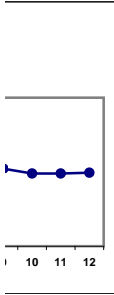
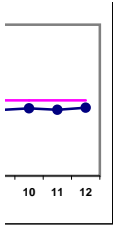
I,j - I.S. Dept.



**\*Methodology:** a) Monthly values based on patient's monthly average of all values present for the month; b) Quarter values are average of all values for quarter; c) Values not averaged use last value present at months end.

**Elliott Bay Kidney Center - Center Hemodialysis**  
Quality Assurance Reports (Excludes patients in first 6 months of treatment)  
Through period ending Dec. 31, 1999

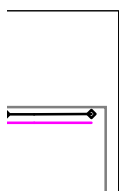
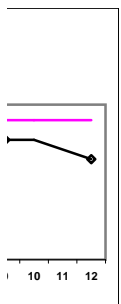
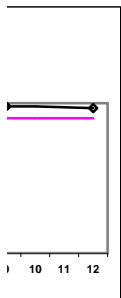
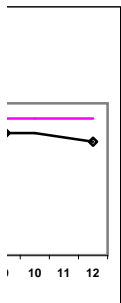
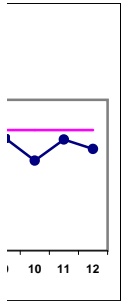
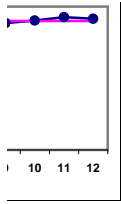
I,j - I.S. Dept.



\*Methodology: a) Monthly values based on patient's monthly average of all values present for the month; b) Quarter values are average of all values for quarter; c) Values not averaged use last value present at months end.

**Elliott Bay Kidney Center - Center Hemodialysis**  
**Quality Assurance Reports (Excludes patients in first 6 months of treatment)**  
**Through period ending Dec. 31, 1999**

I,j - I.S. Dept.

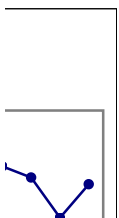
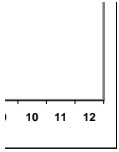


\*Methodology: a) Monthly values based on patient's monthly average of all values present for the month; b) Quarter values are average of all values for quarter; c) Values not averaged use last value present at months end.



**Elliott Bay Kidney Center - Center Hemodialysis**  
**Quality Assurance Reports (Excludes patients in first 6 months of treatment)**  
**Through period ending Dec. 31, 1999**

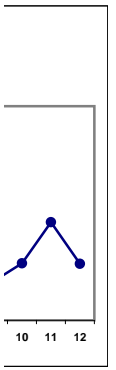
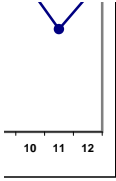
I,j - I.S. Dept.



**\*Methodology: a) Monthly values based on patient's monthly average of all values present for the month; b) Quarter values are average of all values for quarter; c) Values not averaged use last value present at months end.**

**Elliott Bay Kidney Center - Center Hemodialysis**  
Quality Assurance Reports (Excludes patients in first 6 months of treatment)  
Through period ending Dec. 31, 1999

I,j - I.S. Dept.



\*Methodology: a) Monthly values based on patient's monthly average of all values present for the month; b) Quarter values are average of all values for quarter; c) Values not averaged use last value present at months end.