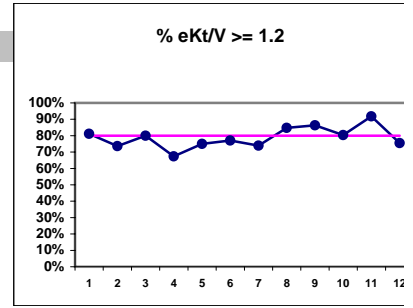


**Cascade Kidney Center - Center Hemodialysis**  
**Quality Assurance Reports (Excludes patients in first 6 months of treatment)**  
**Through period ending Dec. 31, 1999**

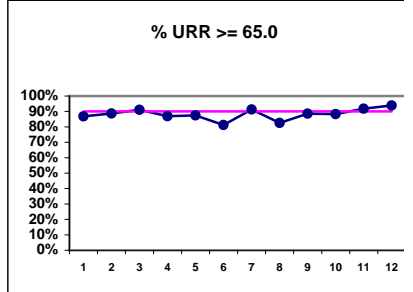
I.j - I.S. Dept.

**I. ADEQUACY OF DIALYSIS**

	J	F	M	A	M	J	J	A	S	O	N	D
# eKt/V	53	53	45	46	48	48	46	46	44	51	49	49
# eKt/V >= 1.2	43	39	36	31	36	37	34	39	38	41	45	37
Pop. Mean =	1.36	1.33	1.31	1.25	1.29	1.30	1.36	1.39	1.45	1.34	1.40	1.34
Std. Deviation =	0.33	0.20	0.23	0.23	0.25	0.26	0.25	0.21	0.22	0.23	0.19	0.20
Network Mean =												
Natl. Mean =												
% eKt/V >= 1.2	81%	74%	80%	67%	75%	77%	74%	85%	86%	80%	92%	76%

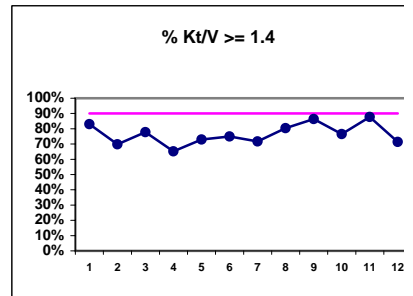


# URR	53	53	45	46	48	48	46	46	44	51	49	49
# URR >= 65.0	46	47	41	40	42	39	42	38	39	45	45	46
Pop. Mean =	72.7	72.6	72.3	70.6	71.4	71.4	72.1	72.3	72.9	72.7	74.8	72.9
Std. Deviation =	11.5	5.88	6.35	7.78	7.40	7.93	7.58	8.05	7.20	6.56	6.41	6.12
Network Mean =	74.0	74.0	74.0	74.0	74.0	74.0	74.0	74.0	74.0	74.0	74.0	74.0
*Natl. Mean =	68.0	68.0	68.0	68.0	68.0	68.0	68.0	68.0	68.0	68.0	68.0	68.0
% URR >= 65.0	87%	89%	91%	87%	88%	81%	91%	83%	89%	88%	92%	94%
*Natl. % > 65.0	72%	72%	72%	72%	72%	72%	72%	72%	72%	72%	72%	72%



\* Figures for 1997

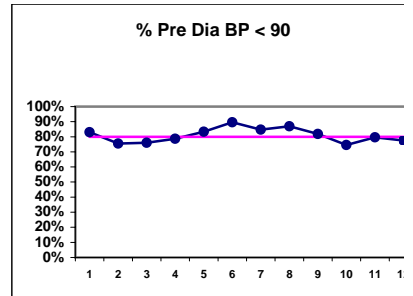
# Kt/V	53	53	45	46	48	48	46	46	44	51	49	49
# Kt/V >= 1.4	44	37	35	30	35	36	33	37	38	39	43	35
Pop. Mean =	1.60	1.57	1.53	1.47	1.51	1.52	1.59	1.63	1.69	1.56	1.63	1.55
Std. Deviation =	0.41	0.25	0.27	0.27	0.30	0.31	0.30	0.25	0.26	0.28	0.23	0.25
Network Mean =												
*Natl. Mean =	1.39	1.39	1.39	1.39	1.39	1.39	1.39	1.39	1.39	1.39	1.39	1.39
% Kt/V >= 1.4	83%	70%	78%	65%	73%	75%	72%	80%	86%	76%	88%	71%
% Kt/V > 1.2	87%	85%	93%	91%	88%	85%	91%	93%	93%	90%	96%	94%
*Network % > 1.2	79%	79%	79%	79%	79%	79%	79%	79%	79%	79%	79%	79%
*Natl. % > 1.2	78%	78%	78%	78%	78%	78%	78%	78%	78%	78%	78%	78%



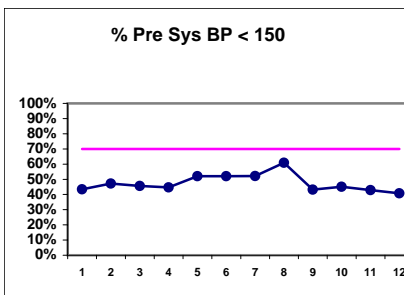
\* Figures for 1997

**Blood Pressure Control (Pre)**

# Pre Dia BP	53	53	46	47	48	48	46	46	44	51	49	49
# Pre Dia BP < 90	44	40	35	37	40	43	39	40	36	38	39	38
Pop. Mean =	80	80	80	80	78	77	78	78	82	80	81	83
Std. Deviation =	12.0	12.3	13.9	13.3	12.5	11.8	14.3	11.2	14.2	12.2	13.2	13.8
Network Mean =												
Natl. Mean =												
% Pre Dia BP < 90	83%	75%	76%	79%	83%	90%	85%	87%	82%	75%	80%	78%



# Pre Sys BP	53	53	46	47	48	48	46	46	44	51	49	49
# Pre Sys BP < 150	23	25	21	21	25	25	24	28	19	23	21	20
Pop. Mean =	153	154	154	153	150	146	147	148	152	151	152	153
Std. Deviation =	21.6	21.0	24.1	24.2	24.1	21.4	20.9	21.2	20.4	20.1	21.1	21.1
Network Mean =												
Natl. Mean =												
% Pre Sys BP < 150	43%	47%	46%	45%	52%	52%	52%	61%	43%	45%	43%	41%



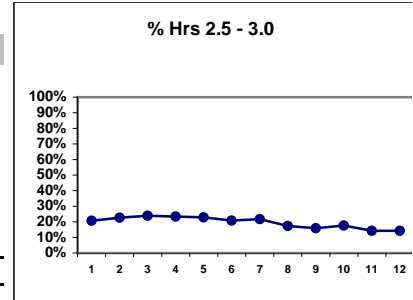
\*Methodology: a) Monthly values based on patient's monthly average of all values present for the month; b) Quarter values are average of all values for quarter; c) Values not averaged use last value present at months end.

**Cascade Kidney Center - Center Hemodialysis**  
**Quality Assurance Reports (Excludes patients in first 6 months of treatment)**  
**Through period ending Dec. 31, 1999**

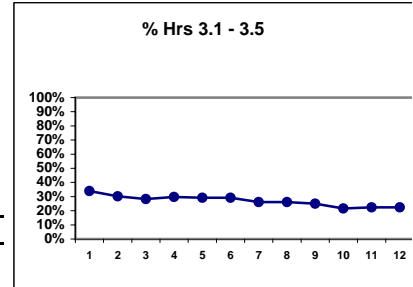
I,j - I.S. Dept.

**I. ADEQUACY OF DIALYSIS - CONT.**

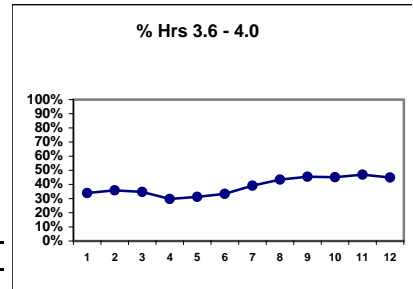
	J	F	M	A	M	J	J	A	S	O	N	D
# Dialysis Hrs	53	53	46	47	48	48	46	46	44	51	49	49
# Hrs. 2.5 - 3.0	11	12	11	11	11	10	10	8	7	9	7	7
Pop. Mean =	3.6	3.6	3.6	3.6	3.6	3.6	3.7	3.7	3.7	3.8	3.8	3.8
Std. Deviation =	0.51	0.51	0.52	0.53	0.53	0.54	0.54	0.51	0.51	0.48	0.50	0.50
Network Mean =												
Natl. Mean =												
<b>% Hrs. 2.5 - 3.0</b>	<b>21%</b>	<b>23%</b>	<b>24%</b>	<b>23%</b>	<b>23%</b>	<b>21%</b>	<b>22%</b>	<b>17%</b>	<b>16%</b>	<b>18%</b>	<b>14%</b>	<b>14%</b>



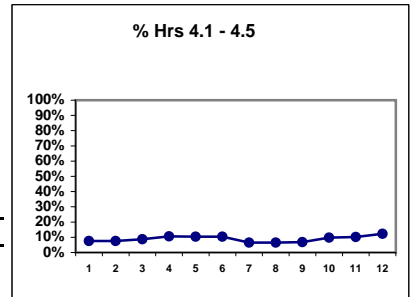
# Dialysis Hrs	53	53	46	47	48	48	46	46	44	51	49	49
# Hrs 3.1 - 3.5	18	16	13	14	14	14	12	12	11	11	11	11
Pop. Mean =	3.6	3.6	3.6	3.6	3.6	3.6	3.7	3.7	3.7	3.8	3.8	3.8
Std. Deviation =	0.51	0.51	0.52	0.53	0.53	0.54	0.54	0.51	0.51	0.48	0.50	0.50
Network Mean =												
Natl. Mean =												
<b>% Hrs 3.1 - 3.5</b>	<b>34%</b>	<b>30%</b>	<b>28%</b>	<b>30%</b>	<b>29%</b>	<b>29%</b>	<b>26%</b>	<b>26%</b>	<b>25%</b>	<b>22%</b>	<b>22%</b>	<b>22%</b>



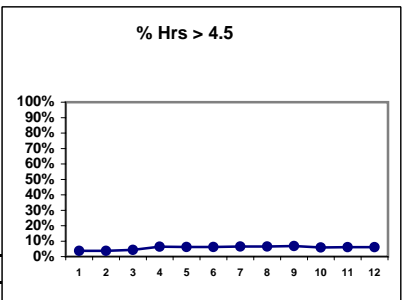
# Dialysis Hrs	53	53	46	47	48	48	46	46	44	51	49	49
# Hrs 3.6 - 4.0	18	19	16	14	15	16	18	20	20	23	23	22
Pop. Mean =	3.6	3.6	3.6	3.6	3.6	3.6	3.7	3.7	3.7	3.8	3.8	3.8
Std. Deviation =	0.51	0.51	0.52	0.53	0.53	0.54	0.54	0.51	0.51	0.48	0.50	0.50
Network Mean =												
Natl. Mean =												
<b>% Hrs 3.6 - 4.0</b>	<b>34%</b>	<b>36%</b>	<b>35%</b>	<b>30%</b>	<b>31%</b>	<b>33%</b>	<b>39%</b>	<b>43%</b>	<b>45%</b>	<b>45%</b>	<b>47%</b>	<b>45%</b>



# Dialysis Hrs	53	53	46	47	48	48	46	46	44	51	49	49
# Hrs 4.1 - 4.5	4	4	4	5	5	5	3	3	3	5	5	6
Pop. Mean =	3.6	3.6	3.6	3.6	3.6	3.6	3.7	3.7	3.7	3.8	3.8	3.8
Std. Deviation =	0.51	0.51	0.52	0.53	0.53	0.54	0.54	0.51	0.51	0.48	0.50	0.50
Network Mean =												
Natl. Mean =												
<b>% Hrs 4.1 - 4.5</b>	<b>8%</b>	<b>8%</b>	<b>9%</b>	<b>11%</b>	<b>10%</b>	<b>10%</b>	<b>7%</b>	<b>7%</b>	<b>7%</b>	<b>10%</b>	<b>10%</b>	<b>12%</b>



# Dialysis Hrs	53	53	46	47	48	48	46	46	44	51	49	49
# Hrs > 4.5	2	2	2	3	3	3	3	3	3	3	3	3
Pop. Mean =	3.6	3.6	3.6	3.6	3.6	3.6	3.7	3.7	3.7	3.8	3.8	3.8
Std. Deviation =	0.51	0.51	0.52	0.53	0.53	0.54	0.54	0.51	0.51	0.48	0.50	0.50
Network Mean =												
Natl. Mean =												
<b>% Hrs &gt; 4.5</b>	<b>4%</b>	<b>4%</b>	<b>4%</b>	<b>6%</b>	<b>6%</b>	<b>6%</b>	<b>7%</b>	<b>7%</b>	<b>7%</b>	<b>6%</b>	<b>6%</b>	<b>6%</b>



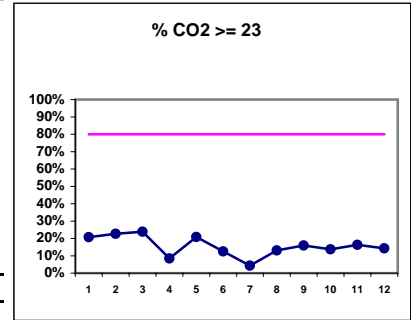
\*Methodology: a) Monthly values based on patient's monthly average of all values present for the month; b) Quarter values are average of all values for quarter; c) Values not averaged use last value present at months end.

**Cascade Kidney Center - Center Hemodialysis**  
**Quality Assurance Reports (Excludes patients in first 6 months of treatment)**  
**Through period ending Dec. 31, 1999**

I,j - I.S. Dept.

**I. ADEQUACY OF DIALYSIS - CONT.**

	J	F	M	A	M	J	J	A	S	O	N	D
# CO2	53	53	46	47	48	48	46	46	44	51	49	49
# CO2 >= 23	11	12	11	4	10	6	2	6	7	7	8	7
Pop. Mean =	21	21	21	19	20	20	18	19	20	20	20	20
Std. Deviation =	2.19	3.19	2.64	2.94	3.31	2.13	2.67	2.99	2.13	2.57	2.34	2.55
Network Mean =												
Natl. Mean =												
<b>% CO2 &gt;= 23</b>	<b>21%</b>	<b>23%</b>	<b>24%</b>	<b>9%</b>	<b>21%</b>	<b>13%</b>	<b>4%</b>	<b>13%</b>	<b>16%</b>	<b>14%</b>	<b>16%</b>	<b>14%</b>



(Note: Jan & Feb Albumin values are adjusted by +0.2)

\*Albumin values use BCP method)

\*Methodology: a) Monthly values based on patient's monthly average of all values present for the month; b) Quarter values are average of all values for quarter; c) Values not averaged use last value present at months end.

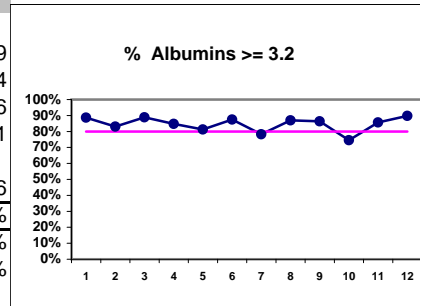
**Cascade Kidney Center - Center Hemodialysis**  
**Quality Assurance Reports (Excludes patients in first 6 months of treatment)**  
**Through period ending Dec. 31, 1999**

I,j - I.S. Dept.

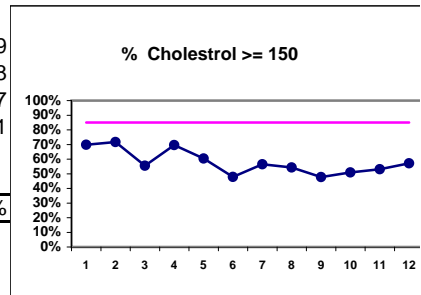
**II. NUTRITION**

	J	F	M	A	M	J	J	A	S	O	N	D
# Albumin	53	53	45	46	48	48	46	46	44	51	49	49
# Albumin >= 3.2	47	44	40	39	39	42	36	40	38	38	42	44
Pop. Mean =	3.6	3.4	3.4	3.4	3.4	3.4	3.4	3.5	3.5	3.4	3.5	3.6
Std. Deviation =	0.27	0.25	0.38	0.25	0.33	0.28	0.33	0.31	0.32	0.38	0.37	0.31
Network Mean =												
Natl. Mean =	3.6	3.6	3.6	3.6	3.6	3.6	3.6	3.6	3.6	3.6	3.6	3.6
% Albumin >= 3.2	89%	83%	89%	85%	81%	88%	78%	87%	86%	75%	86%	90%
*Network % >= 3.2	76%	76%	76%	76%	76%	76%	76%	76%	76%	76%	76%	76%
*Natl. % >= 3.2	83%	83%	83%	83%	83%	83%	83%	83%	83%	83%	83%	83%

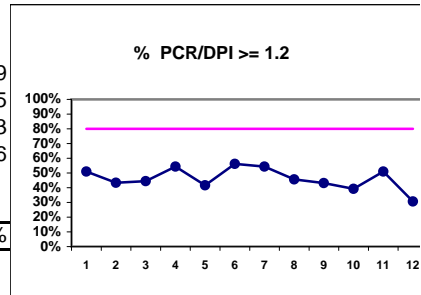
\*Figures for 1997



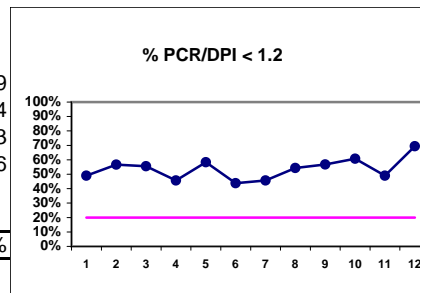
# Cholesterol	53	53	45	46	48	48	46	46	44	51	49	49
# Chol. >= 150	37	38	25	32	29	23	26	25	21	26	26	28
Pop. Mean =	178	182	163	166	160	156	157	163	159	159	157	157
Std. Deviation =	44.6	47.0	32.2	41.8	34.9	30.6	27.4	31.9	33.6	43.8	39.0	32.1
Network Mean =												
Natl. Mean =												
% Chol. >= 150	70%	72%	56%	70%	60%	48%	57%	54%	48%	51%	53%	57%



# PCR/DPI	53	53	45	46	48	48	46	46	44	51	49	49
# PCR/DPI >= 1.2	27	23	20	25	20	27	25	21	19	20	25	15
Pop. Mean =	1.11	1.08	1.11	1.15	1.12	1.14	1.12	1.09	1.09	1.09	1.08	1.03
Std. Deviation =	0.27	0.24	0.27	0.24	0.27	0.32	0.27	0.27	0.25	0.25	0.21	0.26
Network Mean =												
Natl. Mean =												
% PCR/DPI >= 1.2	51%	43%	44%	54%	42%	56%	54%	46%	43%	39%	51%	31%



# PCR/DPI	53	53	45	46	48	48	46	46	44	51	49	49
# PCR/DPI < 1.2	26	30	25	21	28	21	21	25	25	31	24	34
Pop. Mean =	1.11	1.08	1.11	1.15	1.12	1.14	1.12	1.09	1.09	1.09	1.08	1.03
Std. Deviation =	0.27	0.24	0.27	0.24	0.27	0.32	0.27	0.27	0.25	0.25	0.21	0.26
Network Mean =												
Natl. Mean =												
% PCR/DPI < 1.2	49%	57%	56%	46%	58%	44%	46%	54%	57%	61%	49%	69%



**III. OSTEODYSTROPHY**

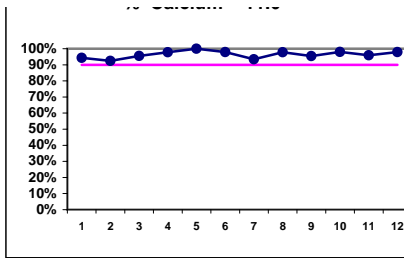
% Calcium < 11.0

\*Methodology: a) Monthly values based on patient's monthly average of all values present for the month; b) Quarter values are average of all values for quarter; c) Values not averaged use last value present at months end.

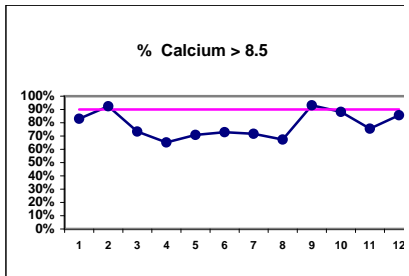
**Cascade Kidney Center - Center Hemodialysis**  
**Quality Assurance Reports (Excludes patients in first 6 months of treatment)**  
**Through period ending Dec. 31, 1999**

I,j - I.S. Dept.

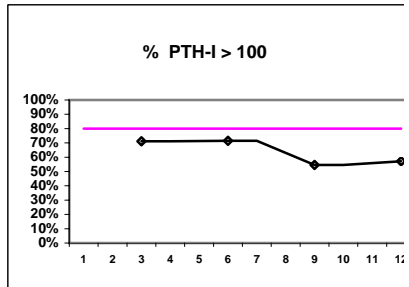
	J	F	M	A	M	J	J	A	S	O	N	D
# Calcium	53	53	45	46	48	48	46	46	44	51	49	49
# Calcium < 11.0	50	49	43	45	48	47	43	45	42	50	47	48
Pop. Mean =	9.6	9.5	9.2	9.1	9.0	9.1	9.1	8.9	9.5	9.4	9.3	9.5
Std. Deviation =	1.03	0.90	0.98	1.09	0.81	0.89	1.15	0.98	0.89	0.89	0.92	0.83
Network Mean =												
Natl. Mean =												
<b>% Calcium &lt; 11.0</b>	<b>94%</b>	<b>92%</b>	<b>96%</b>	<b>98%</b>	<b>100%</b>	<b>98%</b>	<b>93%</b>	<b>98%</b>	<b>95%</b>	<b>98%</b>	<b>96%</b>	<b>98%</b>



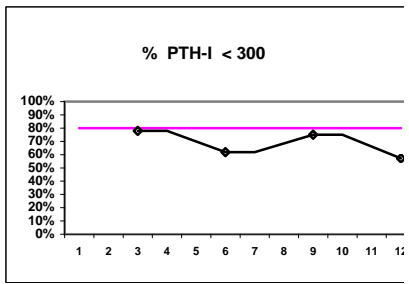
# Calcium	53	53	45	46	48	48	46	46	44	51	49	49
# Calcium > 8.5	44	49	33	30	34	35	33	31	41	45	37	42
Pop. Mean =	9.6	9.5	9.2	9.1	9.0	9.1	9.1	8.9	9.5	9.4	9.3	9.5
Std. Deviation =	1.03	0.90	0.98	1.09	0.81	0.89	1.15	0.98	0.89	0.89	0.92	0.83
Network Mean =												
Natl. Mean =												
<b>% Calcium &gt; 8.5</b>	<b>83%</b>	<b>92%</b>	<b>73%</b>	<b>65%</b>	<b>71%</b>	<b>73%</b>	<b>72%</b>	<b>67%</b>	<b>93%</b>	<b>88%</b>	<b>76%</b>	<b>86%</b>



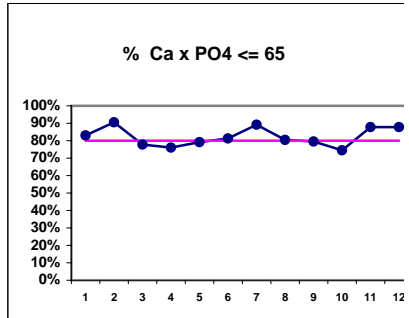
# PTH-I			59			21			44			28
# PTH-I > 100			42			15			24			16
Pop. Mean =			207			143			219			164
Std. Deviation =			198			251			242			270
Network Mean =												
Natl. Mean =												
<b>% PTH-I &gt; 100</b>			<b>71%</b>			<b>71%</b>			<b>55%</b>			<b>57%</b>



# PTH-I			59			21			44			28
# PTH-I < 300			46			13			33			16
Pop. Mean =			207			143			219			164
Std. Deviation =			198			251			242			270
Network Mean =												
Natl. Mean =												
<b>% PTH-I &lt; 300</b>			<b>78%</b>			<b>62%</b>			<b>75%</b>			<b>57%</b>

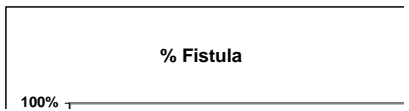


# Ca x PO4	53	53	45	46	48	48	46	46	44	51	49	49
# Ca x PO4 <= 65	44	48	35	35	38	39	41	37	35	38	43	43
Pop. Mean =	52.2	46.8	52.8	56.0	51.6	50.9	46.5	50.0	52.7	53.2	48.7	46.6
Std. Deviation =	14.7	14.9	14.6	15.8	14.9	14.6	16.2	19.0	15.3	16.0	13.9	14.4
Network Mean =												
Natl. Mean =												
<b>% Ca x PO4 &lt;= 65</b>	<b>83%</b>	<b>91%</b>	<b>78%</b>	<b>76%</b>	<b>79%</b>	<b>81%</b>	<b>89%</b>	<b>80%</b>	<b>80%</b>	<b>75%</b>	<b>88%</b>	<b>88%</b>



**IV. ACCESS**

J F M A M J J A S O N D



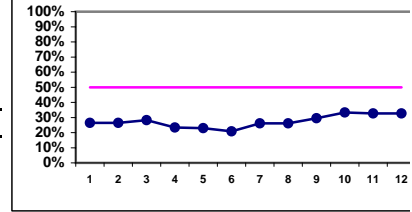
\*Methodology: a) Monthly values based on patient's monthly average of all values present for the month; b) Quarter values are average of all values for quarter; c) Values not averaged use last value present at months end.

**Cascade Kidney Center - Center Hemodialysis**  
**Quality Assurance Reports (Excludes patients in first 6 months of treatment)**

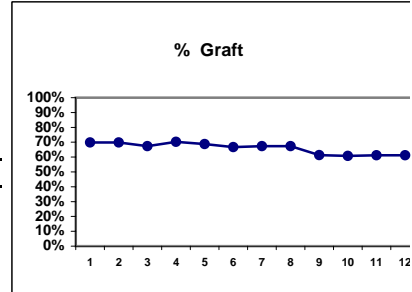
I,j - I.S. Dept.

Through period ending Dec. 31, 1999

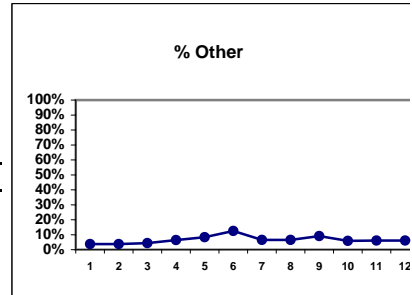
# Access	53	53	46	47	48	48	46	46	44	51	49	49
# Fistula	14	14	13	11	11	10	12	12	13	17	16	16
Network %												
Natl. %												
% Fistula	26%	26%	28%	23%	23%	21%	26%	26%	30%	33%	33%	33%



# Access	53	53	46	47	48	48	46	46	44	51	49	49
# Graft	37	37	31	33	33	32	31	31	27	31	30	30
Network %												
Natl. %												
% Graft	70%	70%	67%	70%	69%	67%	67%	67%	61%	61%	61%	61%

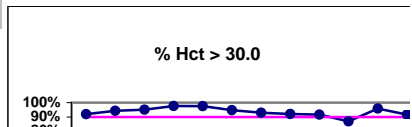


# Access	53	53	46	47	48	48	46	46	44	51	49	49
# Other	2	2	2	3	4	6	3	3	4	3	3	3
Network %												
Natl. %												
% Other	4%	4%	4%	6%	8%	13%	7%	7%	9%	6%	6%	6%



**V. ANEMIA**

	J	F	M	A	M	J	J	A	S	O	N	D
# Hct	50	53	41	43	41	38	43	38	36	46	48	36
# Hct > 30.0	46	50	39	42	40	36	40	35	33	40	46	33



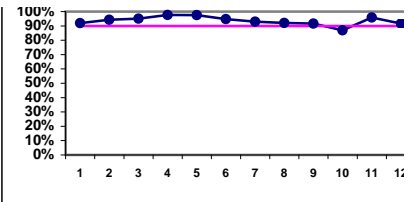
\*Methodology: a) Monthly values based on patient's monthly average of all values present for the month; b) Quarter values are average of all values for quarter; c) Values not averaged use last value present at months end.

**Cascade Kidney Center - Center Hemodialysis**  
**Quality Assurance Reports (Excludes patients in first 6 months of treatment)**

I.j - I.S. Dept.

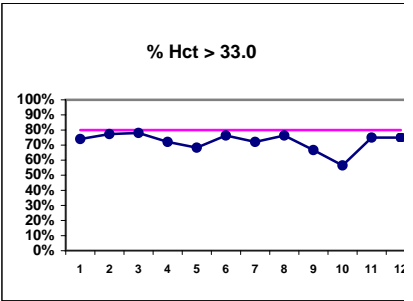
**Through period ending Dec. 31, 1999**

<b>Pop. Mean =</b>	34.6	34.3	35.1	34.5	35.4	36.6	35.5	35.7	35.1	35.4	35.5	36.3
<b>Std. Deviation =</b>	4.69	4.29	4.38	4.43	5.40	4.85	5.03	4.57	4.40	5.60	4.21	5.35
<b>Network Mean =</b>												
<b>*Natl. Mean =</b>	33.2	33.2	33.2	33.2	33.2	33.2	33.2	33.2	33.2	33.2	33.2	33.2
<b>% Hct &gt; 30.0</b>	92%	94%	95%	98%	98%	95%	93%	92%	92%	87%	96%	92%
<b>*% Network &gt; 30.0</b>	85%	85%	85%	85%	85%	85%	85%	85%	85%	85%	85%	85%
<b>*% Natl. &gt; 30.0</b>	79%	79%	79%	79%	79%	79%	79%	79%	79%	79%	79%	79%



\* Figures for 1997

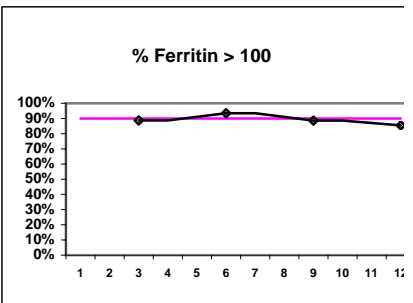
<b># Hct</b>	50	53	41	43	41	38	43	38	36	46	48	36
<b># Hct &gt; 33.0</b>	37	41	32	31	28	29	31	29	24	26	36	27
<b>Pop. Mean =</b>	34.6	34.3	35.1	34.5	35.4	36.6	35.5	35.7	35.1	35.4	35.5	36.3
<b>Std. Deviation =</b>	4.69	4.29	4.38	4.43	5.40	4.85	5.03	4.57	4.40	5.60	4.21	5.35
<b>Network Mean =</b>												
<b>*Natl. Mean =</b>	33.2	33.2	33.2	33.2	33.2	33.2	33.2	33.2	33.2	33.2	33.2	33.2
<b>% Hct &gt; 33.0</b>	74%	77%	78%	72%	68%	76%	72%	76%	67%	57%	75%	75%
<b>*% Network &gt; 33.0</b>	64%	64%	64%	64%	64%	64%	64%	64%	64%	64%	64%	64%
<b>*% Natl. &gt; 33.0</b>	56%	56%	56%	56%	56%	56%	56%	56%	56%	56%	56%	56%



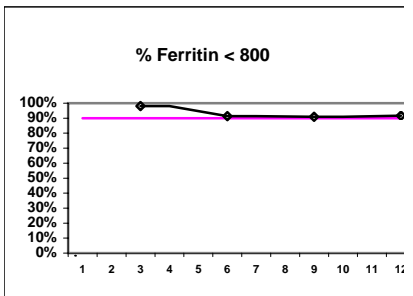
\*Figures for 1997

**Iron Profile**

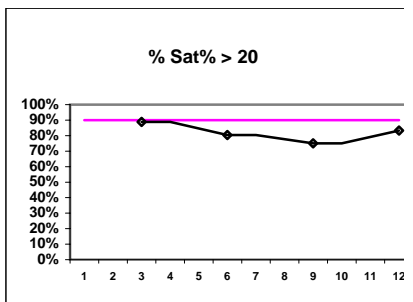
<b># Ferritin</b>		53		46		44		48
<b># Ferritin &gt; 100</b>		47		43		39		41
<b>Pop. Mean =</b>		377		390		429		375
<b>Std. Deviation =</b>		204		250		557		262
<b>Network Mean =</b>								
<b>Natl. Mean =</b>								
<b>% Ferritin &gt; 100</b>		89%		93%		89%		85%



<b># Ferritin</b>		53		46		44		48
<b># Ferritin &lt; 800</b>		52		42		40		44
<b>Pop. Mean =</b>		377		390		429		375
<b>Std. Deviation =</b>		204		250		557		262
<b>Network Mean =</b>								
<b>Natl. Mean =</b>								
<b>% Ferritin &lt; 800</b>		98%		91%		91%		92%

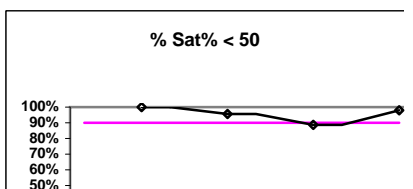


<b># % Sat</b>		54		46		44		48
<b># % Sat &gt; 20</b>		48		37		33		40
<b>Pop. Mean =</b>		28.2		30.4		28.6		29.3
<b>Std. Deviation =</b>		8.5		9.9		11.8		9.6
<b>Network Mean =</b>								
<b>Natl. Mean =</b>								
<b>% Sat% &gt; 20</b>		89%		80%		75%		83%



**V. ANEMIA - CONT.**

	<b>J</b>	<b>F</b>	<b>M</b>	<b>A</b>	<b>M</b>	<b>J</b>	<b>J</b>	<b>A</b>	<b>S</b>	<b>O</b>	<b>N</b>	<b>D</b>
<b># % Sat</b>			54			46			44			48
<b># % Sat &lt; 50</b>			54			44			39			47
<b>Pop. Mean =</b>			28.2			30.4			28.6			29.3



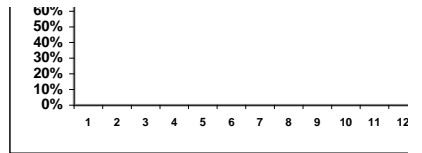
\*Methodology: a) Monthly values based on patient's monthly average of all values present for the month; b) Quarter values are average of all values for quarter; c) Values not averaged use last value present at months end.

**Cascade Kidney Center - Center Hemodialysis**  
**Quality Assurance Reports (Excludes patients in first 6 months of treatment)**

I,j - I.S. Dept.

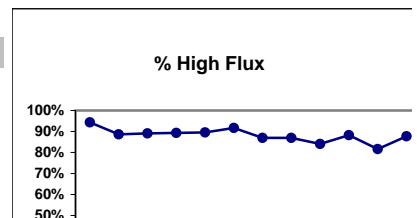
Through period ending Dec. 31, 1999

Std. Deviation =	8.5	9.9	11.8	9.6
Network Mean =				
Natl. Mean =				
<b>% Sat% &lt; 50</b>	<b>100%</b>	<b>96%</b>	<b>89%</b>	<b>98%</b>



**VI. OTHERS**

	J	F	M	A	M	J	J	A	S	O	N	D
<b>Dialyzer ratios</b>												
# Dialyzers	53	53	46	47	48	48	46	46	44	51	49	49
# High Flux	50	47	41	42	43	44	40	40	37	45	40	43



\*Methodology: a) Monthly values based on patient's monthly average of all values present for the month; b) Quarter values are average of all values for quarter; c) Values not averaged use last value present at months end.



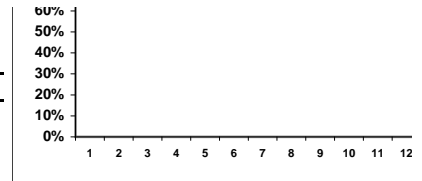
**Cascade Kidney Center - Center Hemodialysis**  
**Quality Assurance Reports (Excludes patients in first 6 months of treatment)**  
**Through period ending Dec. 31, 1999**

I,j - I.S. Dept.

**Network %**

**Natl. %**

<b>% High Flux</b>	94%	89%	89%	89%	90%	92%	87%	87%	84%	88%	82%	88%
--------------------	-----	-----	-----	-----	-----	-----	-----	-----	-----	-----	-----	-----



**# Dialyzers**

	53	53	46	47	48	48	46	46	44	51	49	49
--	----	----	----	----	----	----	----	----	----	----	----	----

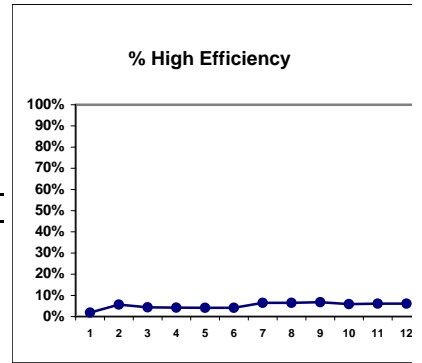
**# High Efficiency**

	1	3	2	2	2	2	3	3	3	3	3	3
--	---	---	---	---	---	---	---	---	---	---	---	---

**Network %**

**Natl. %**

<b>% High Efficiency</b>	2%	6%	4%	4%	4%	4%	7%	7%	7%	6%	6%	6%
--------------------------	----	----	----	----	----	----	----	----	----	----	----	----



**# Dialyzers**

	53	53	46	47	48	48	46	46	44	51	49	49
--	----	----	----	----	----	----	----	----	----	----	----	----

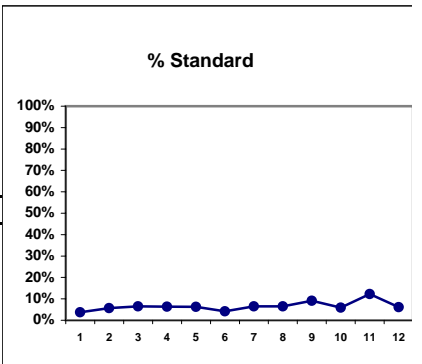
**# Standard**

	2	3	3	3	3	2	3	3	4	3	6	3
--	---	---	---	---	---	---	---	---	---	---	---	---

**Network %**

**Natl. %**

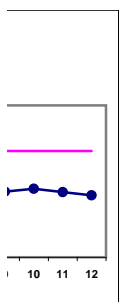
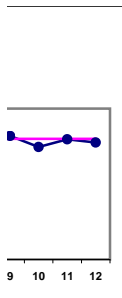
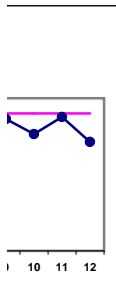
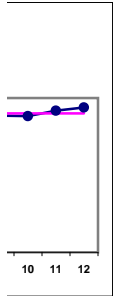
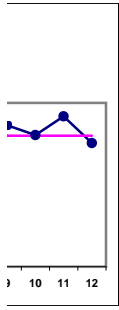
<b>% Standard</b>	4%	6%	7%	6%	6%	4%	7%	7%	9%	6%	12%	6%
-------------------	----	----	----	----	----	----	----	----	----	----	-----	----



\*Methodology: a) Monthly values based on patient's monthly average of all values present for the month; b) Quarter values are average of all values for quarter; c) Values not averaged use last value present at months end.

**Cascade Kidney Center - Center Hemodialysis**  
**Quality Assurance Reports (Excludes patients in first 6 months of treatment)**  
**Through period ending Dec. 31, 1999**

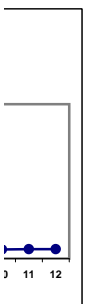
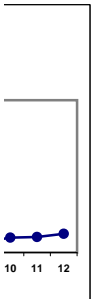
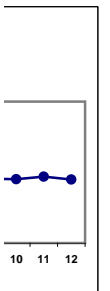
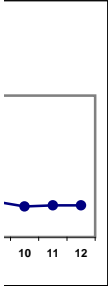
I,j - I.S. Dept.



\*Methodology: a) Monthly values based on patient's monthly average of all values present for the month; b) Quarter values are average of all values for quarter; c) Values not averaged use last value present at months end.

**Cascade Kidney Center - Center Hemodialysis**  
Quality Assurance Reports (Excludes patients in first 6 months of treatment)  
Through period ending Dec. 31, 1999

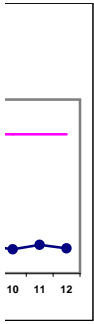
I,j - I.S. Dept.



\*Methodology: a) Monthly values based on patient's monthly average of all values present for the month; b) Quarter values are average of all values for quarter; c) Values not averaged use last value present at months end.

**Cascade Kidney Center - Center Hemodialysis**  
Quality Assurance Reports (Excludes patients in first 6 months of treatment)  
Through period ending Dec. 31, 1999

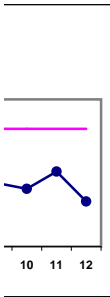
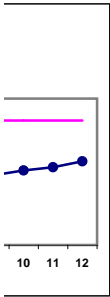
I,j - I.S. Dept.



\*Methodology: a) Monthly values based on patient's monthly average of all values present for the month; b) Quarter values are average of all values for quarter; c) Values not averaged use last value present at months end.

**Cascade Kidney Center - Center Hemodialysis**  
Quality Assurance Reports (Excludes patients in first 6 months of treatment)  
Through period ending Dec. 31, 1999

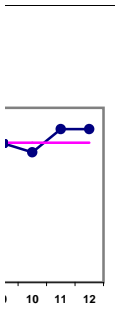
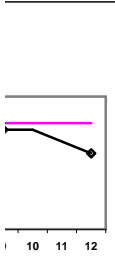
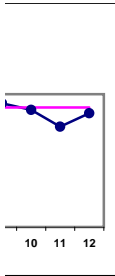
I,j - I.S. Dept.



**\*Methodology:** a) Monthly values based on patient's monthly average of all values present for the month; b) Quarter values are average of all values for quarter; c) Values not averaged use last value present at months end.

**Cascade Kidney Center - Center Hemodialysis**  
**Quality Assurance Reports (Excludes patients in first 6 months of treatment)**  
**Through period ending Dec. 31, 1999**

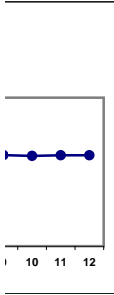
I,j - I.S. Dept.



\*Methodology: a) Monthly values based on patient's monthly average of all values present for the month; b) Quarter values are average of all values for quarter; c) Values not averaged use last value present at months end.

**Cascade Kidney Center - Center Hemodialysis**  
Quality Assurance Reports (Excludes patients in first 6 months of treatment)  
Through period ending Dec. 31, 1999

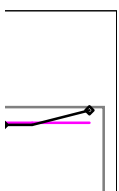
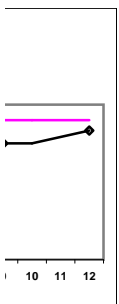
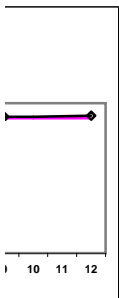
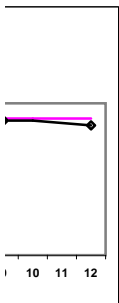
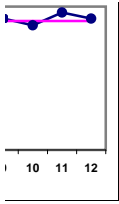
I,j - I.S. Dept.



\*Methodology: a) Monthly values based on patient's monthly average of all values present for the month; b) Quarter values are average of all values for quarter; c) Values not averaged use last value present at months end.

**Cascade Kidney Center - Center Hemodialysis**  
**Quality Assurance Reports (Excludes patients in first 6 months of treatment)**  
**Through period ending Dec. 31, 1999**

I,j - I.S. Dept.

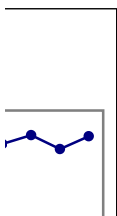
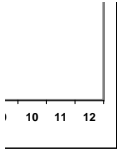


\*Methodology: a) Monthly values based on patient's monthly average of all values present for the month; b) Quarter values are average of all values for quarter; c) Values not averaged use last value present at months end.



**Cascade Kidney Center - Center Hemodialysis**  
Quality Assurance Reports (Excludes patients in first 6 months of treatment)  
Through period ending Dec. 31, 1999

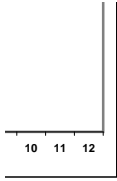
I,j - I.S. Dept.



**\*Methodology: a) Monthly values based on patient's monthly average of all values present for the month; b) Quarter values are average of all values for quarter; c) Values not averaged use last value present at months end.**

**Cascade Kidney Center - Center Hemodialysis**  
Quality Assurance Reports (Excludes patients in first 6 months of treatment)  
Through period ending Dec. 31, 1999

I,j - I.S. Dept.



\*Methodology: a) Monthly values based on patient's monthly average of all values present for the month; b) Quarter values are average of all values for quarter; c) Values not averaged use last value present at months end.