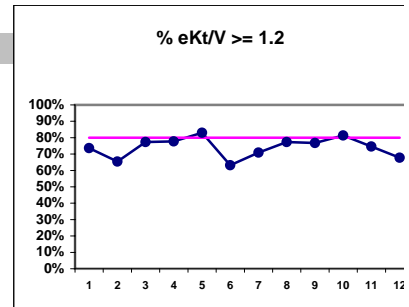


Auburn Kidney Center - Center Hemodialysis
Quality Assurance Reports (Excludes patients in first 6 months of treatment)
Through period ending Dec. 31, 1999

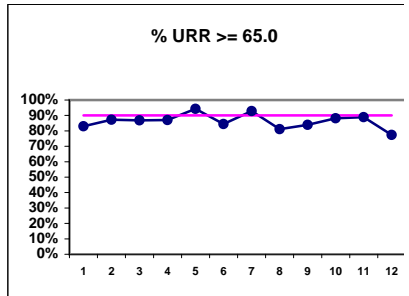
I.j - I.S. Dept.

I. ADEQUACY OF DIALYSIS

	J	F	M	A	M	J	J	A	S	O	N	D
# eKt/V	53	55	53	54	53	57	55	53	56	59	63	62
# eKt/V >= 1.2	39	36	41	42	44	36	39	41	43	48	47	42
Pop. Mean =	1.33	1.31	1.36	1.33	1.33	1.38	1.28	1.33	1.47	1.33	1.32	1.26
Std. Deviation =	0.20	0.23	0.30	0.22	0.33	0.20	0.24	0.25	0.55	0.21	0.20	0.29
Network Mean =												
Natl. Mean =												
% eKt/V >= 1.2	74%	65%	77%	78%	83%	63%	71%	77%	77%	81%	75%	68%

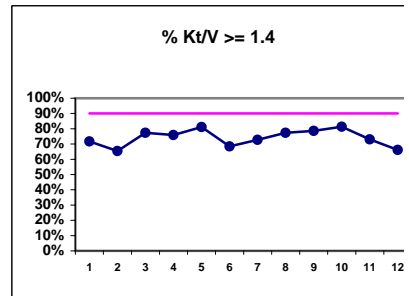


# URR	53	55	53	54	53	58	56	53	56	59	63	62
# URR >= 65.0	44	48	46	47	50	49	52	43	47	52	56	48
Pop. Mean =	71.5	70.9	72.5	72.1	73.2	71.1	72.6	71.0	71.8	72.9	74.3	71.2
Std. Deviation =	5.92	6.00	6.59	6.25	5.73	5.83	6.30	6.09	6.68	6.91	7.04	6.72
Network Mean =	74.0	74.0	74.0	74.0	74.0	74.0	74.0	74.0	74.0	74.0	74.0	74.0
*Natl. Mean =	68.0	68.0	68.0	68.0	68.0	68.0	68.0	68.0	68.0	68.0	68.0	68.0
% URR >= 65.0	83%	87%	87%	87%	94%	84%	93%	81%	84%	88%	89%	77%
*Natl. % > 65.0	72%	72%	72%	72%	72%	72%	72%	72%	72%	72%	72%	72%



* Figures for 1997

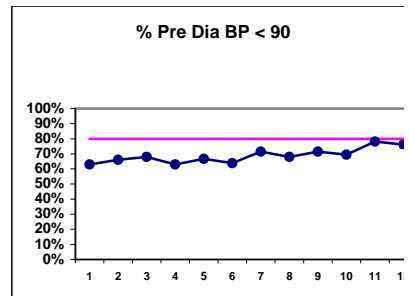
# Kt/V	53	55	53	54	53	57	55	53	56	59	63	62
# Kt/V >= 1.4	38	36	41	41	43	39	40	41	44	48	46	41
Pop. Mean =	1.55	1.52	1.58	1.54	1.60	1.49	1.55	1.58	1.70	1.54	1.53	1.46
Std. Deviation =	0.23	0.26	0.35	0.26	0.36	0.23	0.27	0.28	0.63	0.25	0.23	0.34
Network Mean =												
*Natl. Mean =	1.39	1.39	1.39	1.39	1.39	1.39	1.39	1.39	1.39	1.39	1.39	1.39
% Kt/V >= 1.4	72%	65%	77%	76%	81%	68%	73%	77%	79%	81%	73%	66%
% Kt/V > 1.2	83%	85%	90%	93%	96%	89%	87%	91%	91%	90%	92%	84%
*Network % > 1.2	79%	79%	79%	79%	79%	79%	79%	79%	79%	79%	79%	79%
*Natl. % > 1.2	78%	78%	78%	78%	78%	78%	78%	78%	78%	78%	78%	78%



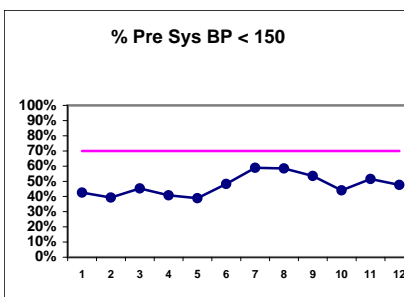
* Figures for 1997

Blood Pressure Control (Pre)

# Pre Dia BP	54	56	53	54	54	58	56	53	56	59	64	63
# Pre Dia BP < 90	34	37	36	34	36	37	40	36	40	41	50	48
Pop. Mean =	85	86	85	85	86	84	83	83	85	85	83	83
Std. Deviation =	11.9	12.8	11.9	12.7	13.4	13.6	12.7	13.3	16.8	16.9	12.5	13.8
Network Mean =												
Natl. Mean =												
% Pre Dia BP < 90	63%	66%	68%	63%	67%	64%	71%	68%	71%	69%	78%	76%



# Pre Sys BP	54	56	53	54	54	58	56	53	56	59	64	63
# Pre Sys BP < 150	23	22	24	22	21	28	33	31	30	26	33	30
Pop. Mean =	154	155	153	152	153	149	147	148	150	149	151	150
Std. Deviation =	18.4	18.1	17.4	16.5	16.4	15.8	17.9	17.2	20.7	20.2	27.8	20.0
Network Mean =												
Natl. Mean =												
% Pre Sys BP < 150	43%	39%	45%	41%	39%	48%	59%	58%	54%	44%	52%	48%



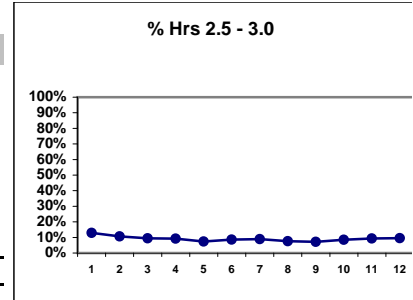
*Methodology: a) Monthly values based on patient's monthly average of all values present for the month; b) Quarter values are average of all values for quarter; c) Values not averaged use last value present at months end.

Auburn Kidney Center - Center Hemodialysis
Quality Assurance Reports (Excludes patients in first 6 months of treatment)
Through period ending Dec. 31, 1999

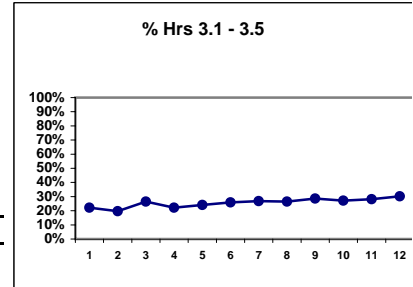
I,j - I.S. Dept.

I. ADEQUACY OF DIALYSIS - CONT.

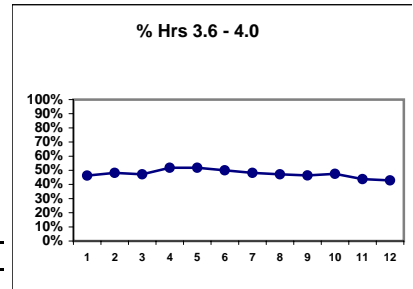
	J	F	M	A	M	J	J	A	S	O	N	D
# Dialysis Hrs	54	56	53	54	54	58	56	53	56	59	64	63
# Hrs. 2.5 - 3.0	7	6	5	5	4	5	5	4	4	5	6	6
Pop. Mean =	3.6	3.7	3.8	3.8	3.8	3.7	3.7	3.7	3.8	3.8	3.7	3.7
Std. Deviation =	0.50	0.45	0.46	0.44	0.46	0.44	0.44	0.44	0.41	0.44	0.45	0.43
Network Mean =												
Natl. Mean =												
% Hrs. 2.5 - 3.0	13%	11%	9%	9%	7%	9%	9%	8%	7%	8%	9%	10%



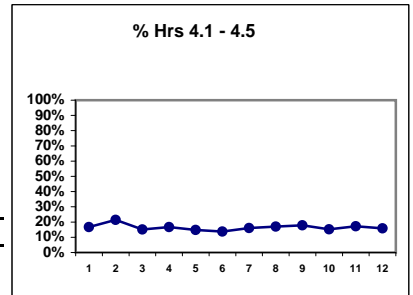
# Dialysis Hrs	54	56	53	54	54	58	56	53	56	59	64	63
# Hrs 3.1 - 3.5	12	11	14	12	13	15	15	14	16	16	18	19
Pop. Mean =	3.6	3.7	3.8	3.8	3.8	3.7	3.7	3.7	3.8	3.8	3.7	3.7
Std. Deviation =	0.50	0.45	0.46	0.44	0.46	0.44	0.44	0.44	0.41	0.44	0.45	0.43
Network Mean =												
Natl. Mean =												
% Hrs 3.1 - 3.5	22%	20%	26%	22%	24%	26%	27%	26%	29%	27%	28%	30%



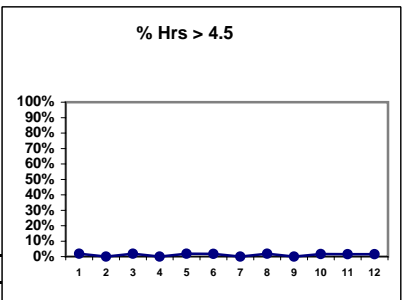
# Dialysis Hrs	54	56	53	54	54	58	56	53	56	59	64	63
# Hrs 3.6 - 4.0	25	27	25	28	28	29	27	25	26	28	28	27
Pop. Mean =	3.6	3.7	3.8	3.8	3.8	3.7	3.7	3.7	3.8	3.8	3.7	3.7
Std. Deviation =	0.50	0.45	0.46	0.44	0.46	0.44	0.44	0.44	0.41	0.44	0.45	0.43
Network Mean =												
Natl. Mean =												
% Hrs 3.6 - 4.0	46%	48%	47%	52%	52%	50%	48%	47%	46%	47%	44%	43%



# Dialysis Hrs	54	56	53	54	54	58	56	53	56	59	64	63
# Hrs 4.1 - 4.5	9	12	8	9	8	8	9	9	10	9	11	10
Pop. Mean =	3.6	3.7	3.8	3.8	3.8	3.7	3.7	3.7	3.8	3.8	3.7	3.7
Std. Deviation =	0.50	0.45	0.46	0.44	0.46	0.44	0.44	0.44	0.41	0.44	0.45	0.43
Network Mean =												
Natl. Mean =												
% Hrs 4.1 - 4.5	17%	21%	15%	17%	15%	14%	16%	17%	18%	15%	17%	16%



# Dialysis Hrs	54	56	53	54	54	58	56	53	56	59	64	63
# Hrs > 4.5	1	0	1	0	1	1	0	1	0	1	1	1
Pop. Mean =	3.6	3.7	3.8	3.8	3.8	3.7	3.7	3.7	3.8	3.8	3.7	3.7
Std. Deviation =	0.50	0.45	0.46	0.44	0.46	0.44	0.44	0.44	0.41	0.44	0.45	0.43
Network Mean =												
Natl. Mean =												
% Hrs > 4.5	2%	0%	2%	0%	2%	2%	0%	2%	0%	2%	2%	2%



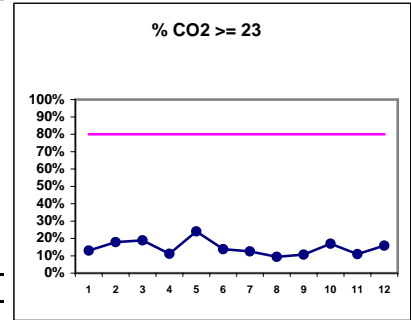
*Methodology: a) Monthly values based on patient's monthly average of all values present for the month; b) Quarter values are average of all values for quarter; c) Values not averaged use last value present at months end.

Auburn Kidney Center - Center Hemodialysis
Quality Assurance Reports (Excludes patients in first 6 months of treatment)
Through period ending Dec. 31, 1999

I,j - I.S. Dept.

I. ADEQUACY OF DIALYSIS - CONT.

	J	F	M	A	M	J	J	A	S	O	N	D
# CO2	54	56	53	54	54	58	56	53	56	59	64	63
# CO2 >= 23	7	10	10	6	13	8	7	5	6	10	7	10
Pop. Mean =	19	20	20	20	20	20	19	19	19	20	19	19
Std. Deviation =	2.38	2.35	2.42	2.69	3.45	2.77	3.19	2.53	2.86	3.70	3.17	2.73
Network Mean =												
Natl. Mean =												
% CO2 >= 23	13%	18%	19%	11%	24%	14%	13%	9%	11%	17%	11%	16%



(Note: Jan & Feb Albumin values are adjusted by +0.2)

*Albumin values use BCP method)

*Methodology: a) Monthly values based on patient's monthly average of all values present for the month; b) Quarter values are average of all values for quarter; c) Values not averaged use last value present at months end.

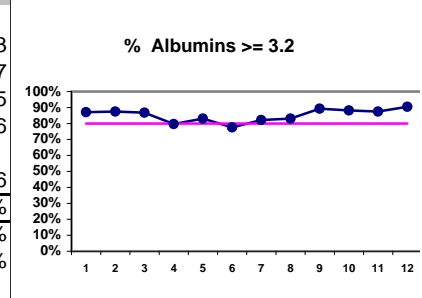
Auburn Kidney Center - Center Hemodialysis
Quality Assurance Reports (Excludes patients in first 6 months of treatment)
Through period ending Dec. 31, 1999

I,j - I.S. Dept.

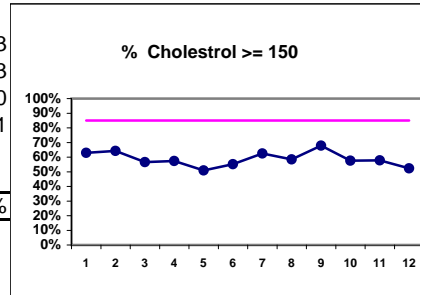
II. NUTRITION

	J	F	M	A	M	J	J	A	S	O	N	D
# Albumin	54	56	53	54	53	58	56	53	56	59	64	63
# Albumin >= 3.2	47	49	46	43	44	45	46	44	50	52	56	57
Pop. Mean =	3.5	3.5	3.5	3.4	3.5	3.5	3.5	3.5	3.6	3.5	3.6	3.5
Std. Deviation =	0.34	0.34	0.42	0.46	0.41	0.42	0.41	0.45	0.37	0.34	0.36	0.46
Network Mean =												
Natl. Mean =	3.6	3.6	3.6	3.6	3.6	3.6	3.6	3.6	3.6	3.6	3.6	3.6
% Albumin >= 3.2	87%	88%	87%	80%	83%	78%	82%	83%	89%	88%	88%	90%
*Network % >= 3.2	76%	76%	76%	76%	76%	76%	76%	76%	76%	76%	76%	76%
*Natl. % >= 3.2	83%	83%	83%	83%	83%	83%	83%	83%	83%	83%	83%	83%

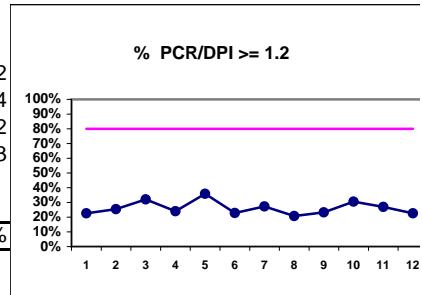
*Figures for 1997



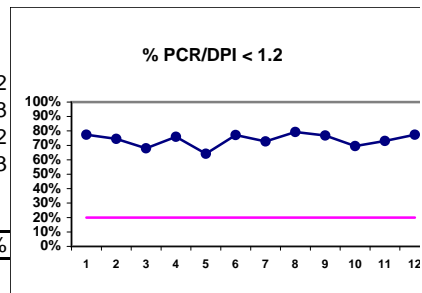
# Cholesterol	54	56	53	54	53	58	56	53	56	59	64	63
# Chol. >= 150	34	36	30	31	27	32	35	31	38	34	37	33
Pop. Mean =	163	168	158	157	150	156	163	157	165	163	160	160
Std. Deviation =	36.8	44.1	36.1	32.3	37.8	31.1	33.7	35.8	33.1	42.6	35.6	42.1
Network Mean =												
Natl. Mean =												
% Chol. >= 150	63%	64%	57%	57%	51%	55%	63%	58%	68%	58%	58%	52%



# PCR/DPI	53	55	53	54	53	57	55	53	56	59	63	62
# PCR/DPI >= 1.2	12	14	17	13	19	13	15	11	13	18	17	14
Pop. Mean =	1.01	1.00	1.06	1.02	1.06	0.97	1.02	1.02	1.05	1.06	1.01	1.02
Std. Deviation =	0.25	0.19	0.26	0.26	0.24	0.24	0.20	0.22	0.21	0.25	0.27	0.23
Network Mean =												
Natl. Mean =												
% PCR/DPI >= 1.2	23%	25%	32%	24%	36%	23%	27%	21%	23%	31%	27%	23%



# PCR/DPI	53	55	53	54	53	57	55	53	56	59	63	62
# PCR/DPI < 1.2	41	41	36	41	34	44	40	42	43	41	46	48
Pop. Mean =	1.01	1.00	1.06	1.02	1.06	0.97	1.02	1.02	1.05	1.06	1.01	1.02
Std. Deviation =	0.25	0.19	0.26	0.26	0.24	0.24	0.20	0.22	0.21	0.25	0.27	0.23
Network Mean =												
Natl. Mean =												
% PCR/DPI < 1.2	77%	75%	68%	76%	64%	77%	73%	79%	77%	69%	73%	77%



III. OSTEODYSTROPHY

% Calcium < 11.0

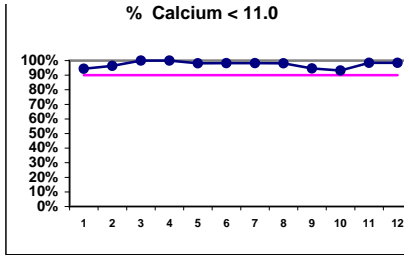
*Methodology: a) Monthly values based on patient's monthly average of all values present for the month; b) Quarter values are average of all values for quarter; c) Values not averaged use last value present at months end.

Auburn Kidney Center - Center Hemodialysis
Quality Assurance Reports (Excludes patients in first 6 months of treatment)

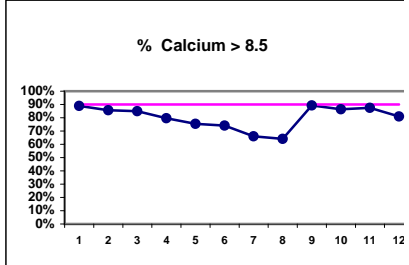
I.j - I.S. Dept.

Through period ending Dec. 31, 1999

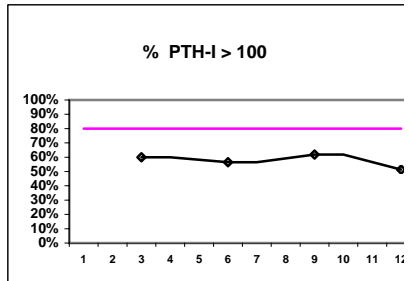
	J	F	M	A	M	J	J	A	S	O	N	D
# Calcium	54	56	53	54	53	58	56	53	56	59	64	63
# Calcium < 11.0	51	54	53	54	52	57	55	52	53	55	63	62
Pop. Mean =	9.6	9.4	9.4	9.2	9.2	9.1	9.1	8.9	9.5	9.5	9.4	9.3
Std. Deviation =	0.90	0.88	0.82	0.81	1.00	0.91	0.75	0.73	0.93	0.88	0.81	0.92
Network Mean =												
Natl. Mean =												
% Calcium < 11.0	94%	96%	100%	100%	98%	98%	98%	98%	95%	93%	98%	98%



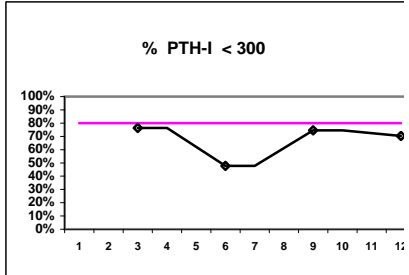
# Calcium	54	56	53	54	53	58	56	53	56	59	64	63
# Calcium > 8.5	48	48	45	43	40	43	37	34	50	51	56	51
Pop. Mean =	9.6	9.4	9.4	9.2	9.2	9.1	9.1	8.9	9.5	9.5	9.4	9.3
Std. Deviation =	0.90	0.88	0.82	0.81	1.00	0.91	0.75	0.73	0.93	0.88	0.81	0.92
Network Mean =												
Natl. Mean =												
% Calcium > 8.5	89%	86%	85%	80%	75%	74%	66%	64%	89%	86%	88%	81%



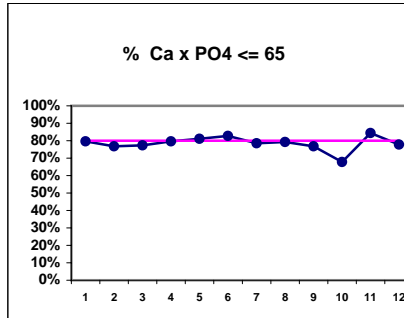
# PTH-I			55			23			55			37
# PTH-I > 100			33			13			34			19
Pop. Mean =			272			181			240			190
Std. Deviation =			362			414			287			405
Network Mean =												
Natl. Mean =												
% PTH-I > 100			60%			57%			62%			51%



# PTH-I			55			23			55			37
# PTH-I < 300			42			11			41			26
Pop. Mean =			272			181			240			190
Std. Deviation =			362			414			287			405
Network Mean =												
Natl. Mean =												
% PTH-I < 300			76%			48%			75%			70%

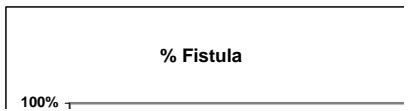


# Ca x PO4	54	56	53	54	53	58	56	53	56	59	64	63
# Ca x PO4 <= 65	43	43	41	43	43	48	44	42	43	40	54	49
Pop. Mean =	55.3	54.0	56.4	55.1	50.7	50.7	49.2	49.1	53.8	54.7	50.6	51.4
Std. Deviation =	18.4	17.7	16.5	18.7	16.6	17.6	18.5	17.4	19.4	19.1	14.7	16.6
Network Mean =												
Natl. Mean =												
% Ca x PO4 <= 65	80%	77%	77%	80%	81%	83%	79%	79%	77%	68%	84%	78%



IV. ACCESS

J F M A M J J A S O N D



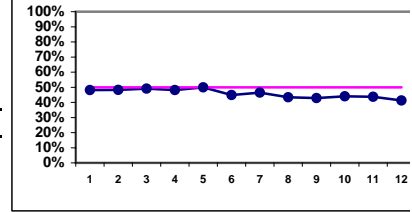
*Methodology: a) Monthly values based on patient's monthly average of all values present for the month; b) Quarter values are average of all values for quarter; c) Values not averaged use last value present at months end.

Auburn Kidney Center - Center Hemodialysis
Quality Assurance Reports (Excludes patients in first 6 months of treatment)

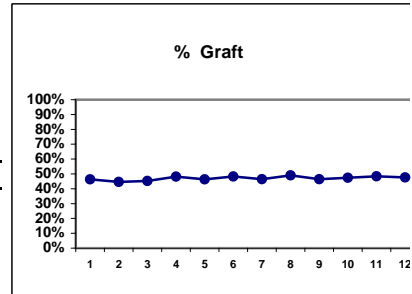
I,j - I.S. Dept.

Through period ending Dec. 31, 1999

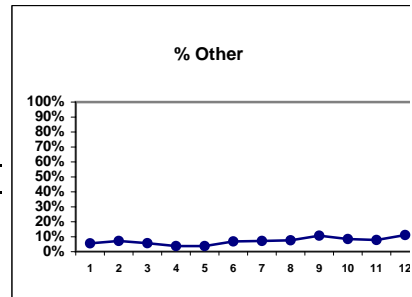
# Access	54	56	53	54	54	58	56	53	56	59	64	63
# Fistula	26	27	26	26	27	26	26	23	24	26	28	26
Network %												
Natl. %												
% Fistula	48%	48%	49%	48%	50%	45%	46%	43%	43%	44%	44%	41%



# Access	54	56	53	54	54	58	56	53	56	59	64	63
# Graft	25	25	24	26	25	28	26	26	26	28	31	30
Network %												
Natl. %												
% Graft	46%	45%	45%	48%	46%	48%	46%	49%	46%	47%	48%	48%

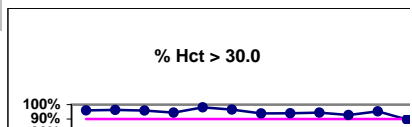


# Access	54	56	53	54	54	58	56	53	56	59	64	63
# Other	3	4	3	2	2	4	4	4	6	5	5	7
Network %												
Natl. %												
% Other	6%	7%	6%	4%	4%	7%	7%	8%	11%	8%	8%	11%



V. ANEMIA

	J	F	M	A	M	J	J	A	S	O	N	D
# Hct	50	54	48	54	52	58	49	50	54	55	64	58
# Hct > 30.0	48	52	46	51	51	56	46	47	51	51	61	52



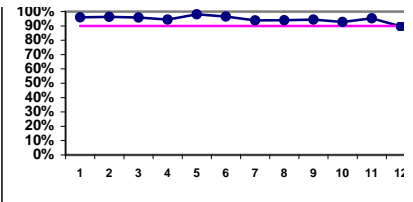
*Methodology: a) Monthly values based on patient's monthly average of all values present for the month; b) Quarter values are average of all values for quarter; c) Values not averaged use last value present at months end.

Auburn Kidney Center - Center Hemodialysis
Quality Assurance Reports (Excludes patients in first 6 months of treatment)

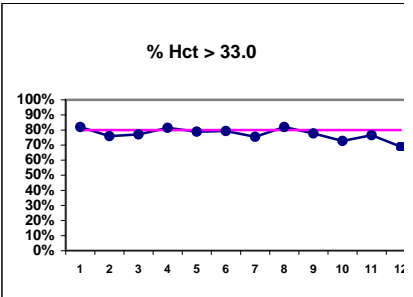
I.j - I.S. Dept.

Through period ending Dec. 31, 1999

Pop. Mean =	35.9	35.7	35.4	35.5	35.6	36.3	36.4	35.8	35.8	34.9	35.9	35.2
Std. Deviation =	3.93	4.20	4.16	4.09	3.69	3.70	3.74	3.54	3.62	3.65	3.98	3.64
Network Mean =												
*Natl. Mean =	33.2	33.2	33.2	33.2	33.2	33.2	33.2	33.2	33.2	33.2	33.2	33.2
% Hct > 30.0	96%	96%	96%	94%	98%	97%	94%	94%	94%	93%	95%	90%
*% Network > 30.0	85%	85%	85%	85%	85%	85%	85%	85%	85%	85%	85%	85%
*% Natl. > 30.0	79%	79%	79%	79%	79%	79%	79%	79%	79%	79%	79%	79%

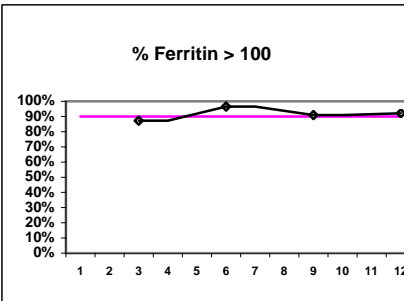


# Hct	50	54	48	54	52	58	49	50	54	55	64	58
# Hct > 33.0	41	41	37	44	41	46	37	41	42	40	49	40
Pop. Mean =	35.9	35.7	35.4	35.5	35.6	36.3	36.4	35.8	35.8	34.9	35.9	35.2
Std. Deviation =	3.93	4.20	4.16	4.09	3.69	3.70	3.74	3.54	3.62	3.65	3.98	3.64
Network Mean =												
*Natl. Mean =	33.2	33.2	33.2	33.2	33.2	33.2	33.2	33.2	33.2	33.2	33.2	33.2
% Hct > 33.0	82%	76%	77%	81%	79%	79%	76%	82%	78%	73%	77%	69%
*% Network > 33.0	64%	64%	64%	64%	64%	64%	64%	64%	64%	64%	64%	64%
*% Natl. > 33.0	56%	56%	56%	56%	56%	56%	56%	56%	56%	56%	56%	56%

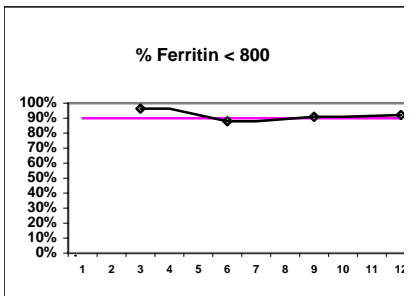


Iron Profile

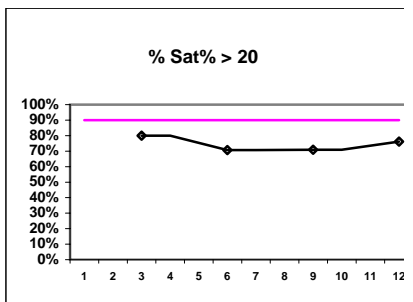
# Ferritin		55		58		55		63
# Ferritin > 100		48		56		50		58
Pop. Mean =		361		424		393		388
Std. Deviation =		223		308		354		285
Network Mean =								
Natl. Mean =								
% Ferritin > 100		87%		97%		91%		92%



# Ferritin		55		58		55		63
# Ferritin < 800		53		51		50		58
Pop. Mean =		361		424		393		388
Std. Deviation =		223		308		354		285
Network Mean =								
Natl. Mean =								
% Ferritin < 800		96%		88%		91%		92%

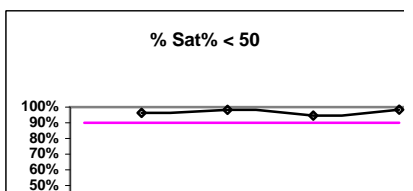


# % Sat		55		58		55		63
# % Sat > 20		44		41		39		48
Pop. Mean =		30.2		27.8		29.1		27.8
Std. Deviation =		14.1		10.5		13.9		9.9
Network Mean =								
Natl. Mean =								
% Sat% > 20		80%		71%		71%		76%



V. ANEMIA - CONT.

	J	F	M	A	M	J	J	A	S	O	N	D
# % Sat			55			58			55			63
# % Sat < 50			53			57			52			62
Pop. Mean =			30.2			27.8			29.1			27.8



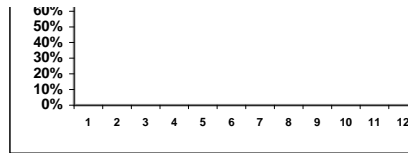
*Methodology: a) Monthly values based on patient's monthly average of all values present for the month; b) Quarter values are average of all values for quarter; c) Values not averaged use last value present at months end.

Auburn Kidney Center - Center Hemodialysis
Quality Assurance Reports (Excludes patients in first 6 months of treatment)

I,j - I.S. Dept.

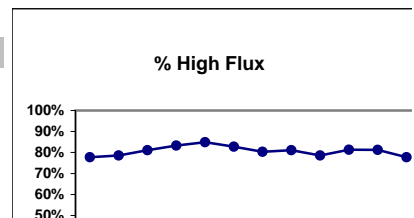
Through period ending Dec. 31, 1999

Std. Deviation =	14.1	10.5	13.9	9.9
Network Mean =				
Natl. Mean =				
% Sat% < 50	96%	98%	95%	98%



VI. OTHERS

	J	F	M	A	M	J	J	A	S	O	N	D
Dialyzer ratios												
# Dialyzers	54	56	53	54	53	58	56	53	56	59	64	63
# High Flux	42	44	43	45	45	48	45	43	44	48	52	49



*Methodology: a) Monthly values based on patient's monthly average of all values present for the month; b) Quarter values are average of all values for quarter; c) Values not averaged use last value present at months end.

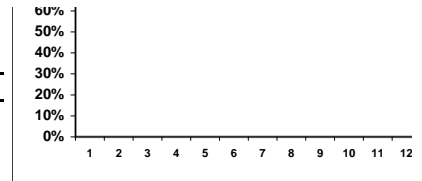
Auburn Kidney Center - Center Hemodialysis
Quality Assurance Reports (Excludes patients in first 6 months of treatment)
Through period ending Dec. 31, 1999

I.j - I.S. Dept.

Network %

Natl. %

% High Flux	78%	79%	81%	83%	85%	83%	80%	81%	79%	81%	81%	78%
--------------------	-----	-----	-----	-----	-----	-----	-----	-----	-----	-----	-----	-----

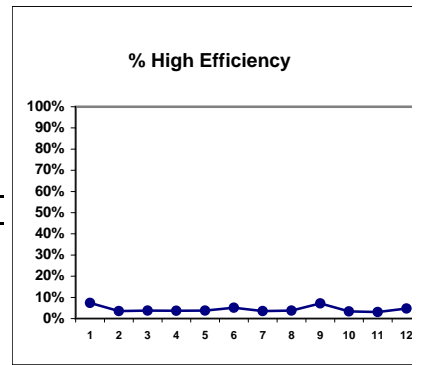


# Dialyzers	54	56	53	54	53	58	56	53	56	59	64	63
# High Efficiency	4	2	2	2	2	3	2	2	4	2	2	3

Network %

Natl. %

% High Efficiency	7%	4%	4%	4%	4%	5%	4%	4%	7%	3%	3%	5%
--------------------------	----	----	----	----	----	----	----	----	----	----	----	----

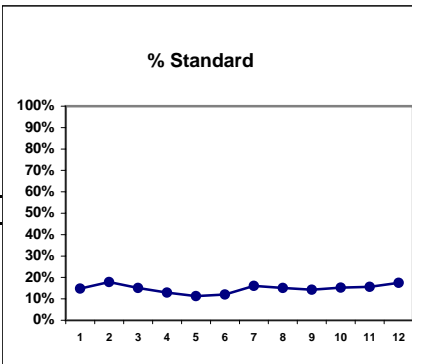


# Dialyzers	54	56	53	54	53	58	56	53	56	59	64	63
# Standard	8	10	8	7	6	7	9	8	8	9	10	11

Network %

Natl. %

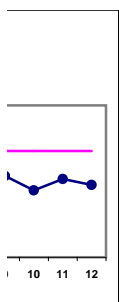
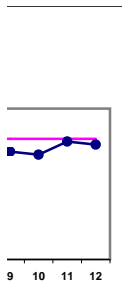
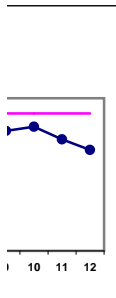
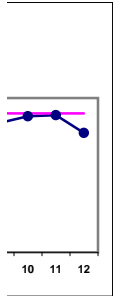
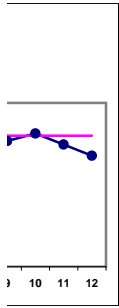
% Standard	15%	18%	15%	13%	11%	12%	16%	15%	14%	15%	16%	17%
-------------------	-----	-----	-----	-----	-----	-----	-----	-----	-----	-----	-----	-----



*Methodology: a) Monthly values based on patient's monthly average of all values present for the month; b) Quarter values are average of all values for quarter; c) Values not averaged use last value present at months end.

Auburn Kidney Center - Center Hemodialysis
Quality Assurance Reports (Excludes patients in first 6 months of treatment)
Through period ending Dec. 31, 1999

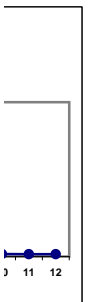
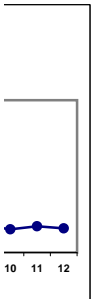
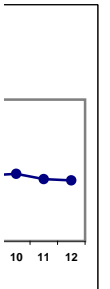
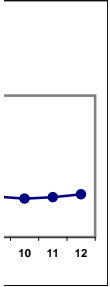
I,j - I.S. Dept.



*Methodology: a) Monthly values based on patient's monthly average of all values present for the month; b) Quarter values are average of all values for quarter; c) Values not averaged use last value present at months end.

Auburn Kidney Center - Center Hemodialysis
Quality Assurance Reports (Excludes patients in first 6 months of treatment)
Through period ending Dec. 31, 1999

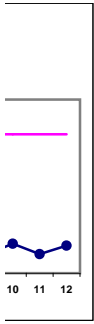
I,j - I.S. Dept.



*Methodology: a) Monthly values based on patient's monthly average of all values present for the month; b) Quarter values are average of all values for quarter; c) Values not averaged use last value present at months end.

Auburn Kidney Center - Center Hemodialysis
Quality Assurance Reports (Excludes patients in first 6 months of treatment)
Through period ending Dec. 31, 1999

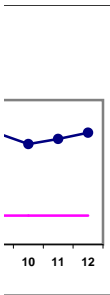
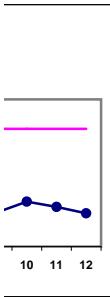
I,j - I.S. Dept.



*Methodology: a) Monthly values based on patient's monthly average of all values present for the month; b) Quarter values are average of all values for quarter; c) Values not averaged use last value present at months end.

Auburn Kidney Center - Center Hemodialysis
Quality Assurance Reports (Excludes patients in first 6 months of treatment)
Through period ending Dec. 31, 1999

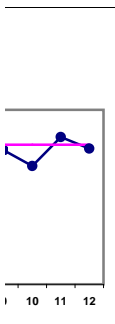
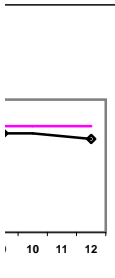
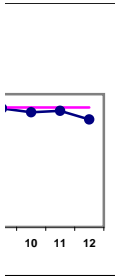
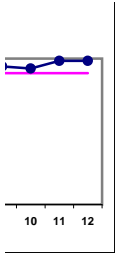
I,j - I.S. Dept.



*Methodology: a) Monthly values based on patient's monthly average of all values present for the month; b) Quarter values are average of all values for quarter; c) Values not averaged use last value present at months end.

Auburn Kidney Center - Center Hemodialysis
Quality Assurance Reports (Excludes patients in first 6 months of treatment)
Through period ending Dec. 31, 1999

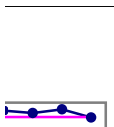
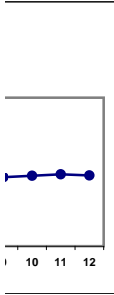
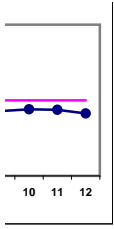
I,j - I.S. Dept.



*Methodology: a) Monthly values based on patient's monthly average of all values present for the month; b) Quarter values are average of all values for quarter; c) Values not averaged use last value present at months end.

Auburn Kidney Center - Center Hemodialysis
Quality Assurance Reports (Excludes patients in first 6 months of treatment)
Through period ending Dec. 31, 1999

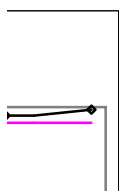
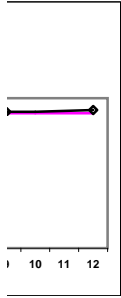
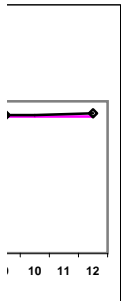
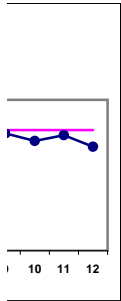
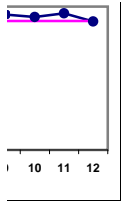
I,j - I.S. Dept.



*Methodology: a) Monthly values based on patient's monthly average of all values present for the month; b) Quarter values are average of all values for quarter; c) Values not averaged use last value present at months end.

Auburn Kidney Center - Center Hemodialysis
Quality Assurance Reports (Excludes patients in first 6 months of treatment)
Through period ending Dec. 31, 1999

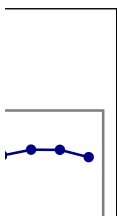
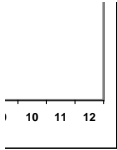
I,j - I.S. Dept.



*Methodology: a) Monthly values based on patient's monthly average of all values present for the month; b) Quarter values are average of all values for quarter; c) Values not averaged use last value present at months end.

Auburn Kidney Center - Center Hemodialysis
Quality Assurance Reports (Excludes patients in first 6 months of treatment)
Through period ending Dec. 31, 1999

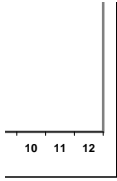
I,j - I.S. Dept.



***Methodology: a) Monthly values based on patient's monthly average of all values present for the month; b) Quarter values are average of all values for quarter; c) Values not averaged use last value present at months end.**

Auburn Kidney Center - Center Hemodialysis
Quality Assurance Reports (Excludes patients in first 6 months of treatment)
Through period ending Dec. 31, 1999

I,j - I.S. Dept.



*Methodology: a) Monthly values based on patient's monthly average of all values present for the month; b) Quarter values are average of all values for quarter; c) Values not averaged use last value present at months end.